

Coordination facility: Richmond EOC facility	Situation Report	
Event name: Pigeon Valley fire	SITREP number: 06	
Activation status: EOC IMT activated as lead agency	Effective as at: 1400 08-02-19	
Declared area: Tasman District	Declaration status: Declared	
	Time declared: 0800 06-02-19	Declaration expires: n/a

Summary of Incident/event: (Summary of what has happened and any critical issues/decisions made)

Note that additional and modified data will be shown in RED.

Following a declaration of a state of emergency at 0800 on 06 February, Nelson Tasman Civil Defence are the lead agency with support from Fire and Emergency Services NZ, NZ Police, and other support agencies. Around 14:15 on 05 February 2019 a fire started in Pigeon Valley.

The burnt area has increased in size to 2100Ha with a perimeter of 27km.

Preparation is being made for wind gusts of 55km/h from the NNE on Sunday with potential for 0.5km spotting ahead of the fire front. In light of that most of Wakefield is being evacuated now along with the rest of Pigeon Valley.

Saxton Stadium at Saxton Field, Main Road in Stoke, has been set up as a CDC and the Wakefield CDC has been closed.

Lifelines Utilities (Network Tasman, Chorus, Vodafone and 3 Waters) continue to report networks are intact and no significant problems currently.

The lead agency has set the objectives for this period as:

- 1) protection of life, property, and critical infrastructure
- 2) extinguish the fire
- 3) mobilisation of national resources by all agencies
- 4) communication with and support for our community

There are no injuries or human loss of life to date.

One dwelling has been destroyed.

Stock movements and welfare continue to be managed by MPI.

Fire has broken out north of Nelson, at Walters Bluff. Evacuations have occurred. The situation is dynamic and details are TBC.

Weather forecast (NIWA @1105)

11 am – 6 pm Friday

Rainfall: Nil.

Sustained wind: NE 10-15 km/h through to 6 pm.

Wind gusts: Gusts gradually increasing to around 35 km/h from near midday through to 6 pm.

Temperature: 17°C increasing to a maximum 20-21°C by early-to-mid-afternoon.

Humidity: Decreasing from near 60% early to 40-45% by early afternoon. Humidity then increases to 70-75% by 6 pm.

6 pm Friday – 6 am Saturday

Rainfall: Slight chance for a shower near 6 am. Amounts, if any, 2 mm or less.

Sustained wind: E gradually turning SW by 9pm, 10 km/h or less.

Wind gusts: Gusts up to 25 km/h through to 9 pm, then 15 km/h or less thereafter.

Temperature: Decreasing to near 13°C early morning.

Humidity: Increasing to near 95% after midnight.

Outlook for Saturday:

Chance of scattered rain showers around mid-day. Rainfall, if any, less than 2 mm.

Afternoon wind gusts up to 40 km/h possible.

Maximum temperature 22°C.

Outlook for Sunday:

Rainfall, if any, 1 mm or less.

Afternoon wind gusts up to 50 km/h possible.

Maximum temperature 23-24°C.

Actions carried Out: (Summary of what support agencies are doing, what has been done since previous SITREP or Action Plan, any coordination issues and priority actions.)

- A Declaration of Local Emergency was declared at 0800 on 06-02-19
- A forward control point is being moved to **Brightwater Recreation Area (09-02-19 @ 0600)**.
- **National Emergency Mobile Alert system used for notifying Wakefield of evacuation.**
- **Saxton Stadium at Saxton Field opened as a CDC.**
- **MoE notified of evacuation as children will be at school and will require to be rerouted to meet parents or go to the CDC rather than go home if they live in the evacuation zones.**
- **180 properties (398 people) have previously been evacuated or have self-evacuated. Additional properties being evacuated in Wakefield are 340 at this stage. Further evacuations are likely.**
- **Wakefield Rest Home (22 people) were evacuated.**
- **Police continue to oversee cordons and are assisted by roading contractors and NZDF.**
- **Firebreaks and control lines are being utilised to contain the fire ahead of a predicted weather change in the afternoon and over the weekend.**
- **MPI are working with the Welfare team and cordon control, especially around additional evacuations in Wakefield. MPI are utilising the A&P showgrounds as a holding site for stock evacuated.**
- **EOC shifts and staffing have been established as follows:**
 - **8th February Day shift 0600 to 1800**
 - **8th February Night Shift 1800 to 0600**
 - **9th February Day shift 0600 to 1800**
 - **9th February Night shift 1800 to 0600**
 - **Additional Shift numbers for the evenings of the nites of the 9th and 10th are being arranged.**
- **Red Cross are being utilised for Psychological First Aid in conjunction with evacuations.**
- **NCMC is monitoring the situation with liason officers from other agencies.**
- **Outreach needs assessment (for those previously evacuated) is on hold as Wakefield is evacuated.**
- **Evacuation zone and fire extent mapping continues to be updated as evacuations expand and fire extent changes.**
- **Additional NZDF (50) and Police (2 teams)and Canterbury RT (22) personnel are arriving today to assist. Additional staff are being coordinated by Police, including 35 recruits.**
- **MSD has activated their Civil Defence payments via 0800 559 009**
- **DHB and PHO have set up a multi-agency psychosocial support service including free GP visits for those affected and possible counselling sessions**
- **No-fly zone NZR670 established by CAA up to 3000feet AMSL until 1700 Mon 11 Feb.**
- **Greenacres and Malling Roads now open.**

- Next Community meeting is Saturday 09-02-19 at 0900 at Appleby School.
- Nelson airport's offer of up to 10,000L of A1 jet fuel has alleviated the earlier fuel concerns.
- Temporary cell sites being installed by Vodafone and Chorus.
- St John Church CDC is closed as the CDC as Wakefield is evacuated and the new CDC will be now be at Saxton Stadium
- Welfare outreach operations continue, with a focus from partner agencies on ring-out needs assessment for those already evacuated. Additional support being put in place for new evacuees from Wakefield/Pigeon Valley.

Predicted Incident/Event Progression: (How the situation is anticipated to evolve – cause factors, consequences and response.)

Fire-fighting is focused on protection of life and property and containment of the fire on the margins, however the fire is still burning in the forest.

Emerging issues are:

1. Wakefield is being evacuated ahead of a wind shift predicted later today (08-02-19) and further stronger wind gusts into Sunday.-Check www.nelsontasmancivildefence.co.nz/ for more info.”
2. Availability of commercial security services is significantly reduced now. May need to consider NZ Police or NZDF support if further CDCs are opened.
3. Reliability of classifications of safe-to-return properties uncertain, needs re-assessment.
4. On-going displacement of evacuees – people are unlikely to be able to return home until Friday at the earliest and possibly longer; signs of stress emerging, and providing information and timeframes to displaced people will become increasingly important.
5. Animal welfare and access to stock is a growing concern and may become a larger issue once residents can get back to their properties.
6. Stock may need to be moved from some M bovis properties if the fire changes direction, including one property with 1700 animals, so contingency planning is being done by MPI.
7. Increasing evacuee anxiety and distress over re-entry to homes and animal welfare, with additional anxiety around further evacuations today ahead of the wind shift.

Resources in Place: (Key resources being used.)

EOC IMT, welfare team

EOC facility in Richmond

FENZ national IMT team. Forward Command moving to Brightwater Recreation Area (09-02-19 @ 0600)

22 helicopters (with additional resources in reserve if needed)

2 fixed wing aircraft (on standby)

10 bull dozers

8 diggers

21 fire crews

NZDF on site

Additional Police on site.

Saxton Stadium set up as CDC

CDEM Groups personnel from other areas.

Resources Required: (These need to be requested on separate “resource request” form but can be summarised here.)

Staff for tightening up of HARD Cordons, with NZDF and Police forces being augmented again today.

Stock welfare – MPI and Fed Farmers are assisting

Moving the CDC from Wakefield to Saxton Stadium.

Additional EOC space and support resources (desks/computers) for agency staff arriving today and for increased Welfare team presence.

Limiting Factors: (Anything that is, or is likely to affect the effectiveness of the response.)

Fire weather behaviour is likely to become unstable as wind shifts and increases and will require more assessment as evacuations ahead of the wind shift continues.

Assessment: (Any critical issues or assumptions made.)

As needs increase, so will requirement for outreach and needs assessment – looking at additional welfare agency support.

With news just in regarding an additional fire in Nelson additional coordination be EOC needed as it is within the declaration area.

Intended Actions: (Outline significant actions intended in current and subsequent operations.)

- Welfare priorities - animal welfare/treatment, Psychosocial support, ongoing accommodation with 20 through Saxton Stadium so far.
- Psychosocial assessments by Red Cross/Salvation/public health support with PFA
- Development of Recovery Plan
- Planning for building inspections once zones are safe to enter.
- Next Community meeting Saturday 09-02-2019 @0900 at Appleby School.
- Continue to evacuate Wakefield (Police and NZDF)
- Fixed wing air ambulance requested to be relocated here.
- St John deployed staff to Brightwater and small hospital facility as evacuation continues
- FENZ will deploy drones with heat imaging cameras overnight.

Social/Community

Summary: (Summary of social/community information)

Most of Wakefield now evacuating, Pigeon Valley continuing to evacuate and Saxton Stadium set up as new CDC. Fire danger increasing as wind change comes through.

People missing, injured, fatalities

Area	Missing #	Injured #	Fatalities #	Additional information
n/a	none	none	none	

Evacuations

Area	Numbers evacuated	Numbers in or requiring temporary shelter		Numbers in or requiring long term shelter		Additional information
		In	Req.	In	Req.	
Eve's Valley, Golden Hills Road, Redwood Valley Road, Malling Road, Greenacres Road, Deepdale	520 households	In progress (TBC)	0	0	0	

Area	Numbers evacuated	Numbers in or requiring temporary shelter		Numbers in or requiring long term shelter		Additional information
		In	Req.	In	Req.	
Road, Sunrise Valley Road Wakefield and Pidgeon valley						
Wakefield rest home	22	22	0	0	0	
Vulnerable People relocated	6	6				

Hospitals and medical centres: (Status of these facilities, what impacts or consequences are occurring, are they managing?)
None to report

Specialist care facilities: (Status of these facilities, what impacts or consequences are occurring, are they managing?)
None to report

Educational institutions: (Status of the education sector, have schools closed?)
Notified of Wakefield and Pidgeon Valley evacuations for them to manage their pupils.

Local businesses: (Note any changes in demand, access to inputs, distribution systems, stock holdings and supply chains)
Not assessed by CDEM at this stage

Social/community needs: (Are there any critical needs that should be outlined? Who is dealing with it/is it being dealt with?)
Welfare needs are being recorded and assessed by staff at the welfare centre and customers services staff at TDC.

Transportation status

Service	Description	Status	Definition
Road	<p>Pigeon Valley @ SH6 intersection. Residents Only (prepped for 2 hour GO/NO GO)</p> <p>Moutere Highway from Redwood Rd to Waimea West Rd intersection. Closed Daytime for Helo Fly Zone</p> <p>Golden Hill Rd @ Moutere Highway intersection. Closed Daytime for Helo Fly Zone</p> <p>Eves Valley Rd</p> <p>Teapot Valley Rd. Residents only (prepped for 2 hour GO/NO GO)</p> <p>Golden Hills Rd @ Challies Rd intersection. South end evacuated, controlled residents access at 1000 (08-02-19)</p> <p>intersection at redwood valley rd and redwood valley lane. Smoke issues.</p> <p>Valley Lane - Redwood</p> <p>Barton Lane</p> <p>Symmonds Rd</p> <p>Arnold Rd</p> <p>70km zone Rutherford St to Wakefield. Smoke an issue</p> <p>Dovedail Road - Pidgeon Valley</p> <p>Green Acres Rd</p> <p>Mailing Rd</p> <p>Bird Lane</p>	Green	Open/working/normal

	Franklin Close Martin Avenue
Airport	Airport – currently BAU
Port	
Rail	

Orange	Partial impact/limited service
Red	Closed/not working

Type the word and/or colour cell to match status

Area	Roads	Airports	Ports	Rail	Additional information

Lifeline utility status

(detail the extent of damage, the area affected, response taken and length of time to reinstatement)

Area	Electricity	Petroleum	Telecoms	Water	Sewerage	FMCG	Additional information
Redwood valley				Water supply not operating			Supplies 35 properties

Lifeline utility needs: (Are there any critical needs that should be outlined? Who is dealing with it/is it being dealt with?)

Phone, power, cell phone towers all ok at present exempt the Wakefield Vodafonbe site.

Wakefield drinking water reservoir at 50% capacity but recovering.

Property status

Commercial Property: (Numbers and locations of seriously damaged and condemned)

Housing and property needs: (Numbers and locations of seriously damaged and condemned)

Not assessed by CDEM at this stage. Some minor damage to dwellings and surrounds expected, one report of building loss, no further reports of other major damage to date. **Unconfirmed report of one or two dwellings in Walters Bluff being lost to fire (breaking news).**

Environmental status

Natural resources: (Damage resources such as plough able land, quarries, mines or water supplies)

Not assessed by CDEM at this stage

Biodiversity and ecosystems: (Habitat or foodstuff loss, destruction of plants and animals, changes in pest population dynamics)

Not assessed by CDEM at this stage

Waste and pollution: (Debris, garbage and spills, issues with large scale removal and processing of ?)

Possible issues related to disposal of dead stock animals

Environmental needs: (Are there any critical needs that should be outlined? Who is dealing with it/is it being dealt with?)

Impact on water supply has been discussed, no issue identified

Rural status

Farming community and agriculture: (Extent of impact on the farming community and response taken)

MPI and rural welfare agencies engaged and active

Rural needs: (Are there any critical needs that should be outlined? Who is dealing with it/is it being dealt with?)

Stock welfare – water is on-going issue within cordon areas - currently with logistics for water tanker resourcing.
M bovis contingency planning – 1 property within cordon identified and stock secured with M Bovis Response team advised.

Working with cordon management for access.

FedFarm ready to activate feed-on-line via web.

Additional information

Hazards: (Include information on the hazards such as latest MetService warnings/ information or GeoNet Volcanic Bulletin)

Potential weather influences on ember transfer and sudden gusts threat that might escalate fire behaviour.

Priority actions: (List key priorities for the Operations Centre over the next 24 hours or period as set by the Controller)

- 1) protection of life, property, and critical infrastructure
- 2) mobilisation of resources
- 3) communication with and support for our community

Support agencies: (List of agencies involved in the response)

Nelson Tasman CDEM Group, including Fire and Emergency New Zealand, New Zealand Police, St John's, Red Cross, RT2, NZTA, NZDF, MPI, NMDHB, MSD, TDC, Police/TPK Liaison.

Report authorised by:

Denis Bush-King, Controller
 Signed off by Roger Ball.

Report prepared by:

Lamorna Cooper (P & I team)

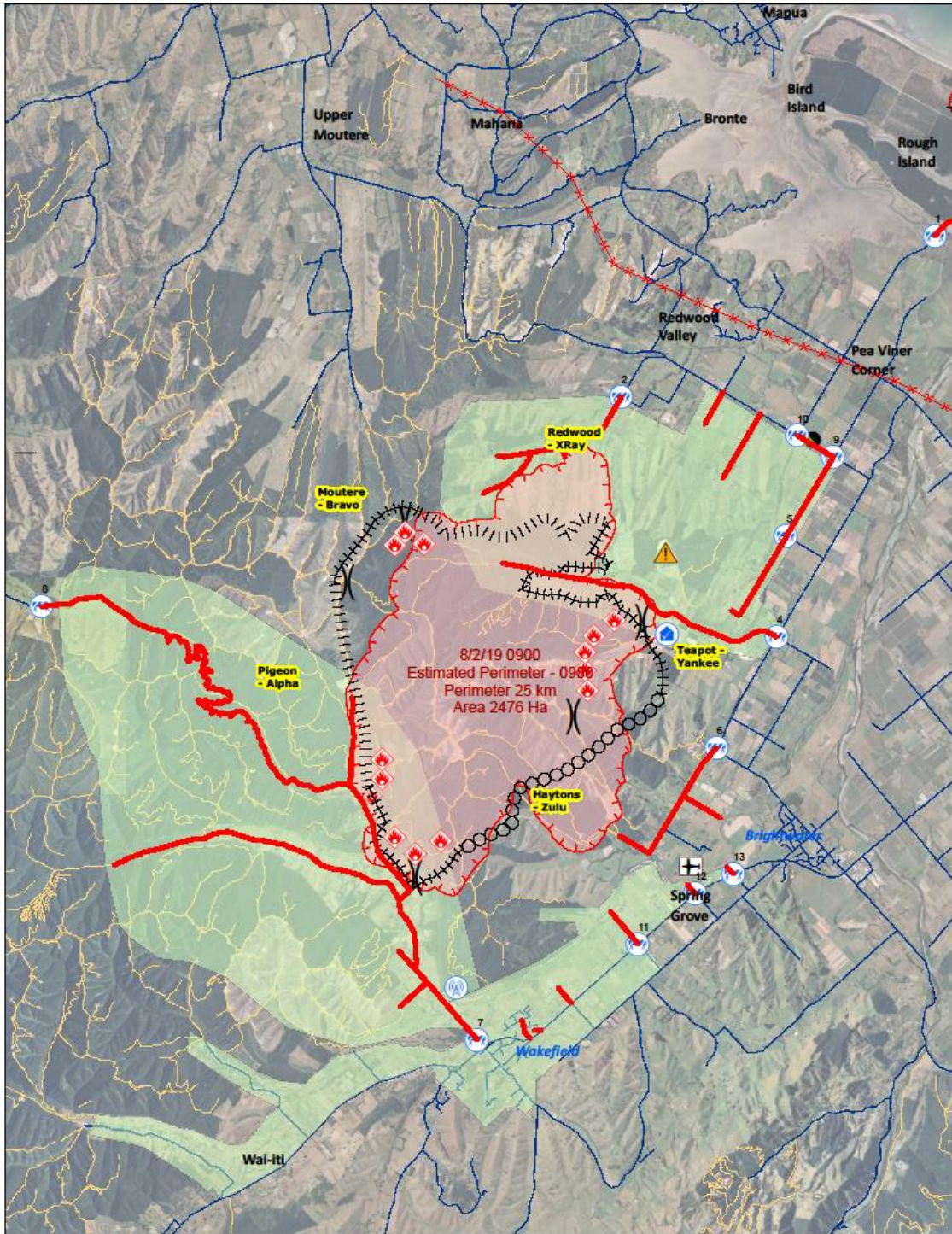
Date/time of approval:

08-02-2019 @ 1500

Next situation report will be issued at:

09-02-2019 @ 1400 (TBC)

Appendix A - Cordon and Fire Control Points as at 1500



**FOR OFFICIAL USE ONLY.
NOT FOR PUBLIC DISTRIBUTION.**

Date saved: 8/02/2019, 1430 hrs
Prepared by: petei

Coordinate System: NZGD 2000 New Zealand Transverse Mercator
Projection: Transverse Mercator
Datum: NZGD 2000
Units: Meter
Sourced from Land Information New Zealand data.
Crown copyright reserved.

Scale at A3 1:60,000



- Legend**
- Closed Roads
 - Completed Dozer Break
 - Planned Dozer Break
 - Planned Retardant Break
 - Power Line
 - Pigeon Valley Fire Extent
 - Fire Origin
 - Fire Spot
 - Forward Control Point
 - Hot Spot
 - Road Block
 - Road Block
 - Wake Valley Landfill
 - Wake Valley Sewer
 - Sector Break
 - Well
 - Telephone Tower



Wakefield Evacuation Overview
(2013 Census Data)

