

Coordination facility: Richmond EOC facility	Situation Report	
Event name: Pigeon Valley fire	SITREP number: 05	
Activation status: EOC IMT activated as lead agency	Effective as at: 2300 Thu 7 February 2019	
Declared area: Tasman District	Declaration status: Declared	
	Time declared: 0800 06-02-19	Declaration expires: n/a

Summary of Incident/event: (Summary of what has happened and any critical issues/decisions made)

Note that additional and modified data will be shown in RED.

Following a declaration of a state of emergency at 0800 on 06 February, Nelson Tasman Civil Defence are the lead agency with support from Fire and Emergency Services NZ, NZ Police, and other support agencies.

Around 14:15 on 05 February 2019 a fire started in Pigeon Valley.

The burnt area has increased in size to 1873Ha. Wakefield is on standby for possible evacuations as at approximately 21:30.

An additional fire which started on Rabbit Island on 06-02-19 is being held with damping down and favourable weather conditions.

No access – gates are locked for vehicle access.

Weather forecast (Metservice as at 2034 hours):

Current: Wind: Easterly 10-15km/h, easing to light and variable 5-10km/h tonight.

Temperature: Around 18C, cooling to 13-14C overnight.

Humidity: 45-55%, increasing to 60-70% this evening.

Lifelines Utilities (Network Tasman, Chorus, Vodafone and 3 Waters) report networks are intact and no significant problems currently. Need to monitor level of Wakefield reservoir if fire risk there escalates and residents attempt pre-emptive watering to reduce their risk.

The lead agency has set the objectives for this period as:

- 1) protection of life, property, and critical infrastructure
- 2) extinguish the fire
- 3) mobilisation of resources – because of the holiday period resources are stretched and may need to be called on from neighbouring regions and other agencies.
- 4) communication with and support for our community

There are no injuries or human loss of life to date. There is a confirmed report that one dwelling has been lost. Thirteen sheep have had to be euthanised and further stock impacts are expected once access is restored.

Actions carried Out: (Summary of what support agencies are doing, what has been done since previous SITREP or Action Plan, any coordination issues and priority actions.)

- A Declaration of Local Emergency was declared at 0800 on 06-02-19

- A forward control point has been established on the Moutere Highway opposite the Go-kart track to coordinate on the ground response.
- Civic Defence Centre was established in Wakefield on 05 February, and is now mainly dealing with offers of help. An additional CDC has been identified but not yet activated – currently low demand on Wakefield CDC
- 180 properties (398 people) have been evacuated or have self-evacuated, with displaced people registering either at the Wakefield CDC or through the published phone number
- Wakefield Rest Home (22 people) was evacuated as a precautionary measure.
- Police are overseeing cordons with 13 checkpoints on affected roads with support from contractors, 6 cordons to prohibit access to evacuated areas, and 2 daytime cordons for operational safety.
- Police requested 40 staff from other districts to assist, the first group have arrived and are being deployed to cordons for overnight shifts
- Firebreaks and control lines are being utilised to contain the fire. These are largely complete on the west and north and in progress for the east. Some have been breached now.
- MPI is on site to advise on management of stock, particularly from *M bovis* affected properties
- The A&P showgrounds have been identified as a facility for displaced stock, and MPI are coordinating that response
- EOC shifts and staffing have been established as follows:
 - Shift five 18:00 to 00:00 on 07.02.2019
 - Shift six 06:00 to 18:00 on 08.02.2019
 - Shift seven 0700 to 1700 on 09.02.2019
 - Shift eight 0700 to 1700 on 10.02.2019
- Receiving numerous requests for access to properties in relation to Animal Welfare. These are being collated and forwarded to MPI for action.
- Updating database with additional info received via Needs Assessment from Community meeting
- Red Cross will be deployed to cordons for Psychological First Aid on site.
- Working with GIS on mapping evacuated properties
- NZDF resources have arrived – 3 fire tenders and 32 personnel.
- MSD has activated their Civil Defence payments and there will be a flyer available including an 0800 number (0800 559 009)
- DHB and PHO have set up a multi-agency psychosocial support service including free GP visits for those affected and possible counselling sessions
- Outreach began today – this will provide a more detailed understanding of needs of affected people.
- No-fly zone NZR670 established by CAA up to 3000feet AMSL until 1700 Mon 11 Feb.
- Greenacres road now open. Malling Road was opened at 1600, restricted resident access to some areas is being planned for later today (07-02-2019) and tomorrow (08-02-2019)
- Next Community meeting is Saturday 09-02-19 at 0900 at Appleby School.
- 70kmph temporary speed restriction imposed at SH6 between Rutherford Road and Wakefield
- Redwood Valley water supply problem has since been remedied and there is no longer a water supply problem there.
- Nelson airport's offer of up to 10,000L of A1 jet fuel has alleviated the earlier fuel concerns.
- Police cordons on Barton Lane complete; some evacuations Teapot Valley west.
- A second CDC is opened in Brightwater.
- Vodafone installing temporary cellphone tower near Wakefield on Friday 8 Feb (presently in transit).
- St Johns Church CDC will now remain open overnight given today's evacuations from Teapot Valley and Barton Ln. Contingency in place for Richmond New Life Church if needed. Brightwater Hall CDC open for public information notices only.

- Welfare outreach operations continue.

Predicted Incident/Event Progression: (How the situation is anticipated to evolve – cause factors, consequences and response.)

Fire-fighting is focused on protection of life and property and containment of the fire on the margins, however the fire is still burning in the forest. The weather conditions are not forecast to be inflammatory overnight or tomorrow. Areas on the northern front (Redwoods area) are being blacked out with the favourable weather conditions to help protect if the wind changes. The site will need to be monitored until the region receives significant rain.

Emerging issues are:

1. A potential fire outbreak to the south-east overnight that could threaten Wakefield and an easterly change could threaten Woodstock/Dovedale. There has been some evidence of ember transfer into Wakefield this evening. An evacuation contingency plan is being developed for this scenario and public messaging is being initiated as precautions only. The following bulk text alert to all Brightwater and Wakefield residents was sent by FENZ via EMA at 22:13: “ Civil Defence Alert: Wider Wakefield area, please be ready to evacuate if needed. Check www.nelsontasmancivildefence.co.nz/ for more info.”
2. Availability of commercial security services is significantly reduced now. May need to consider NZ Police or NZDF support if further CDCs are opened.
3. Reliability of classifications of safe-to-return properties uncertain, needs re-assessment.
4. On-going displacement of evacuees – people are unlikely to be able to return home until Friday at the earliest and possibly longer; signs of stress emerging, and providing information and timeframes to displaced people will become increasingly important
5. Animal welfare and access to stock is a growing concern and may become a larger issue once residents can get back to their properties
6. Stock may need to be moved from some M bovis properties if the fire changes direction, including one property with 1700 animals, so contingency planning is being done.
7. Increasing evacuee anxiety and distress over re-entry to homes and animal welfare.
8. Wakefield cellphone tower now at risk of fire (as at 2127); temporary tower to be installed Friday 8 Feb. 19.
9. Weather Outlook for Friday 8th: Fine at first, then cloudy periods developing late morning or afternoon. Afternoon or evening showers possible. Light and variable winds at first, then northeast 15-20km/h developing late morning, rising to 20-30km/h for a time in the afternoon, then becoming light and again variable in the evening. Daytime maximum 20-22C, with RH 50-60%.

Resources in Place: (Key resources being used.)

EOC IMT, welfare team
 EOC facility in Richmond
 FENZ national IMT team
 14 helicopters (with additional resources in reserve if needed)
 2 fixed wing aircraft (on standby)
 10 bull dozers
 8 diggers
 21 fire crews
 NZDF on site
 Additional Police on site.

Resources Required: (These need to be requested on separate “resource request” form but can be summarised here.)

Staff for checkpoints – in progress
 Stock welfare – MPI and Fed Farmers are assisting
 Police staff for a variety of roles – in progress

Limiting Factors: (Anything that is, or is likely to affect the effectiveness of the response.)

Fire weather behaviour is stable but sudden unforeseen changes remain a potential threat.

Assessment: (Any critical issues or assumptions made.)

Intended Actions: (Outline significant actions intended in current and subsequent operations.)

- Cross agency verification of residents and properties in threatened locations, to ensure police have accurate information for evacuations – in progress
- Contingency planning in case the fire flares up again on Friday or wind changes direction
- Identify ongoing stock needs and numbers, and accommodate displaced stock
- Get confirmed information about damage to property, including buildings
- Identify ongoing alternative accommodation needs for evacuees
- Phone calls to evacuated people to assess needs assessments (Red Cross)
- Cordons in place are shown in attached pdf appendix. – cordon access and shrinkage a priority (subject to safety) and creation of Restricted Residence Access Plan (for essential items and care of domestic animals and of livestock). Looking at **Barton Ln, Symonds Rd and Arnold Rd**, Teapot Valley (residents access only at present), Golden Hills and Eves valley – dependant on FENZ safety/risk assessment.
- Welfare priorities - animal welfare/treatment, Psychosocial support, Ongoing accommodation
- Physcosocial assements by Red Cross/Salvation/public health support with PFA
- Development of Recovery Plan
- Management of donated goods/services tasked to EOC Admin and PIM
- Planning for building inspections once zones are safe to enter.
- Next Community meeting Saturday 09-02-2019 @0900 at **Appleby School**.
- **Continue to monitor potential threat to Wakefield and Woodstock posed by ember transfer.**

Social/Community

Summary: (Summary of social/community information)

180 households have registered as evacuated and are in temporary accommodation (approximately **398** people). **There have been more evacuations but these have not been registered.** This is likely to continue for at least the next 2 nights. **The burnt area has increased in size to 1873Ha.** Animal welfare and desire to return home are emerging psychosocial issues.

People missing, injured, fatalities

Area	Missing #	Injured #	Fatalities #	Additional information
n/a	none	none	none	

Evacuations

Area	Numbers evacuated	Numbers in or requiring temporary shelter		Numbers in or requiring long term shelter		Additional information
		In	Req.	In	Req.	
Eve's Valley, Golden Hills Road, Redwood Valley Road,	180 households	4	0	0	0	

Area	Numbers evacuated	Numbers in or requiring temporary shelter		Numbers in or requiring long term shelter		Additional information
		In	Req.	In	Req.	
Malling Road, Greenacres Road, Deepdale Road, Sunrise Valley Road						
Wakefield rest home	22	22	0	0	0	
Vulnerable People relocated	6	6				

Hospitals and medical centres: (Status of these facilities, what impacts or consequences are occurring, are they managing?)
None to report

Specialist care facilities: (Status of these facilities, what impacts or consequences are occurring, are they managing?)
None to report

Educational institutions: (Status of the education sector, have schools closed?)
Not assessed by CDEM at this stage

Local businesses: (Note any changes in demand, access to inputs, distribution systems, stock holdings and supply chains)
Not assessed by CDEM at this stage

Social/community needs: (Are there any critical needs that should be outlined? Who is dealing with it/is it being dealt with?)
Welfare needs are being recorded and assessed by staff at the welfare centre and customers services staff at TDC.

Transportation status

Service	Description	Status	Definition
Road	Local roads in the vicinity of the fire are closed Pigeon Valley Road at the fire station to the last driveway before the seal in Dovedale. (Assumed 381 Dovedale Road) Moutere Highway from Redwood Road to Waimea West Road intersection Eves Valley Road Teapot Valley Road Golden Hills Road at Moutere Highway intersection. Golden Hills Road at Challies Road intersection. Access by Police discretion only at: Intersection of Redwood Valley Road and Redwood Valley Lane Green Acres Road Malling Road 70kmph temporary speed restriction imposed at SH6 between Rutherford Road and Wakefield. Cordons covering Barton Ln, Symonds and Arnold Rds.	Green	Open/working/normal

Airport	Airport – currently BAU
Port	
Rail	

Orange	Partial impact/limited service
Red	Closed/not working

Type the word and/or colour cell to match status

Area	Roads	Airports	Ports	Rail	Additional information

Lifeline utility status

(detail the extent of damage, the area affected, response taken and length of time to reinstatement)

Area	Electricity	Petroleum	Telecoms	Water	Sewerage	FMCG	Additional information
Redwood valley				Water supply now functioning			Supplies 35 properties

Lifeline utility needs: (Are there any critical needs that should be outlined? Who is dealing with it/is it being dealt with?)

Phone, power, cell phone towers all ok at present **exempt the Wakefield Vodafone site.**

Wakefield drinking water reservoir at 50% capacity but recovering.

Property status

Commercial Property: (Numbers and locations of seriously damaged and condemned)

Housing and property needs: (Numbers and locations of seriously damaged and condemned)

Not assessed by CDEM at this stage. Some minor damage to dwellings and surrounds expected, one report of building loss, no further reports of other major damage to date

Environmental status

Natural resources: (Damage resources such as plough able land, quarries, mines or water supplies)

Not assessed by CDEM at this stage

Biodiversity and ecosystems: (Habitat or foodstuff loss, destruction of plants and animals, changes in pest population dynamics)

Not assessed by CDEM at this stage

Waste and pollution: (Debris, garbage and spills, issues with large scale removal and processing of ?)

Possible issues related to disposal of dead stock animals

Environmental needs: (Are there any critical needs that should be outlined? Who is dealing with it/is it being dealt with?)

Impact on water supply has been discussed, no issue identified

Rural status

Farming community and agriculture: (Extent of impact on the farming community and response taken)

MPI and rural welfare agencies engaged and active

Rural needs: (Are there any critical needs that should be outlined? Who is dealing with it/is it being dealt with?)

Stock welfare – water is on-going issue within cordon areas - currently with logistics for water tanker resourcing.
M bovis contingency planning – 1 property within cordon identified and stock secured with M Bovis Response team advised.
 Working with cordon management for access.
 FedFarm ready to activate feed-on-line via web.

Additional information

Hazards: (Include information on the hazards such as latest MetService warnings/ information or GeoNet Volcanic Bulletin)
 Potential weather influences on ember transfer and sudden gusts threat that might escalate fire behaviour.

Priority actions: (List key priorities for the Operations Centre over the next 24 hours or period as set by the Controller)

- 1) protection of life, property, and critical infrastructure
- 2) mobilisation of resources
- 3) communication with and support for our community

Support agencies: (List of agencies involved in the response)
 Nelson Tasman CDEM Group, including Fire and Emergency New Zealand, New Zealand Police, St John's, Red Cross, RT2, NZTA, NZDF, MPI, NMDHB, MSD, TDC, Police/TPK Liaison.

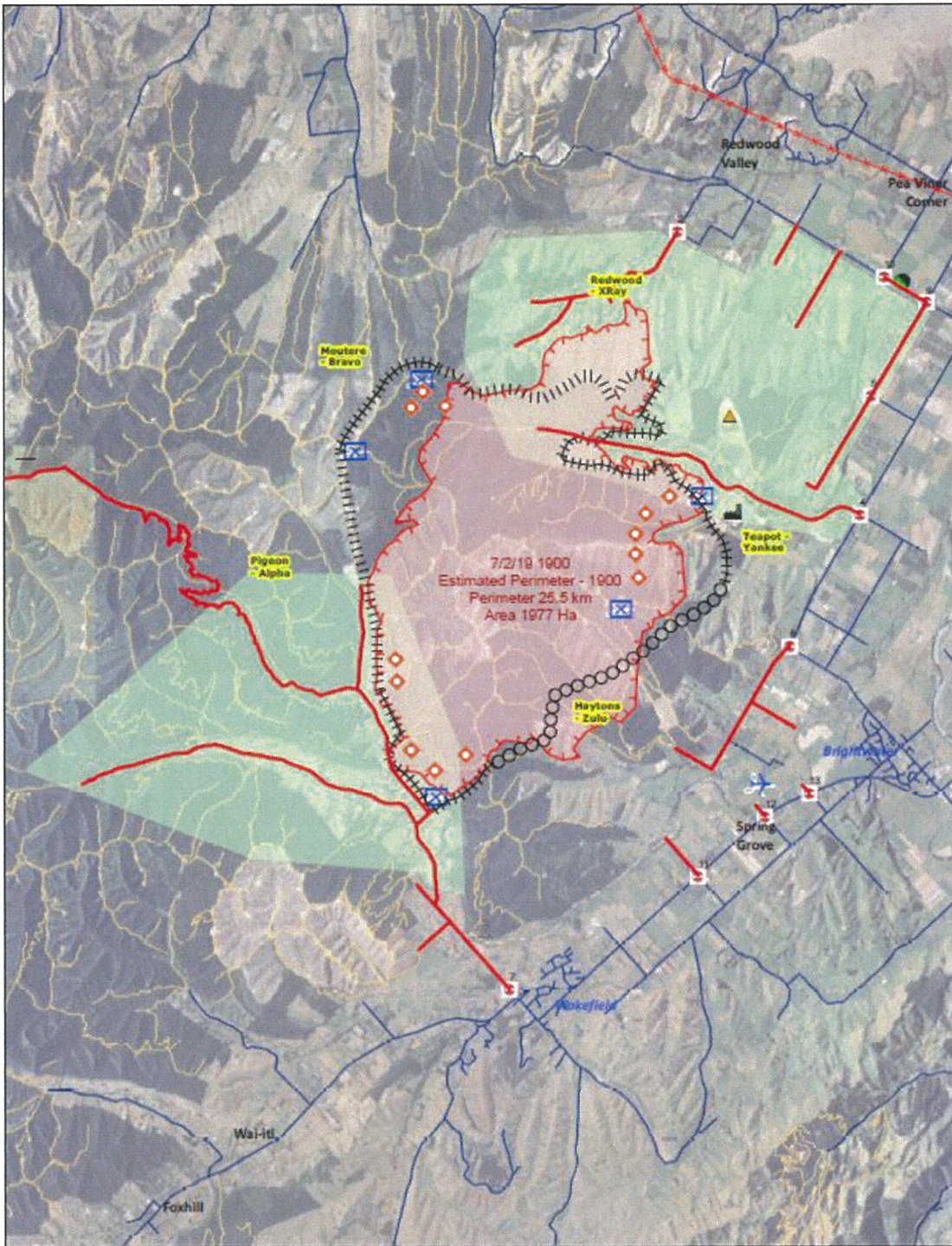
Report authorised by:
 Rob Smith, Controller

Report prepared by:
 Brennan Wiremu (P & I team)

Date/time of approval:
 07-02-2019 @ 2200

Next situation report will be issued at:
 08-02-2019 @ 0800 (TBC)

Appendix A - Cordon Control Points as at 1200



**FOR OFFICIAL USE ONLY.
NOT FOR PUBLIC DISTRIBUTION.**

Date saved: 7/02/2019, 2255 hrs
Prepared by: michael

Coordinate System: NZGD 2000 New Zealand Transverse Mercator
Projection: Transverse Mercator
Datum: NZGD 2000
Units: Metre

Sourced from Land Information New Zealand data.
Crown copyright reserved.

Scale at A3 1:50,000

Legend

- Controlled Outer Road
- Planned Outer Road
- Planned Network Road
- Private Line
- Pigeon Valley Fire Road
- Railway
- Cellphone Tower
- Wine Valley Landfill
- Wine Valley Sewer
- Fire Origin
- Proposed Control Point
- Hot Spot
- Road Block
- Police Block



Pigeon Valley Fire Overview