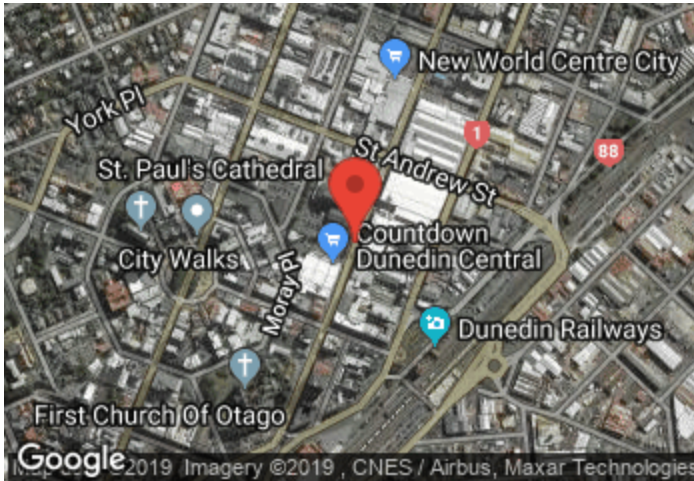


Cumberland Street

Period Analysed: Wednesday 18 February 2015 to Monday 16 September 2019



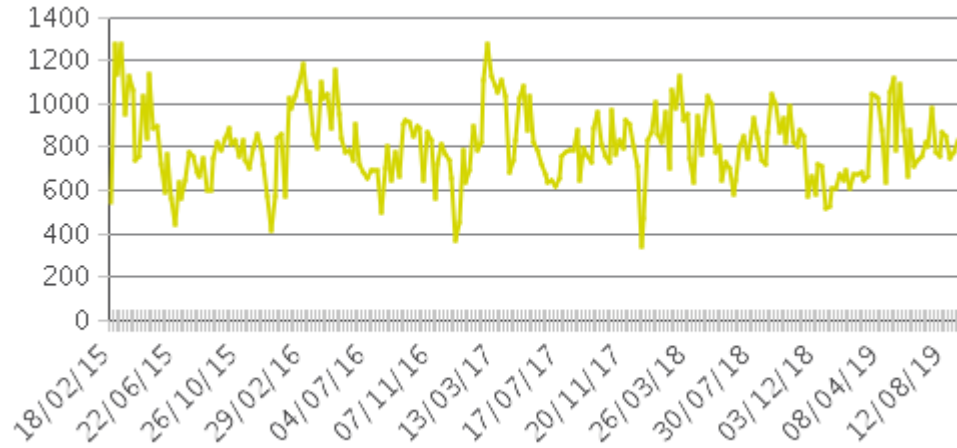
Key Figures

- Total Traffic for the Period Analysed: 193,468
- Daily Average: 116
 - Weekdays: 136 / Weekend days: 66
 - Max. Average Value (March): 143
 - Min. Average Value (December): 95
- Busiest Day of the Week: Tuesday
- Busiest Days of the Period Analysed:
 1. Tuesday 24 February 2015 (246)
 2. Monday 23 February 2015 (244)
 3. Wednesday 04 March 2015 (241)

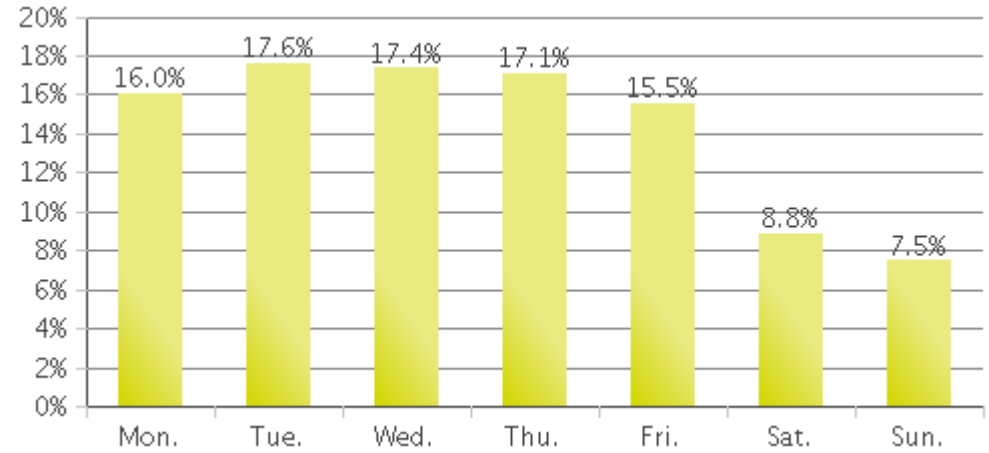
Cumberland Street

Period Analysed: Wednesday 18 February 2015 to Monday 16 September 2019

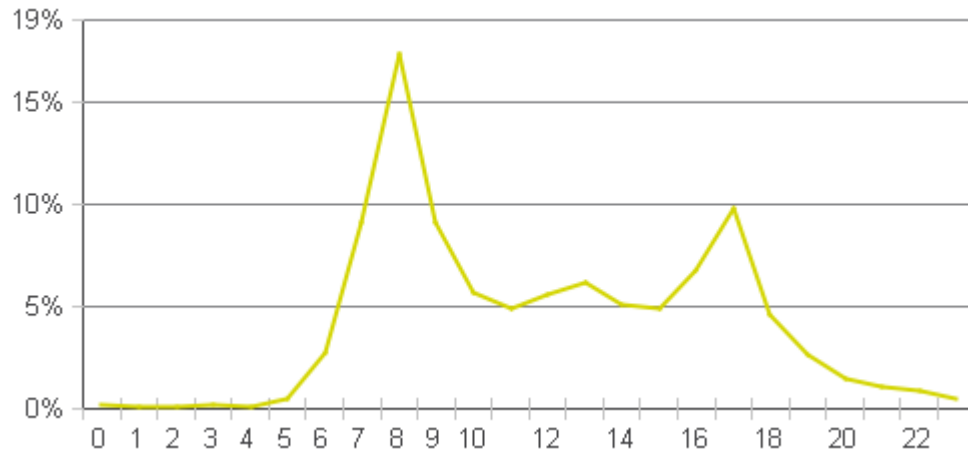
Weekly Traffic



Weekly Profile



Hourly Profile during Weekdays



Hourly Profile during the Weekend

