

11:35pm 5/2/19

until 700

Initial Attach -

### Incident Management Structure

Prepared by:  
Position:  
Date/time:  
Build/Draw your structure and fill in positions, names & radio call signs [RCS]

**Incident Controller**  
Name: [Redacted]  
RCS: [Redacted]

**Information** [Redacted]  
**Safety** [Redacted]  
**Liaison** [Redacted]

**Planning/Intelligence**  
Name: [Redacted]  
RCS: [Redacted]

**Operations**  
Name: [Redacted] (Deputy)  
RCS: [Redacted]

**Logistics**  
Name: [Redacted]  
RCS: [Redacted]

Situation [Redacted]  
Resources [Redacted]  
Management support [Redacted]  
Intelligence/Information [Redacted]  
Advanced planning [Redacted]

[Redacted] (Ops)

Supplies [Redacted]  
Facilities [Redacted]  
Communication [Redacted]  
Medical [Redacted]  
Catering [Redacted]  
Finance [Redacted]

Structure Protection (FCP)  
[Redacted] (ICP)

Rural Crews across a Structure Protection

Structure Protection Crews

### Operational Tasking

Sector	Resource	Task	Grid	Tasked at hrs
Pigeon	Pigeons	Create Water Points		2330
	NPI Animal Welfare	Flying in team		2000

Any Question Ring [Redacted]

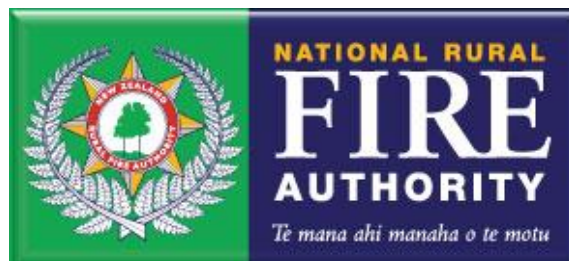
# IAP Cover Sheet

## INCIDENT ACTION PLAN

The items checked below are included in the incident Action Plan

- SITUATION REPORT
- INCIDENT OBJECTIVES
- ORGANISATIONAL LIST
- SECTOR ASSIGNMENT
- DIVISIONAL ASSIGNMENT
- AIR OPERATIONS PLAN
- COMMUNICATION PLAN
- SAFETY PLAN
- MEDICAL PLAN
- FIRE MAP
- WEATHER FORECAST AND MAP
- FIRE BEHAVIOUR FORECAST
- FACILITIES LAYOUT PLAN

Approved by Incident Controller:	Signed	Date/Time





1. Pigeon Valley	2. 6Feb2019 0700 to 1900
------------------	--------------------------

# Situation Report

RF201

1. Incident Name Pigeon Valley	2. Operational Period	SITUATION REPORT RF201
	Date 6 <sup>th</sup> Feb 20 Time 04:30	
3. Location Pigeon Rd, Eves Valley ,Tasman	4. Vegetation Forest/Scrub/Grass/Slash/	5. NZ TM Grid Ref. 41°22'32.51"S 173° 1'31.81"E
6. Assessment		
<p>A large scrub/ forest fire is currently burning estimated to be 1870ha at 00:30 hrs with a perimeter of 20km.</p> <p>Values at risk are life and property.</p> <p>We have unconfirmed reports of potential property losses in Eves Valley and Redwood Valley</p> <p>The Eves Valley sawmill is at risk and fire crews are carrying out structural protection on structures.</p> <p>Evacuations have occurred in the</p> <ul style="list-style-type: none"> <li>• Eves Valley,</li> <li>• Golden Hills Rd,</li> <li>• Redwood Valley Rd</li> <li>• Mallings Rd</li> <li>• Greenacres Rd</li> </ul> <p>We have confirmed records of 74 households (97 people) evacuated.</p> <p>Notice of potential evacuations in place for Sunrise Valley (top end), Deepdale Rd (Upper Moutere), Pigeon Valley and South Pigeon Valley.</p> <p>Crews are working in these areas as much as they can do safely, but fire conditions are proving challenging. At times crews have needed to retreat from property protection as dense smoke and ember attack meant conditions were too dangerous.</p>		

Prepared by: [REDACTED]	Date: 6Feb2019	Time: 0445
-------------------------	----------------	------------

1. Pigeon Valley	2. 6Feb2019 0700 to 1900
------------------	--------------------------

**7. Action taken**

Six helicopters worked on the fire during yesterday afternoon and evening and another six are confirmed for this morning for suppression activities. Two fixed wing planes have also been requested for this morning.

A National Incident Management Team has been organised to assist the operations and is planned to commence arrival at 10am this morning.

Extreme fire behaviour has made it difficult for ground crews to directly work on the fire. These crews are being tasked with structure protection and controlling the fire when it has spotted onto grassland.

**8. Factors**

On Tuesday strong winds fanned the forest fire and the fire itself was creating its own extreme fire behaviour. Fire behaviour at night was still very active with highly flammable grass and scrubland carrying the fire.

The wind shift to a light northerly at midnight, is now forecast to happen at dawn (Wednesday)

**9. Predicted Incident Development**

Rates of spread were very fast on the afternoon and evening of the first day with the fire travelling 5km in 6 hours, through production forest area and into cured grassland.

Rates of spreads decreased during the night but with highly flammable fuels, the fire behaviour is extreme and unpredictable.

Winds are planned to ease in the morning possibly with a small amount of rain and a northerly change. Strong northerly winds are expected to develop this afternoon (Wednesday 6<sup>th</sup> Feb). Contingency plans for this are currently being worked on.

<p>10. Prepared by: [REDACTED]          Authorised by [REDACTED] (Incident controller)</p>	<p>Date/Time 04:30 6<sup>th</sup> Feb 2019</p>
--	--

Prepared by: [REDACTED]	Date: 6Feb2019	Time: 0445
-------------------------	----------------	------------

1. Pigeon Valley	2. 6Feb2019 0700 to 1900
------------------	--------------------------

# Incident Objectives

RF202

<p><b>3. Overall Incident Objectives</b></p> <ul style="list-style-type: none"> <li>Protect life (Public and Residents)</li> <li>Protect Property</li> <li>Identify and keep stakeholders informed</li> <li>Ensure Firefighter Safety</li> <li>Identify and protect Critical Infrastructure</li> <li>Transition to NIMT using shadow process by 1500hrs</li> <li>Protect Other Assets (Forests, crop etc)</li> <li>Prepare for Northerly Wind Change</li> <li>Contain then Extinguish fire</li> </ul>
<p><b>4. Objectives for specified Operational Period</b></p> <ul style="list-style-type: none"> <li>Protect life (Public and Residents)</li> <li>Identify and keep stakeholders informed</li> <li>Allow for Firefighter Safety</li> <li>Identify and protect Critical Infrastructure</li> <li>Transition to NIMT by 1500hrs</li> <li>Establish High volume Water Supplies</li> <li>Protect property and critical infrastructure by establishing hard containment lines with heavy equipment or Identify opportunities for laying down retardant ahead of wind change to protect property/infrastructure</li> <li>Establish trigger points with 3hrs lead-time for evacuations</li> </ul>

Prepared by: ██████████	Date: 6Feb2019	Time: 0445
-------------------------	----------------	------------

1. Pigeon Valley	2. 6Feb2019 0700 to 1900
------------------	--------------------------

# Organisation List

RF203

3. Incident Control		Cell Phone	Radio Ch
Incident Controller	██████████ (Day)	██████████	
Deputy IC	██████████ (Night)		
Information Officer	██████████		
Safety Officer	██████		
Liaison Officer			
4. Agency Representative		Cell Phone	Radio Ch
Lead Agency	FENZ ██████████ PRFO	██████████	
Agency	Police ██████████ ██████████		
Agency	CDEM ██████████ CDEM Duty Phone		
Agency	FENZ Urban Liason ██████████ ██████		
5. Planning/Intell Section		Cell Phone	Radio Ch
Planning/Intell Manager	██████████	██████████	
Situations Unit	██████████ (Night)		
	██████████ (Day)		
	██████████ (Day)		
	██████████ (GIS)		
	██████████		
Resources Unit	██████████ (EoC)		
	██████████ (Caravan Check in)		
Management Support Unit	██████████		
Information Unit			
Advance Planning Unit			
Technical Specialists Unit			
6. Logistics Section		Cell Phone	Radio Ch

Prepared by: ██████████	Date: 6Feb2019	Time: 0445
-------------------------	----------------	------------

<b>1. Pigeon Valley</b>	<b>2. 6Feb2019 0700 to 1900</b>
-------------------------	---------------------------------

Logistics Manager	██████████ (Day)	██████████	
	██████████ (Night)		
Supply Unit	██████████		
Catering Unit	██████████		
Facilities Unit			
Finance Unit			
Communications Unit			
Welfare Unit	██████████	██████████	
Medical Unit	██████████		
Ground Support Unit			

<b>7. Operations Section</b>		<b>Cell Phone</b>	<b>Radio Ch</b>
Operations Manager	██████████	██████████	Waimea 1
Deputy Operations Manager	██████████		Waimea 1
Division Pigeon Commander	██████████		Fire 1
Division Hayton Commander	██████████		Fire 2
Division Teapot Commander	██████████		Fire 3
Division Redwood Commander			Fire 1
Division Moutere Commander	██████████		Fire 2
Division Two Commander			
Sector E Supervisor			
Sector F Supervisor			
Sector G Supervisor			
Sector H Supervisor			
Air Division Commander			
Air Attack Supervisor	██████████	██████████	Fire 4
Air Support Supervisor	██████████	██████████	

<b>Prepared by:</b> ██████████	<b>Date:</b> 6Feb2019	<b>Time:</b> 0445
--------------------------------	-----------------------	-------------------

1. Pigeon Valley	2. 6Feb2019 0700 to 1900
------------------	--------------------------

# Sector Assignment

RF204

<b>3. Sector</b>		<b>4. Description</b>		<b>5. Division Assigned</b>	
<b>6. Sector Supervisor</b>		Affiliation	Cellphone	Radio Ch	
<b>7. Resources Assigned this period</b>					
<i>Resource/Crew</i>	<i>Leader</i>	<i># Persons</i>	<i>Transport Required</i>	<i>Drop-off Point/time</i>	<i>Pickup Point/time</i>
<b>8. Sector Assignment / Special Instructions</b>					
<b>9. Sector Communications</b>				<i>Phone</i>	<i>Radio Ch</i>
Division/Division Cmdr					
Air Attack Supervisor					
Safety Officer					

Prepared by: [REDACTED]	Date: 6Feb2019	Time: 0445
-------------------------	----------------	------------



1. Pigeon Valley	2. 6Feb2019 0700 to 1900
------------------	--------------------------

# Division Assignment

RF204a

<b>3. Pigeon</b>		<b>4. Point of ignition to Dove Saddle</b>	
<b>6. Sector Commander</b> ██████████	Affiliation Tasman VRRF	Cellphone ██████████	Radio Ch Fire 1
<b>6. Resources Assigned this Period</b>			
<i>Sector</i>	<i>Supervisor</i>	<i>Crews</i>	<i>Radio Ch</i>
2 Taylors D8 jd850	1x HEQB		
2 Taylors Excavator	1xHEQB		
Tasman VRRF 4px West Coast ██████████ +3px			
1 Smoke chaser + 2px Hira			
1 Appliance + 4px Hira			
1 rural tanker			
<b>7. Division Assignment/Special Instructions</b> <b>Protect Life and Property</b> <b>Keep Residents and Stakeholders informed in preparation for potential north easterly wind change</b> <b>Dozer to establish hard containment lines for property/infrastructure protection</b> <b>Excavator to Establish high volume water supplies Wai-iti river Baigents Rd first and end of Hoult Valley Rd second</b> <b>Provide Situation Report to Situations Unit at least every two hours</b> <b>*Laydown Retardant to protect properties</b>			
<b>8. Division Communications</b>		<i>Phone</i>	<i>Radio Ch</i>
Operations Manager _____			
Air Division Commander _____			

Prepared by: ██████████	Date: 6Feb2019	Time: 0445
-------------------------	----------------	------------

1. Pigeon Valley	2. 6Feb2019 0700 to 1900
------------------	--------------------------

# Division Assignment

RF204a

<b>3. Haytons</b>		<b>4. Point of ignition to Teapot Valley Rd end</b>	
<b>6. Sector Commander</b> ██████████	Affiliation DoC Motueka	Cellphone ██████████	Radio Ch Fire 2
<b>6. Resources Assigned this Period</b>			
<i>Sector</i>	<i>Supervisor</i>	<i>Crews</i>	<i>Radio Ch</i>
TLC Bulldozer D7	██████████		
TLC Excavator			
Appleby VRFF 4px North Canterbury ██████████ ██████████ +3px Nelson Lakes VRFF 4px			
1x smoke chaser			
1x appliance			
2x rural tanker			
<b>7. Division Assignment/Special Instructions</b> Protect life and Property Keep Residents and Stakeholders informed in preparation for potential north easterly wind change 1x Excavator establish High Volume Water Points Wai-iti River end of Bird Lane 1x Bulldozer for Property/Infrastructure Protection and Establish hard containment line along Haytons Rd Ground crew begin 5m blackout of flank Provide Situation Report to Situations Unit at least every two hours *Laydown Retardant to protect properties			
<b>8. Division Communications</b>		<i>Phone</i>	<i>Radio Ch</i>
Operations Manager _____			
Air Division Commander _____			

Prepared by: ██████████	Date: 6Feb2019	Time: 0445
-------------------------	----------------	------------

1. Pigeon Valley	2. 6Feb2019 0700 to 1900
------------------	--------------------------

# Division Assignment

RF204a

<b>3. Teapot</b>		<b>4. Eves Valley Rd to Golden Hills Rd</b>	
<b>6. Sector Commander</b> ██████████	Affiliation Wakefield VFB/NML	Cellphone ██████████	Radio Ch Fire 3
<b>6. Resources Assigned this Period</b>			
<i>Sector</i>	<i>Supervisor</i>	<i>Crews</i>	<i>Radio Ch</i>
1 Taylors Bulldozer D8			
1 Taylors Excavator			
Wakefield VFB 4px DoC crew 4px Ngatimoti VFFF 4px			
4x Urban crew			
2x rural tankers			
<b>7. Division Assignment/Special Instructions</b> Protect life and Property Keep Residents and Stakeholders informed in preparation for potential north easterly wind change Establish High Volume Water supply end of Bells rd Wai iti River with Excavator 1x Bulldozer for Property/Infrastructure Protection first, Establish hard containment line on Eastern Flank/Eder Rd? Urban crew for Protection of Eves Valley Mill or other properties as required Provide Situation Report to Situations Unit at least every two hours *Laydown Retardant to protect properties			
<b>8. Division Communications</b>		<i>Phone</i>	<i>Radio Ch</i>
Operations Manager			
Air Division Commander			

Prepared by: ██████████	Date: 6Feb2019	Time: 0445
-------------------------	----------------	------------

1. Pigeon Valley	2. 6Feb2019 0700 to 1900
------------------	--------------------------

## Division Assignment

RF204a

3. Redwood		4. Golden Hills Rd to Cut Hill Rd	
6. Sector Commander <b>Urban Officer to be Confirmed</b>		Affiliation FENZ	Cellphone
			Radio Ch Fire 1
6. Resources Assigned this Period			
<i>Sector</i>	<i>Supervisor</i>	<i>Crews</i>	<i>Radio Ch</i>
1 Dozer Burson D65 Komatsu			
1 TLC Excavator			
AFM 4px DoC crew 4px			
7. Division Assignment/Special Instructions <b>Protect Life and Property</b> <b>Keep Residents and Stakeholders informed in preparation for potential north easterly wind change</b> <b>Evacuation and notification of preparation for evacuation</b> <b>Excavator to identify and establish access for high volume water supply in existing ponds</b> <b>1x Bulldozer for Property/Infrastructure Protection assisted by ground crew</b> <b>Contain fire South of Moutere Highway and West Golden Hills Rd</b> <b>Urban crew for protection of Eves Valley Hazardous Landfill</b> <b>Provide Situation Report to Situations Unit at least every two hours</b> <b>*Laydown Retardant to protect properties and provide containment</b>			
8. Division Communications		<i>Phone</i>	<i>Radio Ch</i>
Operations Manager			
Air Division Commander			

Prepared by: [REDACTED]	Date: 6Feb2019	Time: 0445
-------------------------	----------------	------------

1. Pigeon Valley	2. 6Feb2019 0700 to 1900
------------------	--------------------------

## Division Assignment

RF204a

3. Moutere		4. Cut Hill Rd to Dove Hill Saddle	
6. Sector Commander ██████████	Affiliation Bruce Forestry	Cellphone ██████████	Radio Ch Fire 2
6. Resources Assigned this Period			
<i>Sector</i>	<i>Supervisor</i>	<i>Crews</i>	<i>Radio Ch</i>
Taylor's Hitachi 20T Excavator (on site)		Taylor's	TPFL Ops 2
1 TLC Excavator ?			
1 Taylor's Dozer			
3x 4px crews TBC 1000hrs? 2x 4px mid Canterbury West Coast 4px			
7. Division Assignment/Special Instructions Protect Life and Property Keep Residents and Stakeholders informed in preparation for potential north easterly wind change Excavator to Identify and Establish high volume water access to existing ponds 1x Bulldozer for Property/Infrastructure Protection, sunrise valley, establish escape routes Taylor's Excavator to establish escape route/access down Supplejack Valley rd and Sunrise/Heines rd Provide Situation Report to Situations Unit at least every two hours *Laydown Retardant to protect properties			
8. Division Communications		<i>Phone</i>	<i>Radio Ch</i>
Operations Manager			
Air Division Commander			

Prepared by: ██████████	Date: 6Feb2019	Time: 0445
-------------------------	----------------	------------





1. Pigeon Valley	2. 6Feb2019 0700 to 1900
------------------	--------------------------

7. Air Operations Special Equip or Service

## Communications Plan

RF205

3. Radio Channels				
<i>Assigned To</i>	<i>Function</i>	<i>Channel</i>	<i>Frequency</i>	<i>System</i>
Command		Waimea 1	152.55000 RX 154.33125 TX	
Division Pigeon	Operational	Fire 1	143.82500	
Division Hayton	Operational	Fire 2	143.78750	
Division Teapot	Operational	Fire 3	140.92500	
Division Redwood	Operational	Fire 1	143.82500	
Division Moutere	Operational	Fire 2	143.78750	
Air Ops -Heli	Operational	Fire 4	140.61250	
Air Ops – Fixed Wing	Operational	Fire 10	140.98750	
Emergency		Waimea 1	152.55000 RX 154.33125 TX	
FireCom		FireCom		
4. Telephone				
<i>Assigned To</i>	<i>Landline</i>	<i>Cell phone</i>	<i>Fax</i>	<i>Comments</i>
Emergency		111		
Regional Command Centre (RCC)				
6. Other (e.g. email, Satphone, etc)				
GIS Mapping	planning.intelligence@nelsontasmancdem.govt.nz			
ICP	Reception.nelsontasman@fireemergency.nz			
Command Unit	<a href="mailto:lucy.nelson@fireemergency.nz">lucy.nelson@fireemergency.nz</a>			

Prepared by: <span style="background-color: black; color: black;">XXXXXXXXXX</span>	Date: 6Feb2019	Time: 0445
---	----------------	------------

# Safety Plan

RF209

## 3. General Safety Points

Everyone is to be signed in and out of the fire ground through the Incident Control Point for both safety check and payment records.

Maintain regular situation reports (containing all relevant information) via line supervisors.

LACES	Fire Orders	Watchouts
<b>L - Lookout(s)</b> <b>A – Awareness</b> – Anchor Point(s) <b>C – Communication(s)</b> <b>E – Escape Route(s)</b> <b>S – Safety Zone(s)</b>	<ol style="list-style-type: none"> <li>conditions and forecasts</li> <li>Know what your fire is doing at all times.</li> <li>Base all actions on current and expected fire behaviour of the fire.</li> <li>Identify escape routes and safety zones and make them known.</li> <li><b>Post</b> lookouts when there is possible danger.</li> <li><b>Stay</b> alert. Keep calm, Think clearly, act decisively.</li> <li>Maintain prompt communication with your crew/s, your supervisor and adjoining crews.</li> <li>Give clear instructions and ensure they are understood.</li> <li>Maintain control of your crew/s at all times.</li> <li>Fight fire aggressively having provided for safety first.</li> </ol>	<ol style="list-style-type: none"> <li>Fire size is unknown (no size up).</li> <li>Unfamiliar territory</li> <li>Safety zones and escape routes not identified.</li> <li>Unfamiliar with weather and local factors influencing fire behaviour.</li> <li>No communications link with crew members or supervisor.</li> <li>Instructions and assignments not clear.</li> <li>Weather is getting hotter , drier and relative humidity dropping</li> <li>Wind increases and/or changes direction.</li> <li>Getting frequent spot fires across the line</li> <li>Working uphill or downwind of a fire</li> <li>Working on a steep slope</li> <li>Working in rugged terrain</li> <li>Can't see main fire</li> <li>In unburnt vegetation</li> <li>Walking through hot ashes</li> <li>Working alone</li> <li>Getting tired</li> <li>Working near power lines</li> <li>Working near machinery</li> <li>Working with aircraft</li> <li>Working around trees or spars</li> </ol>

## 4. Specific Safety Points

- **Access points into fire controlled. Only those authorized to enter and they must receive a brief and be logged in. Time and access point**
- **Public access Managed**
- **Weather fire behaviour monitored for changes and communicated to crews. Risk identified to crews**
- **All crews to have adequate food, water, PPE to manage fatigue and hydration**
- **Crews to have identified emergency escape routes and emergency plan in the event of harm. Meeting point identified once evacuated.**
- **All workers to ensure they are competent for the tasks and risks given.**
- **Air and ground crews to be isolated from risk areas during operations.**
- **Potential methane flares (Division Hayton) from Eves Valley Landfill**

1. Pigeon Valley	2. 6Feb2019 0700 to 1900
------------------	--------------------------

# Medical Plan

RF206

3. First Aid Station		Phone/Radio Channel	Paramedics available at Station				
Name	Location						
Each Crew must have available one First aid Level 1 Certified	Each crew						
Nelson 91 Ambulance	Forward command post	Waimea 1	1 Paramedic and 1 EMT				
4. Transportation Ambulance Service		Address	Phone/Radio Channel	Paramedics available with Ambulance			
Ambulance St Johns	Richmond station	111	Yes				
	Motueka/Stoke Nelson/						
5. Hospitals		Address	Phone	Travel Time Road	Air	Burn Unit	Heli Pad
Hospital Name							
Nelson Public Emergency	Waimea Rd.	035461800	27m	4min	y	y	
Hutt Hospital (Burn Unit)		045666999	n/a	40min	Y	y	
6. Special Emergency Procedures							
Emergency Helicopter stationed at Nelson Airport "111"							
8. Reviewed by Safety Advisor:						Date/Time	

Prepared by: [REDACTED]	Date: 6Feb2019	Time: 0445
-------------------------	----------------	------------

1. Pigeon Valley	2. 6Feb2019 0700 to 1900
------------------	--------------------------

FIRE WEATHER FORECAST

For Location [redacted] Pidgeon Valley near Wakefield

Issued by MetService at 01:38am 06-Feb-2019, and valid for the following 9 hours

Wind: Light southerly (5-10km/h) turning northeast to northerly around dawn.

**Precipitation:**

A few light showers this morning may bring about 1-2mm of rain, clearing late morning.

**Temperature:**

About 16C, rising to 20C midday.

**Humidity:** 70%, lowering to 50% midday.

**Outlook for the next 12 hours :**

Northeast to northerly winds rising to 20 to 30km/h in the afternoon.

Weather becoming fine, with temperatures in the low 20's this afternoon, humidity 40-50%.

Winds easing in the evening and turning light southeast to southerly.

**Outlook for next 6 days:**

Thursday: Light winds, sunny, dry and max temperature around 21C.

Friday: Light winds, sunny, dry and max temperature around 20C.

Saturday: Light winds, sunny, dry and max temperature around 22C.

Sunday: Northerlies, partly cloudy, a few light showers and max temperature about 22C.

Monday: Northerlies and rain, max temperature around 21C.

Tuesday: Light winds, sunny and max temperature around 23C.

Fire Indices for Wednesday 6<sup>th</sup> Feb 2019

FFMC 86 (easy Ignition)

DMC 96.8

DC 457

ISI 4.7 (moderately fast rate)

BUI 126 (Extreme)

FWI 20.8 (high fire intensity)

Prepared by: [redacted]	Date:6Feb2019	Time: 0445
-------------------------	---------------	------------

1. Pigeon Valley	2. 6Feb2019 0700 to 1900
------------------	--------------------------

### FIRE BEHAVIOUR FORECAST

<b>Fire name:</b> Pigeon Road				<b>Prediction for:</b> 0800-1800 06 Feb-19					
<b>Prepared by:</b> ██████████				<b>Time and date issued:</b> 0300 Feb 19					
<b>Forecast no.</b> 1				Day Shift					
<i>Assumptions:</i>				<i>today's forecast</i>					
<b>Temp</b>	<b>RH</b>	<b>Wind</b>	<b>Slope *</b>	<b>FFMC</b>	<b>DMC</b>	<b>DC</b>	<b>ISI</b>	<b>BUI</b>	<b>FWI</b>
17	71	13	0	86	97	457	4.7	127	21

Rates of spread are the equilibrium rate of spread, not the build-up phase, with continuous fuel and similar fuel type.

**Fire Behaviour General:**

Released under the Official Information Act

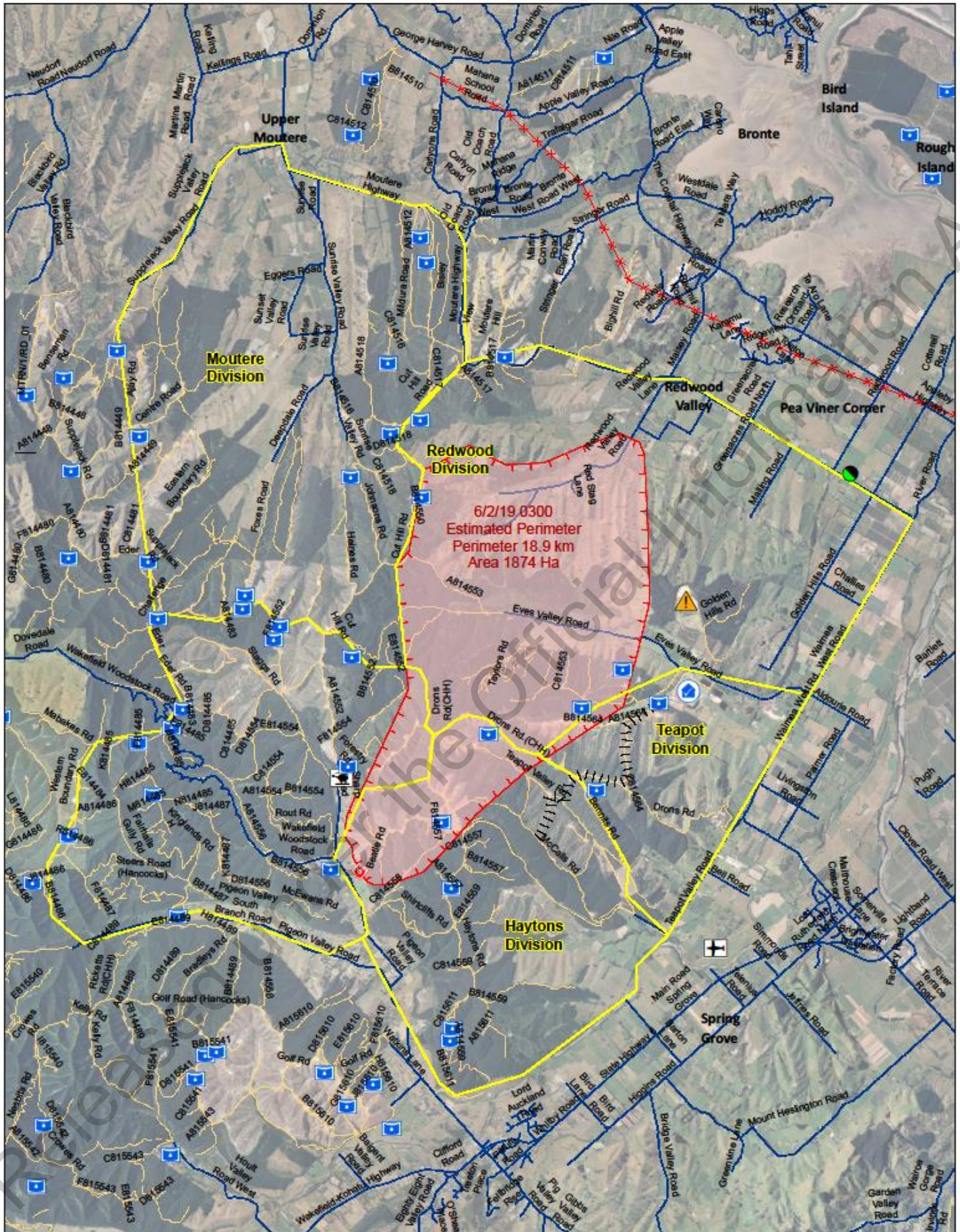
<b>Prepared by:</b> ██████████	<b>Date:</b> 6Feb2019	<b>Time:</b> 0445
--------------------------------	-----------------------	-------------------

1. Pigeon Valley	2. 6Feb2019 0700 to 1900
------------------	--------------------------

<b>Expected fire behaviour</b> – slope 0°	<b>Forecast</b> worst case – 28°C 45%RH slope 20° 1400-1800
<i>Fuel type: Mature Pine – 5m pruned</i>	<i>Fuel type: Mature Pine – 5m pruned</i>
Expect HF rate of spread of 10-40 m/hr HF Intensity 200-700 kw/m Flame lengths 1-1.5	Expect HF rate of spread of 200 m/hr HF Intensity 2100 kw/m Flame lengths 3 m
<i>Fuel type: Scrub/gorse 2m height</i>	<i>Fuel type: Scrub/ gorse 2m height</i>
Expect HF rate of spread of 500-1000 m/hr HF Intensity <10000 kw/m Flame lengths 7.2 m	Expect HF rate of spread of 3000 m/hr HF Intensity >10000 kw/m Flame lengths 13 m
<i>Fuel type: Grass-70% GC, 100% cover, 0.1m height</i>	<i>Fuel type: Ungrazed Grass -70% GC, 100% cover, 0.2m height</i>
Expect HF rate of spread of 100-200 m/hr HF Intensity 150-350 kw/m Flame lengths 1.2 m	Expect HF rate of spread of 600 m/hr HF Intensity 1050 kW/m Flame lengths 2 m
<b>Safety Considerations:</b>	
Head Fire intensity, and flank fire intensity exceed threshold for direct attack in gorse/ scrub fuels.	Head Fire intensity exceed threshold for direct attack in gorse and mature pine fuels, and flank fires in gorse. Flank fires intensity is now too high for ground crews
. Northerly change in the morning will move the head of the fire to the south/ eastern flank as the wind strengthens during the day. The nature of the fuels means that fire behaviour has the potential for extreme fire behaviour especially with wind, temperature and fuel changes.	

Prepared by: [REDACTED]	Date: 6Feb2019	Time: 0445
-------------------------	----------------	------------



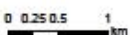


**FOR OFFICIAL USE ONLY.  
NOT FOR PUBLIC DISTRIBUTION.**

Date saved: 6/02/2019, 0417 hrs  
Prepared by: kilmenys

Coordinate System: NZGD 2000 New Zealand Transverse Mercator  
Projection: Transverse Mercator  
Datum: NZGD 2000  
Units: Meter  
Sourced from Land Information New Zealand data.  
Crown copyright reserved.

Scale at A3 1:52,511

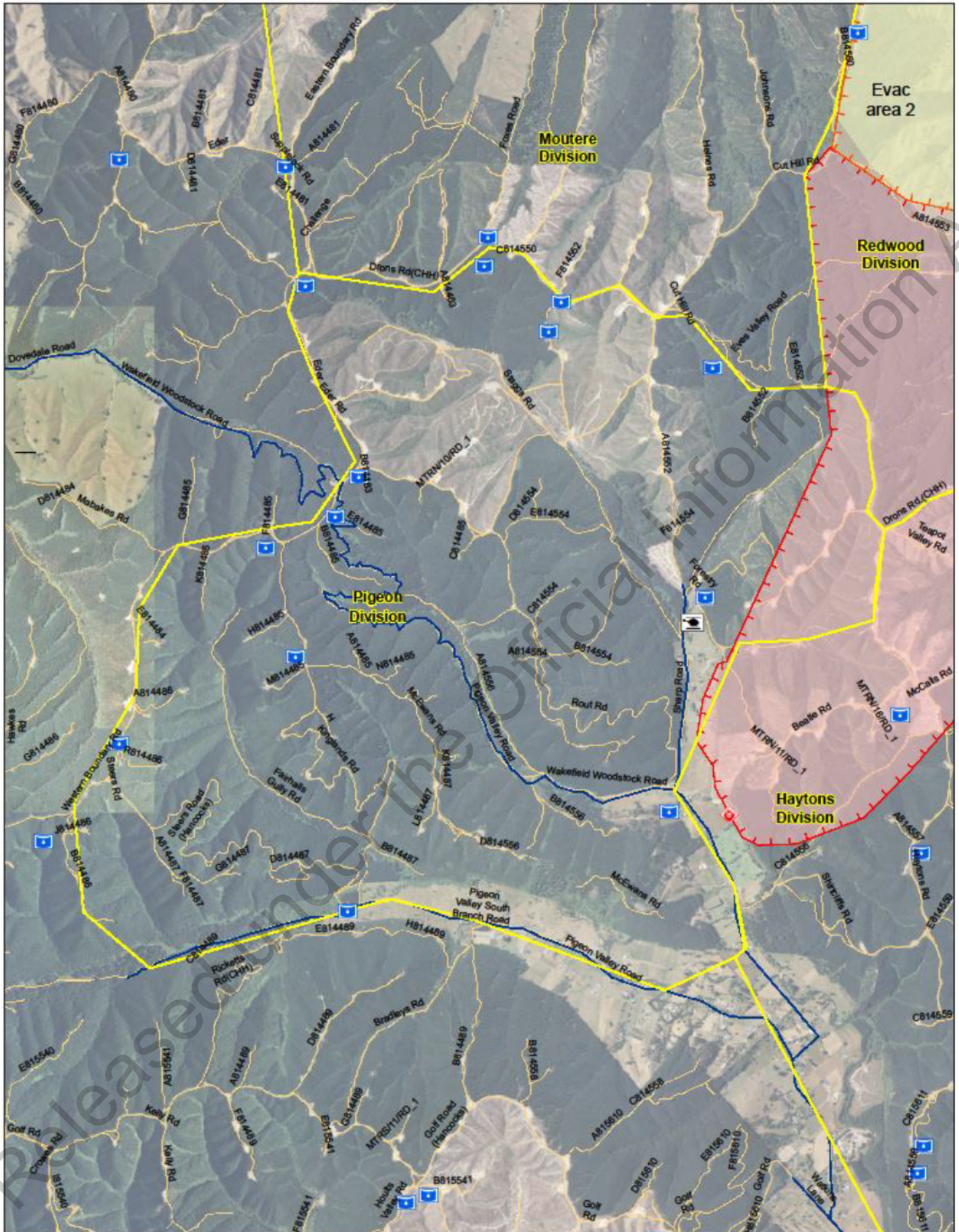


- Eves Valley Landfill
- Eves Valley Sawmill
- Fire Origin
- Forward Control Point
- Helicopter base
- Fire Sectors
- Pigeon Valley Fire Extent
- Pigeon Valley Fire Extent



## Pigeon Valley Fire Overview



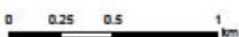


**FOR OFFICIAL USE ONLY.  
NOT FOR PUBLIC DISTRIBUTION.**

Date saved: 6/02/2019, 0400 hrs  
Prepared by: kilmenys

Coordinate System: NZGO 2000 New Zealand Transverse Mercator  
Projection: Transverse Mercator  
Datum: NZGO 2000  
Units: Meter  
Sourced from Land Information New Zealand data.  
Crown copyright reserved.

Scale at A3 1:25,000



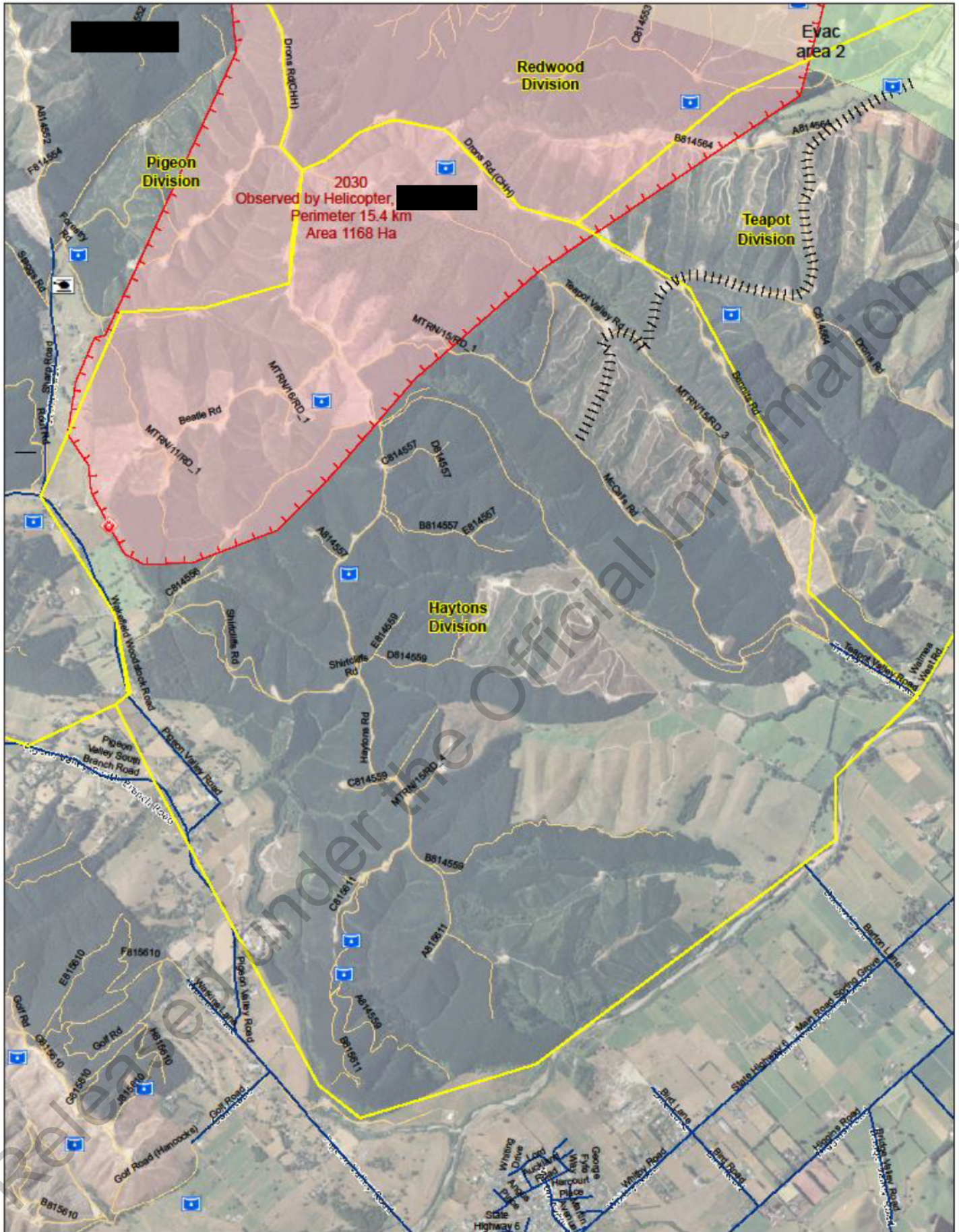
**Legend**

- Waterpoints
- Fire Origin
- Helicopter base
- Fire Sectors
- Pigeon Valley Fire Extent**
- Estimated based on Police report at Malsey Road
- Observed by Helicopter.



**Pigeon Division**



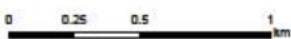


**FOR OFFICIAL USE ONLY.  
NOT FOR PUBLIC DISTRIBUTION.**

Date saved: 6/02/2019, 0346 hrs  
Prepared by: kilmenys

Coordinate System: NZGO 2000 New Zealand Transverse Mercator  
Projection: Transverse Mercator  
Datum: NZGO 2000  
Units: Meter  
Sourced from Land Information New Zealand data.  
Crown copyright reserved.

Scale at A3 1:20,000



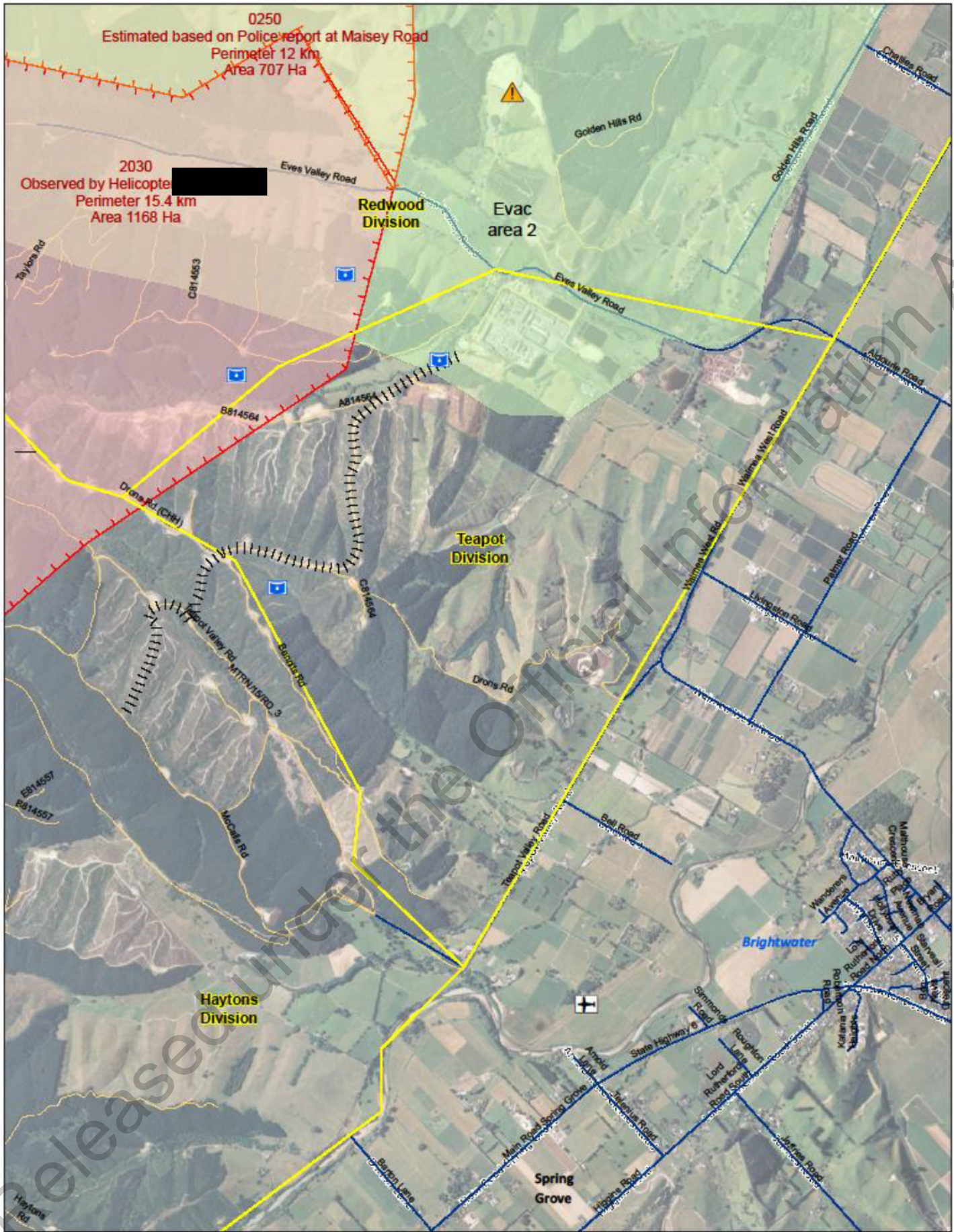
**Legend**

- Waterpoints
- EM\_EventLine
- Fire Origin
- Helicopter base
- FireSectors
- Pigeon Valley Fire Extent
- Observed by Helicopter, [redacted]



Haytons Division





**FOR OFFICIAL USE ONLY.  
NOT FOR PUBLIC DISTRIBUTION.**

Date saved: 6/02/2019, 0346 hrs

Prepared by: kilmenys

Coordinate System: NZGO 2000 New Zealand Transverse Mercator

Projection: Transverse Mercator

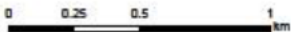
Datum: NZGO 2000

Units: Meter

Sourced from Land Information New Zealand data.

Copyright reserved.

Scale at A3 1:20,000



**Legend**

Waterpoints

EM\_EventLine

Airstrip

Eves Valley Landfill

FireSectors

**Pigeon Valley Fire Extent**

Estimated based on Police report at Maisey Road

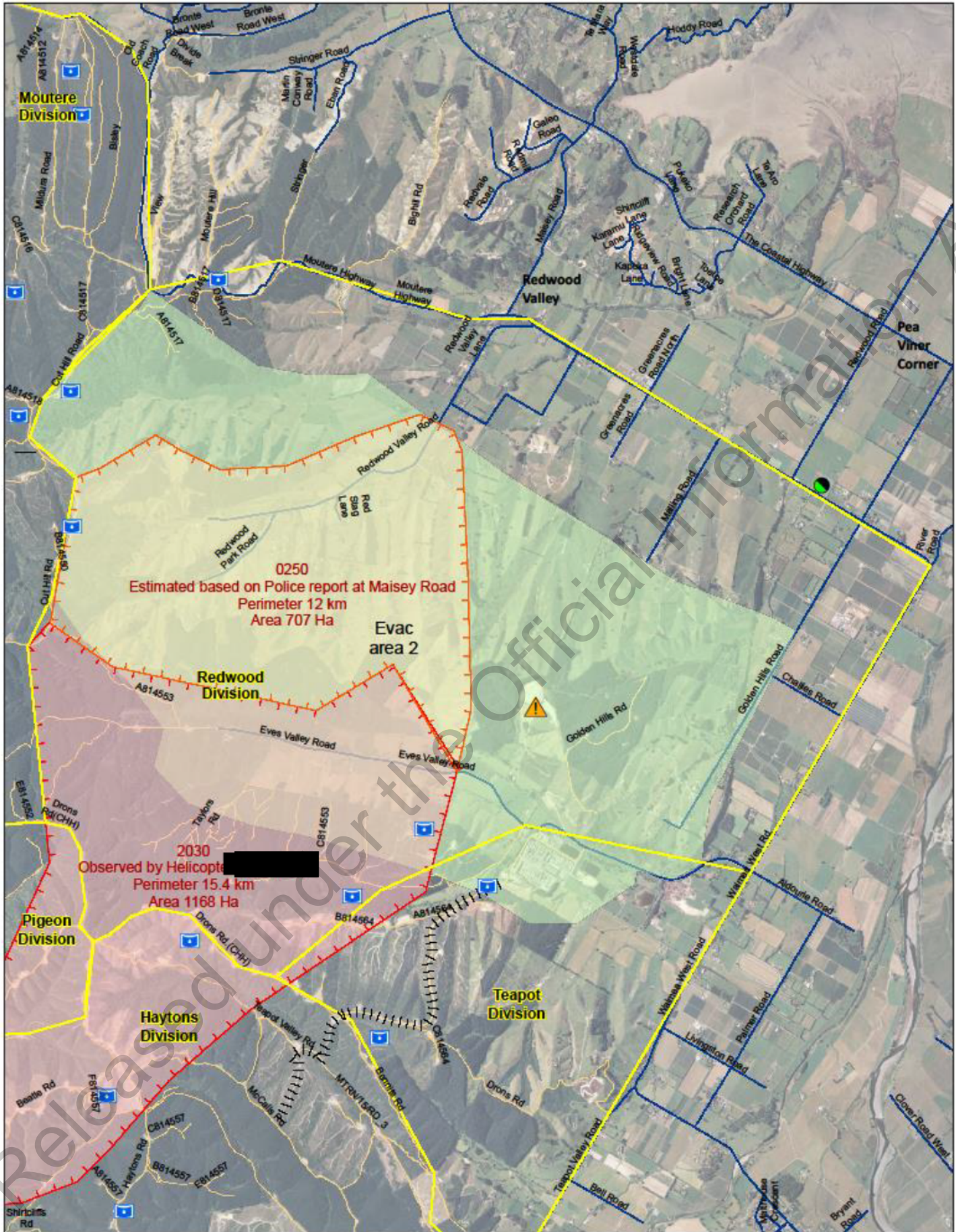
Observed by Helicopter, [redacted]



**NELSON TASMAN  
EMERGENCY MANAGEMENT  
GROUP**

Teapot Division



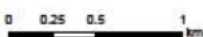


**FOR OFFICIAL USE ONLY.  
NOT FOR PUBLIC DISTRIBUTION.**

Date saved: 6/02/2019, 0346 hrs  
Prepared by: kilmenys

Coordinate System: NZGO 2000 New Zealand Transverse Mercator  
Projection: Transverse Mercator  
Datum: NZGO 2000  
Units: Meter  
Sourced from Land Information New Zealand data.  
Crown copyright reserved.

Scale at A3 1:30,000



**Legend**

- Waterpoints
- EM\_EventLine
- Eves Valley Landfill
- Forward Control Point
- FireSectors
- Pigeon Valley Fire [redacted]
- Estimated based on Police report at Malsey Road
- Observed by Helicopter, [redacted]



Redwood Division



Night

6 Feb → 7 Feb 2019.

1900 → 0700

Finance Copy

IC

- Safety

6/2/19.

Ops Manager

Pigeon Valley

Moutere

Teapot Valley

Redwood

Rabbit Island

Maytons

• Puklowski x 11 (3)

• Tasman VRFF x 8 (8)

• Tasman Tanker 2111 (1) (9)

• AFM x 5 (1)

• Packer x 3 (2)

• Concrete metals

10000L tanker (2) (3)

• Appleby 4x4 2 people (3) (4)

• Buck x 6 (1)

• Mitchell x 6 (2)

• V. Takaka x 7 (4)

• V. Takaka Tanker (3)

• Higgins Tanker 10KL (4)

• Nelson 212 appl. (5)

• Appleby Tanker (5)

• Buck x 7 (2)

• NFM x 12 (5)

• 801 ?

• Marohau Smoke chaser x 4 (1)

• Nelmac x 4 (2)

• Higgins Tanker (6)

• Brightwater x 8 (4) Tanker (7)

2 High volume pumps

2/19

Doger  
Digger 1  
Tanker 7  
and more 1

3) 9+4+6+4+6+2

122  
~ 140



7/2/19

0700 - 1900

# IAP Cover Sheet

## INCIDENT ACTION PLAN

The items checked below are included in the incident Action Plan

- SITUATION REPORT
- INCIDENT OBJECTIVES
- ORGANISATIONAL LIST
- SECTOR ASSIGNMENT
- DIVISIONAL ASSIGNMENT
- AIR OPERATIONS PLAN
- COMMUNICATION PLAN
- SAFETY PLAN
- MEDICAL PLAN
- FIRE MAP
- WEATHER FORECAST AND MAP
- FIRE BEHAVIOUR FORECAST
- FACILITIES LAYOUT PLAN

Approved by Incident Controller:



Signed

Date/Time

7/2/19  
1810



1. Pigeon Valley	2. 7Feb2019 0700 to 1900
------------------	--------------------------

# Situation Report

RF201

1. Incident Name Pigeon Valley	2. Operational Period	SITUATION REPORT RF201
	Date 6 <sup>th</sup> Feb 2019 Time 1330	
3. Location Pigeon Rd, Eves Valley ,Tasman	4. Vegetation Forest/Scrub/Grass/Slash/	5. NZ TM Grid Ref. 41°22'32.51"S 173° 1'31.81"E

## 6. Assessment

A large scrub/ forest fire is currently burning estimated to be 1870ha at 12:30 hrs with a perimeter of 22km.

Values at risk are life and property, assets.

Confirmed minor property damaged. Unconfirmed reports of potential property losses in Eves Valley and Redwood Valley.

The Eves Valley sawmill is at risk and fire crews are carrying out structural protection on structures. Telecommunications site on the end of Cooks Rd (near Wakefield) is at risk with northerly wind.

Evacuations have occurred in the

- Eves Valley,
- Golden Hills Rd,
- Redwood Valley Rd
- Mallings Rd
- Greenacres Rd

We have confirmed records of 170 households evacuated.

Evacuation of North and South Pigeon Valley, Teapot Valley, Eves Valley, Redwood Park, Malling Rd and Golden Hills Rd.

Notice of potential evacuations in place for Sunrise Valley (top end), Deepdale Rd (Upper Moutere).

Crews are working on most areas on the ground safely and are progressing fire containment due to more favourable weather conditions.

Prepared by [REDACTED]	Date:7Feb2019	Time: 1500
------------------------	---------------	------------

**7. Action taken**

14 Helicopters managed fire as requested throughout the day

Firebreaks being located to manage NNE wind change.

More predictable fire behaviour has made the fire ground more accessible for ground crews in particularly on the Northern front. These crews are being tasked with structure protection and controlling the fire when it has spotted onto grassland. Black out work has commenced in this area.

**8. Factors**

On Tuesday strong winds fanned the forest fire and the fire itself was creating its own extreme fire behaviour. Fire behaviour at night was still very active with highly flammable grass and scrubland carrying the fire. Wednesday day brought a change in wind direction pushing the fire back into the burnt stand areas and changing fire fronts along with more benign fire behaviour from lower temperatures and higher RH.

Light winds and higher relative humidity's have prevailed through the day enabling crews to move into direct attack.

**9. Predicted Incident Development**

The prevailing weather is supporting fire fighter activities with an increased in containment of existing fire lines. This will continue based on the forecast until unfavourable weather conditions occur. Significant reduction in the rate of spread due to current weather.

10. Prepared by: [Redacted]  
Authorised by [Redacted] (Incident controller)

Date/Time 16:30 6<sup>th</sup> Feb 2019

Released under the Official Information Act

## Incident Objectives<sup>RF202</sup>

### 3. Overall Incident Objectives

Protect life (Public and Residents, firefighters)

Protect Property

Identify and keep stakeholders informed

Ensure Firefighter Safety

Identify and protect Critical Infrastructure

Transition to NIMT using shadow process by 1500hrs

Protect Other Assets (Forests, crop etc)

Prepare for significant wind/weather change

Containment lines constructed

- Haytons division; Wakefield cell tower retardant line, Firebreak at the base of the hill in the grass paddock
- Teapot Valley; back up the firebreak around the Eve's Valley Sawmill with retardant
- Redwood Valley ; Progress firebreaks during northly winds
- Moutere; Assessing situation and developing a containment plan. Looking to develop a additional firebreak along Eder road and the southern end of Cuthill?

Contain then Extinguish fire

### 4. Objectives for specified Operational Period

Protect life (Public and Residents)

Identify and keep stakeholders informed

Allow for Firefighter Safety

Sectorise each divisional area

Identify and protect Critical Infrastructure

Transition to NIMT by 1500hrs

Establish High volume Water Supplies

Protect property and critical infrastructure be establishing hard containment lines with heavy equipment or Identify opportunities for laying down retardant ahead of wind change to protect property/infrastructure

Establish trigger points with 3hrs lead-time for evacuations

# Organisation List

RF203

3. Incident Control		Cell Phone	Radio Ch
Incident Controller	[REDACTED] (NIMT)		
Ops Strategy advisor	[REDACTED] (NMIT)		
Information Officer	[REDACTED]	[REDACTED]	
Safety Officer	[REDACTED] (NMIT)		
Liaison Officer			
4. Agency Representative		Cell Phone	Radio Ch
Lead Agency	FENZ [REDACTED] PRFO	[REDACTED]	
Agency	Police [REDACTED]	[REDACTED]	
Agency	CDEM [REDACTED] CDEM Duty Phone	[REDACTED]	
Agency	FENZ Urban Liason [REDACTED]	[REDACTED]	
5. Planning/Intell Section		Cell Phone	Radio Ch
Planning/Intell Manager	[REDACTED]	[REDACTED]	
Situations Unit	[REDACTED] (FBAN) [REDACTED] (Day) [REDACTED] (Day) [REDACTED] (GIS) [REDACTED] (GIS) [REDACTED] (Observer) [REDACTED] (Observer) +2	[REDACTED]	
Resources Unit	[REDACTED] (EoC) [REDACTED] (Caravan Check In)	[REDACTED]	
Management Support Unit	[REDACTED]		
Information Unit			
Advance Planning Unit			
Technical Specialists Unit			

6. Logistics Section		Cell Phone	Radio Ch
Logistics Manager	[Redacted] (NMIT)	[Redacted]	
	[Redacted] (Day)		
	[Redacted] (Night)		
Supply Unit	[Redacted]		
Catering Unit	[Redacted]		
Facilities Unit			
Finance Unit			
Communications Unit			
Welfare Unit	[Redacted]		
Medical Unit	[Redacted]		
Ground Support Unit			

7. Operations Section		Cell Phone	Radio Ch
Operations Manager	[Redacted]		Waimea 1
Deputy Operations Manager	[Redacted]		Waimea 1
Ops Planning	[Redacted]		Waimea 1
Division Pigeon Commander	[Redacted]		Fire 1
Division Hayton Commander	[Redacted]		Fire 2
Division Teapot Commander	[Redacted]		Fire 3
Division Redwood Commander	[Redacted]		Fire 1
Division Moutere Commander	[Redacted]		Fire 2
Division Two Commander			
Sector E Supervisor			
Sector F Supervisor			
Sector G Supervisor			
Sector H Supervisor			
Air Division Commander	[Redacted] (NMIT)		
Air Attack Supervisor	[Redacted]	[Redacted]	Fire 4
Air Support Supervisor	[Redacted] ↓ 14 2812	[Redacted]	Fire 4

1. Pigeon Valley	2. 7Feb2019 0700 to 1900
------------------	--------------------------

Public information section	[REDACTED]	(NMIT)		
	[REDACTED]	(NMIT)		
	[REDACTED]	(NMIT)		
	[REDACTED]	(NMIT)		

Released under the Official Information Act

Prepared by [REDACTED]		Date: 7Feb2019	Time: 1500
------------------------	--	----------------	------------

1. Pigeon Valley	2. 7Feb2019 0700 to 1900
------------------	--------------------------

# Sector Assignment

RF204

<b>3. Sector</b>		<b>4. Description</b>		<b>5. Division Assigned</b>	
<b>6. Sector Supervisor</b>		Affiliation	Cellphone	Radio Ch	
<b>7. Resources Assigned this period</b>					
<i>Resource/Crew</i>	<i>Leader</i>	<i># Persons</i>	<i>Transport Required</i>	<i>Drop-off Point/time</i>	<i>Pickup Point/time</i>
<b>8. Sector Assignment / Special Instructions</b>					
<b>9. Sector Communications</b>				<i>Phone</i>	<i>Radio Ch</i>
Division/Division Cmdr					
Air Attack Supervisor					
Safety Officer					

Released under the Official Information Act

Prepared by [REDACTED]	Date: 7Feb2019	Time: 1500
------------------------	----------------	------------



## Division Assignment

RF204a

3. Pigeon - Alpha		4. Point of ignition to Dove Saddle	
6. Sector Commander [REDACTED]	Affiliation Tasman VRRF	Cellphone [REDACTED]	Radio Ch Fire 1
6. Resources Assigned this Period			
<i>Sector</i>	<i>Supervisor</i>	<i>Crews</i>	<i>Radio Ch</i>
1 Taylors D8 jd850	1x HEQB		
1 Taylors Excavator	1xHEQB		
Tasman VRRF 6px			
1 Smoke chaser + 2px Hira			
1 Appliance + 5px Hira			
1 rural tanker 5075			
7. Division Assignment/Special Instructions			
Protect Life and Property			
Keep Residents and Stakeholders informed in preparation for potential north easterly wind change			
Dozer to establish hard containment lines for property/infrastructure protection			
Excavator to Establish high volume water supplies Wai-iti river Baigents Rd first and end of Houl Valley Rd second			
Provide Situation Report to Situations Unit at least every two hours			
*Laydown Retardant to protect properties			
8. Division Communications		<i>Phone</i>	<i>Radio Ch</i>
Operations Manager			
Air Division Commander			

1. Pigeon Valley	2. 7Feb2019 0700 to 1900
------------------	--------------------------

# Division Assignment

RF204a

3. Haytons – Zulu		4. Point of ignition to Teapot Valley Rd end	
6. Sector Commander	Affiliation	Cellphone	Radio Ch
[REDACTED]	DoC Motueka	[REDACTED]	Fire 2
6. Resources Assigned this Period			
<i>Sector</i>	<i>Supervisor</i>	<i>Crews</i>	<i>Radio Ch</i>
TLC Bulldozer D7 + additional dozer	[REDACTED]		
TLC x2 Excavator			
Appleby VRFF 4px Nelson Lakes VRFF 4px			
1x smoke chaser		Lake Rotoiti	
1x appliance		Lake Rotoiti	
2x rural tanker			
7. Division Assignment/Special Instructions			
Protect life and Property			
Keep Residents and Stakeholders informed in preparation for potential north easterly wind change			
1x Excavator establish High Volume Water Points Wai-iti River end of Bird Lane			
1x Bulldozer for Property/Infrastructure Protection and Establish hard containment line along Haytons Rd			
Ground crew begin 5m blackout of flank			
Provide Situation Report to Situations Unit at least every two hours			
*Laydown Retardant to protect properties			
100C Lakes Crew			
8. Division Communications		<i>Phone</i>	<i>Radio Ch</i>
Operations Manager			
Air Division Commander			

Prepared by	[REDACTED]	Date: 7Feb2019	Time: 1500
-------------	------------	----------------	------------

1. Pigeon Valley	2. 7Feb2019 0700 to 1900
------------------	--------------------------

## Division Assignment

RF204a

3. Teapot - Yankie		4. Eves Valley Rd to Golden Hills Rd	
6. Sector Commander	Affiliation	Cellphone	Radio Ch
[REDACTED]	Wakefield VFB/NML	[REDACTED]	Fire 3
6. Resources Assigned this Period			
<i>Sector</i>	<i>Supervisor</i>	<i>Crews</i>	<i>Radio Ch</i>
1 Taylors Bulldozer D8	[REDACTED]		
2x Taylors Excavator	[REDACTED]		
Wakefield 02 VFB 4px Upper Moutere 321, 3211 Ngatimoti VRRF			
4x Urban crew		Upper Moutere	
2x rural tankers	[REDACTED]	[REDACTED]	No PPE
2x Tankers 10000L Concrete& Metals	[REDACTED]	[REDACTED]	No PPE
7. Division Assignment/Special Instructions			
Protect life and Property			
Keep Residents and Stakeholders informed in preparation for potential north easterly wind change			
Establish High Volume Water supply end of Bells rd Wai iti River with Excavator			
1x Bulldozer for Property/Infrastructure Protection first, Establish hard containment line on Eastern Flank/Eder Rd?			
Urban crew for Protection of Eves Valley Mill or other properties as required			
Provide Situation Report to Situations Unit at least every two hours			
*Laydown Retardant to protect properties			
8. Division Communications		<i>Phone</i>	<i>Radio Ch</i>
Operations Manager			
Air Division Commander			

Prepared by [REDACTED]	Date: 7Feb2019	Time: 1500
------------------------	----------------	------------

1. Pigeon Valley	2. 7Feb2019 0700 to 1900
------------------	--------------------------

## Division Assignment

RF204a

3. Redwood - Xray		4. Golden Hills Rd to Cut Hill Rd	
6. Sector Commander [REDACTED]	Affiliation FENZ	Cellphone	Radio Ch Fire 1
6. Resources Assigned this Period			
<i>Sector</i>	<i>Supervisor</i>	<i>Crews</i>	<i>Radio Ch</i>
1 Dozer Burson D65 Komatsu?	[REDACTED]		
1 TLC Excavator	[REDACTED]		
AFM 2px	[REDACTED]		
Wainui VRFF 2px - Smoke Chaser	[REDACTED]		
3 Military Crews			
7. Division Assignment/Special Instructions			
Protect Life and Property			
Keep Residents and Stakeholders informed in preparation for potential north easterly wind change			
Excavator to identify and establish access for high volume water supply in existing ponds			
1x Bulldozer for Property/Infrastructure Protection assisted by ground crew			
Contain fire South of Moutere Highway and West Golden Hills Rd			
Urban crew for protection of Eves Valley Hazardous Landfill			
Provide Situation Report to Situations Unit at least every two hours			
Build containment lines where practical in light fuel areas.			
*Laydown Retardant to protect properties and provide containment			
8. Division Communications		<i>Phone</i>	<i>Radio Ch</i>
Operations Manager			
Air Division Commander			

Prepared by [REDACTED]	Date: 7Feb2019	Time: 1500
------------------------	----------------	------------

# Division Assignment

RF204a

3. Moutere – Bravo		4. Cut Hill Rd to Dove Hill Saddle	
6. Sector Commander	Affiliation	Cellphone	Radio Ch
	Bruce Forestry		Fire 2
6. Resources Assigned this Period			
<i>Sector</i>	<i>Supervisor</i>	<i>Crews</i>	<i>Radio Ch</i>
Taylors Hitachi 20T Excavator (on site)		Taylors	TPFL Ops 2
1 TLC Excavator ?			
1 Taylors Dozer			
1x 3px crew VRRF - Brightwater 2x 4px mid Canterbury?			
West Coast 4px?			
Brightwater 5071 Appliance 5px			
7. Division Assignment/Special Instructions			
Protect Life and Property			
Keep Residents and Stakeholders informed in preparation for potential north easterly wind change			
Excavator to Identify and Establish high volume water access to existing ponds			
1x Bulldozer for Property/Infrastructure Protection, sunrise valley, establish escape routes			
Taylors Excavator to establish escape route/access down Supplejack Valley rd and Sunrise/Heines rd			
Develop Containment lines from Cut Hill to Eder Road where safe to do so. Consider and plan for additional containment lines through Dovedale saddle.			
Provide Situation Report to Situations Unit at least every two hours			
*Laydown Retardant to protect properties			
8. Division Communications		<i>Phone</i>	<i>Radio Ch</i>
Operations Manager			
Air Division Commander			

Prepared by

Date:7Feb2019

Time: 1500

# Air Operations Plan

RF208

3. Personnel and Communications				
Position	Name	Affiliation	Phone	Radio Chan
Air Div Commander				
Air Attack Supervisor				
Air Support Supervisor				
Lead Helicopter Pilot				
Lead Fixed-Wing Pilot				

4. Air Resource Assignments							
Company	Type of Heli	Call Sign	Capacity	Pilot Name	Contact Details		
Garden City Helicopters	B4 Squirrel	IWN	1000L				
Marlborough Helicopters	Long Range	HTA	600L				
Independent Helicopters	Squirrel	IMS <span style="color: red;">IWS</span>	1000L				
Amuri Helicopter	Squirrel	HJM	1000L				
Anderson Helicopters	B2 Squirrel	HKA	1000L				
Christchurch Helicopters	B2 Squirrel	HND	1000L				
<span style="color: red;">Wanaka</span> Christchurch Helicopters	B2 Squirrel	HFF	1000L				
Mount Hutt Helicopters	Squirrel	HMQ	1000L				
Heli Ventures	Squirrel	IER	1000L				
Beck Helicopters	BellUH1B		1500L				
Beck Helicopters	BellUH1E		1500L				
<b>Fixed Wing</b>							
1 TBC 1200hrs	Cresco	<span style="color: red;">OAS</span>					
2 TBC 1200hrs	<span style="color: red;">Airtractor</span>	<span style="color: red;">SKE</span>					
3 TBC 1200hrs							

5. Location of Filling Points/Service Areas	
Name	Grid Reference
Sharp Rd (Divison Pigeon)	41 22 03.7 S 173 00 55.6 E <span style="color: red;">Flight Summaries</span>
Fixed Wings: <span style="background-color: black; color: black;">[REDACTED]</span> airstrip via Teapot Valley	41 22 39.9 S 173 05 04.6 E <span style="color: red;">Southern Helilift HUE Garden City IHL Garden City IGF Garden City IVB Helicharter Nelson HXX Reid Helicopters HPE HEX IOR HJI</span>
6. Safety Notes / Hazards / Radio Coverage Limitations	
<span style="color: red;">Skyworks HZZ</span>	
7. Air Operations Special Equip or Service	
<span style="color: red;">Marlborough Heli</span>	

# Communications Plan

RF205

<b>3. Radio Channels</b>				
<i>Assigned To</i>	<i>Function</i>	<i>Channel</i>	<i>Frequency</i>	<i>System</i>
Command		Waimea 1	152.55000 RX 154.33125 TX	
Division Pigeon (Alpha)	Operational	Fire 1	143.82500	
Division Hayton (Zulu)	Operational	Fire 2	143.78750	
Division Teapot (Yankie)	Operational	Fire 3	140.92500	
Division Redwood (Xray)	Operational	Fire 1	143.82500	
Division Moutere (Bravo)	Operational	Fire 2	143.78750	
Air Ops -Heli	Operational	Fire 4	140.61250	
Air Ops – Fixed Wing	Operational	Fire 10	140.98750	
Emergency		Waimea 1	152.55000 RX 154.33125 TX	
FireCom		FireCom		
<b>4. Telephone</b>				
<i>Assigned To</i>	<i>Landline</i>	<i>Cell phone</i>	<i>Fax</i>	<i>Comments</i>
Emergency		111		
Regional Command Centre (RCC)				
<b>6. Other (e.g. email, Satphone, etc)</b>				
GIS Mapping	planning.intelligence@nelsontasmancdem.govt.nz			
ICP	Reception.nelsontasman@fireemergency.nz			
Command Unit	<a href="mailto:lcu.nelson@fireemergency.nz">lcu.nelson@fireemergency.nz</a>			

# Safety Plan

RF209

## 3. General Safety Points

Everyone is to be signed in and out of the fire ground through the Incident Control Point for both safety check and payment records.

Maintain regular situation reports (containing all relevant information) via line supervisors.

LACES	Fire Orders	Watchouts
<b>L - Lookout(s)</b> <b>A – Awareness</b> – Anchor Point(s) <b>C – Communication(s)</b> <b>E – Escape Route(s)</b> <b>S – Safety Zone(s)</b>	<ol style="list-style-type: none"> <li>conditions and forecasts</li> <li>Know what your fire is doing at all times.</li> <li>Base all actions on current and expected fire behaviour of the fire.</li> <li>Identify escape routes and safety zones and make them known.</li> <li>Post lookouts when there is possible danger.</li> <li>Stay alert. Keep calm, Think clearly, act decisively.</li> <li>Maintain prompt communication with your crew/s, your supervisor and adjoining crews.</li> <li>Give clear instructions and ensure they are understood.</li> <li>Maintain control of your crew/s at all times.</li> <li>Fight fire aggressively having provided for safety first.</li> </ol>	<ol style="list-style-type: none"> <li>Fire size is unknown (no size up).</li> <li>Unfamiliar territory</li> <li>Safety zones and escape routes not identified.</li> <li>Unfamiliar with weather and local factors influencing fire behaviour.</li> <li>No communications link with crew members or supervisor.</li> <li>Instructions and assignments not clear.</li> <li>Weather is getting hotter , drier and relative humidity dropping</li> <li>Wind increases and/or changes direction.</li> <li>Getting frequent spot fires across the line</li> <li>Working uphill or downwind of a fire</li> <li>Working on a steep slope</li> <li>Working in rugged terrain</li> <li>Can't see main fire</li> <li>In unburnt vegetation</li> <li>Walking through hot ashes</li> <li>Working alone</li> <li>Getting tired</li> <li>Working near power lines</li> <li>Working near machinery</li> <li>Working with aircraft</li> <li>Working around trees or spars</li> </ol>

## 4. Specific Safety Points

- Access points into fire controlled. Only those authorized to enter and they must receive a brief and be logged in. Time and access point
- Public access Managed
- Weather fire behaviour monitored for changes and communicated to crews. Risk identified to crews
- All crews to have adequate food, water, PPE to manage fatigue and hydration
- Crews to have identified emergency escape routes and emergency plan in the event of harm. Meeting point identified once evacuated.
- All workers to ensure they are competent for the tasks and risks given.
- Air and ground crews to be isolated from risk areas during operations.
- Potential methane flares (Division Hayton) from Eves Valley Landfill



# Medical Plan

RF206

3. First Aid Station		Phone/Radio	Paramedics			
Name	Location	Channel	available at Station			
Each Crew must have available one First aid Level 1 Certified	Each crew					
Nelson 91 Ambulance	Forward command post	Waimea 1	1 Paramedic and 1 EMT			
4. Transportation		Phone/Radio	Paramedics			
Ambulance Service	Address	Channel	available with Ambulance			
Ambulance St Johns	Richmond station	111	Yes			
	Motueka/Stoke Nelson/					
5. Hospitals		Phone	Travel Time		Burn	Heli
Hospital Name	Address		Road	Air	Unit	Pad
Nelson Public Emergency	Waimea Rd.	035461800	27m	4min	y	y
Hutt Hospital (Burn Unit)		045666999	n/a	40min	Y	y
6. Special Emergency Procedures						
Emergency Helicopter stationed at Nelson Airport "111"						
8. Reviewed by Safety Advisor:						Date/Time

FIRE WEATHER FORECAST

Attention Tasman Fire CD

FIRE WEATHER FORECAST

For Location [redacted] Pigeon Valley near Wakefield

Issued by MetService at 08:55am 06-Feb-2019, and valid for the following 9 hours

Wind: East to northeast 15-20km/h gusting 25-30km/h rising to east to southeast 25km/h gusting 40km/h this afternoon.

Precipitation: Remaining drizzle clearing this morning - Less than 1mm.

Temperature: Rising to 20-21C this afternoon.

Humidity: 65% lowering to 40-50% this afternoon.

Outlook for the next 12 hours :

Mailny fine, some cloud about. Temperatures lowering to 10-12C.

Humidity increasing to 70-80%. Southeast easing to 10-15km/h.

Outlook for next 6 days:

Thursday: Light winds, sunny, dry and max temperature around 21C.

Friday: Light winds, sunny, dry and max temperature around 20C.

Saturday: Light winds, sunny, dry and max temperature around 22C.

Sunday: Northerlies, partly cloudy, a few light showers and max temperature about 22C.

Monday: Northerlies and rain, max temperature arond 21C.

Tuesday: Light winds, sunny and max temperature around 23C.

Fire Indices for Wednesday 6<sup>th</sup> Feb 2019 (8:00am)

FFMC 83 (easy Ignition)

DMC 95.8

DC 451.1

ISI 2.9 (moderately fast rate)

BUI 125.1 (Extreme)

FWI 14.5 (high fire intensity)

Released under the Official Information Act

### FIRE BEHAVIOUR FORECAST

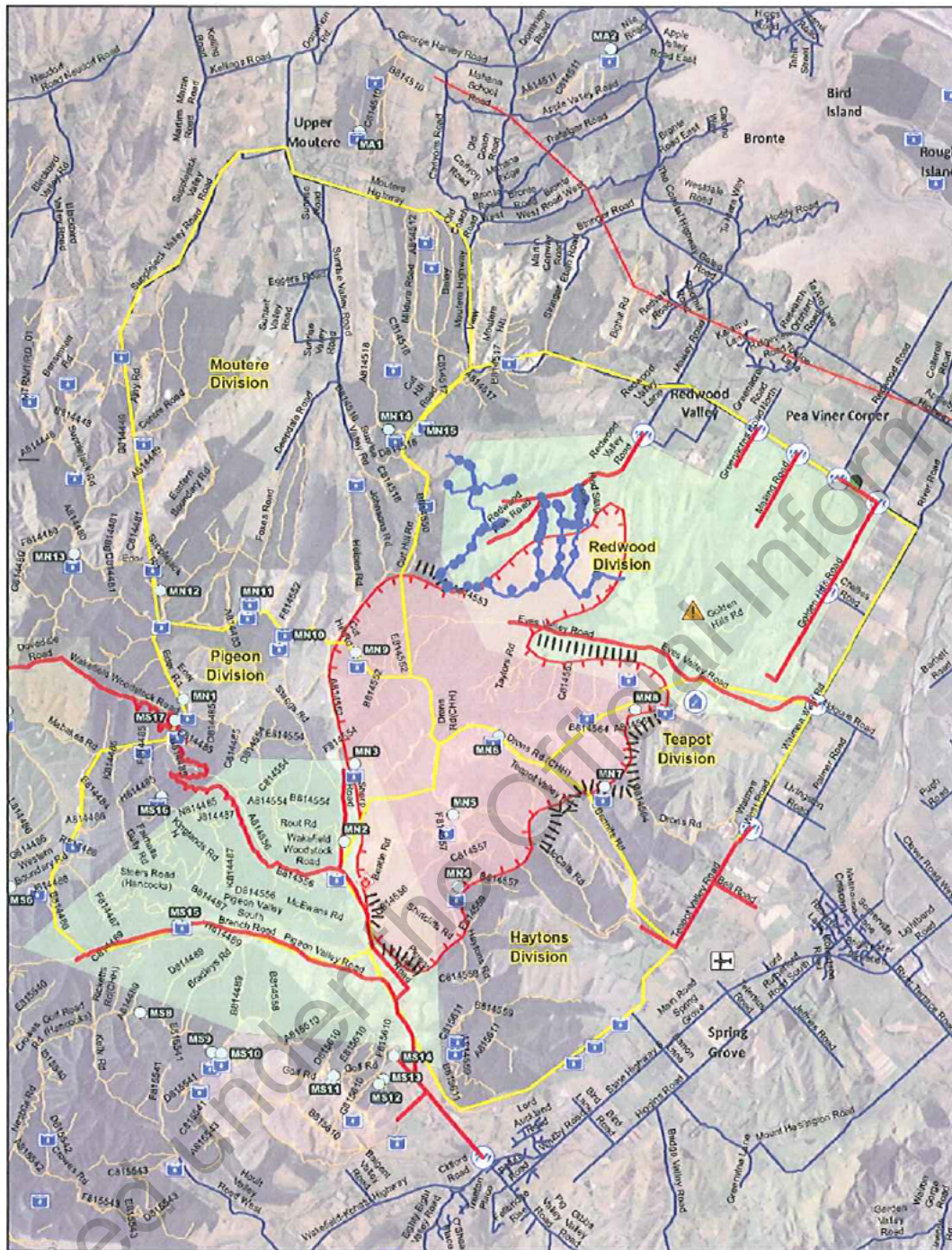
Fire name: Pigeon Road				Prediction for: 0800-1800 07 Feb-19					
Prepared by [REDACTED]				Time and date issued: 1500 06 Feb 19					
Forecast no. 1				Day Shift					
<i>Assumptions:</i>				<i>today's forecast</i>					
Temp	RH	Wind	Slope *	FFMC	DMC	DC	ISI	BUI	FWI
17.1	59.4	10.7	0	86	98.3	463.3	4.2	128.1	19.1

Rates of spread are the equilibrium rate of spread, not the build-up phase, with continuous fuel and similar fuel type.

**Fire Behaviour General:**

<b>Expected fire behaviour – slope 0°</b>	<b>Forecast</b> worst case – 28°C 45%RH slope 20° 1400-1800
<i>Fuel type: Mature Pine – 5m pruned</i>	<i>Fuel type: Mature Pine – 5m pruned</i>
Expect HF rate of spread of 40 m/hr HF Intensity                      633 kw/m Flame lengths                      1.5	Expect HF rate of spread of 200 m/hr HF Intensity                      2100 kw/m Flame lengths                      3 m
<i>Fuel type: Scrub/gorse 2m height</i>	<i>Fuel type: Scrub/ gorse 2m height</i>
Expect HF rate of spread of 926 m/hr HF Intensity                      >10000 kw/m Flame lengths                      6.7 m	Expect HF rate of spread of 3000 m/hr HF Intensity                      >10000 kw/m Flame lengths                      13 m
<i>Fuel type: Grass-70% GC, 100% cover, 0.1m height</i>	<i>Fuel type: Ungrazed Grass -70% GC, 100% cover, 0.2m height</i>
Expect HF rate of spread of 187 m/hr HF Intensity                      296 kw/m Flame lengths                      1.1 m	Expect HF rate of spread of 600 m/hr HF Intensity                      1050 kW/m Flame lengths                      2 m
<b>Safety Considerations:</b>	
Head Fire intensity, and flank fire intensity exceed threshold for direct attack in gorse/ scrub fuels.	Head Fire intensity exceed threshold for direct attack in gorse and mature pine fuels, and flank fires in gorse. Flank fires intensity is now too high for ground crews
. Weather conditions for Thursday are predicted to be similar to Wednesday. The NE conditions should continue to provide higher relative humidities and enable a focus on containment activity. Watch for a fall in RH as the afternoon develops and be prepared to adjust your attack strategy.	

Released under the Official Information Act



**FOR OFFICIAL USE ONLY.  
NOT FOR PUBLIC DISTRIBUTION.**

Date saved: 6/02/2019, 1514 hrs  
Prepared by: petei

Coordinate System: NZGD 2000 New Zealand Transverse Mercator  
Projection: Transverse Mercator  
Datum: NZGD 2000  
Units: Meter  
Sourced from Land Information New Zealand data  
Crown copyright reserved.

Scale at A3: 152,511 0 0.2505 1 km

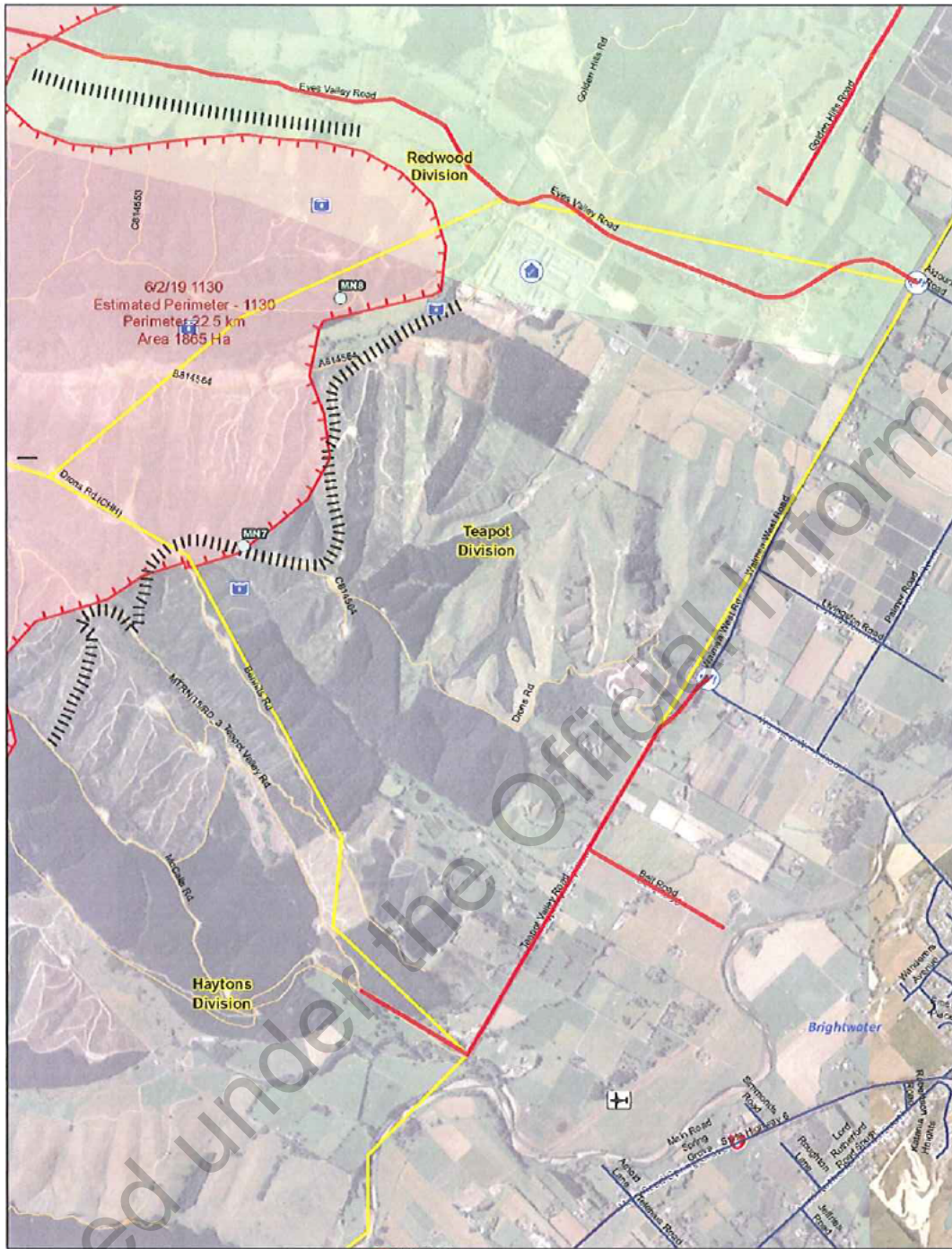


- Eves Valley Sawmill
- Fire Origin
- Forward Control Point
- Road Block
- Fire Sectors
- Pigeon Valley Fire Extent
- Pigeon Valley Fire Extent
- EM\_Eves Area



Pigeon Valley Fire Overview





**FOR OFFICIAL USE ONLY.  
NOT FOR PUBLIC DISTRIBUTION.**

Date saved: 6/02/2019, 1514 hrs  
Prepared by: petei

Coordinate System: NZGD 2000 New Zealand Transverse Mercator  
Projection: Transverse Mercator  
Datum: NZGD 2000  
Units: Meter  
Scale at A3: 1:16,492

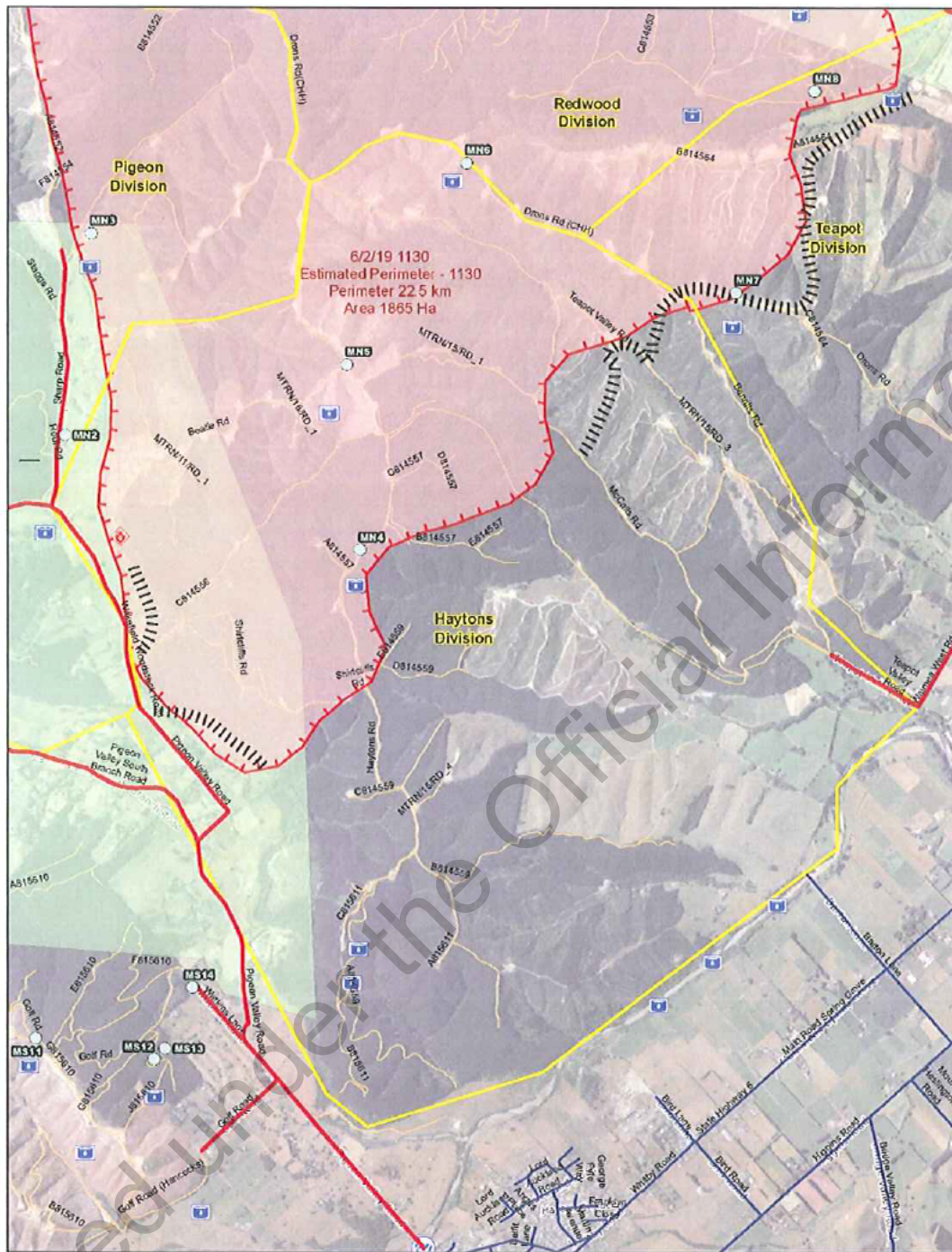


- Description**
- || Planned Dozer Break
  - ⊕ Astrip
  - Ⓜ Eyes Valley Sawmill
  - Ⓜ Road Block
  - ▭ Fire Sectors
  - ▭ Pigeon Valley Fire Extent
  - ▭ Pigeon Valley Fire Extent
  - ▭ EM\_EventArea



Pigeon Valley Fire Overview





**FOR OFFICIAL USE ONLY.  
NOT FOR PUBLIC DISTRIBUTION.**

Date saved: 6/02/2019, 1514 hrs  
Prepared by: petel

Coordinate System: NZGD 2000 New Zealand Transverse Mercator  
Projection: Transverse Mercator  
Datum: NZGD 2000  
Units: Meter  
Sourced from: Land Information New Zealand data  
Crown copyright reserved.

Scale at A3: 1:20,323

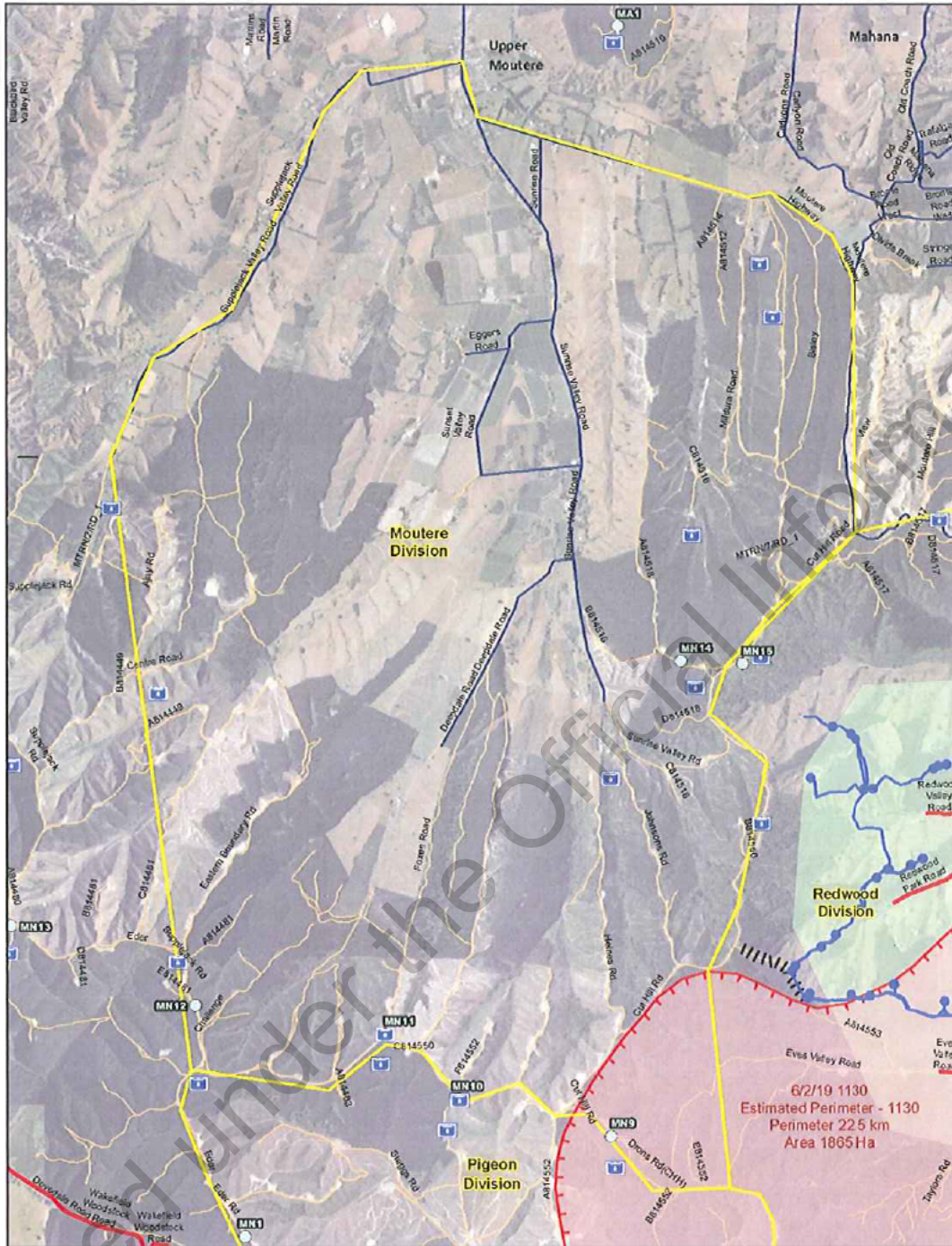


- Description**
- Planned Dozer Break
  - Eves Valley Sawmill
  - Fire Origin
  - Road Block
  - Fire Sectors
  - Pigeon Valley Fire Extent
  - EM\_EvenArea



Pigeon Valley Fire Overview





**FOR OFFICIAL USE ONLY.  
NOT FOR PUBLIC DISTRIBUTION.**  
Date saved: 6/02/2019, 1514 hrs  
Prepared by: petei

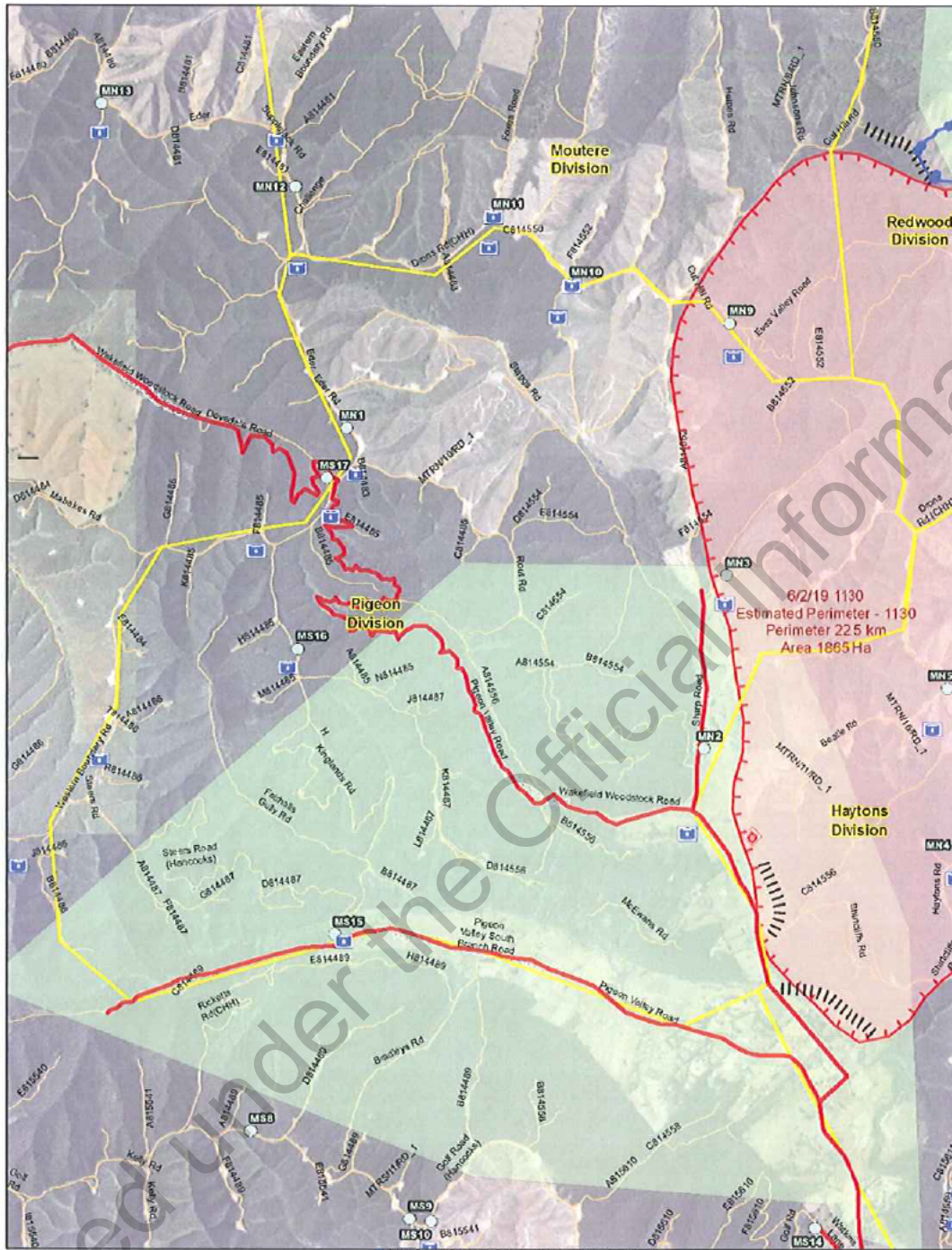
Coordinate System: NZGD 2000 New Zealand Transverse Mercator  
Projection: Transverse Mercator  
Datum: NZGD 2000  
Units: Meter  
Sourced from Land Information New Zealand data  
Crown copyright reserved.  
Scale at A3: 1:24,625

- Water/Surface Features\_RedwoodValleyPropertiesWithoutA
- Waterpoints
- Water Locations\* - Tasman Fire Data
- Water/Fires\_RedwoodValleyPropertiesWithoutWater
- Closed Roads
- Description
- Planned Dozer Break
- Power Line
- Fire Sectors
- Pigeon Valley Fire Extent
- Pigeon Valley Fire Extent
- EM\_EverWres



Pigeon Valley Fire Overview





**FOR OFFICIAL USE ONLY.  
NOT FOR PUBLIC DISTRIBUTION.**

Date saved: 6/02/2019, 1514 hrs  
Prepared by: petel

Coordinates System: NZGD 2000 New Zealand Transverse Mercator  
Projection: Transverse Mercator  
Datum: NZGD 2000  
Units: Meter  
Sourced from Land Information New Zealand data  
Copyright reserved.

Scale at A3: 1:23,459

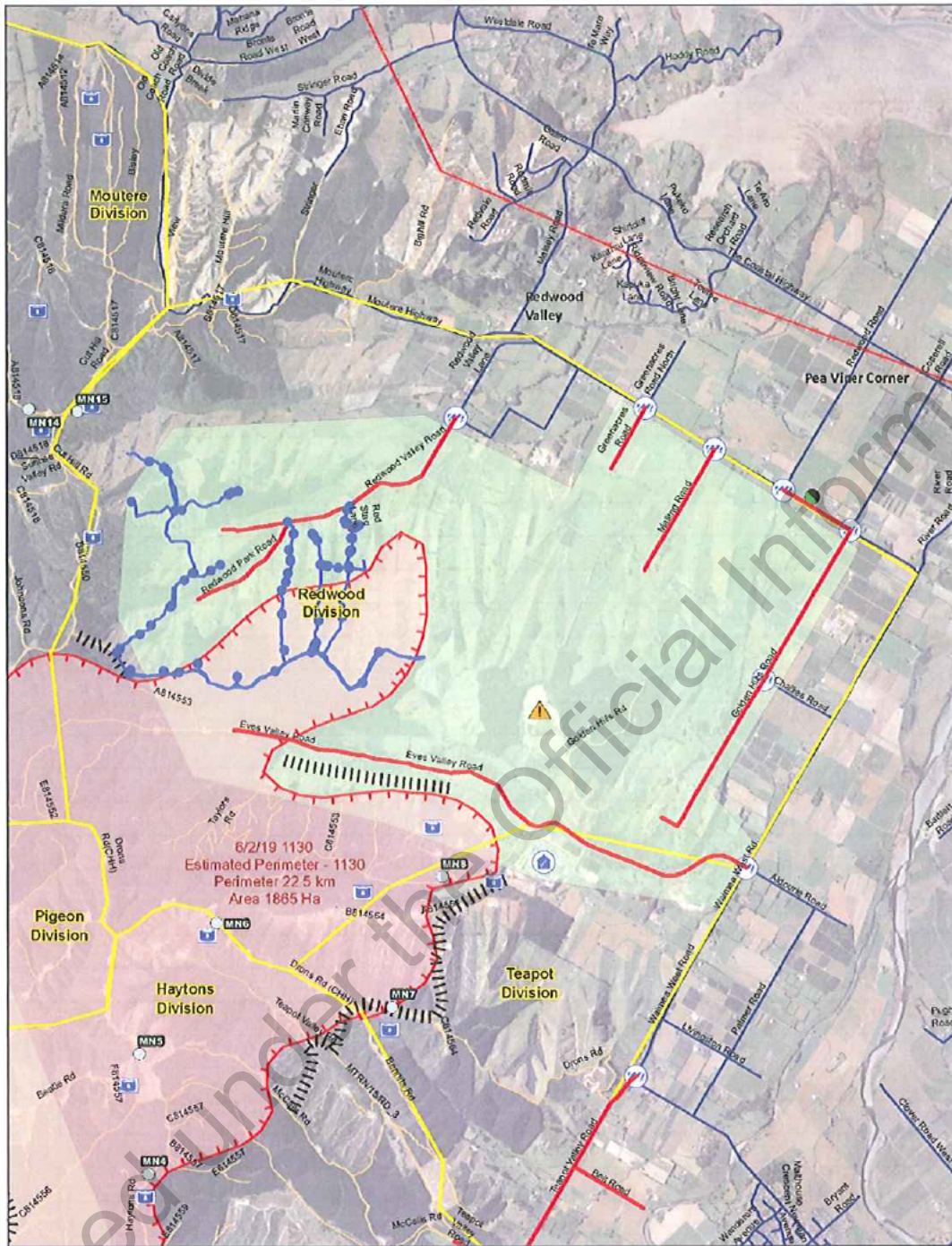


- Water points
- Water Locations - Tasman Fire Data
- Water Pipes - Redwood Valley Properties without Water
- Closed Roads
- Description
- Planned Dozer Break
- Fire Origin
- Fire Sectors
- Pigeon Valley Fire Extent
- EM\_Ever Area



Pigeon Valley Fire Overview





**FOR OFFICIAL USE ONLY.  
NOT FOR PUBLIC DISTRIBUTION.**

Date saved: 6/02/2019, 1514 hrs  
Prepared by: petel

Coordinate System: NZGD 2000 New Zealand Transverse Mercator  
Projection: Transverse Mercator  
Datum: NZGD 2000  
Units: Meter  
Sourced from Land Information New Zealand data  
Copyright reserved

Scale at A3: 1:31,356



- Eves Valley Landfill
- Eves Valley Stn Mill
- Forward Control Point
- Road Block
- Fire Sections
- Pigeon Valley Fire Extent
- Pigeon Valley Fire Extent
- EM\_Eves Area



Pigeon Valley Fire Overview



# IAP Cover Sheet

## INCIDENT ACTION PLAN

The items checked below are included in the incident Action Plan

- SITUATION REPORT
- INCIDENT OBJECTIVES
- ORGANISATIONAL LIST
- SECTOR ASSIGNMENT
- DIVISIONAL ASSIGNMENT
- AIR OPERATIONS PLAN
- COMMUNICATION PLAN
- SAFETY PLAN
- MEDICAL PLAN
- FIRE MAP
- WEATHER FORECAST AND MAP
- FIRE BEHAVIOUR FORECAST
- FACILITIES LAYOUT PLAN

Approved by Incident Controller:	Signed	Date/Time



1. Pigeon Valley	2. 6 Feb2019 0700 to 1900
------------------	---------------------------

# Situation Report

RF201

<b>1. Incident Name</b> Pigeon Valley	<b>2. Operational Period</b> Date 6 <sup>th</sup> Feb 20 Time 16:30	<b>SITUATION REPORT</b> RF201
<b>3. Location</b> Pigeon Rd, Eves Valley ,Tasman	<b>4. Vegetation</b> Forest/Scrub/Grass/Slash/	
<b>6. Assessment</b>  A large scrub/ forest fire is currently burning estimated to be 1900ha at 12:30 hrs with a perimeter of 22km.  Values at risk are life and property, assets.  Confirmed minor property damaged. Unconfirmed reports of potential property losses in Eves Valley and Redwood Valley.  The Eves Valley sawmill is at risk and fire crews are carrying out structural protection on structures. Telecommunications site on the end of Cooks Rd (near Wakefield) is at risk with northerly wind.  Evacuations have occurred in the <ul style="list-style-type: none"> <li>• Eves Valley,</li> <li>• Golden Hills Rd,</li> <li>• Redwood Valley Rd</li> <li>• Mallings Rd</li> <li>• Greenacres Rd</li> </ul> We have confirmed records of 170 households evacuated. Evacuation of North and South Pigeon Valley, Teapot Valley, Eves Valley, Redwood Park, Malling Rd and Golden Hills Rd.  Notice of potential evacuations in place for Sunrise Valley (top end), Deepdale Rd (Upper Moutere).  Crews are working on most areas on the ground safely and are progressing fire containment due to more favourable weather conditions.		

Prepared by: [REDACTED]	Date:6 Feb2019	Time: 1500
-------------------------	----------------	------------

1. Pigeon Valley	2. 6 Feb2019 0700 to 1900
------------------	---------------------------

**7. Action taken**

14 Helicopters managed fire as requested throughout the day

Firebreaks being located to manage NNE wind change.

More predictable fire behaviour has made the fire ground more accessible for ground crews in particularly on the Northern front. These crews are being tasked with structure protection and controlling the fire when it has spotted onto grassland. Black out work has commenced in this area.

**8. Factors**

On Tuesday strong winds fanned the forest fire and the fire itself was creating its own extreme fire behaviour. Fire behaviour at night was still very active with highly flammable grass and scrubland carrying the fire. Wednesday morning brought a change in wind direction pushing the fire back into the burnt stand areas and changing fire fronts along with more benign fire behaviour from lower temperatures and higher RH.

Light winds and higher relative humidity have prevailed through the day enabling crews to move into direct attack.

**9. Predicted Incident Development**

The prevailing weather is supporting fire fighter activities with an increased in containment of existing fire lines. This will continue based on the forecast until unfavourable weather conditions occur. Significant reduction in the rate of spread due to current weather.

<b>10. Prepared by:</b> [REDACTED] <b>Authorised by</b> [REDACTED] (Incident controller)	<b>Date/Time</b> 16:30 6 <sup>th</sup> Feb 2019
---	---

# Incident Objectives<sub>RF202</sub>

### 3. Overall Incident Objectives

- Protect life (Public and Residents, firefighters)
- Protect Property
- Identify and keep stakeholders informed
- Ensure Firefighter Safety
- Identify and protect Critical Infrastructure
- Transition to NIMT using shadow process by 1500hrs
- Protect Other Assets (Forests, crop etc)
- Prepare for significant wind/weather change
- Containment lines constructed
  - All divisions maintain existing containment lines
  - Maintain patrols within divisional areas
  - Any flares ups as they occur.
- Contain then Extinguish fire

### 4. Objectives for specified Operational Period

- Protect life (Public and Residents)
- Identify and keep stakeholders informed
- Allow for Firefighter Safety
- Sectorise each divisional area
- Identify and protect Critical Infrastructure
- Protect property and critical infrastructure by establishing hard containment lines with heavy equipment or Identify opportunities for laying down retardant ahead of wind change to protect property/infrastructure
- Establish trigger points with 3hrs lead-time for evacuations



# Organisation List

RF203

3. Incident Control		Cell Phone	Radio Ch
Incident Controller	██████████ (Day)	██████████	
Deputy IC	██████████ (Night)		
Information Officer			
Safety Officer			
Liaison Officer			
4. Agency Representative		Cell Phone	Radio Ch
Lead Agency	CDEM	██████████	
Agency	Police ██████████ ██████████		
Agency	CDEM ██████████ CDEM Duty Phone		
Agency	FENZ Urban Liason ██████████ ██████████		
5. Planning/Intell Section		Cell Phone	Radio Ch
Planning/Intell Manager	██████████	██████████	
Situations Unit			
Resources Unit	██████████		
Management Support Unit			
Information Unit			
Advance Planning Unit			
Technical Specialists Unit	██████████		
6. Logistics Section		Cell Phone	Radio Ch
Logistics Manager	██████████		
Supply Unit			
Catering Unit			
Facilities Unit			
Finance Unit			

Communications Unit			
Welfare Unit	██████████ ██████████	██████████	
Medical Unit			
Ground Support Unit			

<b>7. Operations Section</b>	<b>Cell Phone</b>	<b>Radio Ch</b>
Operations Manager	██████████	
Deputy Operations Manager		
Division Pigeon Commander	██████████	
Division Hayton Commander		
Division Teapot Commander		
Division Redwood Commander		
Division Moutere Commander		
Division Two Commander		
Sector E Supervisor		
Sector F Supervisor		
Sector G Supervisor		
Sector H Supervisor		
Air Division Commander		
Air Attack Supervisor		
Air Support Supervisor		

1. Pigeon Valley	2. 6 Feb2019 0700 to 1900
------------------	---------------------------

# Sector Assignment

RF204

<b>3. Sector</b>		<b>4. Description</b>		<b>5. Division Assigned</b>	
<b>6. Sector Supervisor</b>		Affiliation	Cellphone	Radio Ch	
<b>7. Resources Assigned this period</b>					
<i>Resource/Crew</i>	<i>Leader</i>	<i># Persons</i>	<i>Transport Required</i>	<i>Drop-off Point/time</i>	<i>Pickup Point/time</i>
<b>8. Sector Assignment / Special Instructions</b>					
<b>9. Sector Communications</b>					
Division/Division Cmdr			<i>Phone</i>	<i>Radio Ch</i>	
Air Attack Supervisor					
Safety Officer					

Prepared by: [REDACTED]	Date: 6 Feb2019	Time: 1500
-------------------------	-----------------	------------

1. Pigeon Valley	2. 6 Feb2019 0700 to 1900
------------------	---------------------------

# Division Assignment

RF204a

<b>3. Pigeon</b>		<b>4. Point of ignition to Dove Saddle</b>		
<b>6. Sector Commander</b>	Affiliation	Cellphone	Radio Ch	
<b>6. Resources Assigned this Period</b>				
<i>Sector</i>	<i>Supervisor</i>	<i>Crews</i>	<i>Radio Ch</i>	
1 Ground Crew				
1 Smoke chaser				
1 Appliance				
<b>7. Division Assignment/Special Instructions</b> <b>Protect Life and Property</b> <b>Keep Residents and Stakeholders informed in preparation for potential north easterly wind change</b> <b>Provide Situation Report to Situations Unit at least every two hours</b> <b>*Laydown Retardant to protect properties</b>				
<b>8. Division Communications</b>		<i>Phone</i>	<i>Radio Ch</i>	
Operations Manager _____				
Air Division Commander _____				

Prepared by: ██████████	Date: 6 Feb2019	Time: 1500
-------------------------	-----------------	------------

1. Pigeon Valley	2. 6 Feb2019 0700 to 1900
------------------	---------------------------

# Division Assignment

RF204a

<b>3. Haytons</b>		<b>4. Point of ignition to Teapot Valley Rd end</b>		
<b>6. Sector Commander</b>	Affiliation	Cellphone	Radio Ch	
<b>6. Resources Assigned this Period</b>				
<i>Sector</i>	<i>Supervisor</i>	<i>Crews</i>	<i>Radio Ch</i>	
1 Ground Crew				
1 Smoke chaser				
1 Appliance				
<b>7. Division Assignment/Special Instructions</b> <b>Protect life and Property</b> <b>Keep Residents and Stakeholders informed in preparation for potential north easterly wind change</b> <b>Provide Situation Report to Situations Unit at least every two hours</b> <b>*Laydown Retardant to protect properties</b>  <b>100C Lakes Crew</b>				
<b>8. Division Communications</b>		<i>Phone</i>	<i>Radio Ch</i>	
Operations Manager _____				
Air Division Commander _____				

Prepared by: ██████████	Date: 6 Feb2019	Time: 1500
-------------------------	-----------------	------------

1. Pigeon Valley	2. 6 Feb2019 0700 to 1900
------------------	---------------------------

# Division Assignment

RF204a

<b>3. Teapot</b>		<b>4. Eves Valley Rd to Golden Hills Rd</b>		
<b>6. Sector Commander</b>	Affiliation	Cellphone	Radio Ch	
<b>6. Resources Assigned this Period</b>				
<i>Sector</i>	<i>Supervisor</i>	<i>Crews</i>	<i>Radio Ch</i>	
1 Ground Crew				
1 Smoke chaser				
1 Appliance				
<b>7. Division Assignment/Special Instructions</b>				
Protect life and Property				
Keep Residents and Stakeholders informed in preparation for potential north easterly wind change				
Urban crew for Protection of Eves Valley Mill or other properties as required				
Provide Situation Report to Situations Unit at least every two hours				
*Laydown Retardant to protect properties				
<b>8. Division Communications</b>				
Operations Manager	<i>Phone</i>	<i>Radio Ch</i>		
Air Division Commander				

Prepared by: <span style="background-color: black; color: black;">██████████</span>	Date: 6 Feb2019	Time: 1500
---	-----------------	------------

1. Pigeon Valley	2. 6 Feb2019 0700 to 1900
------------------	---------------------------

# Division Assignment

RF204a

<b>3. Redwood</b>		<b>4. Golden Hills Rd to Cut Hill Rd</b>		
<b>6. Sector Commander</b>	Affiliation	Cellphone	Radio Ch	
<b>6. Resources Assigned this Period</b>				
<i>Sector</i>	<i>Supervisor</i>	<i>Crews</i>	<i>Radio Ch</i>	
2 Ground Crew				
2 Smoke chaser				
1 Appliance				
-				
<b>7. Division Assignment/Special Instructions</b>				
Protect Life and Property				
Keep Residents and Stakeholders informed in preparation for potential north easterly wind change				
Property/Infrastructure Protection by ground crew				
Contain fire South of Moutere Highway and West Golden Hills Rd				
Urban crew for protection of Eves Valley Hazardous Landfill				
Provide Situation Report to Situations Unit at least every two hours				
Build containment lines where practical in light fuel areas.				
*Laydown Retardant to protect properties and provide containment				
<b>8. Division Communications</b>				
Operations Manager		<i>Phone</i>	<i>Radio Ch</i>	
Air Division Commander				

Prepared by: <span style="background-color: black; color: black;">██████████</span>	Date: 6 Feb2019	Time: 1500
---	-----------------	------------

1. Pigeon Valley	2. 6 Feb2019 0700 to 1900
------------------	---------------------------

# Division Assignment

RF204a

<b>3. Moutere</b>		<b>4. Cut Hill Rd to Dove Hill Saddle</b>	
<b>6. Sector Commander</b> ██████████	Affiliation Bruce Forestry	Cellphone ██████████	Radio Ch Fire 2
<b>6. Resources Assigned this Period</b>			
<i>Sector</i>	<i>Supervisor</i>	<i>Crews</i>	<i>Radio Ch</i>
1 Ground Crew			
1 Smoke chaser			
1 Appliance			
<b>7. Division Assignment/Special Instructions</b> <b>Protect Life and Property</b> <b>Keep Residents and Stakeholders informed in preparation for potential north easterly wind change</b> <b>Excavator to Identify and Establish high volume water access to existing ponds</b> <b>1x Bulldozer for Property/Infrastructure Protection, sunrise valley, establish escape routes</b> <b>Taylor's Excavator to establish escape route/access down Supplejack Valley rd and Sunrise/Heines rd</b> <b>Develop Containment lines from Cut Hill to Eder Road where safe to do so. Consider and plan for additional containment lines through Dovedale saddle.</b> <b>Provide Situation Report to Situations Unit at least every two hours</b> <b>*Laydown Retardant to protect properties</b>			
<b>8. Division Communications</b>		<i>Phone</i>	<i>Radio Ch</i>
Operations Manager			
Air Division Commander			

Prepared by: ██████████	Date: 6 Feb2019	Time: 1500
-------------------------	-----------------	------------



# Communications Plan

RF205

<b>3. Radio Channels</b>				
<i>Assigned To</i>	<i>Function</i>	<i>Channel</i>	<i>Frequency</i>	<i>System</i>
Command		Waimea 1	152.55000 RX 154.33125 TX	
Division Pigeon	Operational	Fire 1	143.82500	
Division Hayton	Operational	Fire 2	143.78750	
Division Teapot	Operational	Fire 3	140.92500	
Division Redwood	Operational	Fire 1	143.82500	
Division Moutere	Operational	Fire 2	143.78750	
Air Ops -Heli	Operational	Fire 4	140.61250	
Air Ops – Fixed Wing	Operational	Fire 10	140.98750	
Emergency		Waimea 1	152.55000 RX 154.33125 TX	
FireCom		FireCom		
<b>4. Telephone</b>				
<i>Assigned To</i>	<i>Landline</i>	<i>Cell phone</i>	<i>Fax</i>	<i>Comments</i>
Emergency		111		
Regional Command Centre (RCC)				
<b>6. Other (e.g. email, Satphone, etc)</b>				
GIS Mapping	planning.intelligence@nelsontasmancdem.govt.nz			
ICP	Reception.nelsontasman@fireemergency.nz			
Command Unit	<a href="mailto:lcu.nelson@fireemergency.nz">lcu.nelson@fireemergency.nz</a>			

# Safety Plan

RF209

### 3. General Safety Points

Everyone is to be signed in and out of the fire ground through the Incident Control Point for both safety check and payment records.

Maintain regular situation reports (containing all relevant information) via line supervisors.

LACES	Fire Orders	Watchouts
<p><b>L</b> - Lookout(s)</p> <p><b>A</b> – Awareness</p> <p>    – Anchor Point(s)</p> <p><b>C</b> – Communication(s)</p> <p><b>E</b> – Escape Route(s)</p> <p><b>S</b> – Safety Zone(s)</p>	<ol style="list-style-type: none"> <li>1. conditions and forecasts</li> <li>2. Know what your fire is doing at all times.</li> <li>3. Base all actions on current and expected fire behaviour of the fire.</li> <li>4. Identify escape routes and safety zones and make them known.</li> <li>5. <b>Post</b> lookouts when there is possible danger.</li> <li>6. <b>Stay</b> alert. Keep calm, Think clearly, act decisively.</li> <li>7. Maintain prompt communication with your crew/s, your supervisor and adjoining crews.</li> <li>8. Give clear instructions and ensure they are understood.</li> <li>9. Maintain control of your crew/s at all times.</li> <li>10. Fight fire aggressively having provided for safety first.</li> </ol>	<ol style="list-style-type: none"> <li>1. Fire size is unknown (no size up).</li> <li>2. Unfamiliar territory</li> <li>3. Safety zones and escape routes not identified.</li> <li>4. Unfamiliar with weather and local factors influencing fire behaviour.</li> <li>5. No communications link with crew members or supervisor.</li> <li>6. Instructions and assignments not clear.</li> <li>7. Weather is getting hotter , drier and relative humidity dropping</li> <li>8. Wind increases and/or changes direction.</li> <li>9. Getting frequent spot fires across the line</li> <li>10. Working uphill or downwind of a fire</li> <li>11. Working on a steep slope</li> <li>12. Working in rugged terrain</li> <li>13. Can't see main fire</li> <li>14. In unburnt vegetation</li> <li>15. Walking through hot ashes</li> <li>16. Working alone</li> <li>17. Getting tired</li> <li>18. Working near power lines</li> <li>19. Working near machinery</li> <li>20. Working with aircraft</li> <li>21. Working around trees or spars</li> </ol>

### 4. Specific Safety Points

- **Access points into fire controlled. Only those authorized to enter and they must receive a brief and be logged in. Time and access point**
- **Public access Managed**
- **Weather fire behaviour monitored for changes and communicated to crews. Risk identified to crews**
- **All crews to have adequate food, water, PPE to manage fatigue and hydration**
- **Crews to have identified emergency escape routes and emergency plan in the event of harm. Meeting point identified once evacuated.**
- **All workers to ensure they are competent for the tasks and risks given.**
- **Air and ground crews to be isolated from risk areas during operations.**
- **Potential methane flares (Division Hayton) from Eves Valley Landfill**

1. Pigeon Valley	2. 6 Feb2019 0700 to 1900
------------------	---------------------------

# Medical Plan

RF206

3. First Aid Station		Phone/Radio Channel	Paramedics available at Station				
Name	Location						
Each Crew must have available one First aid Level 1 Certified	Each crew						
Nelson 91 Ambulance	Forward command post	Waimea 1	1 Paramedic and 1 EMT				
4. Transportation Ambulance Service		Address	Phone/Radio Channel	Paramedics available with Ambulance			
Ambulance St Johns	Richmond station	111	Yes				
	Motueka/Stoke Nelson/						
5. Hospitals		Address	Phone	Travel Time		Burn Unit	Heli Pad
Hospital Name				Road	Air		
Nelson Public Emergency	Waimea Rd.	035461800	27m	4min	y	y	
Hutt Hospital (Burn Unit)		045666999	n/a	40min	Y	y	
6. Special Emergency Procedures							
Emergency Helicopter stationed at Nelson Airport "111"							
8. Reviewed by Safety Advisor:						Date/Time	

Prepared by: [REDACTED]	Date: 6 Feb2019	Time: 1500
-------------------------	-----------------	------------

1. Pigeon Valley	2. 6 Feb2019 0700 to 1900
------------------	---------------------------

FIRE WEATHER FORECAST

Attention Tasman Fire CD

FIRE WEATHER FORECAST

For Location [REDACTED] Pigeon Valley near Wakefield

Issued by MetService at 08:55am 06-Feb-2019, and valid for the following 9 hours

Wind: East to northeast 15-20km/h gusting 25-30km/h rising to east to southeast 25km/h gusting 40km/h this afternoon.

Precipitation: Remaining drizzle clearing this morning - Less than 1mm.

Temperature: Rising to 20-21C this afternoon.

Humidity: 65% lowering to 40-50% this afternoon.

Outlook for the next 12 hours :

Mailny fine, some cloud about. Temperatures lowering to 10-12C.

Humidity increasing to 70-80%. Southeast easing to 10-15km/h.

**Outlook for next 6 days:**

Thursday: Light winds, sunny, dry and max temperature around 21C.

Friday: Light winds, sunny, dry and max temperature around 20C.

Saturday: Light winds, sunny, dry and max temperature around 22C.

Sunday: Northerlies, partly cloudy, a few light showers and max temperature about 22C.

Monday: Northerlies and rain, max temperature arond 21C.

Tuesday: Light winds, sunny and max temperature around 23C.

Fire Indices for Wednesday 6<sup>th</sup> Feb 2019 (8:00am)

FFMC 83 (easy Ignition)

DMC 95.8

DC 451.1

ISI 2.9 (moderately fast rate)

BUI 125.1 (Extreme)

FWI 14.5 (high fire intensity)

Prepared by: [REDACTED]	Date:6 Feb2019	Time: 1500
-------------------------	----------------	------------

1. Pigeon Valley	2. 6 Feb2019 0700 to 1900
------------------	---------------------------

### FIRE BEHAVIOUR FORECAST

<b>Fire name: Pigeon Road</b>				<b>Prediction for: 0800-1800 07 Feb-19</b>					
<b>Prepared by:</b> ██████████				<b>Time and date issued:</b> 1500 06 Feb 19					
<b>Forecast no. 1</b>				Day Shift					
<i>Assumptions:</i>				<i>today's forecast</i>					
<b>Temp</b>	<b>RH</b>	<b>Wind</b>	<b>Slope *</b>	<b>FFMC</b>	<b>DMC</b>	<b>DC</b>	<b>ISI</b>	<b>BUI</b>	<b>FWI</b>
17.1	59.4	10.7	0	86	98.3	463.3	4.2	128.1	19.1

Rates of spread are the equilibrium rate of spread, not the build-up phase, with continuous fuel and similar fuel type.

**Fire Behaviour General:**

<b>Expected fire behaviour</b> – slope 0°	<b>Forecast</b> worst case – 28°C 45%RH slope 20° 1400-1800
<i>Fuel type: Mature Pine – 5m pruned</i>	<i>Fuel type: Mature Pine – 5m pruned</i>
Expect HF rate of spread of 40 m/hr HF Intensity 633 kw/m Flame lengths 1.5	Expect HF rate of spread of 200 m/hr HF Intensity 2100 kw/m Flame lengths 3 m
<i>Fuel type: Scrub/gorse 2m height</i>	<i>Fuel type: Scrub/ gorse 2m height</i>
Expect HF rate of spread of 926 m/hr HF Intensity >10000 kw/m Flame lengths 6.7 m	Expect HF rate of spread of 3000 m/hr HF Intensity >10000 kw/m Flame lengths 13 m
<i>Fuel type: Grass-70% GC, 100% cover, 0.1m height</i>	<i>Fuel type: Ungrazed Grass -70% GC, 100% cover, 0.2m height</i>
Expect HF rate of spread of 187 m/hr HF Intensity 296 kw/m Flame lengths 1.1 m	Expect HF rate of spread of 600 m/hr HF Intensity 1050 kW/m Flame lengths 2 m
<b>Safety Considerations:</b>	
Head Fire intensity, and flank fire intensity exceed threshold for direct attack in gorse/ scrub fuels.	Head Fire intensity exceed threshold for direct attack in gorse and mature pine fuels, and flank fires in gorse. Flank fires intensity is now too high for ground crews
. Weather conditions for Thursday are predicted to be similar to Wednesday. The NE conditions should continue to provide higher relative humidities and enable a focus on containment activity. Watch for a fall in RH as the afternoon develops and be prepared to adjust your attack strategy.	

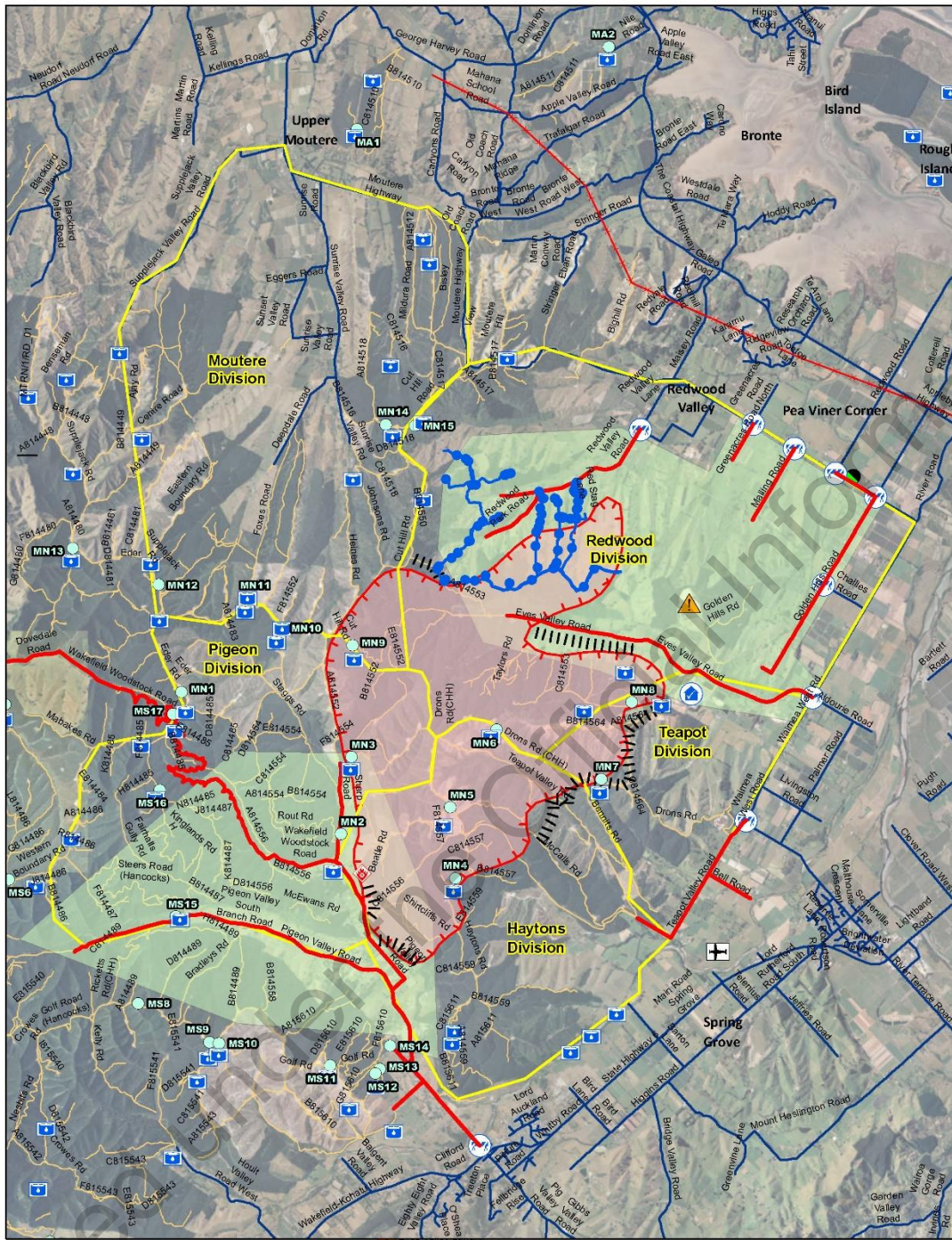
<b>Prepared by:</b> ██████████	<b>Date:</b> 6 Feb2019	<b>Time:</b> 1500
--------------------------------	------------------------	-------------------



1. Pigeon Valley	2. 6 Feb2019 0700 to 1900
------------------	---------------------------

Released under the Official Information Act

Prepared by: [REDACTED]	Date:6 Feb2019	Time: 1500
-------------------------	----------------	------------



**FOR OFFICIAL USE ONLY.  
NOT FOR PUBLIC DISTRIBUTION.**

Date saved: 6/02/2019, 1514 hrs  
Prepared by: petei

Coordinate System: NZGD 2000 New Zealand Transverse Mercator  
Projection: Transverse Mercator  
Datum: NZGD 2000  
Units: Meter  
Sourced from Land Information New Zealand data.  
Crown copyright reserved.

Scale at A3 1:52,511

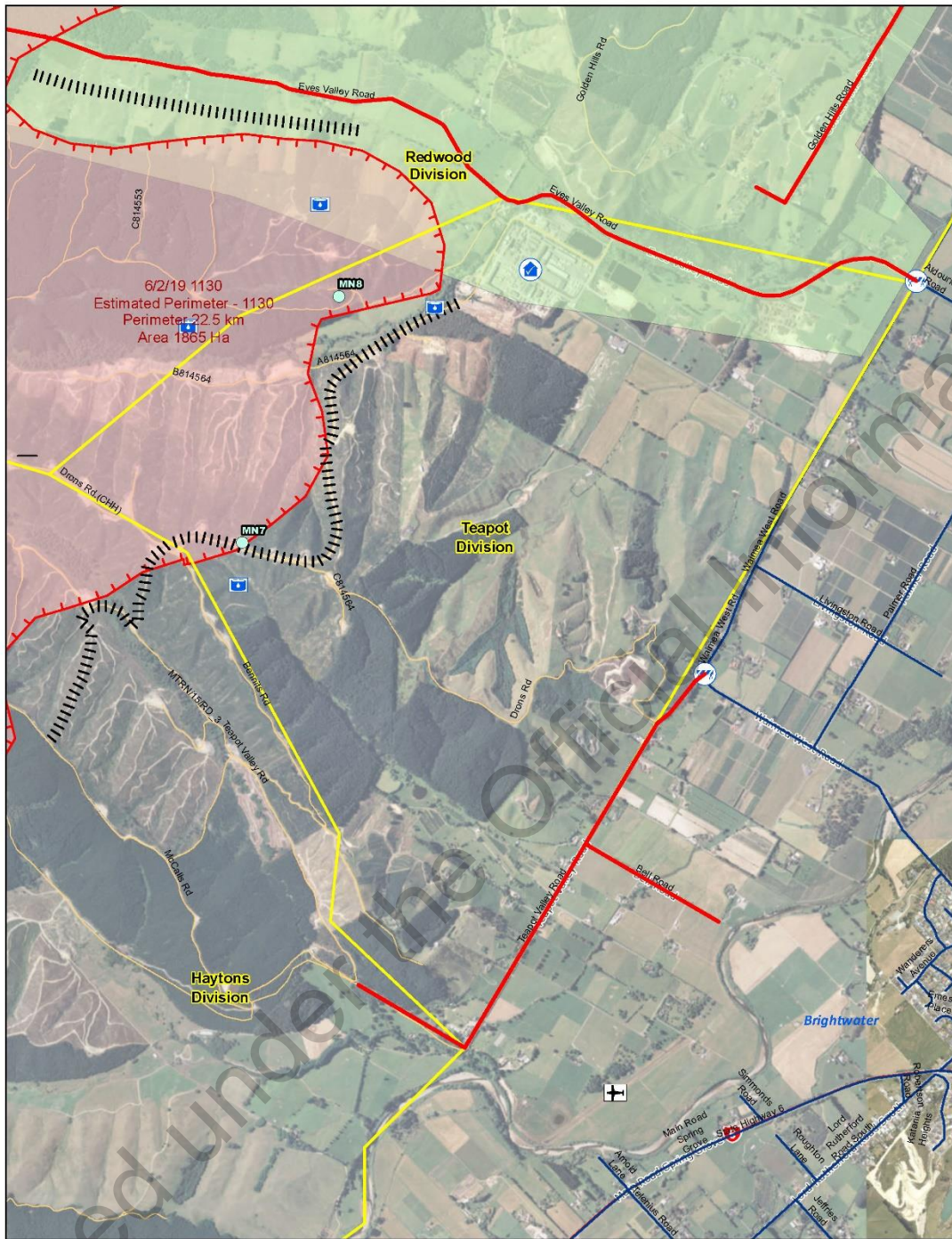


- Eves Valley Sawmill
- Fire Origin
- Forward Control Point
- Road Block
- Fire Sectors
- Pigeon Valley Fire Extent
- EM\_EventArea



Pigeon Valley Fire Overview



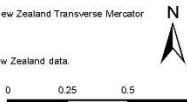


**FOR OFFICIAL USE ONLY.  
NOT FOR PUBLIC DISTRIBUTION.**

Date saved: 6/02/2019, 1514 hrs  
Prepared by: petei

Coordinate System: NZGD 2000 New Zealand Transverse Mercator  
Projection: Transverse Mercator  
Datum: NZGD 2000  
Units: Meter  
Sourced from Land Information New Zealand data.  
Crown copyright reserved.

Scale at A3 1:16,492

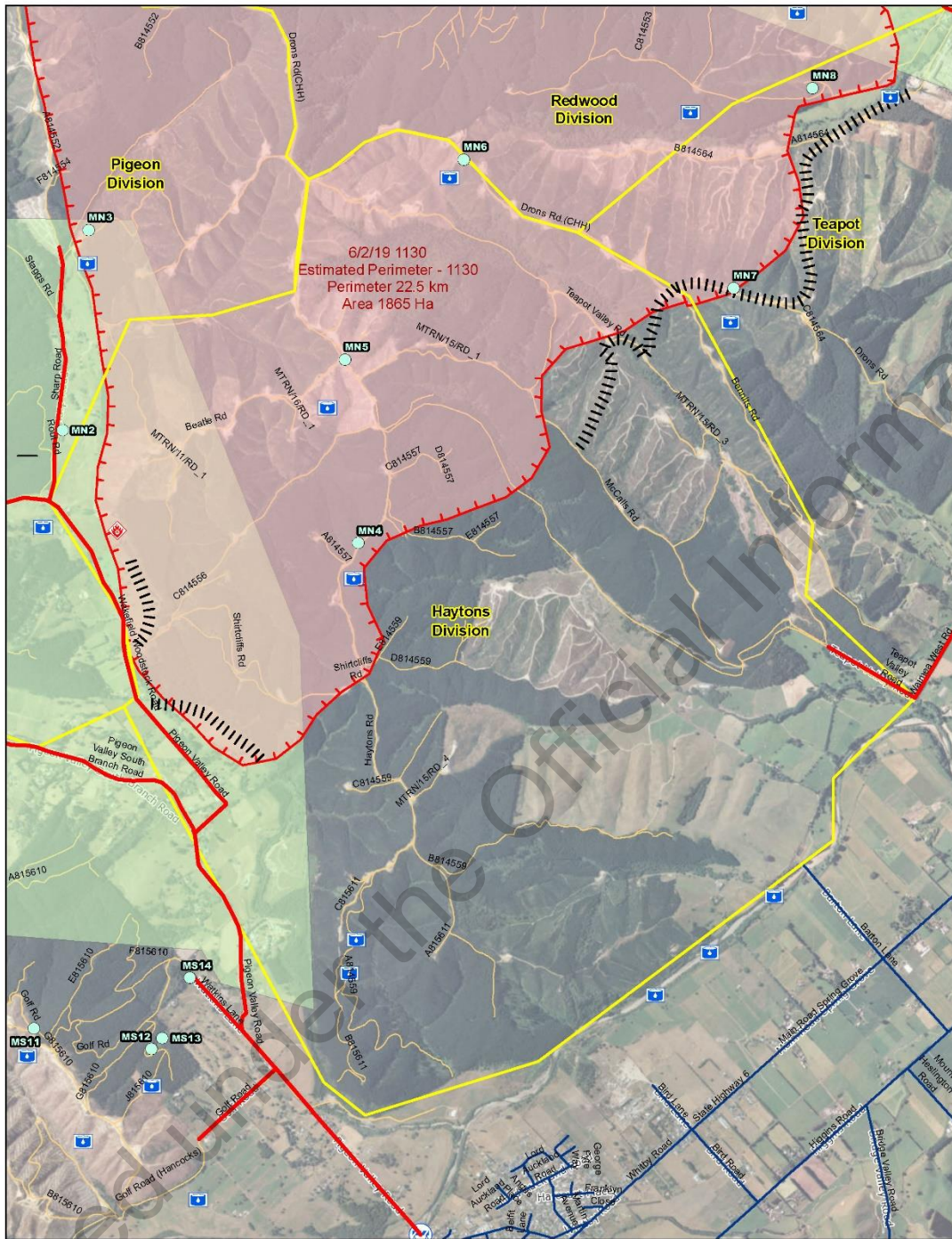


- | Description                 |
|-----------------------------|
| — Closed Roads              |
| Planned Dozer Break         |
| ✈ Airstrip                  |
| 🏠 Eves Valley Sawmill       |
| 🚧 Road Block                |
| 🔴 Fire Sectors              |
| 🔴 Pigeon Valley Fire Extent |
| 🔴 Pigeon Valley Fire Extent |
| 🟡 EM_Event Area             |



Pigeon Valley Fire Overview



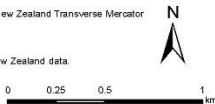


**FOR OFFICIAL USE ONLY.  
NOT FOR PUBLIC DISTRIBUTION.**

Date saved: 6/02/2019, 1514 hrs  
Prepared by: petei

Coordinate System: NZGD 2000 New Zealand Transverse Mercator  
Projection: Transverse Mercator  
Datum: NZGD 2000  
Units: Meter  
Sourced from Land Information New Zealand data.  
Crown copyright reserved.

Scale at A3 1:20,323

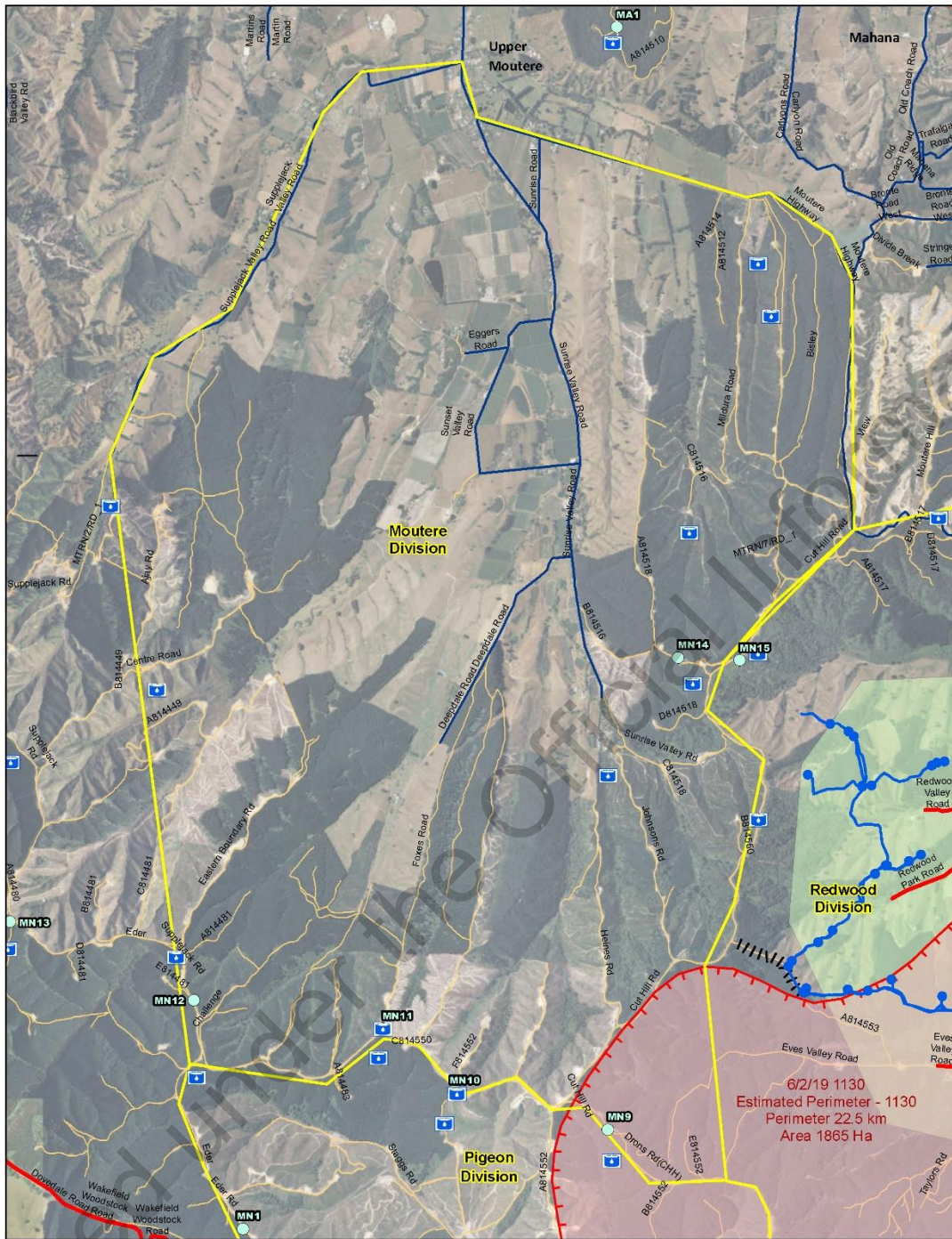


- Description**
- Planned Dozer Break
  - Eves Valley Sawmill
  - Fire Origin
  - Road Block
  - Fire Sectors
  - Pigeon Valley Fire Extent
  - EM\_Event Area



Pigeon Valley Fire Overview





**FOR OFFICIAL USE ONLY.  
NOT FOR PUBLIC DISTRIBUTION.**

Date saved: 6/02/2019, 1514 hrs  
Prepared by: petei

Coordinate System: NZGD 2000 New Zealand Transverse Mercator  
Projection: Transverse Mercator  
Datum: NZGD 2000  
Units: Meter  
Sourced from Land Information New Zealand data.  
Crown copyright reserved.

Scale at A3 1:24,625

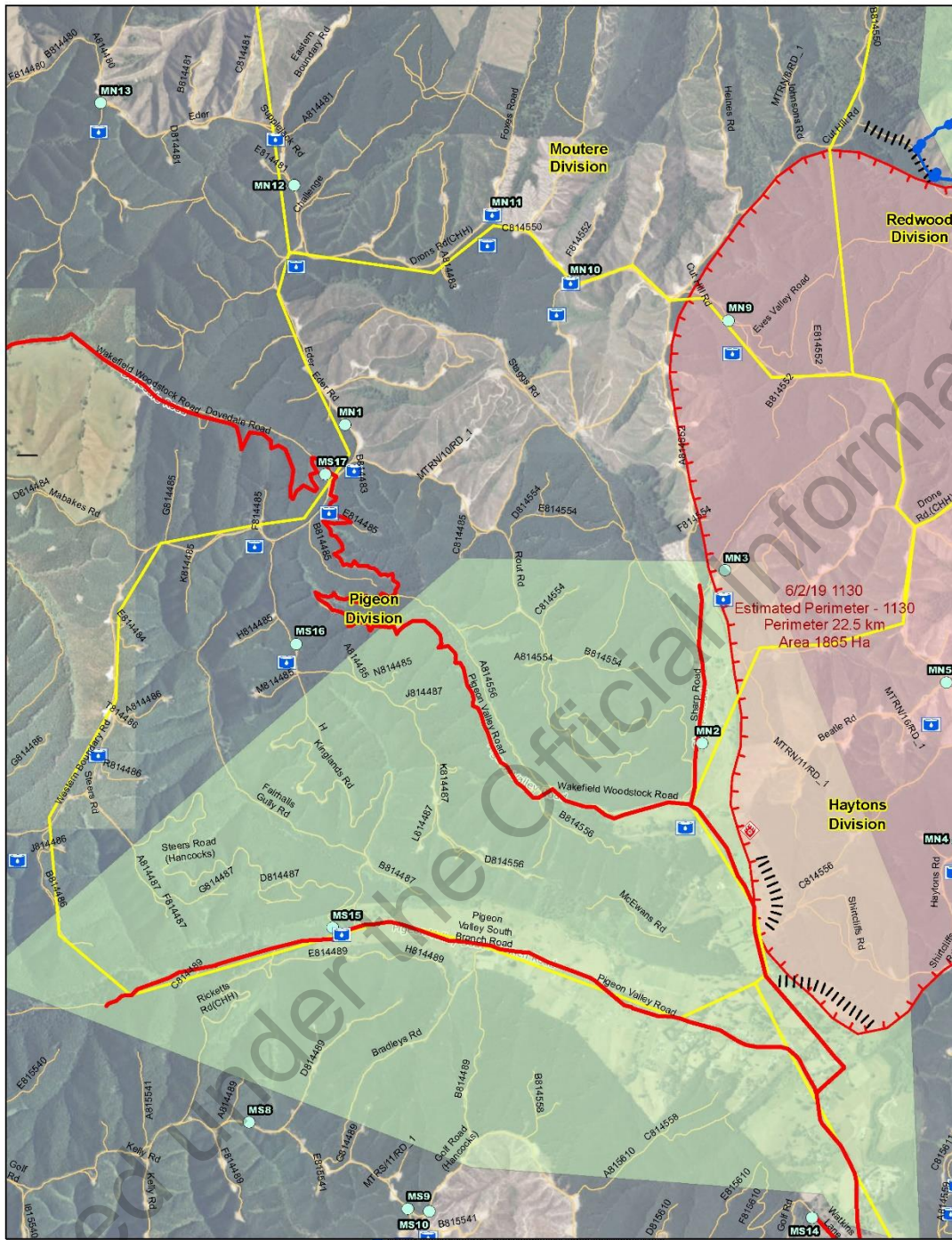


- WaterSurfaceFeatures\_RedwoodValleyPropertiesWithoutWater
- Waterpoints
- Water Locations\* - Tasman Pine Data
- WaterPipes\_RedwoodValleyPropertiesWithoutWater
- ClosedRoads
- Description
- || Planned Dozer Break
- Power Line
- FireSectors
- Pigeon Valley Fire Extent
- Pigeon Valley Fire Extent
- EM\_EventArea



Pigeon Valley Fire Overview





**FOR OFFICIAL USE ONLY.  
NOT FOR PUBLIC DISTRIBUTION.**

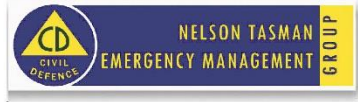
Date saved: 6/02/2019, 1514 hrs  
Prepared by: petei

Coordinate System: NZGD 2000 New Zealand Transverse Mercator  
Projection: Transverse Mercator  
Datum: NZGD 2000  
Units: Meter  
Sourced from Land Information New Zealand data.  
Crown copyright reserved.

Scale at A3 1:23,459

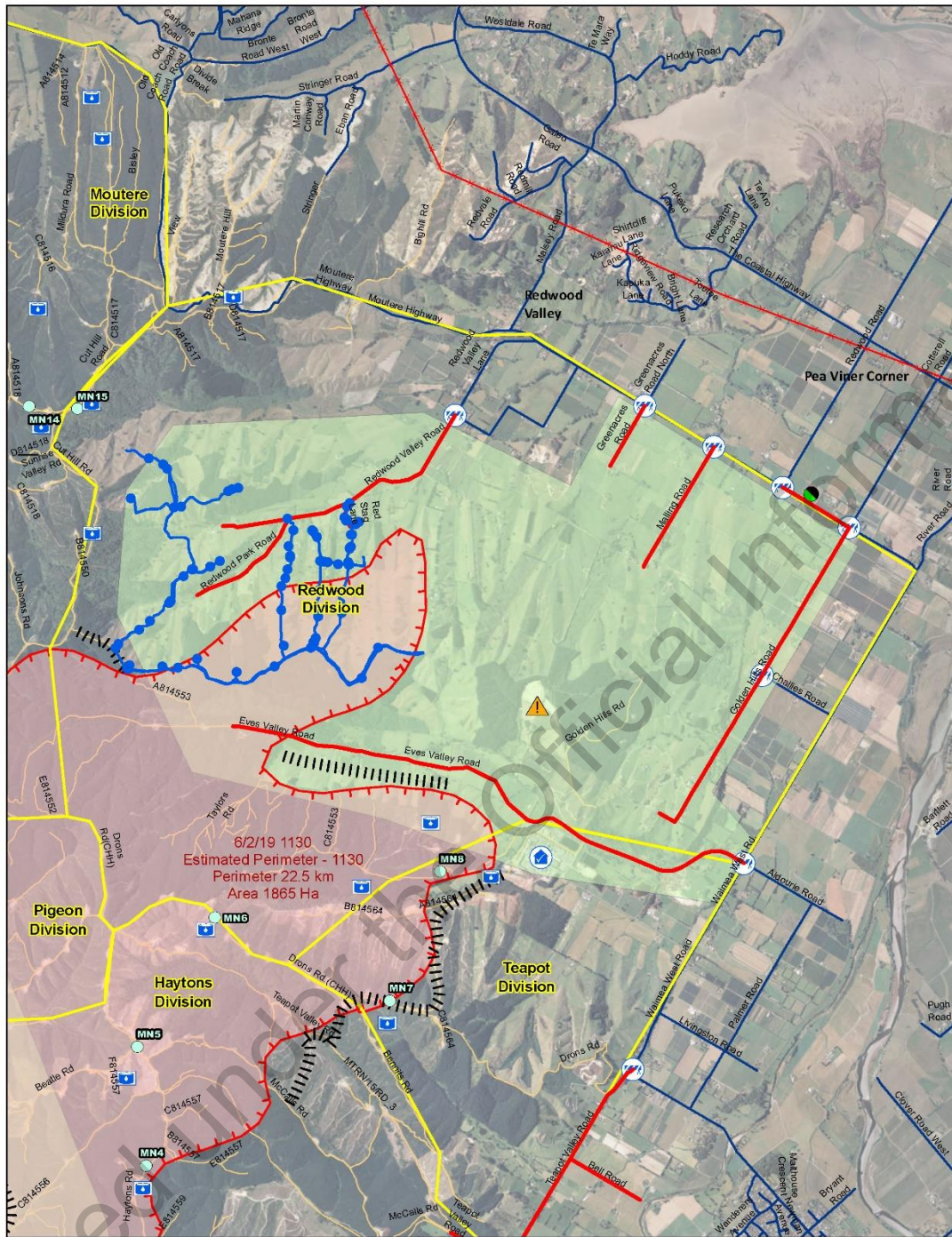


- Waterpoints
- Water Locations\* - Tasman Pine Data
- WaterPipes\_RedwoodValleyPropertiesWithoutWater
- Closed Roads
- Description**
- Planned Dozer Break
- Fire Origin
- Fire Sectors
- Pigeon Valley Fire Extent
- Pigeon Valley Fire Extent
- EM\_EventArea



Pigeon Valley Fire Overview





**FOR OFFICIAL USE ONLY.  
NOT FOR PUBLIC DISTRIBUTION.**

Date saved: 6/02/2019, 1514 hrs  
Prepared by: petei

Coordinate System: NZGD 2000 New Zealand Transverse Mercator  
Projection: Transverse Mercator  
Datum: NZGD 2000  
Units: Meter  
Sourced from Land Information New Zealand data.  
Crown copyright reserved.

Scale at A3 1:31,356



- Eves Valley Landfill
- Eves Valley Sawmill
- Forward Control Point
- Road Block
- Fire Sectors
- Pigeon Valley Fire Extent
- Pigeon Valley Fire Extent
- EM\_EventArea



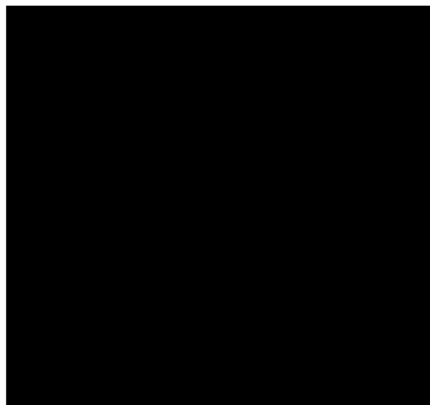
Pigeon Valley Fire Overview

<b>Incident Name</b>	<b>Operational Period</b>	<b>IAP COVER SHEET</b> RF199
Pigeon Valley	Date 8/2/2019 Time 0700 - 1900	

## INCIDENT ACTION PLAN

The items checked below are included in the incident Action Plan

- SITUATION REPORT
- INCIDENT OBJECTIVES
- ORGANISATIONAL LIST
- SECTOR ASSIGNMENT
- DIVISIONAL ASSIGNMENT
- AIR OPERATIONS PLAN
- COMMUNICATION PLAN
- SAFETY PLAN
- MEDICAL PLAN
- FIRE MAP
- WEATHER FORECAST AND MAP
- FIRE BEHAVIOUR FORECAST
- OVERVIEW MAPS AND DOWNLOAD QR CODES
- PUBLIC INFORMATION & MEDIA



<b>Approved by Incident Controller:</b>	<b>Signed</b>	<b>Date/Time</b>
Name		2000 7/2/19



<b>1. Incident Name</b> <b>Pigeon Valley</b>	<b>2. Operational Period</b> Date 8/2/2019 Time 0700 - 1900	<b>SITUATION REPORT</b> RF201
<b>3. Location</b> Pigeon Rd, Eves Valley, Tasman	<b>4. Vegetation</b> Forest/Scrub/Grass/Slash/ Other:	
<b>6. Assessment</b> <p>A large scrub/ forest fire is currently burning estimated to be 1874ha as at 1900hrs on 7<sup>th</sup> Feb with a This afternoon we have experienced a breakout in an area where the boundary hadn't been secured. approximately 170ha of heavy fuels (pine forest).          25 residences on the boundary of this breakout have been evacuated          Values at risk are life, property.          Telecommunications site on the end of Cooks Rd (near Wakefield) is at risk with northerly wind.          Evacuations are still in place for the following areas while operations are still active.</p> <ul style="list-style-type: none"> <li>• Eves Valley, Golden Hills Rd, Redwood Valley Rd, Tea Pot Valley, Bartons Lane</li> </ul>		
<b>7. Action taken</b> <p>Resources deployed include 6 bull dozers, 7 excavators, 6 tankers, 15 rural appliances, 9 urban appliances, 3 Defence Force appliances and 22 Helicopters are currently working today as well as two fixed wings. A lot of this resource is now targeting the breakout area.          Due to the nature of the terrain and vegetation helicopter resources are targeting this area, though control is proving difficult with the current weather conditions, extreme dryness of the forest/ scrub fuels and the resulting high fire intensity.          Changes in fuel as the fire moves to pasture and to the contingency fire-breaking (on the northern end) will assist in suppressing this breakout.          Black out work, machine fire breaking and hot spot targeting is continuing on the other parts of the fire ground.          For night shift there will be 11 crew, 5 bull dozers, 5 excavators, 4 tankers, 3 rural appliances and 6 urban appliances. No Defence Force resources.</p>		
<b>8. Factors,</b> <p>Extreme fire conditions. Limited water supply. Changeable wind conditions. Wind conditions the current breakout fire is creating. Sustained 20km winds gusting to 30km/hr, warm temperatures and lower humidity.</p>		

Released under the Official Information Act

**9. Predicted Incident Development**

Weather conditions and fuel continuity will have a large influence on the management of the current breakout.

6pm Today – 6am Friday

Rainfall: None expected.

Sustained wind: NNE 10 km/h or less through to about 10 pm. After 10 pm, winds shift to SSW, remaining less than 10 km/h through to 6 am.

Wind gusts: Gusts up to 30 km/h possible through to about 8 pm. Thereafter, gusts overnight will remain 20 km/h or less.

Temperature: Around 19°C at 6pm, decreasing to 11-12°C by 6am Friday.

Humidity: Near 45% at 6pm, increasing to 70-75% by 6 am Friday.

Efforts to suppress the fire are continuing but proving to be challenging for helicopters due to the height of the vegetation (e.g. trees and grass) and the height of the flames. The effectiveness of our efforts will improve as the fire heads towards the flatter grassland. We are also anticipating that the wind will decrease during the night.

**10. Prepared by:** [REDACTED]  
**Authorised by** [REDACTED] **(Incident Controller)**

**Date/Time:**  
1900 7<sup>th</sup> Feb 2019

Released under the Official Information Act



<b>1. Incident Name</b> Pigeon Valley	<b>2. Operational Period</b> Date 8/2/2019 Time 0700 - 1900	<b>INCIDENT OBJECTIVES</b> RF202
<b>3. Overall Incident Objectives</b> <ol style="list-style-type: none"> <li>1. Ensure the safety of responders and public at all times during the incident</li> <li>2. Minimise the impact on structures, infrastructure, assets and values during the incident</li> <li>3. Minimise impact on environment, culture and historic values during the incident</li> <li>4. Ensure communication and information, liaison with stakeholders/ community/ public/ government bodies and affected parties is timely, meets standards and requirements at all times during the incident</li> <li>5. Report on costs on a daily basis by 1800</li> <li>6. Return community to homes/normal life as soon as practicable</li> <li>7. Investigate cause (including protect initial ignition site and evidence)</li> </ol>		
<b>4. Strategies to meet objectives</b> <ol style="list-style-type: none"> <li>1. Create a safety plan and safety briefing for all staff and contractors. Monitor fire behaviour and establish triggers and cordons for withdrawals and evacuation.</li> <li>2. Use media, trusted community channels and stakeholders to establish communications and engagements. Establish regular briefings and updates.</li> <li>3. Identify critical infrastructure, assets and values. Structures have structure protection crews and technical liaison where required. Water courses and dip sites identified with environmental protection.</li> <li>4. Cultural/Historical/environmental values identified on incident ground (Actual and projected)</li> <li>5. Assign fire investigation to determine cause</li> <li>6. Financial reporting established and continued</li> <li>7. Create a recovery plan with community and stakeholders to assist post incident. <ul style="list-style-type: none"> <li>• Consider operation delivery to minimise impacts in support of the recovery plan.</li> </ul> </li> </ol>		
<b>5. Prepared by:</b> ██████████	<b>Date/Time: 1900 7/2/19</b>	

Released under the Official Information Act

<b>1. Incident Name</b>	<b>2. Operational Period</b> Date 8/2/2019 Time 0700 - 1900	<b>ORGANISATION ASSIGNMENT</b> RF203	
<b>3. Incident Control</b>		<b>Phone</b>	<b>Radio Ch</b>
Incident Controller	[REDACTED] (NIMT)	[REDACTED]	
Deputy IC	[REDACTED] (NMIT)	[REDACTED]	
Information Officer	[REDACTED]	[REDACTED]	
Safety Officer	[REDACTED] (NMIT)	[REDACTED]	
Liaison Officer	[REDACTED]	[REDACTED]	
<b>4. Agency Representative</b>		<b>Phone</b>	<b>Radio Ch</b>
Lead Agency	FENZ [REDACTED] PRFO	[REDACTED]	
Agency	Police [REDACTED]	[REDACTED]	
Agency	[REDACTED]	[REDACTED]	
Agency	CDEM [REDACTED]	[REDACTED]	
Agency	CDEM Duty Phone	[REDACTED]	
Agency	FENZ Urban Liason [REDACTED]	[REDACTED]	
<b>5. Planning/Intell Section</b>		<b>Phone</b>	<b>Radio Ch</b>
Planning/Intell Manager	[REDACTED]	[REDACTED]	
Situations Unit	[REDACTED]	[REDACTED]	
	[REDACTED] (FBAN)	[REDACTED]	
	[REDACTED] (Observer)	[REDACTED]	
	[REDACTED] (Intel)	[REDACTED]	
	[REDACTED] (GIS)	[REDACTED]	
	[REDACTED] (GIS)	[REDACTED]	
	[REDACTED] (Observer)	[REDACTED]	
	[REDACTED] (Observer)	[REDACTED]	
Resources Unit	[REDACTED]	[REDACTED]	
	[REDACTED] (EoC)	[REDACTED]	
	[REDACTED] (Caravan	[REDACTED]	
	Check in)	[REDACTED]	
Management Support Unit	[REDACTED]	[REDACTED]	
Information Unit			
Advance Planning Unit			
Technical Specialists Unit			

Released under the Official Information Act

6. Logistics Section		Phone	Radio Ch
Logistics Manager	██████████ (NMIT)	██████████	
	██████████ (Day)		
	██████████ Night)		
Supply Unit	██████████		
Catering Unit			
Facilities Unit			
Finance Unit			
Communications Unit			
Medical Unit			

7. Operations Section		Phone	Radio Ch
Operations Manager	██████████	██████████	
Deputy Operations Manager			
Division One Commander			
Sector A Supervisor			
Sector B Supervisor			
Sector C Supervisor			
Sector D Supervisor			
Division Two Commander			
Sector E Supervisor			
Sector F Supervisor			
Sector G Supervisor			
Sector H Supervisor			
Air Division Commander	██████████ (NMIT)	██████████	
Air Attack Supervisor	██████████		
Air Support Supervisor	██████████		

8. Prepared by: ██████████ Date/Time: 1900 7/2/19

Released under the Official Information Act

<b>1. Incident Name</b> Pigeon Valley		<b>2. Operational Period</b> Date 8/2/2019 Time 0700 – 1900		<b>DIVISION ASSIGNMENT</b> RF204a	
<b>3. Division</b> Alpha		<b>4. Description</b> Point of ignition to Dove Saddle on Eder Rd			
<b>5. Division Commander</b>	<b>Affiliation</b>	<b>Phone</b>	<b>Radio Ch</b>		
██████████		██████████	Command: Fire Crew: Simplex		
<b>6. Resources Assigned this Period</b>					
<i>Sector</i>		<i>Supervisor</i>		<i>Crews</i>	<i>Radio Ch</i>
Bulldozer D7		TLC			
Excavator 20T		TLC			
Tasman Smoke Chaser + 3px					
Hira Smoke Chaser + 3px					
Hira 5575 +4px					
Doc Motukea 3px					
DOC Takaka 8px					
Greymouth 4px					
<b>7. Division Assignment/Special Instructions</b>					
<p><b>Ground Crews:</b> Blacking out to 30 metres in to the forest in successive 10 metre increments along the length of the perimeter where safe to do so. Provide 2 hourly SITREP to FCP by COMMS Channel OPS2 or Mobile. Join Comms Facebook Group "Pigeon Valley – INTERNAL COMMS" and contribute imagery and video throughout day. Also view images and video collected by aerial ops during day.</p> <p><b>Heavy Equipment –</b></p> <ol style="list-style-type: none"> <li>1. Widen the break from the head of Sharps Valley up the ridge to connect to Cut Hill Rd</li> <li>2. Bryants using fellerbunchers to remove large trees on the east side of Cut hill Rd (already on site).</li> <li>3. Strengthen Eder road fire break from Cuthill Rd to Route Rd and down Route Rd to North pigeon Valley Rd.</li> </ol> <p><b>Helicopters:</b> Support ground crew as required and divisional commanders to call air attack (██████████) with requirements</p>					
<b>8. Division Communications</b>				<b>Phone</b>	<b>Radio Ch</b>
Operations Manager		██████████	██████████	Fire 1/Cellphone	
Air Division Commander		██████████	██████████	Fire 4/Cellphone	
<b>9. Prepared By:</b> ██████████			<b>Date/Time</b> 1900 7/2/19		