

# Communications Plan

RF205

<b>3. Radio Channels</b>				
<i>Assigned To</i>	<i>Function</i>	<i>Channel</i>	<i>Frequency</i>	<i>System</i>
Command		Waimea 1	152.55000 RX 154.33125 TX	
Division Pigeon (Alpha)	Operational	Fire 1	143.82500	
Division Hayton (Zulu)	Operational	Fire 2	143.78750	
Division Teapot (Yankie)	Operational	Fire 3	140.92500	
Division Redwood (Xray)	Operational	Fire 1	143.82500	
Division Moutere (Bravo)	Operational	Fire 2	143.78750	
Air Ops -Heli	Operational	Fire 4	140.61250	
Air Ops – Fixed Wing	Operational	Fire 10	140.98750	
Emergency		Waimea 1	152.55000 RX 154.33125 TX	
FireCom		FireCom		
<b>4. Telephone</b>				
<i>Assigned To</i>	<i>Landline</i>	<i>Cell phone</i>	<i>Fax</i>	<i>Comments</i>
Emergency		111		
Regional Command Centre (RCC)				
<b>6. Other (e.g. email, Satphone, etc)</b>				
GIS Mapping	planning.intelligence@nelsontasmancdem.govt.nz			
ICP	Reception.nelsontasman@fireemergency.nz			
Command Unit	<a href="mailto:lcu.nelson@fireemergency.nz">lcu.nelson@fireemergency.nz</a>			

# Safety Plan

RF209

## 3. General Safety Points

Everyone is to be signed in and out of the fire ground through the Incident Control Point for both safety check and payment records.

Maintain regular situation reports (containing all relevant information) via line supervisors.

LACES	Fire Orders	Watchouts
<b>L - Lookout(s)</b> <b>A – Awareness</b> – Anchor Point(s) <b>C – Communication(s)</b> <b>E – Escape Route(s)</b> <b>S – Safety Zone(s)</b>	<ol style="list-style-type: none"> <li>conditions and forecasts</li> <li>Know what your fire is doing at all times.</li> <li>Base all actions on current and expected fire behaviour of the fire.</li> <li>Identify escape routes and safety zones and make them known.</li> <li>Post lookouts when there is possible danger.</li> <li>Stay alert. Keep calm, Think clearly, act decisively.</li> <li>Maintain prompt communication with your crew/s, your supervisor and adjoining crews.</li> <li>Give clear instructions and ensure they are understood.</li> <li>Maintain control of your crew/s at all times.</li> <li>Fight fire aggressively having provided for safety first.</li> </ol>	<ol style="list-style-type: none"> <li>Fire size is unknown (no size up).</li> <li>Unfamiliar territory</li> <li>Safety zones and escape routes not identified.</li> <li>Unfamiliar with weather and local factors influencing fire behaviour.</li> <li>No communications link with crew members or supervisor.</li> <li>Instructions and assignments not clear.</li> <li>Weather is getting hotter , drier and relative humidity dropping</li> <li>Wind increases and/or changes direction.</li> <li>Getting frequent spot fires across the line</li> <li>Working uphill or downwind of a fire</li> <li>Working on a steep slope</li> <li>Working in rugged terrain</li> <li>Can't see main fire</li> <li>In unburnt vegetation</li> <li>Walking through hot ashes</li> <li>Working alone</li> <li>Getting tired</li> <li>Working near power lines</li> <li>Working near machinery</li> <li>Working with aircraft</li> <li>Working around trees or spars</li> </ol>

## 4. Specific Safety Points

- Access points into fire controlled. Only those authorized to enter and they must receive a brief and be logged in. Time and access point
- Public access Managed
- Weather fire behaviour monitored for changes and communicated to crews. Risk identified to crews
- All crews to have adequate food, water, PPE to manage fatigue and hydration
- Crews to have identified emergency escape routes and emergency plan in the event of harm. Meeting point identified once evacuated.
- All workers to ensure they are competent for the tasks and risks given.
- Air and ground crews to be isolated from risk areas during operations.
- Potential methane flares (Division Hayton) from Eves Valley Landfill

# Medical Plan

RF206

3. First Aid Station		Phone/Radio	Paramedics			
Name	Location	Channel	available at Station			
Each Crew must have available one First aid Level 1 Certified	Each crew					
Nelson 91 Ambulance	Forward command post	Waimea 1	1 Paramedic and 1 EMT			
4. Transportation		Phone/Radio	Paramedics			
Ambulance Service	Address	Channel	available with Ambulance			
Ambulance St Johns	Richmond station	111	Yes			
	Motueka/Stoke Nelson/					
5. Hospitals		Phone	Travel Time		Burn	Heli
Hospital Name	Address		Road	Air	Unit	Pad
Nelson Public Emergency	Waimea Rd.	035461800	27m	4min	y	y
Hutt Hospital (Burn Unit)		045666999	n/a	40min	Y	y
6. Special Emergency Procedures						
Emergency Helicopter stationed at Nelson Airport "111"						
8. Reviewed by Safety Advisor:						Date/Time

FIRE WEATHER FORECAST

Attention Tasman Fire CD

FIRE WEATHER FORECAST

For Location [redacted] Pigeon Valley near Wakefield

Issued by MetService at 08:55am 06-Feb-2019, and valid for the following 9 hours

Wind: East to northeast 15-20km/h gusting 25-30km/h rising to east to southeast 25km/h gusting 40km/h this afternoon.

Precipitation: Remaining drizzle clearing this morning - Less than 1mm.

Temperature: Rising to 20-21C this afternoon.

Humidity: 65% lowering to 40-50% this afternoon.

Outlook for the next 12 hours :

Mailny fine, some cloud about. Temperatures lowering to 10-12C.

Humidity increasing to 70-80%. Southeast easing to 10-15km/h.

Outlook for next 6 days:

Thursday: Light winds, sunny, dry and max temperature around 21C.

Friday: Light winds, sunny, dry and max temperature around 20C.

Saturday: Light winds, sunny, dry and max temperature around 22C.

Sunday: Northerlies, partly cloudy, a few light showers and max temperature about 22C.

Monday: Northerlies and rain, max temperature arond 21C.

Tuesday: Light winds, sunny and max temperature around 23C.

Fire Indices for Wednesday 6<sup>th</sup> Feb 2019 (8:00am)

FFMC 83 (easy Ignition)

DMC 95.8

DC 451.1

ISI 2.9 (moderately fast rate)

BUI 125.1 (Extreme)

FWI 14.5 (high fire intensity)

Released under the Official Information Act

### FIRE BEHAVIOUR FORECAST

Fire name: Pigeon Road				Prediction for: 0800-1800 07 Feb-19					
Prepared by [REDACTED]				Time and date issued: 1500 06 Feb 19					
Forecast no. 1				Day Shift					
<i>Assumptions:</i>				<i>today's forecast</i>					
Temp	RH	Wind	Slope *	FFMC	DMC	DC	ISI	BUI	FWI
17.1	59.4	10.7	0	86	98.3	463.3	4.2	128.1	19.1

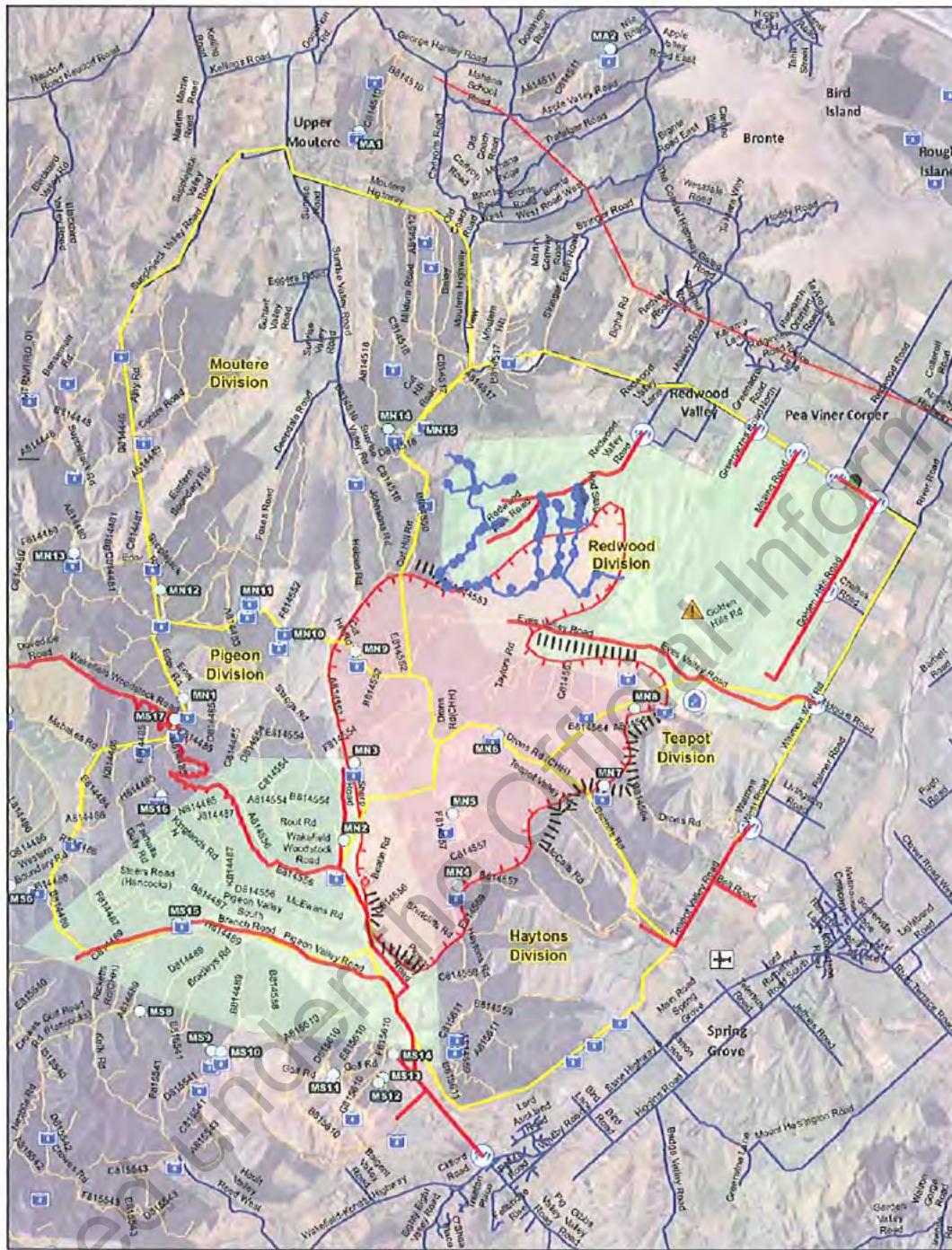
Rates of spread are the equilibrium rate of spread, not the build-up phase, with continuous fuel and similar fuel type.

**Fire Behaviour General:**

<b>Expected fire behaviour – slope 0°</b>	<b>Forecast</b> worst case – 28°C 45%RH slope 20° 1400-1800
<i>Fuel type: Mature Pine – 5m pruned</i>	<i>Fuel type: Mature Pine – 5m pruned</i>
Expect HF rate of spread of 40 m/hr HF Intensity                      633 kw/m Flame lengths                      1.5	Expect HF rate of spread of 200 m/hr HF Intensity                      2100 kw/m Flame lengths                      3 m
<i>Fuel type: Scrub/gorse 2m height</i>	<i>Fuel type: Scrub/ gorse 2m height</i>
Expect HF rate of spread of 926 m/hr HF Intensity                      >10000 kw/m Flame lengths                      6.7 m	Expect HF rate of spread of 3000 m/hr HF Intensity                      >10000 kw/m Flame lengths                      13 m
<i>Fuel type: Grass-70% GC, 100% cover, 0.1m height</i>	<i>Fuel type: Ungrazed Grass -70% GC, 100% cover, 0.2m height</i>
Expect HF rate of spread of 187 m/hr HF Intensity                      296 kw/m Flame lengths                      1.1 m	Expect HF rate of spread of 600 m/hr HF Intensity                      1050 kW/m Flame lengths                      2 m
<b>Safety Considerations:</b>	
Head Fire intensity, and flank fire intensity exceed threshold for direct attack in gorse/ scrub fuels.	Head Fire intensity exceed threshold for direct attack in gorse and mature pine fuels, and flank fires in gorse. Flank fires intensity is now too high for ground crews
. Weather conditions for Thursday are predicted to be similar to Wednesday. The NE conditions should continue to provide higher relative humidities and enable a focus on containment activity. Watch for a fall in RH as the afternoon develops and be prepared to adjust your attack strategy.	

Released under the Official Information Act





**FOR OFFICIAL USE ONLY.  
NOT FOR PUBLIC DISTRIBUTION.**

Date saved: 6/02/2019, 1514 hrs  
Prepared by: petei

Coordinate System: NZGD 2000 New Zealand Transverse Mercator  
Datum: NZGD 2000  
Units: Meter  
Sourced from Land Information New Zealand data  
Crown copyright reserved.

Scale at A3: 152,511  
0 0.2505 1 km

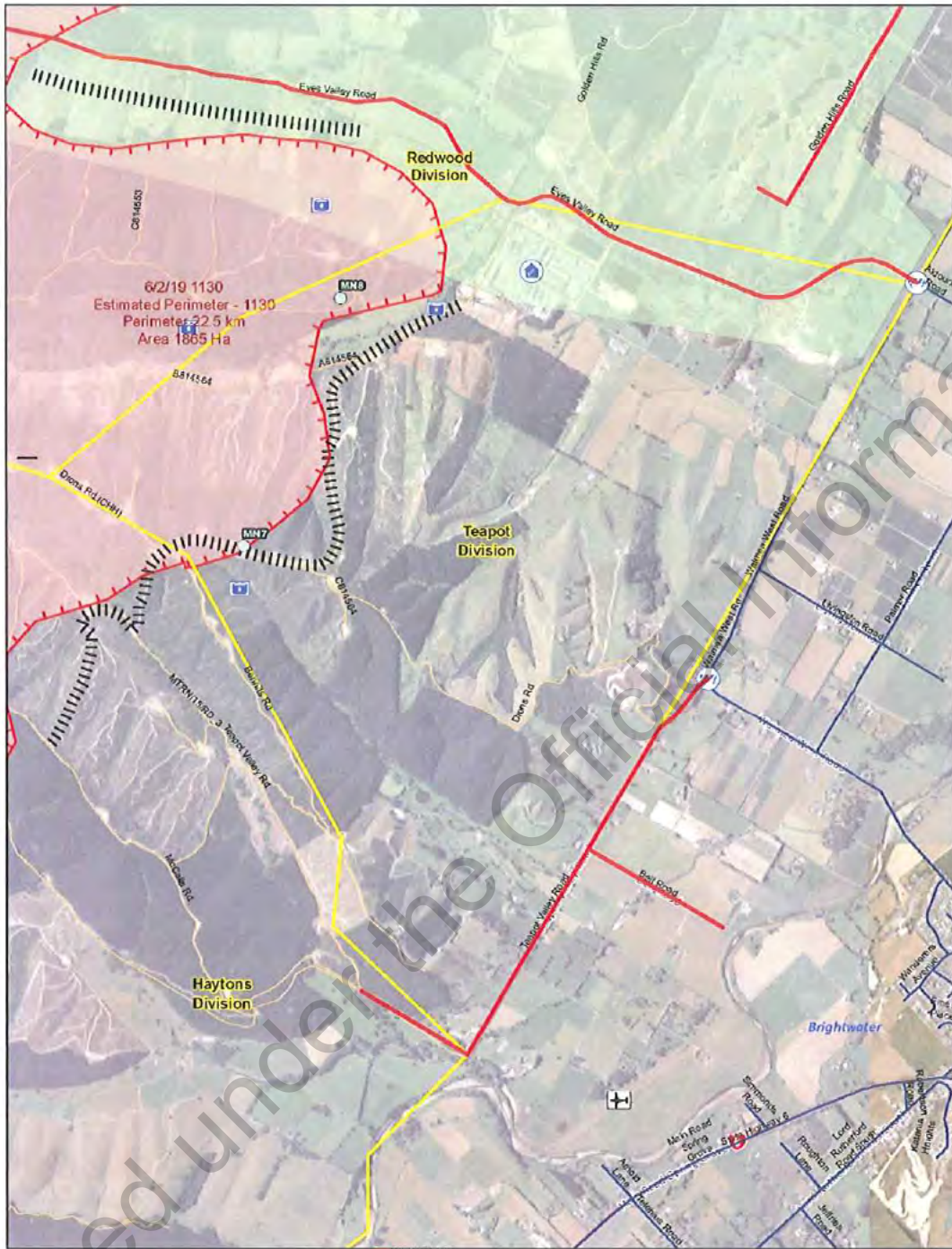


- Eves Valley Sawnmill
- Fire Origin
- Forward Control Point
- Road Block
- Fire Sectors
- Pigeon Valley Fire Extent
- Pigeon Valley Fire Extent
- E.M. Ever Area



Pigeon Valley Fire Overview





**FOR OFFICIAL USE ONLY.  
NOT FOR PUBLIC DISTRIBUTION.**

Date saved: 6/02/2019, 1514 hrs  
Prepared by: petei

Coordinate System: NZGD 2000 New Zealand Transverse Mercator  
Projection: Transverse Mercator  
Datum: NZGD 2000  
Units: Meter  
Scale at A3: 1:16,492

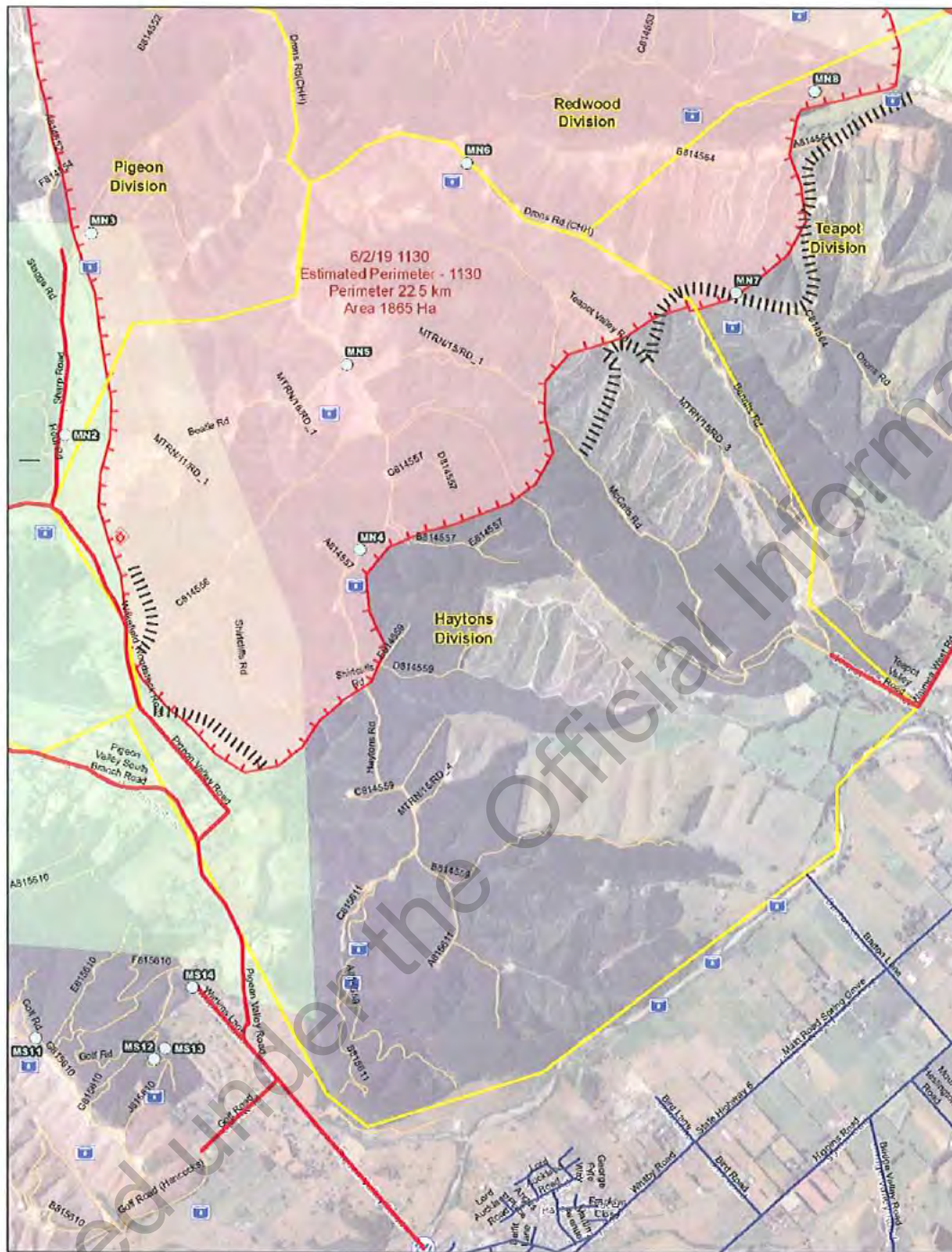


- Description: Pigeon Valley Fire Extent
- Description: Fire Sections
- Description: Planned Dozer Break
- Description: Atstrip
- Description: Eyes Valley Sawmill
- Description: Road Block
- Description: Pigeon Valley Fire Extent
- Description: EM\_EventArea



Pigeon Valley Fire Overview





**FOR OFFICIAL USE ONLY.  
NOT FOR PUBLIC DISTRIBUTION.**

Date saved: 6/02/2019, 1514 hrs  
Prepared by: petel

Coordinate System: NZGD 2000 New Zealand Transverse Mercator  
Projection: Transverse Mercator  
Datum: NZGD 2000  
Units: Meter  
Sourced from: Land Information New Zealand data  
Crown copyright reserved.

Scale at A3: 1:20,323

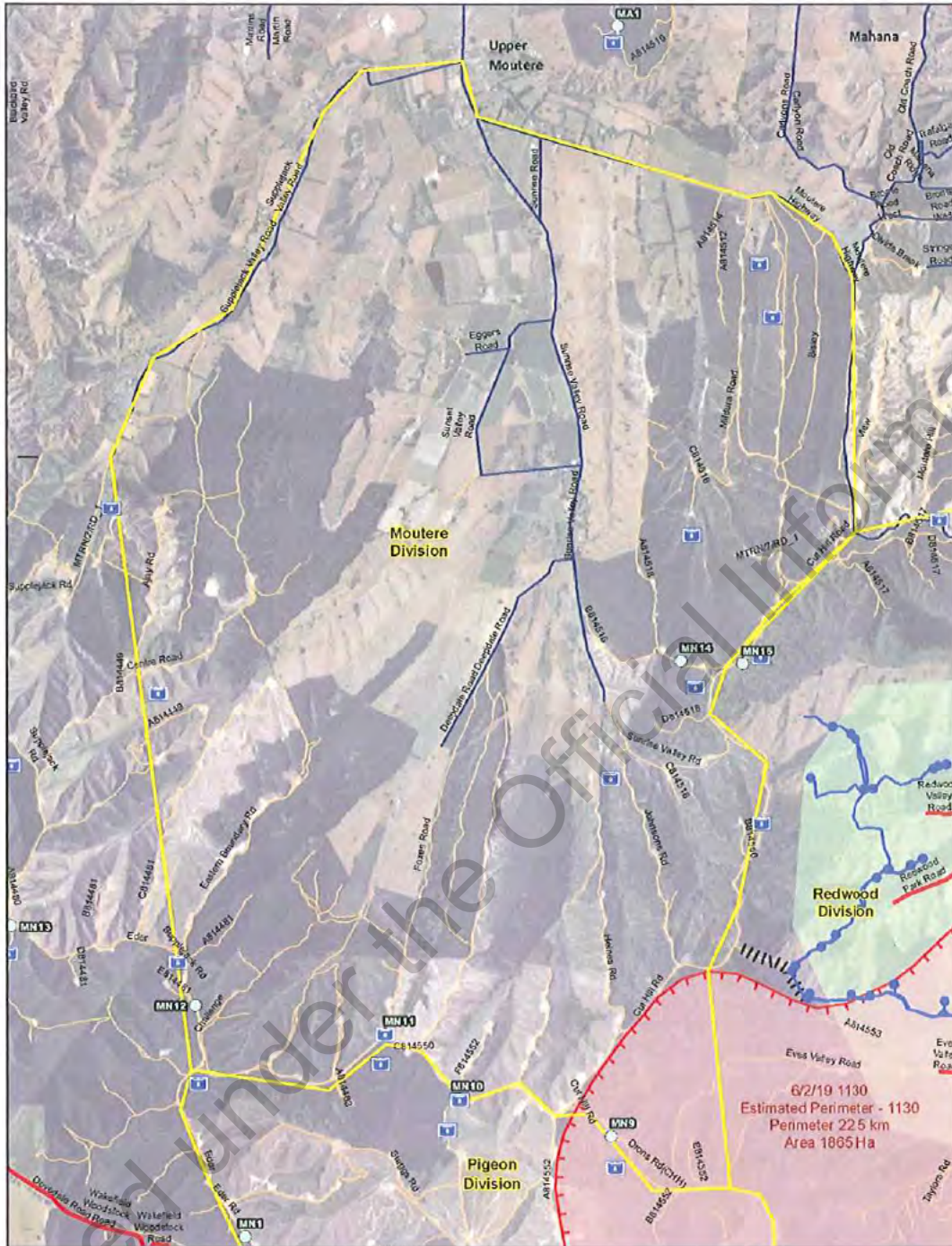


- Description**
- Planned Dozer Break
  - Eves Valley Sawmill
  - Fire Origin
  - Road Block
  - Fire Sector
  - Pigeon Valley Fire Extent
  - EM Area



Pigeon Valley Fire Overview





**FOR OFFICIAL USE ONLY.  
NOT FOR PUBLIC DISTRIBUTION.**  
Date saved: 6/02/2019, 1514 hrs  
Prepared by: petei

Coordinate System: NZGD 2000 New Zealand Transverse Mercator  
Projection: Transverse Mercator  
Datum: NZGD 2000  
Units: Meter  
Sourced from Land Information New Zealand data  
Crown copyright reserved.  
Scale at A3: 1:24,625

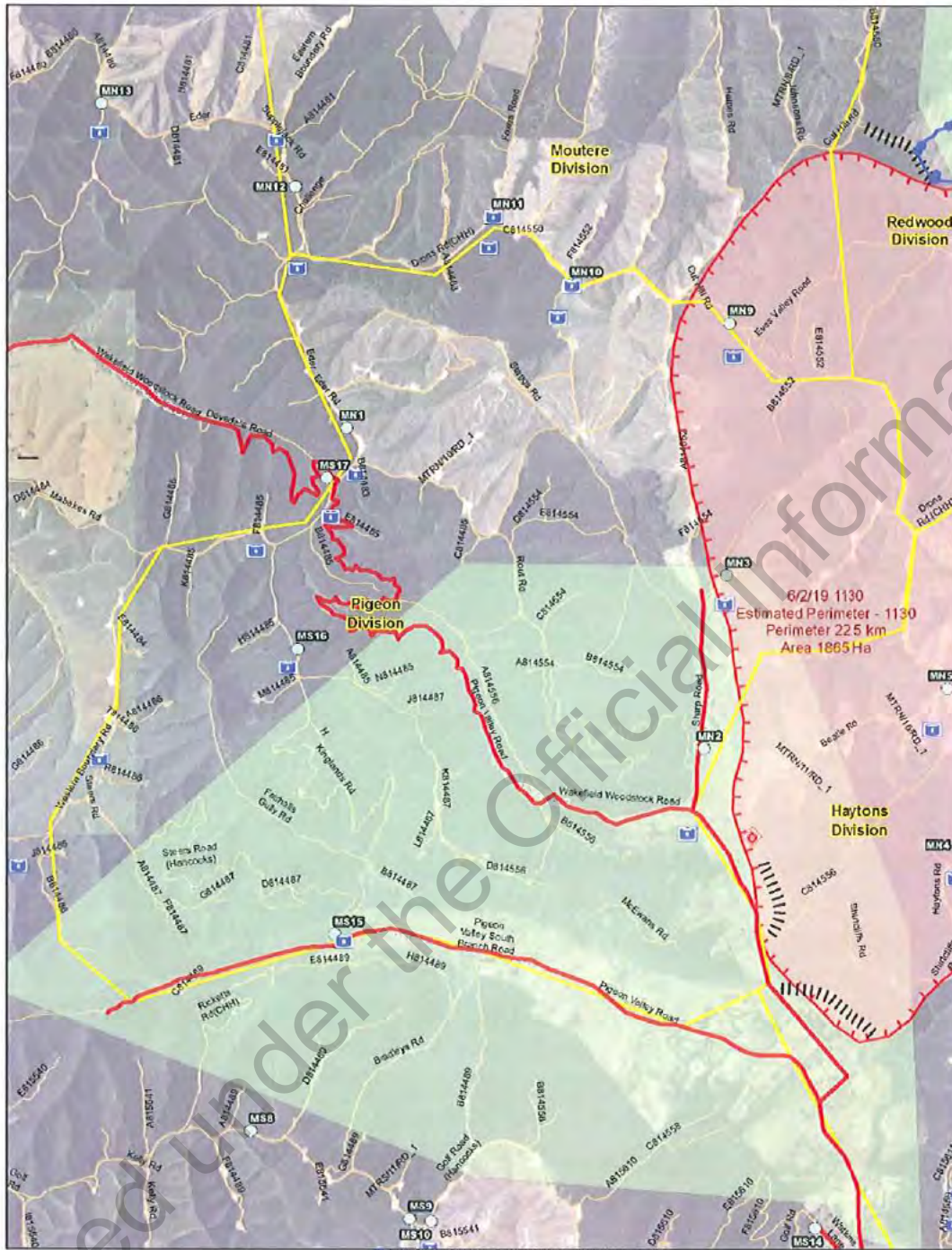


- Water/Surface Features\_RedwoodValleyPropertiesWithoutA
- Waterpoints
- Water Locations\* - Tasman Fire Data
- Water Pipes\_Redwood Valley Properties Without Water
- Close Roads
- Description
- Planned Dozer Break
- Power Line
- Fire Sectors
- Pigeon Valley Fire Extent
- Pigeon Valley Fire Extent
- EM\_EverWise



Pigeon Valley Fire Overview



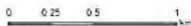


**FOR OFFICIAL USE ONLY.  
NOT FOR PUBLIC DISTRIBUTION.**

Date saved: 6/02/2019, 1514 hrs  
Prepared by: petel

Coordinate System: NZGD 2000 New Zealand Transverse Mercator  
Projection: Transverse Mercator  
Datum: NZGD 2000  
Units: Meter  
Sourced from Land Information New Zealand data  
Crown copyright reserved.

Scale at A3: 1:23,459

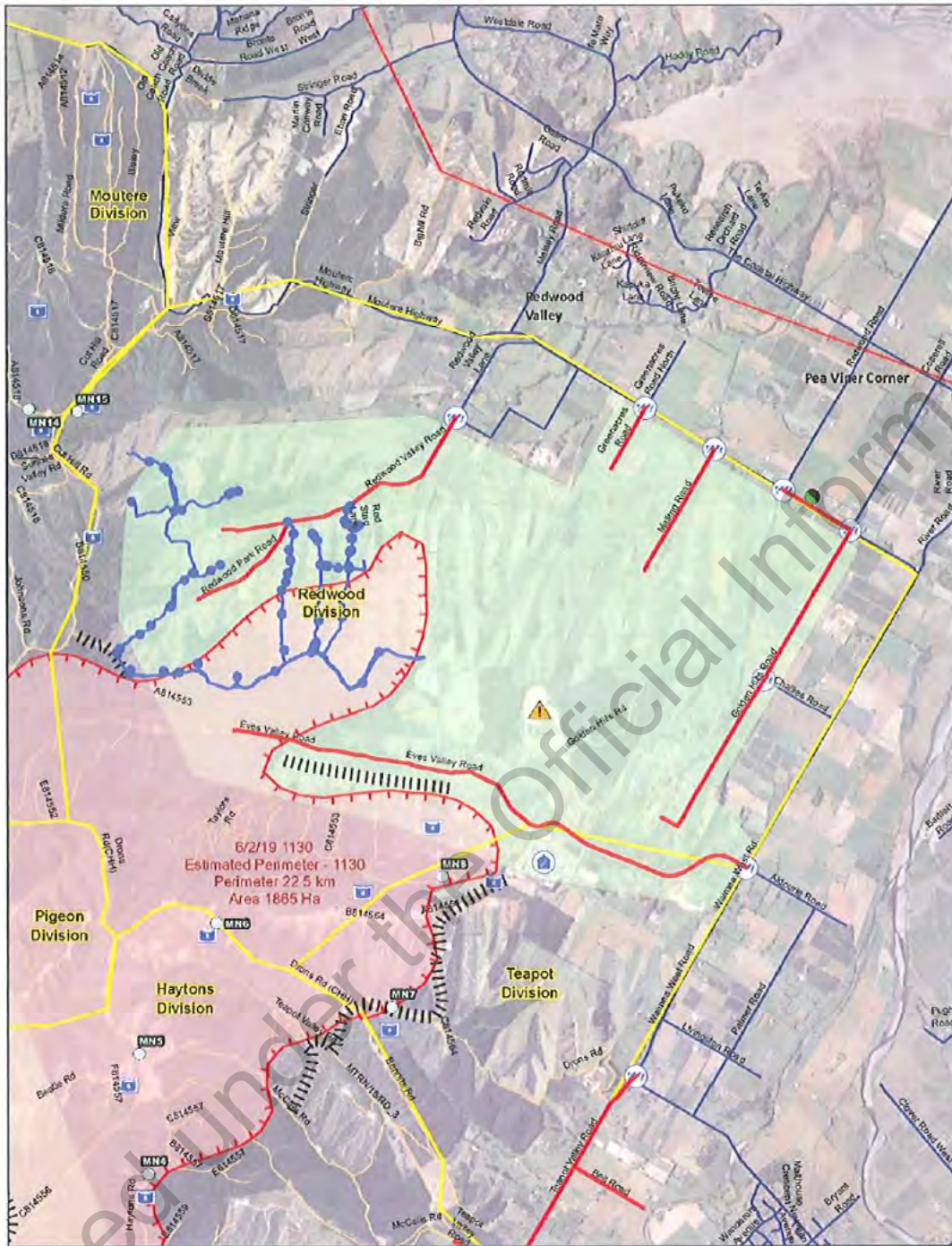


- Water points
- Water Locations - Tasman Fire Data
- Water Pipes - Redwood Valley Properties without Water
- Close Roads
- Description**
- Planned Dozer Break
- Fire Origin
- Fire Sectors
- Pigeon Valley Fire Extent
- EM\_Ever Area



Pigeon Valley Fire Overview





**FOR OFFICIAL USE ONLY.  
NOT FOR PUBLIC DISTRIBUTION.**

Date saved: 6/02/2019, 1514 hrs  
Prepared by: petel

Coordinate System: NZGD 2000 New Zealand Transverse Mercator  
Projection: Transverse Mercator  
Datum: NZGD 2000  
Units: Meter  
Sourced from Land Information New Zealand data  
Copyright reserved

Scale at A3: 1:31,356



- Power Line
- Eves Valley Landfill
- Eves Valley Swmill
- Forward Control Point
- Road Block
- Fire Section
- Pigeon Valley Fire Extent
- Pigeon Valley Fire Extent
- EM Ever Area



Pigeon Valley Fire Overview

## Summary of shift activities

A large rectangular table with approximately 35 horizontal rows and a few vertical columns. The table is currently empty and intended for recording shift activities. A large diagonal watermark reading "Released under the Official Information Act" is visible across the page, partially overlapping the table.



# IAP Cover Sheet

## INCIDENT ACTION PLAN

The items checked below are included in the incident Action Plan

- SITUATION REPORT
- INCIDENT OBJECTIVES
- ORGANISATIONAL LIST
- SECTOR ASSIGNMENT
- DIVISIONAL ASSIGNMENT
- AIR OPERATIONS PLAN
- COMMUNICATION PLAN
- SAFETY PLAN
- MEDICAL PLAN
- FIRE MAP
- WEATHER FORECAST AND MAP
- FIRE BEHAVIOUR FORECAST
- FACILITIES LAYOUT PLAN

Approved by Incident Controller:

Signed

Date/Time



1. Pigeon Valley	2. 6 Feb2019 0700 to 1900
------------------	---------------------------

# Situation Report

RF201

<b>1. Incident Name</b> Pigeon Valley	<b>2. Operational Period</b> Date 6 <sup>th</sup> Feb 20 Time 16:30	<b>SITUATION REPORT</b> RF201
<b>3. Location</b> Pigeon Rd, Eves Valley ,Tasman	<b>4. Vegetation</b> Forest/Scrub/Grass/Slash/	
<b>6. Assessment</b>  A large scrub/ forest fire is currently burning estimated to be 1900ha at 12:30 hrs with a perimeter of 22km.  Values at risk are life and property, assets.  Confirmed minor property damaged. Unconfirmed reports of potential property losses in Eves Valley and Redwood Valley.  The Eves Valley sawmill is at risk and fire crews are carrying out structural protection on structures. Telecommunications site on the end of Cooks Rd (near Wakefield) is at risk with northerly wind.  Evacuations have occurred in the <ul style="list-style-type: none"> <li>• Eves Valley,</li> <li>• Golden Hills Rd,</li> <li>• Redwood Valley Rd</li> <li>• Mallings Rd</li> <li>• Greenacres Rd</li> </ul> We have confirmed records of 170 households evacuated. Evacuation of North and South Pigeon Valley, Teapot Valley, Eves Valley, Redwood Park, Malling Rd and Golden Hills Rd.  Notice of potential evacuations in place for Sunrise Valley (top end), Deepdale Rd (Upper Moutere).  Crews are working on most areas on the ground safely and are progressing fire containment due to more favourable weather conditions.		

Prepared by: [REDACTED]	Date:6 Feb2019	Time: 1500
-------------------------	----------------	------------

1. Pigeon Valley	2. 6 Feb2019 0700 to 1900
------------------	---------------------------

**7. Action taken**

14 Helicopters managed fire as requested throughout the day

Firebreaks being located to manage NNE wind change.

More predictable fire behaviour has made the fire ground more accessible for ground crews in particularly on the Northern front. These crews are being tasked with structure protection and controlling the fire when it has spotted onto grassland. Black out work has commenced in this area.

**8. Factors**

On Tuesday strong winds fanned the forest fire and the fire itself was creating its own extreme fire behaviour. Fire behaviour at night was still very active with highly flammable grass and scrubland carrying the fire. Wednesday morning brought a change in wind direction pushing the fire back into the burnt stand areas and changing fire fronts along with more benign fire behaviour from lower temperatures and higher RH.

Light winds and higher relative humidity have prevailed through the day enabling crews to move into direct attack.

**9. Predicted Incident Development**

The prevailing weather is supporting fire fighter activities with an increased in containment of existing fire lines. This will continue based on the forecast until unfavourable weather conditions occur. Significant reduction in the rate of spread due to current weather.

<b>10. Prepared by:</b> [REDACTED] <b>Authorised by</b> [REDACTED] (Incident controller)	<b>Date/Time</b> 16:30 6 <sup>th</sup> Feb 2019
---	---

# Incident Objectives<sub>RF202</sub>

### 3. Overall Incident Objectives

- Protect life (Public and Residents, firefighters)
- Protect Property
- Identify and keep stakeholders informed
- Ensure Firefighter Safety
- Identify and protect Critical Infrastructure
- Transition to NIMT using shadow process by 1500hrs
- Protect Other Assets (Forests, crop etc)
- Prepare for significant wind/weather change
- Containment lines constructed
  - All divisions maintain existing containment lines
  - Maintain patrols within divisional areas
  - Any flares ups as they occur.
- Contain then Extinguish fire

### 4. Objectives for specified Operational Period

- Protect life (Public and Residents)
- Identify and keep stakeholders informed
- Allow for Firefighter Safety
- Sectorise each divisional area
- Identify and protect Critical Infrastructure
- Protect property and critical infrastructure by establishing hard containment lines with heavy equipment or Identify opportunities for laying down retardant ahead of wind change to protect property/infrastructure
- Establish trigger points with 3hrs lead-time for evacuations

# Organisation List

RF203

3. Incident Control		Cell Phone	Radio Ch
Incident Controller	██████████ (Day)	██████████	
Deputy IC	██████████ (Night)		
Information Officer			
Safety Officer			
Liaison Officer			
4. Agency Representative		Cell Phone	Radio Ch
Lead Agency	CDEM	██████████	
Agency	Police ██████████ ██████████		
Agency	CDEM ██████████ CDEM Duty Phone		
Agency	FENZ Urban Liason ██████████ ██████████		
5. Planning/Intell Section		Cell Phone	Radio Ch
Planning/Intell Manager	██████████	██████████	
Situations Unit			
Resources Unit	██████████		
Management Support Unit			
Information Unit			
Advance Planning Unit			
Technical Specialists Unit	██████████		
6. Logistics Section		Cell Phone	Radio Ch
Logistics Manager	██████████		
Supply Unit			
Catering Unit			
Facilities Unit			
Finance Unit			

Communications Unit			
Welfare Unit	██████████ ██████████	██████████	
Medical Unit			
Ground Support Unit			

<b>7. Operations Section</b>	<b>Cell Phone</b>	<b>Radio Ch</b>
Operations Manager	██████████	
Deputy Operations Manager		
Division Pigeon Commander	██████████	
Division Hayton Commander		
Division Teapot Commander		
Division Redwood Commander		
Division Moutere Commander		
Division Two Commander		
Sector E Supervisor		
Sector F Supervisor		
Sector G Supervisor		
Sector H Supervisor		
Air Division Commander		
Air Attack Supervisor		
Air Support Supervisor		