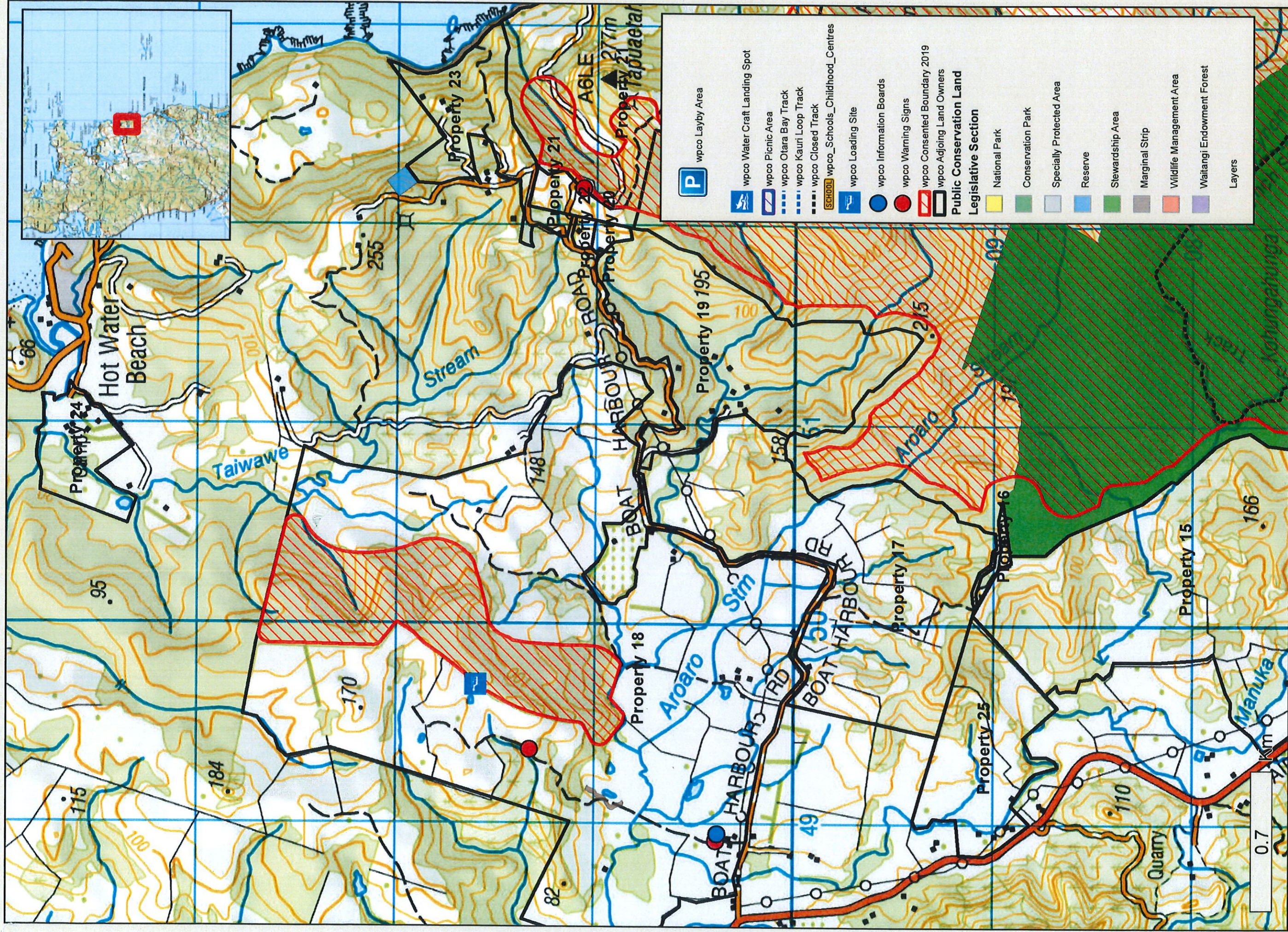


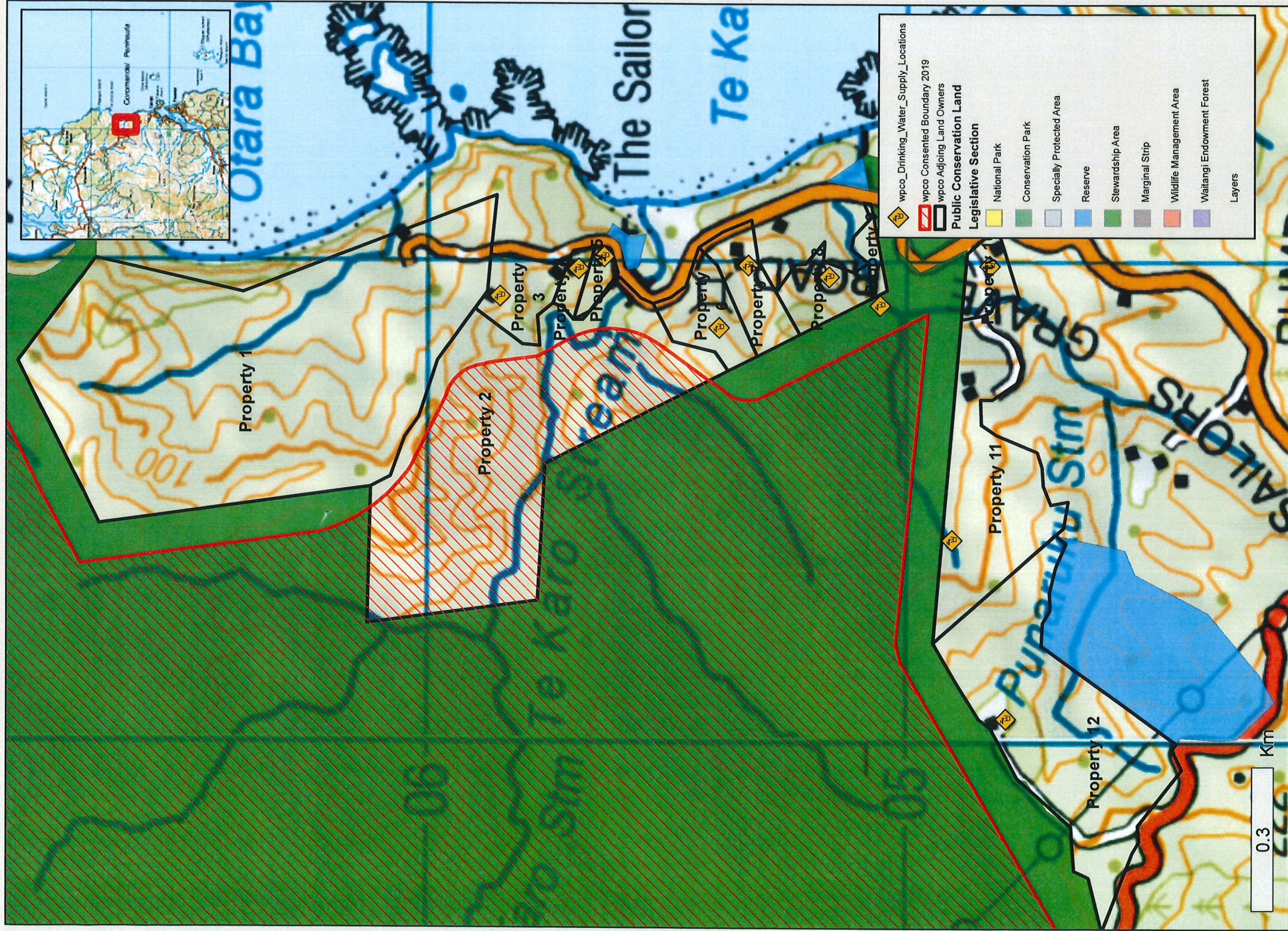
# Whenuakite Pest Control Operation 19/20 Attachment A - All

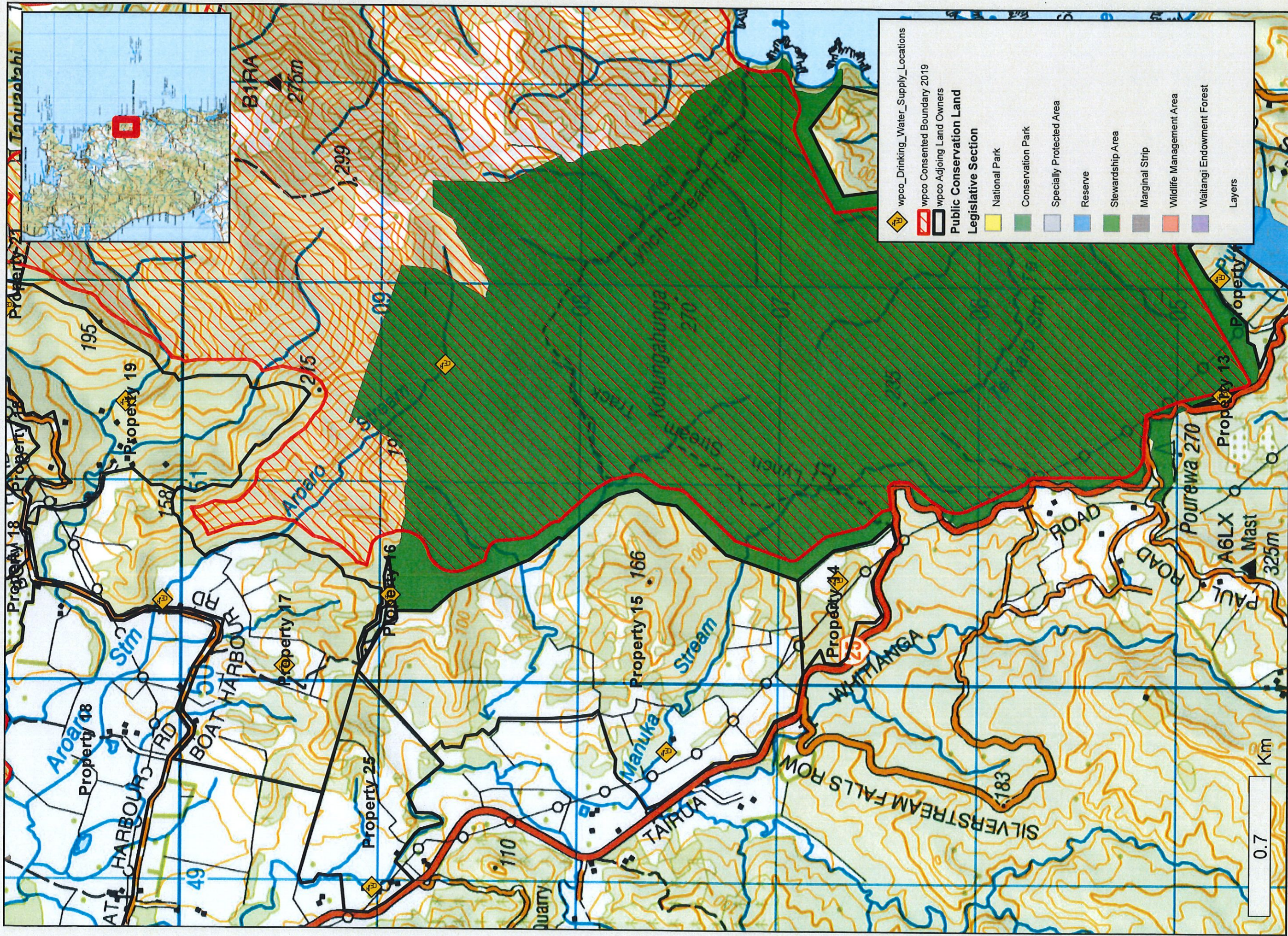




## Whenuakite Pest Control Operation 19/20 Attachment A - All

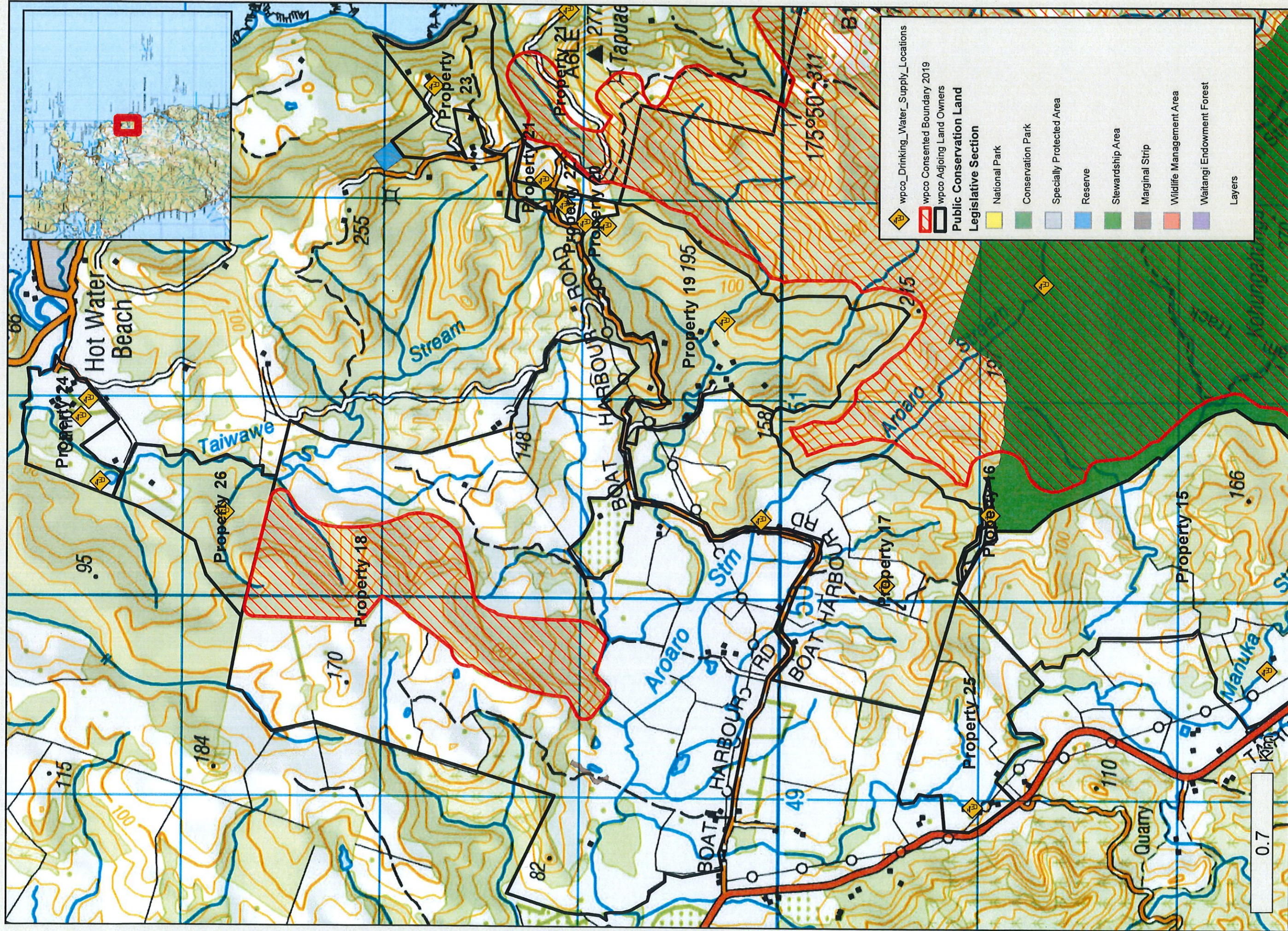






## Whenuakite Pest Control Operation 19/20 Attachment A - Water Supplies (2)





# Whenuakite Pest Control Operation 19/20 Attachment A - Water Supplies (3)

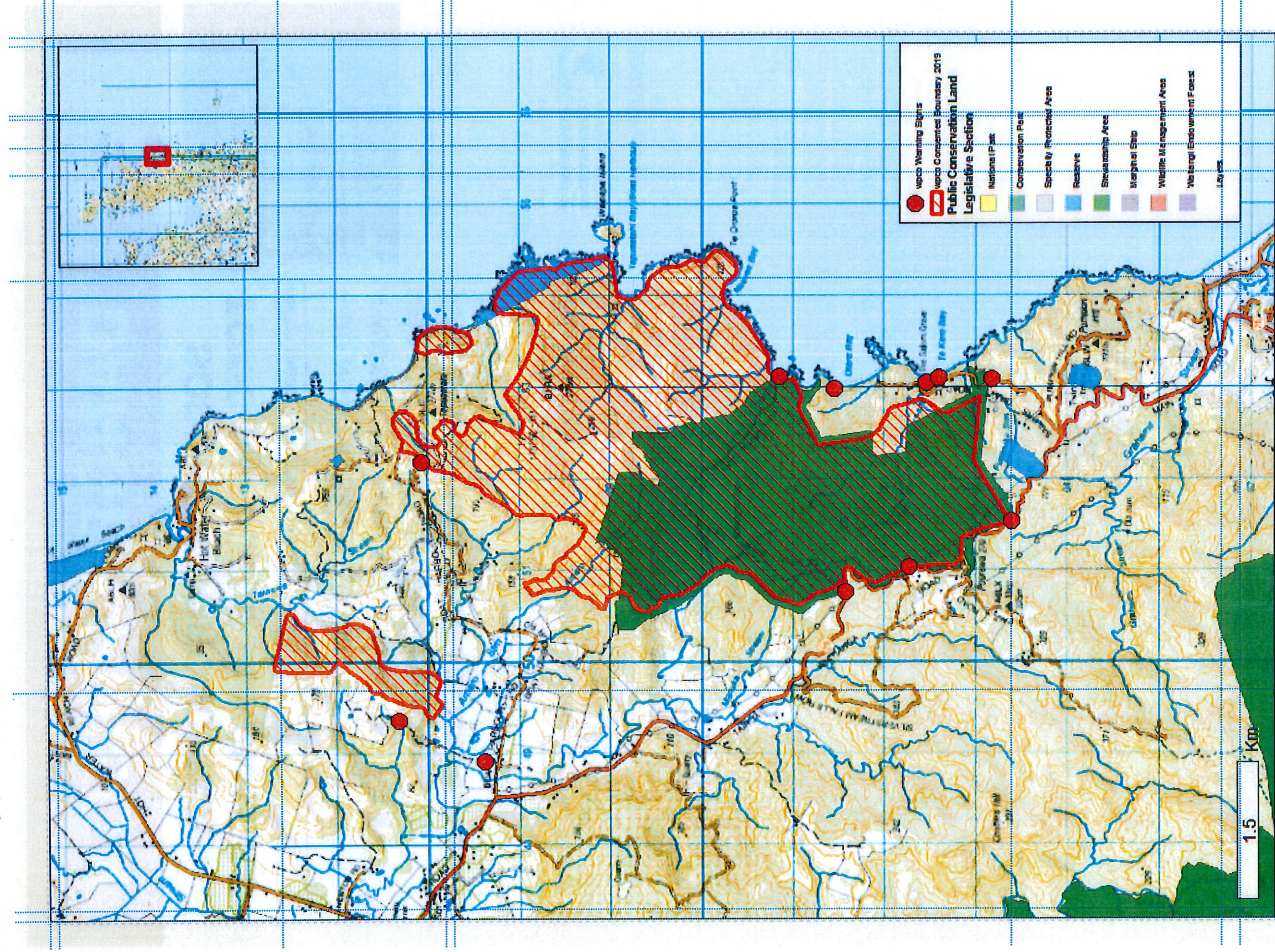
File path: C:\GIS\_Users\Hauraki\Data\Biodiversity\Animal\_Pests\Whenuakite\1080\Whenuakite Aerial Operation 19\_20.mxd

Attachment J – Whenuakite 2019

Areas to be inspected – **Nil**

Section not Required

Placement of Warning signs around Whenuakite

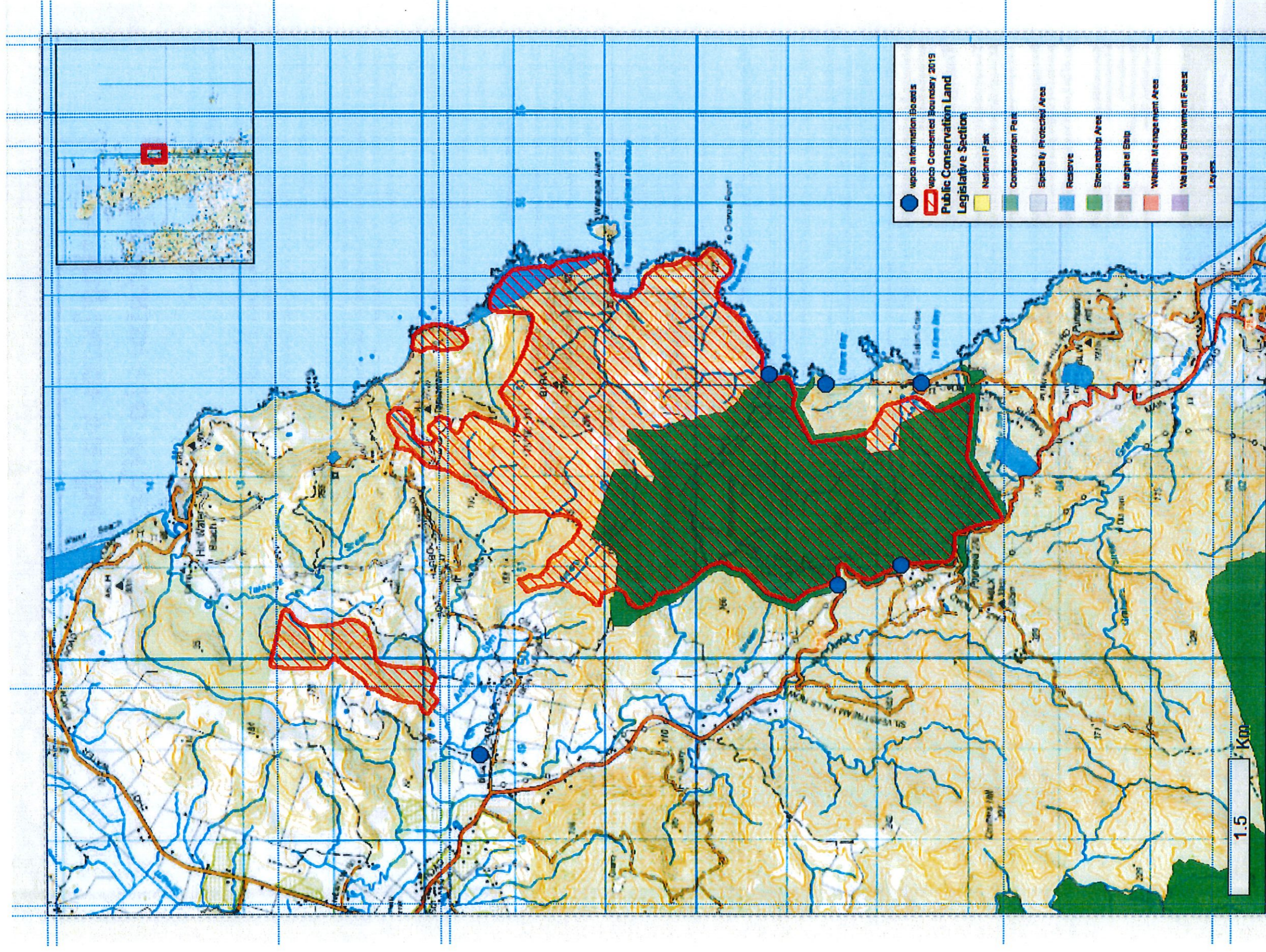


MSD: 2000 New Zealand Taxonomic Information  
 Not for publication nor navigation  
 Crown Copyright Reserved  
 1:50,000  
 NZTopo. © Crown  
 Produced by: rhamon on 10/10/2019

Whenuakite Pest Control Operation 19/20



File path: G:\Whenuakite Pest Control Operation 19\_20\GIS\Maps\Area\Whenuakite Aerial Operation 19\_20.mxd



# Whenuakite Pest Control Operation 19/20



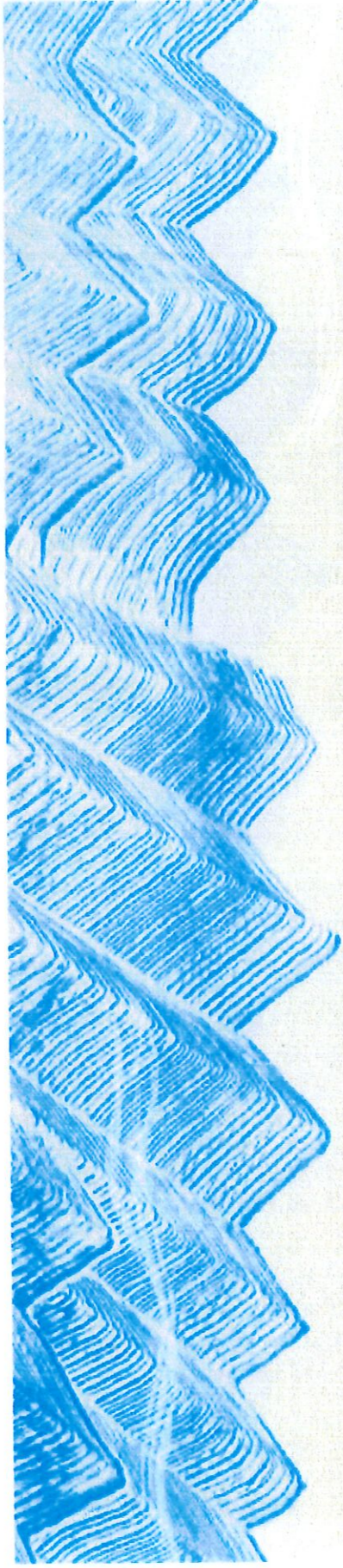
© Crown  
Produced by: rhamon on 10/10/2019

MSD 2000 New Zealand Topographic Information  
Not for publication nor navigation  
Crown Copyright Reserved  
460,000  
NZTopo © Crown  
Produced by: rhamon on 10/10/2019

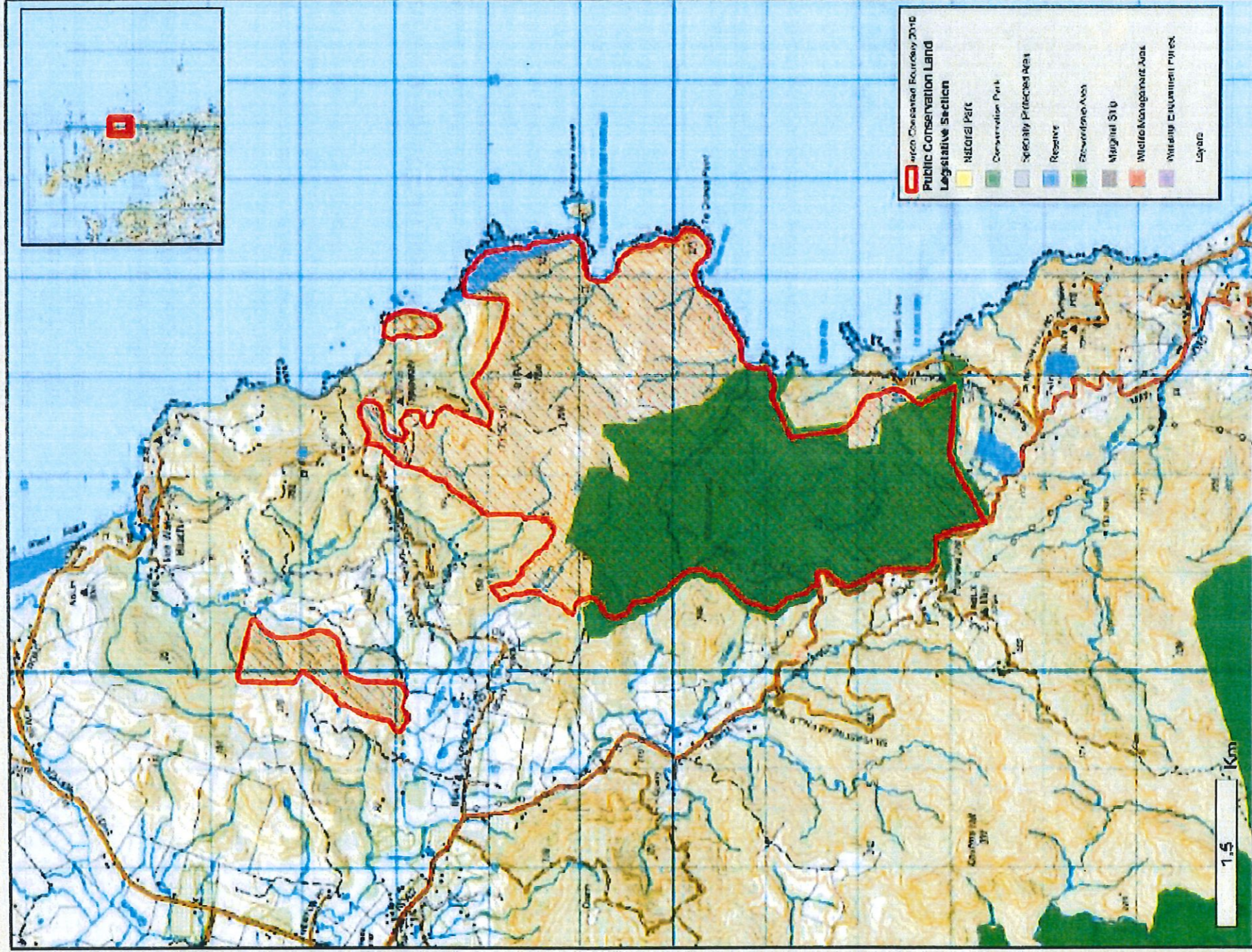
File path: G:\Whenuakite Pest Control Operation 19\_20\GIS\Maps\Area\Whenuakite Area Operation 19\_20.mxd



Map sent to Education providers (Second mail out)

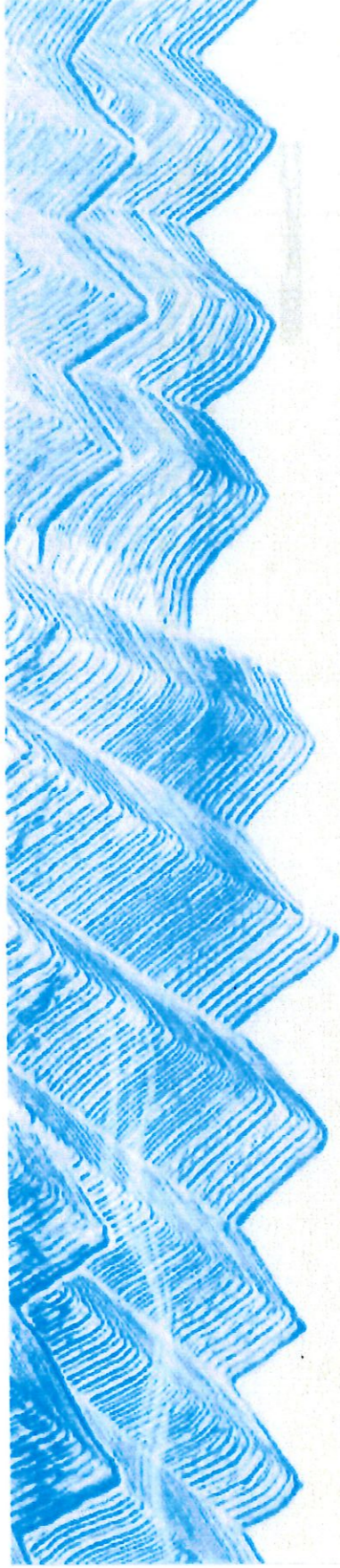


Whenuakite Pest Control Operation 19/20



Department of Conservation  
Hauraki Office  
PO Box 343  
Thames 3540  
New Zealand

October 2019  
Phone: +64 7 877 3180  
Email: [thames@doc.govt.nz](mailto:thames@doc.govt.nz)  
[www.doc.govt.nz](http://www.doc.govt.nz)



## Key facts:

# Protecting native species in Whenuakite

The Department of Conservation is undertaking pest control over approximately 1422 hectares in the Whenuakite Forest.

### Why are we undertaking pest control in the Whenuakite Block?

The Whenuakite block of Coromandel Forest Park is among the most valuable sites in New Zealand due to its mixture of mature coastal forest and younger regenerating trees. It also includes stands of kauri and threatened species such as the Coromandel brown kiwi of which there are just 900 pair left in the Coromandel Community groups, iwi and Waikato Regional Council all recognise the importance of this area and have contributed to conservation efforts since 2001.

The work of the Whenuakite Kiwi Care Group and a long running predator control programme has resulted in the recovery of many native bird species including the Coromandel brown kiwi, miromiro/tomtit, and kereru/ wood pigeon which our forests are dependent on for native seed dispersal. The continued recovery of native birds at Whenuakite is a key outcome of this operation.

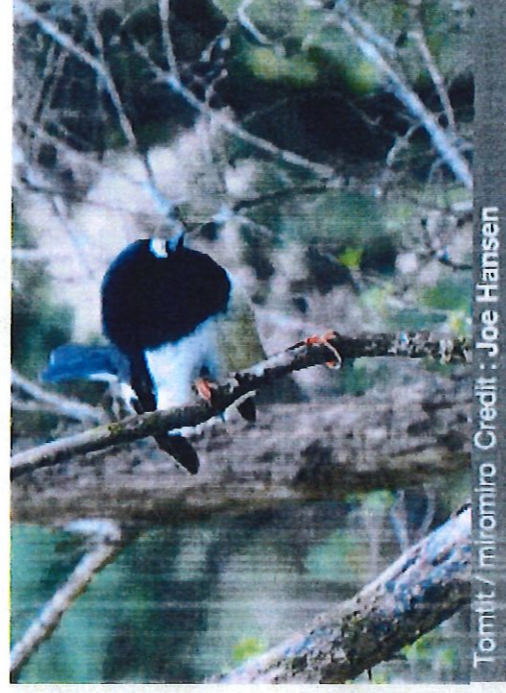
Rats are the most significant predator of small forest birds and threaten the long-term survival of some native species. Rats eat lizards, insects, eggs, young birds and a wide range of native fruits and other plant material. DOC's proposed control will reduce rat numbers sufficiently to protect native

species for one breeding season in three - enough to slowly increase bird numbers.

### What has been decided

To achieve recovery, we need a large reduction in rat numbers to allow more food to become available for our native fauna and allow for a higher success rate in fledging chicks.

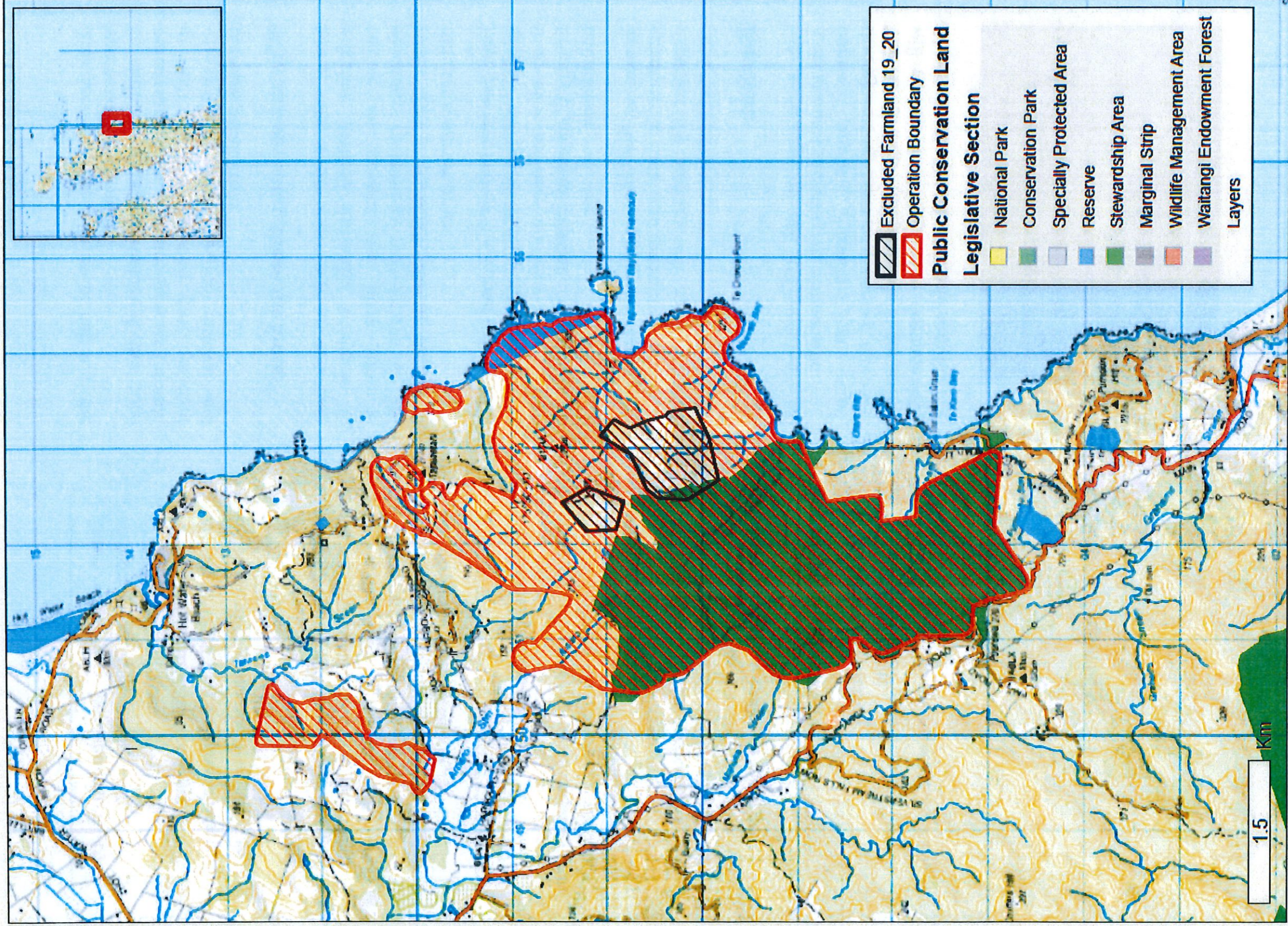
Cereal pellets containing bio-degradable sodium fluoroacetate, known as 1080, will be used to control the predators. Helicopters will distribute the pellets throughout the designated operational area.



Tomtit/ miromiro Credit : Joe Hansen



Department of  
Conservation  
*Te Papa Atawhai*



NZSIS © 2000 New Zealand Transverse Mercator  
Not for publication nor navigation  
Crown Copyright. Has been  
1:50,000  
NZTopo. © Crown  
Produced by: pic.kerning on 17/07/2019

## Whenuakite Pest Control Operation 19/20



File path: G:\GIS\_Utms\Natural\Output\od\vector\MapInfo\_Fields\Whenuakite\_1920\Whenuakite\_Aerial\_Operation\_19\_20.mxd

# Key facts about Whenuakite pest control 2019



## The Department of Conservation is undertaking pest control over approximately 1422 hectares in the Whenuakite Block.

### Why are we undertaking pest control in the Whenuakite Block?

The Whenuakite Block of Coromandel Forest Park is among the most valuable sites in New Zealand due to its mixture of mature coastal forest and younger regenerating trees.

Individuals, local community groups and regional council have all recognised the importance of this area and contributed to conservation efforts since 2001. The establishment of the Whenuakite Kiwi Care Group and a predator control programme has increased the profile and protection of native flora and fauna in this region.

Rats are the most significant predator of small forest birds and threaten the long-term survival of some native species. Rats eat lizards, insects, eggs, young birds and a wide range of native fruits and other plant material. DOC's proposed control will reduce rat numbers sufficiently to protect native species for one breeding season in three - enough to slowly increase numbers

### What has been decided

To achieve recovery, we need a large reduction in rat numbers and periodic control to allow more food to become available for our native fauna and allows for a higher success rate in fledging chicks.

Cereal pellets containing bio-degradable sodium fluoroacetate (known as 1080) are being used to control pests. Helicopters are being used to distribute the pellets through the operational area.

### Timing of the operation

The approved operation timeframe is between 14th September 2019 and 19th November 2019. The exact timing of the operation will be weather dependent and will consist of a nontoxic pre-feed, followed by a toxin drop.

Pest operations are timed for late winter and early spring when food sources for target pests are at their lowest.

Produced by:  
Department of Conservation  
Hauraki Area Office  
PO Box 343  
Thames 3540  
June 2019

**New Zealand Government**

**Department of  
Conservation**  
*Te Papa Atawhai*

NOTIFICATIONS

First Letter sent to Community Groups, Vets, Hunting Groups (30km from Whenuakite block) and used in the 3km mailbox drop -See full consultation plan for details



24 July 2019

XXXX  
XXXXX  
XXXXXX

Dear Sir/Madame

2019

I am writing to you regarding an aerial pest control operation on Public Conservation Land (PCL) and some adjoining private land at Whenuakite, to be delivered by the Department of Conservation in Spring 2019. If you have any concerns regarding the effects of this operation, please contact us.

Whenuakite site is a combination of PCL and private land containing rare coastal forest and large numbers of Coromandel brown Kiwi. Whenuakite has a very active community group who maintain groundwork with cat traps and a DOC 200 trapping network in between operations.

The Whenuakite Block was to be part of a bigger operation for the 19/20 year (Southern Forest). However, due to reallocation of funds by Tiakina Nga Manu (Battle for Our Birds) to the mega beech mast in the South Island, the funding for this larger operation was removed.

has decided to go forward with the smaller operation funded with a local budget. Due to the massive gains already achieved in this area, work could not be pushed out another 12 months.

Our focus is on improving forest health leading to an increase in native flora and fauna. We are also aiming to improve stream health.

The attached factsheet and website link provide further information, including a map of the operational area.

<https://www.doc.govt.nz/our-work/tiakina-nga-manu/>

We want to make you aware of the operation, if you would like to discuss further, please contact [redacted] at the [redacted]

Yours sincerely,

A handwritten signature in blue ink, appearing to be "I. A. A." or similar.

— Kaiarahi Koiora Rereketanga Morearea  
Department of Conservation—Te Papa Atawhai

Conservation for prosperity *Tiakina te taiao, kia puawai*  
[www.doc.govt.nz](http://www.doc.govt.nz)

# Key facts about Whenuakite pest control 2019



## **The Department of Conservation is undertaking pest control over approximately 1422 hectares in the Whenuakite Block.**

### **Why are we undertaking pest control in the Whenuakite Block?**

The Whenuakite Block of Coromandel Forest Park is among the most valuable sites in New Zealand due to its mixture of mature coastal forest and younger regenerating trees.

Individuals, local community groups and regional council have all recognised the importance of this area and contributed to conservation efforts since 2001. The establishment of the Whenuakite Kiwi Care Group and a predator control programme has increased the profile and protection of native flora and fauna in this region.

Rats are the most significant predator of small forest birds and threaten the long-term survival of some native species. Rats eat lizards, insects, eggs, young birds and a wide range of native fruits and other plant material. DOC's proposed control will reduce rat numbers sufficiently to protect native species for one breeding season in three - enough to slowly increase numbers

### **What has been decided**

To achieve recovery, we need a large reduction in rat numbers and periodic control to allow more food to become available for our native fauna and allows for a higher success rate in fledging chicks.

Cereal pellets containing bio-degradable sodium fluoroacetate (known as 1080) are being used to control pests. Helicopters are being used to distribute the pellets through the operational area.

### **Timing of the operation**

The approved operation timeframe is between 14th September 2019 and 19th November 2019. The exact timing of the operation will be weather dependent and will consist of a nontoxic pre-feed, followed by a toxin drop.

Pest operations are timed for late winter and early spring when food sources for target pests are at their lowest.

Produced by:  
Department of Conservation  
Hauraki Area Office  
PO Box 343  
Thames 3540  
June 2019

**New Zealand Government**

**Department of  
Conservation**  
*Te Papa Atawhai*

This increases the take up of bait and the success of the operation. In addition, hitting predators at this time reduces predation on native species through at least one and possibly two breeding seasons to improve nesting survival and increase populations.

### **Why are we using these methods?**

Aerial 1080 is the most efficient and cost-effective method currently available to reduce rat, possum and stoat (through secondary poisoning) populations to low levels. This is especially true in large and difficult to access areas.

Baits are applied by helicopter using GPS satellite navigation technology. This results in an even coverage and allows the pilot to be sure of the exact location of the operation boundaries.

Spreading the bait evenly increases the exposure to rats and possums and it is expected the majority will encounter and consume the bait.

### **Key facts**

The pesticides we use are poisonous to most animals, including to humans and domestic animals. Poisoning can occur through eating baits or poisoned animals. The risk to dogs with pesticide in carcasses will remain until they have decomposed, which can take from four to nine months.



These risks can be eliminated by following these simple rules:

- **DO NOT** touch bait
- **WATCH CHILDREN** at all times
- **DO NOT EAT** animals from this area
- Remember, poison baits or carcasses are **DEADLY to DOGS**

Observe these rules whenever you see warning signs about pesticides. Warning signs indicate that pesticide residues may still be present in baits or animals. When signs are removed, this means that you can resume activities as normal in the area. If in doubt, check with DOC.

### **Operational planning**

The use of toxins for this work requires the consent of the Medical Officer of Health and resource consent from the Waikato Regional Council.

DOC managers follow procedures and apply conditions to ensure that all legal and policy requirements are met, and that any potential risks are mitigated or managed.

### **For more information**

Visit the following website:  
[www.doc.govt.nz/1080](http://www.doc.govt.nz/1080)

If you would like more information, contact:

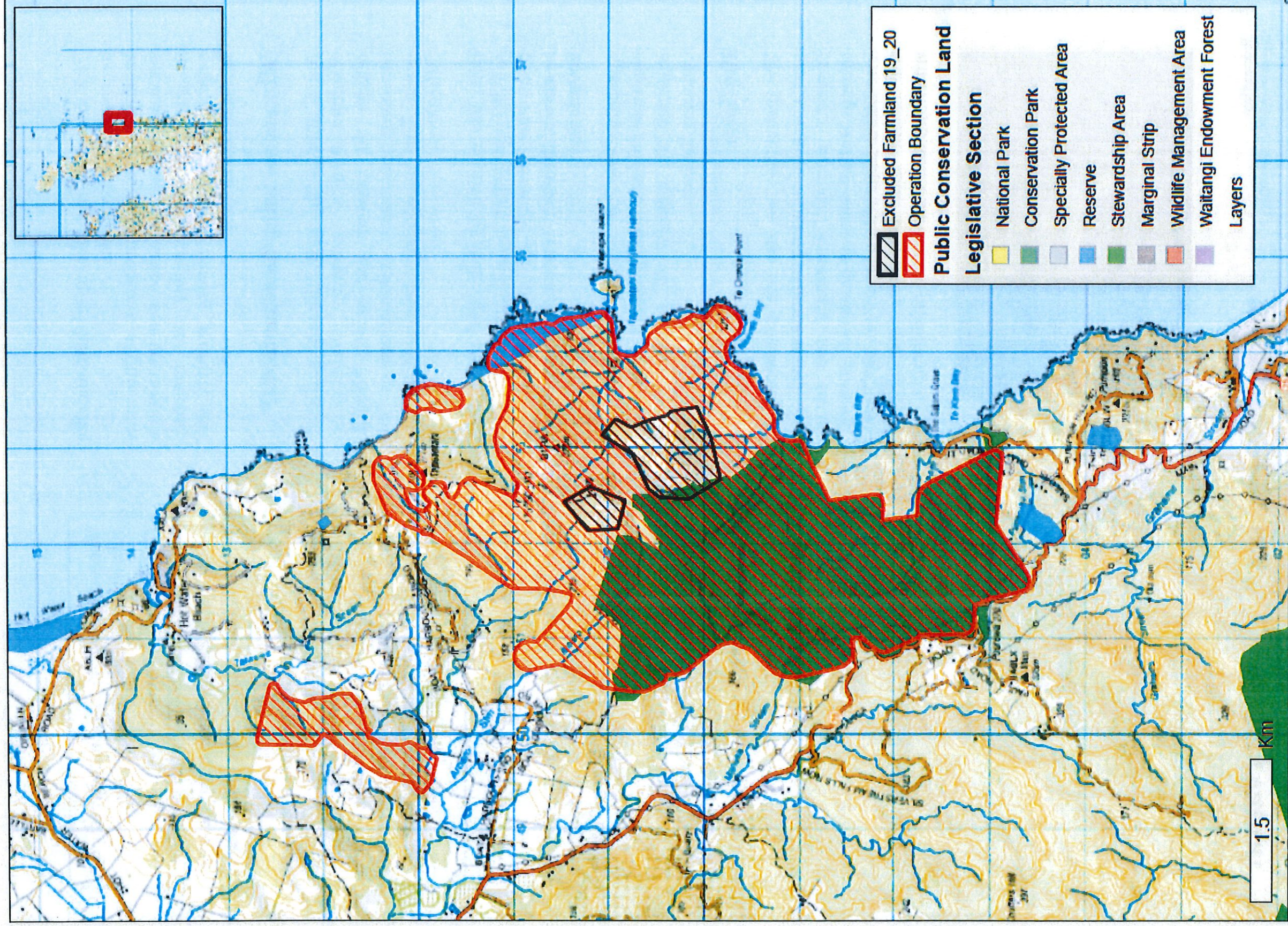
Leon Pickering  
Department of Conservation  
Hauraki Office  
Thames  
T: 07 867 9180  
E: [lpickering@doc.govt.nz](mailto:lpickering@doc.govt.nz)

Produced by:  
Department of Conservation  
Hauraki Area Office  
PO Box 343  
Thames 3540  
June 2019

**New Zealand Government**

**Department of  
Conservation**  
*Te Papa Atawhai*

Map sent to Community Groups, Vets, Hunting Groups and used in the 3km mailbox drop - See full consultation plan for detail (First mail out)



NZS D 2000 New Zealand Transverse Mercator  
 Not for publication nor navigation  
 Crown Copyright Reserved  
 1:50,000  
 NZTopo, © Crown  
 Produced by: ipc.laning on 17/07/2019

## Whenuakite Pest Control Operation 19/20



Department of Conservation  
 Te Papa Ihouwhiri  
 New Zealand Government

File path: G:\GIS\_Users\Huihua\MapData\Biodiversity\Aerial\_Fields\Whenuakite\_Aerial\_Operation\_19\_20.mxd



stuff

CUSTOMER DEPARTMENT OF CONSER-  
advert ID: AU-846197SAA (98%)  
booked size MIX8  
dimensions 25.4X36.6, cms width by height

PUBLISHING 0602179  
publication HAURAKI HERALD  
section RUN OF PRESS  
printed 30-Jul-19 10:01:33 PM

advertisingproof

Please check your proof carefully and approve it or submit corrections by the Final Proof Alterations deadline.

You can now approve or submit changes to your ad within the ATOL system at a time that suits you. Just follow the link in your ad proof email to view your ad, then click the APPROVE or CORRECTIONS button from there - no new emails required!



# Key facts about Whenuakite Aerial operation 2019

## The Department of Conservation is undertaking pest control on 1422 hectares in Whenuakite.

### Why are we undertaking pest control in the Whenuakite?

The Whenuakite Block of Coromandel Forest Park is among the most valuable sites in New Zealand due to its mixture of mature coastal forest and younger regenerating trees.

Individuals, local community groups and regional council have all recognised the importance of this area and contributed to conservation efforts since 2001. The establishment of the Whenuakite Kiwi Care Group and a predator control programme has increased the profile and protection of native flora and fauna in this region.

Rats are the most significant predator of small forest birds and threaten the long-term survival of some native species. Rats eat lizards, insects, eggs, young birds and a wide range of native fruits and other plant material. DOC's proposed control will reduce rat numbers sufficiently to protect native species for one breeding season in three – enough to slowly increase numbers.

### What has been decided?

To achieve recovery, we need a large reduction in rat numbers and periodic control to allow more food to become available for our native fauna and allows for a higher success rate in fledging chicks.

Cereal pellets containing biodegradable sodium fluoroacetate (known as 1080) are being used to control pests. Helicopters are being used to distribute the pellets through the operational area.

### Timing of the operation

The approved operation timeframe is between 14th September 2019 and 19th November 2019. The exact timing of the operation will be weather dependent and will consist of a nontoxic pre-feed, followed by a toxin drop.

Pest operations are timed for late winter and early spring when food sources for target pests are at their lowest. This increases the take up of bait and the success of the operation.

### Key facts

The pesticides we use are poisonous to most animals, including to humans and domestic animals. Poisoning can occur through eating baits or poisoned

animals. The risk to dogs with pesticide in carcasses will remain until they have decomposed, which can take from four to nine months.

Risks of accidental poisoning can be eliminated by following these simple rules:

**DO NOT** touch bait  
**WATCH CHILDREN**

at all times

**DO NOT EAT** animals from this area

Remember, poison baits or carcasses are **DEADLY** to **DOGS**

Observe these rules whenever you see warning signs about pesticides. Warning signs indicate pesticide residue may still be present in baits or animals.

**Why are we using these methods?**  
Aerial 1080 is the most efficient and cost-effective method currently available to reduce rat, possum and stoat (through secondary poisoning) populations to low levels. This is especially true in large and difficult to access areas.

Baits are applied by helicopter using GPS satellite navigation technology. This results in an even coverage and allows the pilot to be sure of the exact location of the operation boundaries.

Spreading the bait evenly increases the exposure to rats and possums and it is expected the majority will encounter and consume the bait.

### Operational planning

The use of toxins for this work requires the consent of the Medical Officer of Health and resource consent from the Waikato Regional Council.

DOC managers follow procedures and apply conditions to ensure that all legal and policy requirements are met, and any potential risks are mitigated or managed.

### For more information

Visit the following websites:

[www.doc.govt.nz/1080](http://www.doc.govt.nz/1080)

[www.doc.govt.nz/hattlefourbirds](http://www.doc.govt.nz/hattlefourbirds)

If you would like more information contact:

Leon Pickering or Nicholas Hamon  
Department of Conservation  
Hauraki Office  
Thames

T: 07 867 9180

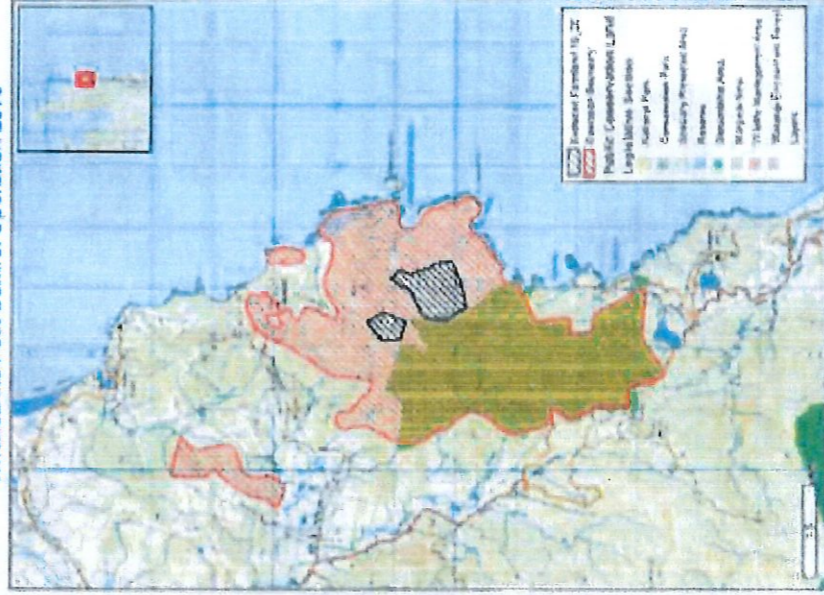
F: 07 867 9181

E: [nhamon@doc.govt.nz](mailto:nhamon@doc.govt.nz) or

[lpickering@doc.govt.nz](mailto:lpickering@doc.govt.nz)



Whenuakite Pest Control Operation 2019



Produced by:  
Department of Conservation  
PO Box 343  
Thames  
July 2019

# Nesting birds on the menu for predators in Whenuakite

## Why are we undertaking predator control in the Whenuakite?

The Whenuakite block of the Coromandel Forest Park is one of the most valuable sites in New Zealand for its mature coastal forest and younger regenerating trees including lauri. It is home to Coromandel brown kiwi, kererū and tōmōti/mōmōino and rīkamaru/whipounamu, among other native bird species.

Community groups, iwi and Waikato Regional Council all recognise the importance of this area and have contributed to conservation efforts since 2001. The establishment of the Whenuakite Kiwi Care Group and a predator control programme have increased the profile and protection of native flora and fauna in this region.

Rats are the most significant predators of small forest birds and threaten their long-term survival. Rats also eat lizards, insects, eggs, young birds and a wide range of native fruits and berries. Stoats are an important bykill of the operation and will lead to more kiwi chicks surviving.

## What has been agreed?

To achieve recovery of these unique native birds, we need a large reduction in rat numbers and periodic control to make more food available for our native fauna, and achieve a higher success rate in fledging chicks.

Cereal pellets containing bio-degradable sodium fluoroacetate (known as 1080) are being used to control predators. DOC uses a range of predator control tools on public conservation land including trapping however aerial 1080 is currently the most effective and efficient method to knock back predators on areas such as the 1422ha Whenuakite block.

Helicopters are being used to distribute the bait pellets throughout the operational area.

## Why are we using these methods?

Aerial 1080 is the most efficient method currently available to reduce rat, possum and stoat (through secondary poisoning) populations to low levels. This is especially true in large and hard-to-reach areas.

Our helicopters use GPS satellite navigation technology. This results in even coverage and allows the pilot to be sure of the exact location of the operation boundaries.

Spreading the baits evenly increases their exposure to rats and possums. It is expected that most of them will encounter and consume the bait.

## Timing of the operation

The operation is scheduled between 14 October and 19 November 2019, although the exact timing of the operation depends on the weather.

The operation consists of a non-toxic pre-feed, followed by a toxin drop.

Pest operations are timed for late winter and early spring when food sources for target predators are at their lowest. This increases the take up of bait and the success of the operation.

### If you would like more information contact:

Leon Dickelberg  
Department of Conservation  
Hauauraki Office, Timaru  
leondick@doc.govt.nz

### Prepared by:

Department of Conservation  
PO Box 348  
Timaru  
September 2019



## Operational planning

The use of toxins for this work requires the consent of the Medical Officer of Health.

DOC managers follow procedures and apply conditions to ensure that all legal and policy requirements are met, and any potential risks are mitigated or managed.

## Important safety information

The toxins we use are poisonous to humans and most animals, including domestic pets. Poisoning can occur if baits or poisoned animals are eaten. The risk to dogs of pesticide in carcases remains until carcases have decomposed (from four to nine months).

Risks of accidental poisoning can be eliminated by following these simple rules:

### Do not touch bait

### Watch children at all times

### Do not eat animals from this area

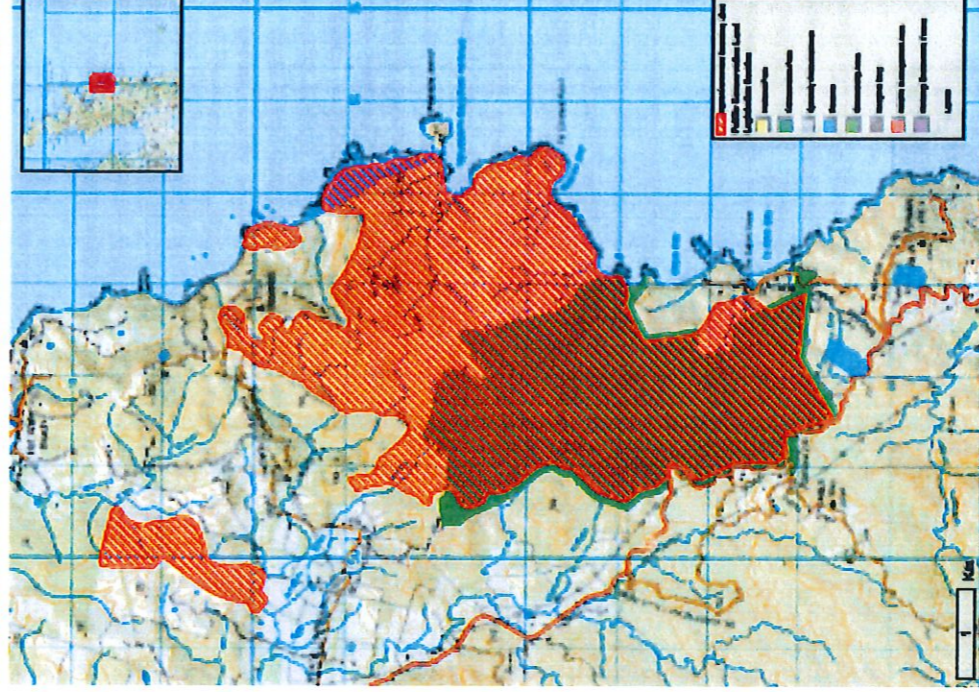
### Keep dogs on leads

Observe these rules whenever you see warning signs about toxins. Warning signs indicate toxin residues may still be present in baits or animals.

### For more information visit

[www.doc.govt.nz/1080](http://www.doc.govt.nz/1080)  
[www.doc.govt.nz/biabinangimamu](http://www.doc.govt.nz/biabinangimamu)

## Whenuakite Predator Control Operation 2019



Department of Conservation  
Te Papa Ataurangi

# Booking Summary

**Booking #11266509** Account: **MM3348002**  
**Publication: Coastal News** Department of Conservation  
**Classification: Public Notices 535** Waikato  
**Style: Space Booking Semi** Ph. 07 858 1562  
**Size: 37 x 4**  
**Line Count: 1**  
**Run Schedule: TCN:17Oct2019**

**Booking Price: \$402.50**  
**Amount Paid: \$0.00**  
**Amount Owing: \$402.50**

Runs	Publication	Classification	Price
------	-------------	----------------	-------

Thursday, 17 October 2019	Coastal News	Public Notices 535	\$402.50
---------------------------	--------------	--------------------	----------