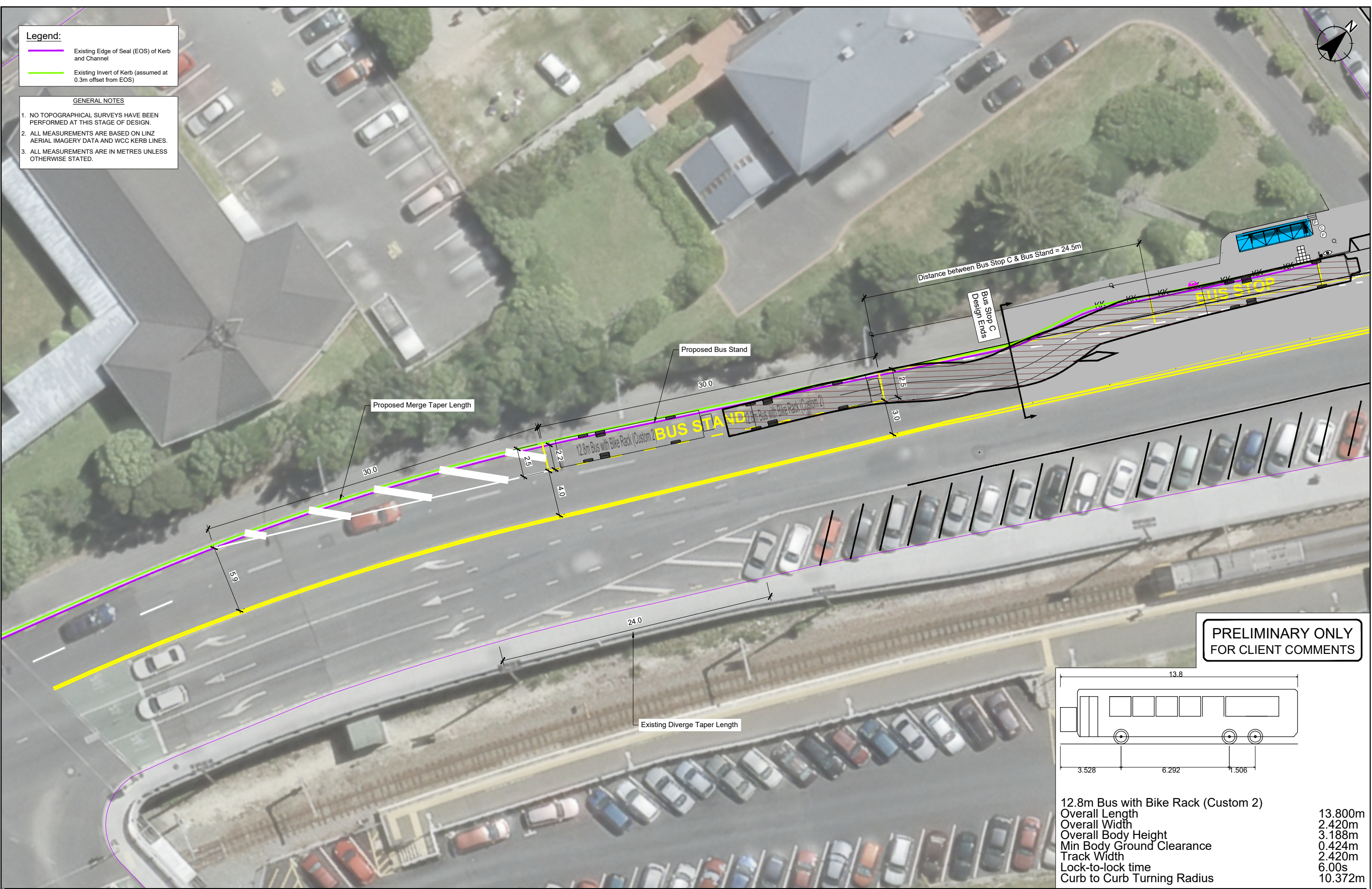
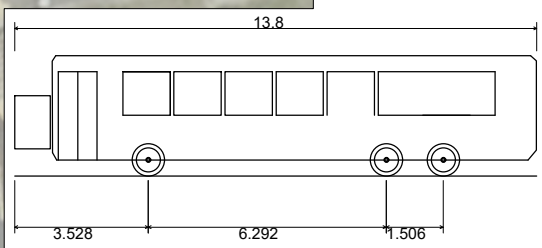


- Legend:**
- Existing Edge of Seal (EOS) of Kerb and Channel
  - Existing Invert of Kerb (assumed at 0.3m offset from EOS)

- GENERAL NOTES**
- NO TOPOGRAPHICAL SURVEYS HAVE BEEN PERFORMED AT THIS STAGE OF DESIGN.
  - ALL MEASUREMENTS ARE BASED ON LINZ AERIAL IMAGERY DATA AND WCC KERB LINES.
  - ALL MEASUREMENTS ARE IN METRES UNLESS OTHERWISE STATED.



**PRELIMINARY ONLY  
FOR CLIENT COMMENTS**



**12.8m Bus with Bike Rack (Custom 2)**

Overall Length	13.800m
Overall Width	2.420m
Overall Body Height	3.188m
Min Body Ground Clearance	0.424m
Track Width	2.420m
Lock-to-lock time	6.00s
Curb to Curb Turning Radius	10.372m

	0 PRELIMINARY ISSUE	DS	20.11.19	App	Date	Approved	DS	11/19
	Revision	App	Date	Approved	DS	11/19		
	Designed	SM	10/19					
	Drawn	SM	10/19					
	Reviewed	DS	11/19					

Client



Project Title  
GWRC - Bus Hubs

Sheet Title  
Johnsonville Bus Stand  
Option 1

Level 13  
Kordia House  
109-125 Willis Street  
Wellington 6011  
+64 4 384 2029  
calibregroup.com



Scale (A1 Original)	1:150	(A3)	1:300
Project No	710613	Sheet	B-C30
Revision			0