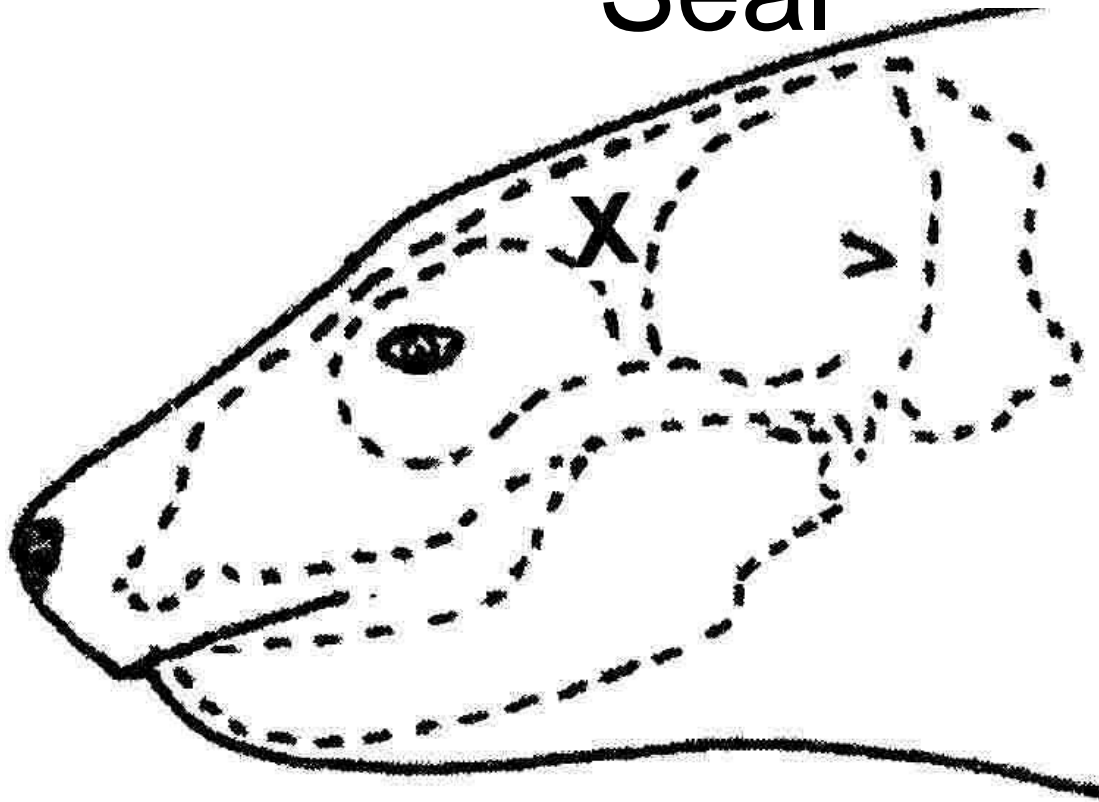


Seal



Target area for seal euthanasia: Target area may be accessed by a shot fired dorso-ventrally (from above). Target area indicated by X

Pilot Whale

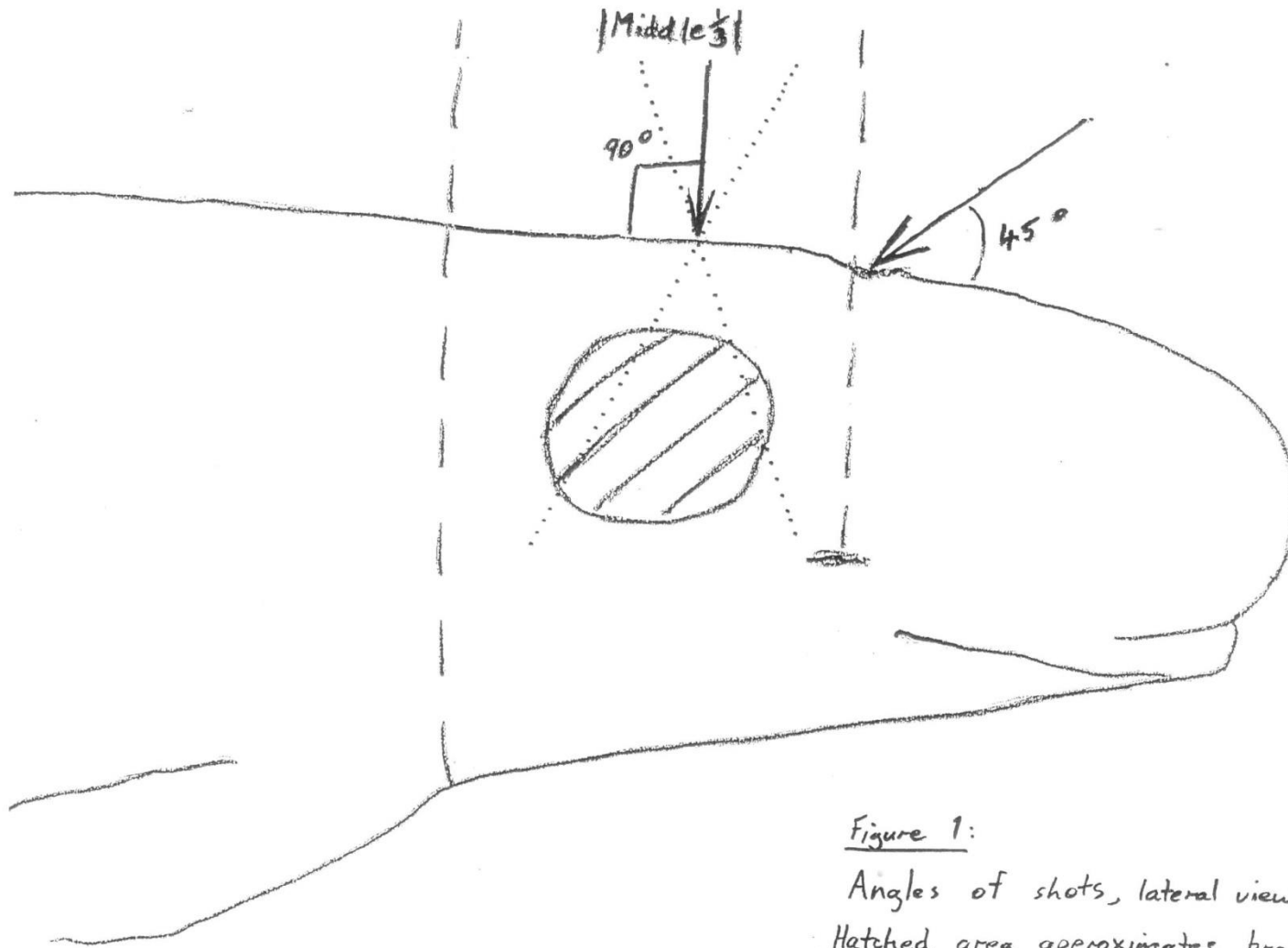


Figure 1:

Angles of shots, lateral view

Hatched area approximates brain position
Dotted lines shows margin for error.

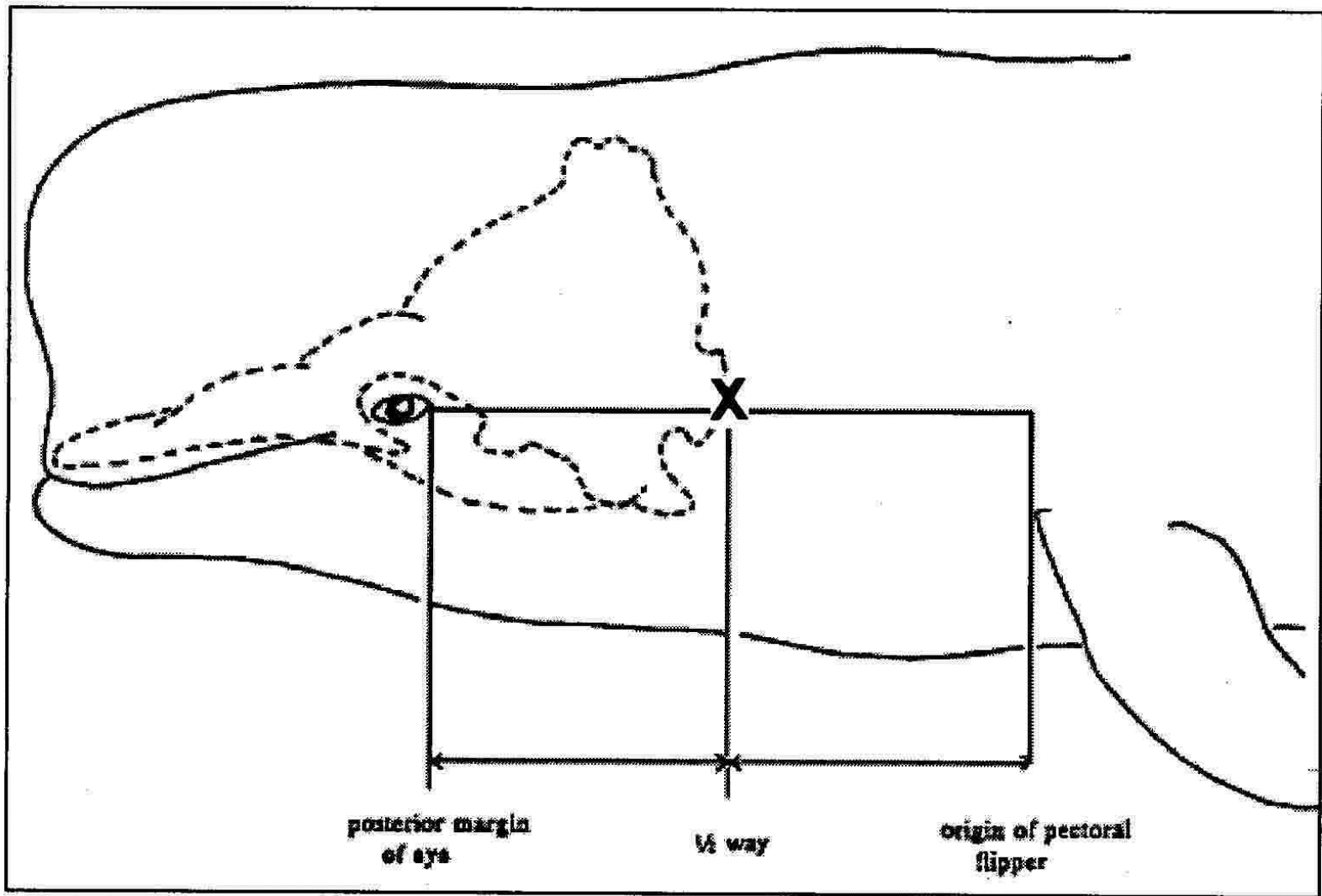
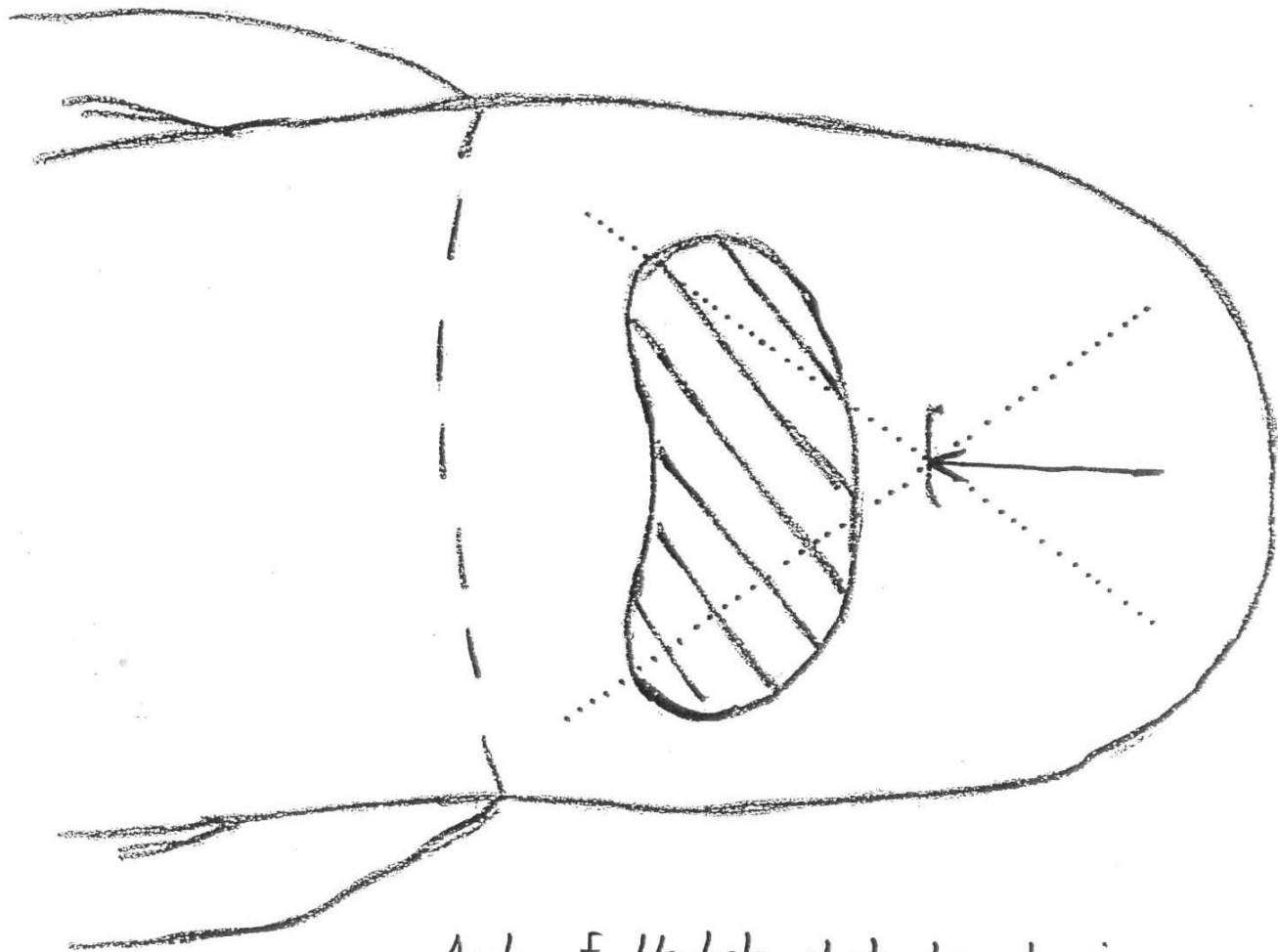
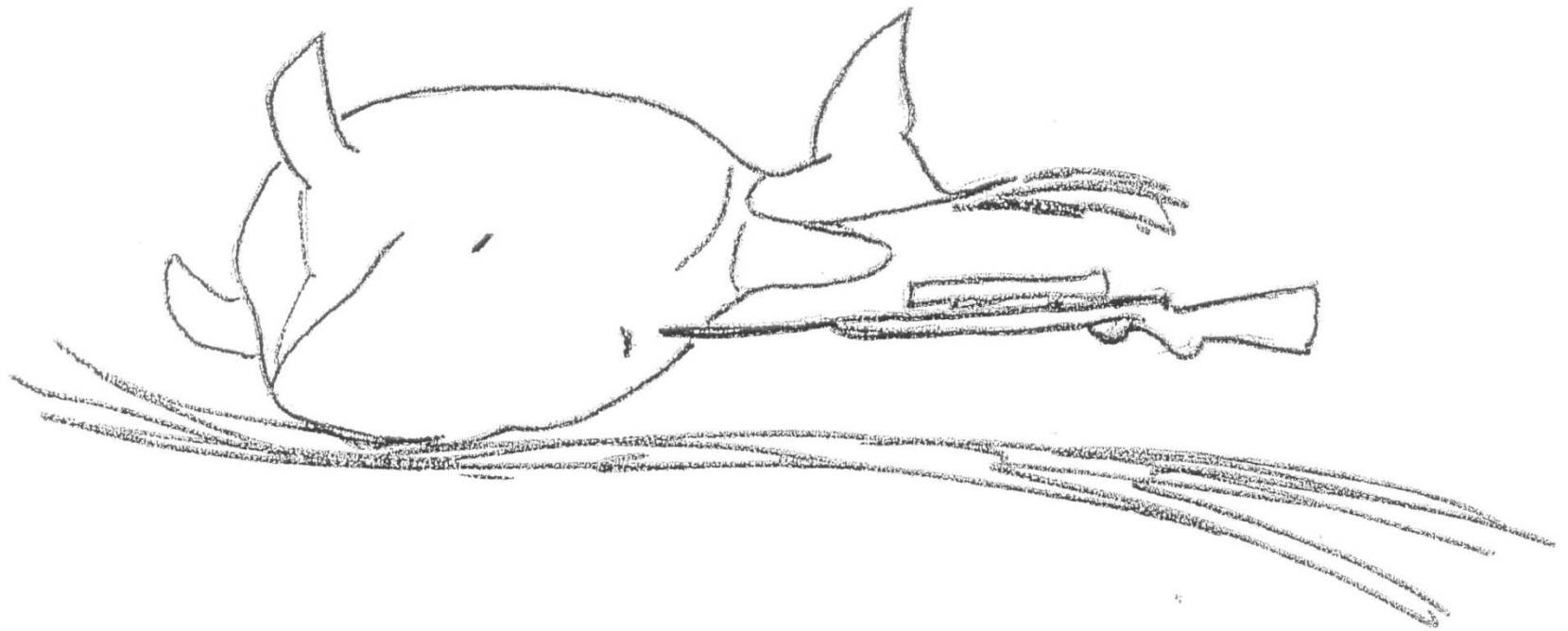


Fig. 4. Target area for shooting stranded whales: Target area may be accessed by a shot fired dorso-ventrally (from above or below), or laterally (from the side). Target area (occipital condyles) indicated by X



Angle of blowhole shot, dorsal view.
Hatched area approximates brain position.
Dotted lines show margin for error.

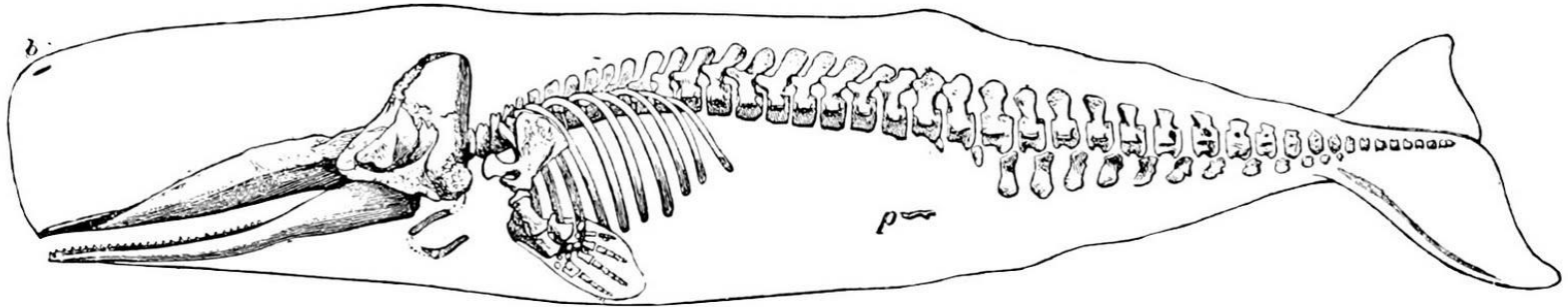
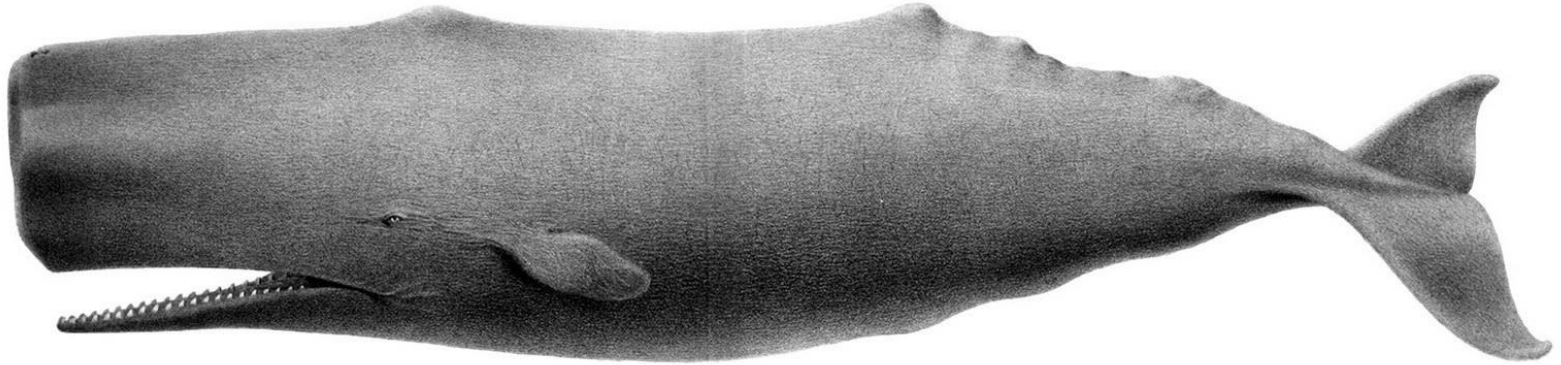
Pilot whale side on



Rifle position for right angle shot of a whale lying on its side. Care must be taken if this is in the surf zone!

ORCA

Sperm whale



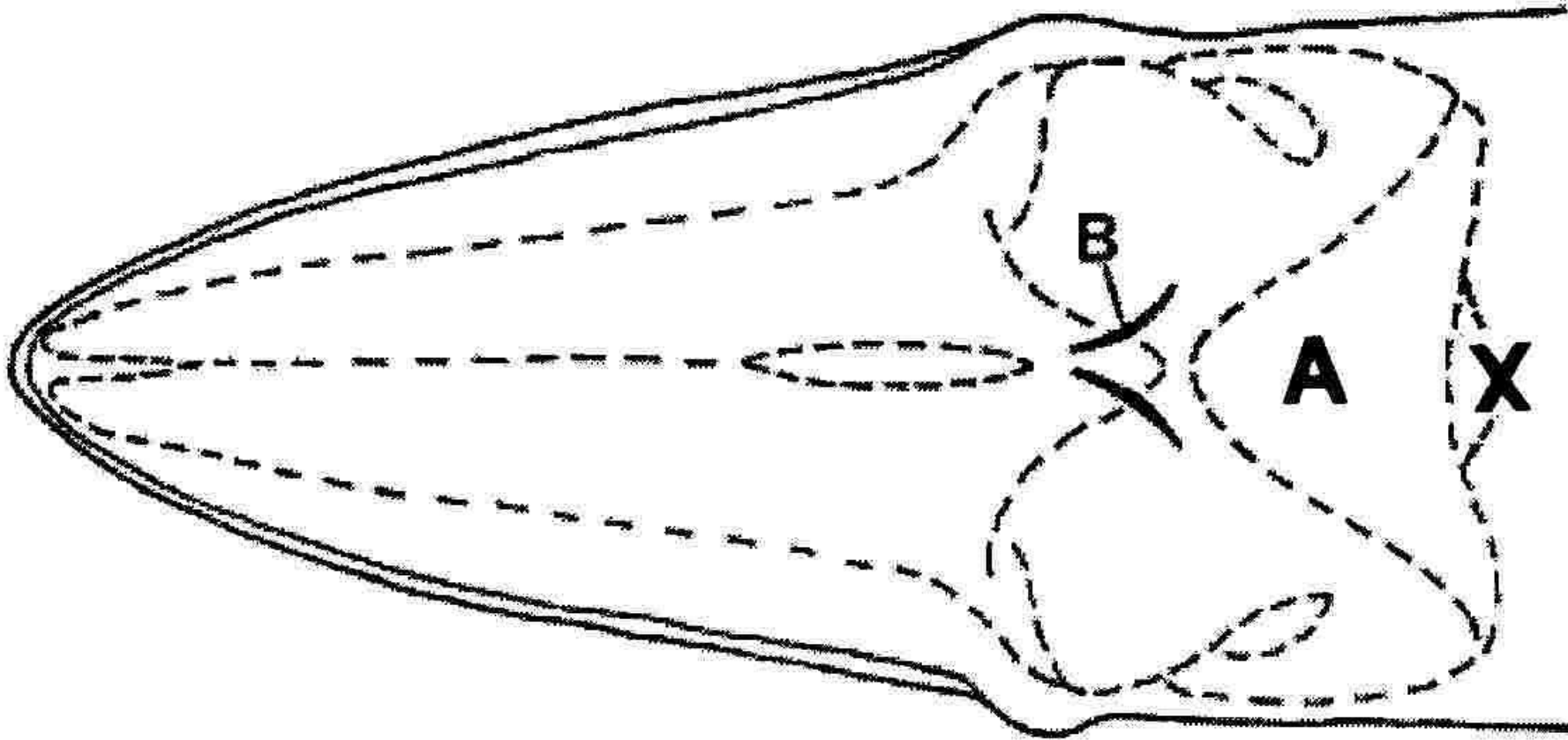


Fig. 5. Alternative target area for shooting baleen whales: diagram of the dorsal view of the head of a generalised roqual (i.e. Bryde's, sei, minke, fin, blue or humpback whales) showing position of the brain case (A) relative to the blowholes (B). Target area (occipital condyles) indicated by X, generally a hands span behind the blowhole.