

1. Incident Name Pukaki Downs Fire	2. Operational Period Date 31 st August 2020 Time 1900hrs	SITUATION REPORT RF201
3. Location Twizel	4. Vegetation Forest/Scrub/Grass/Slash/ Other:	
6. Assessment Fire started in the vicinity of the confluence of the Gladstone and Twizel Rivers along Baikie Hut track approximately 11.25am and spread rapidly through a mix of tussock grass and wilding pine fuels. There are 8 significant residential properties, with multiple structures, affected on the east side of SH80. One house has been lost, along with a barn and four small outbuildings. Currently carrying out property protection using ground crews supported by tankers. Pukaki Scientific Reserve has been extensively damaged. The fire has continued to spread overnight. Perimeter is approximately 25km and total area of incident ground is 3163ha		
7. Action taken Multiple ground crews were tasked to work on structure protection and evacuate properties. Air resources worked on the flanks and structure protection when required. Heavy machinery engaged to create fire breaks in suitable places around the perimeter. Crews patrolled and worked on structure protection overnight. Fire break construction on the northern end of the fire has established extra contingency lines beyond the fire edge. Five excavators and two bulldozers have worked all day today to reinforce and extend the fire breaks. Contact has been made and will continue with stakeholders, Landowners, Iwi, Police, LINZ, MPI, MSD DOC, NEMA, Meridian and Netcon. Managed and supervised access to properties for residents has been organised and will be implemented through the afternoon if conditions allow. Coastguard are on site to provide support on the lake front around the areas where helicopters are dipping. Affected property meeting planned occurred at 11.00hrs. Residents were escorted in to four properties to allow them to get personal items, check on livestock, and assess damage this afternoon. Infra Red camera was flown over the fire ground to check around the perimeters of each dwelling. A fire investigator, John Foley, has been appointed and will be arriving today.		

8. Factors

- Extreme fire behaviour occurring and expected to continue today.
- Power grid control gate 18 threatened. This was potential to have significant effect on supply of power to whole of South Island. Retardant has been put around the gate 18 structures for protection.
- Powerlines along SH80 are severely damaged. Lines crews have assessed them and are looking at repair options.
- SH80 – link to Aoraki Mt Cook and will remain closed overnight
- A convoy will be established to escort vehicles in and out of Mt Cook village at set times to allow residents and essential services to reach the village
- SH8 – Now open
- Prime assets – lavender farm and structures
- DOC estate
- Patchy areas within fire area remain unburnt

9. Predicted Incident Development

The fire will continue to burn in heavy wilding pine fuels under strong winds and potentially extreme fire behaviour conditions. Crews will continue to work on protection of structures.

43% of the perimeter has been confirmed as contained.

Overnight rain and colder weather tomorrow should dramatically reduce fire behaviour allowing

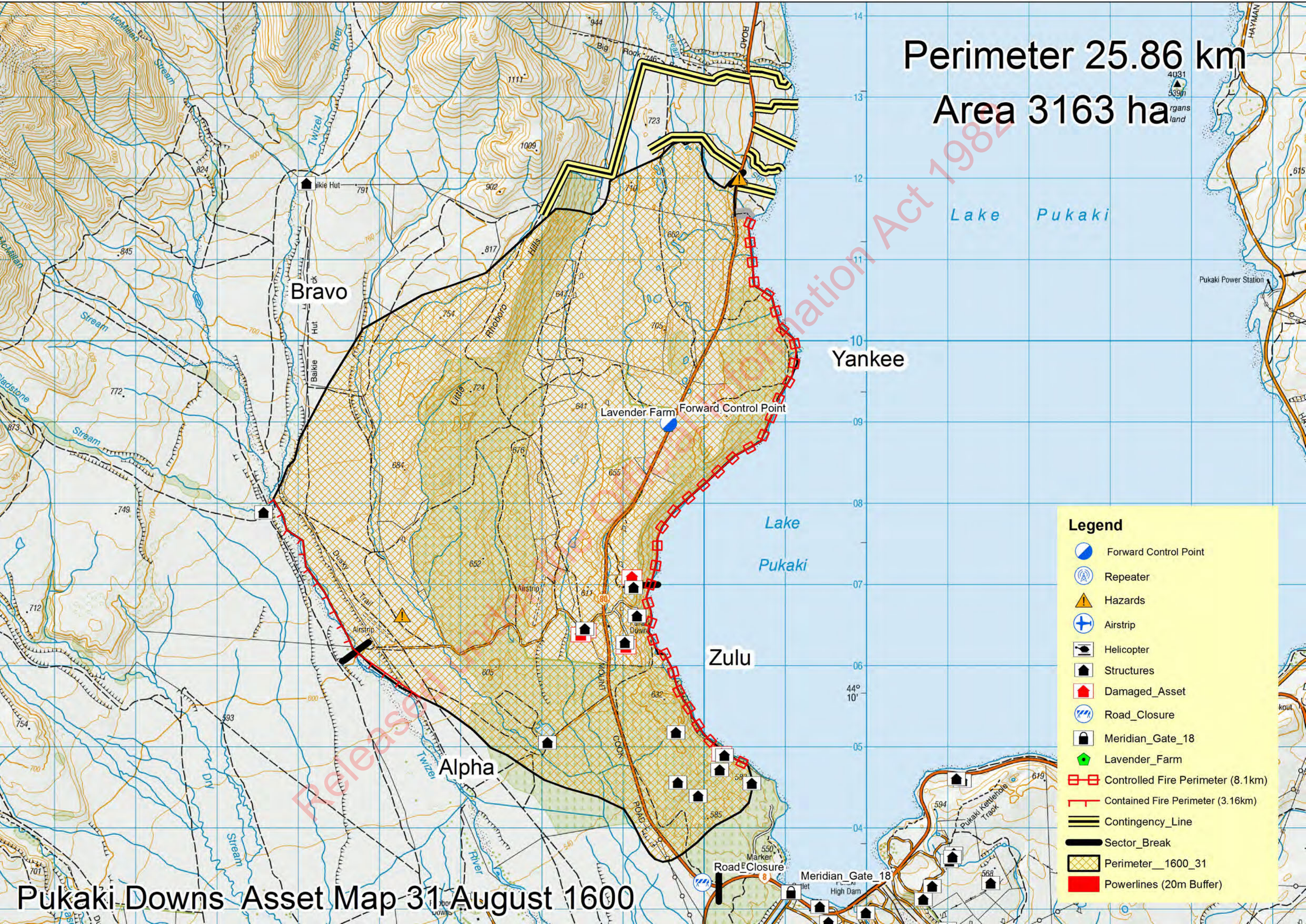
Multi day mop-up and containment using helicopters, heavy machinery and ground crews

10. Prepared by: [REDACTED]

Date/Time 31-8-20 1900hrs

Released under the Official Information Act 1982

Perimeter 25.86 km
Area 3163 ha



- Legend**
- Forward Control Point
 - Repeater
 - Hazards
 - Airstrip
 - Helicopter
 - Structures
 - Damaged_Asset
 - Road_Closure
 - Meridian_Gate_18
 - Lavender_Farm
 - Controlled Fire Perimeter (8.1km)
 - Contained Fire Perimeter (3.16km)
 - Contingency_Line
 - Sector_Break
 - Perimeter_1600_31
 - Powerlines (20m Buffer)

Pukaki Downs Asset Map 31 August 1600