

1. Incident Name Pukaki Downs Fire	2. Operational Period Date 1 st September 2020 Time 1800hrs	SITUATION REPORT RF201
3. Location Twizel	4. Vegetation Forest/Scrub/Grass/Slash/ Other:	
6. Assessment <p>Fire started in the vicinity of the confluence of the Gladstone and Twizel Rivers along Baikie Hut track approximately 11.25am and spread rapidly through a mix of tussock grass and wilding pine fuels.</p> <p>There are 8 significant residential properties, with multiple structures, affected on the east side of SH80. One house has been lost, along with a barn and four small outbuildings. Currently carrying out property protection using ground crews supported by tankers.</p> <p>Pukaki Scientific Reserve has been extensively damaged.</p> <p>The fire has continued to spread overnight. Perimeter is approximately 25km and total area of incident ground is 3163ha</p>		
7. Action taken <p>Extensive fire control work has been undertaken using ground crews, heavy machinery and aircraft.</p> <p>Heavy machinery has continued to build fire breaks and open up windrows to let them cool down today.</p> <p>Contact has been made and will continue with stakeholders, Landowners, Iwi, Police, LINZ, MPI, MSD DOC, NEMA, Meridian and Netcon. Managed and supervised access to properties for residents has been organised and will be implemented through the afternoon if conditions allow.</p> <p>A fire investigator has identified the point of origin and investigation is under way.</p>		
8. Factors <ul style="list-style-type: none"> • 21.4mm of rain has fallen so far and snow has settled on the fire ground this morning. • Due to snow and freezing temperatures ground crews have been stood down currently. • Power grid control gate 18 has had retardant placed around it for protection. • Powerlines along SH80 are severely damaged. Lines company are starting repair work to get power back to residential properties. • SH80 – Now open • SH8 – Now open • Prime assets – lavender farm and structures • DOC estate • Patchy areas within fire area remain unburnt 		

9. Predicted Incident Development

The rain and snow has stopped all above ground fire. There is still a lot deep seated hot spots burning underground and in windrows of slash.

Five ground crews will work with the heavy machinery to open up and extinguish deep seated hotspots tomorrow.

Infra red will be flown tomorrow morning for perimeter control.

Air resources available if required.

The first residents are moving back in to their currently. Remaining evacuated residents will be allowed back in as remaining fire management activities around their properties are completed.

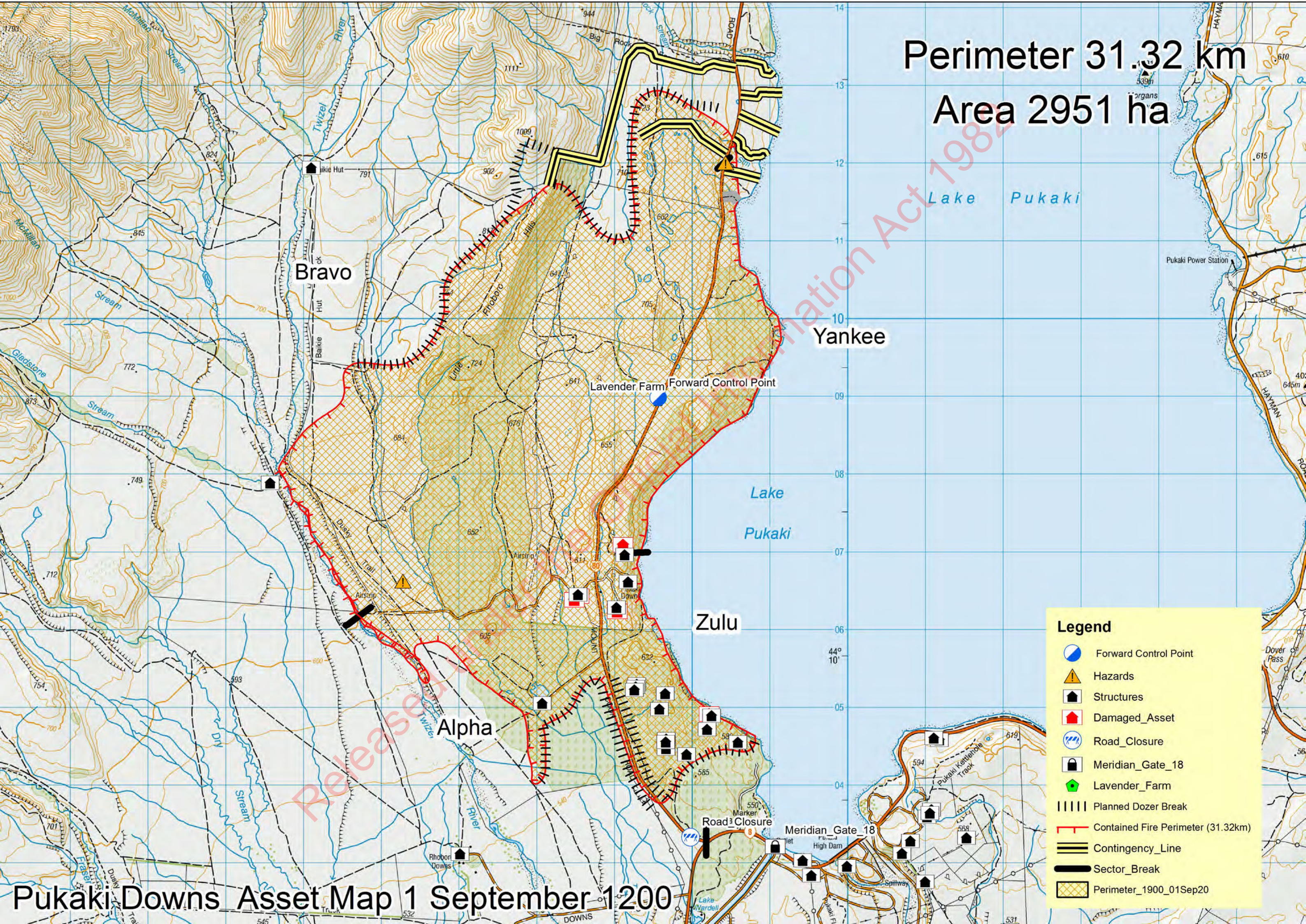
Power will be restored to all properties tomorrow.

10. Prepared by: [REDACTED]

Date/Time 1-9-20 1800hrs

Released under the Official Information Act 1982

Perimeter 31.32 km
Area 2951 ha



Information Act 1987

Legend

- Forward Control Point
- Hazards
- Structures
- Damaged_Asset
- Road_Closure
- Meridian_Gate_18
- Lavender_Farm
- Planned Dozer Break
- Contained Fire Perimeter (31.32km)
- Contingency_Line
- Sector_Break
- Perimeter_1900_01Sep20

Pukaki Downs Asset Map 1 September 1200