

Representation Review

FOR FEEDBACK AND DISCUSSION:
Advisory Group Recommendation

- > 3 Sep 2018: Council resolved to retain the existing structure and undertake another review ahead of the 2022 local elections.
- > 3 Sep 2020: Council agreed to establish an Advisory Group to assist in the development of options.

Council also voted to retain the FPP voting model and agreed not to establish a Māori Ward at present.

- > In reviewing their representation arrangements, local authorities must provide for 'effective representation of communities of interest' (ss19T and 19U) and 'fair representation of electors' (s19V). Key factors to consider:
 - > Communities of interest
 - > Effective representation of communities of interest
 - > Fair representation of electors.

Advisory Group Membership

- > Bruce Robertson (Chair)
- > Clive Geddes (Former Mayor)
- > Dean Whaanga (Te Ao Marama)
- > Professor Janine Hayward (University of Otago)
- > John Glover (Queenstown-Wakatipu Ward resident)
- > Viv Milsom (Wānaka Ward resident)
- > Ian Hall (Wānaka Ward resident)

QLDC Staff support:

- > Jane Robertson (Electoral Officer)
- > Brendan Peet / Alice Balme (General Counsell)
- > Naell Crosby-Roe (Governance & Stakeholder Services Manager)

- > Advisory Group has met on four occasions
- > Discussions have included a Q&A with two members of the current Wānaka Community Board
- > Data has been sourced from Statistics New Zealand Tatauranga Aotearoa
 - > Statistical Area 1 dataset for 2018 census updated March 2020
 - > Meshblock voter populations and boundaries

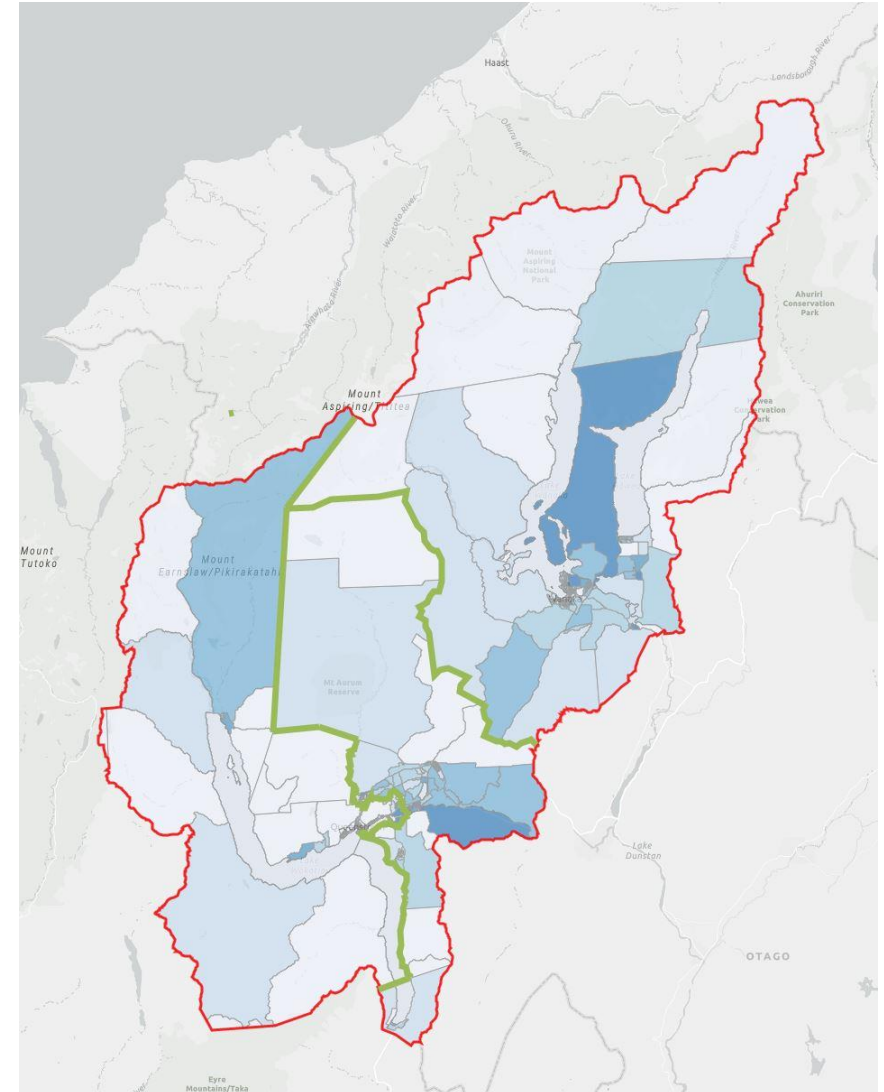
Current State

Ward	Population	Members	Population: member ratio	Difference from quota	% difference from quota
Queenstown-Wakatipu	22,998	6	3,833	-82	-2.09
Wānaka Ward	13,044	3	4,348	433	11.06
Arrowtown Ward	3,108	1	3,108	-807	-20.61
Total	39,150	10	3,915		

- > Arrowtown is non-compliant and cannot meaningfully be expanded
- > Wānaka is under-represented at Council
- > Wānaka has a community board which creates an additional level of bureaucracy and is inequitable in that no other community has a board (adversely creating over-representation)

Recommendation

- > Three wards:
 - > Wānaka-Hāwea Ward (existing)
 - > Whakatipu Ward (new, west of Shotover River)
 - > Kawarau Ward (new, east of Shotover River)
- > The proposed Kawarau Ward represents a community of interest by being largely new or developing communities
- > Increase overall Councillor number to 12 (four per ward)
- > No community boards (i.e. no new boards and dissolve the existing Wānaka Community Board)



Compliance of recommendation

Ward	Population	Members	Population: member ratio	Difference from quota	% difference from quota
Whakatipu Ward	12,774	4	3,194	-67	-2%
Kawarau Ward	13,308	4	3,327	66	2%
Wānaka-Hāwea Ward	13,050	4	3,263	2	0%
Total	39,132	12	3,261		

Further Recommendations

> Revisit the decisions regarding establishing a Māori Ward and the FPP vs STV voting system within three years.

>

[REDACTED]