

29 September 2021

Scott.

By email: fyi-request-16609-c9ab1bcc@requests.fyi.org.nz

Ref: H202111692

Tēnā koe Scott

Response to your request for official information

Thank you for your request under the Official Information Act 1982 (the Act) on 3 September 2021 for information relating to the COVID-19 response. Please find a response to each part of your request below:

“All COVID-19 weekly situation updates, dated since the beginning of August”

One document has been found within the scope of this part of your request. This document is attached to this letter as Document 1 and includes all COVID-19 weekly situation updates within the dates of 1 August 2021 and 3 September 2021, the date of your request.

“All COVID-19 disease indicator summary reports, dated since the beginning of August”

The information requested in this part is refused under section 18(d) of the Act, as the Ministry of Health (the Ministry) will publish a report containing this data within the next four weeks. This information will be publicly available on the Ministry website at: www.health.govt.nz/about-ministry/information-releases/general-information-releases/ongoing-covid-19-disease-indicator-summary-reports.

“A “COVID-19 message from the Director-General of Health” posted to the Ministry of Health website on 30 August stated that “The Ministry’s National PPE and Critical Medical Supply Chain team is reviewing DHB stock on hand for other items where there may be at risk supply.” I request copies of all reports generated as a result of this review.”

The Ministry discusses inventory with the district health board (DHB) procurement leads and intensive care unit (ICU) specialists as part of its regular engagement activities. The purpose of these discussions is to ascertain risks to supply chains for those items impacted and critical for the COVID-19 response. No official reports are produced as a result of these engagements.

Under section 28(3) of the Act, you have the right to ask the Ombudsman to review any decisions made under this request. The Ombudsman may be contacted by email at: info@ombudsman.parliament.nz or by calling 0800 802 602.

Please note that this response, with your personal details removed, may be published on the Ministry of Health website at: www.health.govt.nz/about-ministry/information-releases.

Nāku noa, nā

A handwritten signature in blue ink, consisting of several fluid, overlapping strokes that are difficult to decipher as a specific name.

Dom Harris
**Manager of the Deputy Chief Executive
COVID-19 Health System Response**

PILLARS OF THE COVID-19 ELIMINATION STRATEGY

New Zealand's elimination strategy is a sustained approach to 'Keep it Out', 'Prepare for It', 'Stamp it Out' and 'Manage the Impact'. We do this through:

Pre- & Border Settings, Managed Isolation & Quarantine <i>Strong but proportionate border settings flex and adapt as health security settings shift</i>	
Detection & Surveillance <i>Best-evidence protocols ensure cases are detected and transmission is controlled</i>	
Contact Tracing & Case Management <i>Targeted and timely activities minimise impacts of new outbreaks across the community and health system</i>	
Stronger Public Health Measures <i>Public adherence to tailored health interventions is high due to trust and confidence in our health settings</i>	
Health System Preparedness & Resilience <i>Proactive planning ensures a proportionate response to manage future impacts of COVID-19 and maintain other services</i>	
PRIORITY: COVID-19 Immunisation Programme <i>Targeted and timely roll-out of the COVID-19 vaccine to manage and mitigate the risk of on-going harm to the community. Updates on this Programme are provided separately.</i>	

SUMMARY OF PROGRESS

New Zealand has performed well against its elimination strategy; however, we need to continue to remain vigilant and responsive, especially given the novel COVID-19 variant strains.

As at 10.30am 6 August 2021, there are 0 active community cases. There are 25 active imported cases in Managed Isolation Facilities. The Mariner cases are now included in the total case counts.

As at 6 August, five crew members of the Container Ship MS Mattina are in a Christchurch Managed Isolation Facility (MIF), with 13 crew members remaining onboard. The captain remains in isolation at a Southern DHB residence and has returned a negative test at Day 12. Six crew members are deemed to be recovered.

As at 11:59pm 23 July, Quarantine-Free Travel from all Australian states and territories to New Zealand was suspended for at least eight weeks. From 11:59pm 30 July all returnees from Australia were required to have a valid Managed Isolation Allocation System (MIAS) voucher before check-in and complete 14 days in MIQ on arrival in New Zealand.

On 12 July, Cabinet agreed that officials should start discussions with Samoa, Tonga and Vanuatu on one-way QFT.

Ministerial consultation on the draft amendment to the Required Testing Order (RTO) to include saliva testing is complete and the RTO is expected to come into force on 11 August.

The second cohort of group 4 (those aged 55-59 years) became eligible to book a vaccination appointment from Friday 6 August.

FOCUS FOR WEEK AHEAD

- QR Poster update service has been delayed and is expected to be deployed next week.
- Tracer App release 8 is complete.
- Finalise action plan resulting from scenario planning exercise undertaken with the National COVID-19 Laboratory Testing Network.
- Continued input to work required to operationalise saliva testing prototype and national roll out.
- Finalise and publish process to support new order to continue regulation of Covid-19 point-of-care testing.
- Continue Reconnecting New Zealand and Delta variant work programmes.

CONTACT TRACING

Status: Sufficient capacity and continuing to improve speed overall.

27 July – 2 August for all community and border cases and associated contacts

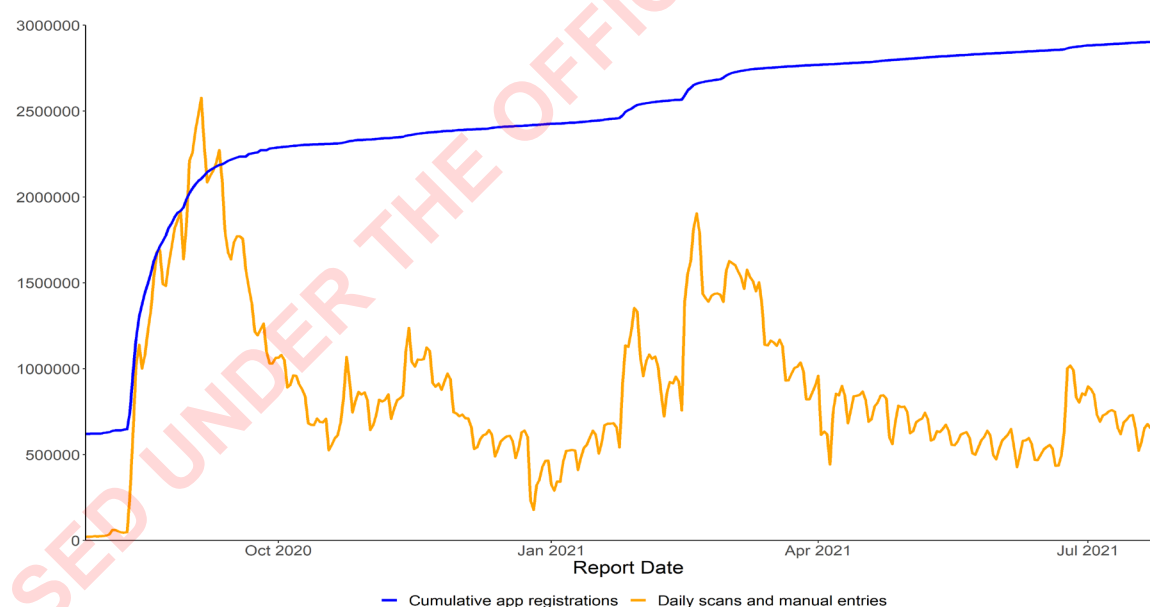
Contact tracing activity	Target	Performance
Time notification to case interview	≥80% within 24 hours	100%
Time case notification to isolation / quarantine of contact	≥80% within 48 hours	90%
Time from close contact identification to isolated/quarantined	≥80% within 24 hours	90%
Proportion of contacts traced	≥80% within 48 hours	91%

For week 27 July – 2 August (cases notified during this period) **91%** Of contacts traced within 2 days of case notification
Target: 80% within 2 days of case notification

NZ COVID TRACER APP

Our next major release (R8) has been deployed to the wider public which includes automated reminder notifications, improvements to manual diary entries and better visibility when Bluetooth tracing is inactive.

COVID-19 Tracer App cumulative registered users and daily scans/manual entries as at 29 July 2021



PERSONAL PROTECTIVE EQUIPMENT

Status: We have sufficient PPE stocks for the health and disability workforce currently. However, ongoing vigilance is required.

There is sufficient stock of all PPE categories in the country, and demand continues to be below low pandemic usage levels.

Item	Quantity on hand week commencing 2 August 21	Current Usage (weekly)	Weeks on hand (current usage)	
Nitrile gloves	304,968,363	4,629,248	66	↑
Isolation gowns	19,325,204	217,107	89	↑
N95s	17,433,355	43,161	404	↑
Procedure masks	290,247,536	616,552	471	↓
Face shields	1,809,756	13,902	130	↑
Goggles/Glasses	1,739,336	2,623	663	↑
Aprons	15,541,572	80,111	194	↓
Hand sanitiser (500ml equiv)	1,198,141	6,103	196	↓

LAB TESTING

Status: Sufficient capacity for current demand.

As at 5 August, 2,513,359 tests have been conducted.

Average daily number of tests this week (rolling)	5,765	↓
Total tested across New Zealand between 30 July – 5 August	40,357	↓
NATIONAL CAPACITY		
Maximum daily testing capacity across all labs as at 5 August	32,972	↑
Test supplies in stock as at 5 August	197,654	↓

CAPACITY AT BORDER SERVICES (MIQ)

Ventilation remediation planning is ongoing.*

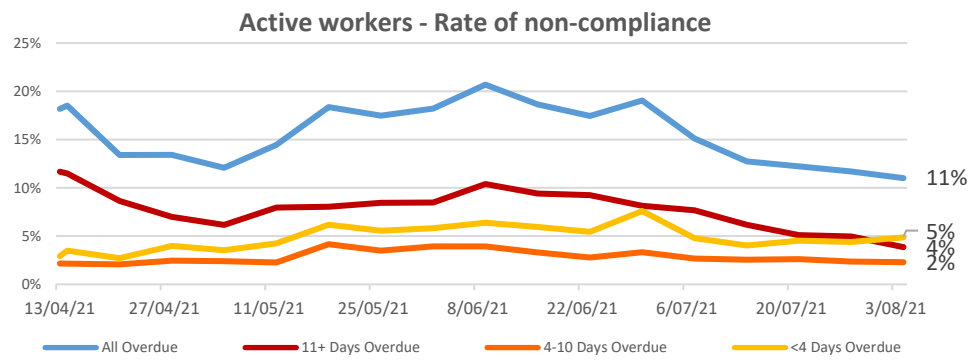
OCCUPANCY & CAPACITY	AKL	WKO	ROT	WLG	CHCH	TOTAL	
Current Occupancy	Isolation: 2,381	Isolation: 141	Isolation: 527	Isolation: 2	Isolation: 874	Isolation: 3,925	↓
	Quarantine: 58				Quarantine: 2		Quarantine: 60
Number of Community Cases	0	0	0	0	0	0	↔
Capacity for Region (MIF only)	4,284	161	310	154	1,301	*6,210	↑

* Please note there has been some updates to how the data is sourced, these numbers include room set aside for NSW.

COVID-19 weekly situation update – testing

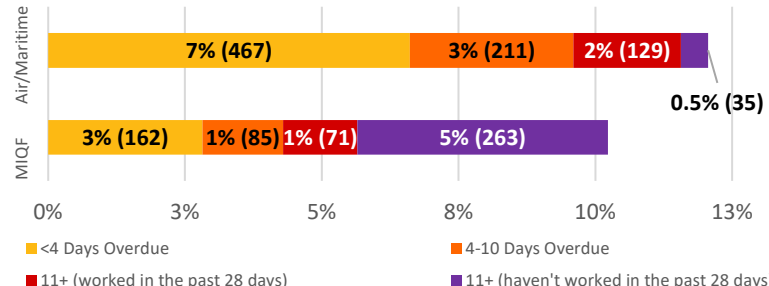


BORDER WORKERS IN THE BORDER WORKER TESTING REGISTER (BWTR)



This graph shows the trend over time of the proportion of workers that are overdue for testing and by how many days as at 4 August 2021

Analysis of non-compliance All 'active' workers



This graph shows the proportion of Air/Maritime and MIQF workers that are currently overdue for testing and by how many days as at 4 August 2021

PCBUs		Total Workers		Active workers		Testing Compliance			Vaccination Status		
MBIE	1 ↔	All	27,834 ↑	All	12,936 ↓	All Workers	All time	Past 28 days	Past 7 days	One Dose	3% ↑
MIQF Teams	315 ↓	MIQF	12,490 ↑	MIQF	5,855 ↓	MIQF	89% ↑	90% ↓	93% ↔	Two Doses	84% ↑
Air/Maritime	247 ↑	Air/Maritime	15,344 ↑	Other	7,081 ↓	Other	90% ↑	94% ↔	97% ↔		
							88% ↓	88% ↔	89% ↓		

- Persons Conducting Business or Undertaking (PCBU)** - There are 248 PCBUs in the BWTR of which MBIE is one. This has been stable over the past week, with just 4 more added.
- Compliance** - 89% of all active workers are compliant with testing (90% for MIQFs, 88% for Air/Maritime). For those working in the past 28 days, 90% are compliant (94% for MIQFs, 88% for Air/Maritime). Of those border workers working last week 93% were compliant (97% for MIQFs, 89% for Air/Maritime). The rate of all active workers 11+ days overdue has dropped from 10% on 9 June to 4% today and is an ongoing focus. Most workers who are 11+ days overdue haven't worked in the last 28 days. Due to the mandatory nature of testing, these workers are not removed from the BWTR. They are, however, being actively managed through monitoring and compliance activity including follow up with the PCBU and directly with the workers. This activity eventually will result in directive letters and, if required, infringement notices. The number of MIQF workers 11+ days overdue has reduced further this week from 469 to 334 (29%).
- Addressing Non-Compliance** - Last week MoH contacted 55 PCBUs and 121 workers. MBIE contacted 93 PCBUs and 105 workers. MoH sent 19 directive letters to workers last week, in total 132 have now been sent. MoH sent four infringement notices last week and has now issued a total of 41 infringement notices. MBIE's Workforce Testing Team has continued to follow up with employers and individuals regarding testing non-compliance. MBIE escalated 28 workers to MoH this week for further action where follow up attempts have been unsuccessful in getting a worker to be tested. 56 referrals to MoH have now been made in total.

REASONS FOR NO TEST BY DEPARTURE DATE FROM FACILITY

Reason	8 July – 14 July	15 July – 21 July	22 July – 28 July	29 July – 4 August
Total	12	8	74	27
Child ⁽¹⁾	4	4	3	17
Clinical reasons	0	0	1	1
No consent given	0	0	0	0
Other ⁽²⁾	8 ⁽³⁾	4 ⁽³⁾	70 ⁽³⁾	9 ⁽³⁾

- (1) "Child" generally refers to under 6 months of age
 (2) "Other" reasons include guests who had a symptomatic test instead, or had a swab in a hospital
 (3) There are a large number of day 0/1 tests entered in error as the guest was not from a high-risk country so was not required to be tested. These appear as 'other' in the data
 These figures are based on numbers of times no test is performed, not on individuals (i.e. as tests are performed on day 3 and day 12, there will be multiple times an individual may not receive a test)

TESTING AND TESTING SITES

Stream	Total tested 8 July – 14 July	Total tested 15 July – 21 July	Total tested 22 July – 28 July	Total tested 29 July – 4 August
Guest – MIF and MIQ	6289	6866	7207	6256
Border Workers – MIQ	204	223	206	181
Border Workers – MIF	2922	1992	2728	2275
Border Workers – Air Crew	382	379	364	294
Border Workers – Airport Staff	1965	2242	2081	1476
Border Workers – Sea port staff	1422	1266	1280	1380
Border Workers – Maritime crew	172	258	115	203
Background Community Testing (GPs and other Primary Care)	19999	13425	17484	15750
CBAC Testing	13628	12514	14158	13245
Contact Tracing ⁽¹⁾	547	604	276	303
Total	47530 ⁽²⁾	39769	45899 ⁽³⁾	41363

- (1) For the purposes of this table, contact tracing numbers are netted off from the CBAC testing volumes.
 (2) There is an increase in testing numbers due to a backlog (11 June to 12 July) of results from Waikato lab being entered on 12 July.
 (3) There is an increase in testing numbers due to the integration of 4,722 backlog records (from 17 May to 10 June), from Waikato, into the data warehouse.

TESTING COMMENTARY

Testing and testing sites

District health boards (DHBs) continue to report that testing numbers have been lower than those seen during the recent surge associated with the Wellington case, but higher than at other times during the year. This is consistent with the increase of presentations with winter illnesses.

Taranaki DHB reported that testing numbers increased at both the New Plymouth and Hawera Community Testing Centres following the detection of SARS-CoV-2 RNA in a sample of wastewater collected from New Plymouth on 20 July and 22 July. Taranaki DHB noted that people presenting to the testing centres included those who were symptomatic and/or who had recently returned from overseas travel.

Hawke's Bay DHB reported that following an outbreak of respiratory syncytial virus (RSV) within some of their Aged Residential Care facilities, all symptomatic residents are being tested for COVID-19. Hawke's Bay DHB further noted that they had seen increasing numbers of symptomatic people presenting to Emergency Departments.

DHBs also reported that in response to the Australian outbreaks and the Delta variant, surge plans for testing are currently being reviewed.

MoH has been carrying out a 'roadshow' to promote saliva testing to workers. Meetings have so far been held in Auckland, Wellington, Christchurch, Taranaki, Tauranga, Northland and Nelson. The saliva testing service provider, Asia Pacific Healthcare Group, is conducting site meetings to finalise arrangements for the location of drop-off and collection booths, saliva kit restocking arrangements, confirming courier schedules and other logistical arrangements.

Auckland DHB reported that planning for the introduction of saliva testing is underway with APHG and MoH. The first site visit occurred last week (29 July) at the airport to finalise sites for saliva sample collection. The DHB further noted that, the Northern Regional Health Coordination Centre team continues to work alongside the saliva testing provider to support implementation across all Auckland sites.

Saliva testing is expected to be operationalised in the week commencing 9 August, at Auckland Airport, the Auckland Jet Park Quarantine Facility and the Ports of Auckland as well as Northport, the Port of Opua, Chelsea Port, Devonport RNZ naval base, Kauri Point RNZ naval base in Birkenhead, Viaduct Marina, Silo Marina, Westhaven Marina, the Port of Tauranga and Lyttelton Port.

Ministerial consultation on the draft amendment to the Required Testing Order (RTO) is complete and the RTO is expected to come into force on 11 August 2021.

Border testing

Managed Isolation and Quarantine Facilities (MIQF): This week Auckland and Canterbury DHBs reported that MIQF testing numbers had increased significantly due to an increase in occupancy associated with the suspension of the Australia Quarantine Free Travel Zone and returning Olympians.

Auckland DHB reported that cohorting – the system that sees persons arriving in New Zealand over a 96-hour period taken to the same MIQ facilities – continues at the MIF facilities, which are running at high occupancy.

Airports/Air Crew: Both Auckland and Canterbury DHBs note that current testing volumes at the airport remain stable.

Ports/ Maritime: Total testing numbers at maritime ports continue to show week to week fluctuations, reflecting expected variations in testing cycles. Taranaki DHB reported the communication and request for repeat testing of port workers instigated by the detection of COVID-19 in a sample of wastewater and the berthing of Viking Bay and Playa Zahara, was challenging but achieved. Lessons learned will be identified for future incident planning.

DHB TESTING BY ETHNICITY

Rate per 1000 people tested for COVID-19 from 23 July – 5 August 2021

DHB of Domicile	Prioritised ethnicity MPAO				Total
	Maori	Pacific	Asian	Other	
Auckland	14.3	22.2	16.4	19.7	22.7
Bay of Plenty	12.7	32.2	12.9	14.1	14.2
Canterbury	10.9	16.4	14.9	12.8	13.6
Capital & Coast	12.1	14.5	11.8	15.2	14.6
Counties Manukau	14.5	27.9	18.3	15.5	18.9
Hawke's Bay	6.4	10.3	5.5	8.8	8.2
Hutt Valley	8.2	12.7	10.3	9.4	9.7
Lakes	8.7	16.8	14.7	10.0	10.3
MidCentral	7.8	16.0	8.1	10.0	9.8
Nelson Marlborough	9.9	31.2	10.2	11.7	12.1
Northland	8.2	10.1	9.1	9.0	8.9
South Canterbury	7.3	20.5	9.3	7.3	7.5
Southern	11.5	22.2	14.1	13.9	14.2
Tairāwhiti	9.0	13.4	16.3	10.4	9.9
Taranaki	12.3	20.8	16.7	15.8	15.5
Waikato	15.7	18.6	18.5	16.0	16.7
Wairarapa	7.3	14.4	8.0	10.3	9.9
Waitemata	12.9	23.0	15.6	16.6	16.7
West Coast	5.2	7.9	4.3	4.4	4.6
Whanganui	4.7	7.2	3.8	7.5	6.7
Total	11.4	22.9	15.5	13.9	15.1

COVID-19 weekly situation update

PILLARS OF THE COVID-19 ELIMINATION STRATEGY

New Zealand's elimination strategy is a sustained approach to 'Keep it Out', 'Prepare for It', 'Stamp it Out' and 'Manage the Impact'. We do this through:

Pre- & Border Settings, Managed Isolation & Quarantine <i>Strong but proportionate border settings flex and adapt as health security settings shift</i>	
Detection & Surveillance <i>Best-evidence protocols ensure cases are detected and transmission is controlled</i>	
Contact Tracing & Case Management <i>Targeted and timely activities minimise impacts of new outbreaks across the community and health system</i>	
Stronger Public Health Measures <i>Public adherence to tailored health interventions is high due to trust and confidence in our health settings</i>	
Health System Preparedness & Resilience <i>Proactive planning ensures a proportionate response to manage future impacts of COVID-19 and maintain other services</i>	
PRIORITY: COVID-19 Immunisation Programme <i>Targeted and timely roll-out of the COVID-19 vaccine to manage and mitigate the risk of on-going harm to the community. Updates on this Programme are provided separately.</i>	

SUMMARY OF PROGRESS

New Zealand has performed well against its elimination strategy; however, we need to continue to remain vigilant and responsive, especially given the novel COVID-19 variant strains.

As at 10.30am 13 August 2021, there are 0 active community cases. There are 44 active imported cases in Managed Isolation Facilities. The mariner cases are now included in the total case counts.

On 4 August, the Ministry was advised that a ship pilot had returned a positive test for COVID-19 while in Queensland, Australia. The pilot had previously been on board the container ship Rio De La Plata from 21 – 23 July.

The ship berthed in Port Tauranga on 4 August and left New Zealand shores to Malaysia on 11 August.

A total of 73 contacts were identified as having boarded the ship between 4 August and 7 August. As at 0830hrs 13 August, 72 contacts have now returned negative test results, with one outstanding.

Given the higher level of risk associated with the Delta variant, the Ministry has established an internal working group to review and strengthen the COVID-19 response to continue to keep all variants of COVID-19 out of our communities.

FOCUS FOR WEEK AHEAD

- QR poster service has a new release deployment scheduled for the week beginning 16 August. The Near Field Communication (NFC) tags trial is on track for mid-August to end September.
- Replenishing contingency supplies of PPE to ensure health providers hold 1-2 weeks supply for use in raised Alert Level settings.
- Finalise action plan resulting from the scenario planning exercise undertaken with the National COVID-19 Laboratory Testing Network.
- Continued input to work required to operationalise the border worker saliva testing prototype and national roll out.
- Finalise and publish the process to support the new Order to continue regulation of COVID-19 point-of-care testing.
- Continue Reconnecting New Zealand and Delta variant work programmes.
- Contribute to consideration of the use of saliva testing to include guests in MIQ.

CONTACT TRACING



Status: Sufficient capacity and continuing to improve speed overall.

3 August – 9 August for all community and border cases and associated contacts

Contact tracing activity	Target	Performance
Time notification to case interview	≥80% within 24 hours	100%
Time case notification to isolation / quarantine of contact	≥80% within 48 hours	93%
Time from close contact identification to isolated/quarantined	≥80% within 24 hours	88%
Proportion of contacts traced	≥80% within 48 hours	93%

For week 3 August – 9 August (cases notified during this period) **93%** Of contacts traced within 2 days of case notification. Target: 80% within 2 days of case notification.

LAB TESTING



Status: Sufficient capacity for current demand.

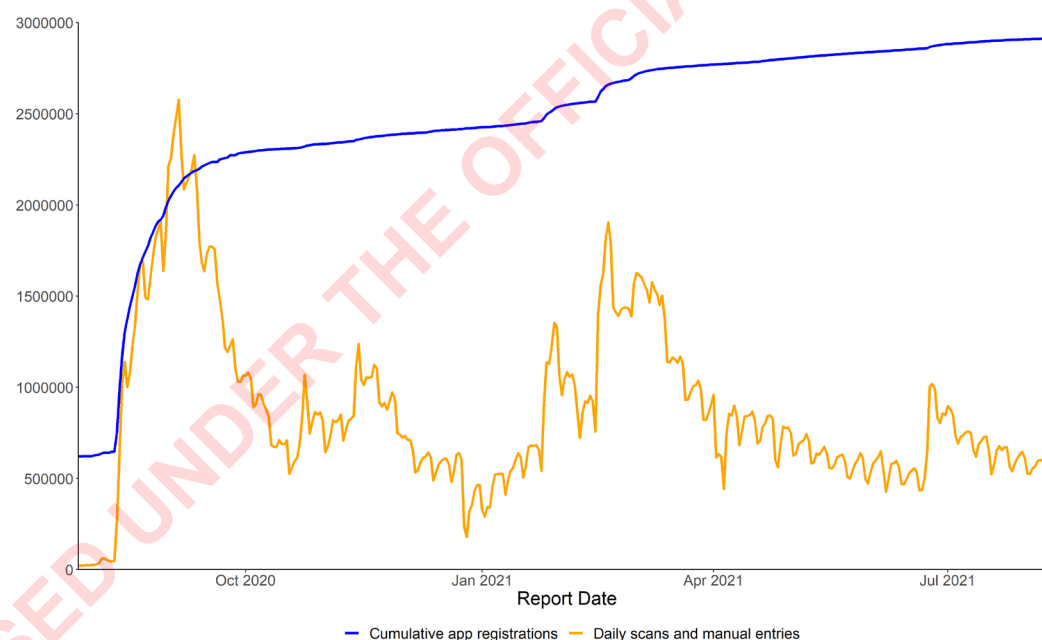
As at 12 August, 2,548,634 tests have been conducted.

Average daily number of tests this week (rolling)	5,039	
Total tested across New Zealand between 6 August – 12 August	35,274	
NATIONAL CAPACITY		
Maximum daily testing capacity across all labs as at 12 August	32,972	
Test supplies in stock as at 12 August	211,810	

NZ COVID TRACER APP



COVID-19 Tracer App cumulative registered users and daily scans/manual entries as at 12 August 2021



CAPACITY AT BORDER SERVICES (MIQ)



Status: saliva testing for border workers is rolling out and we are exploring options for increasing testing frequency of returnees and using mixed modalities.

OCCUPANCY & CAPACITY	AKL	WKO	ROT	WLG	CHCH	TOTAL	
Current Occupancy	Isolation: 2,926	Isolation: 288	Isolation: 259	Isolation: 74	Isolation: 753	Isolation: 4,300	
	Quarantine: 69				Quarantine: 4		Quarantine: 73
Number of Community Cases	0	0	0	0	0	0	
Capacity for Region (MIF only)	4,324	162	313	98	1,313	6,210	

PERSONAL PROTECTIVE EQUIPMENT



Status: We have sufficient PPE stocks for the health and disability workforce currently. However, ongoing vigilance is required.

There is sufficient stock of all PPE categories in the country, and demand continues to be below low pandemic usage levels.

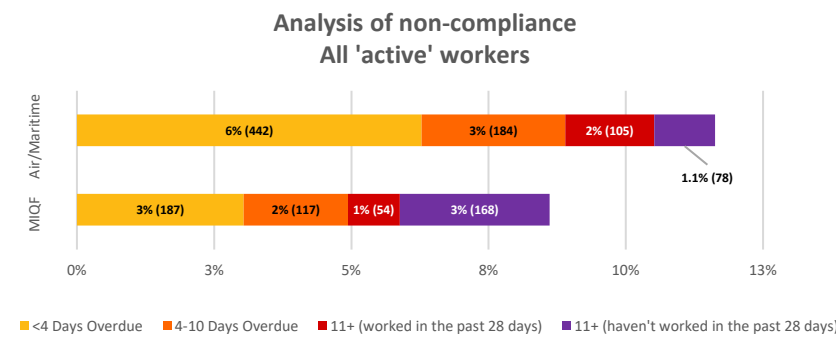
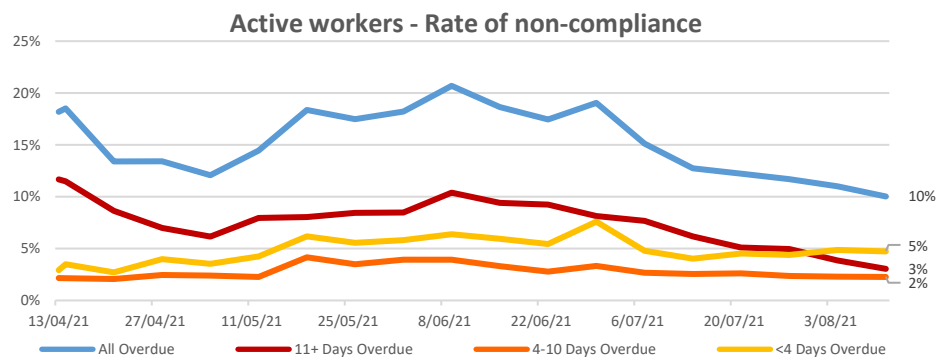
Item	Quantity on hand week commencing 9 August 21	Current Usage (weekly)	Weeks on hand (current usage)	
Nitrile gloves	304,155,450	4,605,035	66	
Isolation gowns	18,838,270	189,980	99	
N95s	17,518,873	54,561	321	
Procedure masks	289,866,123	675,015	429	
Face shields	1,806,756	15,110	120	
Goggles/Glasses	1,731,170	3,202	541	
Aprons	15,571,857	73,077	213	
Hand sanitiser (500ml equivalent)	1,197,116	6,508	184	

Date: 13/08/2021

COVID-19 weekly situation update – testing



BORDER WORKERS IN THE BORDER WORKER TESTING REGISTER (BWTR)



This graph shows the trend over time of the proportion of workers that are overdue for testing and by how many days as at 11 August 2021

This graph shows the proportion of Air/Maritime and MIQF workers that are currently overdue for testing and by how many days as at 11 August 2021

PCBUs		Total Workers		Active workers		Testing Compliance			Vaccination Status	
MBIE	1 ↔	All	30,580 ↑	All	13,320 ↑	All Workers	All time 90% ↑	Past 28 days 91% ↑	Past 7 days 93% ↔	One Dose 4% ↑
MIQF Teams	282 ↓	MIQF	12,678 ↑	MIQF	6,258 ↑	MIQF	91% ↑	94% ↔	97% ↔	Two Doses 86% ↑
Air/Maritime	248 ↑	Air/Maritime	17,902 ↑	Other	7,062 ↓	Other	89% ↑	89% ↑	88% ↓	

- Persons Conducting Business or Undertaking (PCBU)** - There are 249 PCBUs in the BWTR of which MBIE is one. This has been stable over the past week, with just one more added.
- Compliance** - 90% of all active workers are compliant with testing (91% for MIQFs, 89% for Air/Maritime). For those working in the past 28 days, 91% are compliant (94% for MIQFs, 89% for Air/Maritime). Of those border workers working last week 93% were compliant (97% for MIQFs, 88% for Air/Maritime). The rate of all active workers 11+ days overdue has dropped from 10% on 9 June to 3% today and is an ongoing focus. Most workers who are 11+ days overdue haven't worked in the last 28 days. The number of MIQF workers 11+ days overdue has reduced further in the past week from 334 to 222.
- Addressing Non-Compliance** - Last week the Ministry of Health contacted 53 PCBUs and 122 workers, and MBIE contacted 90 PCBUs and 124 workers. The Ministry sent 10 directive letters to workers last week, and a total of 142 have now been sent. The Ministry also issued 11 infringement notices last week, and in total 48 have now been issued. MBIE's Workforce Testing Team has continued to follow up with employers and individuals regarding testing non-compliance. MBIE escalated 7 workers to the Ministry this week for further action where follow up attempts have been unsuccessful in getting a worker to be tested. 63 referrals have now been made in total.

REASONS FOR NO TEST BY DEPARTURE DATE FROM FACILITY

Reason		15 July – 21 July	22 July – 28 July	29 July – 4 August	5 August – 11 August
Total	↓	8	74	27	15
Child ⁽¹⁾	↓	4	3	17	7
Clinical reasons	↔	0	1	1	1
No consent given	↑	0	0	0	6
Other ⁽²⁾	↓	4 ⁽³⁾	70 ⁽³⁾	9 ⁽³⁾	1 ⁽³⁾

(1) "Child" generally refers to under 6 months of age
 (2) "Other" reasons include guests who had a symptomatic test instead, or had a swab in a hospital
 (3) There are a large number of day 0/1 tests entered in error as the guest was not from a high-risk country so was not required to be tested. These appear as 'other' in the data
 These figures are based on numbers of times no test is performed, not on individuals (i.e. as tests are performed on day 3 and day 12, there will be multiple times an individual may not receive a test)

TESTING AND TESTING SITES

Stream		Total tested 15 July – 21 July	Total tested 22 July – 28 July	Total tested 29 July – 4 August	Total tested 5 August – 11 August
Guest – MIF and MIQ	↓	6866	7207	6255	5056
Border Workers – MIQ	↓	223	206	181	12
Border Workers – MIF	↓	1992	2728	2275	1767
Border Workers – Air Crew	↓	379	364	294	120
Border Workers – Airport Staff	↓	2242		1476	438***
Border Workers – Sea port staff	↓	1266	1280	1380	1252
Border Workers – Maritime crew	↑	258	115	203	247
Background Community Testing (GPs and other Primary Care)	↓	13412	17279	15293	13717
CBAC Testing	↓	12527	14364	13702	12790
Contact Tracing ⁽¹⁾	↓	604	276	303	295
Total	↓	39769	45900 ⁽²⁾	41362	35725

(1) For the purposes of this table, contact tracing numbers are netted off from the CBAC testing volumes.
 (2) Decrease in the number of tests MoH can identify as airport staff from Auckland DHB, as the DHB may be using SURV codes MoH currently has no mapping for

TESTING COMMENTARY

Testing and testing sites

Most District Health Board (DHBs) reported stable or slightly lower demand for testing as fewer people presented with winter illnesses.

Canterbury DHB reported high levels of testing of symptomatic individuals, which is consistent with winter illnesses, although there were fewer overall tests conducted than the previous week. Taranaki DHB reported a return of testing numbers to levels recorded before the detection of COVID-19 in Taranaki's wastewater.

In contrast, West Coast advised of a small increase in testing attributed to the spread of RSV. The Medical Officer of Health at the West Coast DHB issued a reminder of the importance of COVID-19 testing through the Primary Health Organisation and DHB leadership team, warning against complacency, and reiterating the updated testing guidance.

DHBs confirmed they are reviewing their surge plans in response to the Australian outbreaks and the Delta variant, as well as preparing for the introduction of saliva testing. Auckland DHB is conducting further work on preparing for the potential redeployment of its workforce to support an outbreak response should that occur.

The Ministry of Health has been carrying out a 'roadshow' at ports, airports, MIQFs and DHBs to introduce saliva testing to border workers. Meetings have been held in Auckland, Wellington, Christchurch, Dunedin, Hawkes Bay, Taranaki, Tauranga, Northland, Nelson and Invercargill.

Auckland DHB reported a high level of interest in saliva testing among PCBUs at the airport. The DHB is working closely with the testing provider, APHG, and the airport to identify accessible sample collection sites to support saliva testing.

Nelson Marlborough DHB also reported that they are engaged with both its local ports regarding saliva testing for border staff. The DHB expects a reduction in staffing requirements at the ports if there is strong saliva testing uptake.

Amendments to the Required Testing Order promulgating saliva testing came into force on schedule on 12 August. Saliva testing commenced this week at Auckland Airport, and the Ports of Auckland as well as Northport, the Port of Opua, and Lyttelton Port.

Border testing

Managed Isolation and Quarantine Facilities (MIQF): Auckland DHB reported a stable occupancy rate in Managed Isolation Facilities (MIF) with approximately 3,560 guests at the end of the week. The daily testing rate averaged between 650 – 800 for MIF guests, excluding symptomatic guests.

Airports/Air Crew: Canterbury DHB reported that current testing volumes at the Christchurch airport remain stable.

Ports/ Maritime: Bay of Plenty DHB reported a modest increase in testing volumes as a result of the positive Covid-19 cases among the crew aboard the ship Rio De La Plata.

There was good turnout for COVID-19 testing among Tauranga port workers from Monday 9 August. A swabbing site was set up for port workers within the port area. Other port workers also chose to be tested as an extra precaution. No positive tests from port workers have been reported and all workers have now been cleared to return to work.

DHB TESTING BY ETHNICITY

Rate per 1000 people tested for COVID-19 from 23 July – 12 August 2021

DHB of Domicile	Prioritised ethnicity MPAO				Total
	Maori	Pacific	Asian	Other	
Auckland	13.9	22.7	15.5	18.7	21.6
Bay of Plenty	12.2	30.1	12.1	13.2	13.5
Canterbury	10.8	15.5	12.8	11.7	12.4
Capital & Coast	10.9	13.3	10.2	14.4	13.6
Counties Manukau	13.6	25.9	17.3	14.1	17.6
Hawke's Bay	5.8	11.7	6.2	7.4	7.3
Hutt Valley	7.6	10.5	9.1	8.6	8.7
Lakes	7.8	15.7	13.5	8.5	9.0
MidCentral	6.3	10.1	5.8	8.0	7.8
Nelson Marlborough	9.5	36.4	9.8	10.4	11.0
Northland	7.6	6.9	7.1	7.4	7.6
South Canterbury	7.0	12.3	6.3	6.3	6.4
Southern	9.6	24.4	13.2	12.5	12.8
Tairāwhiti	6.4	8.1	8.6	9.1	7.7
Taranaki	6.9	12.2	12.5	9.6	9.4
Waikato	7.5	9.2	10.8	8.1	8.4
Wairarapa	6.5	10.8	8.8	8.8	8.5
Waitemata	11.7	21.2	14.4	15.3	15.3
West Coast	5.4	7.9	5.4	4.5	4.8
Whanganui	3.0	5.9	4.1	5.0	4.6
Total	9.5	21.2	14.0	11.9	13.1

COVID-19 weekly situation update

PILLARS OF THE COVID-19 ELIMINATION STRATEGY

New Zealand's elimination strategy is a sustained approach to 'Keep it Out', 'Prepare for It', 'Stamp it Out' and 'Manage the Impact'. We do this through:

Pre- & Border Settings, Managed Isolation & Quarantine <i>Strong but proportionate border settings flex and adapt as health security settings shift</i>	
Detection & Surveillance <i>Best-evidence protocols ensure cases are detected and transmission is controlled</i>	
Contact Tracing & Case Management <i>Targeted and timely activities minimise impacts of new outbreaks across the community and health system</i>	
Stronger Public Health Measures <i>Public adherence to tailored health interventions is high due to trust and confidence in our health settings</i>	
Health System Preparedness & Resilience <i>Proactive planning ensures a proportionate response to manage future impacts of COVID-19 and maintain other services</i>	
PRIORITY: COVID-19 Immunisation Programme <i>Targeted and timely roll-out of the COVID-19 vaccine to manage and mitigate the risk of on-going harm to the community. Updates on this Programme are provided separately.</i>	

SUMMARY OF PROGRESS

New Zealand has performed well against its elimination strategy; however, we need to continue to remain vigilant and responsive, especially given the novel COVID-19 variant strains.

As at 10.30am 20 August 2021, there are 30 active community cases. There are 39 active imported cases in Managed Isolation Facilities.

On 17 August, the Ministry of Health was notified by the Auckland Regional Public Health Service (ARPHS) of a COVID-19 case in the community (Case A). Whole genome sequencing (WGS) shows Case A has the Delta variant. Case A is deemed to have been infectious from Thursday 12 August 2021 and was in the community until Monday 16 August.

Preliminary WGS results show that a recent returnee from Sydney, Australia is 1 SNP apart from Case A. The returnee arrived in New Zealand on 7 August and was initially completing isolation in Crowne Plaza. They were then transferred to Jet Park following a positive result.

An in-facility transmission investigation has commenced which is looking into the returnee case and a travel bubble of three cases in a room isolated near them.

At 6:00pm on 17 August, the Prime Minister announced that all of New Zealand will move to Alert Level 4 from 11:59pm 17 August. This will be in place for at least 7 days for Auckland and Coromandel regions and will be in place for at least 3 days for the rest of New Zealand. An additional public health risk assessment was completed on 19 August which deemed the public health risk for New Zealand to still be high.

As at 20 August, there have been 31 community cases detected associated with this outbreak. This is an increase of 11 cases since 20 August, of which 8 cases are in Auckland and 3 cases are in Wellington. 19 cases are epidemiologically linked to the initial cluster and 12 cases are unlinked (as yet) to the initial cluster with investigations for a link ongoing.

FOCUS FOR WEEK AHEAD

- The response to the current community outbreak in Auckland.
- Ensuring that the health and disability sector has the PPE and critical medical supplies needed. There are no current issues regarding PPE supplies and the sector is well prepared with contingency stock.
- Finalise action plan resulting from scenario planning exercise undertaken with the National COVID-19 Laboratory Testing Network.
- Continued input to work required to operationalise border worker saliva testing prototype and national roll out.
- Finalise and publish process to support new Order to continue regulation of COVID-19 point-of-care testing.
- Input into the Reconnecting New Zealanders work
- Contribute to consideration of extended use of saliva testing.

CONTACT TRACING



10 August – 16 August for all community and border cases and associated contacts*

Contact tracing activity	Target	Performance
Time notification to case interview	≥80% within 24 hours	100%
Time case notification to isolation / quarantine of contact	≥80% within 48 hours	89%
Time from close contact identification to isolated/quarantined	≥80% within 24 hours	92%
Proportion of contacts traced	≥80% within 48 hours	89%

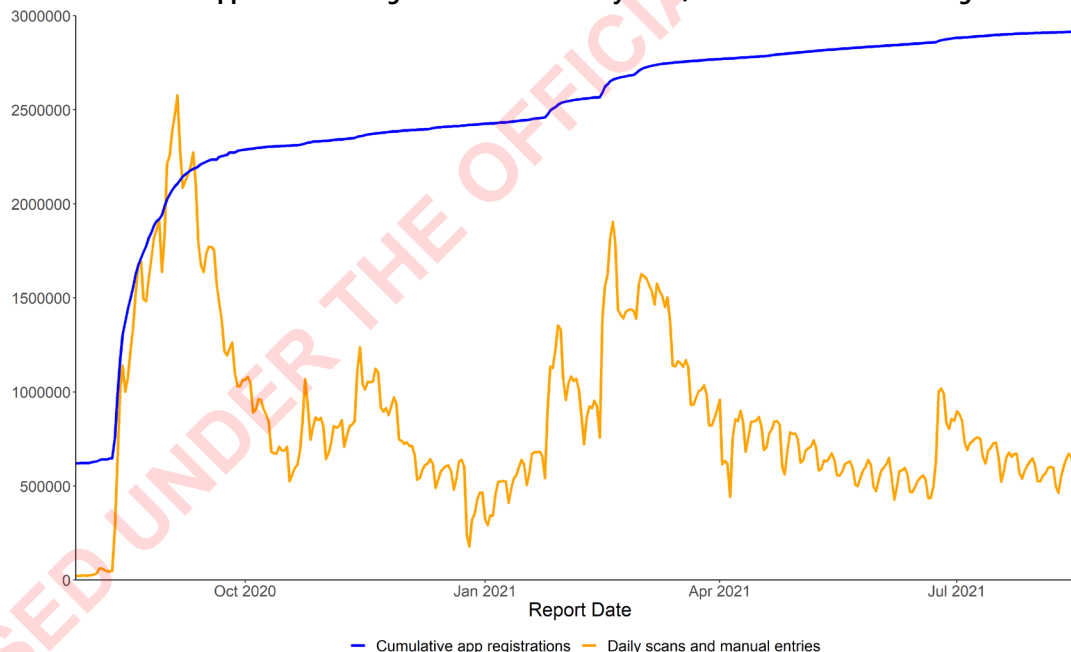
For week 10 August – 16 August (cases notified during this period) **89%** **Of contacts traced within 2 days of case notification**
 Target: 80% within 2 days of case notification

*Please note that this data does not include the performance related to the Auckland community outbreak. This will be included in next week's update.

NZ COVID TRACER APP



COVID-19 Tracer App cumulative registered users and daily scans/manual entries as at 20 August 2021



LAB TESTING



Status: Sufficient capacity for current demand.

As at 19 August, 2,548,634 tests have been conducted.

Average daily number of tests this week (rolling)	9,085	
Total tested across New Zealand between 13 August – 19 August	63,598	
NATIONAL CAPACITY		
Maximum daily testing capacity across all labs as at 19 August	39,800	
Test supplies in stock as at 19 August	184,193	

CAPACITY AT BORDER SERVICES (MIQ)



Status: meeting daily with DHB representatives who are setting up Community MIQ services and working on readiness to take referrals. Work is continuing on refining the in-MIF transmission mitigation mapping.

OCCUPANCY & CAPACITY	AKL	WKO	ROT	WLG	CHCH	TOTAL	
Current Occupancy	Isolation: 3,019	Isolation: 147	Isolation: 355	Isolation: 73	Isolation: 743	Isolation: 4,337	
	Quarantine: 89				Quarantine: 2		Quarantine: 91
Number of Community Cases	28	0	0	3	0	0	
Capacity for Region (MIF only)	4,324	162	313	98	1,313	6,210	

PERSONAL PROTECTIVE EQUIPMENT



Status: We have sufficient PPE stocks for the health and disability workforce currently. However, ongoing vigilance is required.

There are no issues regarding PPE supplies currently. The Ministry holds supply for 12 weeks consumption at a pandemic level. These supplies should be sufficient to meet immediate requirements. The Ministry will continue to monitor supply to ensure that the health and disability sector has the PPE it needs at all times.

Item	Quantity on hand week commencing 16 August 21	Current Usage (weekly)	Weeks on hand (current usage)	
Nitrile gloves	301,771,518	4,114,509	73	
Isolation gowns	18,641,507	164,027	114	
N95s	18,325,231	71,054	258	
Procedure masks	289,225,518	728,668	397	
Face shields	1,796,122	18,284	98	
Goggles/Glasses	1,726,706	3,307	522	
Aprons	15,528,843	78,232	198	
Hand sanitiser (500ml equiv)	1,191,964	6,751	177	

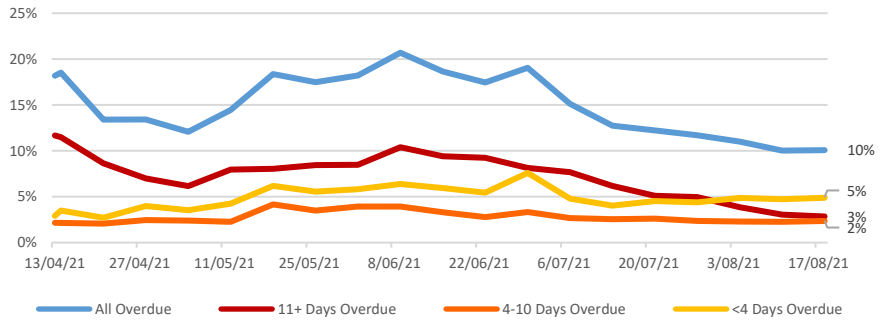
Date: 20/08/2021

COVID-19 weekly situation update – testing



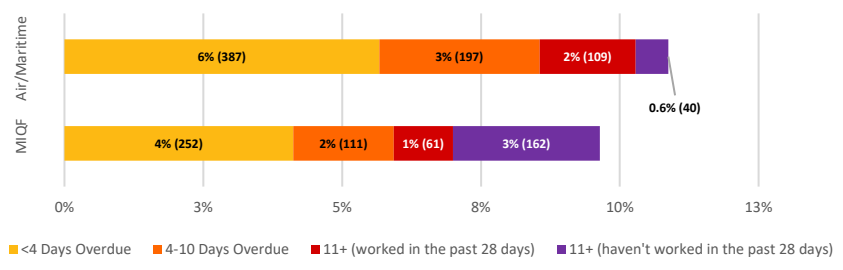
BORDER WORKERS IN THE BORDER WORKER TESTING REGISTER (BWTR)

Active workers - Rate of non-compliance



This graph shows the trend over time of the proportion of workers that are overdue for testing and by how many days as at 18 August 2021

Analysis of non-compliance All 'active' workers



This graph shows the proportion of Air/Maritime and MIQF workers that are currently overdue for testing and by how many days as at 18 August 2021

PCBUs		Total Workers		Active workers		Testing Compliance			Vaccination Status		
MBIE	1 ↔	All	28,262 ↓	All	13,099 ↓	All Workers	All time	Past 28 days	Past 7 days	One Dose	4% ↔
MIQF Teams	289 ↑	MIQF	12,835 ↑	MIQF	6,245 ↓	MIQF	90% ↓	94% ↓	96% ↓	Two Doses	87% ↑
Air/Maritime	250 ↑	Air/Maritime	15,427 ↓	Other	6,854 ↓	Other	89% ↔	89% ↔	88% ↔		

- Persons Conducting Business or Undertaking (PCBU)** - There are 251 PCBUs in the BWTR of which MBIE is one. This has been stable over the past week, with just two more added.
- Compliance** - 90% of all active workers are compliant with testing (90% for MIQFs, 89% for Air/Maritime). For those working in the past 28 days, 91% are compliant (93% for MIQFs, 89% for Air/Maritime). Of those border workers working last week 92% were compliant (96% for MIQFs, 88% for Air/Maritime). The rate of all active workers 11+ days overdue has dropped from 10% on 9 June to 3% today and is an ongoing focus. Most workers who are 11+ days overdue haven't worked in the last 28 days. The number of MIQF workers 11+ days overdue remains stable around 220, which is much lower than previously.
- Addressing Non-Compliance** - Last week the Ministry of Health contacted 55 PCBUs and 145 workers. MBIE contacted 81 PCBUs and 124 workers. The Ministry sent 1 directive letter to workers last week, in total 138 have now been sent. The Ministry issued 4 infringement notices last week, in total 51 have now been issued. MBIE escalated 20 workers to the Ministry this week for further action where follow up attempts have been unsuccessful in getting a worker to be tested. 83 referrals have now been made in total. All border worker monitoring and compliance activity will continue as usual during the heightened alert levels and response period.

REASONS FOR NO TEST BY DEPARTURE DATE FROM FACILITY

Reason		22 July – 28 July	29 July – 4 August	5 August – 11 August	12 August – 18 August
Total	↓	74	27	15	5
Child ⁽¹⁾	↓	3	17	7	3
Clinical reasons	↔	1	1	1	1
No consent given	↓	0	0	6	0
Other ⁽²⁾	↔	70 ⁽³⁾	9 ⁽³⁾	1 ⁽³⁾	1 ⁽³⁾

(1) "Child" generally refers to under 6 months of age
 (2) "Other" reasons include guests who had a symptomatic test instead, or had a swab in a hospital
 (3) There are a large number of day 0/1 tests entered in error as the guest was not from a high-risk country so was not required to be tested. These appear as 'other' in the data
 These figures are based on numbers of times no test is performed, not on individuals (i.e. as tests are performed on day 3 and day 12, there will be multiple times an individual may not receive a test)

TESTING AND TESTING SITES

Stream		Total tested 22 July – 21 July	Total tested 29 July – 4 August	Total tested 5 August – 11 August	Total tested 12 August – 18 August
Guest – MIF and MIQ	↑	7,207	6,255	5,056	5,323
Border Workers – MIQ	↓	206	181	12	7
Border Workers – MIF	↑	2,728	2,275	1,767	1,886
Border Workers – Air Crew	↑	364	294	120	146
Border Workers – Airport Staff	↑	2,081	1,476	438 ⁽³⁾	486 ⁽³⁾
Border Workers – Sea port staff	↑	1,280	1,380	1,252	1,275
Border Workers – Maritime crew	↑	115	203	247	170
Background Community Testing (GPs and other Primary Care)	↑	17,264	15,237	13,484	17,963
CBAC Testing	↑	14,379	13,758	12,727	13,785
Contact Tracing ⁽¹⁾	↑	276	303	295	719
Total	↑	45,900⁽²⁾	41,362	35,398	41,760

(1) For the purposes of this table, contact tracing numbers are netted off from the CBAC testing volumes.
 (2) There is an increase in testing numbers due to the integration of 4,722 backlog records (for the period 17 May - 10 June), from Waikato, into the data warehouse.
 (3) Decrease in the number of tests MoH can identify as airport staff, as the DHB may be using SURV codes MoH currently has no mapping for. The Ministry is working with Auckland DHB to resolve this as soon as possible.

TESTING COMMENTARY

Testing and testing sites

In response to the Auckland community outbreak, the number of tests performed nationwide over the last seven days has greatly increased. Testing numbers have increased from 7,258 on Wednesday 11 August and 6,060 on Thursday 12 August to 12, 884 on Wednesday 18 August and 27, 899 on Thursday 19 August (the highest number of tests ever processed in one day). The number of tests is expected to grow further in the coming days.

To ensure adequate testing facilities are available, five additional pop-up Community Testing Centres (CTCs) are in operation in Auckland. NRHCC have also set up a testing site at Avondale College, and additional CTCs at Auckland City Hospital and Glen Innes. In addition, two pop-up CTCs have been set up in the Waikato and one pop-up CTC in the Coromandel.

District Health Boards (DHBs) have recently confirmed their surge plans in response to the Australian outbreaks and the Delta variant, as well as preparing for the introduction of saliva testing. This week, messaging has been provided to all DHBs advising them to further ensure that they have adequate testing stations in operation and are able to stand up additional testing stations as demand requires.

Wastewater testing continues at ESR's 26 sites across the country, with recent additions of Whangarei, Gisborne, Tauranga, Mt Maunganui, Taupo, New Plymouth, Napier, Palmerston North, Nelson, Dunedin and Invercargill. The plan is to test these sites twice this week instead of once as is routine.

Arrangements are currently being made for the transportation of wastewater samples from Coromandel sites to ESR.

Surveillance saliva testing of border workers commenced last week at Auckland Airport, and the Ports of Auckland as well as Northport, the Port of Opuha, and Port Otago. The service provider, APHG, continue to work with ports and MIQs throughout the country and Christchurch airport in preparation for their go live date in the coming weeks. As of 19 August, 445 border workers had opted into saliva testing.

Auckland DHB reports that they have seen a high level of interest in saliva testing among PCBUs at Auckland airport. In collaboration with the APHG, all testing related items were set up last week at Bledisloe and Fergusson Wharf. Community testing sites in Auckland are also hosting drop off boxes at their locations to improve access to the border workforce outside their work site and hours. There are now 3 locations for workers to gather supplies, complete their tests and 7 locations to drop off specimens. The team has this week been working on adding an 8th drop off location.

Border testing

Managed Isolation and Quarantine Facilities (MIQF): Auckland DHB reports a stable occupancy rate in Managed Isolation Facilities, ranging from approximately 51 – 55%. The DHB further highlighted that they are currently developing an Acuity Model to identify workforce needs for individual high need returnees and are working with the Ministry of Health on the emergency voucher process.

Airports/Air Crew: Following a decrease in the number of tests that the Ministry can identify as airport staff at Auckland airport, the Ministry is currently working with Auckland DHB to ensure that the correct SURV codes are being used.

Ports/ Maritime: Bay of Plenty DHB had reported a modest increase in testing volumes as a result of the positive cases among the crew aboard the ship Rio De La Plata.

Auckland DHB reported that testing numbers at the port saw a small increase just prior to the launch of saliva testing. In addition, testing staff found that border workers who came forward a day or two before their normal test date advised that they wanted to have a final nasopharyngeal swab so they could then start their saliva testing cycle in a pattern that better suited their work and home life.

Northland DHB reports that over the next two weeks, the provision of nasopharyngeal tests for border workers will continue at Marsden Point while the transition to saliva testing occurs.

DHB TESTING BY ETHNICITY

Rate per 1000 people tested for COVID-19 from 6 August – 19 August 2021

DHB of Domicile	Prioritised ethnicity MPAO				Total
	Maori	Pacific	Asian	Other	
Auckland	20.2	28.2	21.1	28.4	28.8
Bay of Plenty	14.4	31.7	13.3	18.1	17.3
Canterbury	13.6	16.9	14.6	15.3	15.4
Capital & Coast	14.7	16.0	13.4	20.1	18.5
Counties Manukau	17.1	29.9	21.0	18.2	21.5
Hawke's Bay	7.6	14.0	9.3	10.9	10.2
Hutt Valley	9.8	12.2	10.6	12.9	12.1
Lakes	9.2	19.2	16.4	12.1	11.8
MidCentral	11.1	14.8	9.3	13.8	13.2
Nelson Marlborough	11.8	39.6	14.0	14.0	14.4
Northland	9.0	10.4	10.5	10.2	9.9
South Canterbury	9.6	18.4	6.8	8.3	8.6
Southern	12.9	24.4	14.1	16.6	16.5
Tairāwhiti	7.5	9.8	18.0	11.8	9.8
Taranaki	9.8	12.2	15.7	11.2	11.4
Waikato	11.1	11.6	13.8	13.7	13.2
Wairarapa	6.9	14.4	14.4	11.2	10.8
Waitemata	18.2	28.1	21.8	24.1	23.5
West Coast	5.4	7.9	9.7	4.7	5.1
Whanganui	5.6	6.6	7.2	8.2	7.6
Total	12.7	25.3	18.3	17.1	17.7

COVID-19 weekly situation update

PILLARS OF THE COVID-19 ELIMINATION STRATEGY

New Zealand's elimination strategy is a sustained approach to 'Keep it Out', 'Prepare for It', 'Stamp it Out' and 'Manage the Impact'. We do this through:

Pre- & Border Settings, Managed Isolation & Quarantine <i>Strong but proportionate border settings flex and adapt as health security settings shift</i>	
Detection & Surveillance <i>Best-evidence protocols ensure cases are detected and transmission is controlled</i>	
Contact Tracing & Case Management <i>Targeted and timely activities minimise impacts of new outbreaks across the community and health system</i>	
Stronger Public Health Measures <i>Public adherence to tailored health interventions is high due to trust and confidence in our health settings</i>	
Health System Preparedness & Resilience <i>Proactive planning ensures a proportionate response to manage future impacts of COVID-19 and maintain other services</i>	
PRIORITY: COVID-19 Immunisation Programme <i>Targeted and timely roll-out of the COVID-19 vaccine to manage and mitigate the risk of on-going harm to the community. Updates on this Programme are provided separately.</i>	

SUMMARY OF PROGRESS

New Zealand has performed well against its elimination strategy; however, we need to continue to remain vigilant and responsive, especially given the novel COVID-19 variant strains.

As at 10.30am 29 August 2021, there are 511 active community cases. There are 40 active imported cases in Managed Isolation Facilities.

As at 1:00pm 29 August, there has been an increase of 83 cases in the community since the day prior. Of the total number of new cases, 1 is in Wellington and 82 are in Auckland.

There are currently 7 epidemiologically linked subclusters identified within this outbreak. The 2 largest clusters are the Birkdale Social Network cluster associated with Case A (over 68 confirmed cases), and a cluster associated with the Assembly of God church in Mangere (over 237 confirmed cases). The remaining clusters have fewer than 20 people associated with them.

As at 10:00am 29 August, 32,771 contacts have been identified. Of these, 30,344 are close contacts and 2427 are casual contacts

Advice was provided to Cabinet on Thursday 26 August 2021 and a decision regarding level changes was made on Friday 27 August 2021. The PM announced that the regions south of Auckland would move to Alert Level 3 at 11:59pm on Tuesday 31 August, while Auckland and Northland would remain at Alert Level 4. Cabinet will review these decisions on Monday 30 August 2021.

FOCUS FOR WEEK AHEAD

- The response to the current community outbreak.
- Release a new web form for the public to submit their contact details for a Location of Interest. Complete a bulk re-send of posters and updated advice to all poster holders.
- Continued input to work required to operationalise and then review Border Worker saliva testing national rollout.
- Input into the Reconnecting NZ work programme.
- Continue working on considerations for healthcare workforce surveillance testing.
- Continue investigating options for additional laboratory testing surge capacity.

CONTACT TRACING

17 August – 27 August for all community and border cases and associated contacts*

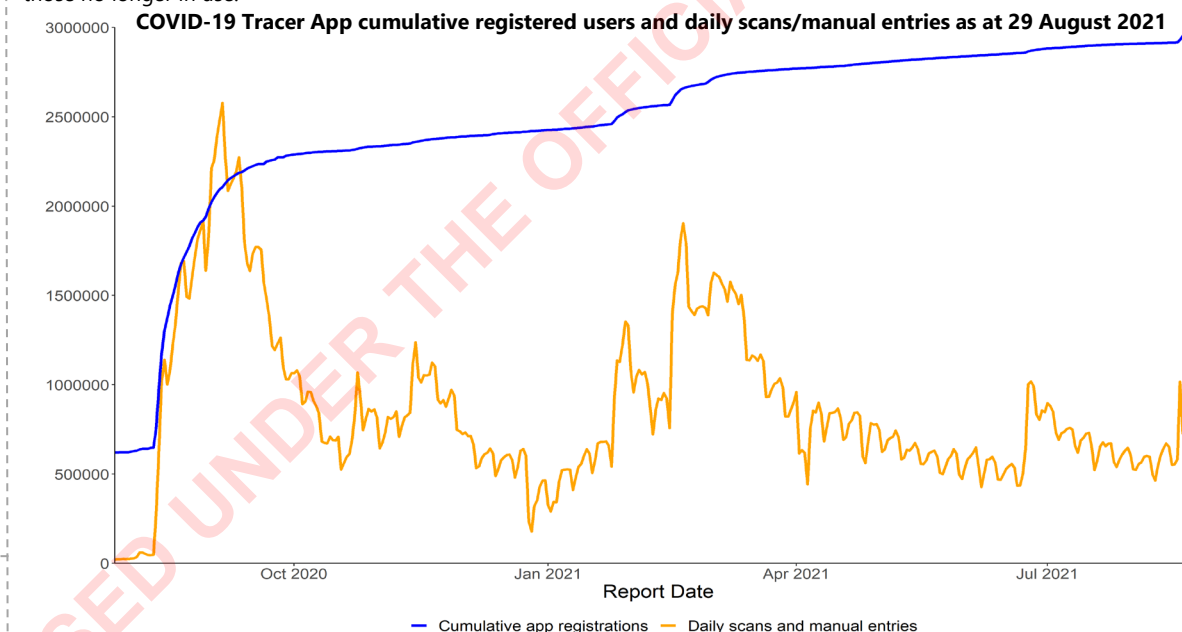
Contact tracing activity	Target	Performance
Time notification to case interview	≥80% within 24 hours	95%
Time case notification to isolation / quarantine of contact	≥80% within 48 hours	51%
Time from close contact identification to isolated/quarantined	≥80% within 24 hours	61%
Proportion of contacts traced	≥80% within 48 hours	74%

For week 17 August – 27 August (cases notified during this period) **74%** **Of contacts traced within 2 days of case notification**
Target: 80% within 2 days of case notification

*Due to the high volumes of contacts the contact tracing service is prioritising their efforts to have a focus on high-risk contacts from higher risk locations. Close plus contacts are classified as part of the higher risk contacts and are therefore the subject population for this table.

NZ COVID TRACER APP

The QR Poster Management self-service is now live with businesses able to update and resend their own posters or archive those no longer in use.



CAPACITY AT BORDER SERVICES (MIQ)

Status: All DHBs are now operating their Community MIQ service at stand-up readiness to respond to managing small numbers of high needs contacts in community settings.

OCCUPANCY & CAPACITY	AKL	WKO	ROT	WLG	CHCH	TOTAL	
Current Occupancy	Isolation: 2, 327	Isolation: 255*	Isolation: 271	Isolation: 0	Isolation: 832	Isolation: 3,685	↓
	Quarantine: 376						Quarantine: 12
Number of Community Cases	496	0	0	15	0	26	↑
Capacity for Region (MIF only)	3, 953	205	395	0	1,657	6,210	↔

*We are over capacity in Hamilton. This is due to the extremely fluid current situation we are in, and daily decisions being made about which facilities to free up space at.

PERSONAL PROTECTIVE EQUIPMENT

Status: We have sufficient PPE stocks for the health and disability workforce currently. However, ongoing vigilance is required.

The Ministry is confident it has good stocks of PPE available, with at least eight weeks of stock based on forecast usage at high pandemic volumes.

Item	Quantity on hand week commencing 29 August 21	Current Usage (weekly)	Weeks on hand (current usage)*	
Nitrile gloves	273,000,000	12,758,720	21	↓
Isolation gowns	17,000,000	1,360,120	12.5	↓
N95s	16,400,000	1,988,763	8	↓
Procedure masks	272,000,000	16,193,750	17	↓
Face shields	1,200,000	430,940	3	↓
Goggles/Glasses	1,533,443	113,187	13.5	↓
Aprons	948,010	733,100	1.3	↓
Hand sanitiser (500ml equiv)	617,432	83,897	7.4	↓

*Usage of the previous two weeks reflects significantly higher demand than normal. We do not expect this level of demand to be maintained. As a result, the weeks on hand should be seen as indicative only and probably indicates a lower level of weeks on hand than will actually be the case.

LAB TESTING

Status: Sufficient capacity for current demand.

As at 28 August, 2,951,303 tests have been conducted.

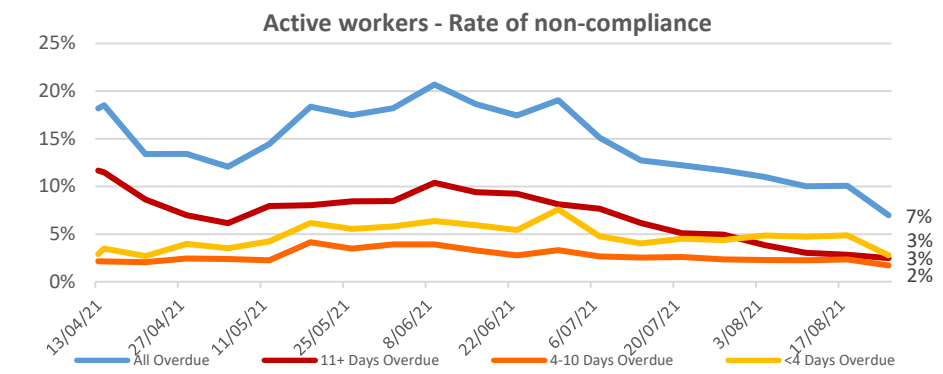
Average daily number of tests this week (rolling)	37,031	↑
Total tested across New Zealand between 22 August – 28 August	259,218	↑
NATIONAL CAPACITY		
Maximum daily testing capacity across all labs as at 28 August	46,380	↑
Test supplies in stock as at 28 August	225,994	↑

Date: 29/08/2021

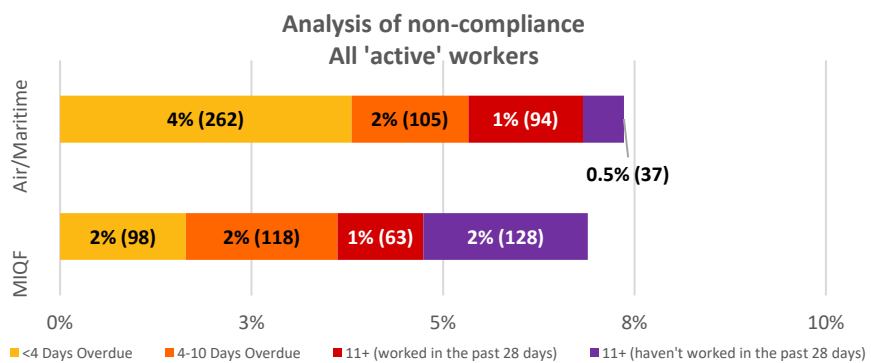
COVID-19 weekly situation update – testing



BORDER WORKERS IN THE BORDER WORKER TESTING REGISTER (BWTR)



This graph shows the trend over time of the proportion of workers that are overdue for testing and by how many days as at 25 August 2021



This graph shows the proportion of Air/Maritime and MIQF workers that are currently overdue for testing and by how many days as at 25 August 2021

PCBUs		Total Workers		Active workers		Testing Compliance			Vaccination Status		
MBIE	1 ↔	All	28,577 ↑	All	12,960 ↓	All Workers	All time	Past 28 days	Past 7 days	One Dose	5% ↑
MIQF Teams	280 ↓	MIQF	12,987 ↑	MIQF	6,069 ↓	MIQF	93% ↑	94% ↑	96% ↑	Two Doses	87% ↔
Air/Maritime	256 ↑	Air/Maritime	15,590 ↑	Other	6,891 ↑	Other	93% ↑	95% ↑	99% ↑		

- Persons Conducting Business or Undertakings (PCBU)** - There are 257 PCBUs in the BWTR of which MBIE is one. This has been stable over the past week, with just six more added.
- Compliance** - 93% of all active workers are compliant with testing (93% for MIQFs, 93% for Air/Maritime) up from 90% last week. For those working in the past 28 days, 94% are compliant (95% for MIQFs, 93% for Air/Maritime). Of those border workers working last week 96% were compliant (99% for MIQFs, 93% for Air/Maritime). The rate of all active workers 11+ days overdue has dropped from 10% on 9 June to 3% today.
- Addressing Non-Compliance** - Last week MoH contacted 45 PCBUs and 276 workers. MBIE contacted 75 PCBUs and 556 workers. MoH sent 8 directive letters to workers last week, in total 142 have now been sent. MoH issued 0 infringement notices last week, in total 53 have now been issued. MBIE escalated 20 workers to MoH this week for further action where follow up attempts have been unsuccessful in getting a worker to be tested. 82 referrals have now been made in total. All border worker monitoring and compliance activity is continuing as usual during the heightened alert levels and response period.
- Saliva testing** – 688 border workers have opted into saliva testing to date, compared to 379 at the same time last week. Saliva testing compliance figures are currently being developed.

REASONS FOR NO TEST BY DEPARTURE DATE FROM FACILITY

Reason		1 August – 7 August	8 August – 14 August	15 August – 21 August	22 August – 28 August
Total	↓	26	2	43	35
Child ⁽¹⁾	↓	11	1	16	9
Clinical reasons	↓	2	0	1	0
No consent given	↔	6	0	0	0
Other ⁽²⁾	↔	7 ⁽³⁾	1 ⁽³⁾	26 ⁽³⁾	26 ⁽³⁾

(1) "Child" generally refers to under 6 months of age
 (2) "Other" reasons include guests who had a symptomatic test instead, or had a swab in a hospital
 (3) There are a large number of day 0/1 tests entered in error as the guest was not from a high-risk country so was not required to be tested. These appear as 'other' in the data
 These figures are based on numbers of times no test is performed, not on individuals (i.e. as tests are performed on day 3 and day 12, there will be multiple times an individual may not receive a test)

TESTING AND TESTING SITES

Stream		Total tested 1 August – 7 August	Total tested 8 August – 14 August	Total tested 15 August – 21 August	Total tested 22 August – 28 August
Guest – MIF and MIQ	↑	6,134	4,970	5,126	5,250
Border Workers – MIQ	↑	97 ⁽²⁾	8 ⁽²⁾	5 ⁽²⁾	23 ⁽²⁾
Border Workers – MIF	↓	2,198	1,541	2,476	1,878
Border Workers – Air Crew	↑	193	130	131	144
Border Workers – Airport Staff	↑	873 ⁽³⁾	449 ⁽³⁾	544 ⁽³⁾	566 ⁽³⁾
Border Workers – Sea port staff	↑	1,153	1,352	1,313	1,378
Border Workers – Maritime crew	↑	212	252	144	239
Background Community Testing (GPs and other Primary Care)	↑	14,571	13,534	68,204	162,167
CBAC Testing	↑	13,740	12,402	41,602	53,226
Contact Tracing ⁽¹⁾	↑	187	399	13,858	34,347
Total	↑	39,358	35,037	133,403	259,218

(1) For the purposes of this table, contact tracing numbers are netted off from the CBAC testing volumes.
 (2) Decrease in the number of tests MoH can identify as MIQF border workers from Jet Park Auckland, as Auckland DHB may be using SURV
 (3) Decrease in the number of tests MoH can identify as airport staff, as the DHB may be using SURV codes MoH currently has no mapping for. The Ministry is working with Auckland DHB to resolve this as soon as possible.

TESTING COMMENTARY

Testing and testing sites

In response to the community outbreak, which so far has been predominantly centred in Auckland, the number of tests performed nationwide over the last two weeks have greatly increased.

Auckland District Health Board (DHB) has confirmed that to date, they have been able to increase capacity and respond to developments as required. To ensure adequate testing facilities are available, 22 testing sites for the public (6 usual Community Testing Centres (CTC) and 13 pop-up sites) are currently in operation. The Northern Regional Health Coordination Centre (NRHCC) has also set up 4 sites across the region for contacts and symptomatic people. In Wellington, 4 testing sites (3 CTCs and 1 pop-up CTC) are currently in operation.

Other DHBs across the rest of New Zealand have also noted an increased demand in testing following the announcement of the community outbreak. DHBs report that they have established additional testing sites and have capacity to further increase testing sites if required. Demand is being reviewed on a regular basis. In addition, DHBs continue to update Healthpoint and other channels of communications with new testing locations and operating hours as they change. In response to the increased demand for testing, DHBs have deployed alternative healthcare staff (e.g., allied health) to undertake COVID-19 swabbing.

Wastewater testing continues at ESR facilities across the country. In the Auckland region, SARS-CoV-2 RNA was detected in samples collected between Sunday 22 August and Wednesday 25 August. SARS-CoV-2 RNA was detected in a sample collected on Tuesday 24 August from Warkworth. In the Wellington region, SARS-CoV-2 RNA has only been detected in samples from Moa Point, Wellington between Sunday 22 August and Wednesday 25 August. In the Coromandel region, SARS-CoV-2 RNA has not been detected in samples collected from the region (19-23 August). As of 28 August 2021, ESR has conducted sampling at 118 sites across the country. This covers 3.84 million people, or over 95% of the population connected to reticulated wastewater networks.

Surveillance saliva testing of border workers commenced on 11 August. There are now 24 sites and 43 collection points up and running across the country. As of 25 August, 755 border workers have opted into saliva testing. To support the roll out of saliva testing, the Ministry of Health has continued to meet with border sites, DHBs and PCBUs across the country. It is also conducting regular Q&A sessions in which issues raised include efficacy of saliva testing compared to nasal swabs, effort of doing saliva testing and undertaking saliva testing with an irregular work shift pattern.

Border testing

Managed Isolation and Quarantine Facilities (MIQF): Auckland DHB reports that testing at Northern Managed Facilities (NMF) sites is continuing and numbers are consistent with the regular testing requirements for returnees at MIFs.

Following a decrease in the apparent number of tests that MoH can identify as border workers at managed quarantine facilities, MoH is currently working with the Jet Park based health team to resolve this data issue. Other data sources including reporting by MBIE confirm that the rates of staffing at Jet Park are around the level that would be expected and that staff compliance with testing was close to 100% last week.

Airports/Air Crew: Auckland DHB reports that there has been a significant increase in the demand for testing at the airport since Wednesday 18 August. This is being managed within the current workforce. The DHB expects this level of demand to continue over the coming days and will adjust their capacity to manage this.

Ports/ Maritime: Testing numbers at maritime ports remain stable despite the current surge event and continues to show week to week fluctuations, reflecting expected variations in workforce numbers.

DHB TESTING BY ETHNICITY

Rate per 1000 people tested for COVID-19 from 15 August – 28 August 2021

DHB of Domicile	Prioritised ethnicity MPAO				
	Maori	Pacific	Asian	Other	Total
Auckland	107.4	172.6	103.8	124.2	125.7
Bay of Plenty	35.6	62.1	33.3	45.0	42.2
Canterbury	34.6	45.8	34.7	38.2	38.3
Capital & Coast	54.1	78.6	51.3	63.0	62.1
Counties Manukau	97.1	205.0	90.2	86.2	114.8
Hawke's Bay	27.6	45.8	29.8	34.6	33.4
Hutt Valley	32.0	49.5	39.1	36.9	37.5
Lakes	32.8	60.7	45.9	40.4	39.1
MidCentral	30.2	40.4	32.5	35.2	34.5
Nelson Marlborough	26.3	50.6	29.9	32.2	32.1
Northland	35.5	42.8	37.5	40.0	38.7
South Canterbury	11.3	43.0	13.5	9.0	9.9
Southern	27.8	42.0	26.5	35.4	34.4
Tairāwhiti	27.1	32.2	51.4	34.1	31.1
Taranaki	31.1	46.7	37.3	36.7	36.1
Waikato	39.3	47.0	40.7	43.8	43.2
Wairarapa	27.5	46.9	34.5	33.0	32.7
Waitemata	114.5	178.3	134.8	122.0	128.8
West Coast	19.3	39.6	23.8	18.5	19.1
Whanganui	24.9	30.9	22.5	29.3	28.1
Total	51.8	149.0	82.5	60.0	69.0