

State Highway 33

Old Mataikotare Road

Waiohewa Stream Bridge

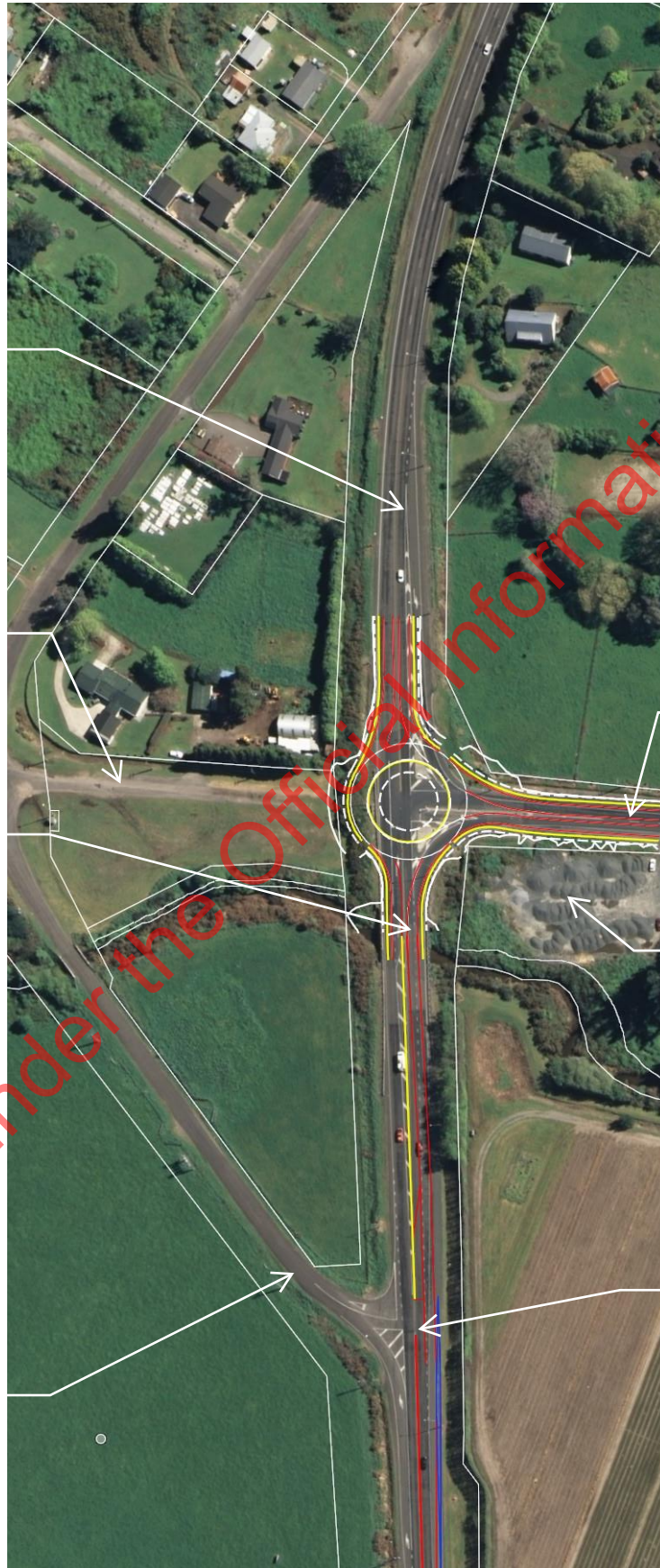
Rangiteaorere Road

State Highway 30

Crown owned gravel pit

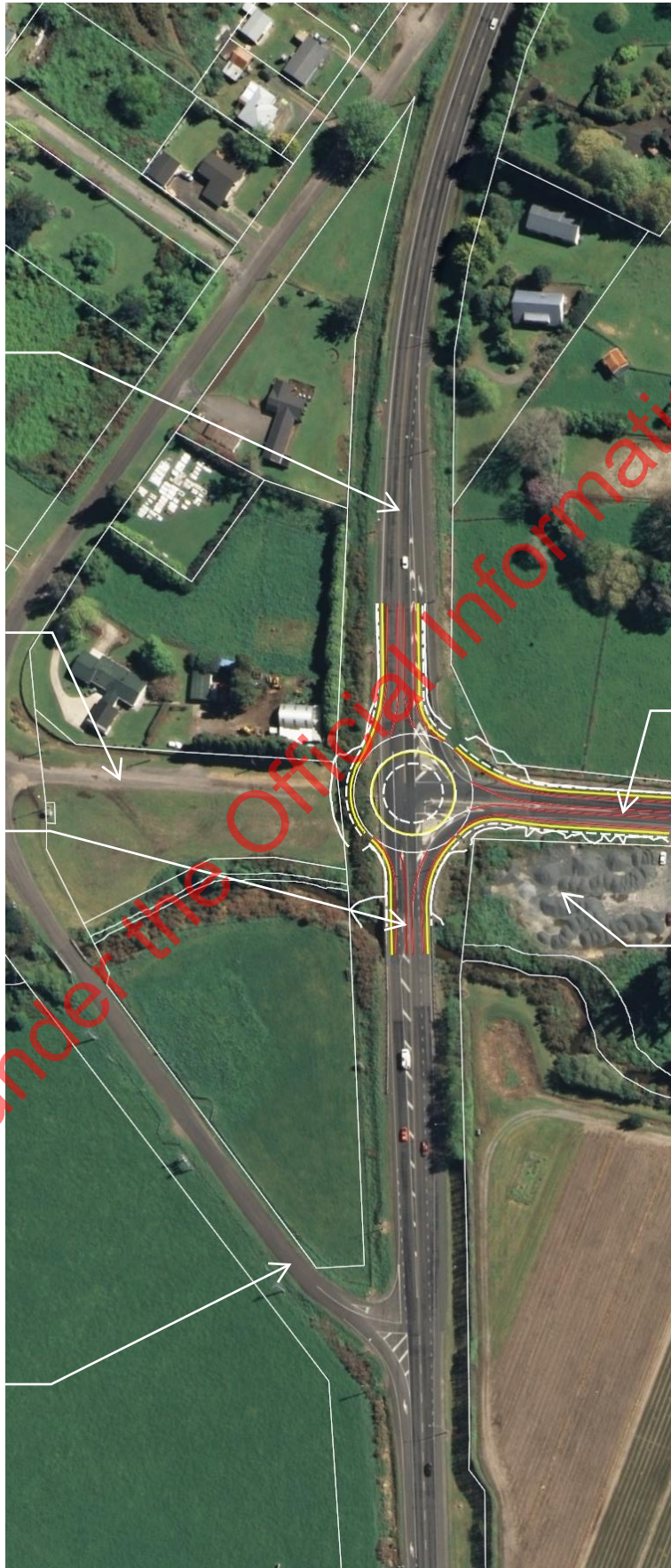
Rangiteaorere Road to be closed at intersection with State Highway 30

Option 1 – four arm roundabout, closure of Rangiteaorere Rd



Option 2 – three arm roundabout, right turn bay provided at Rangiteaorere Rd

Released under the Official Information Act 1982



State Highway 33

Old Mataikotare Road

Waiohewa Stream Bridge

Rangiteaorere Road

State Highway 30

Crown owned gravel pit

Option 3 – three arm roundabout, no changes to Rangiteaorere Rd