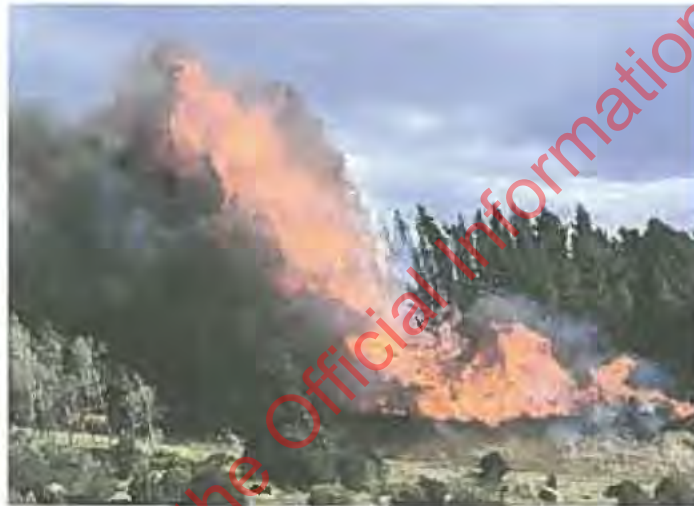


Fire Investigation Report

Vegetation Fire



Fire Authority Name: Otago Rural Fire Authority
Fire Name: Saddle Hill Fire
Fire Date: 7 October 2015
Date of Investigation: 8 October to 12 November 2015
Report Completed By: James. P. Cowan

TABLE OF CONTENTS

Part 1: Wildfire Investigating Officer	3
Part 2: Executive Summary	4
Part 3: Process of Investigation	5
Part 4: Fire Spread and Behaviour.....	9
Part 5: Visual and Physical Evidence	13
Part 6: Origin and Cause.....	13
Appendices	

Released under the Official Information Act 1982

PART 1: WILDFIRE INVESTIGATING OFFICER

Name James P. Cowan

Qualifications

- Unit Standard 10615 Investigate Origin And Cause of Vegetation Fires
- Unit Standard 20392 Protect and Preserve a Fire Scene
- National Certificate "Fire and Rescue Services" (Vegetation) L4 (2011)

Significant Fires Investigated

- 7-Mile (2010)
- Closeburn Road (2011)
- Queenstown Hill (2011)
- Rob Roy Lane (2012)
- Mount Rosa (2012)
- The Stack Fire (2012)
- Matukituki Fire (2013)
- Northburn Fire (2014) *fatality*
- Waitaki Rail Fires (2015)

Released under the Official Information Act 1982

PART 2: EXECUTIVE SUMMARY

Location	Approximately 30 m to the SE of the drive way entering 231 Morris Road, Saddle Hill, Dunedin, Otago.
Date of Ignition	7th of October 2015
Time of Ignition	Between 13:20 and 13:47
Area (ha)	Approximately 20 ha characterised by multiple spot fires.
Area and Point of Origin	Area of Origin (AOO), within 1m of point 1395194, 4914004. NZTM On the road side of the fence, under power pole number 821286.
Impact of Fire on Environment & Property	Heavy impact on residential areas. Nine structures impacted by fire including garages, houses and out buildings. Multiple gardens damaged, stock injured, damage to power infrastructure, damage to fencing and forestry blocks.
Cause of Ignition	An object has come into contact with power infrastructure causing arcing, sparks and a section of a steel lifting ring on a recloser unit to be melted. Either the object or the molten metal or both has fallen to the ground and ignited the fine fuels.
Persons or Persons Responsible for Fire	<u>Undetermined</u> Due to the unknown nature and origin of the object that has come into contact with the power infrastructure this investigation has not determined the responsible party.

PART 3: PROCESS OF INVESTIGATION

Introduction

- *Process*

I was instructed to carry out this Investigation by Stephanie Rotarangi Principal Rural Fire Officer for the Otago Rural Fire Authority (ORFA) on the 7th of October 2015 at 4:23pm.

- I travelled to Dunedin, was briefed by Graeme Still and [REDACTED] around 12:30pm, then travelled out to Saddle Hill and was met by NZFS Fire Investigator Mike Harrison and Delta senior safety advisor [REDACTED]. I started my site examination with an overview flight at 1518 hrs.
- From around 1545 to 1950 hrs, I conducted a scene examination on the ground. Both [REDACTED] and Mike Harrison joined me for differing times during this period.
- I returned to the site again on the 9th of October 2015 at around 1130 hrs after completing an aerial thermal camera survey of the fire site at first light. I continued my scene examination and carried out several phone and personal interviews with persons of interest. [REDACTED] [REDACTED] joined me for the personal interviews. I departed the site around 1830 hrs.
- I compiled my investigation notes and completed the investigation paperwork over the next few weeks.

External Examination

I was flown over the site by a pilot from Helicopters Otago who had been involved with the fire suppression and as such knew the site well. I GPS'ed sites of interest and took photographs.

Released under the Official Information Act 1982

Internal Examination

8 Oct 2015

From the external examination it became clear that the burnt area was characterised by a multitude of spot fires indicative of a fire subject to very high winds. Some of these spot fires were found to have jumped approximately 500 m and in one case had jumped 100 m across the main motorway. It was also obvious the most likely origin was near to 231 Morris road in a stand of gum trees.

On approach to this address I noticed a small branch that had been blown onto the telephone wires (same pole and line as ET2 power lines) approx. 100 m before 231 Morris road. This indicated to me the ability for small branches to have been blown onto power infrastructure (photo 917).

Joined by Mike Harrison Fire Investigator NZFS and [REDACTED] Senior Safety Advisor Delta I began my internal examination from the drive way at 231 Morris Road.

From approx 30 m past the entrance to 231 Morris road I observed easily identifiable burn and char patterns on the gum trees showing a fire advancing to the SE. We followed the initial fire run for around 160 m to where it ran out of fuel and stopped at a green grass grazed paddock. From this point we identified multiple pieces of gum bark, charred gum leaves and char marks on the ground in the direction the fire was advancing.

We followed these for approx 103 m to where the next fire had started behind the house at 205 Morris road. I flagged, photographed and GPS'd these examples of ember transfer to help determine if the fire could have spotted from the gum plantation to the area behind the house at 205 Morris road. It was evident that this was the case.

I then back tracked the main run into the stand of Gums and back to an area around power pole 821286 on the line known as East Taieri 2 (ET2).

This pole has a recloser (ID 2339R) fitted that acts essentially like a large fuse in the event of a fault. This recloser is monitored and fault data specific to it was subsequently provided by Delta (See Appendix 3).

I noticed that the recloser had charring on it and a melted lifting ring. This was subsequently confirmed by Delta and photos of the damage were provided. I continued to observe, photograph and note burn and char patterns that supported an area of origin (AOO) on the road side of the fence around pole 821286.

At around 1900 hr, I drove up and spoke to the landowners of [REDACTED]. They were not on site at the time of ignition. They have owned the property for approx. two years and stated they had not had any contact with the power company re line trimming and no trim had happened during their tenure.

I left for the day around 1950 hrs

9 Oct 2015

I returned to site around 1100 hrs after carrying out an aerial thermal camera flight to determine hotspots. This further aerial flight helped to give me further overview to the fire spread.

I was joined at this time by fellow ORFA fire investigator Graeme Still. I walked him through my findings and we discussed other possible causes, trim zones, trimming and burn and char patterns. His observations supported the location of the AOO and the main fire runs and spread. He made the comment that the Dunback/Stoneburn fire some 55km away to the NE that he had been managing at the same time as the Saddle hill blaze, had very similar characteristics, terrain, slope and flame lengths and had been spotting very long distances in one case around 1 km.

After Graeme left, I was joined by [REDACTED] from Delta where we met Witness 4 on site around 1140 hrs and went through what he saw (see Witness Observations).

At around 1245 hrs [REDACTED] and I then drove into Mosgiel to interview Witness 3.

On my return around 1400 hr, [REDACTED] departed and I spent until around 1800 hrs reworking the AOO observing, notating and photographing burn and char patterns. I also worked through the elimination of other possible causes.

Of special note was the sequential buildup of white ash on several iron fencing standards from the AOO leading away to the SE and corresponding increasing levels of oxidation on the fence wires. This combined with unburnt bracken fern left hanging in the fence provided very strong evidence to support my AOO findings.

Around the AOO, I identified an electric fence wire that ran parallel with the ET2 powerlines, I noticed this was not attached to a live wire at this end. I tracked it back to the SE to where it was attached to another fence, and this again was not a live connection. I also noted several glass bottles around the AOO and the remains of a possum.

Some old trimming of branches on the ET2 powerline side of the gums was evident, however vegetation from the gums was within 0.5 m of the lines on pole 821286 above the AOO. Delta have subsequently told me they have records to show that trimming had been carried out on that line (no report supplied).

Typical of gum trees, long strands of bark were evident hung up in the trees. These are known to provide a high potential for spot fires (See photo 997).

The general Saddle Hill area is highly populated and I had several conversations with locals and witness during my two days on the scene.

Area of origin
General
Specific Point

Burn and Char patterns show the AOO to be on the road side of the fence under pole 821286 fitted with recloser 2339R.

Area of Origin (AOO), within 1m of point 1395194, 4914004. NZTM

Main fire runs

The main run is reasonably narrow indicative of very strong winds and is to the SE. A secondary and much shorter run is to the South, following the slope. The main run is wind driven and continues up and over Saddle Hill characterized by multiple spot fires. Once the wind changed direction some shorter secondary runs are visible at varying areas around the fire ground, most noticeably the one that ran to the NE and jumped the motorway (see photo 876).

Spot fires

Multiple spot fires are evident all over the fireground. Ember transfer was at an extreme level due to winds approaching 100km/hr. There are large islands and fingers of unburnt fuel throughout the fireground clearly showing the spotting. The greatest spotting distance that I located was approx. 500m to the SE of Saddle Hill road (see photo 876).

The effects of ember transfer and spotting were very evident in the photos taken of the house at 47 Coalstage Road, where three small trees on either side of the front door on a gravel drive area were burnt (see photo 003).

Gum trees are known for their high potential to generate spot fires and as calculated using an Mk5 McArthur Meter the spotting potential was 1.7km.

Indicated cause

Given the statements provided by witnesses, the nature of the extremely high winds, the damage to the recloser with the melted steel lifting ring, the fault data provided by Delta and the burn and char patterns leading back to an area under pole 821286 fitted with recloser 2339R. It is evident that an object has come into contact with the recloser causing arcing, sparks and a section of a steel lifting ring to be melted. Either the object or the molten metal or both has fallen to the ground and ignited the fine fuels.

Released under the Official Information Act 1982

PART 4: FIRE SPREAD AND BEHAVIOUR

Weather Factors Although in spring time with DC's and BUI's in the lower brackets, on this day FWI's across most of Otago were well over 30. This was due to an extremely windy day with temperatures in the high 20's and RH's as low as 16%.

The weather on the day of the fire as taken from the weather station 12km away at the Dunedin airport at 1300 hrs showed the temperature as 29 deg C, Relative Humidity at 16% and wind from the NW at 60km/hr gusting to 90km/hr.

The wind changed to the SW around 1515 hrs and dropped to 16 deg C with an RH of 60% within 30 minutes. Wind continued to blow at 50km/hr, gusting 60km/hr. Drizzle and light rain began to fall shortly after, with around 4mm accumulated over the next couple of hours.

The fire was wind driven with embers spotting up to 500 m and igniting any fine fuels dried by the very low RH and extreme winds.

The FFMC for the day was 94, BUI 30, FWI 40.

Fuel Factors The fuel around the area of origin was predominantly bracken fern up to 1m high, leading out into a stand of gum trees with a moderate litter of leaves and bark underneath and a high bark level.

The fire ground was characterized by semi urban areas with green paddocks, shelterbelts, pockets of gorse and scrub, residential gardens and small forestry blocks and native scrub.

The wind driven embers ignited any available fuels spotting up to 500m and leaving large areas of predominantly green grass (see photo 876).

Topographical Factors The initial run was on a very mild slope, however given the extreme winds the slope had little effect. Although some of the subsequent runs were on slopes, the wind was the driving factor.

Burn and Char Patterns

Burn and char patterns are evident and obvious in the gum plantation supporting the AOO. The macro indicators include an angle of char greater than the slope across the whole gum plantation, flame wrap on the gum trunks and freeze on the leaves of the shrubs in the vicinity of the gums.

Micro indicators include white ash on the iron standards increasing in a series of three standards, corresponding oxidization of the fence wire increasing with the fire intensity (I) and charring and cupping on the bracken fern stems (see photo log).

Fire Behaviour

Given the non-continuous and relatively green fuels across the fire ground it is evident that this fire was very much wind driven and was spread by embers. It was characterized by multiple short runs dependent on fuel arrangement and wind direction. Short distance Rates of Spread were very high as calculated for the following fuels and sites.

- Stand of Gums at 231 Morris Rd. Using the McArthur Forest Fire Danger Meter with an FDI of 50, the slope adjusted ROS is calculated at 0.7km/hr with flame heights of 8m and a potential for spotting of 1.7 km. 160m run @ .7km/hr- time taken = 14 minutes.
- Stand of mature pines above 205 Morris Rd. (Chicks House). 200m Run @ approx. 4km/hr- time taken = 3 minutes
- Stand of young pines to the South of 43 Coalstage road. 400m @ approx. 2.2km/hr – time taken = 11 minutes

Released under the Official Information Act 1982

Witness
Observations

See Witness Identification Log Appendix 7 for personal contacts and details.

Witness 1- Landowners of [REDACTED]

I visited the owners of [REDACTED] late in the afternoon of the 8th of October and called them again on the 16th of October. They were not on site when the fire started however they passed on the details of two friends who were on site (See Witness 2). They have owned the property for about two years. The gums have not been trimmed during their tenure and they have not been contacted by the power company regarding trimming their gums trees. They confirmed that the electric fence running parallel to the road was not connected at the time of the fire.

Witness 2- Friends of the Landowner of [REDACTED]

I called Witness 2 on the 9th of November, he arrived at the site of the fire when it was burning in the gum plantation of [REDACTED] and also on the hill behind 205 Morris Road. He said the greater fire intensity was on the hill behind 205 Morris road and he thought it had started back towards the drive of 231 Morris Road.

Witness 3- Local Mosgiel Businessman who saw the smoke from Gladstone Road

I spoke to Witness 3 via phone on the 8 October around 2110 hrs and again in person around midday on the 9 October.

He said his power flickered about 1345 hrs, he subsequently went outside and saw "white smoke from by the gum trees by the concrete works", he said he jumped up on the deck of his truck to get a better view. He said after a short time the smoke went black, he called his mate at 13:52 to tell him. After 5 minutes he said he saw the fire jump onto the face above Chicks House and up the face.

During the site visit on the 9 October he showed us his security camera footage, the camera is not pointing directly at Saddle Hill but it can be seen in the top right-hand corner of the screen. The gum trees are also not visible so the following smoke observations will be slightly delayed from the actual time the smoke was visible. The camera has a timestamp that he believes is 2 minutes fast.

Looking at the footage you can see that white smoke appears at around 13.52 (adjusted for timestamp error), trees and foliage are being thrashed around as the wind is clearly very strong.

By 13.56 the fire still does not appear to have run up the hill by Chicks.
At 14:00 heavy smoke obscures the area indicative of a big fire run.

Witness 4- Passerby who saw smoke and came upon the scene very early

I spoke to Witness 4 by phone on the 9 October and again on site at 1140 hrs on the same day. He initially saw the smoke from the motorway at around 1345 hr. He drove around to the site at saw the fire burning in the gum plantation around the "transformer" (in fact the recloser). He said the fire was only about 10m long when he first reached the site. He also saw a young woman on site in a Honda Accord (I have not identified this witness).

He said wind was very strong from the North west. Whilst on site I drew a picture with help from this witness to show where the fire was at the time he arrived (available in my original notes.) His recollections strongly support a fire start in the vicinity of the Recloser unit.

Witness 5- Delta employee

Delta have an audio recording from a staff member interviewed as part of their investigation process stating that the fire was in the vicinity of the recloser and was too big to handle with fire extinguishers and should be called in to 111. (I do not have a copy or a transcript of this recording)

Released under the Official Information Act 1982

PART 5: VISUAL AND PHYSICAL EVIDENCE

Visual Images Photos supplied by [REDACTED] from Delta of the damage to the recloser, photos taken by me of the site both aerial and ground and other photos of the fire (unknown sources). All relevant photos attached in photo log.

Physical Site Evidence Damage to the recloser in the form of carboning, charring, melting and molten metal splattered over parts of it. Ignition locations have been logged by GPS.

PART 6: ORIGIN AND CAUSE

Determination of the general area and point of origin Witness statements, burn and char patterns and the weather all point to an AOO in the general vicinity of the recloser unit approx 30m to the SE of the drive way entering 231 Morris Road, Saddle Hill, Dunedin, Otago.

The Point or Origin was narrowed down to an area within one meter of point 1395194, 4914004 NZTM by observing burn and char patterns showing the fire running away from this site to the SE. This is supported by backing and flanking indicators as shown in Appendix 4 Photo log.

Released under the Official Information Act 1982

Elimination of possible causes

Other causes that were eliminated include:

- An electric fence running parallel to Morris road near to the AOO. This fence was not connected at the time of ignition.
- Glass bottles around the AOO. These were covered by bracken prior to the fire and were only made obvious once the fuel was burnt away. On this basis sunlight would have been very unlikely to have reached the bottles in such a manner to create an ignition.
- The weather was fine and no lightening was reported in this location around the time of ignition.
- The fire started around 5m from the road edge, this is not indicative of a cigarette ignition and no cigarettes were identified in the AOO.
- Nothing reported by the witnesses or found on the site would indicate arson.
- Remains of the possum near the AOO were very old, bones only, no fur. This possum died some time before this fire.

I was asked by Delta as part of this investigation whether the damage to the recloser and subsequent power outage could have been caused by smoke causing the arcing. Given the location of the recloser in relation to the AOO, the damage to the recloser and the very strong winds, I do not believe this is at all likely. Many power poles on the fire ground were damaged but in most cases it is likely that this was from ember transfer. Ember transfer was also found as a significant cause of damage to power infrastructure as identified in the Fire Investigation compiled by Martin Jansen for the Saddle Hill fire M411602 on 24th February 2004.

Cause or most likely cause of fire

This fire was caused when by an unidentified object has come into contact with power infrastructure causing arcing, sparks and a section of a steel lifting ring on a recloser unit to be melted. Either the object or the molten metal or both has fallen to the ground and ignited the fine fuels.

Conclusions

Given the fire scene observations, witness statements, fault data, weather conditions (extreme winds), the photographed evidence of branches blown into the lines and the obvious physical damage to the recloser unit. It is my conclusion that an object most likely a branch or bark off the nearby gum trees has been blown onto the recloser unit causing arcing and the very obvious melting of the steel lifting ring.

This melting process and subsequent splattering of molten debris onto parts of the recloser unit has taken considerable electrical current and would have generated considerable heat, most certainly enough to ignite fuels under this event.

The stand of gums has then caught fire and as calculated this has resulted in spot fires igniting the fuel behind Chicks house, from there the fire has really picked up speed and headed upslope impacting on the properties of 47 and 43 Coalstage road.

From here, the fire has carried on up through patches of scrub and stands of pines to impact on the properties on Saddle Hill road and over the ridge to the SE. About this time the SW wind change has arrived pushing the many fires back towards the highway and spotting over to the property at Chain Hills Rd.

Given the non-continuous and relatively green fuels across the fire ground it is evident that this fire was wind driven and was spread by embers. It was characterized by multiple short runs dependent on fuel arrangement and wind direction. Had it not been for the extreme winds this fire is unlikely to have burnt passed the gum plantation.

This was a very fast moving and dangerous fire and had it occurred in summer the results would have been devastating, dangerous to control with serious harm a probability.

It is evident by scarring on the trees around the Area or Origin and along Morris Road that at some point trimming had been carried out to keep vegetation clear of the power lines, however it is obvious that this practice has not been kept up to date as vegetation was within 500mm of touching the power lines in multiple places. The "Trim Zone" has not been maintained, however in this case I was unable to determine if this has likely contributed to the event that has caused this fire.

Recommendations That "Trim Zones" be maintained at all times to minimize the risk of fire.

 That education for rural interface communities continues to highlight the need for defensible space.

 That the planting of gums be avoided next to powerlines.

Investigation and report completed by:

Name Jamie Cowan
 Deputy Principal Rural Fire Officer
 Otago Rural Fire Authority
 Phone 027 530 4590

Released under the Official Information Act 1982

Appendix 1 MAPS

Appendix 2 Daily Fire Weather Data

Appendix 3 Delta Fault Data

Appendix 4 Photo Log and Photos

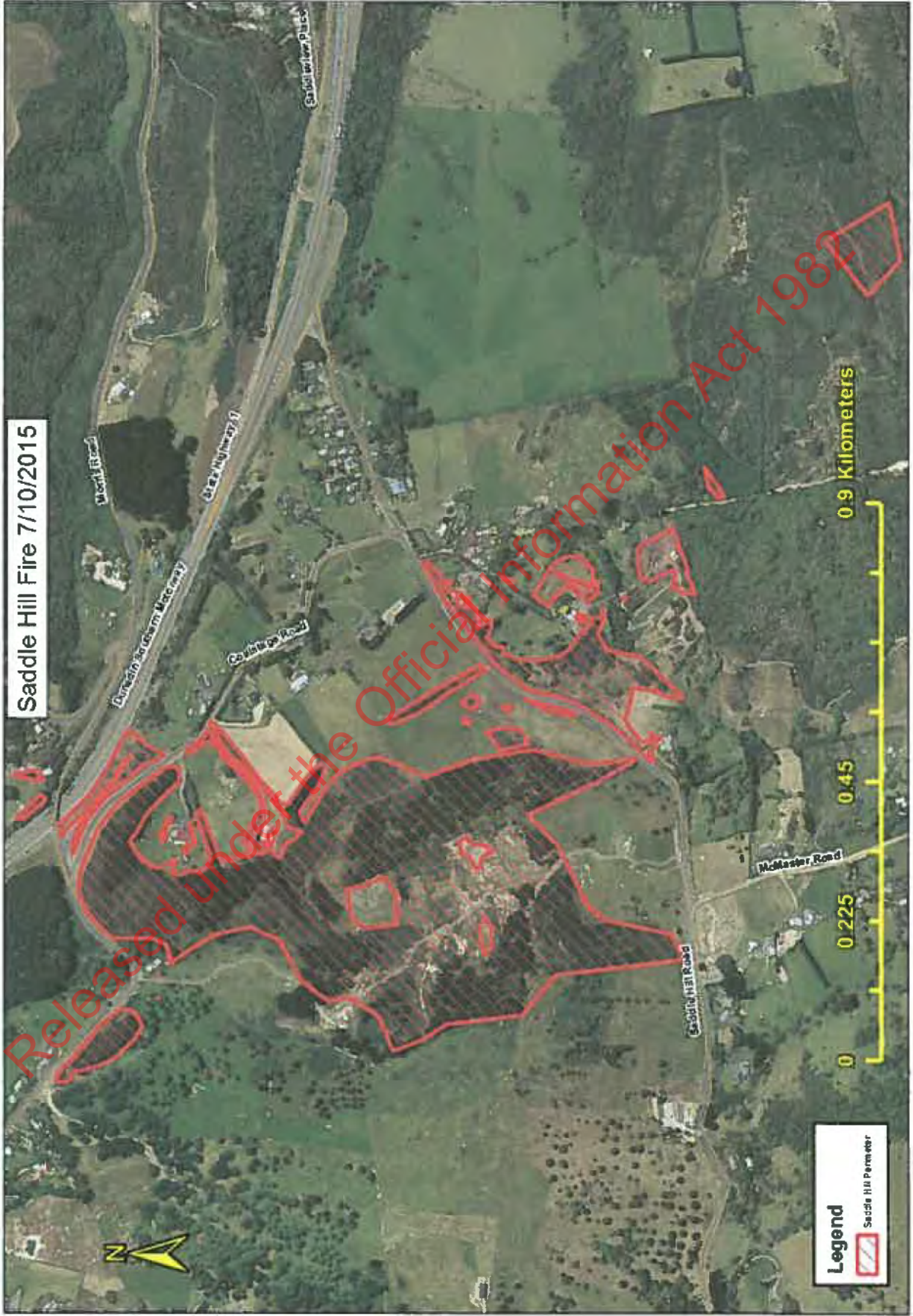
Appendix 5 ICAD Report

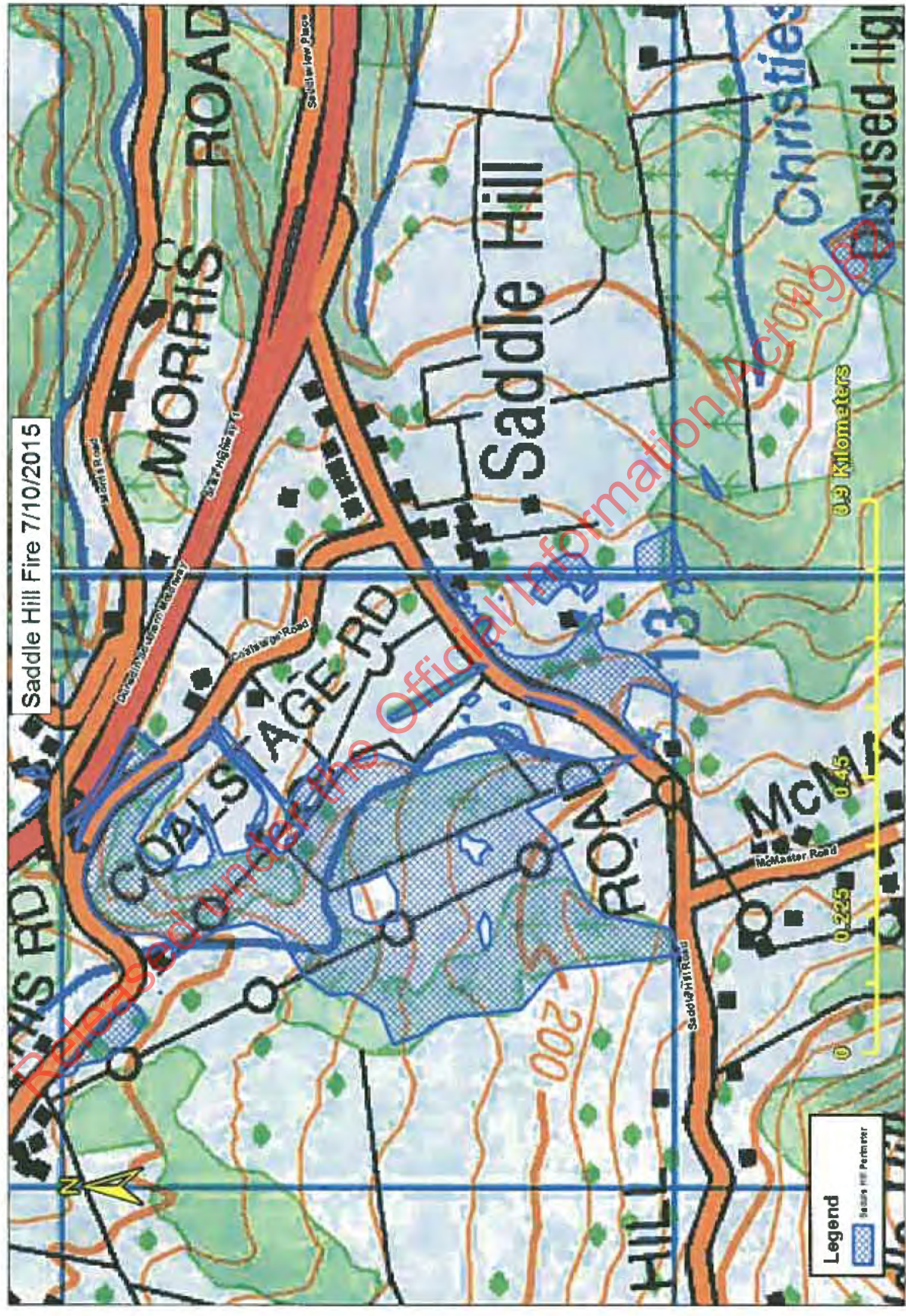
Appendix 6 Witness Identification log.

Copies of my original notes (On file if required)

Released under the Official Information Act 1982

Appendix 1 MAPS





Saddle Hill Fire 7/10/2015

Legend
 Saddle Hill Fire Perimeter

0.9 Kilometers

Appendix 2 Fire Weather

Otago														Wednesday, 07 October 2015 NZDT													
STATION NAME	FOREST	SCRUB	GRASS	FFMC	DMC	DC	ISI	BUJ	FWI	TEMP	RH	DIR	WSP	RN24	GC%	STAT											
Tara Hills	E	E	V	92	47	209	68.8	60	83.2	20.9	24	320	65	0.0	50	Aut											
Naseby Forest	H	E	E	92	23	57	71.0	23	57.0	20.5	24	297	80	0.0	60	Aut											
Wanaka	E	E	E	91	26	199	43.5	40	52.9	20.0	28	310	44	0.0	70	Aut											
Oamaru	E	E	V	95	33	354	37.6	53	55.0	25.5	17	350	30	0.0	60	Aut											
Windsor	E	E	E	94	45	406	63.7	71	85.3	26.0	21	308	43	0.0	60	Aut											
Queenstown Aero	M	E	H	89	13	42	11.1	15	13.1	20.9	31	310	21	0.0	70	Aut											
Cromwell	E	E	E	95	45	440	44.5	71	69.2	26.2	18	322	34	0.0	65	Aut											
Dansey Pass	E	E	V	94	32	163	72.3	43	74.4	24.2	18	304	46	0.0	50	Aut											
Lauder	E	E	E	94	37	309	83.1	58	91.3	23.3	20	-	66	0.0	65	Sub											
Oamaru Aero	E	E	V	94	27	279	30.0	44	43.7	26.8	22	300	28	0.0	60	Aut											
Ranfurly	E	E	V	93	38	261	53.9	56	71.6	23.1	23	316	44	0.0	50	Aut											
Clyde	E	E	E	95	44	544	51.9	73	76.8	26.5	18	308	37	0.0	65	Aut											
Herbert	H	E	V	93	16	31	60.9	16	45.0	21.9	21	321	45	0.0	50	Aut											
Butchers Dam	E	E	E	95	39	602	96.8	67	106.0	24.4	17	311	76	0.0	65	Aut											
Rock and Pillar	E	E	V	93	41	338	61.4	62	79.2	24.3	25	294	48	0.0	50	Aut											
Macrae's	E	E	V	94	25	180	85.2	37	77.2	22.6	19	-	66	0.0	50	Sub											
Buckland	E	E	V	93	29	169	72.2	41	72.9	26.4	24	305	53	0.0	50	Aut											
Glendhu	H	E	V	93	17	45	61.4	18	46.8	23.6	21	280	45	0.0	50	Aut											
Traquair	H	E	V	92	16	52	71.8	18	52.4	24.0	26	314	80	0.0	50	Aut											
Dunedin Aero	V	E	H	94	25	93	33.4	30	39.5	28.4	22	310	30	0.0	50	Aut											
Taparui	V	E	H	92	20	226	52.2	33	55.0	25.0	27	314	44	0.0	50	Aut											
Waipahi	M	E	H	89	11	80	34.3	16	30.9	22.9	40	232	45	0.0	50	Aut											
Glentled	M	E	H	93	12	36	50.4	13	37.1	26.6	25	282	46	0.0	50	Aut											
Nugget Point	M	E	H	90	11	31	42.9	12	31.9	23.1	33	290	46	0.0	50	Aut											

Released under the Official Information Act 1982

Appendix 3 Delta Fault data

ET2 CB, ET3 CB and Recloser
2339R Sequence of Event
Summary for 7/10/15

Version 1.0



ET2 CB, ET3 CB and Recloser 2339R Sequence of Event Summary for 7/10/15

1. General Information

1.1. Network Arrangement

A single line diagram is shown in Figure 1. This shows the East Taieri Feeder 2 (ET2) circuit breaker and the East Taieri Feeder 3 (ET3) circuit breaker located at the East Taieri Zone Substation. Both ET2 and ET3 travel over Saddle Hill.

There is also a recloser 2339R located on Morris road downstream of the ET2 circuit breaker. The transformers, line spurs etc have been omitted for clarity.

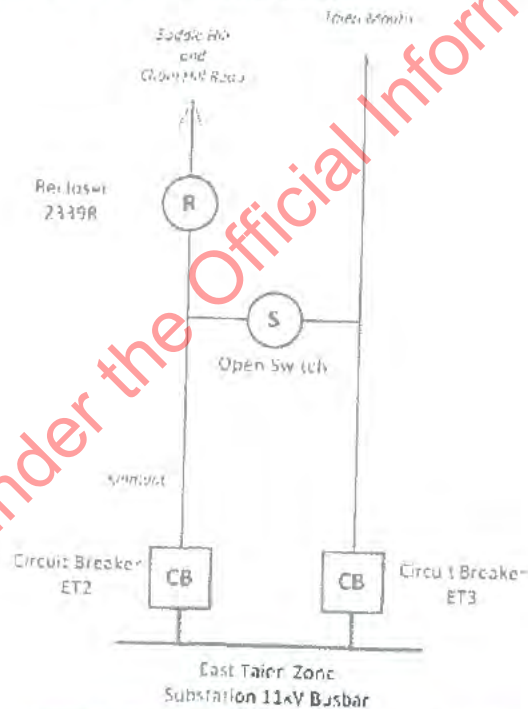


Figure 1 - SLD of Relevant East Taieri 11kV Feeders

There is a switch between ET2 and ET3 that is normally open. The switch was open for the duration of the events outlined in section 3.

A single line diagram is not a complete electrical diagram as it only shows a single line where the line in reality consists of three conductors (phases).

1.2. Auto Reclosing

An automatic reclosing system is a system that can detect over-currents and earth faults associated with a circuit fault, interrupt the fault currents, and reclose automatically to re-energise the circuit. If the fault is permanent the automatic reclosing system will lockout after a pre-set number of recloses to isolate the faulted circuit from the rest of the network. Aurora Energy will typically set one reclose operation.

The time between the recloser or circuit breaker tripping (opening) and reclosing (closing) is known as the dead time. Aurora will typically set a dead time of 5s

If a reclose is completed successfully there must be a period in which the recloser waits until it reverts back to the beginning of its reclosing sequence. This time is known as the reclaim time and resets the sequence coordination (reclose counter to lockout).

2. Protection Record Capability

The ET2 and ET3 circuit breakers are monitored and operated by Reyrolle electromechanical relays. ET2 CB protection consists of overcurrent and earth fault protection with automatic reclosing. The East Taieri zone substation has accurate time stamping installed that accurately records the time events occurred.

The 2339R recloser is monitored and operated by a Cooper Form 6 digital relay. This relay offers time stamping that is synchronised with our SCADA system. The relay also records waveforms when events are triggered.

Released under the Official Information Act 1982

ET2 CB and Recloser 2339R
Sequence of Event Summary for
7/10/15

Version 1.0

3. Sequence of Events

Table 1 is an amalgamation of the SCADA log and the sequence of event file retrieved from the 2339R recloser.

Table 1 - Relevant Events recorded for ET2, ET3 and 2339R on the 7/10/15

Date and Time	Equipment	Operation	Information
7/10/2015 13:20:59.548	Circuit Breaker ET2	Protection Start	Did not trip as 2339R cleared the fault.
7/10/2015 13:20:59.572	Recloser 2339R	Trip	Earth Fault (2676A).
7/10/2015 13:21:04.570	Recloser 2339R	reclosed	Auto reclosed 5s later as expected.
7/10/2015 13:23:04.765	Recloser 2339R	Sequence Reset	Reverted to normal following 2min reclaim time as expected.
7/10/2015 13:24:49.038	Recloser 2339R	Protection Start	Phase to phase fault detected but self-extinguished (181A).
7/10/2015 13:24:50.214	Recloser 2339R	Trip	Phase to phase fault (357A); recloser locked out.
7/10/2015 13:44:59.829	Circuit Breaker ET2	Trip	Phase to Phase and earth fault.
7/10/2015 13:45:04	Circuit Breaker ET2	reclosed	Auto reclosed as expected. Accurate timing not available.
7/10/2015 13:45:04.469	Circuit Breaker ET2	Trip	Phase to phase fault; Circuit breaker locked out.
7/10/2015 14:34:49.994	Circuit Breaker ET3	Trip	Phase to phase fault.
7/10/2015 14:35:07	Circuit Breaker ET3	reclosed	Auto reclosed as expected. Accurate timing not available.

Appendix 4

Saddle Hill Fire Photo log index.

Overview Map 1

Photos 876 – Aerial photo showing the entire fire ground and extend of spot fires.

Overview Map 2. Initial runs and spotting.

Photo 910–AOO, the initial fire run advancing to the SE, the angle of Char greater than the slope, a clear indication of the fires initial run direction.

Photos 917 – Approaching the scene, Power pole just prior to 231 Morris road showing branches blown up into the attached telephone line.

Photos 919 – Approaching the scene to the NW of the entrance to 231 Morris Road. AOO pole visible with Delta staff downloading trip data from the Recloser unit.

Photos 915 – Entrance to 231 Morris Road.

Photos 921 –AOO pole 821286.

Photos 3 (4) Delta – Recloser unit on AOO pole 821286. Shows damage, carboning and charring to Recloser.

Photos 5 (2) Delta – Recloser unit on AOO pole 821286. Shows damage, carboning and charring to Recloser.

Photos 5 (4) Delta – Recloser unit on AOO pole 821286. Shows melted lifting ring and splatter of molten metal onto Recloser components.

Photos 1669 Delta – Angle of char greater than the slope, shows advancing fire approx. 50m to the SE of AOO.

Photos 923– Burnt gum bark Spot fire approx 14m out in front of the advancing fire at the end of the Gum plantation.

Photos 926– Spot fire approx 15m out in front of the advancing fire at the end of the Gum plantation.

2062982

Photos 923– Burnt gum bark out in front of the advancing fire at the end of the Gum plantation.

Photos 931– Burnt gum leaves approx. 30m out in front of the advancing fire at the end of the Gum plantation.

Photos 935– Spot fire 65m out in front of the advancing fire past the end of the Gum plantation.

Photos 934– Spot fires, burnt gum leaves and bark flagged out in front of the advancing fire past the end of the Gum plantation.

Photos 940– Ember transfer evident by this burning spar on the hill behind 205 Morris road. (Chicks house).

Photos 946– AOO showing low intensity and remaining fuel in the fence burnt off at the base. Flanking/Transition.

Photo 951– Shows Pole 821286, the AOO, the initial fire run advancing to the SE, the angle of oxidation and identifies the 3 iron fencing standards used in the following slides.

Photo 952– Shows the angle of oxidation greater than the slope showing a fire advancing to the SE from the AOO. (The higher the Intensity the greater the oxidation)

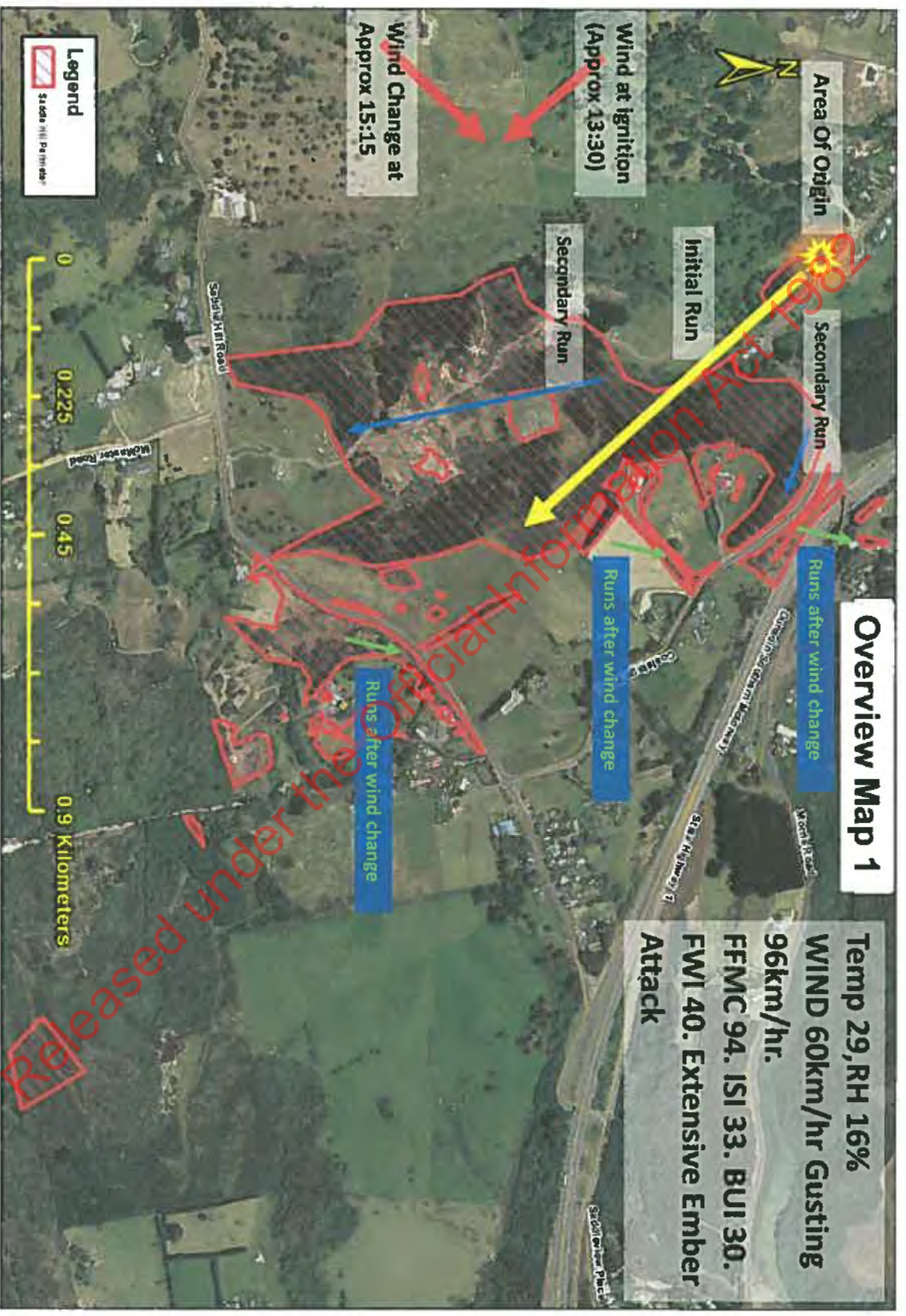
Photos 956,958,960 – Shows the sequential build up of white ash on the Iron fencing standards and corresponding oxidising on the wires. (Viewed from the advancing side NW)

Photos 957,959,961 – Shows the sequential build up of soot on the Iron fencing standards and corresponding oxidising on the wires. (Viewed from the protected side SE)

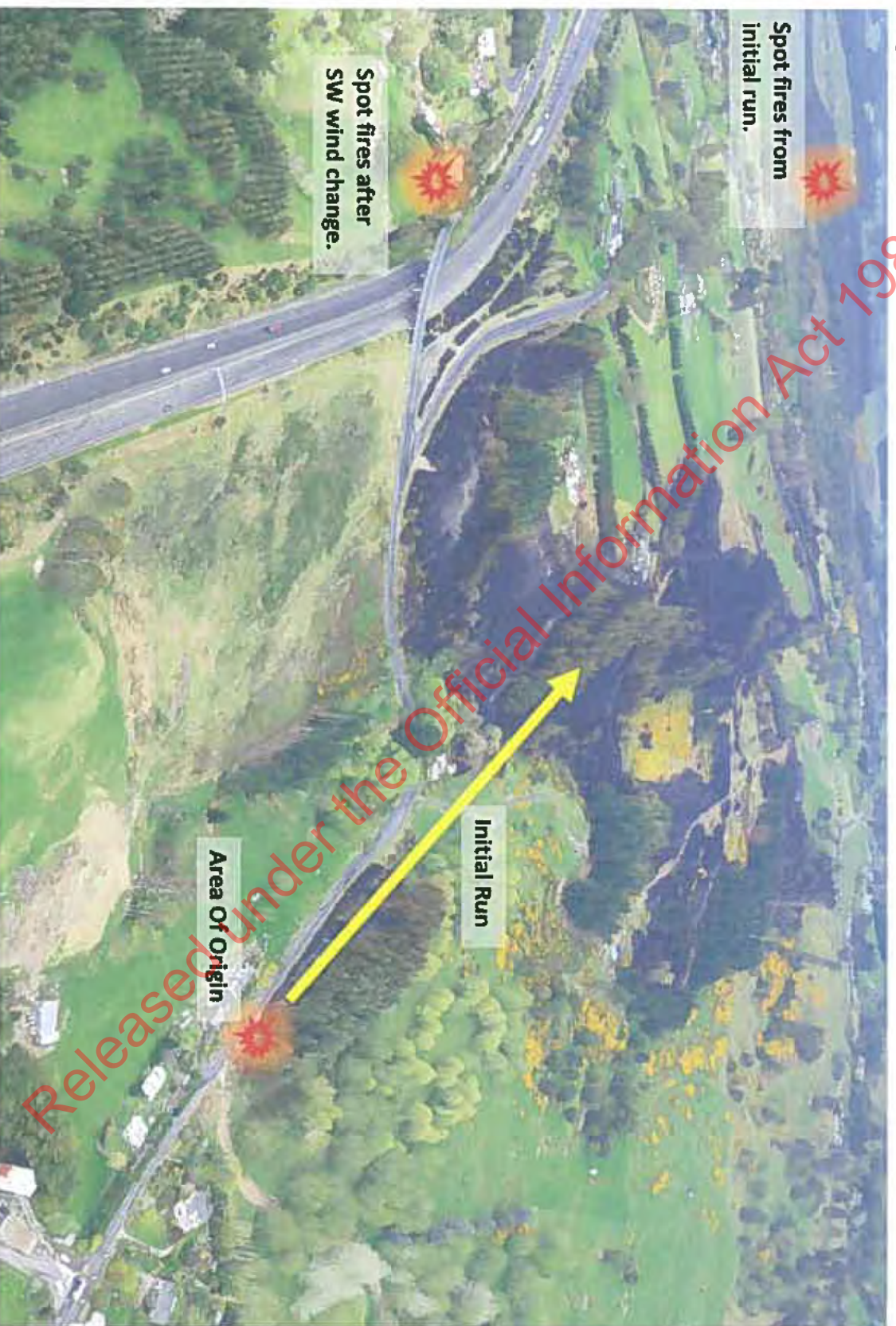
Photos 003 – Fire damaged trees either side of the front door on 47 Coalstage road. Evidence of significant ember attack.

Photos 006 – Freeze on trees on the drive near 47 Coalstage road, showing the wind direction from the SW after the wind change.

- 2025072982
- Photos 979 – Old trimming scars on the Gum tree closest to the Recluser (AOO) pole showing historic trimming.
- Photos 976 – Looking up the Recluser (AOO) pole showing vegetation within 500mm of line.
- Photos 945 – Further non maintained trim zones on ET2 above 205 Morris Rd.
- Photos 997 – Shows the Heavy build up of bark in the gum trees. This contributes to spotting and also could have been blown onto the lines.
- Photos 998 – Long strips of bark near the AOO from the gum trees. This contributes to spotting and also could have been blown onto the lines.
- Photos 962 – View from [REDACTED] property where he watched the fire.
- Photos 863 – 43 Coalstage Rd. Damage to property, garage destroyed.
- Photos 1621 Delta- 43 Coalstage Rd. Damage to car in the garage.
- Photos 1636 Delta - 43 Coalstage Rd. Spalling on concrete water tank and other plastic tanks melted down to water level.



Photos 876 – Aerial photo showing the entire fire ground and extend of spot fires.



Overview Map 2. Initial runs and spotting.

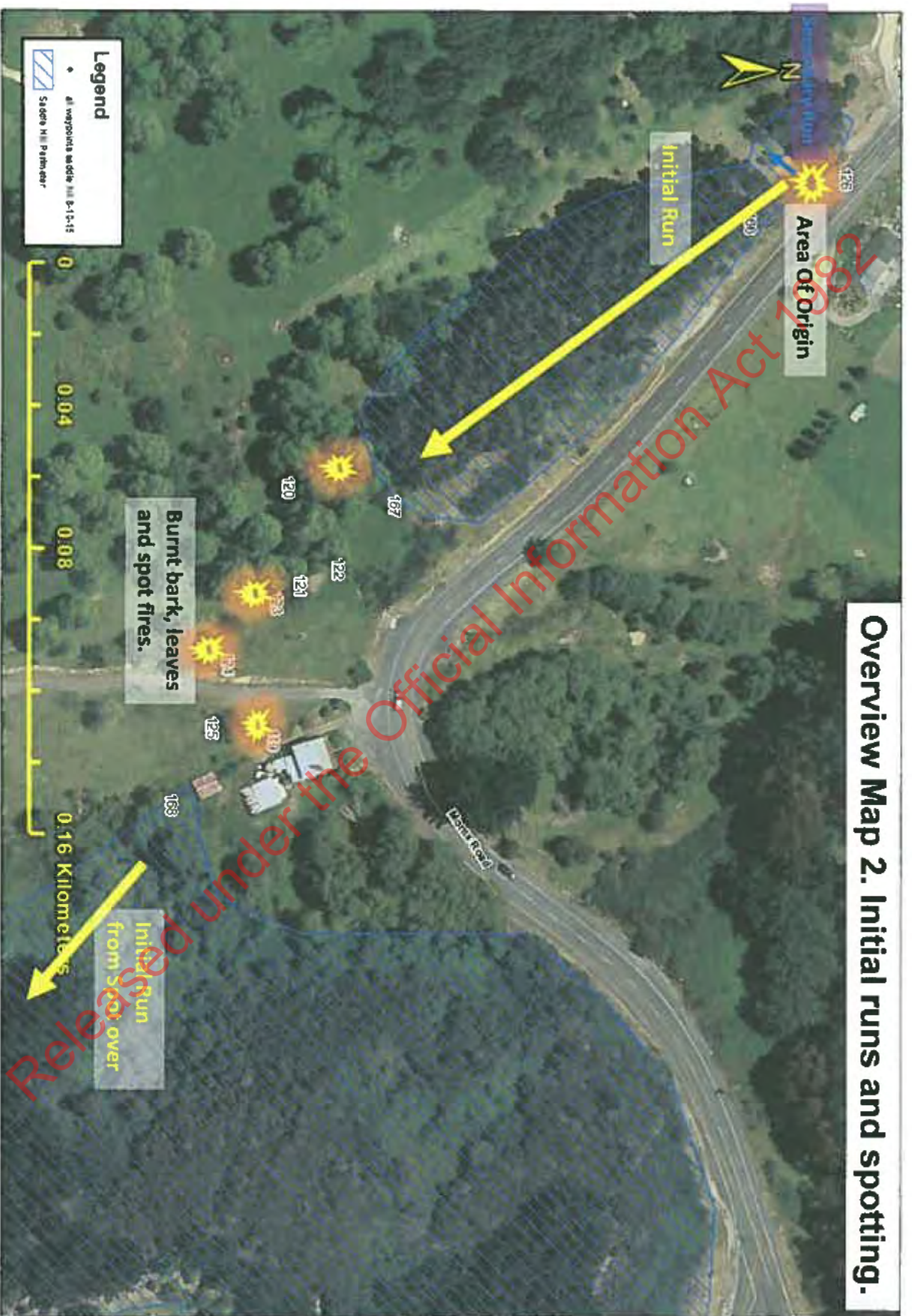
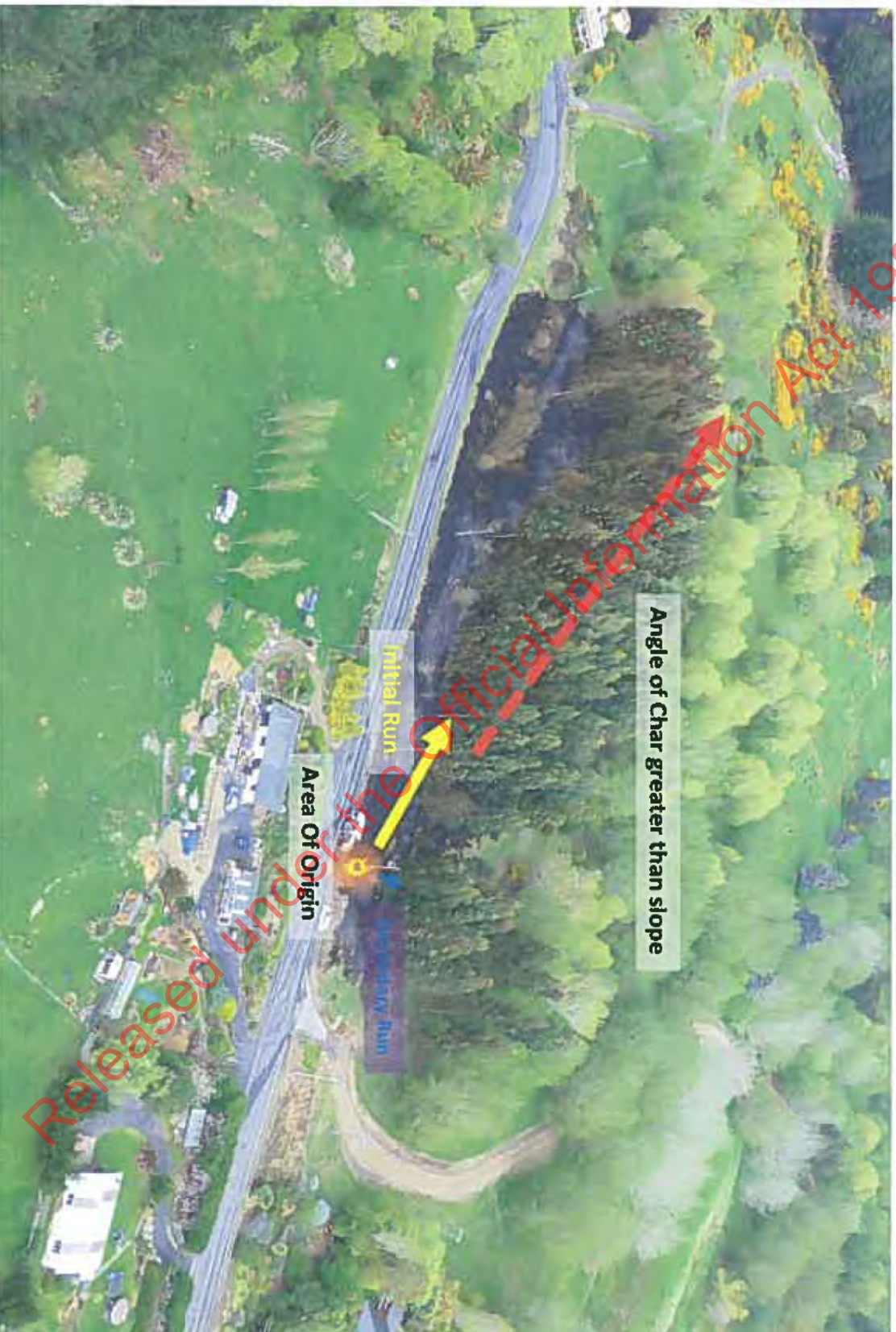


Photo 910-AOO, the initial fire run advancing to the SE, the angle of Char greater than the slope, a clear indication of the fires initial run direction.



Photos 917 – Approaching the scene, Power pole just prior to 231 Morris road showing branches blown up into the attached telephone line.



Released under the Official Information Act 1982

Photos 919 – Approaching the scene to the NW of the entrance to 231 Morris Road. AOO pole visible with Delta staff downloading trip data from the Recloser unit.



Photos 915 – Entrance to 231 Morris Road.



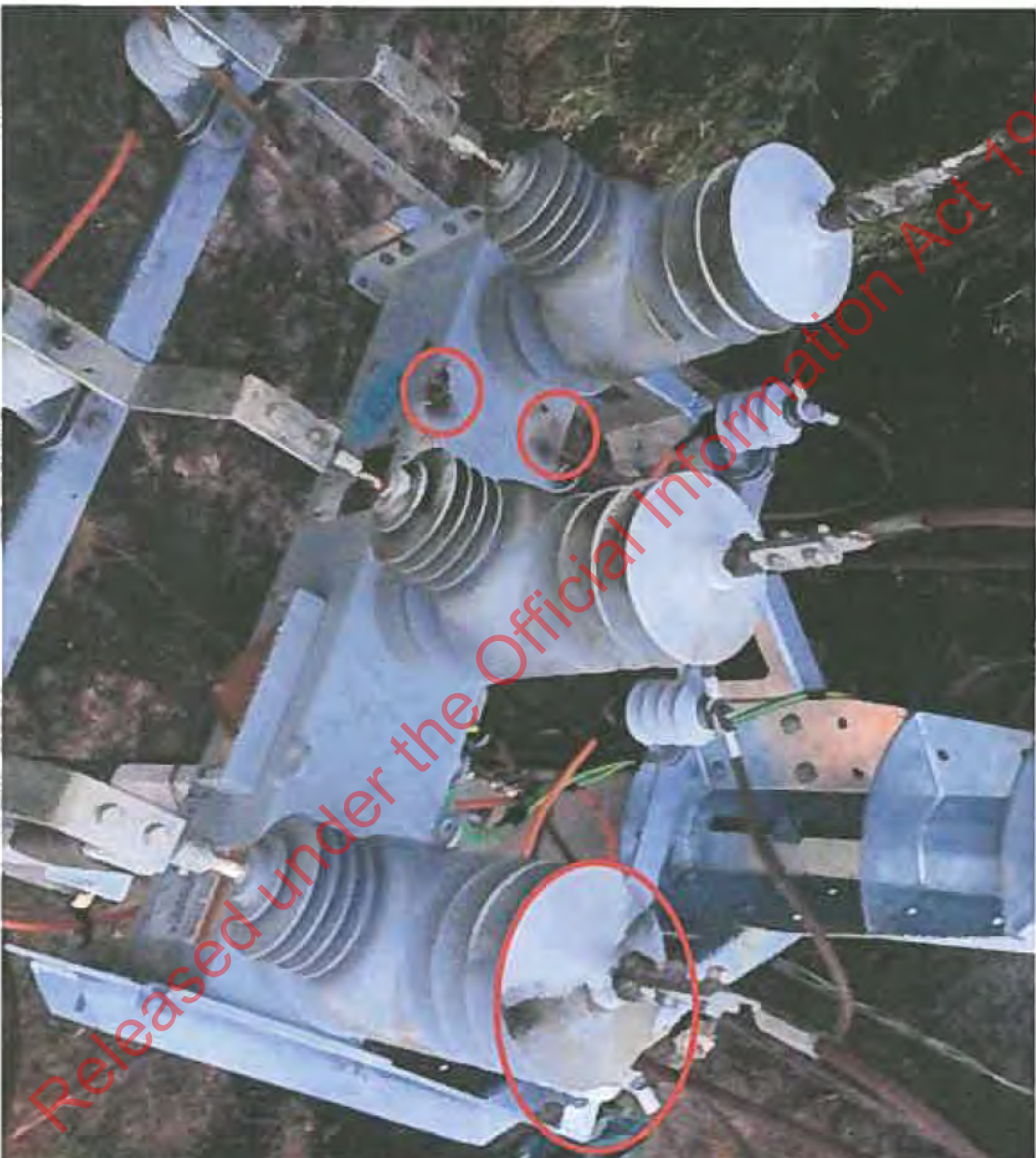
Photos 921 -A00 pole 821286.



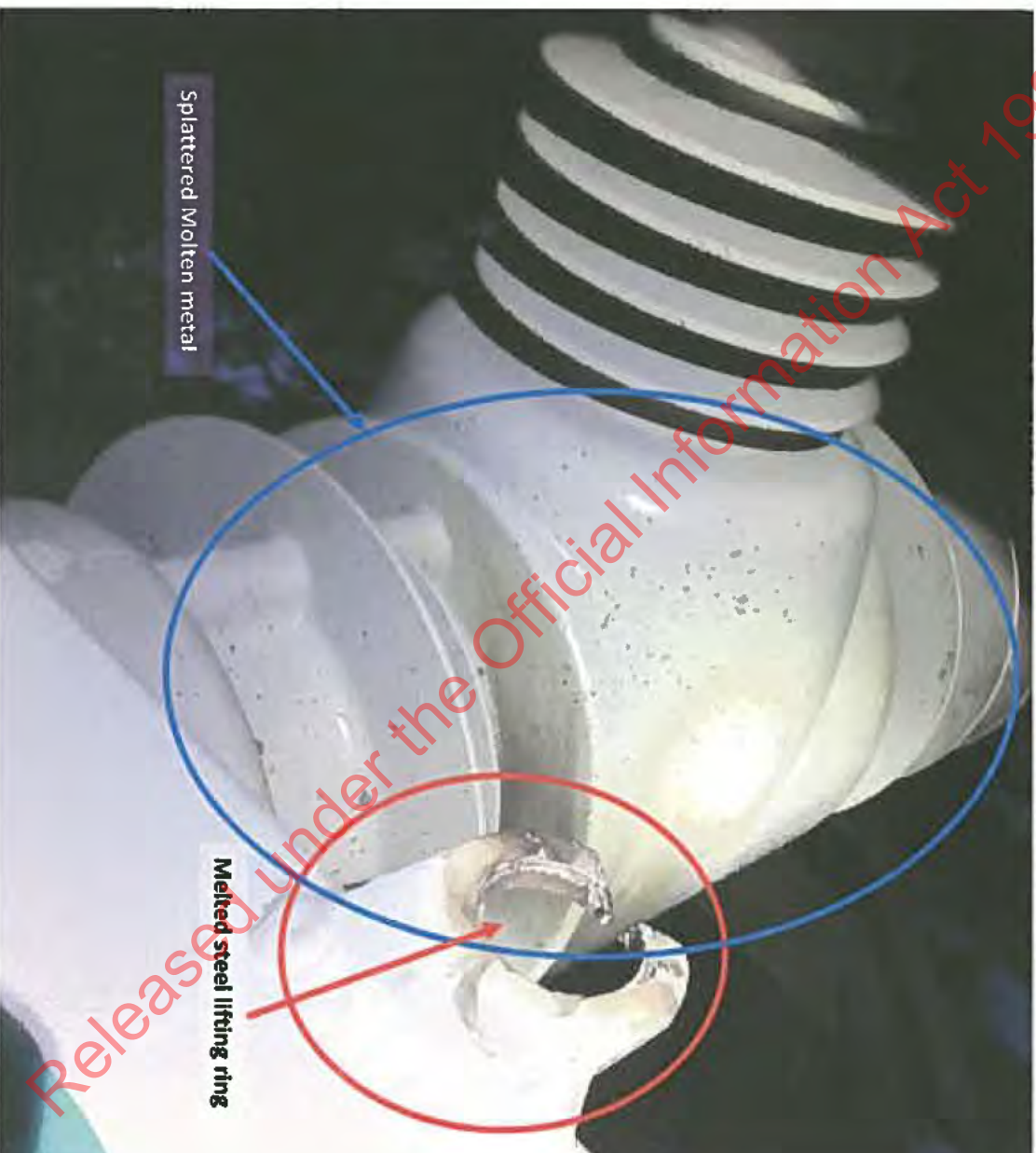
Photos 3 (4) Delta – Recloser unit on AOO pole 821286. Shows damage, carboning and charring to Recloser.



Photos 5 (2) Delta – Recloser unit on A00 pole 821286. Shows damage, carboning and charring to Recloser.



Photos 5 (4) Delta – Recloser unit on AOO pole 821286. Shows melted lifting ring and splatter of molten metal onto Recloser components.



Photos 1669 Delta – Angle of char greater than the slope, shows advancing fire approx. 50m to the SE of AOO.



Released under the Official Information Act 1982

Photos 923- Burnt gum bark Spot fire approx 14m out in front of the advancing fire at the end of the Gum plantation.



Photos 926– Spot fire approx 15m out in front of the advancing fire at the end of the Gum plantation.



Photos 923-- Burnt gum bark out in front of the advancing fire at the end of the Gum plantation.



Photos 931 – Burnt gum leaves approx. 30m out in front of the advancing fire at the end of the Gum plantation.



Photos 935— Spot fire 65m out in front of the advancing fire past the end of the Gum plantation.



Photos 934— Spot fires, burnt gum leaves and bark flagged out in front of the advancing fire past the end of the Gum plantation.



Photos 940-- Ember transfer evident by this burning spar on the hill behind 205 Morris road. (Chicks house).



Photos 946-- AOO showing low intensity and remaining fuel in the fence burnt off at the base. Flanking/Transition.



Photo 951 – Shows Pole 821286, the AOO, the initial fire run advancing to the SE, the angle of oxidation and identifies the 3 iron fencing standards used in the following slides.

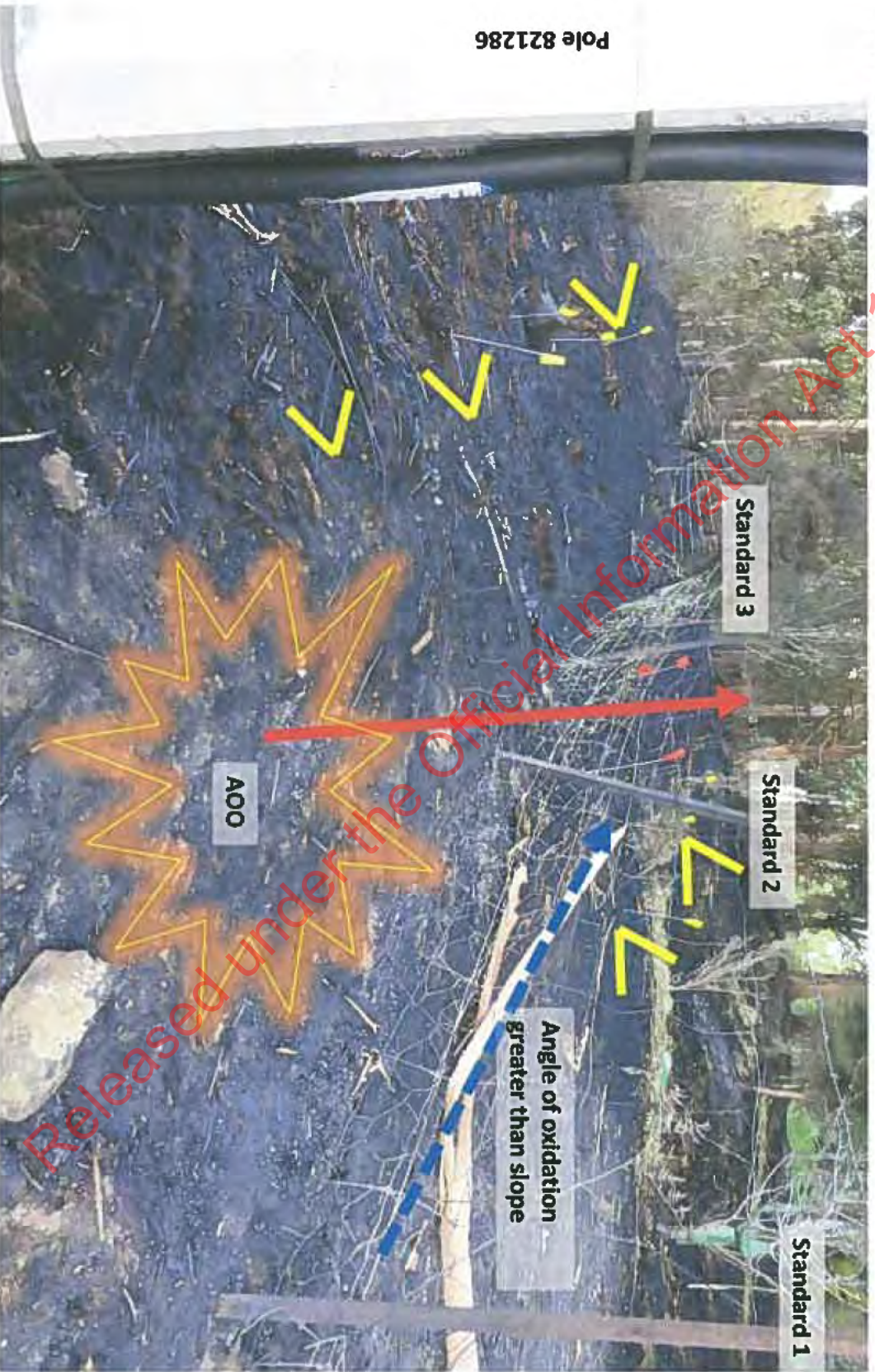
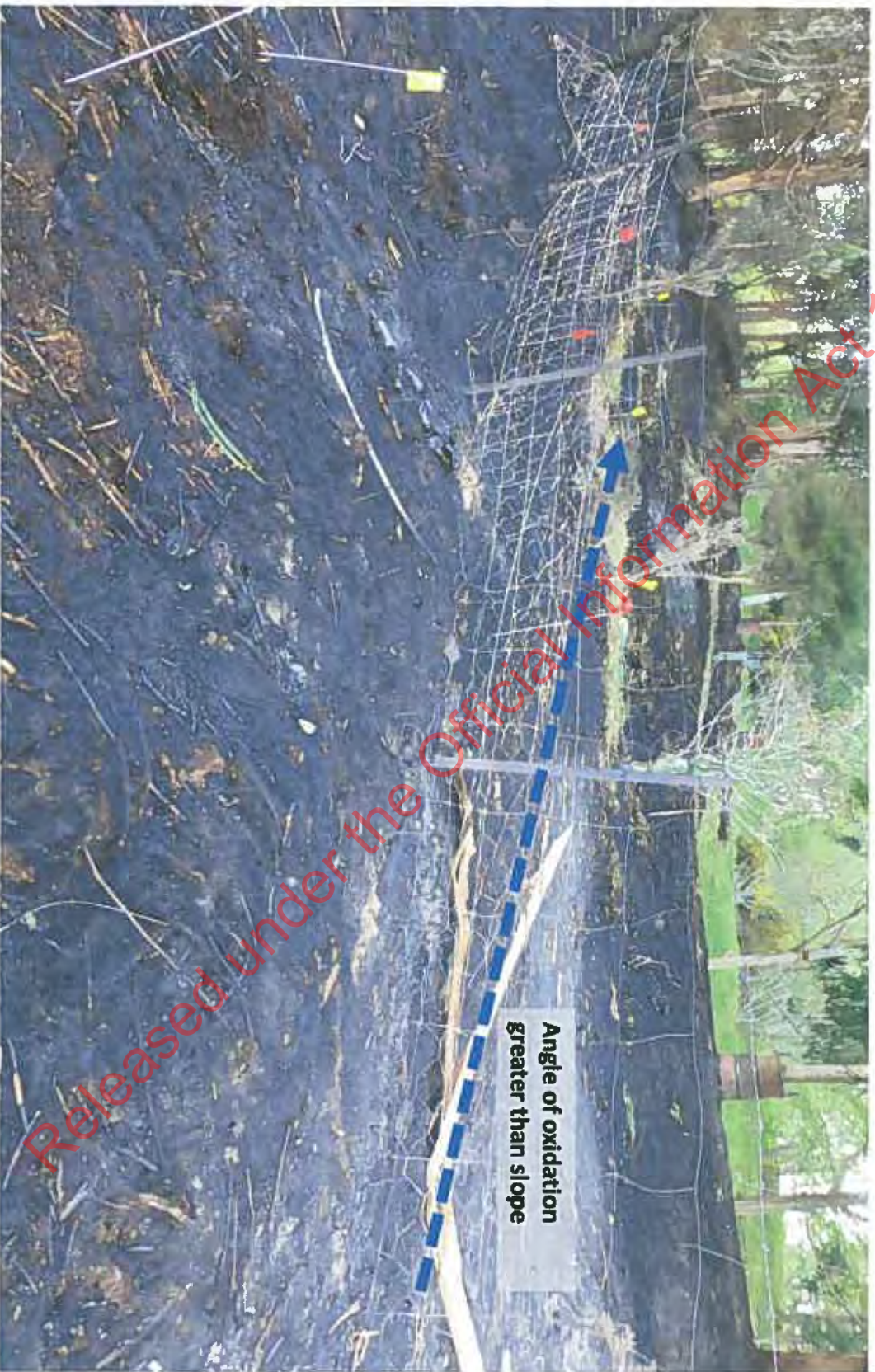
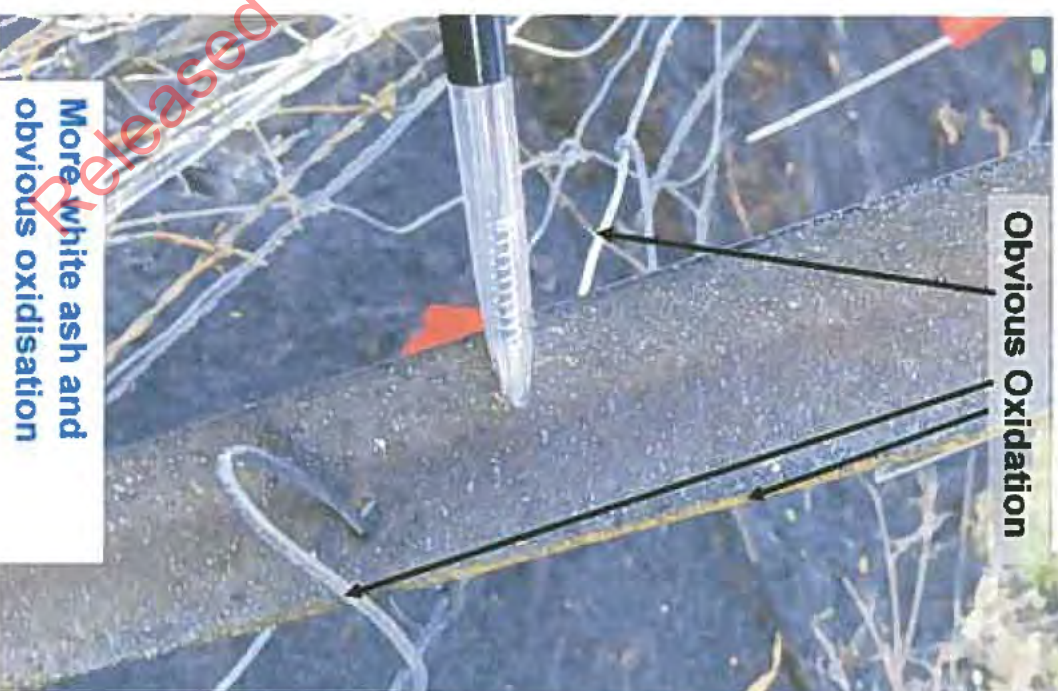


Photo 952—Shows the angle of oxidation greater than the slope showing a fire advancing to the SE from the AOO. (The higher the Intensity the greater the oxidation)

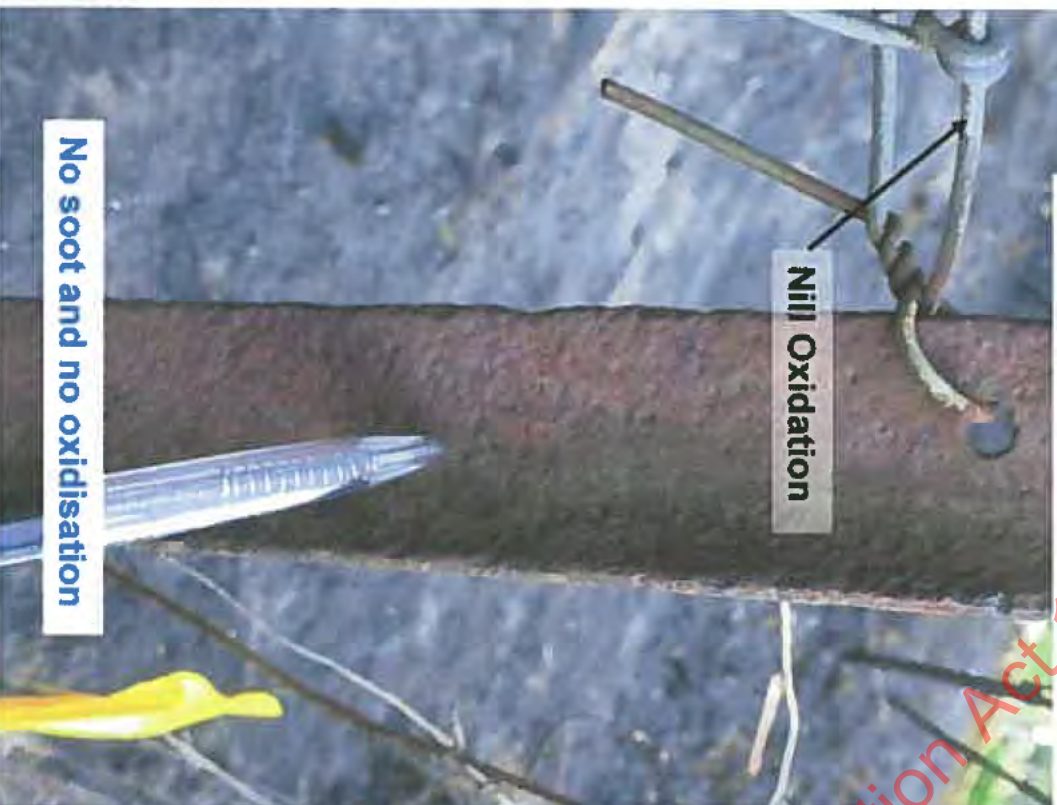


Photos 956, 958, 960 – Shows the sequential build up of white ash on the Iron fencing standards and corresponding oxidising on the wires. (Viewed from the advancing side NW)



Released under the Official Information Act 2002

Photos 957, 959, 961 – Shows the sequential build up of soot on the Iron fencing standards and corresponding oxidising on the wires. (Viewed from the protected side SE)



Photos 003 – Fire damaged trees either side of the front door on 47 Coalstage road. Evidence of significant ember attack.



Photos 006 – Freeze on trees on the drive near 47 Coalstage road, showing the wind direction from the SW after the wind change.



Photos 979 – Old trimming scars on the Gum tree closest to the Recloser (A00) pole showing historic trimming.



Photos 976 – Looking up the Recloser (A00) pole showing vegetation within 500mm of line.



Photos 945 – Further non maintained trim zones on ET2 above 205 Morris Rd.



Photos 997 – Shows the Heavy build up of bark in the gum trees. This contributes to spotting and also could have been blown onto the lines.



Released under the Official Information Act 1982

Photos 998 – Long strips of bark near the AOO from the gum trees. This contributes to spotting and also could have been blown onto the lines.



Photos 962 – View from [REDACTED] property where he watched the fire.



Photos 863 – 43 Coalstage Rd. Damage to property, garage destroyed.



Photos 1621 Delta- 43 Coalstage Rd. Damage to car in the garage.



Photos 1636 Delta - 43 Coalstage Rd. Spalling on concrete water tank and other plastic tanks melted down to water level.



Appendix 5 ICAD

New Zealand Fire Service Incident Report

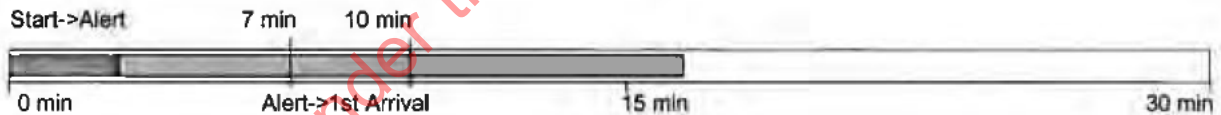
CADNumber F1932738 Start Date Time 07 October 2015 13:47:59

Incident Details

Type: VEG 1st Caller: XXXXXXXXXX
 Method: 111
 PFA:
 Result:
 Location: SADDLE HILL RD and MCMASTER RD,SADDLE HILL,DUNEDIN CITY NZTM: E 1395469
 N 4912981
 Common Name:
 Zone: 363163 Station: 3632 OUTRAM
 Incident Info: VEGETATION FIRE

Incident History

		Elapsed Time (hh:mm:ss)
Created:	13:47:59 07 Oct 2015	
Confirmed:	13:50:07 07 Oct 2015	00:02:08
Alerted:	13:50:46 07 Oct 2015	00:02:47
1st Response:	13:52:07 07 Oct 2015	00:04:08
1st Arrival:	14:04:49 07 Oct 2015	00:16:50
2nd Arrival:	14:06:01 07 Oct 2015	00:18:02
3rd Arrival:	14:34:18 07 Oct 2015	00:46:19
Stop:		
Closed:		



Responses

Alarm Level	Call Sign	Dispatched Day	Dispatched Time	Response Time	Arrival Time	Departed Day	Departed Time
1	OUTR321	07	13:50:46	13:54:03	14:04:49	07	18:09:47
1	STKI221	07	13:50:49	13:52:07	14:06:01	08	02:59:12
1	EASTOTAGO2	07	14:19:33	14:19:50	14:34:18	08	09:40:10
1	DUNE211	08	02:38:04	15:26:58	15:36:51	08	04:37:50
1	DUNE2118	07	16:36:08		16:36:34	08	17:27:37
1	MOSG312	07	16:47:01		16:47:10	07	17:16:46

1	WAKA9626	07	17:18:30		17:18:31	07	22:11:47
1	RFOOTAGO8	07	17:18:31		17:18:32	07	21:00:42
1	PORT271	07	17:18:33		17:18:34	07	18:03:07
1	MOSG311	07	17:18:35		17:18:36	08	11:55:37
1	LOOK237	08	05:53:46	05:54:00	17:18:39	08	07:31:15
1	SOUTTRNG6	07	16:37:52		17:40:24	07	19:00:12
1	ROSL241	07	22:48:18	22:48:36	22:50:28	07	23:54:33
1	WILL257	07	22:56:41	22:56:44	22:56:49	08	01:13:11
1	RFOOTAGO1	08	05:19:11	05:19:24	05:38:19	08	09:47:17
1	RURALDUNE1	08	07:36:39	07:36:44	08:04:39	08	18:25:46
1	FIOTAGO1	08	09:37:29	10:11:59	10:36:09	08	18:23:58
1	RFOOTAGO4	08	11:07:52	11:09:49	11:41:45	08	19:56:46
1	RAVE281	07	17:34:21			07	17:38:31
1	RFOOTAGO5	07	13:50:47			07	13:53:51

Cover Moves

Call Sign	Start Time	End Time
SOUT409	07 17:00:34	

Notifications

Date	Party Notified
13:53:11	RFO ACK
13:57:00	POWER ADVISED LINES ARE DE-ENERGISED BUT TO BE TREATED AS LIVE
15:23:54	VSO REGION 5 DUTY PAGER RE OUTRAM REQUEST
17:18:39	RFO ACK PAGE
17:18:39	AREA OTAGO - 3RD ALARM
17:18:39	RFO OTAGO COASTAL DUTY PAGER RE 4TH ALARM FIRE
17:18:39	MRF SOUTHERN PAGER RE 4TH ALARM
17:18:39	AREA OTAGO DUTY PAGER RE 4TH ALARM
17:18:39	CM SOUTHERN [REDACTED] VERBALLY - ACK
17:18:39	REGION 5 DUTY PAGER RE 4TH ALARM
17:18:39	MRF [REDACTED] ACK PAGER
17:18:39	POLICE AND ARE IN ATTENDANCE WE MAY NEED THEM FOR EVACUATIONS
17:18:39	AREA OTAGO DUTY [REDACTED] TO CONTACT [REDACTED] ASAP
17:59:36	AREA OTAGO DUTY PAGER
17:59:36	REGION 5 DUTY PAGER
17:59:36	OPS MANAGER SOUTHERN PAGER
17:59:36	MRF SOUTHERN PAGER
17:59:36	RFO OTAGO COASTAL DUTY PAGER RE INJURIES
17:59:36	NATIONAL OPS MANAGER UPDATED ON EVERYTHING
09:04:25	POWER (DELTA UTILITY) WILL RESPOND NOW
09:29:46	FI [REDACTED] TRANSFERRED TO DUNE2118
09:37:10	EAST OTAGO 2 - [REDACTED] (FI) RESPONDING TO THIS JOB AS [REDACTED] BUSY

The information contained in this report is subject to the provisions of the Official Information Act 1982 and the Privacy Act 1993. Neither the information nor the report should be released to any person outside the NZ Fire Service or the National Rural Fire Authority without prior approval.

Some message timestamps may differ to actual times in multi-agency incidents. Communication Centres can supply correct times if essential.

ANOTHER EVENT
 16:00:41 MOSGIEL STATION UPDATE @1600 HRS - DUNE2118, RFOOTAGO4, FIOTAGO1 AND RURALDUNE1 ALL STILL IN ATTENDANCE - HAVE JUST CONDUCTED A HELO SURVEY OF AREA AND CONTACTING COMMS SOON WITH UPDATE
 16:54:05 DUNEDIN CC - ROAD AROUND SADDLE HILL CAN NOW BE REOPENED - COUNCIL ASKED TO COLLECT SIGNS AND ROAD CONES

Message Log

Time	Message
13:50:07	INC INFO: POWER TRANSFORMER ON FIRE OPPISITE 95
13:50:09	** LOI search completed at 07/10/15 13:50:09
13:50:36	** Recommended unit RFOOTAGO5 for requirement RFO (>10.0 km)
13:50:36	** Recommended unit OUTR321 for requirement PUMP (>10.8 km)
13:50:36	** Recommended unit STKI221 for requirement PUMP (>12.0 km)
13:51:07	CALLER INDICATED A HOUSE WAS UNDER THREAT
13:51:41	AL: PAGING ACK RECEIVED FROM STATION 3632 at 07/10/15 13:51:41
13:52:08	Unit STKI221 [K1 : PROCEEDING TO INCIDENT]
13:53:52	Unit RFOOTAGO5 [K6 : ON TELEPAGER]
13:54:04	Unit OUTR321 [K1 : PROCEEDING TO INCIDENT]
13:54:19	Unit OUTR321 [KC : UNIT CALLING]
13:54:52	Duplicate Event: MORRIS RD DUNEDIN CITYCross Street 1COALSTAGE RDCross Street
13:54:52	2CHAIN HILLS RD, Type = VEG VEGETATION FIRE, Subtype = default, Caller Name =
13:54:52	VODAFONE NEW ZEALAND LTD, Caller Ph Number = [REDACTED] Caller Address = [REDACTED]
13:54:52	HALSEY STREET, DUNEDIN CENTRAL, DUNEDIN CITY, Call Source = 111Alarm Level1Inc
13:54:52	InfoVEGETATION FIRE, Event Source = Fire 111
13:54:52	INC INFO: VEGETATION FIRE
13:54:52	** LOI search completed at 07/10/15 13:53:38
13:54:52	End of Duplicate Event data
13:54:53	** Cross Referenced to Event # F1932749 at: 07/10/15 13:54:53
13:54:53	**
14:01:02	XXXX
14:01:03	X
14:01:18	POWER AUTHORITY ADVISED THEY HAVE DEENERGISED THE LINES
14:01:19	XXXX
14:04:50	Unit OUTR321 [K2 : IN ATTENDANCE AT INCIDENT]
14:06:01	Unit STKI221 [K2 : IN ATTENDANCE AT INCIDENT]
14:19:50	Unit EASTOTAGO2 [K1 : PROCEEDING TO INCIDENT]
14:19:51	Unit EASTOTAGO2 [K1 : PROCEEDING TO INCIDENT]
14:19:55	Unit EASTOTAGO2 [KC : UNIT CALLING]
14:19:55	Unit EASTOTAGO2 [KC : UNIT CALLING]
14:34:19	Unit EASTOTAGO2 [K2 : IN ATTENDANCE AT INCIDENT]
14:34:19	Unit EASTOTAGO2 [K2 : IN ATTENDANCE AT INCIDENT]
14:36:23	Unit EASTOTAGO2 [KC : UNIT CALLING]
14:36:23	Unit EASTOTAGO2 [KC : UNIT CALLING]
14:37:25	Unit EASTOTAGO2 [K45 : COMMAND RESPONSIBILITY CHANGED TO - NAME] LOCATED

CHAIN
14:37:25 HILL ROAD NO NAME AT THIS STAGE
14:41:09 Unit EASTOTAGO2 [KP : PRIORITY MESSAGE]
14:41:10 Unit EASTOTAGO2 [KP : PRIORITY MESSAGE]
14:42:10 Unit EASTOTAGO2 [SITREP :] EASTOTAGO 1 TIREI AIR FEILD TO GO IN HELI FOR
14:42:10 OVERVIEW
14:42:18 Unit EASTOTAGO2 [KP : PRIORITY MESSAGE]
14:42:19 Unit EASTOTAGO2 [KP : PRIORITY MESSAGE]
14:42:39 Unit EASTOTAGO2 [SITREP :] 11 MC MASTERS RD
14:42:59 Unit EASTOTAGO2 [KP : PRIORITY MESSAGE]
14:42:59 Unit EASTOTAGO2 [KP : PRIORITY MESSAGE]
14:45:02 RAVE281 WE ARE AT 11 COALSTAGE RD K99 HOUSE FIRE DO YOU HAVE ANY AVAILBLE
PUMPS
14:45:27 SOUT409 AVAIL FOTR TURNOUT
14:45:27 Unit EASTOTAGO2 [KC : UNIT CALLING]
14:45:28 Unit EASTOTAGO2 [KC : UNIT CALLING]
14:46:08 COMMAND POINT MORRIS HILL/MAC MASTER RD CORNER OF CARPARK
14:58:21 Unit EASTOTAGO2 [KC : UNIT CALLING]
14:58:21 Unit EASTOTAGO2 [KC : UNIT CALLING]
15:01:38 Unit EASTOTAGO2 [KC : UNIT CALLING]
15:01:39 Unit EASTOTAGO2 [KC : UNIT CALLING]
15:02:34 ARE ALL HOUSE FIRES COVERED? (AFFIRM) DOC SETTING UP HELO COMMAND POINT,
WIL
15:02:34 LHAVE COMS SHORTLY
15:20:32 Unit OTR321 [KC : UNIT CALLING]
15:21:55 Unit OTR321 [SITREP :] 8XBA CYLIDERS AND DRINKING WATER
15:26:58 Unit DUNE211 [K1 : PROCEEDING TO INCIDENT]
15:32:23 [REDACTED] ADVISES BREAK IN WEATHER 5 HELICOPTERS GOING UP TO DO FIRE FIGHTING
15:36:52 Unit DUNE211 [K2 : IN ATTENDANCE AT INCIDENT]
15:47:07 Unit DUNE211 [K4 : ON RT INSIDE NORMAL TURNOUT AREA]
16:00:39 Unit EASTOTAGO2 [KP : PRIORITY MESSAGE]
16:01:13 Unit EASTOTAGO2 [KP : PRIORITY MESSAGE] WE REQUIRE AN AMB TO SADDLE HILL
16:01:13 COMMAND, CNR MORRIS AND QUARRY ROAD, FOR 2XFF, [REDACTED]
16:25:35 Duplicate Event: QUARRY RD DUNEDIN CITYCross Street 1GORDON RDCross Street
16:25:35 2WOODLAND AV, Type = MIN MINOR, Subtype = default, Caller Name = [REDACTED]
16:25:35 Caller Ph Number = [REDACTED] Caller Address = [REDACTED] ELWYN CRESCENT, GREEN ISLAND,
16:25:35 DUNEDIN CITY, Call Source = 111Alarm Level1Inc InfoFIRE ON QUARRY RD, MOSGIEL,
16:25:35 Event Source = Fire 111
16:25:35 CALLER IS ON ELWYN CR
16:25:35 INC INFO: FIRE ON QUARRY RD, MOSGIEL
16:25:35 ** LOI search completed at 07/10/15 15:09:39
16:25:35 CALLER IS ADAMENT THIS IS A DIFF FIRE FROM THE ONE ON MORRIS
16:25:35 CALLER DOES NOT KNOW WHERE THE FIRE IS
16:25:35 SHE IS LOOKING THROUGH BINOCULARS
16:25:35 90 DEGREES ON THE OTHER SIDE OF SADDLE HILL THERE IS FRESH SMOKE
16:25:35 [REDACTED]

16:25:36 End of Duplicate Event data
 16:25:36 ** Cross Referenced to Event # F1932909 at: 07/10/15 16:25:36
 16:25:36 **
 16:36:34 Unit DUNE2118 [K2 : IN ATTENDANCE AT INCIDENT]
 16:40:04 Unit DUNE2118 [KC : UNIT CALLING]
 16:40:58 Unit DUNE2118 [KC : UNIT CALLING]
 16:47:10 Unit MOSG312 [K2 : IN ATTENDANCE AT INCIDENT]
 16:52:14 Unit SOUTTRNG6 [K3 : ON RT OUTSIDE NORMAL TURNOUT AREA]
 16:55:01 Unit DUNE2118 [KC : UNIT CALLING]
 16:58:40 Unit DUNE2118 [KC : UNIT CALLING]
 16:59:16 Unit DUNE2118 [SITREP :] RURAL FIRE DO NOT REQUIRE OLD BRIGHTON RD TO BE EVAC
 17:00:35 COVERING UNIT SOUT409 DISPATCHED TO STATION DUNEDIN AT
 17:00:35 D0730062
 17:03:55 Unit DUNE2118 [KC : UNIT CALLING]
 17:04:50 Unit STKI221 [K3 : ON RT OUTSIDE NORMAL TURNOUT AREA]
 17:14:20 Unit DUNE2118 [KC : UNIT CALLING]
 17:16:15 Unit DUNE2118 [KC : UNIT CALLING]
 17:16:47 Unit MOSG312 [K4 : ON RT INSIDE NORMAL TURNOUT AREA]
 17:18:39 Duplicate Event: MORRIS RD DUNEDIN CITYCross Street 1COALSTAGE RDCross Street
 17:18:39 2QUARRY RD, Type = VEG 1F VEGETATION FIRE ASSIST FIRE/AMBULANCE/TRAFFIC,
 Subtype
 17:18:39 = default 2, Caller Name = CALLPLUS LIMITED, Caller Ph Number = [REDACTED]
 17:18:39 Caller Address = MXS/DNS5/MXQ1 ARE AT FIRE COMMAND POINT, Call Source = 111Alarm
 17:18:39 Level3Inc InfoSMOKE, Event Source = Fire 111
 17:18:39 INC INFO: SMOKE
 17:18:39 ** LOI search completed at 07/10/15 13:55:03
 17:18:39 INC INFO: VEGETATION FIRE
 17:18:39 Unit MOSG311 [KP : PRIORITY MESSAGE]
 17:18:39 Unit MOSG311 [SITREP :] SIGNIFICANT BURN THREATENING PROPERTY TRANSMIT
 THRID
 17:18:39 ALARM NOTIFY RURAL
 17:18:39 Unit MOSG311 [KP : PRIORITY MESSAGE]
 17:18:39 NOT RFO ACK PAGE
 17:18:39 Unit MOSG311 [SITREP :] FIRE TRANFERED INTO TREES THREATENING PROPERTY
 17:18:39 Unit MOSG311 [K66 : NON PROPERTY FIRE]
 17:18:39 ** Alarm level updated to 3
 17:18:39 ** Recommended unit RAVE281 for requirement PUMP (>15.0 km)
 17:18:39 ** Recommended unit PORT271 for requirement PUMP (>21.8 km)
 17:18:39 ** No recommendation for requirement RFO
 17:18:39 AL: PAGING ACK RECEIVED FROM STATION 3628 at 07/10/15 14:03:24
 17:18:39 Unit MOSG311 [KP : PRIORITY MESSAGE]
 17:18:39 Unit MOSG311 [K11P : POLICE REQUIRED]
 17:18:39 ..
 17:18:39 FIR2POL - POLICE REQUIRED - 3RD ALARM TREES ON FIRE TRAFFIC CONTROL THANKS
 17:18:39 AL: PAGING ACK RECEIVED FROM STATION 3627 at 07/10/15 14:04:13
 17:18:39 Unit MOSG311 [SITREP :] ALL OTHER APPLLIANCES HEAD EAST TO ASSES TREES ON

FIRE
17:18:39 NOT AREA OTAGO - 3RD ALARM
17:18:39 Unit MOSG311 [KP : PRIORITY MESSAGE]
17:18:39 Unit MOSG311 [SITREP :] RURAL FIRE FORTH ALARM WE CAN NOT ASSESS TRESS
17:18:39 Unit LOOK237 [K1 : PROCEEDING TO INCIDENT]
17:18:39 NOT RFO OTAGO COASTAL DUTY PAGER RE 4TH ALARM FIRE
17:18:39 Unit PORT271 [K1 : PROCEEDING TO INCIDENT]
17:18:39 INC INFO: FIRE ON HILLSIDE
17:18:39 INC INFO: VEGETATION FIRE
17:18:39 NOT MRF SOUTHERN PAGER RE 4TH ALARM
17:18:39 NOT AREA OTAGO DUTY PAGER RE 4TH ALARM
17:18:39 Unit RAVE281 [K1 : PROCEEDING TO INCIDENT]
17:18:39 NOT CM SOUTHERN [REDACTED] VERBALLY - ACK
17:18:39 POLICE DCC ADVISES DOWNER ADVISED RE ROAD CLOSURE.
17:18:39 MXQ6 10/2
17:18:39 NOT REGION 5 DUTY PAGER RE 4TH ALARM
17:18:39 ** Event Type changed from FIR2POL to 1F(2) at: 07/10/15 14:10:52
17:18:39 **
17:18:39 //
17:18:39 Unit MOSG311 [KC : UNIT CALLING]
17:18:39 Unit MOSG311 [SITREP :] FIRE BEYOND CONTROL HEADING EAST 20 NOT WINDS NORTH
17:18:39 EAST HEADING TOWARDS COAST
17:18:39 RANG
17:18:39 MORRIS/MOSGIEL END KINMONT CRES NEAREST INTERSECTION
17:18:39 DEALING
17:18:39 HOUSES TO BE CLEARED ALSO
17:18:39 //
17:18:39 Unit MOSG311 [KP : PRIORITY MESSAGE]
17:18:39 Unit MOSG311 [SITREP :] HOUSE FIRE 43 STAGE COAST RD 1 UNIT IN ATTENDANCE
17:18:39 NOT MRF [REDACTED] ACK PAGER
17:18:39 MORRIS/CHAINHILLS ALSO TO CLOSE
17:18:39 //
17:18:39 Unit LOOK237 [SITREP :] CAN WE GET ADDRESS OF HOUSE FIRE
17:18:39 HOUSES TO BE EVACUATED
17:18:39 //
17:18:39 Duplicate Event: QUARRY RD DUNEDIN CITYCross Street 1GORDON RDCross Street
17:18:39 2WOODLAND AV, Type = VEG VEGETATION FIRE, Subtype = default, Caller Ph Number =
17:18:39 [REDACTED] Call Source = 111Alarm Level1Inc InfoFIRE IN TREES, Event Source =
17:18:39 Fire 111
17:18:39 INC INFO: FIRE IN TREES
17:18:39 ** LOI search completed at 07/10/15 14:00:32
17:18:39 500M, HEADING UP THE HILL
17:18:39 Duplicate Event: COALSTAGE RD DUNEDIN CITYCross Street 1SADDLE HILL RDCross
17:18:39 Street 2MORRIS RD, Type = VEG VEGETATION FIRE, Subtype = default, Caller Name =
17:18:39 VODAFONE NEW ZEALAND LTD, Caller Ph Number = [REDACTED] Caller Address = [REDACTED]
17:18:39 ROWAN PLACE, MOSGIEL, DUNEDIN CITY, Call Source = 111Alarm Level1Inc InfoFIRE ON

17:18:39 SADDLE HILLV, Event Source = Fire 111
17:18:39 INC INFO: FIRE ON SADDLE HILLV
17:18:39 End of Duplicate Event data
17:18:39 ** LOI search completed at 07/10/15 14:06:16
17:18:39 THIS LOOKS LIKE THE MOSGIEL JOB
17:18:39 ** Cross Referenced to Event # F1932778 at: 07/10/15 14:09:25
17:18:39 **
17:18:39 Duplicate Event: GORDON RD DUNEDIN CITYCross Street 1OUTRAM-MOSGIEL RDCross
17:18:39 Street 2EDEN ST, Type = VEG VEGETATION FIRE, Subtype = default, Call Source =
17:18:39 111Alarm Level1Inc InfoVEG FIRE IN VICINITY
17:18:39 INC INFO: VEG FIRE IN VICINITY
17:18:39 End of Duplicate Event data
17:18:39 ** LOI search completed at 07/10/15 14:00:41
17:18:39 SAME JOB AS MOSGIEL-
17:18:39 BELIEVE THIS IS THE SAME JOB THAT MOSG311 IS HEADING TO
17:18:39 CALLER WAS ON GORDON RD, LOOKING TOWARDS RAILWAY
17:18:39 UNABLE TO GIVE LOCATION
17:18:39 BUT HEARD FIRE TRUCK
17:18:39 ** Cross Referenced to Event # F1932766 at: 07/10/15 14:09:29
17:18:39 **
17:18:39 End of Duplicate Event data
17:18:39 ** Cross Referenced to Event # F1932765 at: 07/10/15 14:19:14
17:18:39 **
17:18:39 Unit MOSG311 [KC : UNIT CALLING]
17:18:39 Unit MOSG311 [KC : UNIT CALLING]
17:18:39 Unit MOSG311 [KC : UNIT CALLING]
17:18:39 Unit PORT271 [KC : UNIT CALLING]
17:18:39 Unit PORT271 [SITREP :] TO RESPOND TO THE HOUSE FIRE 41 SADDLE HILL RD
17:18:39 ++
17:18:39 SO [REDACTED] LAND LOCKED, CANT SEE TO THE EAST, BIG HILL, LOTS OF FIRE IN THE
17:18:39 FOREST, NO VISUAL, PROTECTING FIRES BETWEEN TWO FIRE FRONTS
17:18:39 ++
17:18:39 COUJNCIL POWER OFF IN MORRIS ROAD
17:18:39 ****
17:18:39 Unit RAVE281 [KP : PRIORITY MESSAGE]
17:18:39 AIR DUNEDIN ARE RESPONDING THEIR 5000L TANKER TO MORRIS
17:18:39 COUNCIL TO COVER OFF INTERSECTIONS MORRIS/CHAINHILLS
17:18:39 Unit RAVE281 [SITREP :] IN ATTENDANCE WITH WILLBOANK TOO DANGEROUS TO
CARRY ON
17:18:39 WILL ASSIST WITH EVAC
17:18:39 Unit RAVE281 [K66 : NON PROPERTY FIRE]
17:18:39 Unit PORT271 [K2 : IN ATTENDANCE AT INCIDENT]
17:18:39 AND
17:18:39 MORRIS/COALSTAGE ROADS
17:18:39 //
17:18:39 Unit RAVE281 [KP : PRIORITY MESSAGE]

17:18:39 Unit RAVE281 [SITREP :] MEMBER OF PUBLIC MORRIS RD STUCK IN HOUSE
17:18:39 ATTEMPTING RESCUE
17:18:39 #####
17:18:39 NOT POLICE AND ARE IN ATTENDANCE WE MAY NEED THEM FOR EVACUATIONS
17:18:39 Unit RAVE281 [SITREP :] MOTHER OF 3 CHILDREN ARRIVED AND SAID 3 CHILDREN
17:18:39 TRAPPED IN HOUSE (DO YOU NEED POLICE TO ASSIT) NEGATIVE
17:18:39 FIRE UNIT MCMASTER RD... FOR POLICE
17:18:39 DNY6 EVACUATING HOUSES ON COALSTAGE RD
17:18:39 MORRIS/BRAESIDE RD CLOSED
17:18:39 Unit RAVE281 [KP : PRIORITY MESSAGE]
17:18:39 5M FROM HOUSES
17:18:39 RAVE281 ATTACHED
17:18:39 End of Duplicate Event data
17:18:39 ** Cross Referenced to Event # F1932792 at: 07/10/15 14:38:17
17:18:39 **
17:18:39 11 COALSTAGE RD ON FIRE
17:18:39 Unit RAVE281 [SITREP :] HAVE CLEARED 91 MORRIS ROAD HEADING BACK TO ASSIST
17:18:39 OTHER APPLIANCES. STOPPED BY POLICE COALSTAGE RD REPORTED ROOF ON FIRE
17:18:39 Unit PORT271 [SITREP :] PORT CHALMER WE ARE FREE TO RESPOND TO 11 MAC
MASTERS
17:18:39 HOSE FIRE
17:18:39 DUNE211 RETURNING FROM DUNBACK
17:18:39 Unit LOOK237 [KP : PRIORITY MESSAGE]
17:18:39 Unit WILL257 [KC : UNIT CALLING]
17:18:39 Unit WILL257 [KP : PRIORITY MESSAGE]
17:18:39 Unit WILL257 [KC : UNIT CALLING]
17:18:39 FIRE COMMAND POINT MORRIS/COALSTAGE(CARPARK)
17:18:39 Unit LOOK237 [K2 : IN ATTENDANCE AT INCIDENT]
17:18:39 Unit WILL257 [K88 : PROPERTY SMALL]
17:18:39 Unit PORT271 [KC : UNIT CALLING]
17:18:39 DNY6 EVAC 46 SADDLEHILL RD
17:18:39 Unit PORT271 [KC : UNIT CALLING]
17:18:39 Unit WILL257 [KC : UNIT CALLING]
17:18:39 Unit PORT271 [KP : PRIORITY MESSAGE]
17:18:39 PORT271 258 SADDLE HILL RD K99 HOUSE FIRE
17:18:39 #####
17:18:39 COMMAND POINT MOVING TO QUARRY/MORRIS "PALMERS QUARRY"
17:18:39 MXCP SADDLEHILL/COALSTAGE
17:18:39 INC INFO: SMOKE IN AREA
17:18:39 Unit WAKA9626 [K1 : PROCEEDING TO INCIDENT]
17:18:39 OTAGO HELO REQUEST EVAC OF OLD NEW BRIGHTON RD
17:18:39 DNF1 WILL DRIVE ALONG OLD NEW BRIGHTON AND MAKE AN ASSESSMENT
17:18:39 Unit WILL257 [KC : UNIT CALLING]
17:18:39 Unit WILL257 [K47 : STOP MESSAGE: MESSAGE UNCHANGED FROM INFORMATIVE]
17:18:39 Unit WAKA9626 [KC : UNIT CALLING]
17:18:39 Unit WAKA9626 [KC : UNIT CALLING]

17:18:39 Unit WAKA9626 [KC : UNIT CALLING]
17:18:39 #####
17:18:39 SAAA09 HAS FOUND 76 ADDRESSES AND PHONE NOS FOR OLD BRIGHTON ROAD
17:18:39 IN TESA
17:18:39 STANDING BY
17:18:39 DCC CALLING COUNCIL RE CLOSING OLD NEW BRIGHTON RD /WALTON DOWN TO OLD
NEW
17:18:39 BRIGHTON/JEFFCOATES
17:18:39 DNQ5 AND DNQ5A WILL BE DOOR KNOCKING FOR EVACUATION
17:18:39 Unit LOOK237 [KP : PRIORITY MESSAGE]
17:18:39 Unit WAKA9626 [K2 : IN ATTENDANCE AT INCIDENT]
17:18:39 Unit WAKA9626 [KC : UNIT CALLING]
17:18:39 RECEIVED A TXT FROM FRIEND RE FIRE ON MOSGIEL WAY
17:18:39 Unit WILL257 [KC : UNIT CALLING]
17:18:39 Unit LOOK237 [STOP : MESSAGE]
17:18:39 Unit PORT271 [KC : UNIT CALLING]
17:18:39 Unit PORT271 [KC : UNIT CALLING]
17:18:39 Unit PORT271 [KC : UNIT CALLING]
17:18:39 Unit PORT271 [KP : PRIORITY MESSAGE]
17:18:39 Unit PORT271 [KP : PRIORITY MESSAGE]
17:18:39 DNY3## RESIDENCE [REDACTED] OLD BRIGHTON RD ASK TO LEAVE ADDRESS
17:18:39 #####
17:18:39 DNX1C BLOCKING SH 1 SOUTHBOUND
17:18:39 DNQ5/A BLOCKING SH 1 NORTHBOUND LANE
17:18:39 Unit LOOK237 [KC : UNIT CALLING]
17:18:39 Unit LOOK237 [SITREP :] SSO [REDACTED] MECH TO FIREGROUND, PALMERS
CONCRETE
17:18:39 Unit RFOOTAG08 [K1 : PROCEEDING TO INCIDENT]
17:18:39 XXXXXXXXXXXXXXX
17:18:39 MECHANIC HAS 2 ON THE WAY NOW TO COMMAND POINT
17:18:39 XXX
17:18:39 NOT AREA OTAGO DUTY [REDACTED] TO CONTACT [REDACTED] ASAP
17:18:39 ** Event Location changed from "MORRIS RD,CHAIN HILLS,DUNEDIN CITY" to "MORRIS
RD,KINMONT PARK,DUNEDIN CITY" at: 07/10/15 16:04.07
17:18:39 **
17:18:39 ** LOI search completed at 07/10/15 16:04:12
17:18:39 MEDIA HAVE BEEN ADVISED RE ROAD CLOSURES
17:18:39 #####
17:18:39 1615HRS MXS CONFIRMS SH 1 IS RE OPENING
17:18:39 POLICE UNITS ADVISED
17:18:39 DCC WILL PASS INTO TO THE MEDIA
17:18:39 140 OLD BRIGHTON PROPERTY IS THE CLOSEST PROPERTY TO THE FIRE
17:18:39 WEST OF PROPERTY
17:18:39 #####
17:18:39 1625HRSRURAL FIRRE CHIEF IS IN A HELO MAKING AN ASSESSMENT
17:18:39 (1625HRS)

17:18:39 #####
17:18:39 WRONG UNIT ASSIGNED SHH13 NOT IN DND.
17:18:39 Unit RFOOTAGO8 [K2 : IN ATTENDANCE AT INCIDENT]
17:18:39 Unit WILL257 [KC : UNIT CALLING]
17:18:39 Unit WILL257 [STOP : MESSAGE]
17:18:39 Unit WILL257 [K22-1 : UNIT AVAILABLE FOR A FURTHER EVENT]
17:18:39 Unit WILL257 [K4 : ON RT INSIDE NORMAL TURNOUT AREA]
17:18:39 Unit MOSG311 [KC : UNIT CALLING]
17:18:39 OCCUPANTS ABLE TO RETURN TO THEIR HOMES @ 17.04
17:18:39 DCC COPIES @ 17:04
17:18:39 ** Event held for 60 minutes and unit LOOK237
17:18:52 End of Duplicate Event data
17:18:53 ** Cross Referenced to Event # F1932751 at: 07/10/15 17:18:53
17:18:53 **
17:30:24 Unit DUNE2118 [KC : UNIT CALLING]
17:38:32 Unit RAVE281 [K3 : ON RT OUTSIDE NORMAL TURNOUT AREA]
17:38:52 Unit SOUTTRNG6 [SITREP :] SOUTTRNG6 IS AT 43 COALSTAGE RD
17:40:25 Unit SOUTTRNG6 [K2 : IN ATTENDANCE AT INCIDENT]
17:59:36 Duplicate Event: DUNEDIN CITYCross Street 1MORRIS RDCross Street 2QUARRY RD,
17:59:36 Type = NOT FIR2AMB NOTIFIED FIRE REQUEST AMBULANCE ASSIST, Subtype = default,
17:59:36 Caller Name = AAC [REDACTED] Call Source = 111Alarm Level1Inc Info [REDACTED]
17:59:36 [REDACTED]
17:59:36 INC INFO: [REDACTED]
17:59:36 ** LOI search completed at 07/10/15 16:02:09
17:59:36 FIRE2AMBO - [REDACTED]
17:59:36 AMBO EVENT 1213-3-2015/10/07-FIR LINKED AT 07/10/2015 16:02:41
17:59:36 FIRE COMMAND POINT SET UP
17:59:36 [REDACTED]
17:59:36 URGENT P1 RESPONSE P-LSE
17:59:36 AMBO HAVE A DUNEDIN VEHICLE AT THE TOP OF GREEN ISLAND
17:59:36 ON THE OLD MAIN SOUTH ROAD
17:59:36 ** Event Type changed from MED to NOT at: 07/10/15 16:06:29
17:59:36 ** Event Priority changed from 1 to 9 at: 07/10/15 16:06 29
17:59:36 **
17:59:36 **
17:59:36 AMBO RESPONDING FROM GREEN ISLAND
17:59:36 NOT AREA OTAGO DUTY PAGER
17:59:36 NOT REGION 5 DUTY PAGER
17:59:36 NOT OPS MANAGER SOUTHERN PAGER
17:59:36 NOT MRF SOUTHERN PAGER
17:59:36 NOT RFO OTAGO COASTAL DUTY PAGER RE INJURIES
17:59:36 Incident Closed. Reason: 510 ACC Assess and treat only
17:59:36 ** Cancel Event:Event Canceled by InterCAD
17:59:36 XXXXXXXXXXXXX
17:59:36 NOT NATIONAL OPS MANAGER UPDATED ON EVERYTHING

17:59:37 End of Duplicate Event data
17:59:38 ** Cross Referenced to Event # F1932997 at: 07/10/15 17:59:38
17:59:38 **
18:01:27 Unit DUNE2118 [SITREP :] CAN WE GET A LIST OF FIRES AFFECTING STRUCTURES -
18:01:27 STAND BY
18:03:07 Unit PORT271 [K3 : ON RT OUTSIDE NORMAL TURNOUT AREA]
18:09:47 Unit OUTR321 [K4 : ON RT INSIDE NORMAL TURNOUT AREA]
18:12:39 Unit ROSL241 [K7 : AT NORMAL STATION]
18:13:22 Unit MOSG311 [KC : UNIT CALLING]
18:14:49 MOSG311 GOING TO 43 COAL STAGE RD
18:35:13 *
18:36:12 FROM POLICE COMMS SUPERVISOR CAN THE RESIDENTS OF CHAIN HILL ROAD GO
18:36:12 BACK TO
18:36:12 THERE PROPERTYS, FIRECOM CONTACTED DUNE2118 ON THE CELLPHONE FROM THE
18:36:12 RURAL FIRE
18:36:12 OFFICER THE RESIDENTS CAN RETURN TO THERE PROPERTIES
18:36:14 *
19:00:12 Unit SOUTTRNG6 [K3 : ON RT OUTSIDE NORMAL TURNOUT AREA]
20:04:55 Unit LOOK237 [K7 : AT NORMAL STATION]
20:51:34 Unit EASTOTAGO2 [K4 : ON RT INSIDE NORMAL TURNOUT AREA]
20:51:34 Unit EASTOTAGO2 [K4 : ON RT INSIDE NORMAL TURNOUT AREA]
21:00:11 Unit RFOOTAGO8 [KC : UNIT CALLING]
21:00:42 Unit RFOOTAGO8 [K4 : ON RT INSIDE NORMAL TURNOUT AREA]
21:00:46 Unit RFOOTAGO8 [SITREP :] LEAVING THE SCENE NOW BACK ON CALL
21:48:06 Unit DUNE2118 [K2 : IN ATTENDANCE AT INCIDENT]
21:49:26 Unit DUNE2118 [KC : UNIT CALLING]
21:49:51 Unit DUNE2118 [K45 : COMMAND RESPONSIBILITY CHANGED TO - NAME] RFO [REDACTED]
21:50:43 Unit DUNE2118 [SITREP :] CONTINUING TO MONITOR TRYIN TO RELIEVE RURAL CREWS
21:50:43 NZFS CREWS CONTROLLING STRUCTURES
22:11:47 Unit WAKA9626 [K4 : ON RT INSIDE NORMAL TURNOUT AREA]
22:24:37 Unit MOSG311 [K4 : ON RT INSIDE NORMAL TURNOUT AREA]
22:38:11 Unit DUNE2118 [KC : UNIT CALLING]
22:39:05 Unit DUNE2118 [SITREP :] ROSYLN AND WILLOWBANK ATTACHED TO THE CALL 1 CHAIN
22:39:05 ROAD
22:48:36 Unit ROSL241 [K1 : PROCEEDING TO INCIDENT]
22:49:38 Unit ROSL241 [KC : UNIT CALLING]
22:50:28 Unit ROSL241 [K2 : IN ATTENDANCE AT INCIDENT]
22:50:36 Unit DUNE2118 [KC : UNIT CALLING]
22:51:08 Unit DUNE2118 [KC : UNIT CALLING]
22:52:14 Unit DUNE2118 [SITREP :] RURAL FIRE OFFICER [REDACTED] ACK PAGE FOR WAIHOLA ANY
22:52:14 FURTHER DETAILS
22:56:44 Unit WILL257 [K1 : PROCEEDING TO INCIDENT]
22:56:49 Unit WILL257 [K2 : IN ATTENDANCE AT INCIDENT]
22:56:54 AL: PAGING ACK RECEIVED FROM STATION 3625 at 07/10/15 22:56:54
23:47:56 Unit STKI221 [K1 : PROCEEDING TO INCIDENT]
23:48:41 Unit STKI221 [K2 : IN ATTENDANCE AT INCIDENT]

00:03:39 Unit ROSL241 [K4 : ON RT INSIDE NORMAL TURNOUT AREA]
01:13:11 Unit WILL257 [K3 : ON RT OUTSIDE NORMAL TURNOUT AREA]
01:46:48 Unit DUNE2118 [KC : UNIT CALLING]
01:46:56 Unit DUNE2118 [KC : UNIT CALLING]
01:47:43 Unit DUNE2118 [K26-1 : APPLIANCE STILL ENGAGED, NO ADDITIONAL DEVELOPMENTS]
01:55:23 Unit DUNE2118 [KC : UNIT CALLING]
02:01:34 Unit DUNE2118 [SITREP :] RFO [REDACTED] 1 FS APPLIANCE ON SITE.. 1 RURAL CREW ON
02:01:34 SITE.. 3 INCIDENT MANAGEMENT TEAM ON SITE..CONTINUING TO PATROL THE FIRE
GROUND
02:01:34 AND MOP UP HOT SPOTS AS THEY FIND THEM
02:38:18 Unit DUNE211 [K2 : IN ATTENDANCE AT INCIDENT]
02:38:28 Unit DUNE211 [K1 : PROCEEDING TO INCIDENT]
02:50:09 Unit DUNE211 [KC : UNIT CALLING]
02:51:15 Unit DUNE211 [KC : UNIT CALLING]
02:59:12 Unit STKI221 [K3 : ON RT OUTSIDE NORMAL TURNOUT AREA]
02:59:22 Unit DUNE211 [K2 : IN ATTENDANCE AT INCIDENT]
04:37:12 Unit DUNE2118 [KC : UNIT CALLING]
04:37:44 Unit DUNE211 [K22-1 : UNIT AVAILABLE FOR A FURTHER EVENT]
04:47:45 Unit DUNE2118 [KC : UNIT CALLING]
05:19:25 Unit RFOOTAGO1 [K1 : PROCEEDING TO INCIDENT]
05:28:56 Unit DUNE2118 [KC : UNIT CALLING]
05:29:59 Unit DUNE2118 [SITREP :] CAN YOU REPEAT MESSAGE TO DUNE211 - PASSED
05:31:27 Unit DUNE2118 [KC : UNIT CALLING]
05:32:17 Unit DUNE2118 [SITREP :] COULD YOU GET POLICE TO LIASE WITH 211 AT 47 SADDLE
05:32:17 HILL RD TO SEE WHERE THE FLARE UP IS AS IT IS A HUGE AREA AND WE HAVE A LOT OF
05:32:17 HOTSPOTS
05:34:16 ** Event Type changed from FIR2POL to 1F(2)-at: 08/10/15 05:34:16
05:34:16 **
05:34:19 FIR2POL CAN YOU LIAISE WITH OUR CREW AT THE SCENE UP SADDLE HILL RD
05:34:35 .
05:34:36 RRRR
05:38:20 Unit RFOOTAGO1 [K2 : IN ATTENDANCE AT INCIDENT]
05:42:11 Unit DUNE2118 [COMCEN COM : MESSAGE] DUNE211 TO PHONE DUNEDIN POLICE UNIT
ON
05:42:11 [REDACTED] RE A JOB IN THE AREA
05:54:00 Unit LOOK237 [K1 : PROCEEDING TO INCIDENT]
06:00:18 Unit LOOK237 [K2 : IN ATTENDANCE AT INCIDENT]
07:22:24 Unit DUNE2118 [KC : UNIT CALLING]
07:23:37 Unit DUNE2118 [COMCEN COM : MESSAGE] NO AUDIO RECEIVED
07:26:29 DNS1 AWARE.
07:31:16 Unit LOOK237 [K3 : ON RT OUTSIDE NORMAL TURNOUT AREA]
07:33:08 Unit MOSG311 [K2 : IN ATTENDANCE AT INCIDENT]
07:36:44 Unit RURALDUNE1 [K1 : PROCEEDING TO INCIDENT]
07:36:51 Unit RURALDUNE1 [K1 : PROCEEDING TO INCIDENT]
07:38:08 Unit DUNE2118 [KC : UNIT CALLING]
07:39:45 MXS WILL DEAL WHEN LOGS ON.

07:39:59 Unit DUNE2118 [SITREP :] RFO [REDACTED] CREW CHANGE OVER NOW TAKING PLACE
15
07:39:59 RURAL FF PREPARING FOR TASKING, ASSESSING THE SITUATION, OPENING ROADS AND
07:39:59 LETTING RESIDENTS BACK IN
07:40:54 INC INFO: VEGETATION FIRE
08:04:39 Unit RURALDUNE1 [K2 : IN ATTENDANCE AT INCIDENT]
08:09:24 Unit DUNE2118 [KC : UNIT CALLING]
08:09:53 Unit DUNE2118 [SITREP :] UPDATED WEATHER FORECAST PLEASE
08:16:29 Unit DUNE2118 [COMCEN COM : MESSAGE] CLOUDY PERIODS AND A FEW SHOWERS,
WIND
08:16:29 WEST/SOUTH-WEST AVERAGING 13KM/H, HIGH OF 12 DEG, SMALL AMOUNT OF RAIN
FORECAST
08:16:29 UNTIL AFTER LUNCH, LITTLE RAIN FORECAST THIS AFTERNOON
08:16:45 Unit DUNE2118 [KC : UNIT CALLING]
08:18:10 Unit DUNE2118 [SITREP :] FYI, SHOULD YOU GET ANY ENQUIRIES, RESIDENTS WILL BE
08:18:10 ALLOWED INTO THE EFFECTED AREA BUT CORDONS WILL STILL BE IN PLACE
08:22:05 Unit EASTOTAGO2 [K1 : PROCEEDING TO INCIDENT]
08:22:06 Unit EASTOTAGO2 [K1 : PROCEEDING TO INCIDENT]
08:24:19 ** Event Location changed from "MORRIS RD,KINMONT PARK,DUNEDIN CITY" to "MORRIS
08:24:19 RD,KINMONT PARK,DUNEDIN CITY: CHAIN HILLS COMMAND" at: 08/10/15 08:24:19
08:24:19 **
08:24:37 ** Event Location changed from "MORRIS RD,KINMONT PARK,DUNEDIN CITY: CHAIN HILLS
08:24:37 COMMAND" to "MORRIS RD,KINMONT PARK,DUNEDIN CITY" at: 08/10/15 08:24:37
08:24:37 **
08:26:52 .
08:27:01 FIRE COMMAND ADVISED POLICE NOT REQ AT THIS STAGE
08:27:19 CORDONS TO REMAIN IN PLACE TILL LATEER THIS MORNING
08:27:29 THEN DECISION WHEN PEOPOLE CAN RETURN TO HOUSES.
08:36:01 Unit EASTOTAGO2 [K2 : IN ATTENDANCE AT INCIDENT]
08:36:01 Unit EASTOTAGO2 [K2 : IN ATTENDANCE AT INCIDENT]
09:00:58 Unit DUNE2118 [KC : UNIT CALLING]
09:02:13 Unit DUNE2118 [K45 : COMMAND RESPONSIBILITY CHANGED TO - NAME] [REDACTED]
09:02:43 Unit DUNE2118 [K11E : ELECTRICAL AUTHORITY REQUIRED] TO 43 COALSTAGE ROAD,
09:02:43 POWER POLE COMPROMISED, WIRES NEAR FALLING DOWN
09:27:11 Unit DUNE2118 [KC : UNIT CALLING]
09:28:24 Unit DUNE2118 [SITREP :] ON DUTY FI TO CONTACT COMMAND UNIT
09:29:32 *
09:29:48 *
09:37:12 *
09:40:11 Unit EASTOTAGO2 [K4 : ON RT INSIDE NORMAL TURNOUT AREA]
09:46:36 Unit RFOOTAGO1 [KC : UNIT CALLING]
09:47:12 Unit RFOOTAGO1 [SITREP :] I AM NOW LEAVING SADDLE HILL CMD, K6
09:47:17 Unit RFOOTAGO1 [K6 : ON TELEPAGER]
10:11:40 Unit FIOTAGO1 [KC : UNIT CALLING]
10:11:59 Unit FIOTAGO1 [K1 : PROCEEDING TO INCIDENT]
10:12:10 Unit FIOTAGO1 [SITREP :] COULD YOU PLEASE ATTACH ME TO THE CHAIN HILLS FIRE
10:36:09 Unit FIOTAGO1 [K2 : IN ATTENDANCE AT INCIDENT]

11:08:10 Unit RFOOTAGO4 [K22-1 : UNIT AVAILABLE FOR A FURTHER EVENT]
 11:09:49 Unit RFOOTAGO4 [K1 : PROCEEDING TO INCIDENT]
 11:32:53 ** Cross Referenced to Event # F1933629 at: 08/10/15 11:32:53
 11:32:53 **
 11:34:25 Unit DUNE2118 [COMCEN COM : MESSAGE] SMOULDERING HEDGE FIRE, 1 CHAIN HILLS RD
 11:34:29 Unit DUNE2118 [KP : PRIORITY MESSAGE]
 11:35:20 Unit MOSG311 [KC : UNIT CALLING]
 11:36:43 Unit DUNE2118 [SITREP :] RESPOND AN APPLIANCE, MOSGIEL LOOKS LIKE YOUR
 11:36:43 PREFERENCE, TO 1 CHAIN HILLS RD, UNABLE TO CONTACT RURAL FIRE AT THIS TIME
 11:37:11 Unit DUNE2118 [COMCEN COM : MESSAGE] WE ARE SHOWING MOSG311 K2 AT MORRIS RD WITH
 11:37:11 YOU, IS THAT THE APPLIANCE YOU WANT RESPONDED
 11:37:13 Unit RURALDUNE1 [KC : UNIT CALLING]
 11:37:16 Unit DUNE2118 [SITREP :] STAND BY
 11:37:38 Unit RURALDUNE1 [KC : UNIT CALLING]
 11:37:53 Unit MOSG311 [SITREP :] WHAT HAVE YOU GOT (DETAILS PASSED)
 11:38:16 Unit RURALDUNE1 [SITREP :] RESPONDING TO 1 CHAIN HILLS ROAD
 11:38:33 Unit RURALDUNE1 [K1 : PROCEEDING TO INCIDENT]
 11:38:59 Unit RFOOTAGO4 [K1 : PROCEEDING TO INCIDENT]
 11:39:54 Unit RURALDUNE1 [K2 : IN ATTENDANCE AT INCIDENT]
 11:41:45 Unit RFOOTAGO4 [K2 : IN ATTENDANCE AT INCIDENT]
 11:44:55 Unit DUNE2118 [SITREP :] MOSG311 ON SCENE AT 1 CHAIN HILLS RD. 1 HPD IN USE
 11:45:49 Unit RURALDUNE1 [K4 : ON RT INSIDE NORMAL TURNOUT AREA]
 11:46:34 Unit RURALDUNE1 [K2 : IN ATTENDANCE AT INCIDENT]
 11:55:38 Unit MOSG311 [K4 : ON RT INSIDE NORMAL TURNOUT AREA]
 12:07:25 Unit RFOOTAGO4 [K6 : ON TELEPAGER]
 14:06:29 Unit RFOOTAGO4 [K1 : PROCEEDING TO INCIDENT]
 14:06:59 RFOOTAGO4 RESPONDING AS F
 14:17:47 Unit RFOOTAGO4 [K2 : IN ATTENDANCE AT INCIDENT]
 15:59:28 *
 16:00:45 *
 16:25:45 Unit DUNE2118 [KC : UNIT CALLING]
 16:26:49 Unit DUNE2118 [SITREP :] FROM RURAL FIRE, ARE YOU ABLE TO PLEASE PROVIDE
 16:26:49 WEATHER FORECAST FOR THE NEXT 12 HOURS FOR THE MOSGIEL AREA
 16:32:16 *
 16:33:32 WEATHER FORECAST DUNEDIN NEXT 12 HOURS - FEW SHOWERS, NOTHING
 16:33:32 SIGNIFICANT. TEMPS
 16:33:32 DOWN TO 8 OVERNIGHT, UP TO 10 DEGREES BY 0600HRS.
 16:34:37 WIND SPEED UP TO 9 KM/H WESTERLEY.
 16:36:48 *
 16:43:16 Unit DUNE2118 [COMCEN COM : MESSAGE] WEATHER FORECAST PASSED
 16:46:00 Unit DUNE2118 [KC : UNIT CALLING]
 16:47:21 Unit DUNE2118 [SITREP :] ADVISE POLICE, CLEARANCE HAS BEEN GIVEN TO OPEN THE
 16:47:21 ROADS AROUND SADDLE HILL, IF THEY COULD PLEASE ALSO ARRANGE TO HAVE SIGNS
 16:47:21 AND
 16:47:21 ROAD CONES UPLIFTED

16:48:20 .
16:48:24 FIR2POL - MESSAGE FROM COMMAND POINT - CLEARANCE HAS BEEN GIVEN TO OPEN THE
16:48:24 ROADS AROUND SADDLE HILL, COULD YOU PLEASE ARRANGE TO HAVE SIGNS AND ROAD CONES
16:48:24 UPLIFTED
16:48:31 .
16:50:02 FIRE SERVICE CALLING THE COUNCIL
16:52:30 ALL SORTED
16:52:39 HEADLINE: VEGETATION FIRE
16:58:28 *
17:14:49 Unit RURALDUNE1 [KC : UNIT CALLING]
17:17:39 Unit RURALDUNE1 [SITREP :] IC [REDACTED] WE WILL BE MOVING ICP TO THE
17:17:39 CORNER OF MCMASTER AND SADDLE HILL ROAD ABOUT NOW, AND WE WILL BE DOING A CREW
17:17:39 CHANGE FOR THE NIGHT SHIFT AT 1800 HRS
17:18:13 ** Event Location changed from "MORRIS RD,KINMONT PARK,DUNEDIN CITY" to "SADDLE
17:18:13 HILL RD,/MCMASTER RD,SADDLE HILL,DUNEDIN CITY" at: 08/10/15 17:18:13
17:18:13 **
17:18:16 ** LOI search completed at 08/10/15 17:18:16
17:18:35 ** Event Type changed from STRU to VEG at: 08/10/15 17:18:35
17:18:35 **
17:18:36 ** Event Priority changed from 1 to 2 at: 08/10/15 17:18:36
17:18:36 **
17:27:38 Unit DUNE2118 [K4 : ON RT INSIDE NORMAL TURNOUT AREA]
18:21:02 XXXX
18:22:30 CHANGE OF COMMAND FROM RURALDUNEDIN1 RFO [REDACTED] DOESN'T HAVE
UTE WITH
18:22:30 LMR SO ANY SITREPS WILL BE VIA PHONE, CREW OF 2 WITH SMOKE CHASER
POTROLLING
18:22:30 AREA OVERNIGHT
18:23:17 THERE WILL ALSO BE A FIRE APPLIANCE LEFT HERE OVER NIGHT (WAINETA FORRESTRY)
18:23:17 PARKED IN PADDOCK ON SADDLE HILL ROAD
18:23:58 Unit FIOTAGO1 [K6 : ON TELEPAGER]
18:24:35 WE ARE GOING TO PUT A GROUND CREW IN TOMORROW MORNING DOING MOP UP
18:24:42 XXXXXXX
18:25:47 Unit RURALDUNE1 [K4 : ON RT INSIDE NORMAL TURNOUT AREA]
18:26:01 Unit RURALDUNE1 [K45 : COMMAND RESPONSIBILITY CHANGED TO - NAME] RFO [REDACTED]
18:32:56 FIOTAGO1 HAS LEFT THE SCENE AND WILL RETURN TOMORROW MORNING (9/10/15)
19:56:47 Unit RFOOTAGO4 [K6 : ON TELEPAGER]
19:59:14 **
19:59:15 **
19:59:20 RFOOTAGO4 ADVISES HE WILL BE RETURNING IN THE MORNING TO CONTINUE THE
19:59:20 INVESTIGATION
20:15:06 Unit RFOOTAGO4 [K2 : IN ATTENDANCE AT INCIDENT]

Additional Calls Message Log

Time	Message
13:51:40	Duplicate Event:Location = QUARRY RD,KINMONT PARK,DUNEDIN CITY, Type = VEG -
13:51:40	VEGETATION FIRE, Caller Name = PREPAID/PREPAID, Caller Ph Number = [REDACTED]
13:51:40	Caller Address = TELECOM CELLULAR 027, UNKNOWN, UNKNOWN, Call Source = 111Inc
13:51:40	InfoVEGETATION FIRE, Event Source = Fire 111
13:51:40	INC INFO: VEGETATION FIRE
13:51:40	End of Duplicate Event data
13:51:49	Duplicate Event:Location = MORRIS RD,KINMONT PARK,DUNEDIN CITY, Type = MIN -
13:51:49	MINOR, Caller Name = [REDACTED] Caller Ph Number = [REDACTED] Caller
13:51:49	Address = [REDACTED] FORFAR STREET, MOSGIEL, DUNEDIN CITY, Call Source = 111Inc
13:51:49	InfoSMOKE ABOVE KINMONT, Event Source = Fire 111
13:51:49	INC INFO: SMOKE ABOVE KINMONT
13:51:49	End of Duplicate Event data
13:54:31	Duplicate Event:Location = MORRIS RD,KINMONT PARK,DUNEDIN CITY, Type = VEG -
13:54:31	VEGETATION FIRE, Caller Name = [REDACTED] Caller Ph Number
13:54:31	= [REDACTED] Caller Address = [REDACTED] MCGLASHAN STREET, MOSGIEL, DUNEDIN CITY, Call
13:54:31	Source = 111, Event Source = Fire 111
13:54:31	INC INFO:
13:54:31	End of Duplicate Event data
13:54:52	Duplicate Event:Location = MORRIS RD,FAIRFIELD,DUNEDIN CITY, Type = VEG -
13:54:52	INC INFO:
13:54:52	VEGETATION FIRE, Caller Ph Number = [REDACTED] Call Source = 111, Event Source
13:54:52	= Fire 111
13:54:52	End of Duplicate Event data
13:55:50	Duplicate Event:Location = MORRIS RD,KINMONT PARK,DUNEDIN CITY, Type = VEG -
13:55:50	VEGETATION FIRE, Caller Name = VODAFONE NEW ZEALAND LTD, Caller Ph Number =
13:55:50	[REDACTED] Caller Address = [REDACTED] THE OCTAGON, DUNEDIN CENTRAL, DUNEDIN CITY,
13:55:50	Call Source = 111Inc InfoVEGETATION FIRE, Event Source = Fire 111
13:55:50	INC INFO: VEGETATION FIRE
13:55:50	End of Duplicate Event data
13:57:32	Duplicate Event:Location = MORRIS RD,KINMONT PARK,DUNEDIN CITY, Type = VEG -
13:57:32	VEGETATION FIRE, Caller Name = [REDACTED] Caller Ph Number =
13:57:32	[REDACTED] Caller Address = TELECOM CELLULAR 027, UNKNOWN, UNKNOWN, Call
13:57:32	Source = 111, Event Source = Fire 111
13:57:33	INC INFO:
13:57:33	MULTIPLE SUBSCRIBERS FOR CALLER NUMBER [REDACTED] TESA LOOKUP
13:57:33	RECOMMENDED.
13:57:33	End of Duplicate Event data
13:58:18	Duplicate Event:Location = MORRIS RD,KINMONT PARK,DUNEDIN CITY, Type = VEG -
13:58:18	VEGETATION FIRE, Caller Name = VODAFONE NEW ZEALAND LTD, Caller Ph Number =
13:58:18	[REDACTED] Caller Address = [REDACTED] WICKLIFFE STREET, MOSGIEL, DUNEDIN CITY, Call
13:58:18	Source = 111, Event Source = Fire 111

13:58:19 INC INFO:
13:58:19 End of Duplicate Event data
13:58:22 Duplicate Event:Location = MORRIS RD,KINMONT PARK,DUNEDIN CITY, Type = VEG -
13:58:22 VEGETATION FIRE, Caller Name = SILVERSTREAM SOUTH PRIMARY SCHOOL, Caller Ph
13:58:22 Number = [REDACTED] Caller Address = [REDACTED] GREEN STREET, MOSGIEL, DUNEDIN CITY,
13:58:22 Call Source = 111Inc InfoVEGETATION FIRE, Event Source = Fire 111
13:58:22 INC INFO: VEGETATION FIRE
13:58:22 End of Duplicate Event data
13:58:44 Duplicate Event:Location = MORRIS RD,KINMONT PARK,DUNEDIN CITY, Type = VEG -
13:58:44 VEGETATION FIRE, Caller Ph Number = [REDACTED] Call Source = 111Inc
13:58:44 InfoVEGETATION FIRE, Event Source = Fire 111
13:58:44 INC INFO: VEGETATION FIRE
13:58:45 End of Duplicate Event data
13:59:37 Duplicate Event:Location = MORRIS RD,KINMONT PARK,DUNEDIN CITY, Type = VEG -
13:59:37 VEGETATION FIRE, Caller Ph Number = [REDACTED] Call Source = 111Inc
13:59:37 InfoVEGETATION FIRE, Event Source = Fire 111
13:59:37 INC INFO: VEGETATION FIRE
13:59:37 End of Duplicate Event data
13:59:52 Duplicate Event:Location = MORRIS RD,KINMONT PARK,DUNEDIN CITY, Type = VEG -
13:59:52 VEGETATION FIRE, Caller Name = PREPAID/TELECOM, Caller Ph Number = [REDACTED]
13:59:52 Caller Address = TELECOM CELLULAR 027, UNKNOWN, UNKNOWN, Call Source = 111,
13:59:52 Event Source = Fire 111
13:59:52 INC INFO:
13:59:52 End of Duplicate Event data
14:09:02 Duplicate Event:Location = MORRIS RD,KINMONT PARK,DUNEDIN CITY, Type = VEG -
14:09:02 VEGETATION FIRE, Caller Name = [REDACTED] Caller Ph Number =
14:09:02 [REDACTED] Caller Address = TELECOM CELLULAR 027, UNKNOWN, UNKNOWN, Call
14:09:02 Source = 111, Event Source = Fire 111
14:09:02 INC INFO:
14:09:02 End of Duplicate Event data
14:12:42 Duplicate Event:Location = MORRIS RD,KINMONT PARK,DUNEDIN CITY, Type = VEG -
14:12:42 VEGETATION FIRE, Caller Name = [REDACTED] Caller Ph Number = [REDACTED]
14:12:42 Caller Address = [REDACTED] LNP FICT., Call Source = 111, Event Source = Fire 111
14:12:42 INC INFO:
14:12:42 End of Duplicate Event data
15:45:31 Duplicate Event:Location = 1 CHAIN HILLS RD,CHAIN HILLS,DUNEDIN CITY, Type =
15:45:31 STRU - STRUCTURE FIRE, Caller Name = VODAFONE NEW ZEALAND LTD, Caller Ph Number
15:45:31 = [REDACTED] Caller Address = [REDACTED] MAIN SOUTH ROAD, GREEN ISLAND, DUNEDIN CITY,
15:45:31 Call Source = 111Inc InfoHOUSE FIRE, Event Source = Fire 111
15:45:32 INC INFO: HOUSE FIRE
15:45:32 End of Duplicate Event data
17:18:39 Duplicate Event:Location = MORRIS RD,FAIRFIELD,DUNEDIN CITY, Type = VEG -
17:18:39 INC INFO:
17:18:39 VEGETATION FIRE, Caller Ph Number = [REDACTED] Call Source = 111, Event Source
17:18:39 = Fire 111

17:18:39 End of Duplicate Event data
17:18:39 Duplicate Event:Location = MORRIS RD,KINMONT PARK,DUNEDIN CITY, Type = VEG -
17:18:39 INC INFO: SCRUB FIRE
17:18:39 VEGETATION FIRE, Caller Ph Number = [REDACTED] Call Source = 111Inc InfoSCRUB
17:18:39 FIRE, Event Source = Fire 111
17:18:39 End of Duplicate Event data
17:18:39 Duplicate Event:Location = MORRIS RD,KINMONT PARK,DUNEDIN CITY, Type = VEG -
17:18:39 VEGETATION FIRE, Caller Name = NEW ZEALAND POLICE, Caller Ph Number =
17:18:39 1042383000, Caller Address = 18 PAKOWHAI ROAD, PAKOWHAI, PORIRUA CITY, Call
17:18:39 Source = 111Inc InfoVEGETATION FIRE, Event Source = Fire 111
17:18:39 End of Duplicate Event data
17:18:39 Duplicate Event:Location = MORRIS RD,KINMONT PARK,DUNEDIN CITY, Type = VEG -
17:18:39 VEGETATION FIRE, Caller Name = TRANSPORT SALES LTD, Caller Ph Number =
17:18:39 [REDACTED] Caller Address = TELECOM CELLULAR 027, UNKNOWN, UNKNOWN, Call Source
17:18:39 = 111Inc InfoSCRUB FIRE, Event Source = Fire 111
17:18:39 INC INFO: SCRUB FIRE
17:18:39 End of Duplicate Event data
17:18:39 Duplicate Event:Location = MORRIS RD,CHAIN HILLS,DUNEDIN CITY, Type = VEG -
17:18:39 INC INFO: FIRE ON HILL
17:18:39 VEGETATION FIRE, Caller Name = [REDACTED] Caller Ph Number = [REDACTED]
17:18:39 MULTIPLE SUBSCRIBERS FOR CALLER NUMBER [REDACTED] TESA LOOKUP
17:18:39 RECOMMENDED.
17:18:39 Caller Address = [REDACTED] WATSON STREET, GREEN ISLAND, DUNEDIN CITY, Call Source =
17:18:39 111Inc InfoFIRE ON HILL, Event Source = Fire 111
17:18:39 End of Duplicate Event data
17:18:39 Duplicate Event:Location = DUNEDIN SOUTHERN MWY,FAIRFIELD,DUNEDIN CITY, Type =
17:18:39 VEG - VEGETATION FIRE, Caller Name = NASH & ROSS LTD, Caller Ph Number =
17:18:39 [REDACTED] Caller Address = TELECOM CELLULAR 027, UNKNOWN, UNKNOWN, Call
17:18:39 Source = 111Inc InfoFIRE ON HILLSIDE, Event Source = Fire 111
17:18:39 End of Duplicate Event data
17:18:39 Duplicate Event:Location = MORRIS RD,KINMONT PARK,DUNEDIN CITY, Type = VEG -
17:18:39 VEGETATION FIRE, Caller Name = [REDACTED] Caller Ph Number =
17:18:39 [REDACTED] Caller Address = [REDACTED] KENT PLACE, MOSGIEL,, Call Source = 111Inc
17:18:39 InfoVEGETATION FIRE, Event Source = Fire 111
17:18:39 End of Duplicate Event data
17:18:39 Duplicate Event:Location = COALSTAGE RD,KINMONT PARK,DUNEDIN CITY, Type = VEG -
17:18:39 INC INFO:
17:18:39 VEGETATION FIRE, Caller Name = VODAFONE NEW ZEALAND LTD, Caller Ph Number =
17:18:39 [REDACTED] Caller Address = [REDACTED] OLD BRIGHTON ROAD, FAIRFIELD, DUNEDIN CITY,
17:18:39 Call Source = 111, Event Source = Fire 111
17:18:39 End of Duplicate Event data
17:18:39 Duplicate Event:Location = DUNEDIN SOUTHERN MWY,CHAIN HILLS,DUNEDIN CITY, Type =
17:18:39 INC INFO: SMOKE IN AREA
17:18:39 VEG - VEGETATION FIRE, Caller Ph Number = [REDACTED] Call Source = 111Inc
17:18:39 InfoSMOKE IN AREA, Event Source = Fire 111
17:18:39 End of Duplicate Event data

17:18:39 Duplicate Event:Location = 41 SADDLE HILL RD DUNEDIN CITYCross Street 1COALSTAGE
17:18:39 RDCross Street 2MCMaster RD, Type = VEG VEGETATION FIRE, Subtype = default,
17:18:39 Caller Name = [REDACTED] Caller Ph Number = [REDACTED] Caller
17:18:39 Address = TELECOM CELLULAR 027, UNKNOWN, UNKNOWN, Call Source = 111Alarm
17:18:39 Level1Inc InfoTREES ON FIRE, Event Source = Fire 111
17:18:39 INC INFO: TREES ON FIRE
17:18:39 ** LOI search completed at 07/10/15 14:14:38
17:18:39 THREATENING HOUSES AT 43 AND 41 SADDLE HILL RD
17:18:39 Duplicate Event Location = 41 SADDLE HILL RD,SADDLE HILL,DUNEDIN CITY, Type =
17:18:39 STRU - STRUCTURE FIRE, Caller Name = [REDACTED] Caller Ph Number =
17:18:39 [REDACTED] Caller Address = [REDACTED] SADDLE HILL ROAD, SADDLE HILL, DUNEDIN CITY,
17:18:39 Call Source = 111Inc InfoBUSH ON FIRE THREAT HOUSE, Event Source = Fire 111
17:18:39 INC INFO: BUSH ON FIRE THREAT HOUSE
17:18:39 End of Duplicate Event data
17:18:39 Duplicate Event:Location = MORRIS RD,CHAIN HILLS,DUNEDIN CITY, Type = VEG -
17:18:39 INC INFO:
17:18:39 VEGETATION FIRE, Caller Name = [REDACTED] Caller Ph Number =
17:18:39 [REDACTED] Caller Address = [REDACTED] HIGH STREET, MOSGIEL, DUNEDIN CITY, Call Source
17:18:39 = 111, Event Source = Fire 111
17:18:39 End of Duplicate Event data
17:18:39 Duplicate Event:Location = 1 CHAIN HILLS RD,CHAIN HILLS,DUNEDIN CITY, Type = VEG
17:18:39 - VEGETATION FIRE, Caller Ph Number = [REDACTED] Call Source = 111Inc
17:18:39 InfoSMOKE IN AREA, Event Source = Fire 111
17:18:39 End of Duplicate Event data
17:18:39 Duplicate Event:Location = MORRIS RD,CHAIN HILLS,DUNEDIN CITY, Type = VEG -
17:18:39 VEGETATION FIRE, Caller Name = [REDACTED] Caller Ph Number =
17:18:39 BETWEEN SADDLE HILL
17:18:39 INC INFO: FIRE NEAR SADDLE ROAD
17:18:39 [REDACTED] Caller Address = [REDACTED] CORSTORPHINE ROAD, CORSTORPHINE, DUNEDIN CITY,
17:18:39 Call Source = 111Inc InfoFIRE NEAR SADDLE ROAD, Event Source = Fire 111
17:18:39 End of Duplicate Event data
17:18:39 Duplicate Event:Location = MORRIS RD,CHAIN HILLS,DUNEDIN CITY, Type = VEG -
17:18:39 ANOTHER CALLER, RINGING FROM ABBORTSFORT BELIEVES THERE IS A 2ND FIRE
17:18:39 STARTING
17:18:39 TO THE LEFT OF MAIN FIRE, NEW TO AREA AND DOESNT KNOW ANY ROAD NAMES
17:18:39 VEGETATION FIRE, Caller Name = [REDACTED] Caller Ph Number = [REDACTED]
17:18:39 INC INFO:
17:18:39 Caller Address = [REDACTED] MIDDLETON ROAD, KEW, DUNEDIN CITY , Call Source = 111, Event
17:18:39 Source = Fire 111
17:18:39 End of Duplicate Event data
11:32:52 Duplicate Event:Location = 1 CHAIN HILLS RD DUNEDIN CITYCross Street 1MORRIS
11:32:52 RDCross Street 2FLOWER ST, Type = ADV ADVISED, Subtype = default, Caller Name =
11:32:52 [REDACTED] Caller Ph Number = [REDACTED] Caller Address = 1 CHAIN HILLS ROAD,
11:32:52 CHAIN HILLS, DUNEDIN CITY, Call Source = 111Alarm Level1Inc InfoHEDGE FIRE STILL
11:32:52 SMOULDERING, Event Source = Fire 111
11:32:53 INC INFO: HEDGE FIRE STILL SMOULDERING

11:32:53

** LOI search completed at 08/10/15 11:30:54

11:32:53

End of Duplicate Event data

Released under the Official Information Act 1982

The information contained in this report is subject to the provisions of the Official Information Act 1982 and the Privacy Act 1993. Neither the information nor the report should be released to any person outside the NZ Fire Service or the National Rural Fire Authority without prior approval.

Some message timestamps may differ to actual times in multi-agency incidents. Communication Centres can supply correct times if essential.

Appendix 6 Witness Identification Log.

Witness 1- Landowners of [REDACTED]
[REDACTED]

Witness 2- Friends of the [REDACTED]
[REDACTED]

Witness 3- Local Mossiel Businessman who saw the smoke from [REDACTED]
[REDACTED]

Witness 4- Passerby who saw smoke and came upon the scene very early.
[REDACTED]

Witness 5- Delta employees.

Audio recording was of a staff member named [REDACTED] Contact Matt Sadgrove [REDACTED] for details

Released under the Official Information Act 1982