

Education New Zealand
Manapou ki te Ao
Level 5, Lambton House
160 Lambton Quay
PO Box 12041
Wellington 6144
New Zealand

P: +64 4 472 0788
E: info@enz.govt.nz

www.enz.govt.nz
www.studyinnewzealand.govt.nz

4 November 2022

John Luke
fyi-request-20774-2eefdbdb@requests.fyi.org.nz

Dear John

Official Information Act 1982 request – ENZ organisation chart

I refer to your official information act request (OIA), received by Education New Zealand (ENZ) on 6 October 2022:

- 1. May I request an updated org chart for ENZ and salary band for each position. Also please provide salary range for each salary band. Further please indicate if any position within the org chat are currently vacant.**
 - Please find attached the updated organisation chart along with the salary band for each position and the salary range for each salary band as 'Appendix A'. The vacant positions are identified in the organisation chart.
- 2. May I understand your general staff benefit package as well, e.g. gym membership etc.**
 - ENZ provides a contribution to Kiwisaver to all eligible New Zealand based employees and access to [EAP services](#) to all its employees, both in New Zealand and offshore

In preparing this information release ENZ has considered the public interest considerations in section 9(1) of the Official Information Act. You have the right to seek an investigation and review by the Ombudsman of this decision.

Information about how to make a complaint is available at <https://www.ombudsman.parliament.nz/> or freephone 0800 802 602.

Please note that it is our policy to proactively release our responses to official information requests, where possible. We do not publish requesters' personal information. We will let you know when we respond to your request if we intend to publish it. Please contact us if you have any questions about this.

Yours sincerely

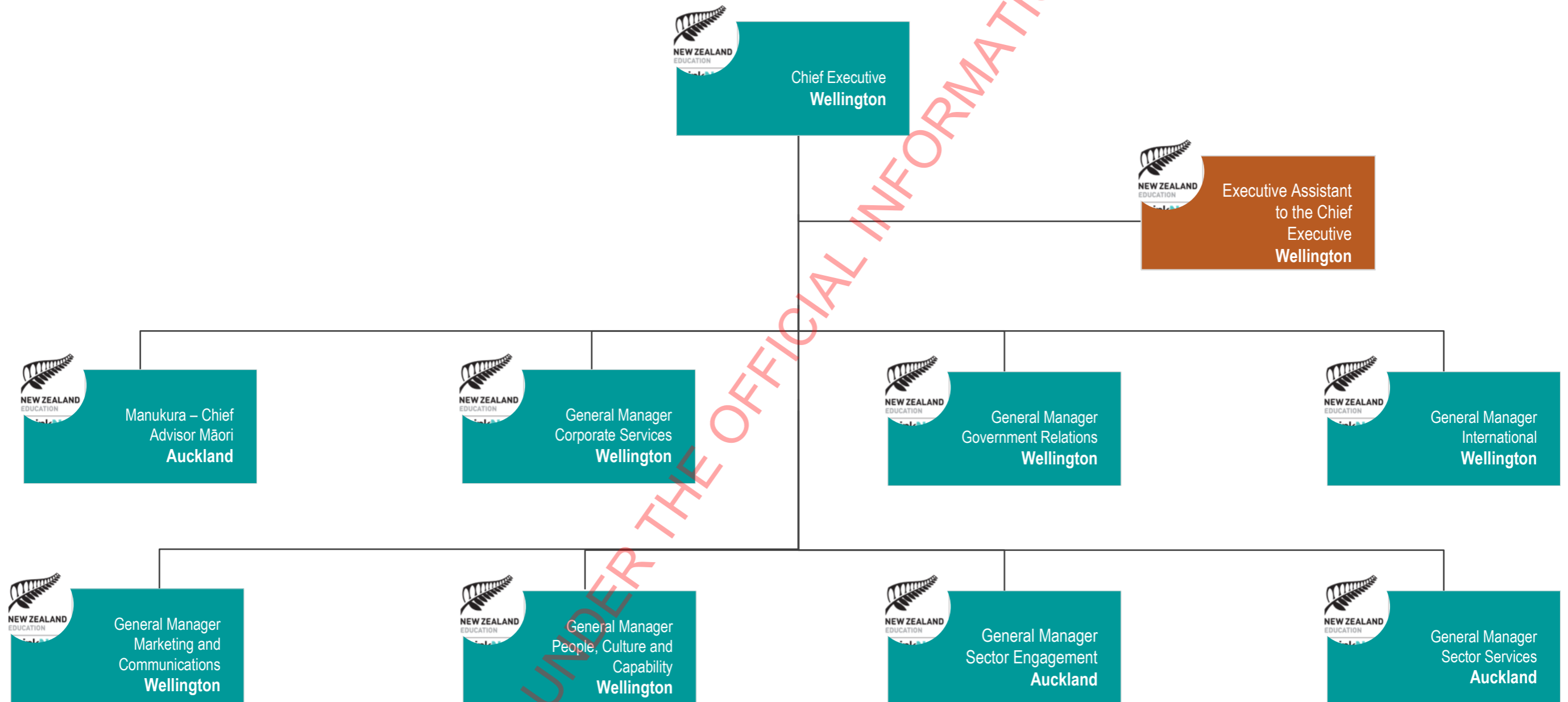


Di Solomon
General Manager
Government Relations

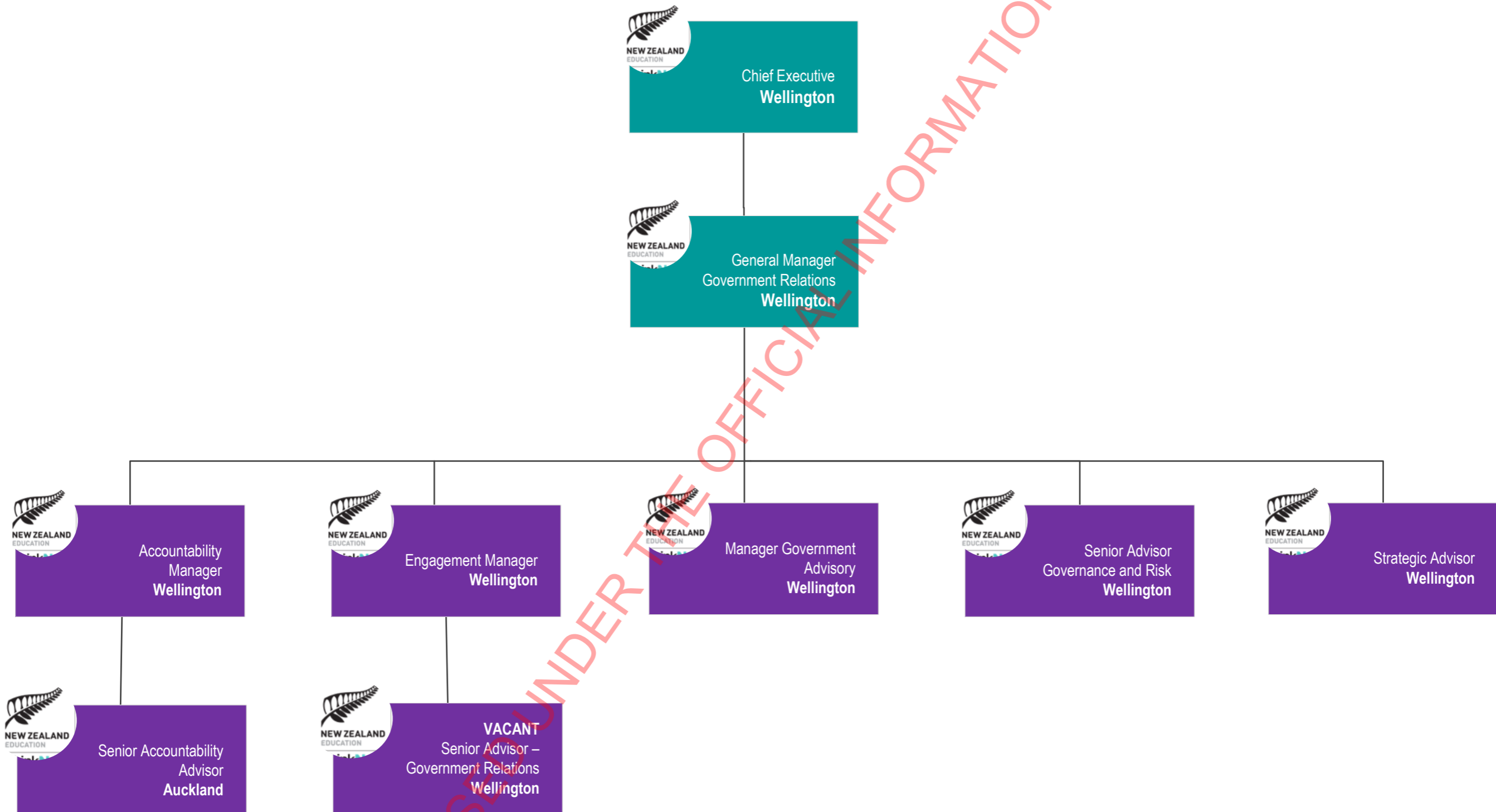
EDUCATION NEW ZEALAND MANAPOU KI TE AO ORGANISATION CHART



SENIOR LEADERSHIP TEAM

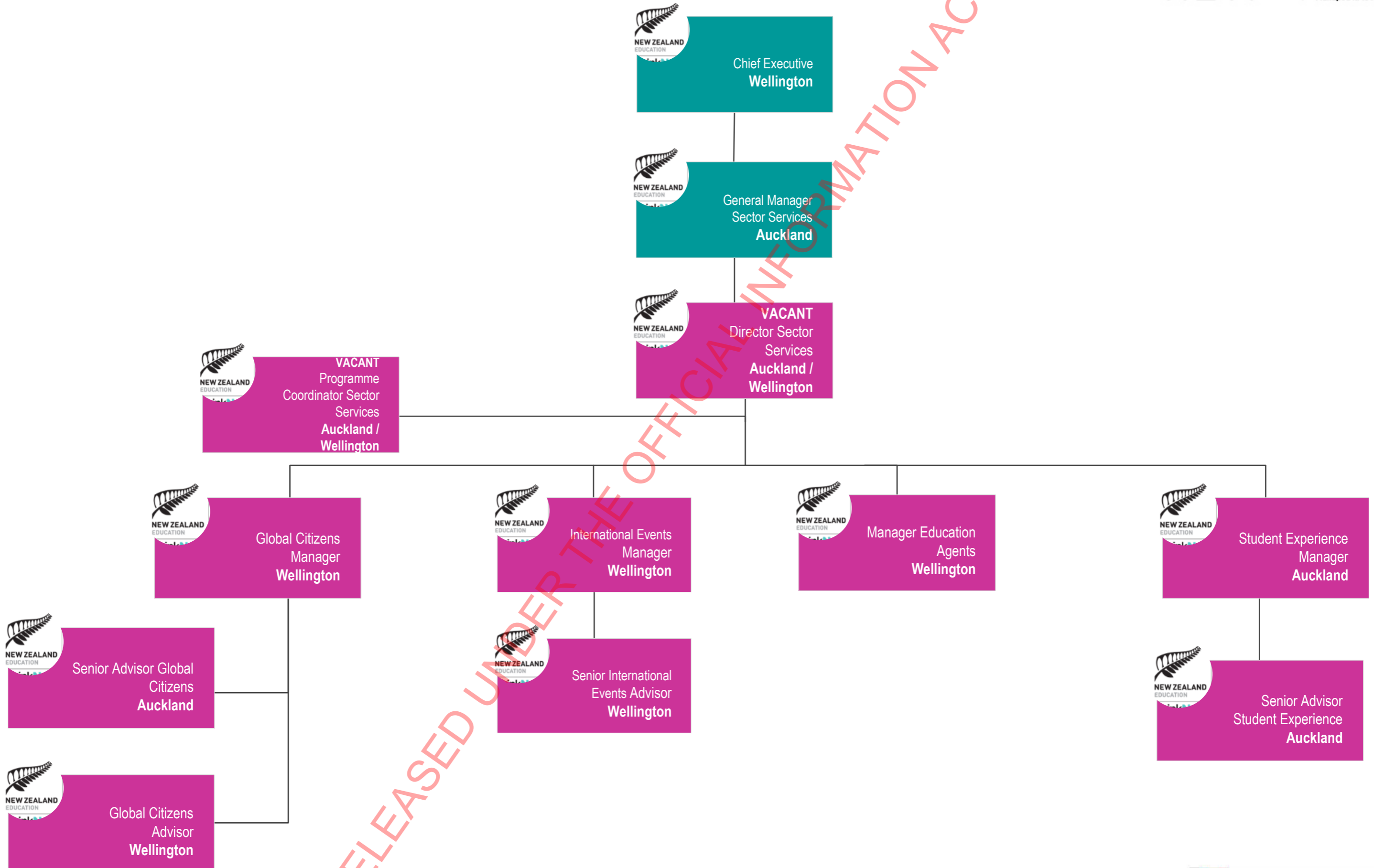


Government Relations



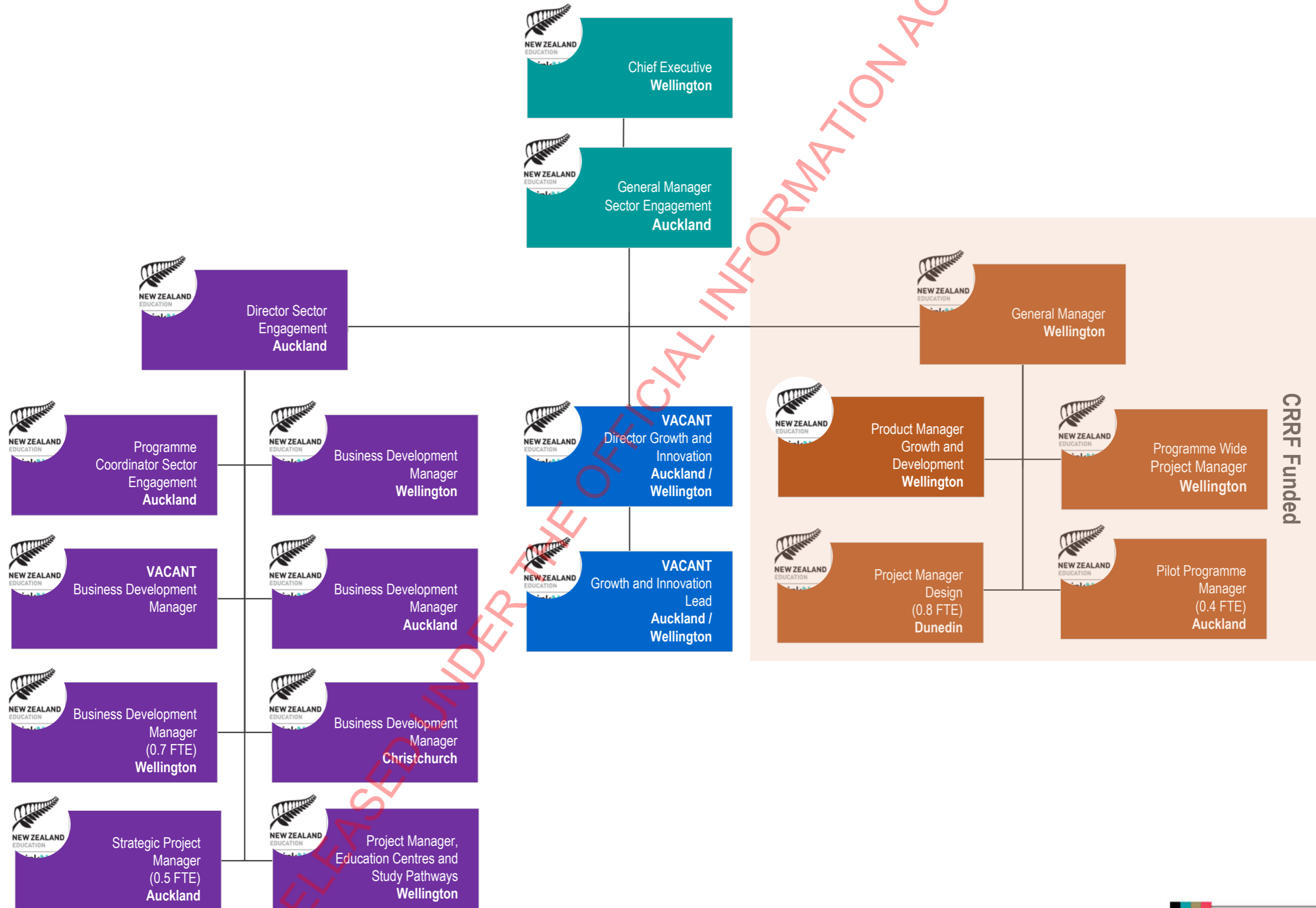
EDUCATION NEW ZEALAND MANAPOU KI TE AO ORGANISATION CHART

Sector Services

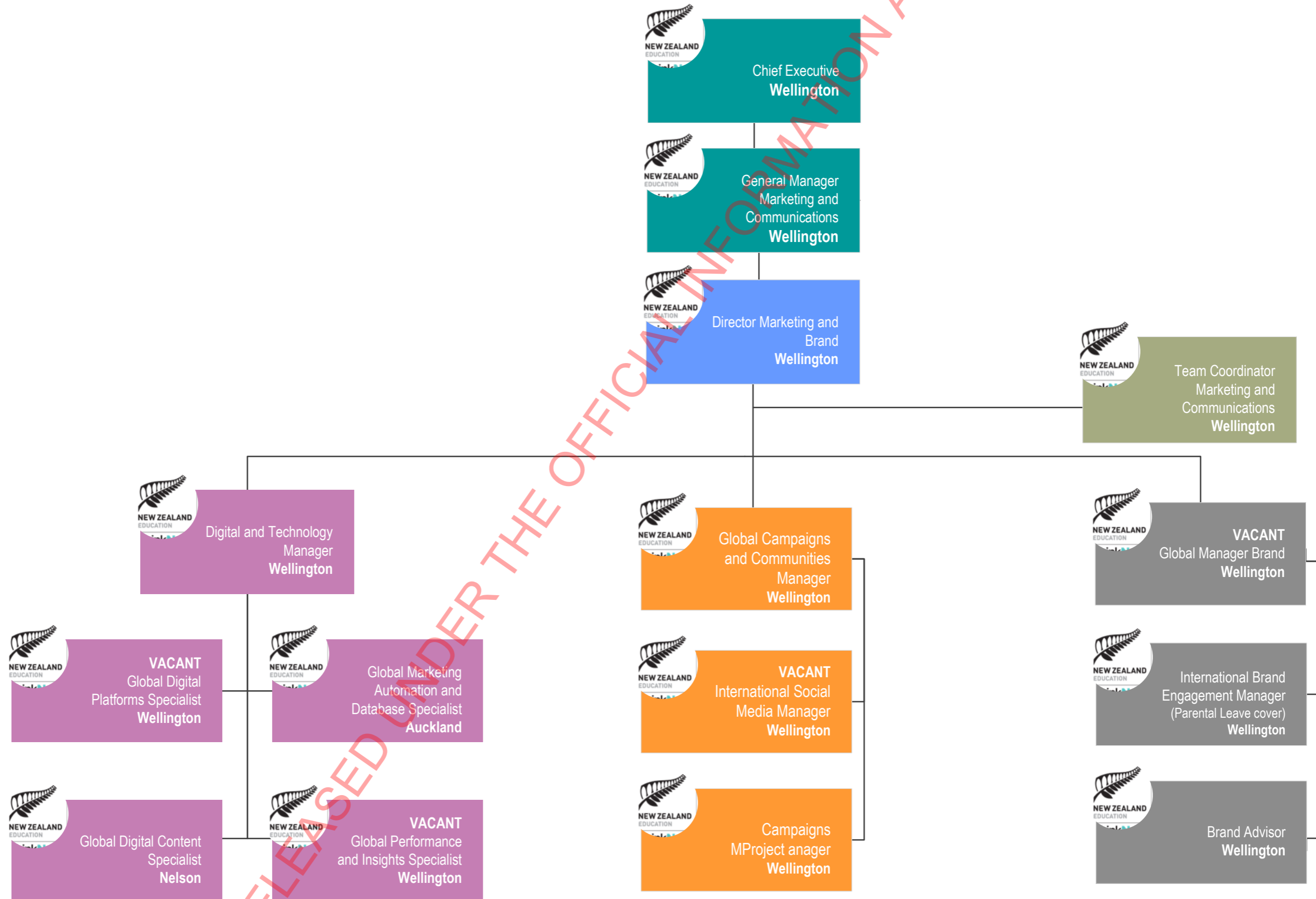


EDUCATION NEW ZEALAND MANAPOU KI TE AO ORGANISATION CHART

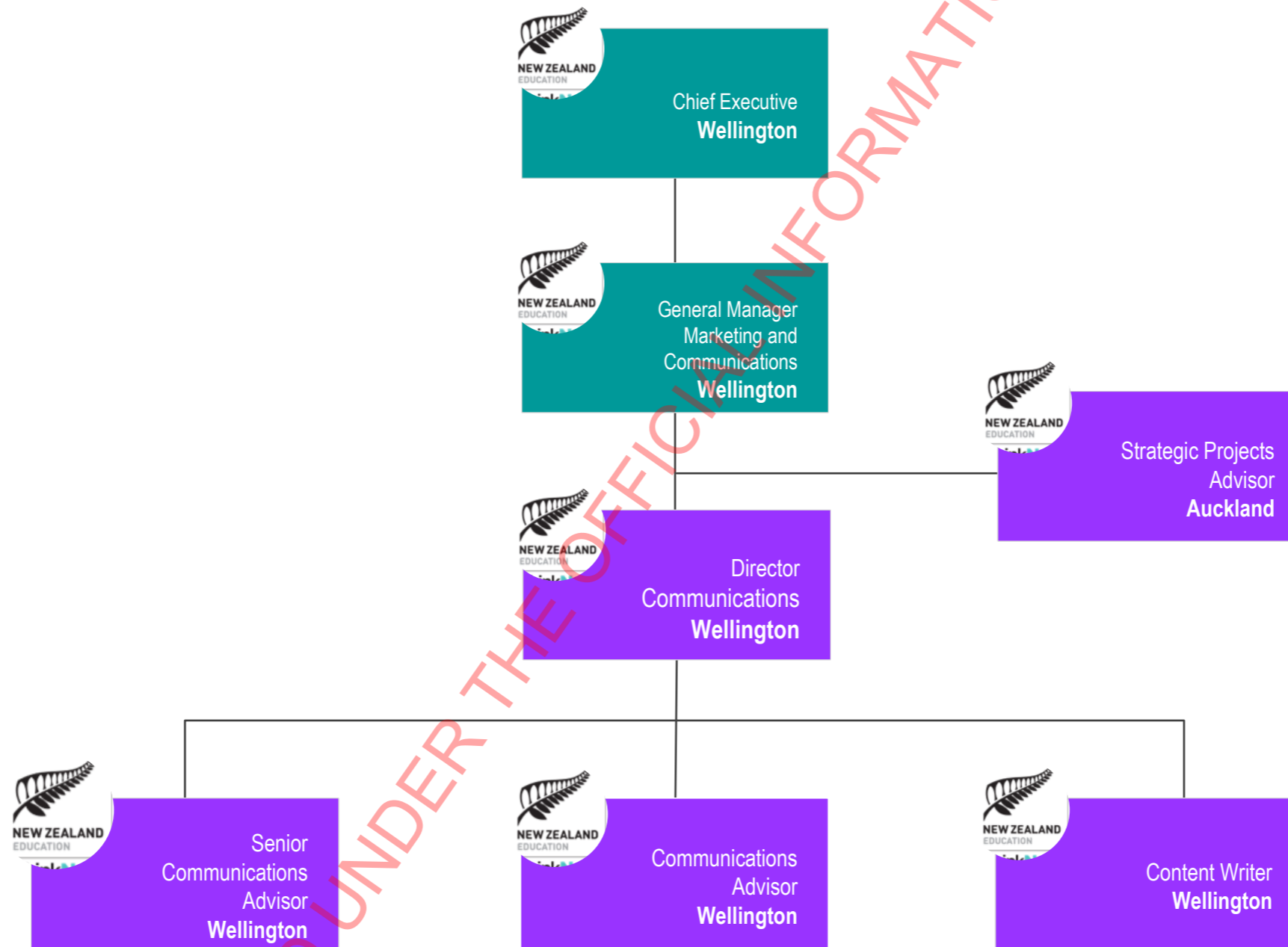
Sector Engagement



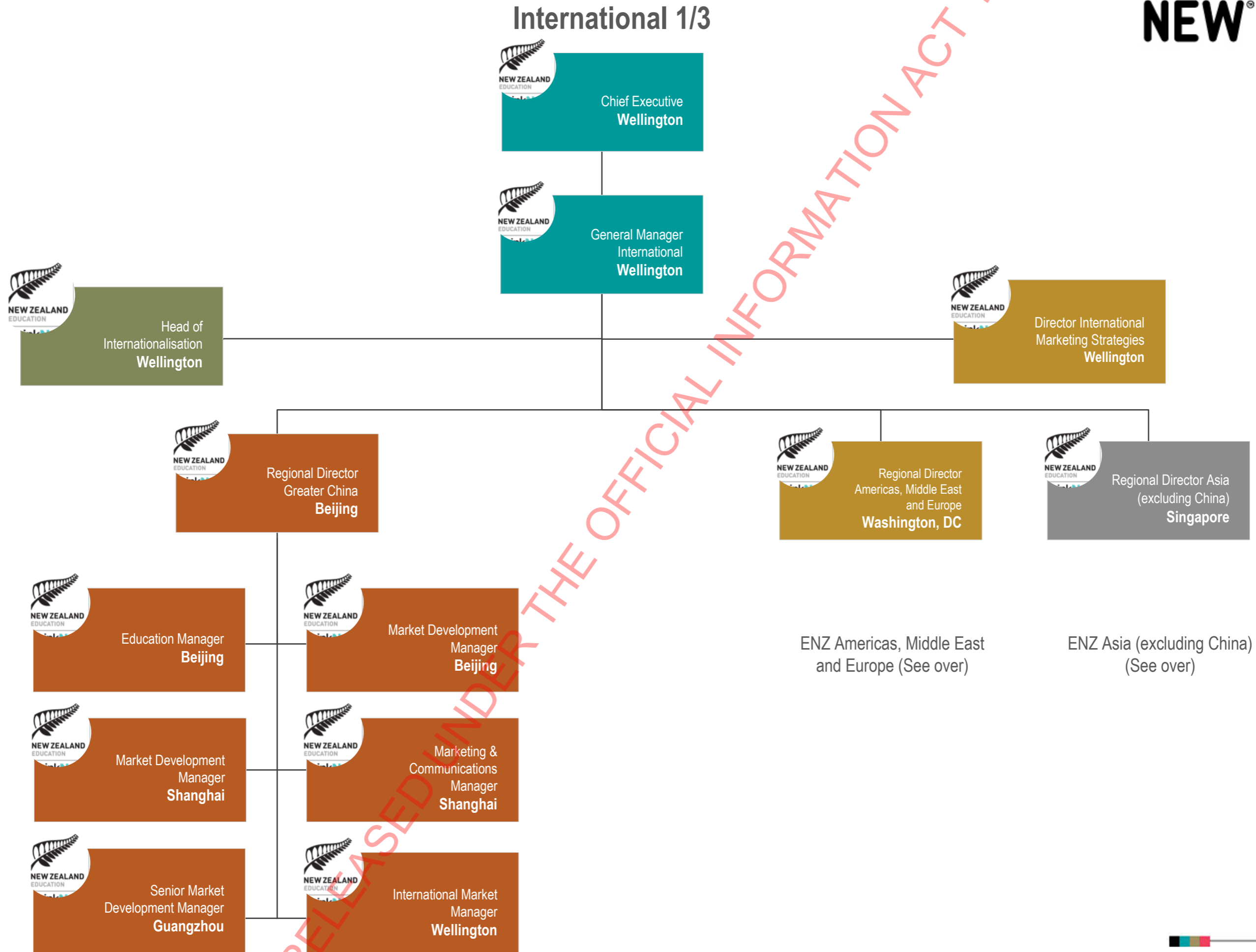
Marketing and Communications 1/2



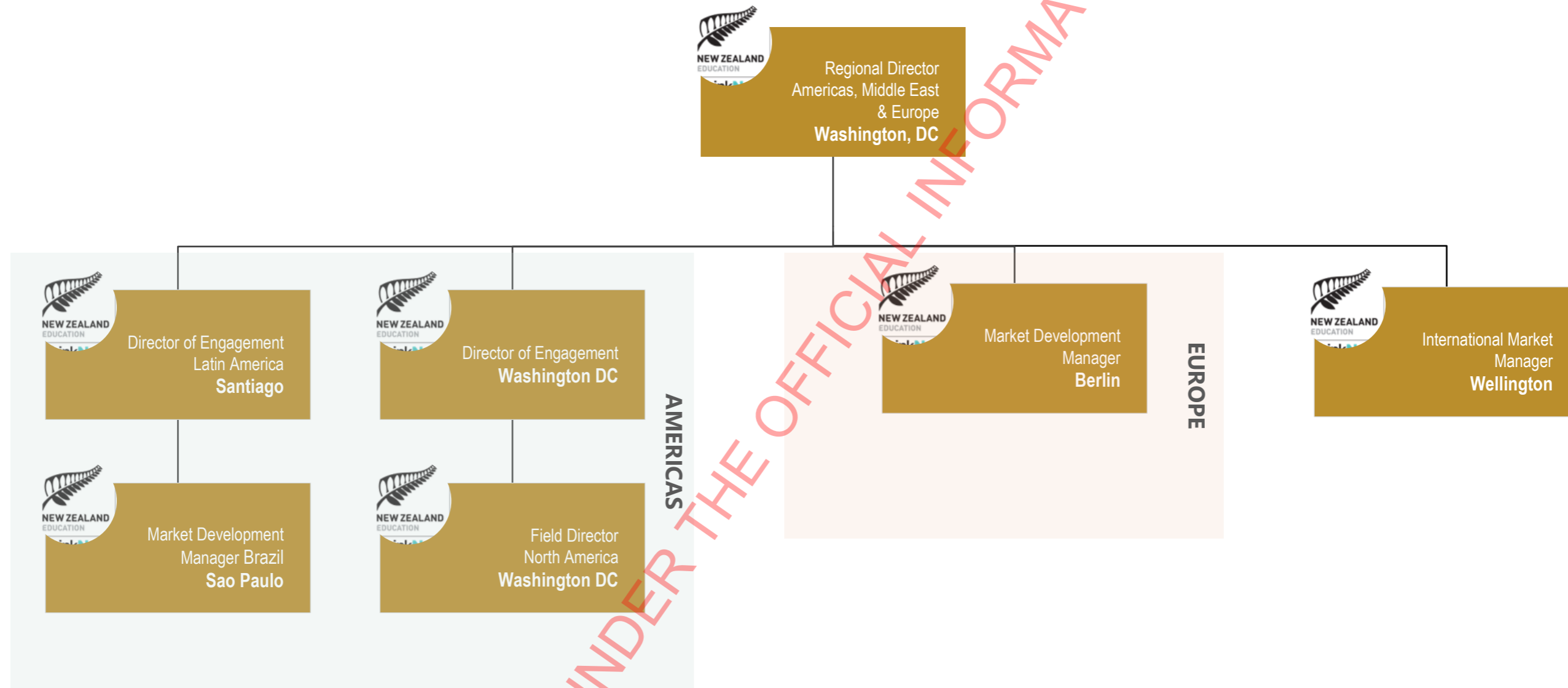
Marketing and Communications 2/2



EDUCATION NEW ZEALAND MANAPOU KI TE AO ORGANISATION CHART

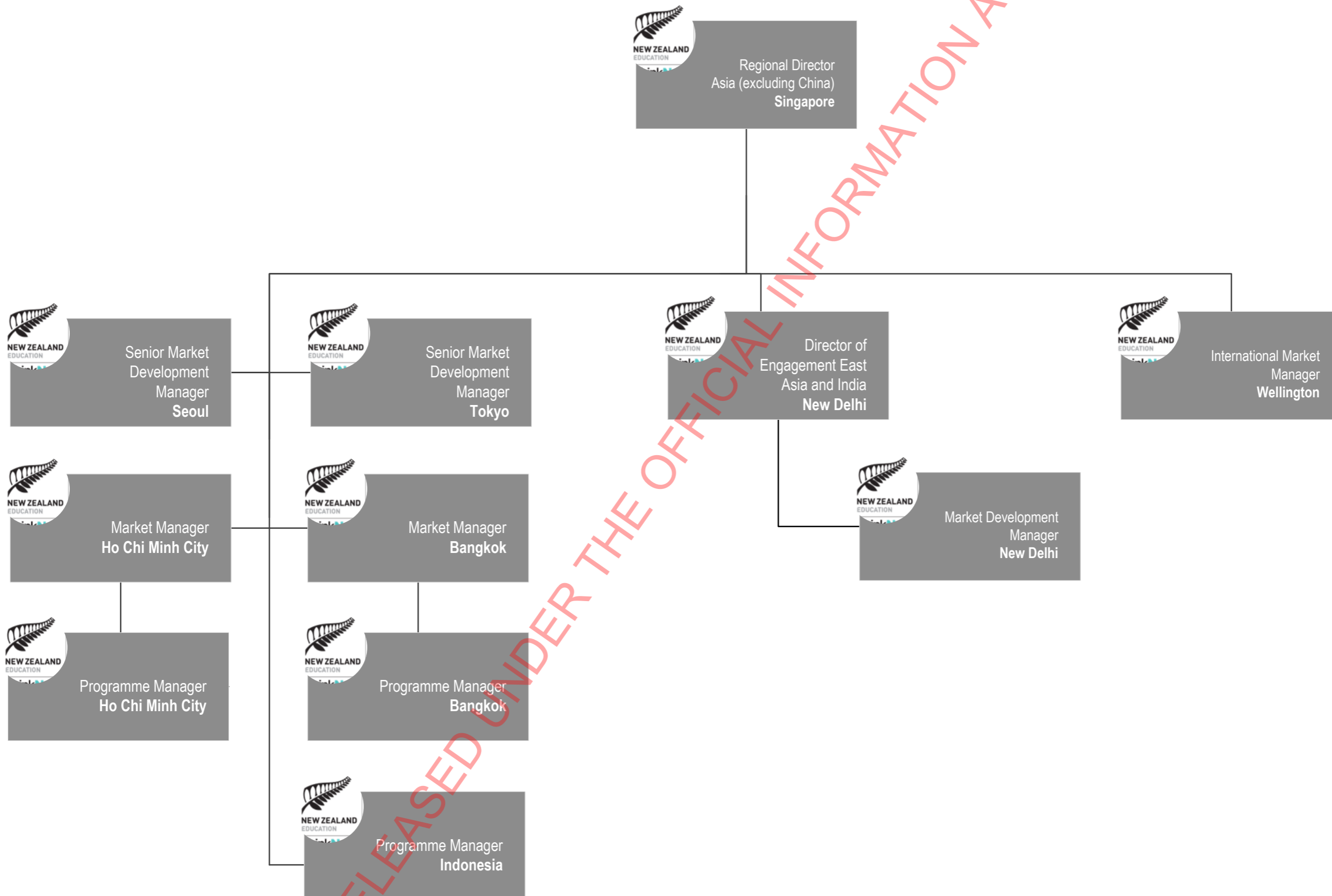


Americas, Middle East and Europe

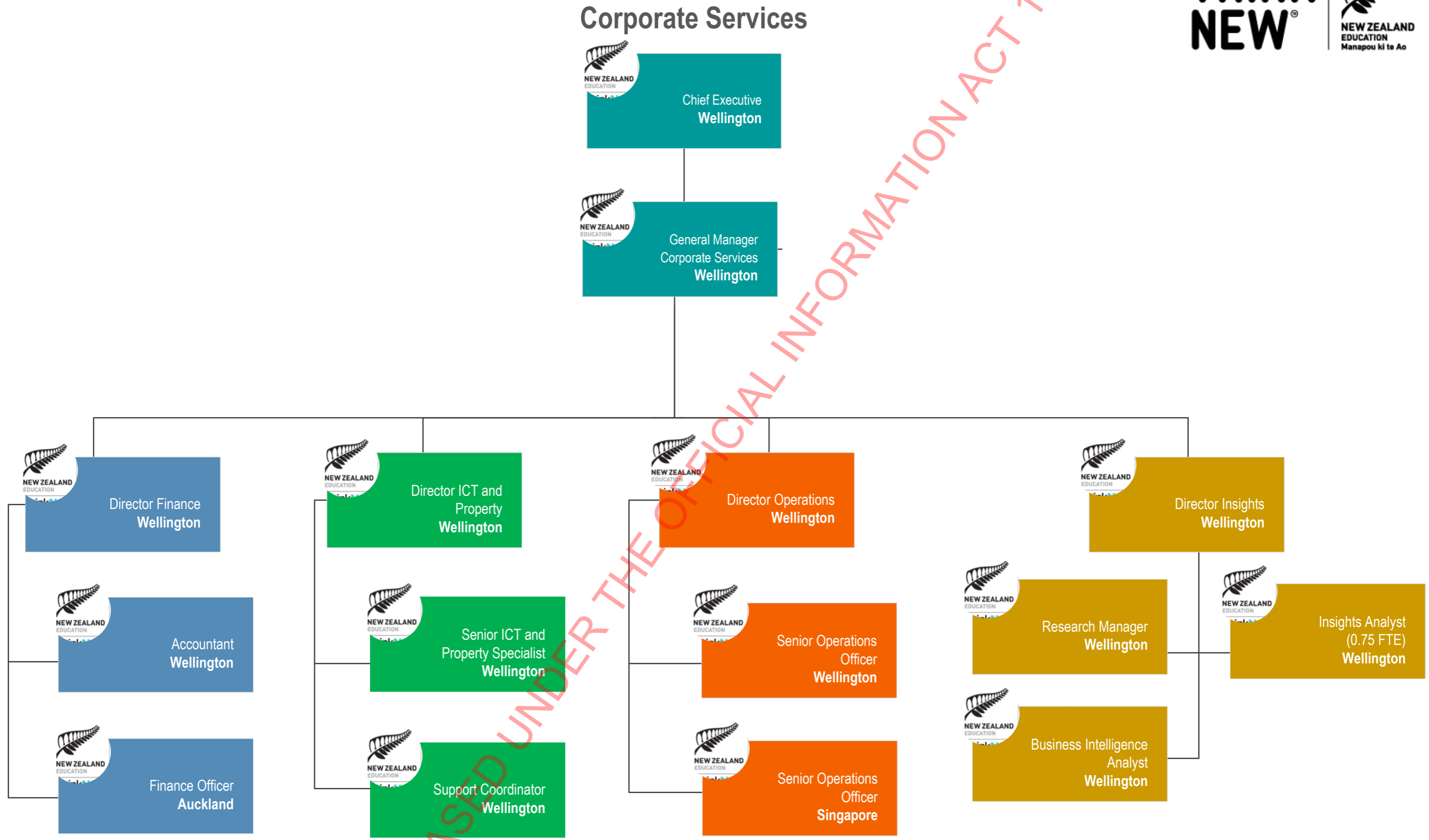


EDUCATION NEW ZEALAND MANAPOU KI TE AO ORGANISATION CHART

Asia (excluding China)

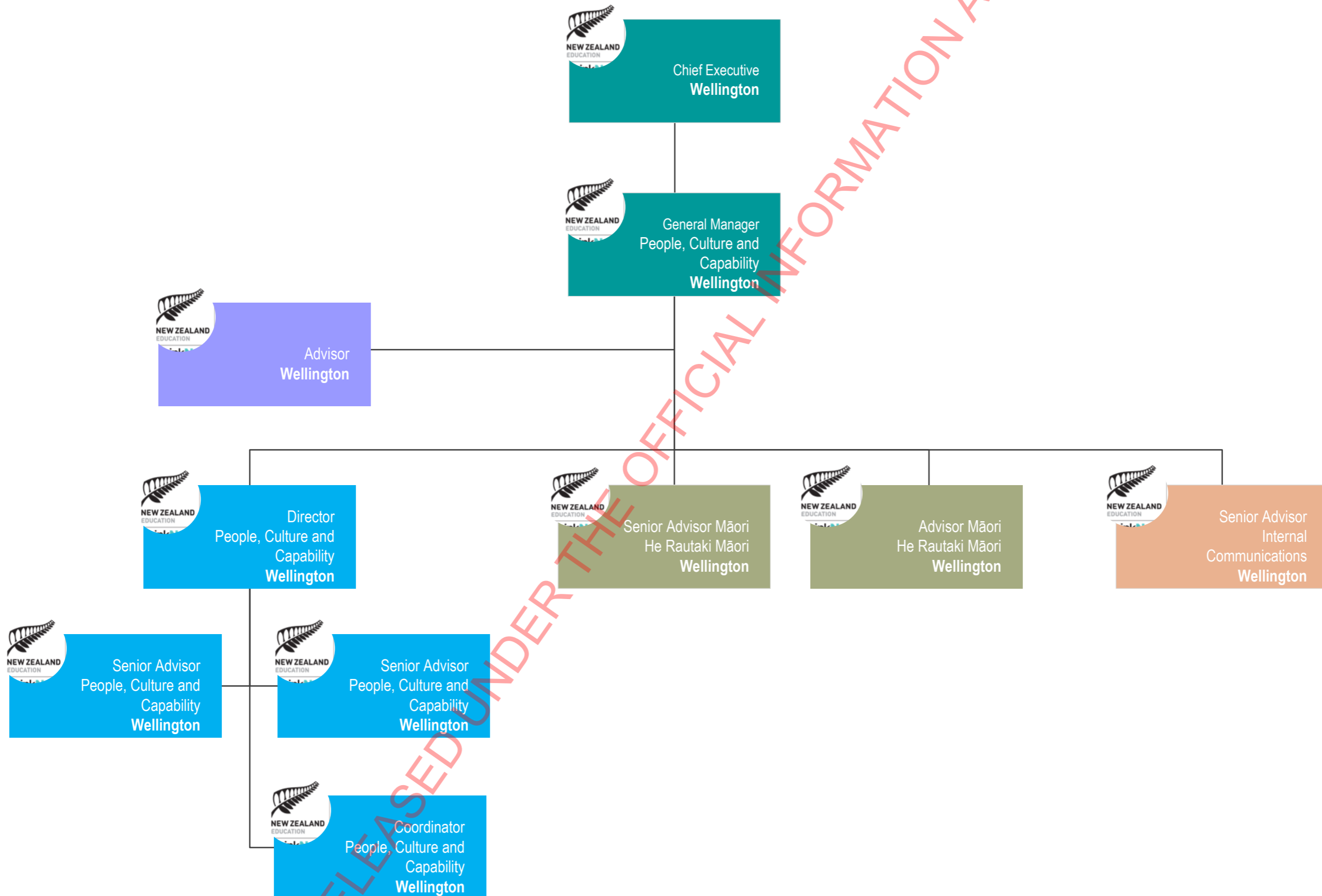


EDUCATION NEW ZEALAND MANAPOU KI TE AO ORGANISATION CHART



RELEASED UNDER THE OFFICIAL INFORMATION ACT 1982

People, Culture and Capability



New Zealand based roles

Salary band	Lower end	Upper end	Job Title
13	56,713	76,729	Communications Advisor, People Culture and Capability Coordinator, Support Coordinator, Finance Officer, Global Citizens Advisor, Advisor, Team Coordinator Marketing and Communications, Programme Coordinator Sector Engagement, Programme Coordinator Sector Services
14	64,648	87,464	Executive Assistant to the Chief Executive and Board
15	74,877	101,305	Senior ICT and Property Specialist, Senior Advisor Student Experience, Brand Advisor, Senior International Events Advisor, Global Social Media Specialist, Senior Advisor Global Citizens
16	89,077	120,515	Senior Advisor People Culture and Capability, International Brand Engagement Manager, Global Digital Content Specialist, Global Marketing Automation and Database Specialist, Advisor Māori, Senior Advisor Accountability, Manager Education Agents, Accountant, Campaigns Project Manager, Market Development Manager, Programme Manager, Market Manager, Education Manager, Field Director, Marketing and Communications Manager, Global Digital Platforms Specialist, Global Performance and Insights Specialist, Senior Communications Advisor, Senior Advisor Government Relations
17	104,978	142,028	Student Experience Manager, International Market Manager, Global Campaigns and Communities Manager, Insights Analyst, Strategic Projects Advisor, International Events Manager, Product Manager Growth and Development, Business Intelligence Analyst, Project Manager Study Centres, Global Citizens Manager, Senior Operations Officer, Senior Advisor Governance and Risk, Market Manager, Director of Engagement, Senior Market Development Manager, Global Brand Manager, Pilot Programme Manager
18	124,968	169,074	Head of Internationalisation, Senior Advisor Internal Communications, Programme Wide Project Manager, Engagement Manager, Director International Marketing Strategies, Accountability Manager, Business Development Manager, Strategic Project Manager, Digital and Technology Manager, Strategic Advisor, Senior Advisor Māori, Research Manager, Growth and Innovation Lead
19	148,149	200,437	Director Communications, Director Insights, Director People Culture and Capability, Regional Director China, Director Finance, Manager Government Advisory, Director ICT and Property, Regional Director Americas, Middle East and Europe, Director Sector Engagement, Director Marketing and Brand, Director Innovation and Growth, Director Operations, Director Sector Services
20	173,023	234,089	General Manager, Regional Director Asia (excluding China), Manukura-Chief Advisor Māori
21	210,867	285,291	General Managers
22	234,502	317,268	General Managers