

Register of Permanent Mobile Food Stall Sites

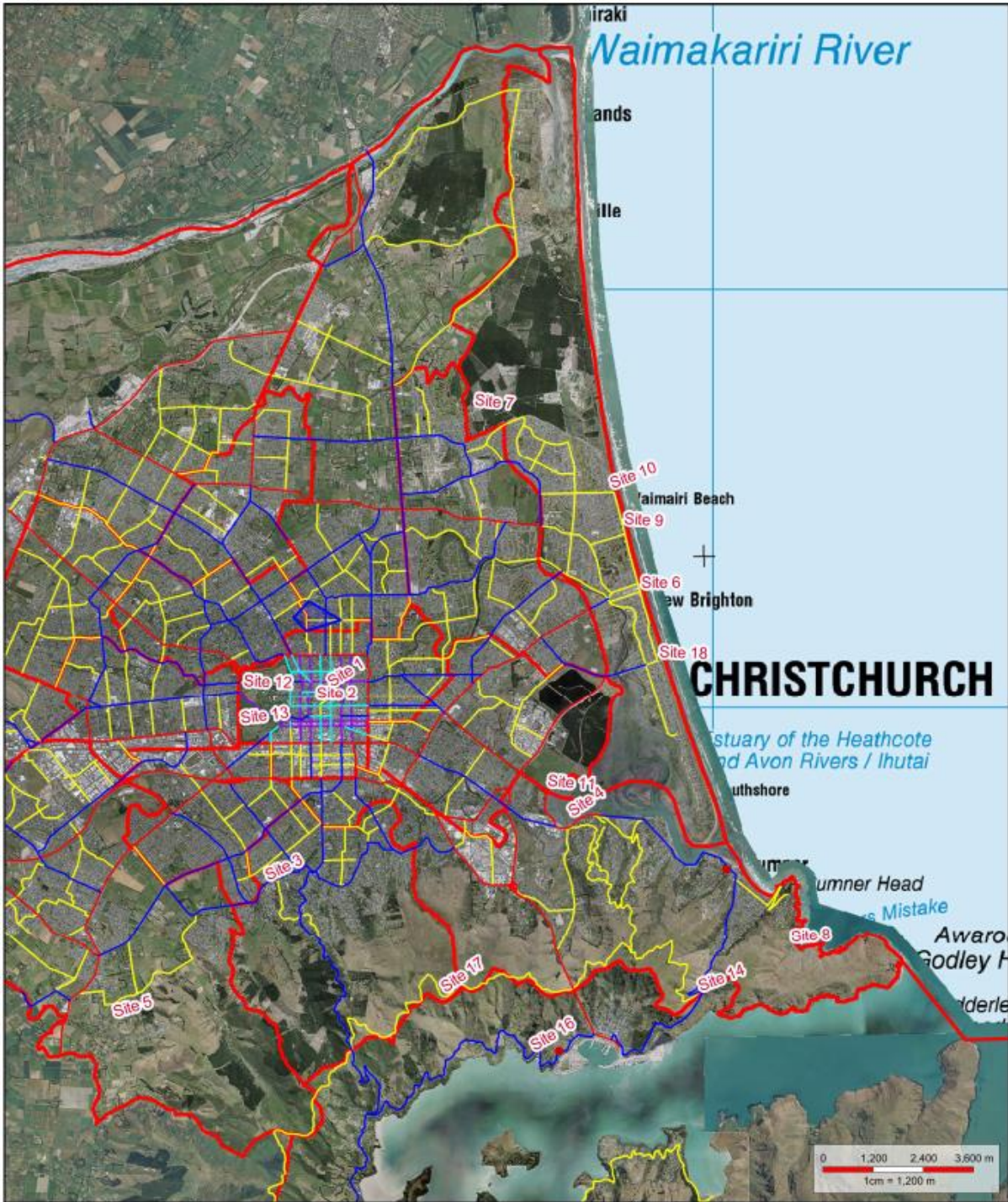
Permanent sites for mobile food stalls are provided for in the following designated areas. These sites are allocated through a tender process.

If any vendor wants to establish a produce stall at any site, the Council may give preference to vendors who grow their own produce.

Applications for permanent trading sites along Worcester Boulevard or along the banks of the Avon River will not be considered.

The Sites

- 1 Margaret Mahy Family Play Ground
- 2 Cathedral Square
 - a. 7 days per week sites
 - b. Friday Street Food Market
- 3 Cashmere Road
- 4 Scott Park
- 5 Halswell Quarry Park
- 6 New Brighton – south ramp car park
- 7 Bottle Lake Forest
- 8 Taylors Mistake
- 9 North Beach
- 10 Broad Park
- 11 Humphreys Drive
- 12 North Hagley
- 13 South Hagley
- 14 Evans Pass
- 15 Akaroa
 - a. Weighbridge site
 - b. Domain site
- 16 Corsair Bay
- 17 Summit Road at Rapaki Track
- 18 South New Brighton Park
- 19 South Brighton Surf Club




 1:120,000 on A4
 Mar 23, 2018 12:14:39 PM

Christchurch City Council


ph: 941-8300 fax: 941-8385

Accuracy not guaranteed. Onsite verification required. Display of data scale dependent, full detail available at 1:500. Client Selected Legend.

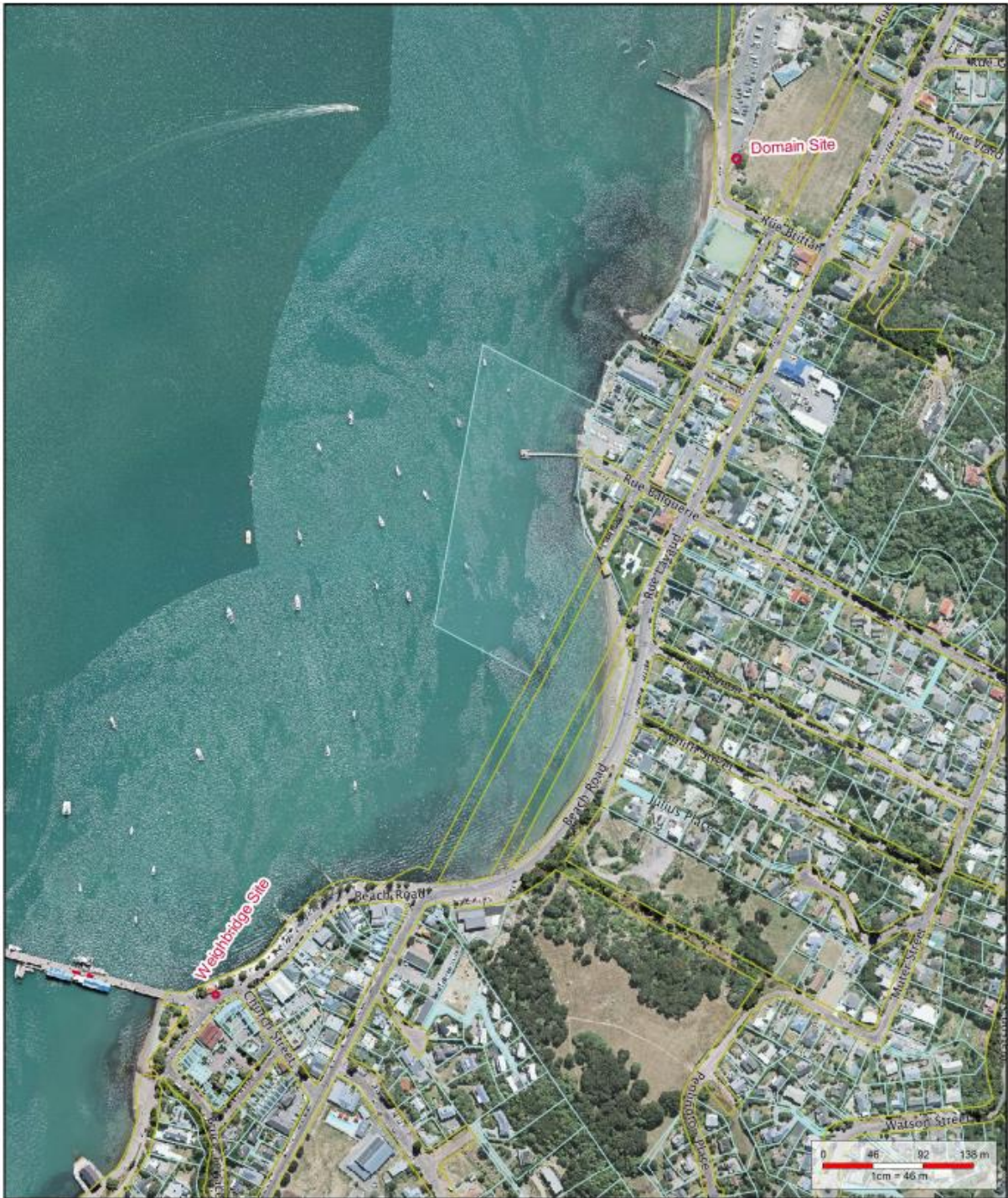
Copyright © 2013. Reproduction prohibited

Landbase
 ✓ Road Hierarchy Overview
 ✓ Central City Local Distributor
 ✓ Central City Main Distributor
 ✓ Collector
 ✓ Major Arterial
 ✓ Minor Arterial
 ✓ Motorway
 ✓ Ward

Aerial Photo 2016
 ✓ Aerial Photo 2016 CC 5
 ✓ Aerial Photo 2016 BP 6
 ✓ Aerial Photo 2016 4

Topo
 ✓ Topo 250 (2014)
 WorkingLevel per tool
 Rodline

Site Locations - City Wide



1 : 4,600 on A4
Mar 23, 2018 12:53:03 PM



ph: 941-8300 fax: 941-8385

Accuracy not guaranteed. Onsite verification required. Display of data scale dependent, full detail available at 1:500. Client Selected Legends.

Copyright © 2013. Reproduction prohibited.

Landbase

- Road Name
- Road Boundary
- Rating Unit
- Rating Unit (Fill)
- Rating Unit (No Fill)
- Rating Unit (No Fill)

Aerial Photo 2016

- Aerial Photo 2016 CC 5
- Aerial Photo 2016 BP 6
- Aerial Photo 2016 4

WorkingLevel per tool

- Redline

Site Locations - Akaroa

1- Margaret Mahy Family Play Ground

Location	Cnr Armagh & Manchester Streets
# of sites available	4
Term	5 years
Commencement Date	1 July 2018
<p>The playground features a unique mix of playground equipment, interactive spaces, gardens, artwork, water features, recreational and picnic areas and public facilities to be used and enjoyed by children and adults alike.</p> <p>Operators are permitted to leave their vehicle on site overnight (at their own risk) providing they intend to trade from the site the next day, otherwise, vehicles must be removed. Council will provide access to electricity for these sites. Reasonable usage of power is included in the Licence Fee, the Council reserves the right to charge for excess use of power.</p>	




 1 : 558 on A4
 Mar 27, 2018 10:29:26 AM

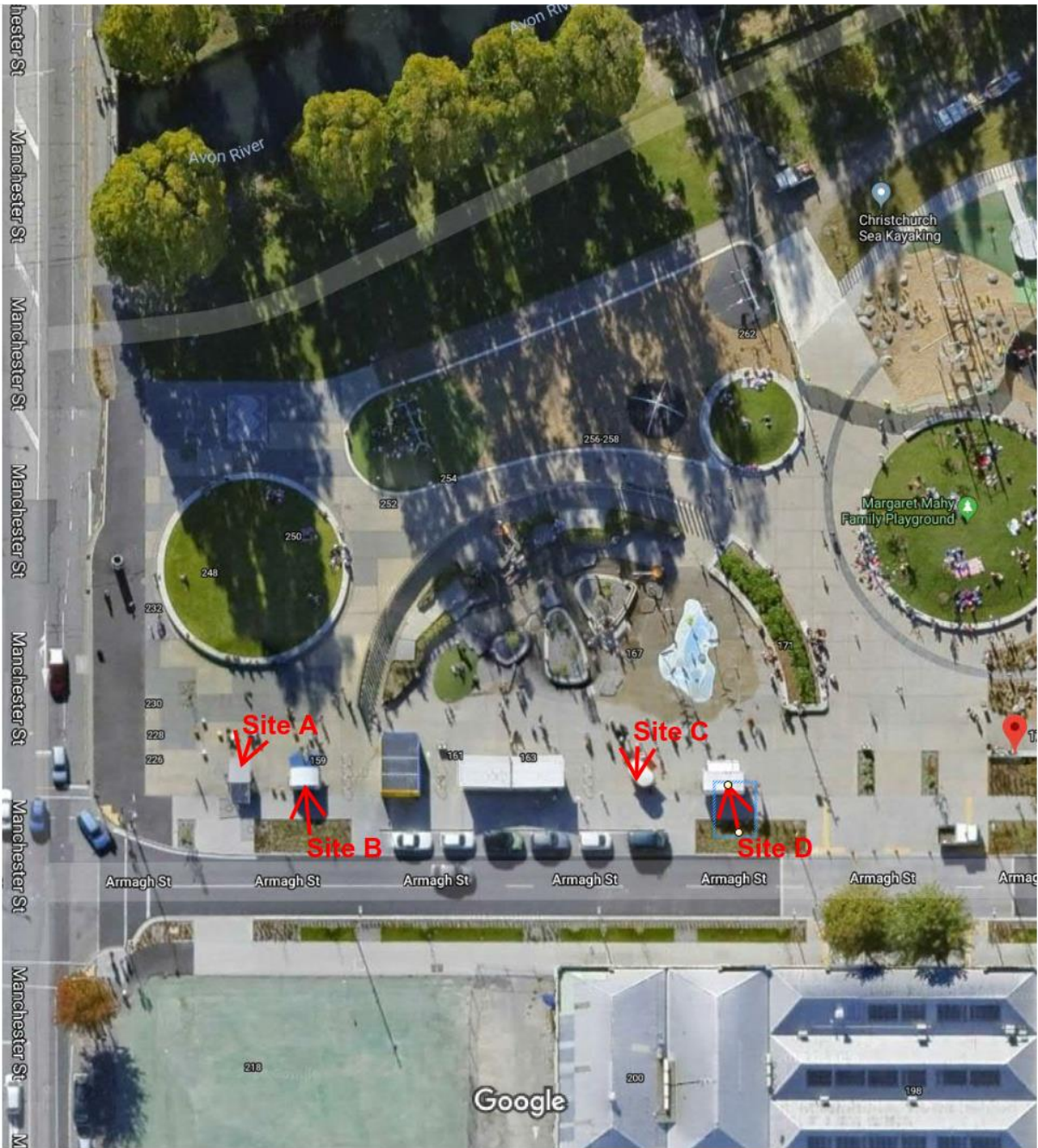
Christchurch City Council
 ph: 941-8300 fax: 941-8385

Accuracy not guaranteed. Onsite verification required. Display of data scale dependent, full detail available at 1:500. Client Selected Legend.

Copyright © 2013 Reproduction prohibited

- Landbase**
- Street Number
 - Legal Description
 - Road Name
 - Road Boundary
 - Rating Unit
 - Rating Unit (Fill)
 - Rating Unit (No Fill)
- Aerial Photo 2016**
- Aerial Photo 2016 CC 5
 - Aerial Photo 2016 BP 6
 - Aerial Photo 2016 4
- WorkingLevel per tool**
- Redline

1- Margaret Mahy Family Play Ground Armagh Street



Map data ©2018 Google, MapData Sciences Pty Ltd, PSMA 10 m

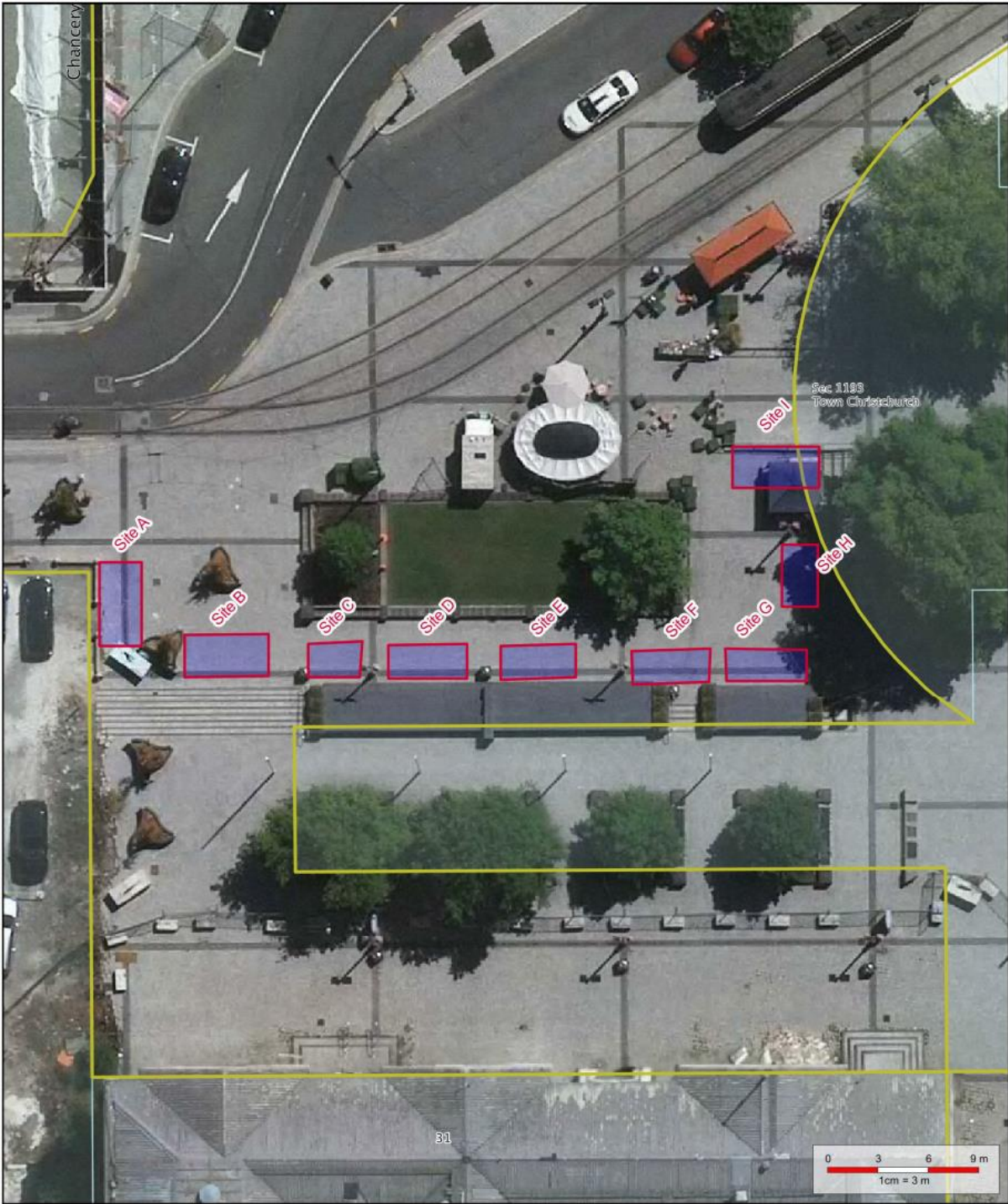
2 -a- Cathedral Square – 7 days per week sites

Location	Cathedral Square (refer to site map)
# of sites available	Up to 8
Term	5 years Unless determined earlier because of construction requirements of the Square re-development
Commencement Date	1 July 2018

Mobile food outlets in the Square have been a well patronised attraction for many years. A dedicated area by the Tram stop has been set aside to provide food and beverage through mobile Food Trucks or Trailers.

Operators are permitted to leave their vehicle on site overnight (at their own risk) providing they intend to trade from the site the next day, otherwise, vehicles must be removed. Operators are permitted to bring a vehicle on-site for the delivery of supplies only. No vehicle movements are permitted between 11:00am and 3:00pm. On Fridays, there will be no vehicle movements between 4:00pm and the close of service for the Friday Street Food Market.

The Council will provide access to electricity for these sites. Reasonable usage of power is included in the Licence Fee, the Council reserves the right to charge for excess use of power.



1 : 300 on A4
Mar 27, 2018 10:48:37 AM

Christchurch City Council
ph: 941-8300 fax: 941-8385

Accuracy not guaranteed. Onsite verification required. Display of data scale dependent. Full detail available at 1:500. Client Selected Legend.

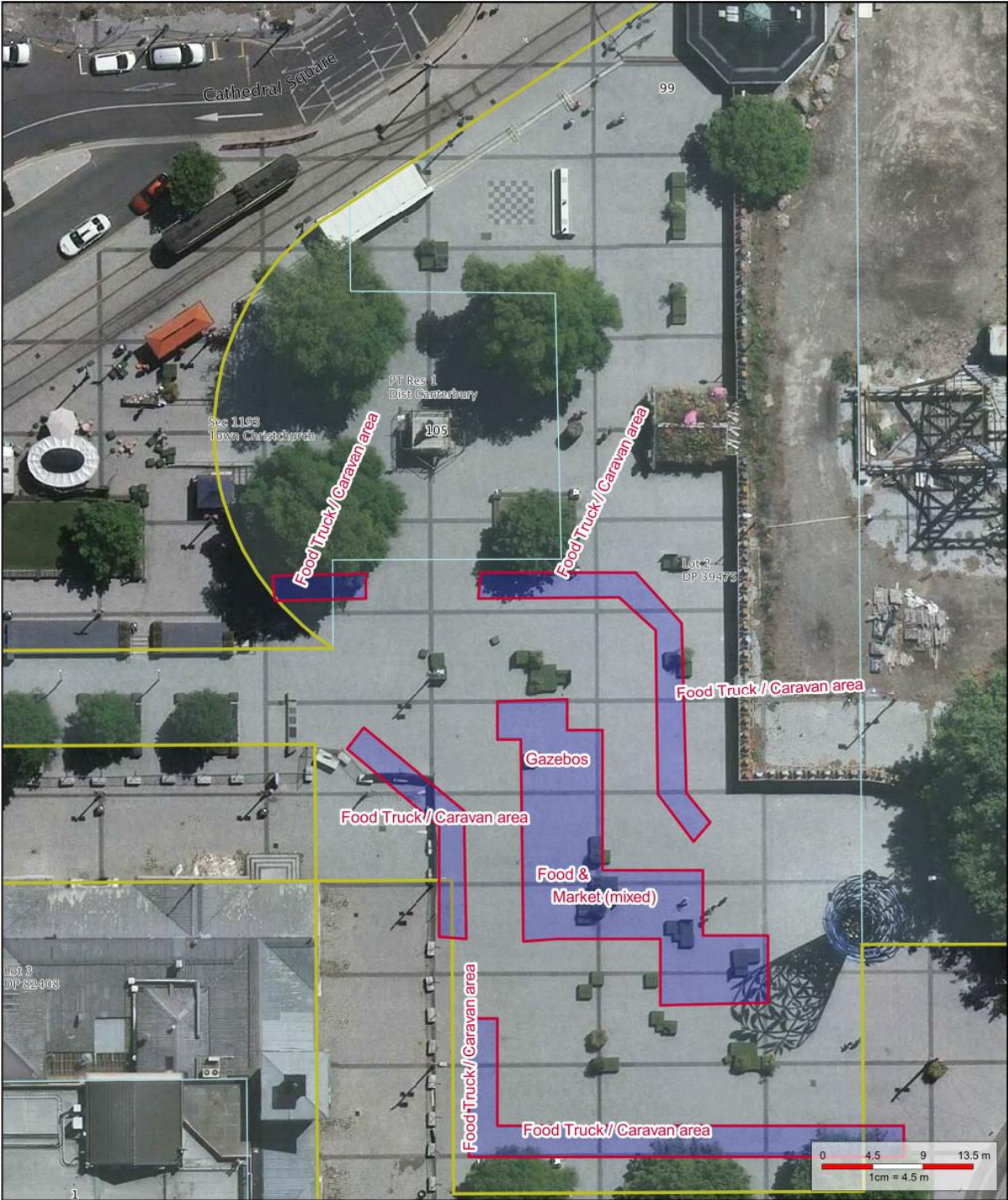
Copyright © 2013 Reproduction prohibited

- Landbase**
- Street Number
 - Legal Description
 - Road Name
 - Road Boundary
 - Rating Unit
 - Rating Unit (Fill)
 - Rating Unit (No Fill)
- Aerial Photo 2016**
- Aerial Photo 2016 CC 5
 - Aerial Photo 2016 BP 6
 - Aerial Photo 2016 4
- WorkingLevel per tool**
- Redline

**2-a-Cathedral Square
Sites for 7 day per week operation**

2b- Cathedral Square – Friday Street Food Market

Location	Cathedral Square (refer to site map)
# of sites available	Up to 25
Term	5 years - Unless determined earlier because of construction requirements of the Square re-development
Commencement Date	1 July 2018
<p>Mobile food outlets in the Square have been a well patronised attraction for many years. In recent years the Friday Street Food Market has evolved into an all-day affair, extending into the evening.</p> <p>Operators are permitted to bring a tow vehicle on-site for the delivery of the caravan and equipment only. No vehicle movements are permitted between 11:00am and 3:00pm and 4:00pm and the close of service for the Friday Street Food Market. The Council can provide access to electricity for a large number of these sites. The Council will charge for a contribution to the cost of power used.</p> <p>The Council will allocate positions within each of the areas each Friday night.</p>	




 1 : 450 on A4
 Mar 27, 2018 12:25:10 PM



 ph: 941-8300 fax: 941-8385

Accuracy not guaranteed. Onsite verification required. Display of data scale dependent, full detail available at 1:500. Client Selected Legend.

Copyright © 2013 Reproduction prohibited

- Landbase**
- Street Number
 - Legal Description
 - Road Name
 - Road Boundary
 - Rating Unit
 - Rating Unit (Fill)
 - Rating Unit (No Fill)
- Aerial Photo 2016**
-  Aerial Photo 2016 CC 5
 -  Aerial Photo 2016 BP 6
 -  Aerial Photo 2016 4
- WorkingLevel per tool**
-  Redline

**2-b-Cathedral Square
Friday Street Food Market**

3-Cashmere Road

Location	Cashmere Road (refer to site map)
# of sites available	6
Term	5 years
Commencement Date	1 July 2018
<p>Cashmere Road has become a popular place for mobile traders.</p> <p>Vendors must be self-sufficient on these sites as there are no services provided by Council.</p> <p>Vendors must remove their vehicles each night, overnight parking is not permitted.</p>	




1 : 800 on A4
 Mar 27, 2018 4:45:21 PM



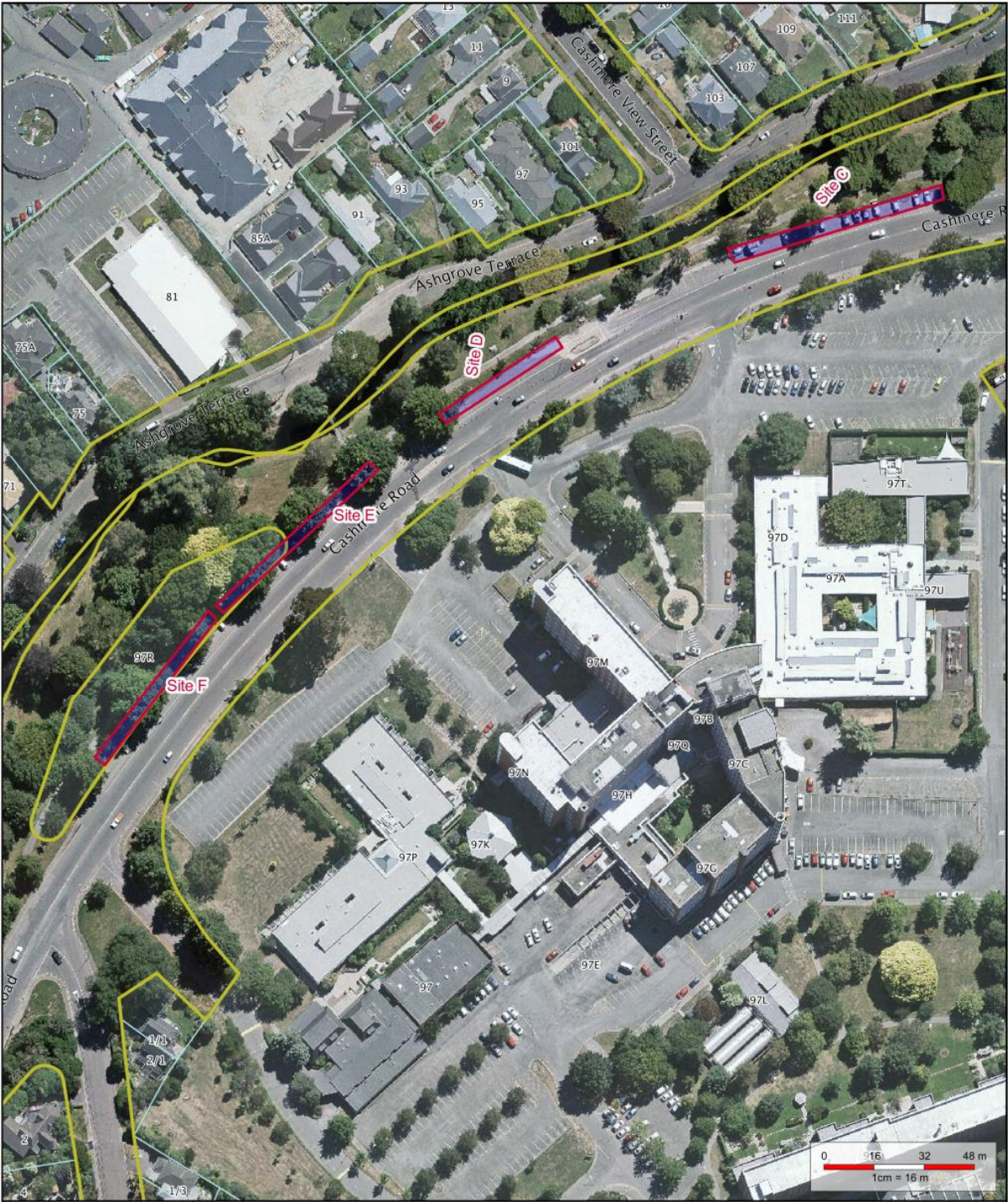
 ph: 941-8300 fax: 941-8385

Accuracy not guaranteed. Onsite verification required. Display of data scale dependent, full detail available at 1:500. Client Selected Legend.

Copyright © 2013 Reproduction prohibited

- Landbase**
- Street Number
 - Legal Description
 - Road Name
 - Road Boundary
 - Rating Unit
 - Rating Unit (Fill)
 - Rating Unit (No Fill)
- Aerial Photo 2016**
- Aerial Photo 2016 CC 5
 - Aerial Photo 2016 BP 6
 - Aerial Photo 2016 4
- WorkingLevel per tool**
- Redline

3-Cashmere Road Sites A&B




1 : 1,600 on A4
 Mar 27, 2018 4:53:55 PM



 ph: 941-8300 fax: 941-8385

Accuracy not guaranteed. Onsite verification required. Display of data scale dependent, full detail available at 1:500. Client Selected Legend.

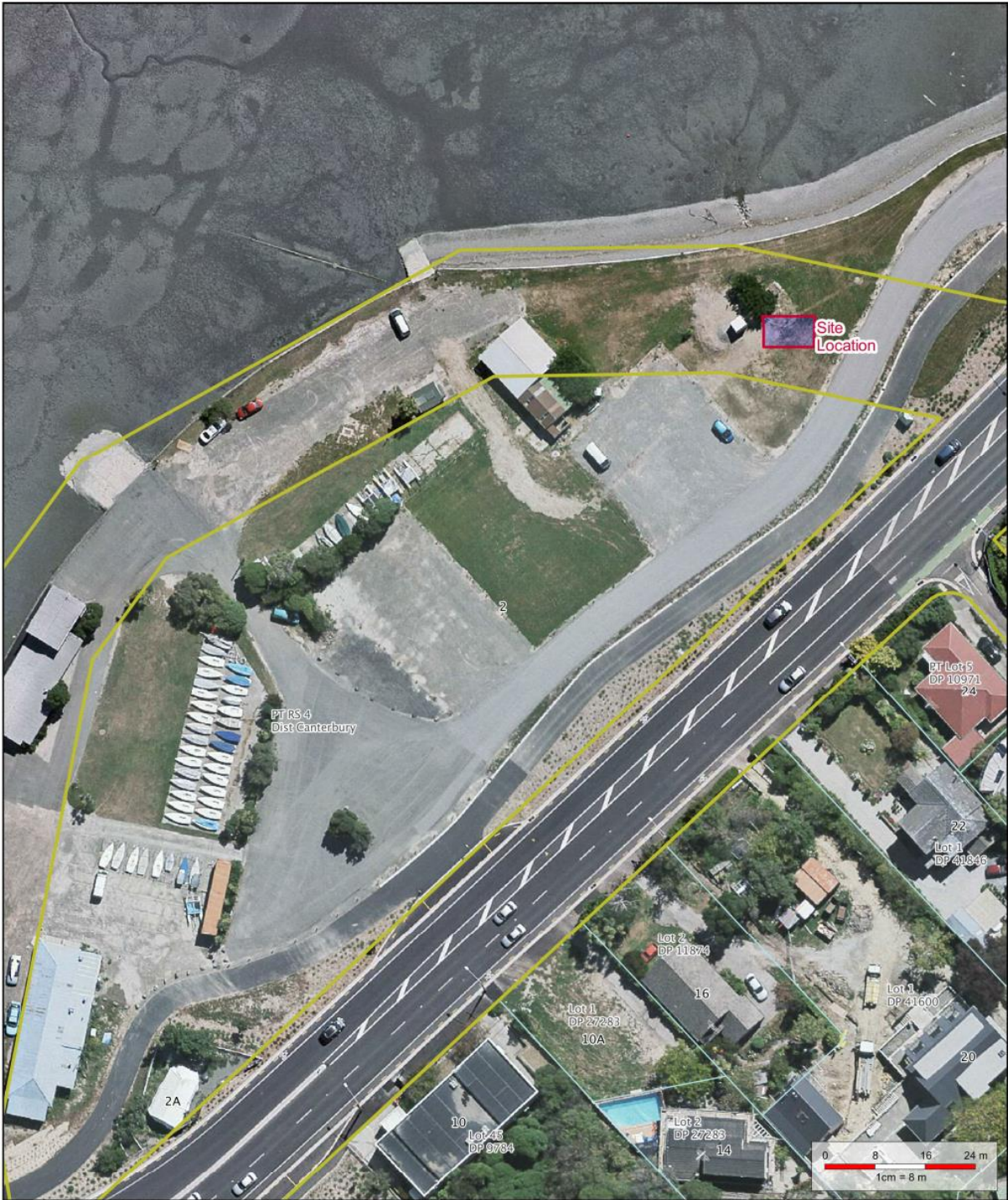
Copyright © 2013 Reproduction prohibited

- Landbase**
- Street Number
 - Road Name
 - Road Boundary
 - Rating Unit
 - Rating Unit (Fill)
 - Rating Unit (No Fill)
 - Rating Unit (No Fill)
- Aerial Photo 2016**
- Aerial Photo 2016 CC 5
 - Aerial Photo 2016 BP 6
 - Aerial Photo 2016 4
- WorkingLevel per tool**
- Redline

3-Cashmere Road Sites - C, D, E & F

4-Scott Park

Location	Main Road (close to Mt Pleasant Yacht Club)
# of sites available	1
Term	5 years
Commencement Date	1 July 2018
<p>Scott Park is an attractive site with views of the Estuary & the activities undertaken thereon.</p> <p>Vendors must be self-sufficient on these sites as there are no services provided by Council.</p> <p>Vendors must remove their vehicles each night, overnight parking is not permitted.</p>	



1 : 800 on A4
Mar 27, 2018 5:01:37 PM



ph: 941-8300 fax: 941-8385

Accuracy not guaranteed. Onsite verification required. Display of data scale dependent, full detail available at 1:500. Client Selected Legend.

Copyright © 2013 Reproduction prohibited

Landbase

- Street Number
- Legal Description
- Road Name
- Road Boundary
- Rating Unit
- Rating Unit (Fill)
- Rating Unit (No Fill)

- Aerial Photo 2016**
- Aerial Photo 2016 CC 5
 - Aerial Photo 2016 BP 6
 - Aerial Photo 2016 4

- WorkingLevel per tool**
- Redline

**4-Scott Park
Main Road, Mt Pleasant**

5-Halswell Quarry Park

Location	Halswell Quarry Park – Kennedys Bush Road
# of sites available	1
Term	5 years
Commencement Date	1 July 2018
<p>Halswell Quarry Park is an attractive site with walking tracks and other activities.</p> <p>Vendors must be self-sufficient on this site as there are no services provided by Council. The vendor must remove their vehicles each night, overnight parking is not permitted on this site.</p>	





1 : 1,750 on A4
 Mar 28, 2018 8:22:03 AM

Christchurch City Council


ph: 941-8300 fax: 941-8385

Accuracy not guaranteed. Onsite verification required. Display of data scale dependent, full detail available at 1:500. Client Selected Legend.

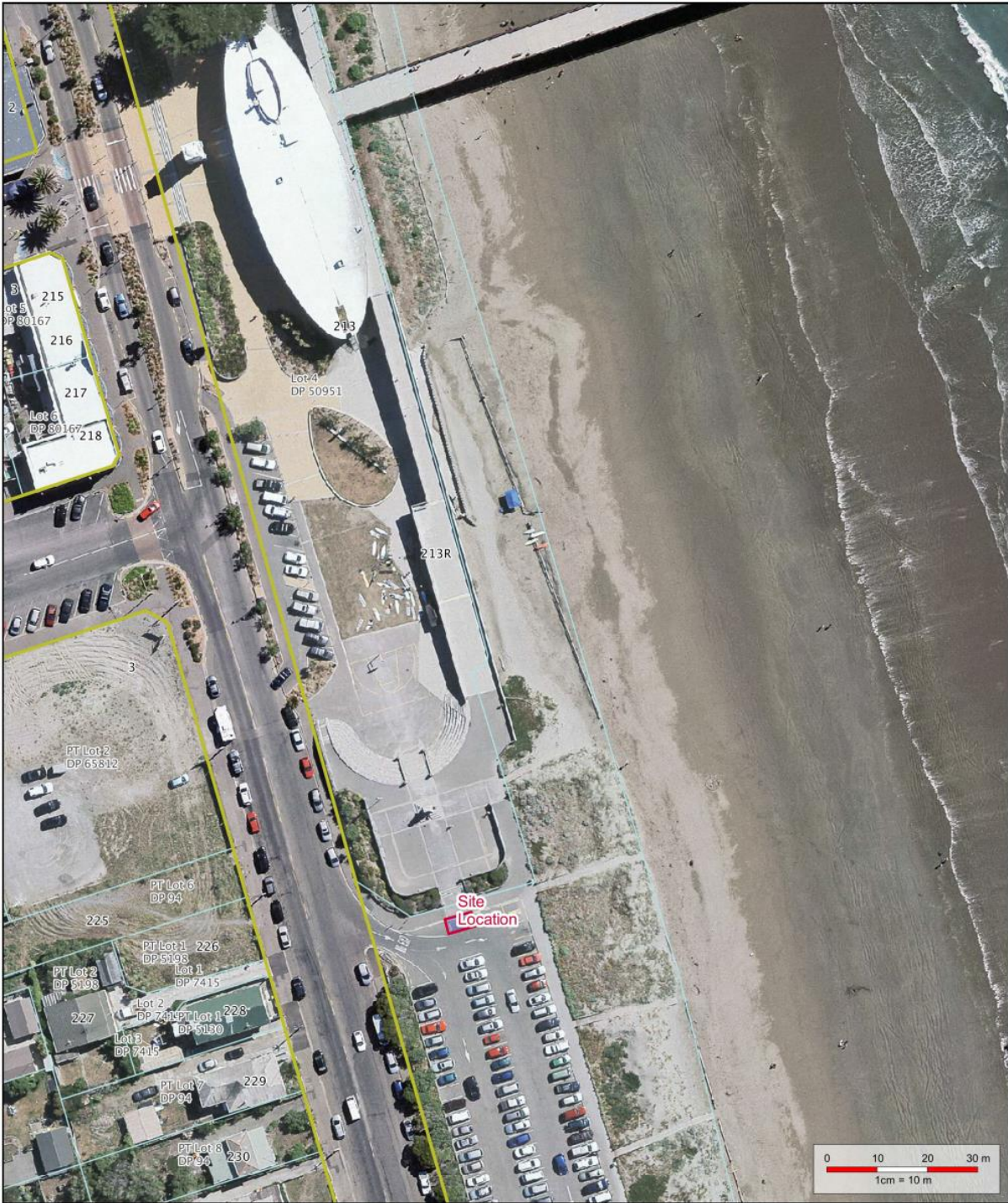
Copyright © 2013 Reproduction prohibited

- Landbase**
- Street Number
 - Road Name
 - Road Boundary
 - Rating Unit
 - Rating Unit (Fill)
 - Rating Unit (No Fill)
- Aerial Photo 2016**
-  Aerial Photo 2016 CC 5
 -  Aerial Photo 2016 BP 6
 -  Aerial Photo 2016 4
- WorkingLevel per tool**
-  Redline

5-Halswell Quarry Park
Site - beside Singleman's Cottage
entrance off Kennedys Bush Road

6- New Brighton – south ramp car park

Location	Marine Parade, New Brighton (opposite 228 Marine Parade)
# of sites available	1
Term	5 years
Commencement Date	1 July 2018
<p>The New Brighton south ramp car park is situated to the south of the New Brighton Library and Pier.</p> <p>Vendors must be self-sufficient on this site as there are no services provided by Council. The vendor must remove their vehicles each night, overnight parking is not permitted on this site.</p>	



1 : 1,000 on A4
Mar 28, 2018 8:54:40 AM



ph: 941-8300 fax: 941-8385

Accuracy not guaranteed. Onsite verification required. Display of data scale dependent, full detail available at 1:500. Client Selected Legend.

Copyright © 2013 Reproduction prohibited

Landbase

- Street Number
- Legal Description
- Road Name
- Road Boundary
- Rating Unit
- Rating Unit (Fill)
- Rating Unit (No Fill)
- Rating Unit (No Fill)

Aerial Photo 2016

- Aerial Photo 2016 CC 5
- Aerial Photo 2016 BP 6
- Aerial Photo 2016 4

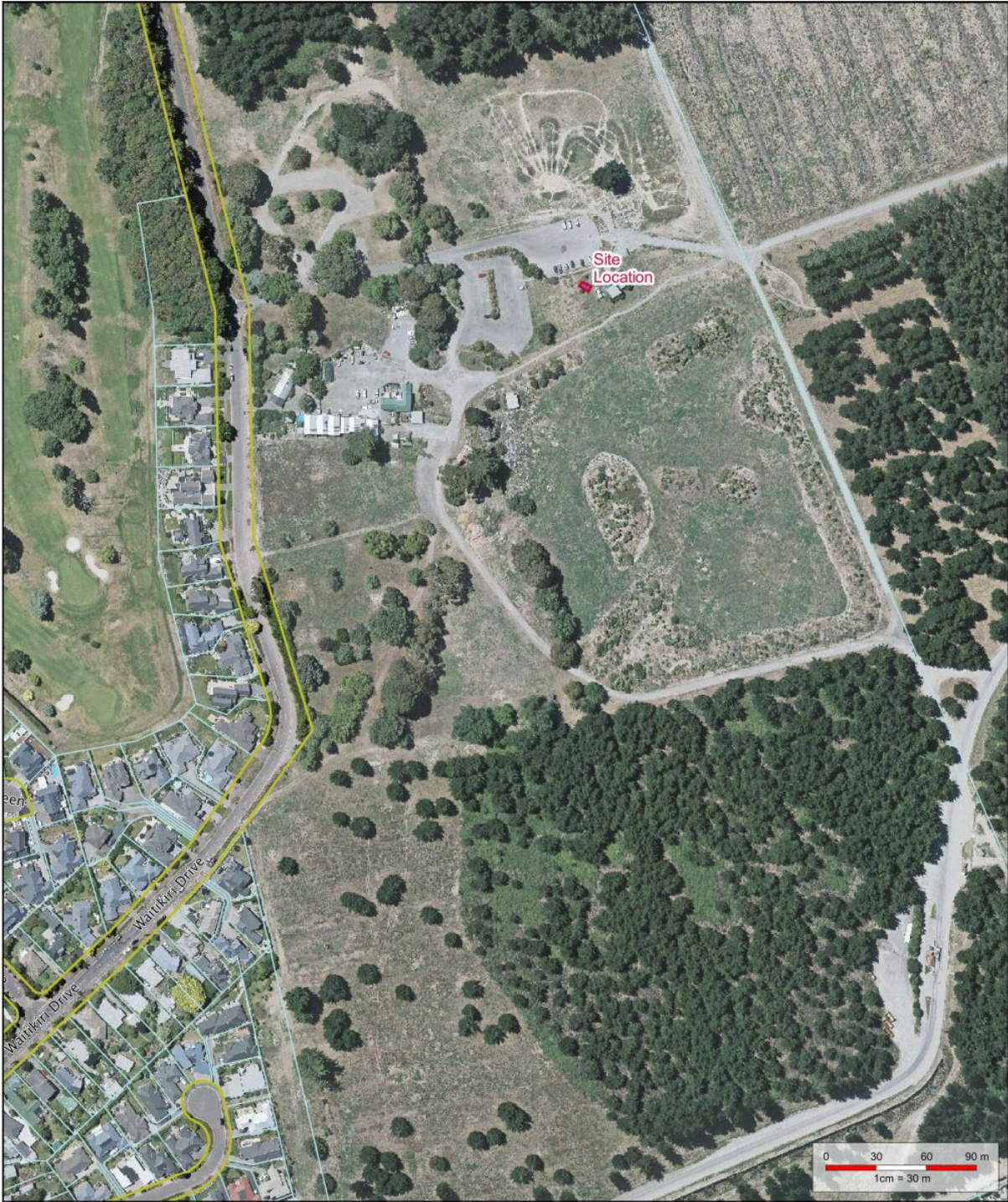
WorkingLevel per tool

- Redline

6-New Brighton - south ramp car park entrance opposite 226 Marine Parade

7- Bottle Lake Forest

Location	70 Waitikiri Drive, Bottle Lake Forest
# of sites available	1
Term	5 years
Commencement Date	1 July 2018
<p>Bottle Lake Forest is in the carpark as you enter the plantation from Waitikiri Drive. Bottle Lake Forest is a well-used attraction for walkers, runners, mountain bikers and the like.</p> <p>Vendors must be self-sufficient on this site as there are no services provided by Council. The vendor must remove their vehicles each night, overnight parking is not permitted on this site.</p>	




1 : 3,000 on A4
 Mar 28, 2018 9:07:12 AM

Christchurch City Council


ph: 941-8300 fax: 941-8385

Accuracy not guaranteed. Onsite verification required. Display of data scale dependent, full detail available at 1:500. Client Selected Legend.

Copyright © 2013 Reproduction prohibited

- Landbase**
-  Road Name
 -  Road Boundary
 -  Rating Unit
 -  Rating Unit (Fill)
 -  Rating Unit (No Fill)
- Aerial Photo 2016**
-  Aerial Photo 2016 CC 5
 -  Aerial Photo 2016 BP 6
 -  Aerial Photo 2016 4
- WorkingLevel per tool**
-  Redline

**7-Bottle Lake Forest
car park site off Waitikiri Drive**

8- Taylors Mistake

Location	Taylors Mistake – car park
# of sites available	1
Term	5 years
Commencement Date	1 July 2018
<p>Taylors Mistake is a busy site with beach activities, a gateway to the tracks leading to Godley Head and the bays.</p> <p>Vendors must be self-sufficient on this site as there are no services provided by Council. The vendor must remove their vehicles each night, overnight parking is not permitted on this site.</p>	








 1 : 1,500 on A4
 Mar 28, 2018 10:37:01 AM



 ph: 941-8300 fax: 941-8385

Accuracy not guaranteed. Onsite verification required. Display of data scale dependent, full detail available at 1:500. Client Selected Legend.

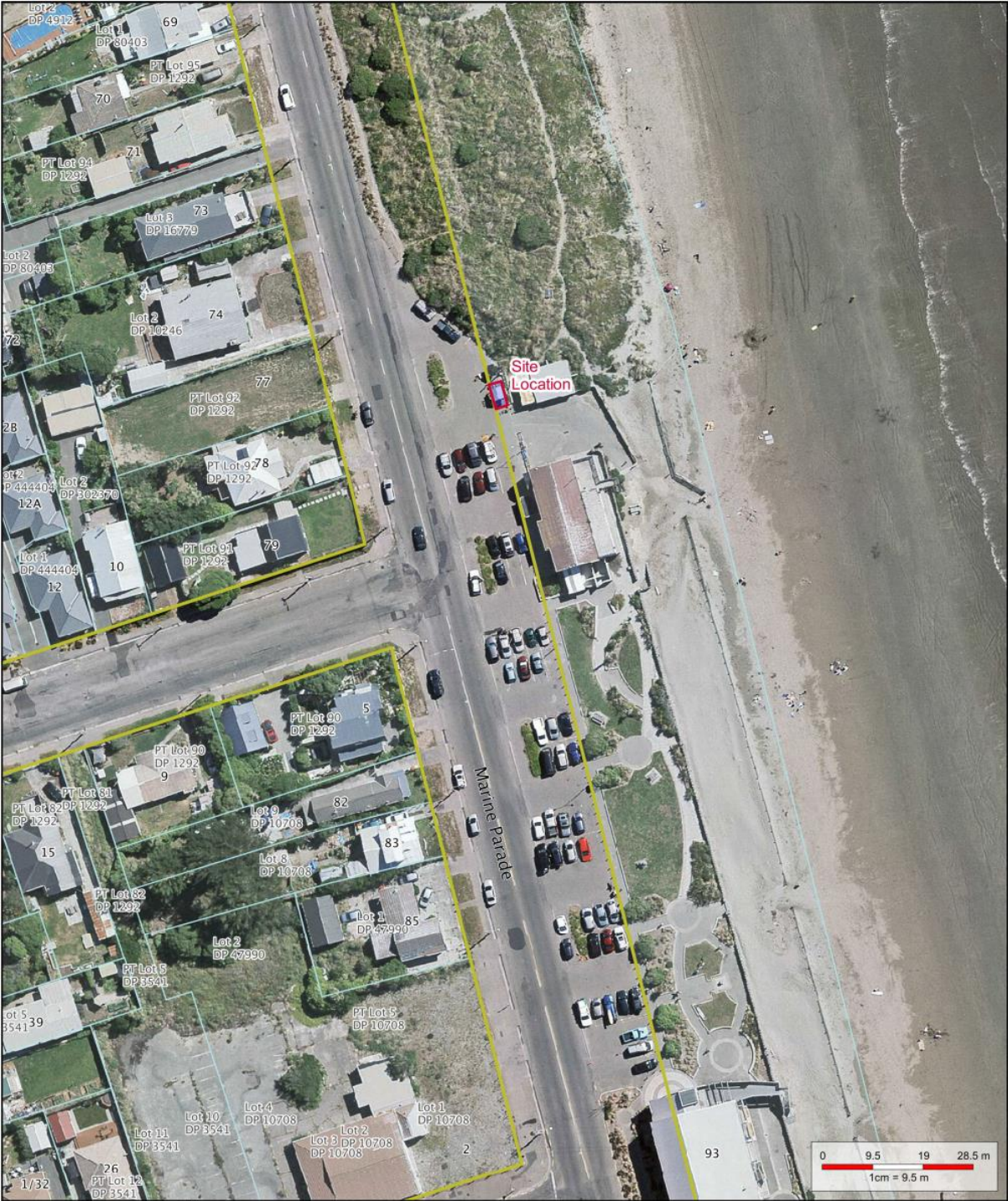
Copyright © 2013 Reproduction prohibited

- Landbase**
- Street Number
 - Road Name
 - Road Boundary
 - Rating Unit
 - Rating Unit (Fill)
 - Rating Unit (No Fill)
- Aerial Photo 2016**
-  Aerial Photo 2016 CC 5
 -  Aerial Photo 2016 BP 6
 -  Aerial Photo 2016 4
- WorkingLevel per tool**
-  Redline

8-Taylors Mistake Beach in the beach car park

9- North Beach

Location	North Beach Surf Club car park
# of sites available	1
Term	5 years
Commencement Date	1 July 2018
North Beach is in the car park next to the North Beach Surf Club. Vendors must be self-sufficient on this site as there are no services provided by Council. The vendor must remove their vehicles each night, overnight parking is not permitted on this site.	





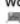


1 : 950 on A4
 Mar 28, 2018 9:31:39 AM



 ph: 941-8300 fax: 941-8385

Accuracy not guaranteed. Onsite verification required. Display of data scale dependent, full detail available at 1:500. Client Selected Legend.

Copyright © 2013 Reproduction prohibited

- Landbase**
- Street Number
 - Legal Description
 - Road Name
 - Road Boundary
 - Rating Unit
 - Rating Unit (Fill)
 - Rating Unit (No Fill)
- Aerial Photo 2016**
-  Aerial Photo 2016 CC 5
 -  Aerial Photo 2016 BP 6
 -  Aerial Photo 2016 4
- WorkingLevel per tool**
-  Redline

9-North Beach
in car park next to North Beach Surf Club
opposite 78 Marine Parade

10- Broad Park

Location	Broad Park – car park Cnr Beach Road & Marine Parade
# of sites available	1
Term	5 years
Commencement Date	1 July 2018
<p>Broad Park is in the car park between the playground and the Waimairi Beach Surf Club.</p> <p>Vendors must be self-sufficient on this site, as there are no services provided by Council. The vendor must remove their vehicles each night, overnight parking is not permitted on this site.</p>	




1 : 950 on A4
 Mar 28, 2018 9:13:31 AM
Christchurch City Council
 ph: 941-8300 fax: 941-8385
 Accuracy not guaranteed. Onsite verification required. Display of data scale dependent, full detail available at 1:500. Client Selected Legend.
 Copyright © 2013 Reproduction prohibited

- Landbase**
- Street Number
 - Legal Description
 - Road Name
 - Road Boundary
 - Rating Unit
 - Rating Unit (Fill)
 - Rating Unit (No Fill)
- Aerial Photo 2016**
-  Aerial Photo 2016 CC 5
 -  Aerial Photo 2016 BP 6
 -  Aerial Photo 2016 4
- WorkingLevel per tool**
-  Redline

10-Broad Park
cnr Beach Road and Marine Parade
between Broad Park and Waimari Surf Club

11- Humphreys Drive

Location	Windsurf Park Cnr Humphreys Drive & Linwood Ave
# of sites available	1
Term	5 years
Commencement Date	1 July 2018
<p>Humphreys Drive site is located in the car park at Windsurf Park on the corner of Humphreys Drive and Linwood Ave.</p> <p>Vendors must be self-sufficient on this site, as there are no services provided by Council. The vendor must remove their vehicles each night, overnight parking is not permitted on this site.</p>	




1 : 1,600 on A4
 Mar 28, 2018 9:58:29 AM

Christchurch City Council
 ph: 941-8300 fax: 941-8385

Accuracy not guaranteed. Onsite verification required. Display of data scale dependent, full detail available at 1:500. Client Selected Legend.

Copyright © 2013 Reproduction prohibited

- Landbase**
- Street Number
 - Road Name
 - Road Boundary
 - Rating Unit
 - Rating Unit (Fill)
 - Rating Unit (No Fill)
- Aerial Photo 2016**
-  Aerial Photo 2016 CC 5
 -  Aerial Photo 2016 BP 6
 -  Aerial Photo 2016 4
- WorkingLevel per tool**
-  Redline

**11-Humphreys Drive
in the carpark of Windsurf Park
cnr Humphreys Dr & Linwood Ave**

12- North Hagley

Location	North Hagley Park Near Deans & Riccarton Ave cnr
# of sites available	1
Term	5 years
Commencement Date	1 July 2018
<p>North Hagley site is located in Hagley Park to the north of the tree line at the entry from the corner of Deans Ave and Hagley Ave.</p> <p>Vendors must be self-sufficient on this site as there are no services provided by Council. The vendor must remove their vehicles each night, overnight parking is not permitted on this site.</p>	




1 : 1,500 on A4
 Mar 28, 2018 10:47:35 AM



 ph: 941-8300 fax: 941-8385

Accuracy not guaranteed. Onsite verification required. Display of data scale dependent, full detail available at 1:500. Client Selected Legend.

Copyright © 2013 Reproduction prohibited

- Landbase**
- Street Number
 - Road Name
 - Road Boundary
 - Rating Unit
 - Rating Unit (Fill)
 - Rating Unit (No Fill)
- Aerial Photo 2016**
- Aerial Photo 2016 CC 5
 - Aerial Photo 2016 BP 6
 - Aerial Photo 2016 4
- WorkingLevel per tool**
- Redline

12-North Hagley Park
on north side of path & trees
200m from cnr Deans Ave Riccarton Rd

13- South Hagley

Location	South Hagley Park Near the former Blenheim Rd roundabout
# of sites available	1
Term	5 years
Commencement Date	1 July 2018
<p>South Hagley site is located in Hagley Park to the south of the tree line at the entry along the path entering the park near the former Blenheim Road roundabout.</p> <p>Vendors must be self-sufficient on this site as there are no services provided by Council. The vendor must remove their vehicles each night, overnight parking is not permitted on this site.</p>	




1:3,200 on A4
 Mar 28, 2018 10:54:56 AM



 ph: 941-8300 fax: 941-8385

Accuracy not guaranteed. Onsite verification required. Display of data scale dependent, full detail available at 1:500. Client Selected Legend.

Copyright © 2013 Reproduction prohibited

- Landbase**
-  Road Name
 -  Road Boundary
 -  Rating Unit
 -  Rating Unit (Fill)
 -  Rating Unit (No Fill)
- Aerial Photo 2016**
-  Aerial Photo 2016 CC 5
 -  Aerial Photo 2016 BP 6
 -  Aerial Photo 2016 4
- WorkingLevel per tool**
-  Redline
 -  Measure Results

**13-South Hagley
opposite ex-Blenheim Rd**

14- Evans Pass

Location	Sumner Road car park
# of sites available	1
Term	5 years
Commencement Date	1 July 2018
<p>Evans Pass site is situated in the car park on the left of Sumner Road just as you cross over Summit Road on the way to Lyttelton from Sumner.</p> <p>Vendors must be self-sufficient on this site as there are no services provided by Council. The vendor must remove their vehicles each night, overnight parking is not permitted on this site.</p>	




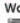


1 : 1,600 on A4
 Mar 28, 2018 10:10:42 AM



 ph: 941-8300 fax: 941-8385

Accuracy not guaranteed. Onsite verification required. Display of data scale dependent, full detail available at 1:500. Client Selected Legend.

Copyright © 2013 Reproduction prohibited

- Landbase**
- Street Number
 - Road Name
 - Road Boundary
 - Rating Unit
 - Rating Unit (Fill)
 - Rating Unit (No Fill)
- Aerial Photo 2016**
-  Aerial Photo 2016 CC 5
 -  Aerial Photo 2016 BP 6
 -  Aerial Photo 2016 4
- WorkingLevel per tool**
-  Redline

**14-Evans Pass
in the car park on Sumner Road**

15a- Akaroa – Weighbridge site

Location	Beach Road Next to the Weighbridge
# of sites available	1
Term	5 years
Commencement Date	1 July 2018
<p>Akaroa – Weighbridge site is located on Beach Road next to the weighbridge.</p> <p>Vendors must be self-sufficient on this site as there are no services provided by Council. The vendor must remove their vehicles each night, overnight parking is not permitted on this site.</p>	




1: 800 on A4
 Mar 28, 2018 10:59:39 AM



 ph: 941-8300 fax: 941-8385

Accuracy not guaranteed. Onsite verification required. Display of data scale dependent, full detail available at 1:500. Client Selected Legend.

Copyright © 2013 Reproduction prohibited

- Landbase**
- Street Number
 - Legal Description
 - Road Name
 - Road Boundary
 - Rating Unit
 - Rating Unit (Fill)
 - Rating Unit (No Fill)
- Aerial Photo 2016**
- Aerial Photo 2016 CC 5
 - Aerial Photo 2016 BP 6
 - Aerial Photo 2016 4
- Working Level per tool**
- Redline
 - Measure Results

15a-Akaroa - Weighbridge
Beach Road next to the Weighbridge

15b- Akaroa – Domain Site

Location	Western side of Akaroa Domain
# of sites available	1
Term	5 years
Commencement Date	1 July 2018
Akaroa – Domain site is located to the west of the Akaroa Domain. Vendors must be self-sufficient on this site as there are no services provided by Council. The vendor must remove their vehicles each night, overnight parking is not permitted on this site.	



1 : 800 on A4
Mar 28, 2018 11:04:09 AM



ph: 941-8300 fax: 941-8385

Accuracy not guaranteed. Onsite verification required. Display of data scale dependent, full detail available at 1:500. Client Selected Legend.

Copyright © 2013 Reproduction prohibited

Landbase

- Street Number
- Legal Description
- Road Name
- Road Boundary
- Rating Unit
- Rating Unit (Fill)
- Rating Unit (No Fill)

Aerial Photo 2016

- Aerial Photo 2016 CC 5
- Aerial Photo 2016 BP 6
- Aerial Photo 2016 4

WorkingLevel per tool

- Redline
- Measure Results

**15b-Akaroa - Domain
in a car park adjacent to the Domain**

16- Corsair Bay

Location	Lower cark park Corsair Bay (Park Terrace)
# of sites available	1
Term	5 years
Commencement Date	1 July 2018
<p>Corsair Bay site is located on lower car park in Corsair Bay (Park Terrace).</p> <p>Vendors must be self-sufficient on this site as there are no services provided by Council. The vendor must remove their vehicles each night, overnight parking is not permitted on this site.</p>	




 1 : 800 on A4
 Mar 28, 2018 10:31:51 AM



 ph: 941-8300 fax: 941-8385

Accuracy not guaranteed. Onsite verification required. Display of data scale dependent, full detail available at 1:500. Client Selected Legend.

Copyright © 2013 Reproduction prohibited

Landbase	
Street Number	
Legal Description	
Road Name	
Road Boundary	
Rating Unit	
Rating Unit (Fill)	
Rating Unit (No Fill)	
Aerial Photo 2016	
Aerial Photo 2016 CC 5	
Aerial Photo 2016 BP 6	
Aerial Photo 2016 4	
Working Level per tool	
Redline	

16-Corsair Bay
in the lower car park off Park Terrace

17- Summit Road at Rapaki Track

Location	Summit Road at Rapaki Track
# of sites available	1
Term	5 years
Commencement Date	1 July 2018
<p>Summit Road at Rapaki Track site is located along the Summit Road in the car park where the Rapaki Track intersects the Summit Road. This site offers amazing panoramic views across the Canterbury Plains and the City.</p> <p>Vendors must be self-sufficient on this site as there are no services provided by Council. The vendor must remove their vehicles each night, overnight parking is not permitted on this site.</p>	



1 : 1,600 on A4

Mar 28, 2018 10:03:25 AM



ph: 941-8300 fax: 941-8385

Accuracy not guaranteed. Onsite verification required. Display of data scale dependent, full detail available at 1:500. Client Selected Legend.

Copyright © 2013 Reproduction prohibited

Landbase

- Street Number
- Road Name
- Road Boundary
- Rating Unit
- Rating Unit (Fill)
- Rating Unit (No Fill)

Aerial Photo 2016

- Aerial Photo 2016 CC 5
- Aerial Photo 2016 BP 6
- Aerial Photo 2016 4

WorkingLevel per tool

- Redline

**17-Summit Rd @ Rapaki Track
in the car park as Rapaki Track
joins Summit Rd**

18- South New Brighton Park

Location	South New Brighton Park Entrance off Beatty St
# of sites available	1
Term	5 years
Commencement Date	1 July 2018
<p>South New Brighton Park site is located in South New Brighton Park with the entrance to the park off Beatty Street.</p> <p>Vendors must be self-sufficient on this site as there are no services provided by Council. The vendor must remove their vehicles each night, overnight parking is not permitted on this site.</p>	



1 : 1,600 on A4

Mar 28, 2018 9:52:45 AM



ph: 941-8300 fax: 941-8385

Accuracy not guaranteed. Onsite verification required. Display of data scale dependent, full detail available at 1:500. Client Selected Legend.

Copyright © 2013 Reproduction prohibited

Landbase

- Street Number
- Road Name
- Road Boundary
- Rating Unit
- Rating Unit (Fill)
- Rating Unit (No Fill)

Aerial Photo 2016

- Aerial Photo 2016 CC 5
- Aerial Photo 2016 BP 6
- Aerial Photo 2016 4

WorkingLevel per tool

- Redline

**18-South New Brighton Park
entrance off Beatty St**

19- South Brighton Surf Club

Location	South Brighton Surf Club car park Opposite Bridge Street
# of sites available	1
Term	5 years
Commencement Date	1 July 2018
<p>South New Brighton Surf Club site is located near the entrance to the car park for the South New Brighton Surf Club opposite Bridge Street.</p> <p>Vendors must be self-sufficient on this site as there are no services provided by Council. The vendor must remove their vehicles each night, overnight parking is not permitted on this site.</p>	



1 : 400 on A4
Mar 28, 2018 9:42:27 AM



ph: 941-8300 fax: 941-8385

Accuracy not guaranteed. Onsite verification required. Display of data scale dependent, full detail available at 1:500. Client Selected Legend.

Copyright © 2013 Reproduction prohibited

Landbase

- Street Number
- Legal Description
- Road Name
- Road Boundary
- Rating Unit
- Rating Unit (Fill)
- Rating Unit (No Fill)

Aerial Photo 2016

- Aerial Photo 2016 CC 5
- Aerial Photo 2016 BP 6
- Aerial Photo 2016 4

WorkingLevel per tool

- Redline

**19-South Brighton Surf Club
Marine Parade opposite Bridge St**