



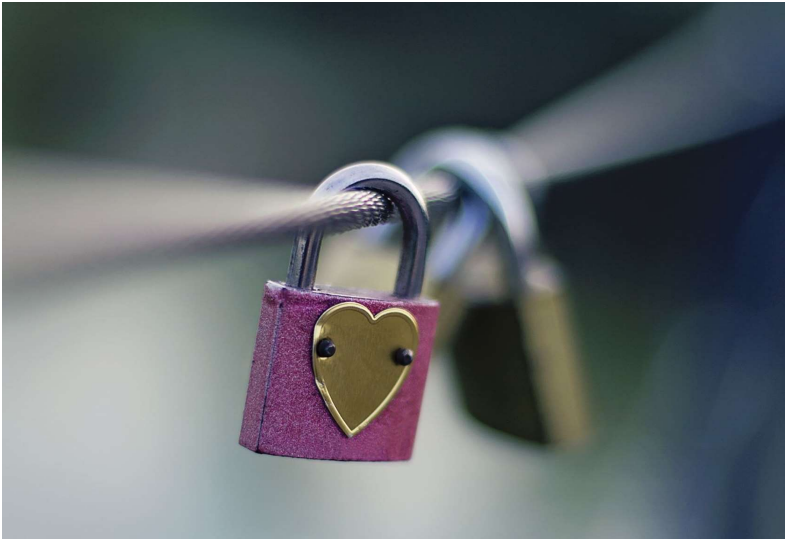
PASTORAL TEAM

PD

Monday 29th May

QUIZLET

# STATEMENT



- *KingsWay School adopts a conservative evangelical biblical view on matters of relationships and sexuality.*
- *We affirm the role of parents in the education of young people in this area. We work in partnership with parents throughout the schooling lifecycle of a student to ensure matters of relationships and sexuality education are addressed in an age-appropriate way and in keeping with our special character.*
- *Presently, at primary level, we focus on a child's position in Christ and how this is the basis for healthy relationships with others.*
- *In the middle years, the Middle School offers relationship evenings for parents and children to attend together that address puberty and relationship matters at an age appropriate level.*
- *At Senior School matters of relationships and sexuality are explored in keeping with a conservative, evangelical biblical perspective.*



# STATS

- NZ 2021 - 4.4 percent of Aotearoa's adult population identified as LGBT+
- people in the LGBT+ populations were over 2 times more likely than those not in the LGBT+ populations to experience daily feelings of depression.

A circular graphic with a pink outer ring and a black center. The pink ring contains the text "SAVE THE DATE! JUNE 12 - JUNE 16 2023" at the top and "SAVE THE DATE! JUNE 12 - JUNE 16 2023" at the bottom, separated by two pink stars. The black center features the text "Schools' Pride Week Aotearoa" in white serif font. In the background of the center, there is a faint, colorful swirl pattern. A small black square with a white diagonal line is located on the right side of the graphic.

SAVE THE DATE! JUNE 12 - JUNE 16 2023

★

**Schools' Pride Week Aotearoa**

★

SAVE THE DATE! JUNE 12 - JUNE 16 2023



**INCLUSIVE NOT  
AFFIRMING**

# SCENARIOS

The background of the slide is a complex fractal pattern. It consists of numerous small, intricate spirals and wavy lines that create a sense of depth and movement. The color palette is primarily blue, ranging from deep navy to light sky blue, with accents of white and purple. The overall effect is that of a highly detailed, organic-looking structure.

**How do we respond??**

# RESOURCES

- [Gender | Axis](#)
- [Sexuality | Axis](#)
- [Porn | Axis](#)

**Connecting Parents,  
Teens, & Jesus in a  
Disconnected World**