

25/10/2023 - E +11 SITREPS

As at 9.43am on 25/10/2023 prepared by Crispian [REDACTED]

Distributed to	All GEDT/ELT members
Key Contacts	Anusha Guler and Crispian [REDACTED]
Previous ELT SITREP	E+10 SITREPS 7 24102023 - FINAL.docx
	Opening Karakia: Pou Hihiri. Pou Rarama. Tena te pou, Te Poutokomanawa o tēnei whare Te pou Tūhonohono Te pou Arataki Te pou Uakaha Te pou Manaaki Te pou o te Tika Te pou ka toko, ka hiki, ka eke. Ū te pou. Maia te pou. Rarawe te pou Hui te mārama. Hui te ora. Whano, whano! Haramai te toki – Haumi e! Hui e – Tāiki e!
Overview	Summary of the current event <ul style="list-style-type: none">• Post election process
Voting Services	GENERAL UPDATE Overseas Operations <ul style="list-style-type: none">• Auckland North Region• Auckland South Region• Central North Island Region• Lower North Island Region• South Island Region Voting Services: <ul style="list-style-type: none">•
Enrolment	GENERAL UPDATE: <ul style="list-style-type: none">•
IT	GENERAL UPDATE: <ul style="list-style-type: none">•
Comms & Education	GENERAL UPDATE: <ul style="list-style-type: none">•

Customer Services	GENERAL UPDATE: •
Legal & Policy	GENERAL UPDATE •
Strategic Engagement and Partnership	GENERAL UPDATE •
Security	GENERAL UPDATE •
People & Culture	GENERAL UPDATE: •
	<p>Closing Karakia:</p> <p>Koia tēnei te whakairi ake i te kete whakaaro, i te kete kōrero ki te epa o te whare Karakia whakamutunga Tēnei te whakamoe tai o tēnei o ngā whare kōrero Whakamoe tai Whakamoe ahiahi/kaupapa Whakamoe tēnei whare kōrero Ko lo te pū, lo tā koutou weu, lo tā koutou tāmōre Tēnei te hau Tēnei te hau kiwi, te hau weka Tēnei te hau ka kawea mai, ka tau mai, ka mārire mai, ka māhaki mai Māhaki ki te rangi Māhaki ki te whenua Māhaki ki ngā tāngata katoa E Rongo, whakairihia te kete kōrero ki runga, kia Tina – Tina! Hui e – Tāiki e!</p>



Issued: 1035hrs 25 Oct 2023

Authorised by: [REDACTED] – Watch Leader

Next update: 1030hrs 26 Oct 2023

Executive Summary

- There are warnings and watches for heavy rain, strong winds and heavy snow are in force across New Zealand.
- Tropical Cyclone Lola is currently graded at Category 4 and is tracking over the islands of Vanuatu.

NEMA Operational Status

Operational Activity

- NCC is at Mode 1 (MAR Centre Monitoring).

On-Call Roster

Director	[REDACTED]
National Controller	[REDACTED]

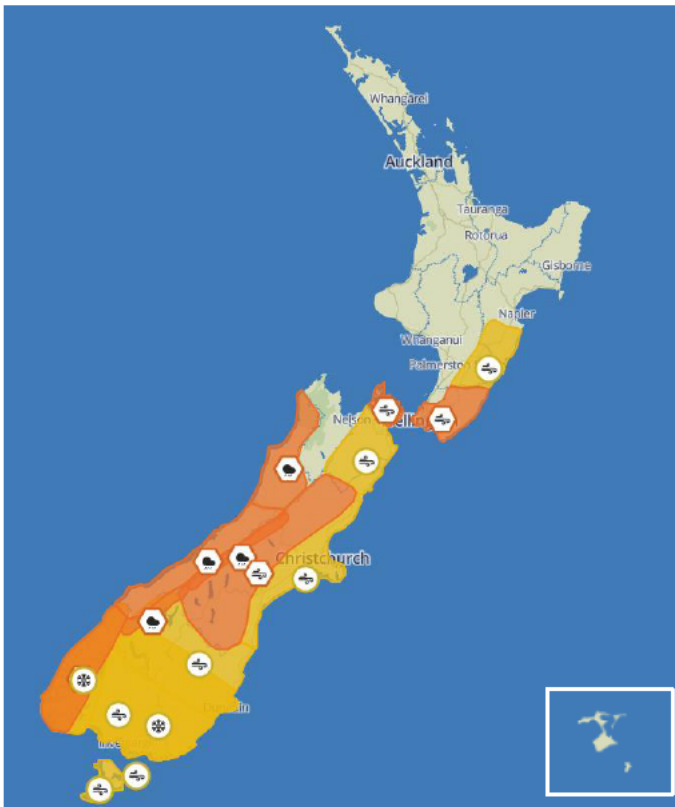
Response Manager	[REDACTED]
Activation Coordinator	[REDACTED]

PIM	[REDACTED]
REMA North	[REDACTED]
REMA South	[REDACTED]

Response Activity

Nothing to report.

Weather and Climate



Accurate from MetService as at 1000hrs today.

Current Weather

An active front approaches the South Island from the Tasman Sea late today before moving northwards on Thursday, followed by a cold west to southwest flow.

There are warnings and watches for heavy rain, strong winds and heavy snow are in force across the Motu.

Heavy rain warning

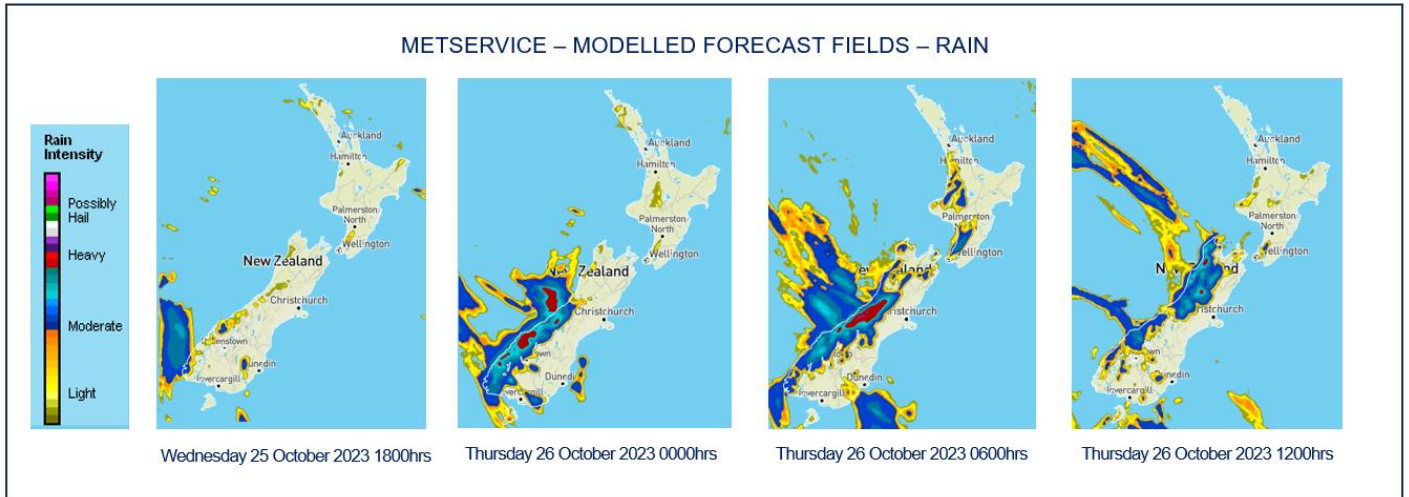
- Westland north of Otira and Buller from 0700hrs today to 1900hrs tomorrow.
- Westland about and south of Otira from 2000hrs today to 1100hrs tomorrow.
- Headwaters of Canterbury Lakes and Rivers about and south of Arthur's Pass from 2200hrs today to 1100hrs tomorrow.
- Headwaters of Otago Lakes and Rivers from 2000hrs today to 0700hrs tomorrow.
- Fiordland from 1800hrs today to 0600hrs tomorrow.

Strong wind warning

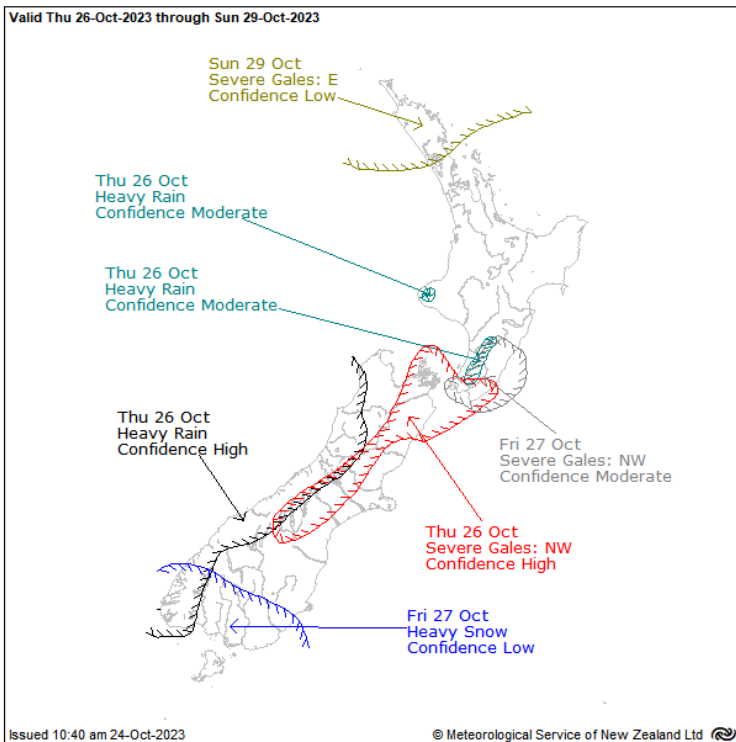
- Marlborough Sounds, Wellington and Wairarapa from 0600hrs tomorrow to 2000hrs tomorrow.
- Canterbury High Country from 2100hrs today to 1100hrs tomorrow.

Strong wind watches

- Tararua District and Hawke’s Bay south of Hastings from 0900hrs tomorrow to 2300hrs tomorrow.
- Marlborough excluding the Sounds from 0600hrs tomorrow to 1800hrs tomorrow.
- Canterbury Plains including Banks Peninsula from 0600hrs tomorrow to 1800hrs tomorrow.
- Otago excluding Clutha from 2000hrs today to 1100hrs tomorrow.
- Clutha, Southland, Stewart Island and Fiordland from 1500hrs today to 1100hrs tomorrow.



Severe Weather Outlook



On Thursday, a front moves northeast over the South Island and onto the lower North Island, followed by a cold southwesterly flow. There is high confidence that rainfall accumulations will reach warning amounts in Fiordland, Westland, Buller and the headwaters of the Otago and Canterbury lakes and rivers. There is high confidence in severe northwest gales for exposed parts of the Canterbury high country and foothills, Marlborough, Wellington and Wairarapa south of Carterton. There is moderate confidence that rainfall over Mt Taranaki and the Tararua Range will reach warning amounts.

A strong cold southwesterly flow is expected to affect the South Island on Friday. Snow showers could lower to near sea level over parts of the South Island. There is low confidence in warnings amounts of snow for Clutha, Southland and the south of Fiordland. While warning amounts of snow are not expected farther north over the South Island, there is still a risk that roads will be affected by snow. The strong southwesterly winds, cold temperatures and snow to low levels is likely to affect the entire South Island, possibly bringing stress to livestock.

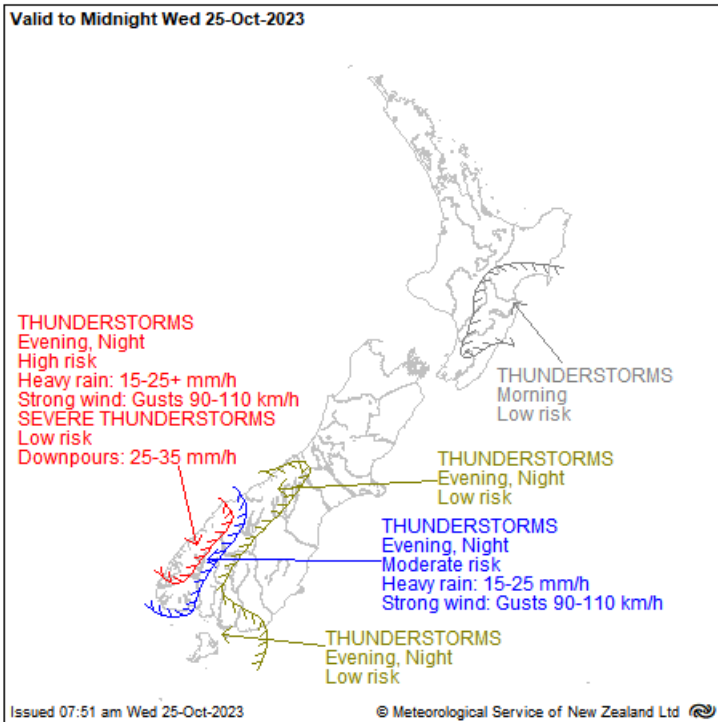
On Friday, there is moderate confidence that severe northwest gales will affect Wellington and Wairarapa including the Tararua District. A ridge of high pressure is expected to bring settled weather to New Zealand on Saturday.

A ridge of high pressure is expected to bring settled weather on Saturday.

UNCLASSIFIED

On Sunday, an area of low pressure may approach the North Island from the north, possibly Tropical Cyclone Lola. It is important to note the current uncertainty associated with the development and movement of Tropical Cyclone Lola. Refer to 'Other Events' for the most up-to-date information.

Thunderstorm Outlook



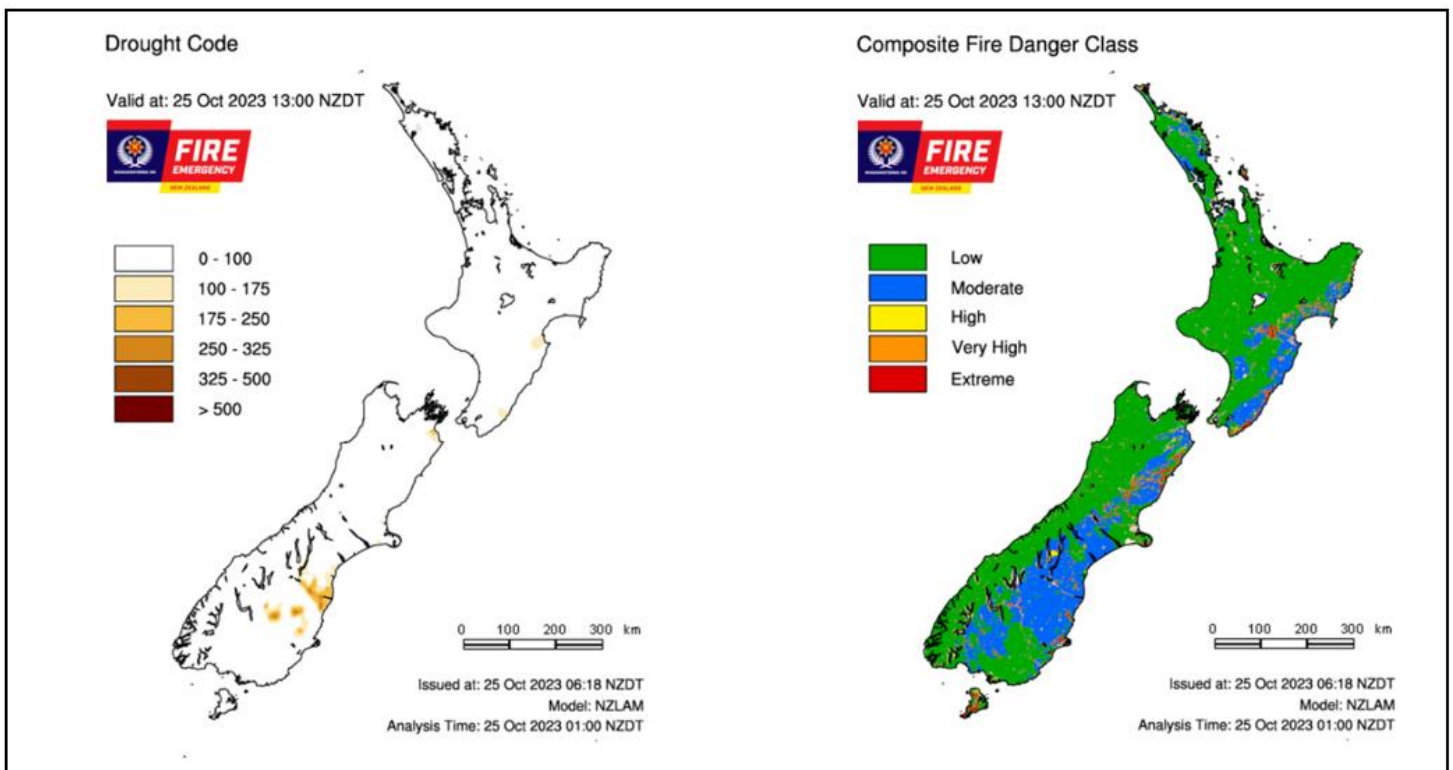
An unstable westerly flow covers the central and southern North Island this morning as an upper cold trough moves across the area. There is a low risk of thunderstorms about ranges from the Kaimanawas to the northern Tararuas, southern Gisborne, Hawke's Bay and Tararua District this morning.

Later today, a front and associated rain-band in the Tasman Sea will move onto the southern South Island. There is a high risk of thunderstorms within the rain-band about the mountains of northern and central Fiordland from this evening, and a moderate risk of thunderstorms spreading into southern Fiordland, far western Southland and Otago headwaters. There is a lower risk of thunderstorms about other parts of Southland, southern Westland and the southern Canterbury High Country from late evening.

These thunderstorms will boost local rainfall rates, mainly in the 15-25mm/h range, but there is a low risk of 25-35mm/h downpours associated with the thunderstorms about the Fiordland mountains. The thunderstorms will also be embedded within a strong

northwest flow, so gusts of 90-110km/h are possible, however as the storms are elevated, they are not expected to contribute any extra wind gusts.

Fire and Drought Risk



Prepared by the NEMA Monitoring, Alerting and Reporting Centre to provide awareness that supports informed decision making. Any questions, comments or contributions should be addressed to: mar@nema.govt.nz.

Geological

Volcanic Activity (Level 1 and above)

Volcano	Level	Volcanic Activity	Aviation Code
Whakaari/ White Island	2	Moderate to heightened volcanic unrest	Yellow
Ruapehu	1	Minor volcanic unrest	Green

GNS Alert Levels guide visit: <https://www.geonet.org.nz/about/volcano/va/>

GNS Aviation Colour Codes visit: <https://www.geonet.org.nz/volcano/acc/>

Other Events

Tropical Cyclone Lola

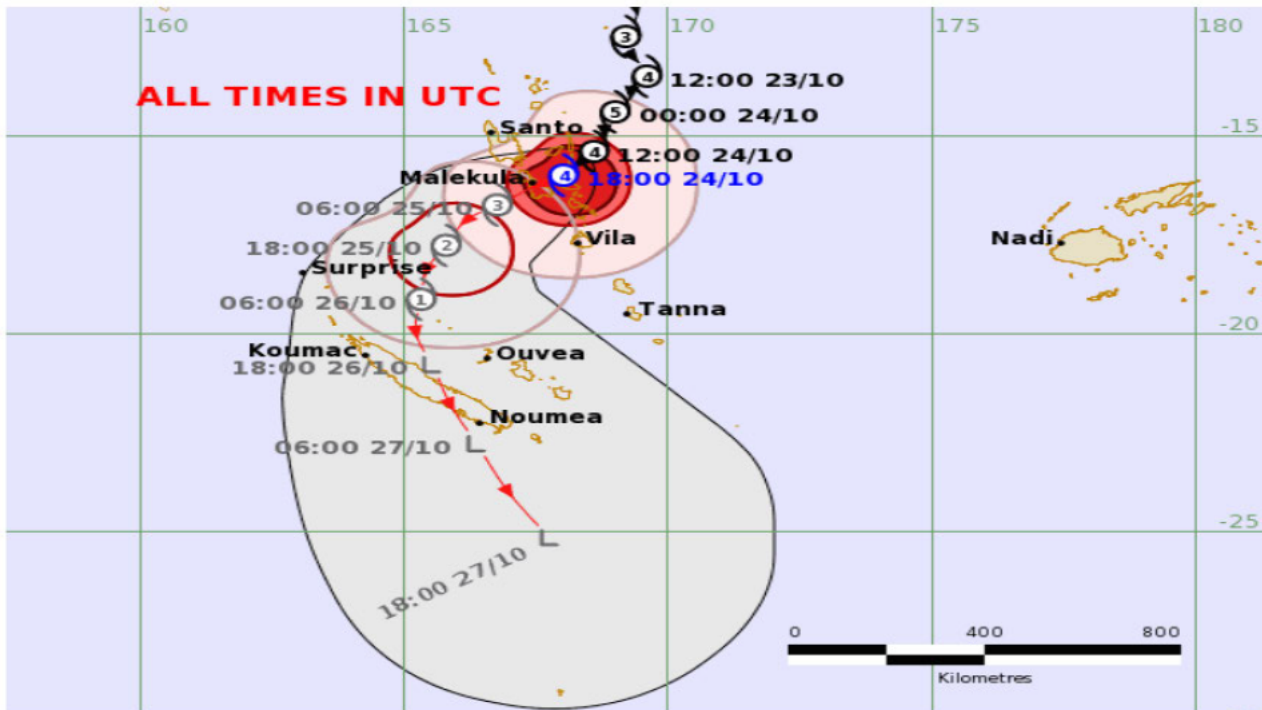
Tropical Cyclone Lola has been downgraded to Category 4 by the Fiji Meteorological Service. Tropical Cyclone Lola currently lies within Fiji's areas of responsibility and is moving south/southwest at approximately 11km/hr. It is currently passing over Vanuatu. Hurricane force winds of approximately 165km/h are expected near the centre as it continues to move southwest today.

Official warnings and track maps can be found on the Fiji Meteorological Service website (<https://www.met.gov.fj/>).

TROPICAL CYCLONE FORECAST TRACK MAP

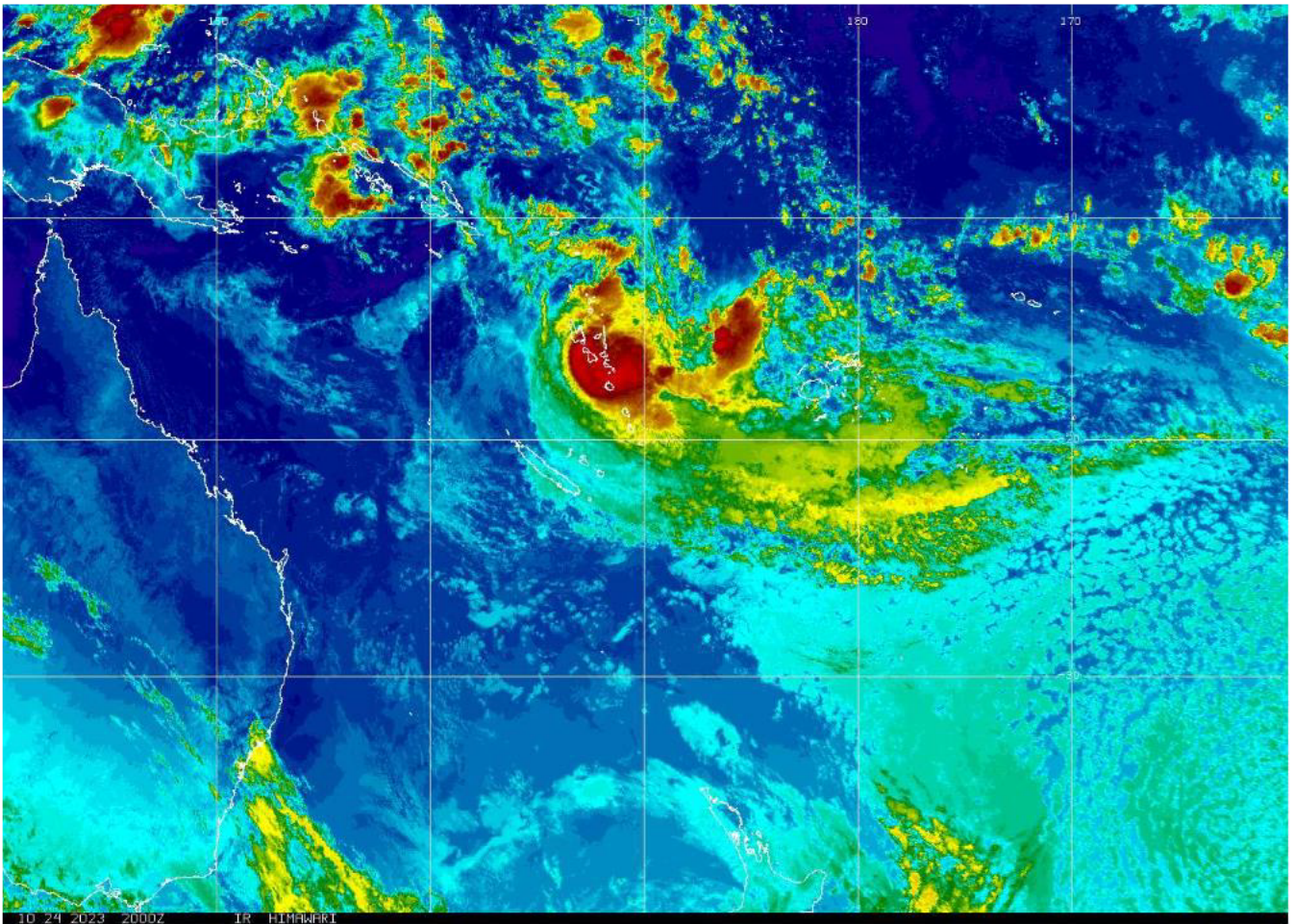
Severe Tropical Cyclone Lola

Tropical Cyclone Warning Number 18 issued 1926 UTC Tuesday 24 October 2023



Current and Past Cyclone Details	Forecast Cyclone Details (at 24, 48 and 72 hours from issue)
Current Location and Intensity Number	④ or L
Very Destructive Hurricane Force Winds	Very Destructive Wind Boundary
Destructive Storm Force Winds	Destructive Wind Boundary
Damaging Gale Force Winds	Gale Force Wind Boundary
Past Track and Movement	Most Likely Future Track
Past Location and Intensity Number	④ or L
	Range of Likely Tracks over 72 hours

Source: [Fiji Meteorological Service](https://www.met.gov.fj/)



Source: [Fiji Meteorological Service](#)

Media

Two South Island earthquakes within 13 hours: what caused them?

The South Island has been rattled by two widely-felt earthquakes within half a day – but scientists say there's no direct link between them.

NZ Herald

Council to consult Waitara residents about flooding

Waitara residents with memories of being flooded in the North Taranaki town are being asked to contact the New Plymouth District Council as the first stage of major storm water upgrades begins.

Stuff

Cyclone-damaged Coromandel campgrounds reopen with reduced capacity

Five campgrounds on the tip of the peninsula were severely damaged by the cyclone in February and have been closed for several months for repairs. Department of Conservation Coromandel operations manager Nick Kelly said all the campsites were now open again, after extensive repair work.

1news