

# 01/11/2023 - E +18 SITREPS

As at 3.18pm on 01/11/2023 prepared by Crispian [REDACTED] approved by Anusha Guler

<b>Distributed to</b>	All GEDT/ELT members
<b>Key Contacts</b>	Anusha Guler and Crispian [REDACTED]
<b>Previous ELT SITREP</b>	<a href="#">E+17 SITREPS 8 31102023 - FINAL.docx</a>
<b>Overview</b>	<p><b>Summary of the current event</b></p> <ul style="list-style-type: none"> <li>• Post election process</li> <li>• Official count for Special Votes and Ordinary Votes.</li> <li>• Friday, 03 November release of official results</li> </ul>
<b>Voting Services</b>	<p><b>GENERAL UPDATE</b></p> <p><b>Overseas Operations</b></p> <ul style="list-style-type: none"> <li>• Counts will be finished today.</li> <li>• Focusing on getting the dual votes &amp; Post Writ changes cleaned up.</li> <li>• Progressing with requests from electorates for Special Vote declarations.</li> </ul> <p><b>Auckland North Region</b></p> <ul style="list-style-type: none"> <li>• Several electorates are experiencing issues with uploading batches into ERSA. Voting Services has provided assistance.</li> <li>• On track to complete the counts by tonight, it may be a late night for a couple of electorates, making sure we have a JP present for the evening shifts.</li> <li>• The Whangarei/Te Tai Tokerau Dual Votes are being progressed today, Linda [REDACTED] is helping these electorates.</li> </ul> <p><b>Auckland South Region</b></p> <ul style="list-style-type: none"> <li>• 6 out of 13 electorate Special Votes counts are completed. All others on track to finish by completion of business by today.</li> <li>• Progressing with finalising dual votes.</li> </ul> <p><b>Central North Island Region</b></p> <ul style="list-style-type: none"> <li>• No issues to report.</li> <li>• Progressing with Special Votes count.</li> <li>• Progressing well with dual votes. Number ranges from 2 – 20, no specific assistance needed.</li> <li>• All electorates are on track for count completion.</li> </ul> <p><b>Lower North Island Region- (Allison)</b></p> <ul style="list-style-type: none"> <li>• Progressing with merged electors and final qualifications.</li> <li>• Special votes will be completed by 1pm today.</li> </ul> <p><b>South Island Region</b></p> <ul style="list-style-type: none"> <li>• 13/17 electorates have completed their Special Vote counts, another 3 will be completed in the next hour or so.</li> <li>• Christchurch Central and Selwyn/Te Tai Taonga have a full day of counting. Christchurch Central have completed 50% and are being assisted by Christchurch East.</li> <li>• Selwyn will finish Te Tai Taonga by 1pm and are being assisted by Waimakariri.</li> <li>• Progressing with dual votes.</li> </ul> <p><b>Voting Services (VS):</b></p> <ul style="list-style-type: none"> <li>• Progressing on post writ changes report and merged electors.</li> <li>• To inform field staff on IT checklist via Pānui</li> </ul>
<b>Enrolment</b>	<p><b>GENERAL UPDATE:</b></p> <ul style="list-style-type: none"> <li>• Enrolment team undertaking a review session tomorrow. Temporary GE staff will finish up by Friday.</li> </ul>

	<ul style="list-style-type: none"> <li>• Requesting Voting Services field staff to provide all Special Vote declarations by today.</li> <li>• Permanent enrolment team staff available to undertake investigations as needed.</li> </ul>
<b>IT</b>	<p><b>GENERAL UPDATE:</b></p> <ul style="list-style-type: none"> <li>• EMS Release planned for tonight at 8pm subject to approval. This supports the changes to Port Waikato as part of the local generation of the E9 ahead of the media release on Friday. Note that EMS will be down for approx. 30 mins from 8pm</li> <li>• A potential issue with ERSA data is being investigated with the product owner and Catalyst, an IT incident process has been initiated to track progress and maintain focus.</li> </ul>
<b>Comms &amp; Education</b>	<p><b>GENERAL UPDATE:</b></p> <ul style="list-style-type: none"> <li>• Commentary from political leaders regarding the length of time to complete the official count.</li> <li>• Media advisory briefing on the official result from 1pm on Friday, high media interest with 33 RSVPs</li> <li>• Television channels are planning live specials from 2pm</li> </ul>
<b>Customer Services</b>	<p><b>GENERAL UPDATE: (apology from Grace)</b></p> <ul style="list-style-type: none"> <li>• No issues to report.</li> </ul>
<b>Legal &amp; Policy</b>	<p><b>GENERAL UPDATE</b></p> <ul style="list-style-type: none"> <li>• Complaint received by Legal team today about activity (treating and conflict of interest) near the voting place at Manurewa Marae. To be circulated to Martin, Anusha and Karl.</li> <li>• Reminder to Voting Services field staff to send all dual votes in sealed envelopes to Legal &amp; Policy</li> </ul>
<b>Strategic Engagement and Partnership</b>	<p><b>GENERAL UPDATE</b></p> <ul style="list-style-type: none"> <li>• No issues to report.</li> </ul>
<b>Security</b>	<p><b>GENERAL UPDATE</b></p> <ul style="list-style-type: none"> <li>• No issues to report</li> </ul>
<b>People &amp; Culture</b>	<p><b>GENERAL UPDATE:</b></p> <ul style="list-style-type: none"> <li>• No issues to report.</li> </ul>



Issued: 1030hrs 01 Nov 2023

Authorised by: [REDACTED] – Watch Leader

Next update: 1030hrs 02 Nov 2023

## Executive Summary

- A severe thunderstorm watch is in force for east coast of the North Island.
- A magnitude 6.6 earthquake occurred off the coast of Chile early this morning and was assessed as no threat to New Zealand.

## NEMA Operational Status

### Operational Activity

- NCC is at Mode 1 (MAR Centre Monitoring).
- Two of NEMA's Rapid Response Team remain in Vanuatu, embedded in the National Disaster Management Office (NDMO) to assist with the response to impacts caused by Tropical Cyclone Lola.

### On-Call Roster

Director	[REDACTED]
National Controller	[REDACTED]

Response Manager	[REDACTED]
Activation Coordinator	[REDACTED]

PIM	[REDACTED]
REMA North	[REDACTED]
REMA South	[REDACTED]

## Response Activity

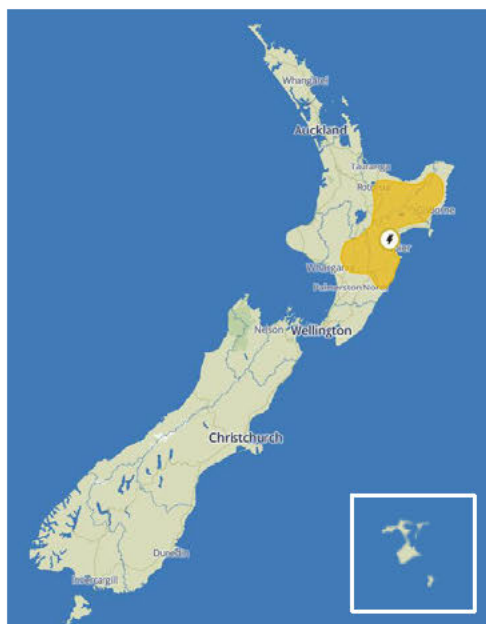
### North Island Severe Weather

As the weather has eased in the North Island, power has been restored to a majority of the upper North Island, however isolated power outages remain with very few impacted. Over the past 24 hours the weather system has moved southeast, causing minimal surface flooding and damage to lifelines. All roads impacted by this weather event have been re-opened.

### Magnitude 6.6 Chile Earthquake

At 0134hrs this morning, a magnitude 6.6 earthquake occurred off the coast of central Chile at a depth of 20 km. The MAR Centre was notified through the Pacific Tsunami Warning Centre (PTWC) notifications. It was assessed as no threat to New Zealand as it was below threshold. No reports of damage or destruction have been observed.

## Weather and Climate

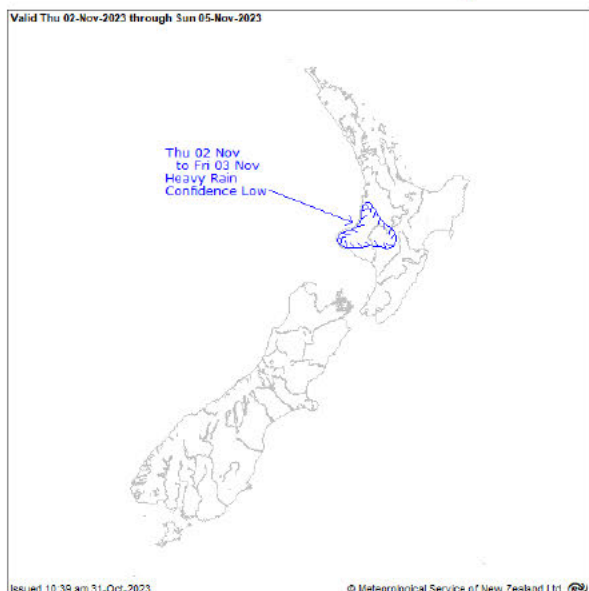


Accurate from MetService as at 1000hrs today.

### Current Weather

It is generally fine across the country with cloud and scattered showers in some areas.

Thunderstorms are expected to develop over central and southern North Island this afternoon, bringing heavy rain. This is reported on in the thunderstorm outlook below.

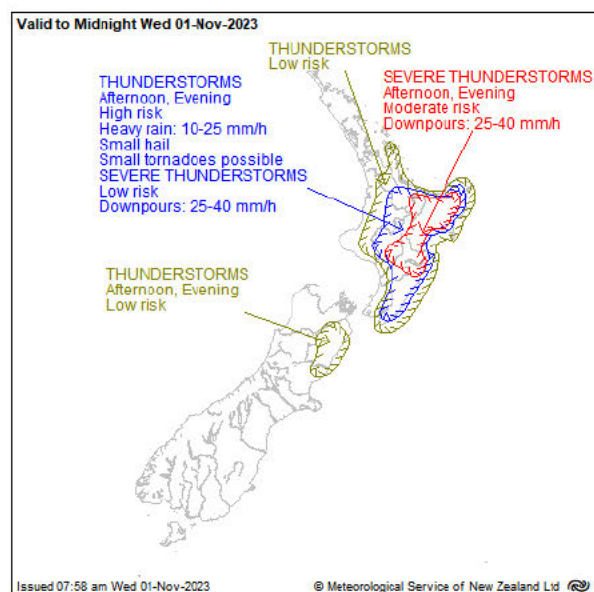


### Severe Weather Outlook

A series of weak troughs and fronts are expected to move over Aotearoa during the outlook period. On Sunday, a high should develop over the South Island.

A front moving over the North Island late Thursday and during Friday could bring some heavy rain. There is low confidence that a heavy rainfall warning will be needed for the higher ground of Waitomo, Taranaki, and across to the Tongariro National Park.

Otherwise, afternoon warm air movement is expected in several inland areas during the outlook period and there may be localised heavy rain in some places, but widespread heavy rain is unlikely.



### Thunderstorm Outlook

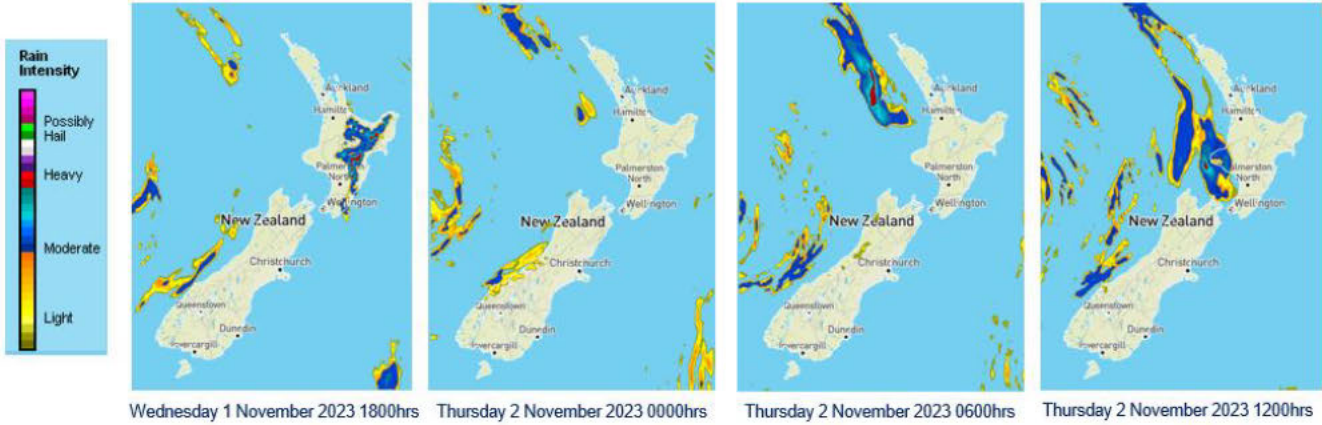
Scattered heavy showers and thunderstorms are expected about parts of the central and southern North Island today.

This afternoon, there is a high risk of thunderstorms from eastern Waikato, across inland Bay of Plenty, Rotorua to Gisborne, and south to inland Whanganui, Manawatu, Hawke's Bay, and Wairarapa. These thunderstorms will produce localised heavy rain of 10-25 mm/h, small hail, and even the risk of a small tornado. Additionally, there is a low risk that some of these thunderstorms could become severe and produce localised downpours of 25-40 mm/h.

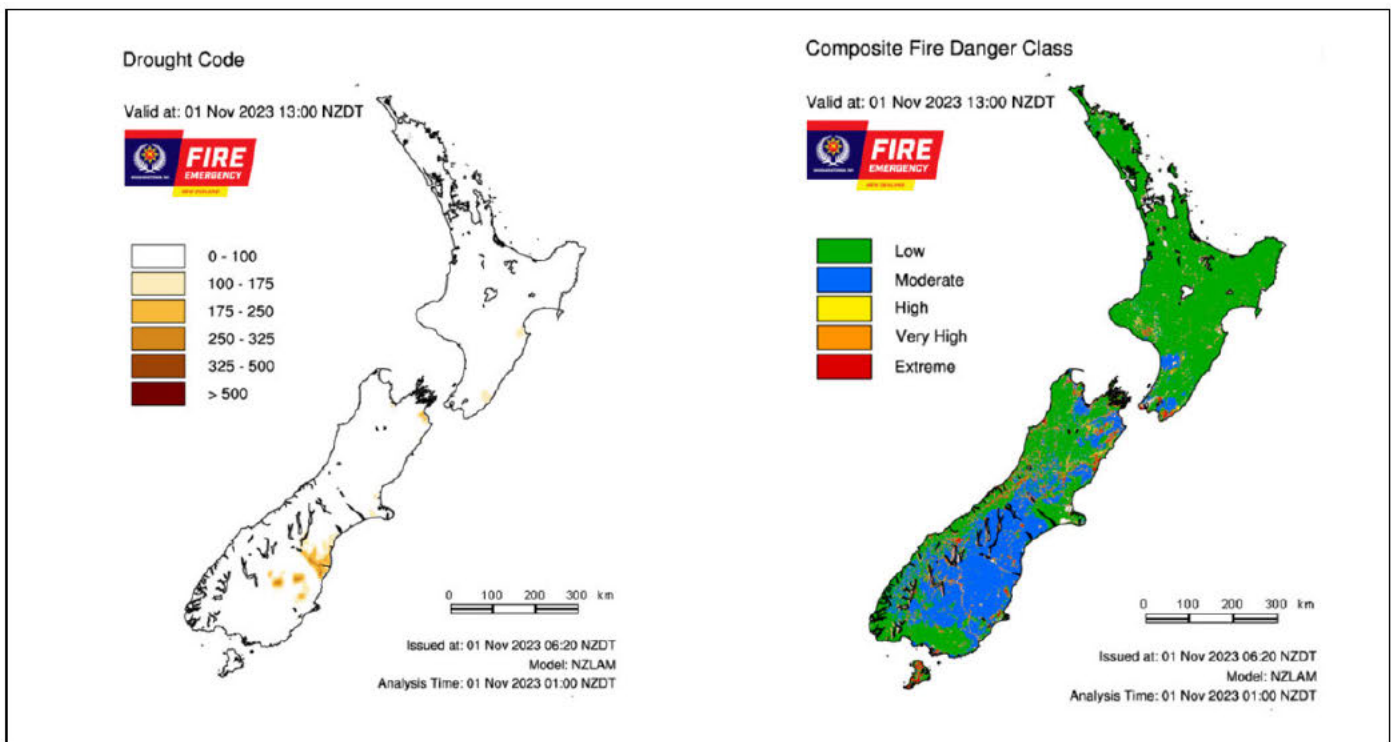
However, about the central and eastern areas of the North Island, the risk of severe thunderstorms increases to moderate, and a severe thunderstorms watch is in force. There are lower risks of thunderstorms across most of the North Island and inland Marlborough and North Canterbury.

UNCLASSIFIED

METSERVICE – MODELLED FORECAST FIELDS – RAIN



**Fire and Drought Risk**



Source: NIWA Fire Weather

**Geological**

**Volcanic Activity (Level 1 and above)**

Volcano	Level	Volcanic Activity	Aviation Code
Whakaari/ White Island	2	Moderate to heightened volcanic unrest	Yellow
Ruapehu	1	Minor volcanic unrest	Green

GNS Alert Levels guide visit: <https://www.geonet.org.nz/about/volcano/va/>

GNS Aviation Colour Codes visit: <https://www.geonet.org.nz/volcano/acc>

**Other Events**

Nothing to report.

## Media

### **Kiwi help on its way for Australian firefighters battling wildfire raging for a week**

New Zealand firefighters are due to arrive in Queensland to help battle a blaze that continues to threaten homes across the state.

**Stuff**

### **Mega game of pick-up sticks as work begins to clear cyclone-sunk Hawke's Bay bridge**

The bridge - which for years acted as a key link between Wairoa and the rest of Hawke's Bay - was completely collapsed by Cyclone Gabrielle as raging floodwater and wooden debris tore through the gorge, isolating Wairoa from the rest of Hawke's Bay.

**NZHerald**

### **Powerful 6.6-earthquake strikes off coast of Chile and felt in neighbouring Argentina**

A magnitude 6.6 earthquake has struck off the coast of northern Chile, and has been felt in several provinces of neighbouring Argentina

**ABCNews**