

31 July 2015

Mr Ben Ross  
Auckland

BY EMAIL

Dear Mr Ross

**Local Government Official Information and Meetings Act 1987**

**Re: Manukau Bus Interchange CAS-38676-Y7F3B3**

Thank you for your email which we received on 6 July 2015, requesting information regarding Manukau Bus Interchange;

*1) When will the final designed be released into the public domain*

The current programme has concept design being available at the end of September 2015, and the developed design to be available at the end of January 2016.

*2) If finalised already can they be released into the public domain please*

Please see response above.

*3) If the designs are not completed why is there a delay when the New Network is due to go live in about 12 months time*

In accordance of section 17(e) of the LGOIMA, we decline to answer as the information requested does not exist.

*4) If there is such a delay what or who are causing the delays in finalising the designs and subsequently the build and opening of the Manukau Interchange*

In accordance of section 17(e) of the LGOIMA, we decline to answer as the information requested does not exist.

*5) If the Manukau Interchange wont be open in time for the South Auckland New Bus Network what contingencies will be in place for the new bus routes that stop in Manukau City Centre.*

Attached is the draft Manukau Interchange Interim Plan for Southern Network Launch which may change following consultation with major stakeholders.

We trust the above information has addressed your request however should you believe that we have not dealt with your request appropriately, you have the right in accordance with section 27(3) of the

LGOIMA to make a complaint to the Office of the Ombudsman and seek an investigation and review in regard to this matter.

If you have any further queries, please contact me, quoting Official Information Request No. CAS-38676-Y7F3B3.

Yours sincerely



John Worth  
Group Manager, Investment & Development

# Manukau Interchange

Interim Plan for Southern  
Network Launch (May 2016)



# Background / Overview

- Manukau identified as major rail / bus interchange location
- Southern New Network to be implemented prior to / at start of construction of the Manukau Bus Interchange
- 15 routes to use the proposed Interchange
- 13 of the 15 routes are planned to terminate at Manukau Interchange
- Interim arrangements needed until bus operations can migrate to new facility (~18 months construction period)

DRAFT

# Interim Proposal

- Interim arrangements needed until bus operations can migrate to new facility (~18 months construction period)

## Rationale for not using site in temporary capacity

- Manukau Interchange already hard pressed to be delivered to budget. Using site while building on it at the same time will mean additional cost and probable delay to the project
- Southern area of site proposed as parking (to mitigate HR staff issues with parking allocation lost)
- Temporary facilities at the site (rather than on street) will be harder to manage from a build perspective – not desirable outcome to be on site until Interchange built
  - easier and better operational and customer offering to provide adequate on-street facilities
- PT Operators and AT Metro preference when opening new facility is to be handed the facility first before opening (4-6 weeks) to ensure drivers and staff have training without interference – this is a best practice approach.
- Above approach endorsed at SMG meeting 15/4 (Mark Lambert agreement)

# Route Details – New Network

SI No	Route No	Description	Through/ Terminate	Peak Freq. (bus per hour)	Peak Freq. (bus per hour)
				2016	2026
1	33	Papakura to Otahuhu	Through	4	6
2	361	Manurewa to Highbrook via Clendon, Manukau and Otara	Through	3	4
3	368	Wiri Industrial - clockwise loop	Terminate	2	4
4	369	Wiri Industrial - anti-clockwise loop	Terminate	2	4
5	313	Onehunga to Manukau via Mangere, western Papatoetoe and Plunket Ave	Terminate	3	4
6	362	Weymouth to Manukau	Terminate	3	4
7	365	Porchester Rd to Manukau	Terminate	4	4
8	366	The Garden to Manukau	Terminate	4	4
9	35	Botany to Manukau via Chapel Rd	Terminate	3	4
10	355	Botany to Manukau Via Flat Bush	Terminate	3	4
11	356	Flatbush - Manukau	Terminate	3	4
12	325	Mangere, Otahuhu, Otara to Manukau	Terminate	4	4
13	352	Panmure to Manukau via Highbrook and East Tamaki	Terminate	3	4
14	353	Botany to Manukau via Preston Rd	Terminate	2	4
15	30	Airport	Terminate	4	6
		<b>Total Bus per hour</b>		<b>47</b>	<b>64</b>

Source : Network Team

# Facility Inventory– New Network (2016)

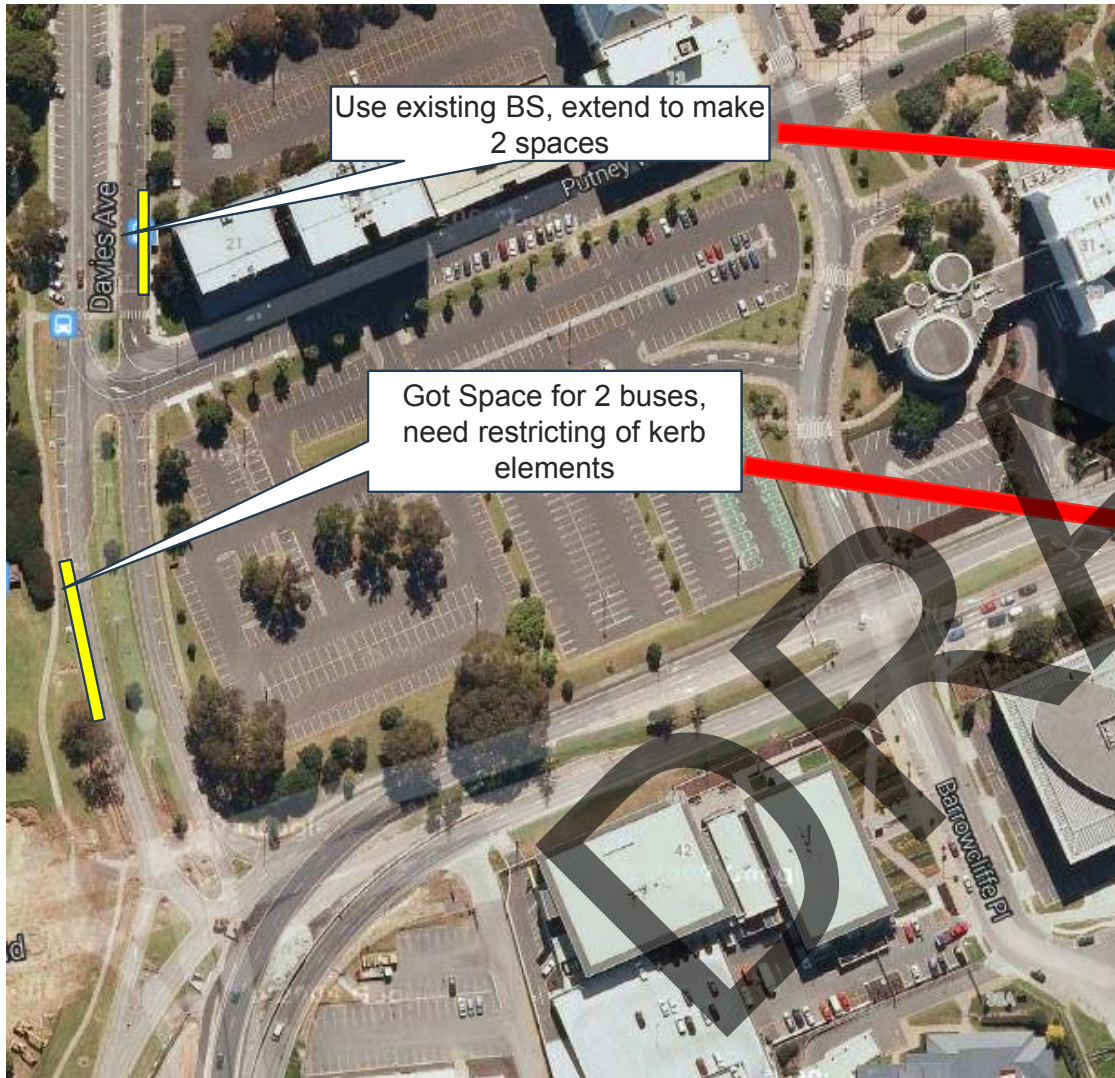
SI No	Route No	Description	Through/ Terminate	Peak Freq. (bus per hour)	Layover (Tentative/ Interchangeable)	Loading Bays
1	33	Papakura to Otahuhu	Through	4	0	2 (Davies Av. Both dir.)
2	361	Manurewa to Highbrook via Clendon, Manukau and Otara	Through	3	0	2 (Davies Av. Both dir.)
3	368	Wiri Industrial - clockwise loop	Terminate	2	1 (Davies Av. Service lane)	1 (Davies Av. One dir.)
4	369	Wiri Industrial - anti-clockwise loop	Terminate	2	Shared with 368	1 (Davies Av. One dir.)
5	313	Onehunga to Manukau via Mangere, western Papatoetoe and Plunket Ave	Terminate	3	1 (Ronwood Av.)	2 (Davies Av. Both dir.) & LO
6	362	Weymouth to Manukau	Terminate	3	1 (Putney Way)	1 (Putney Way)
7	365	Porchester Rd to Manukau	Terminate	4	1 (Ronwood Av.)	2 (Davies Av. Both dir.) & LO
8	366	The Garden to Manukau	Terminate	4	1 (Putney Way)	1 (Putney Way)
9	35	Botany to Manukau via Chapel Rd	Terminate	3	1 (Putney Way)	1 (Putney Way)
10	355	Botany to Manukau Via Flat Bush	Terminate	3	1 (Putney Way)	1 (Putney Way)
11	356	Flatbush - Manukau	Terminate	3	Shared with 355	Shared with 355
12	325	Mangere, Otahuhu, Otara to Manukau	Terminate	4	1 (Putney Way)	1 (Putney Way)
13	352	Panmure to Manukau via Highbrook and East Tamaki	Terminate	3	1 (Rainbows End)	2 (Davies Av. Both dir.)
14	353	Botany to Manukua via Preston Rd	Terminate	2	1 (Rainbows End)	2 (Davies Av. Both dir.)
15	30	Airport	Terminate	4	1 (Rainbows End)	2 (Davies Av. Both dir.)
		<b>Total</b>		<b>47</b>	<b>11</b>	

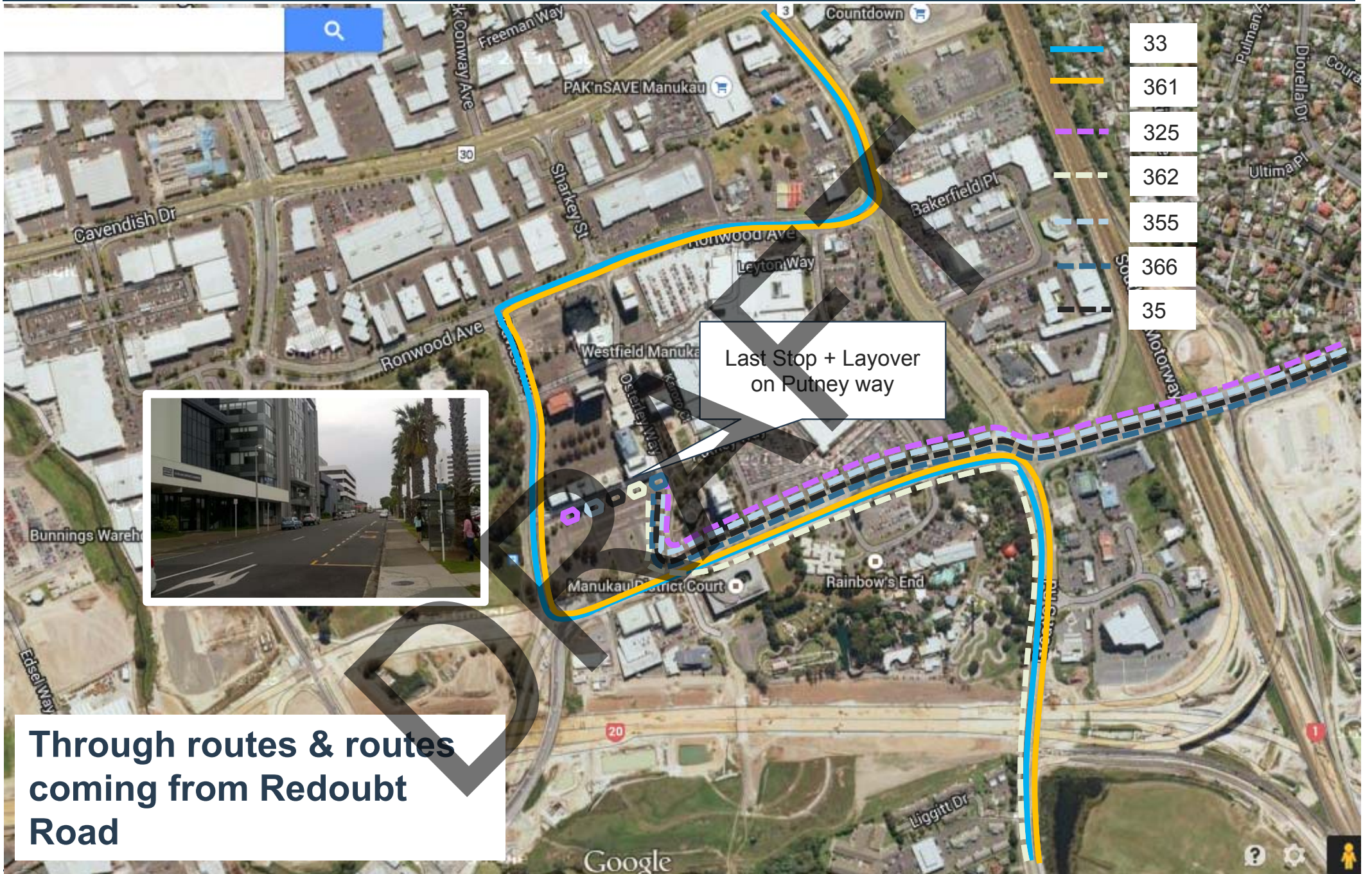
Source : Network Team

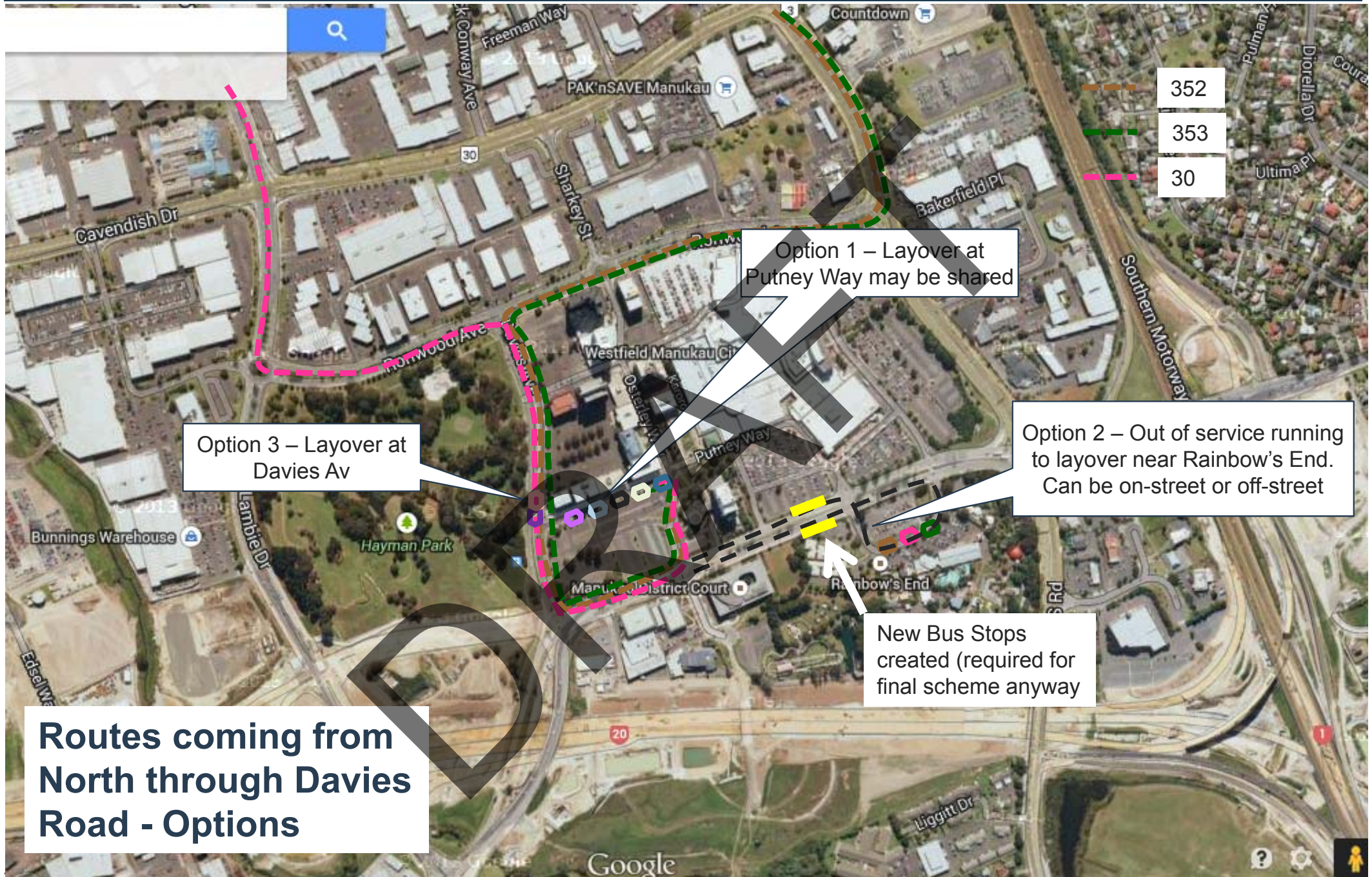


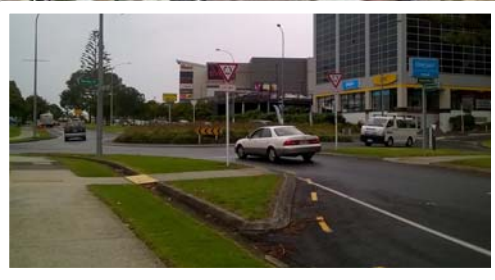
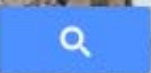


# Proposed Bus stops on Davies Ave







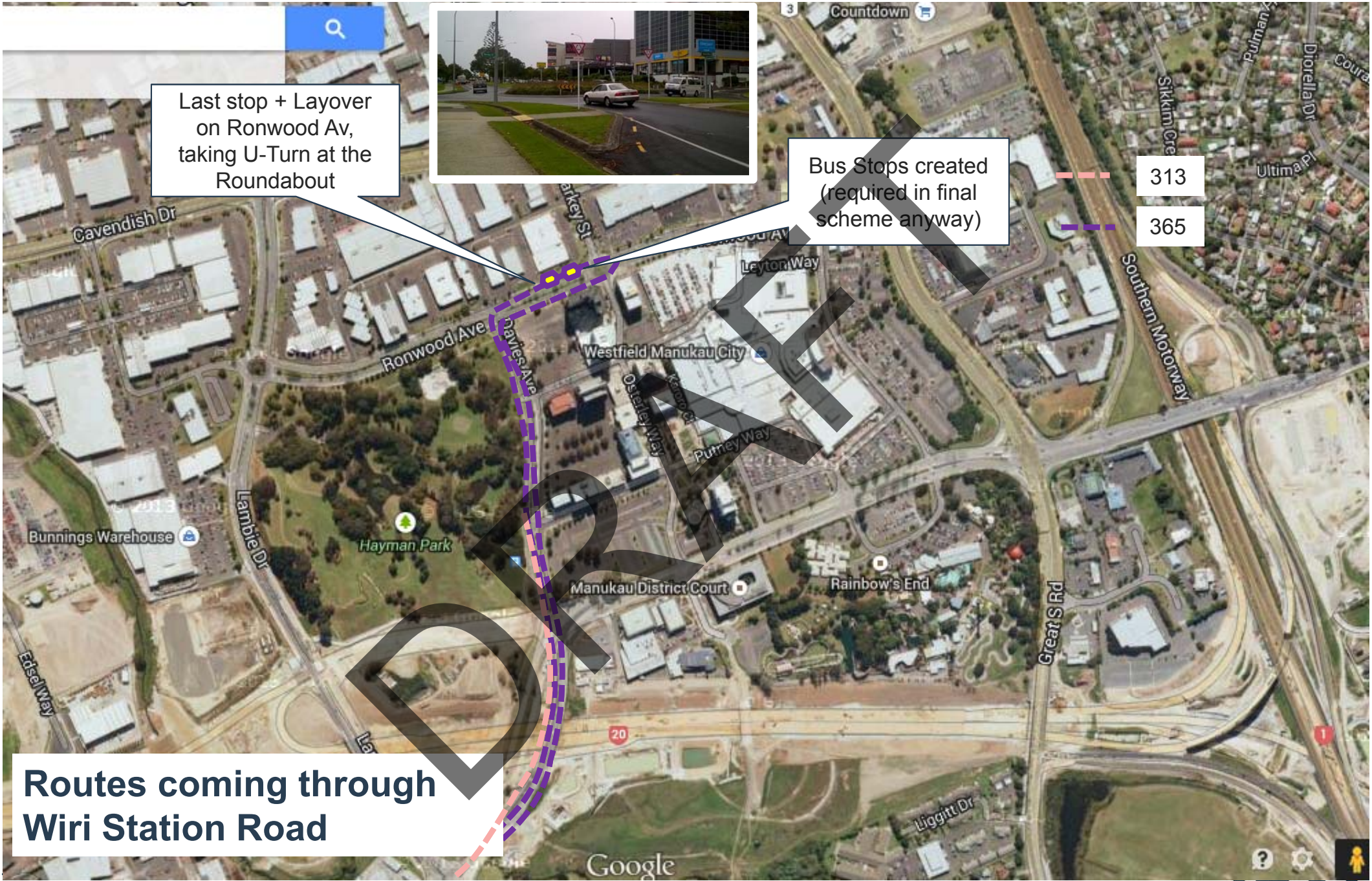
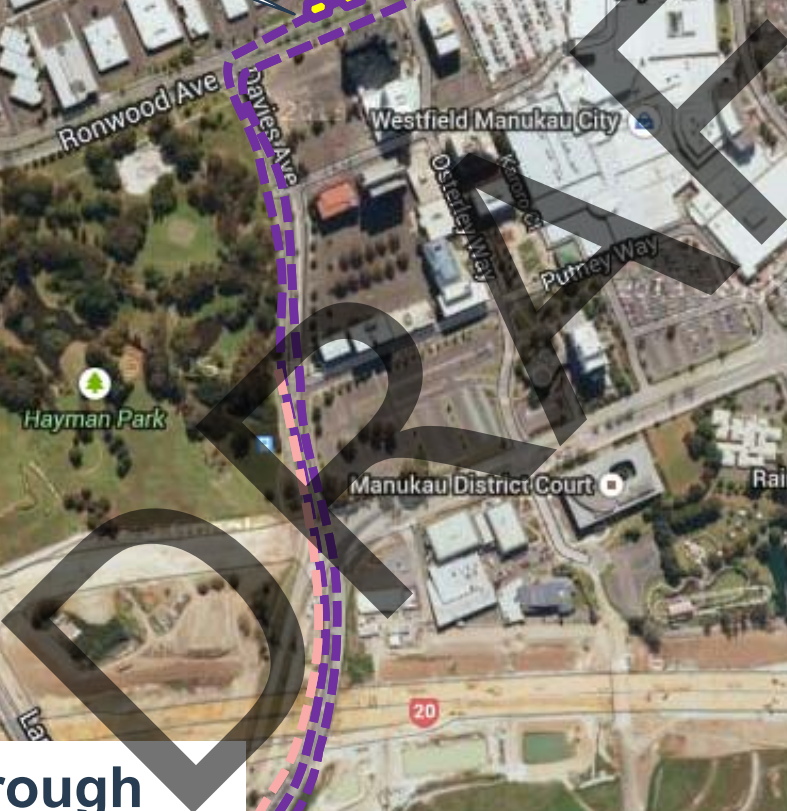


Last stop + Layover on Ronwood Av, taking U-Turn at the Roundabout

Bus Stops created (required in final scheme anyway)

313  
365

Routes coming through Wiri Station Road





Last stop + Layover on Davies Av.

368

369

## Wiri Industrial – Clockwise & Anti-Clockwise



## Interim Coach Options

# Next Steps / Risks

## Next Steps:

- Interim layover options to be further analysed and finalised
- Detailed design commences for interim proposal – July / Aug
- Design consultation – Aug / Sept
- TCC approval – Oct / Nov
- Construction Drawings / shelter orders etc – Oct / Nov
- Construction temporary on-street facilities – Jan / Feb 2016
- Go live temporary on-street facilities – May 2016

## Risks to N Network 'Go Live'

- Design/consult/construction process for temporary infrastructure delayed
- Budget