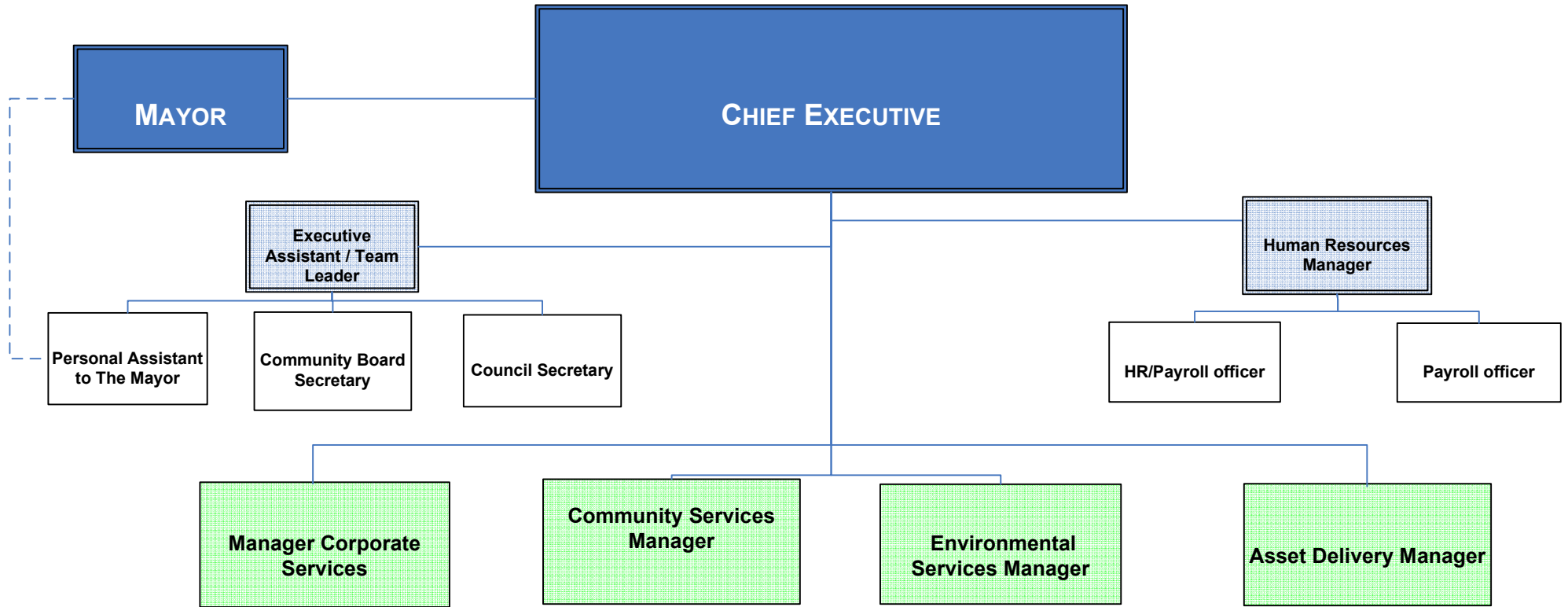
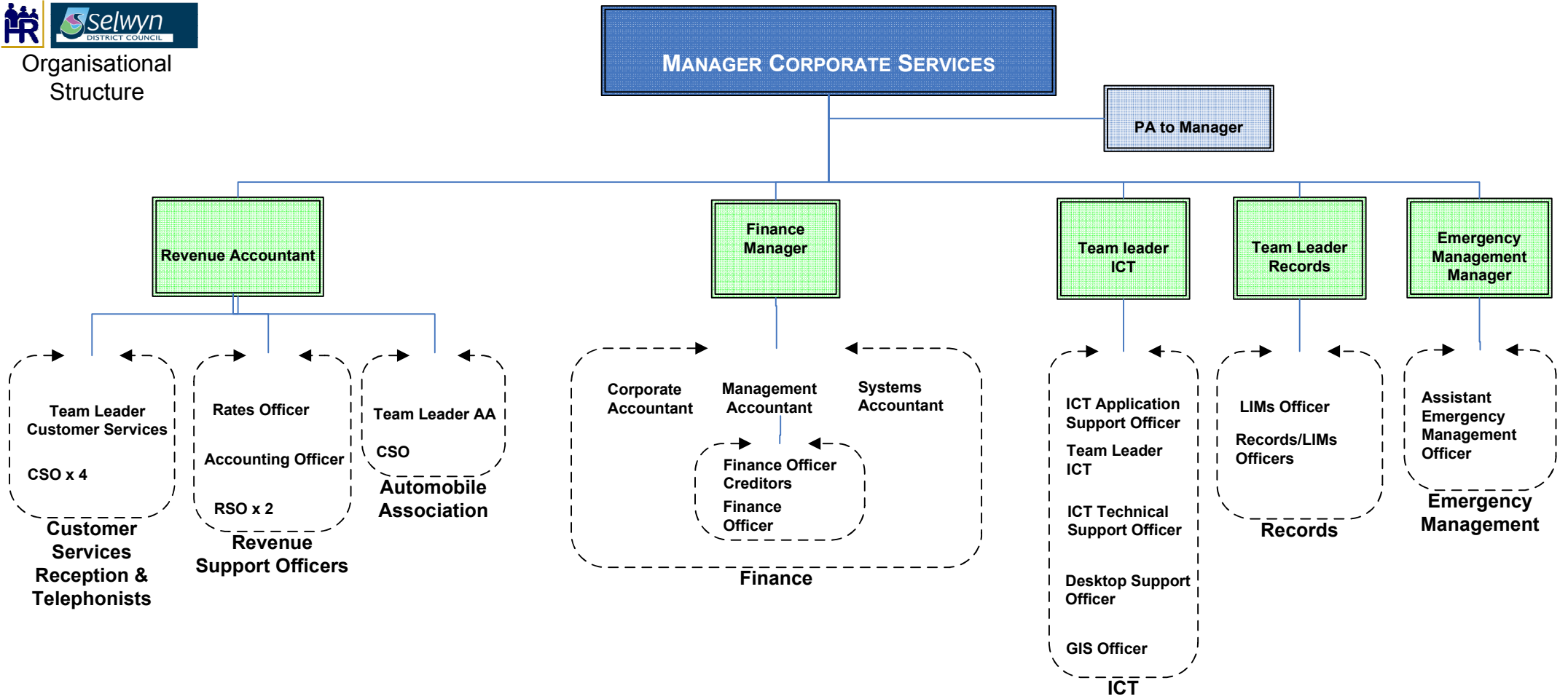


# Organisational Structure



Representatives from each unit contribute to this "virtual team" - team members may vary depending on technical requirement





# Asset Delivery Unit

**ASSET DELIVERY MANAGER**

**PA – Asset Delivery Manager**

**Strategic Asset Manager**

**Service Delivery**

Asset Management  
CSO- Assets  
CSO- Assets  
**Asset Administration**

**Solid Waste Manager**

**Team Leader Transportation**

**Team Leader Utilities**

**Team Leader Property & Reserves**

**TEAM LEADER POSITIONS ARE AN ADDITIONAL FUNCTION OF EXISTING STAFF**

Asset Manager Open Space & Property  
Asset Manager Projects  
Asset Manager Transportation  
Asset Manager Utilities  
**Strategic Asset Management**

AM Coordinator  
**Asset Management**

Water Technician  
Water Races & Land Drainage  
Utilities Officer  
**Asset Management**

AM Property Services Coordinator  
Property Coordinator/Administrator  
Property Disposal Coordinator  
**Asset Management**

Roading Engineer  
Design Engineer  
Roading Engineer  
**Asset Engineering**

Utilities Engineer  
Water and Wastewater Engineer  
Stormwater Engineer  
Asset Systems Officer  
**Asset Engineering**

Landscape Architect  
Asset Engineer - Reserves  
**Asset Engineering**

Contract Supervisor  
Contract Supervisor  
**Contract Supervision**

Contract Supervisor Sewer  
Contract Supervisor Water  
**Contract Supervision**

Reserves Officer  
Community Projects Coordinator  
**Contract Supervision**

Assets Administrator - Roading  
Road Safety Coordinator  
Schools Travelwise Coordinator  
**Admin Staff**

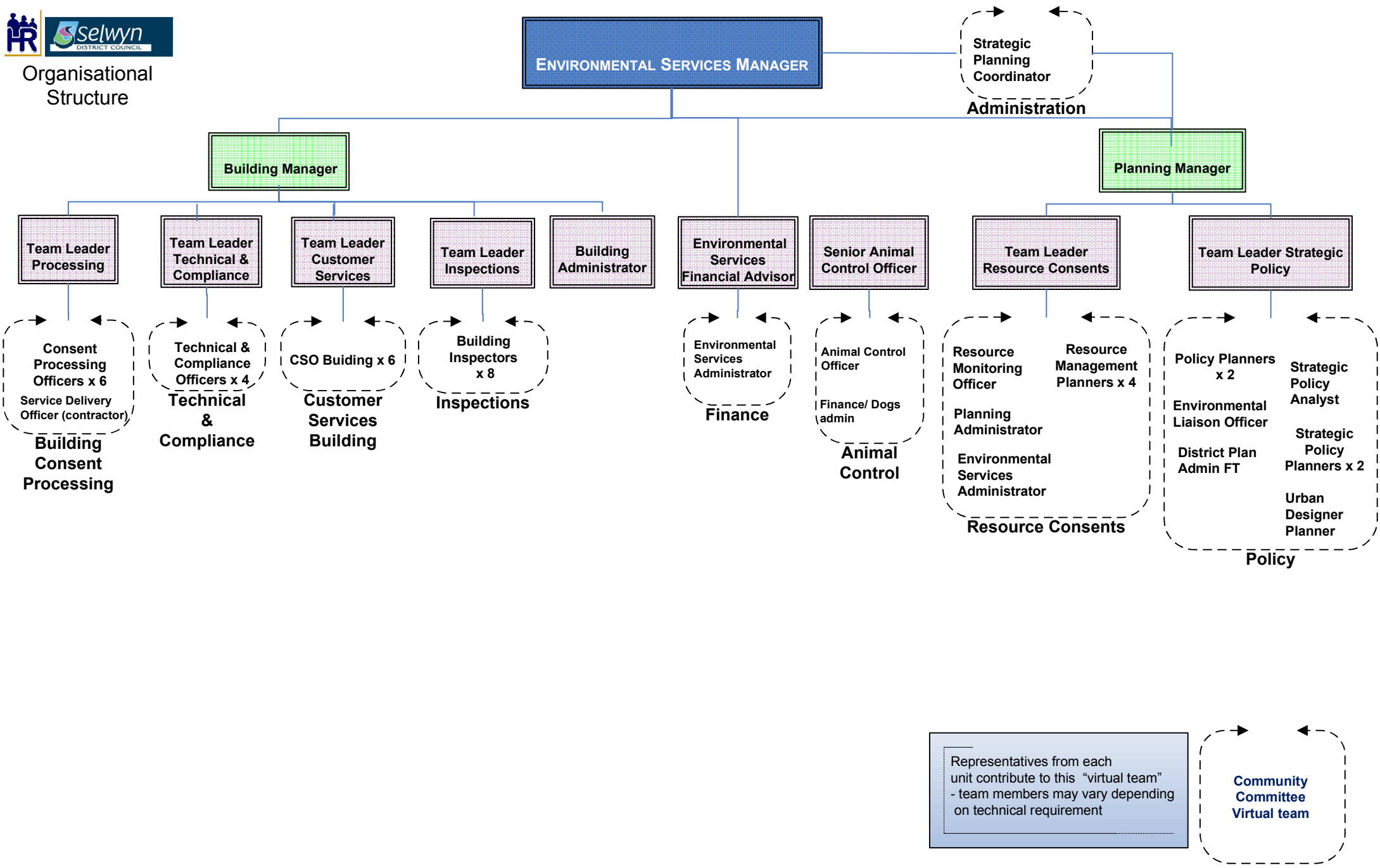
Assets Administrator Utilities  
**Admin Staff**

Assets Administrator - Reserves  
**Admin Staff**

Representatives from each unit contribute to this "virtual team" - team members may vary depending on technical requirement

**Community Committee Virtual team**

**Community Committee Virtual Team**



Representatives from each unit contribute to this "virtual team" - team members may vary depending on technical requirement



Organisational Structure

