



**R** AUCKLAND COUNCIL  
APPROVED PLANS FOR:

JOB REF No: R/LUC/2016/2140  
DATE: 24 JUNE 2016  
1 of 9

|              |                    |
|--------------|--------------------|
| <b>Scale</b> | <b>Project No.</b> |
| 1:500 @ A3   | 1208               |
| <b>Rev</b>   | <b>Description</b> |
| -            | -                  |
| -            | -                  |
| -            | First Issue        |
|              | 25/05/16           |



Park and Playground Solutions Limited

54 Norfolk Street, Ponsonby  
Auckland

p 09 361 1099  
m 021 764 250  
e tina@parkcentral.co.nz  
w www.parkcentral.co.nz

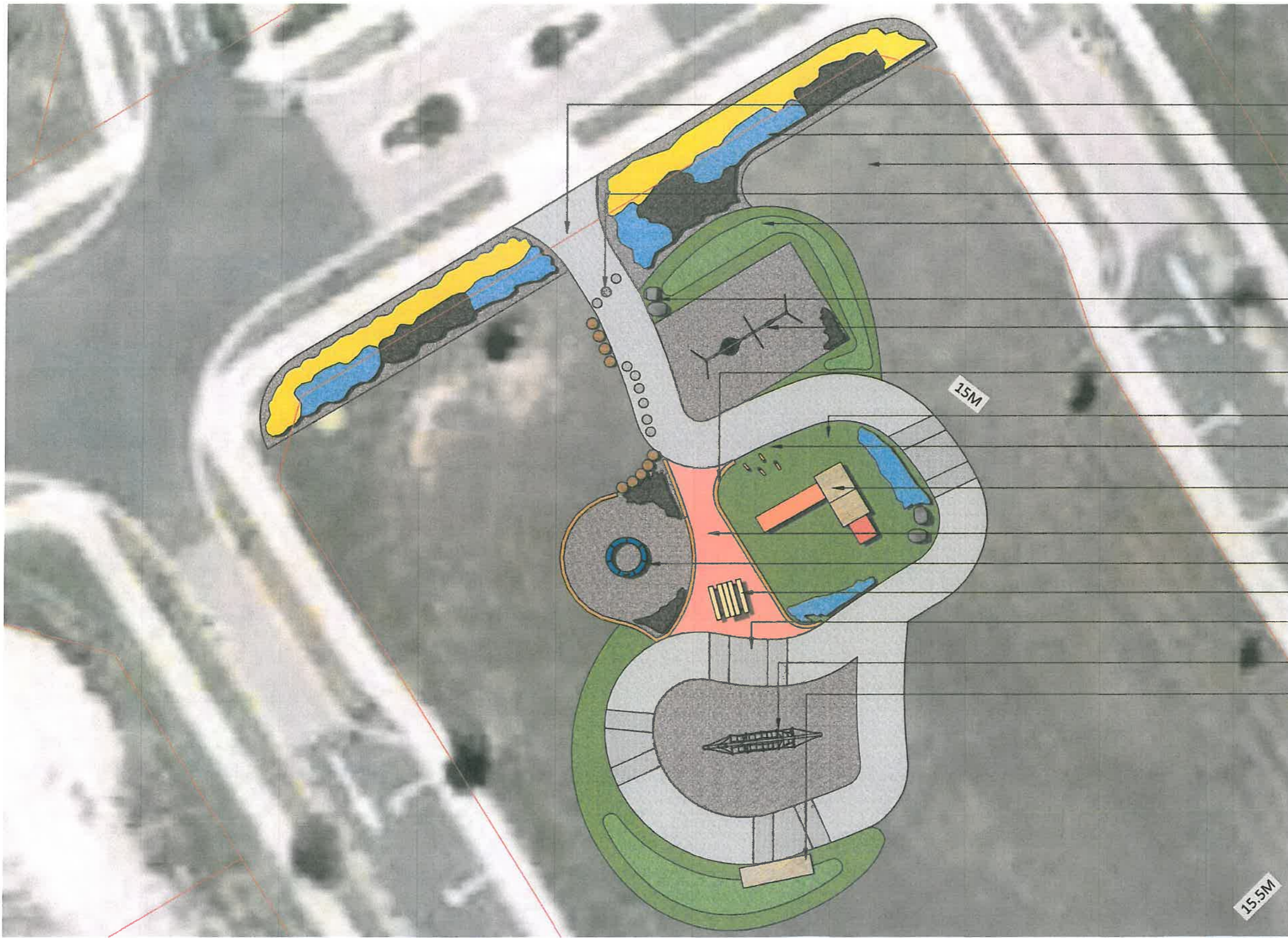
14 Norrie Road, Raglan

m 021 101 4988  
e rich@richlandscapes.co.nz  
w www.richlandscapes.co.nz

DETAIL 1-6 Site Context Plan

# Milano Boulevarde, Karaka





- Contours
- Property Boundaries
- Concrete Pathway
- Landscape Planting
- Lawn Area
- Stepping Stones
- Mounds 600mm high at fronts and built up to 1 m at the back
- Feature Rocks
- 2 Bay Swing
- Timber edging
- Cushion fall surface
- Stills
- Slide
- Coloured Concrete
- Supernova Module
- Table
- Bumps no higher than 300mm high
- Module
- Seat

**R** AUCKLAND COUNCIL  
APPROVED PLANS FOR:

DATE: 24 JUNE 2016  
2 of 9

|       |             |             |      |
|-------|-------------|-------------|------|
| Scale | 1:200 @ A3  | Project No. | 1209 |
| Rev   | Description | Date        |      |
| -     | -           | -           | -    |
| -     | First Issue | 23/05/16    |      |

**Park and Playground Solutions Limited**

54 Norfolk Street, Ponsonby  
Auckland  
p 09 381 1099  
m 021 764 250  
e [line@parkcentral.co.nz](mailto:line@parkcentral.co.nz)  
w [www.parkcentral.co.nz](http://www.parkcentral.co.nz)

**RICH LANDSCAPES**

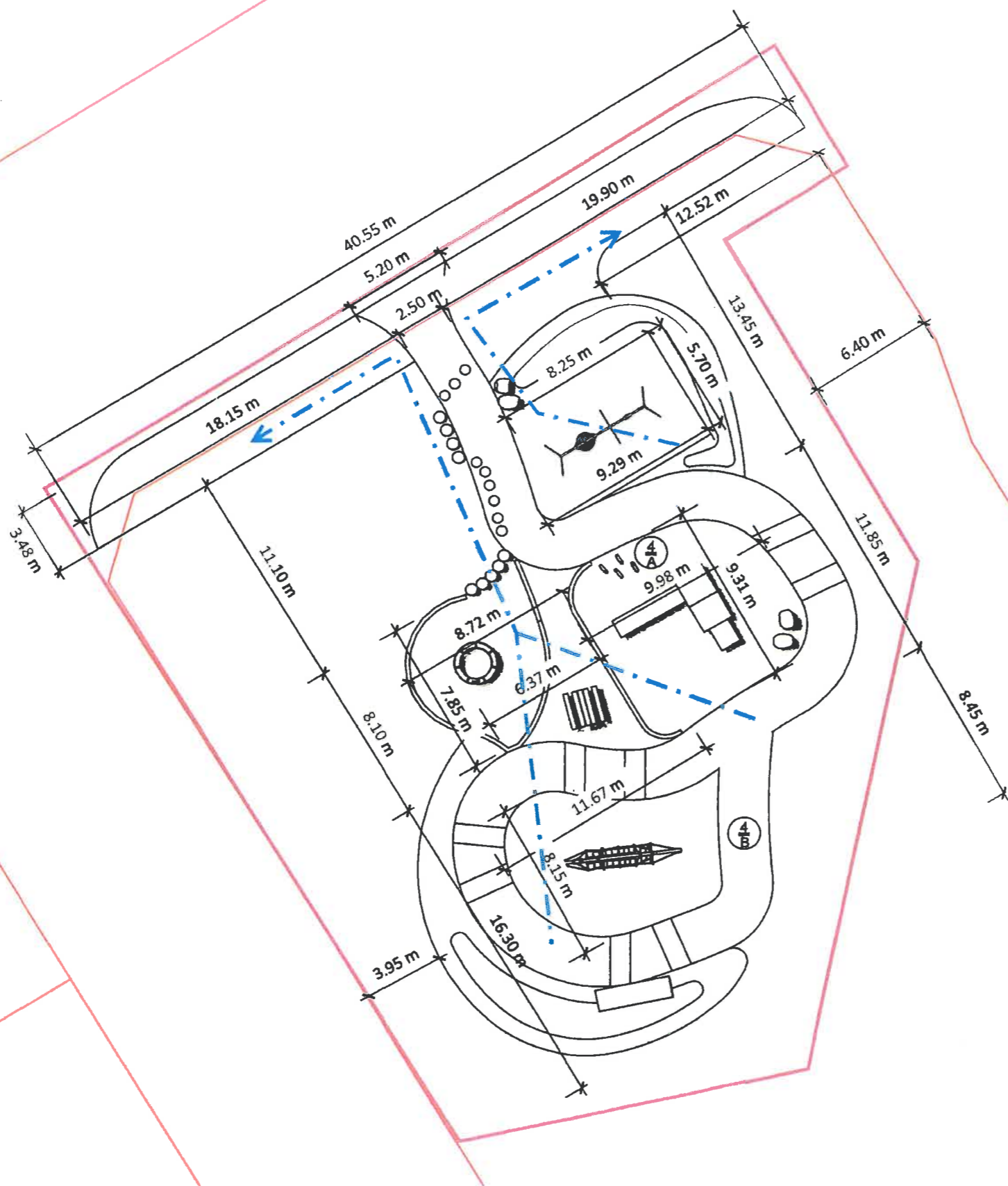
14 Norrie Road, Reglan  
m 021 101 4988  
e [rich@richlandscapes.co.nz](mailto:rich@richlandscapes.co.nz)  
w [www.richlandscapes.co.nz](http://www.richlandscapes.co.nz)



- Drainage
- Site extent
- Property Boundaries

Refer to Detail A page 6

Refer to Detail B page 6



|                                    |   |
|------------------------------------|---|
| R                                  | AUCKLAND COUNCIL<br>APPROVED PLANS FOR: |
| JOB REF No: <u>R/LUC/2016/2190</u> |   |
| DATE: <u>24 JUNE 2016</u>          |   |
| <u>3 of 9</u>                      |   |

|                            |                            |
|----------------------------|----------------------------|
| <b>Scale</b><br>1:250 @ A3 | <b>Project No.</b><br>1209 |
| <b>Rev</b>                 | <b>Description</b>         |
| -                          | -                          |
| -                          | -                          |
| -                          | First Issue                |
|                            | 28/05/16                   |

Park and Playground Solutions Limited

54 Norfolk Street, Ponsorby  
Auckland

p 09 361 1099  
m 021 764 250  
e [line@parkcentral.co.nz](mailto:line@parkcentral.co.nz)  
w [www.parkcentral.co.nz](http://www.parkcentral.co.nz)

RICH LANDSCAPES

14 Norris Road, Raglan

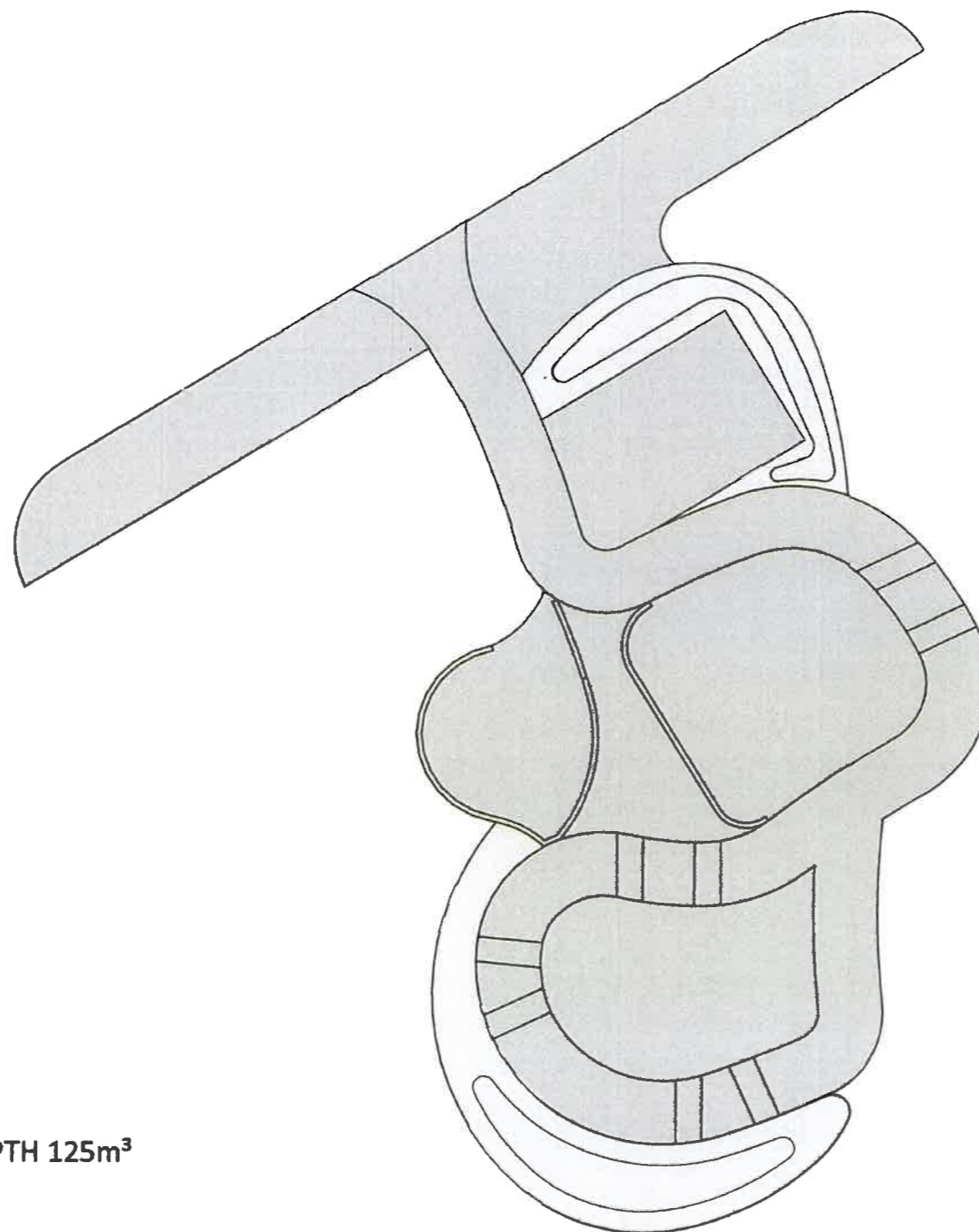
m 021 101 4988  
e [rich@richlandscapes.co.nz](mailto:rich@richlandscapes.co.nz)  
w [www.richlandscapes.co.nz](http://www.richlandscapes.co.nz)



Legend

FILL

CUT



|  |   |
|--|---|
| R  | AUCKLAND COUNCIL<br>APPROVED PLANS FOR: |
| JOB REF No: <u>R/LUC/2016/2190</u>         |   |
| DATE: <u>24 JUNE 2016</u><br><u>4 of 9</u> |   |

**BULK EARTHWORKS INSITU VOLUMES**  
 TOPSOIL CUT (625m<sup>2</sup>) @ 200mm IN DEPTH 125m<sup>3</sup>  
 SUBGRADE CUT AND FILL 64m<sup>3</sup>  
 BASECOURSE FILL 58m<sup>3</sup>  
 TOPSOIL FILL FOR LAWNS @ MIN 200mm IN DEPTH  
 125m<sup>3</sup>

|                            |                            |
|----------------------------|----------------------------|
| <b>Scale</b><br>1:250 @ A3 | <b>Project No.</b><br>1209 |
| <b>Rev</b>                 | <b>Description</b>         |
| -                          | -                          |
| -                          | -                          |
| -                          | First Issue                |
|                            | 25/05/16                   |



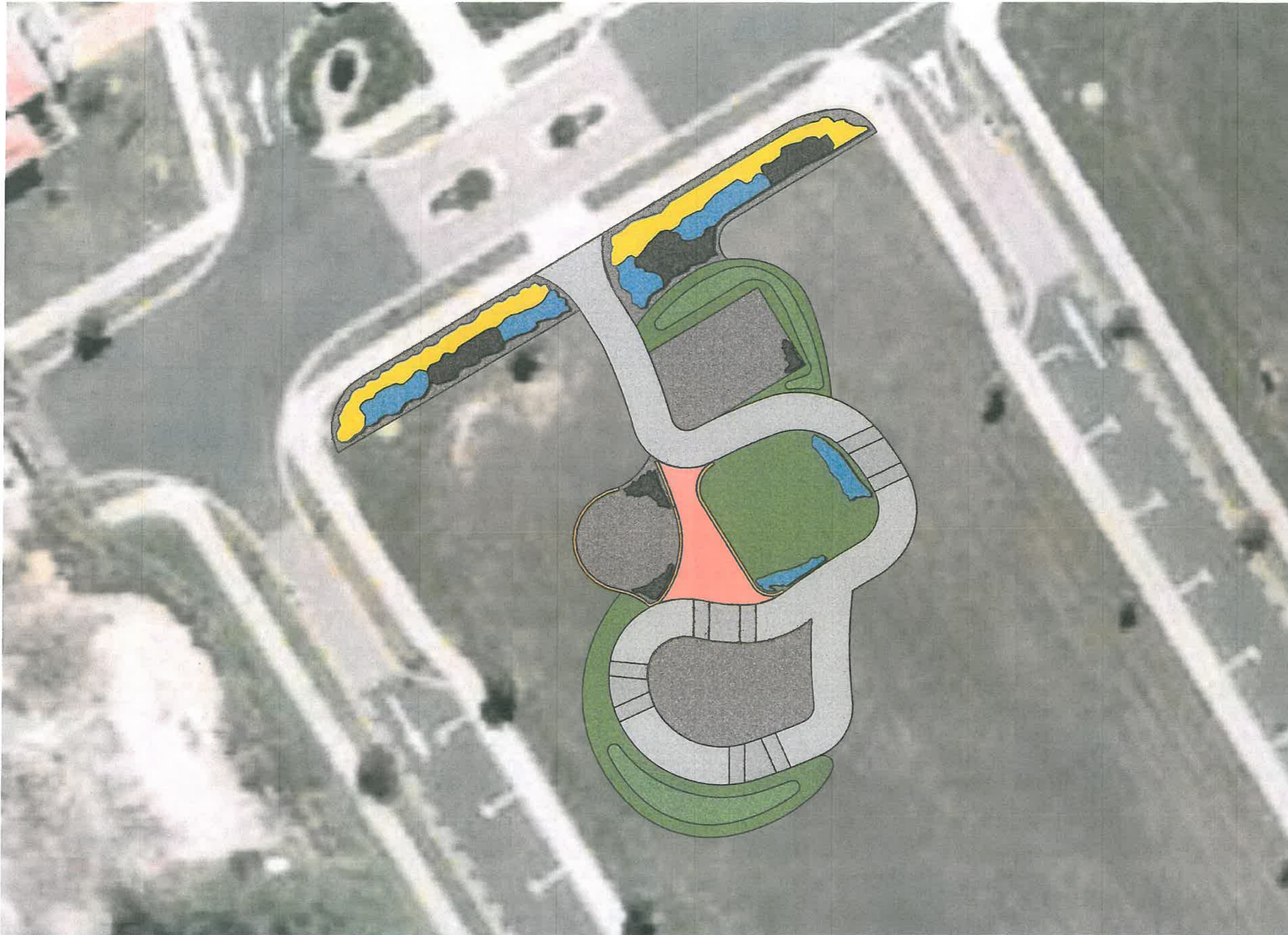
Park and Playground Solutions Limited

54 Norfolk Street, Ponsonby  
Auckland

p 09 361 1099  
m 021 764 250  
e [tina@parkcentral.co.nz](mailto:tina@parkcentral.co.nz)  
w [www.parkcentral.co.nz](http://www.parkcentral.co.nz)

14 Norrie Road, Raglan

m 021 101 4988  
e [rich@richlandscapes.co.nz](mailto:rich@richlandscapes.co.nz)  
w [www.richlandscapes.co.nz](http://www.richlandscapes.co.nz)



**Legend**

- Concrete pathway in centre to be Peter Fell 322 Terracotta oxide
- Concrete path standard design slab with 4% Black oxide
- Planting specimen: Oi Oi
- Planting specimen: Carex grass
- Planting specimen: Dwarf flax



|                                    |   |
|------------------------------------|---|
| <b>R</b>                           | AUCKLAND COUNCIL<br>APPROVED PLANS FOR: |
| JOB REF No: <u>R/LUC/2016/2140</u> |   |
| DATE: <u>29 JUNE 2016</u>          |   |
| <u>5 of 9</u>                      |   |

|              |                    |             |
|--------------|--------------------|-------------|
| <b>Scale</b> | <b>Project No.</b> |             |
| 1:250 @ A3   | 1209               |             |
| <b>Rev</b>   | <b>Description</b> | <b>Date</b> |
| -            | -                  | -           |
| -            | -                  | -           |
| -            | First Issue        | 25/05/16    |



Park and Playground Solutions Limited

54 Norfolk Street, Ponsby  
Auckland

p 09 361 1099  
m 021 764 250  
e [info@parkcentral.co.nz](mailto:info@parkcentral.co.nz)  
w [www.parkcentral.co.nz](http://www.parkcentral.co.nz)



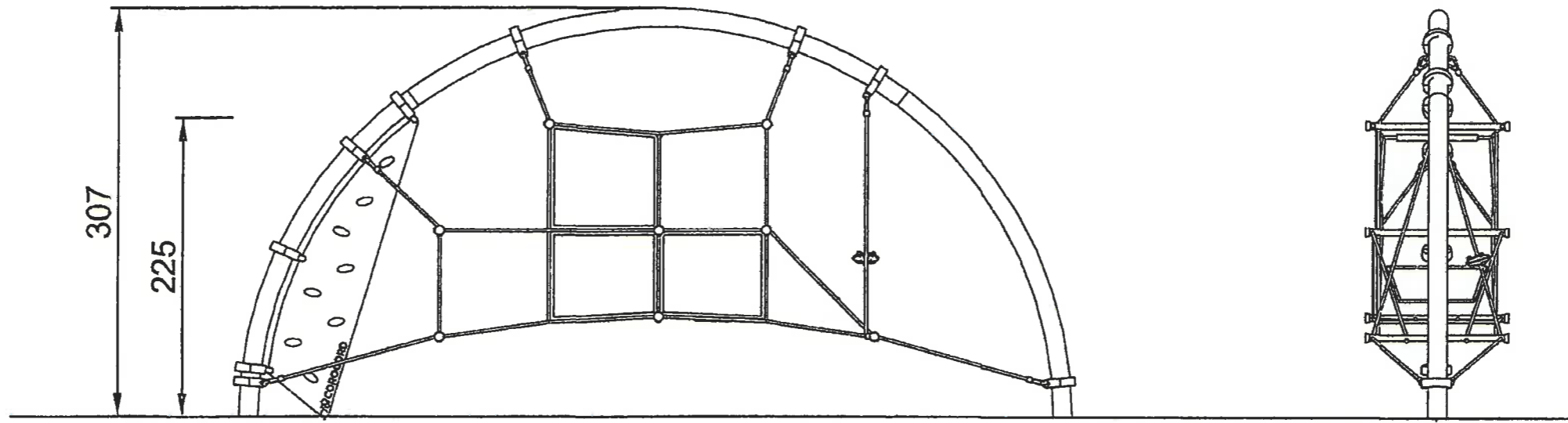
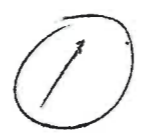
RICH LANDSCAPES

14 Norrie Road, Raglan


m 021 101 4988  
e [rich@richlandscapes.co.nz](mailto:rich@richlandscapes.co.nz)  
w [www.richlandscapes.co.nz](http://www.richlandscapes.co.nz)

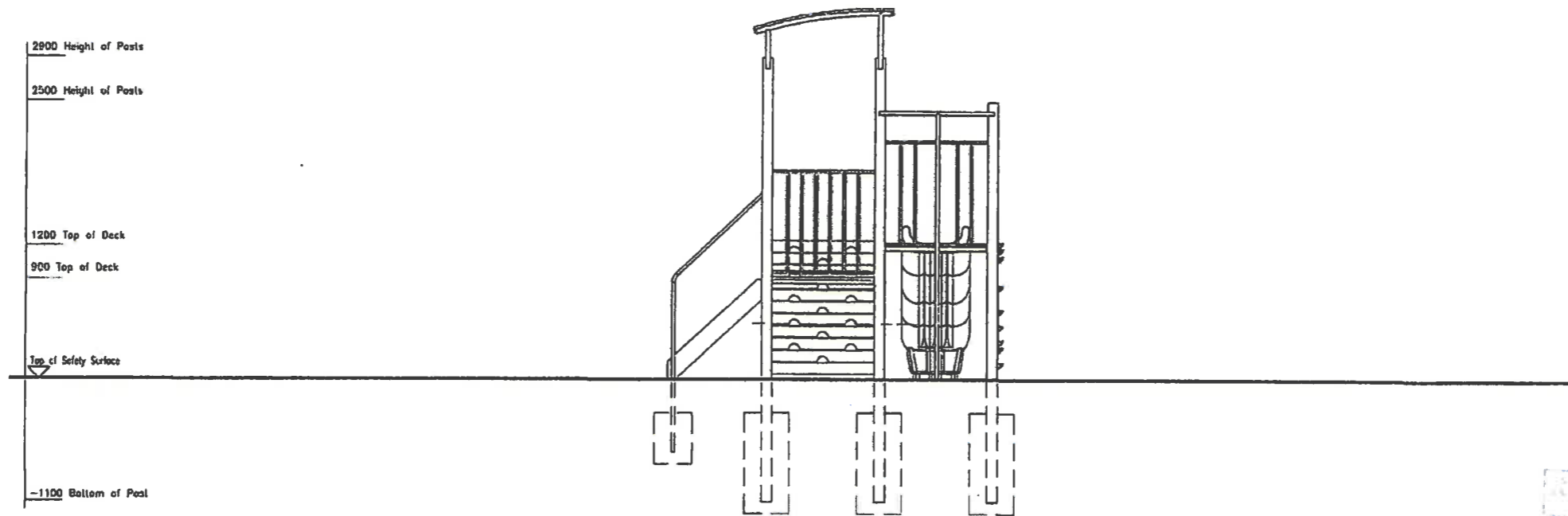
DETAIL 5-6 Planting Plan and Concrete Colour Legend

# Milano Boulevarde, Karaka



COR8220  
1:100

|   |   |
|---|---|
|  | AUCKLAND COUNCIL<br>APPROVED PLANS FOR: |
| JOB REF No:   | R/CUC/2016/2190                         |
| DATE:   | 29 JUNE 2016                            |
|   | 6 of 9                                  |



AUCKLAND COUNCIL  
APPROVED PLANS FOR:  
JOB No: R/LUC/2016/2140  
DATE: 24 JUNE 2016  
7 of 9

[www.playgrounds.co.nz](http://www.playgrounds.co.nz)

Version 1

CONFIDENTIAL © Playground People Ltd 2010. All rights reserved. This document is confidential to, and all intellectual property rights in this document are owned by, Playground People Ltd and may not be reproduced or disclosed to any third party without the prior written consent of Playground People Ltd




**JT 558**

Playground People Ltd  
The Smarter way to Play

2

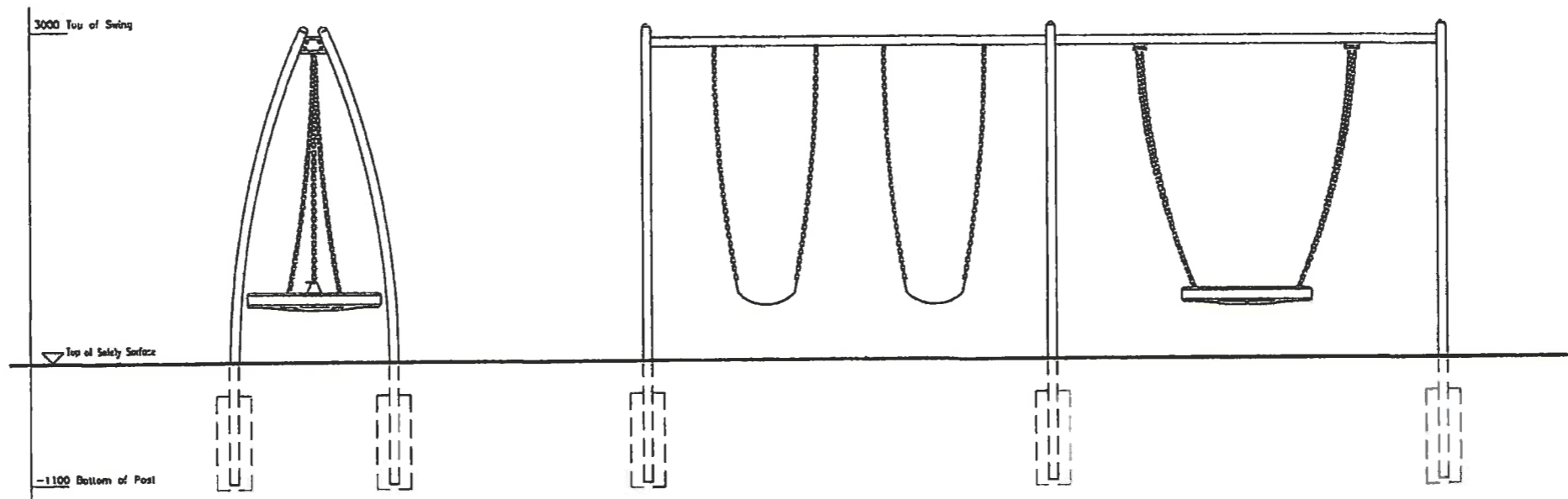



GXY916

|                                    |   |   |
|------------------------------------|---|---|
| R                                  |  | AUCKLAND COUNCIL<br>APPROVED PLANS FOR: |
| JOB REF No: <u>R/LUC/2016/2190</u> |   |   |
| DATE: <u>24 JUNE 2016</u>          |   |   |
| <u>8 of 9</u>                      |   |   |



2 Bay Ace UFO (4)



|   |   |
|---|---|
|  | AUCKLAND COUNCIL<br>APPROVED PLANS FOR: |
| JOB REF No:   | R/LUC/2016/2190                         |
| DATE:   | 24 JUNE 2016                            |
|   | 9 of 9                                  |