

Roll Growth Analysis for Silverdale School (1482), January 2012

Purpose

Silverdale School is a full primary school located in Silverdale, Auckland City (formerly in the Rodney District). The school has requested that the Ministry approve funding for eight roll growth classrooms. This is the final instalment that was agreed upon in the new schools project following the relocation of the school in 2007 to its current location.

This report will also determine whether the Ministry needs to discuss with the school the likelihood of decapitation as per the recommendation in the Hibiscus Coast Area Strategy.

The following report will consider factors, including the school's historical roll trend, council planned developments and underlying population to identify the reason(s) for roll growth to assess the needs of additional property provision in the school.

Student Distribution

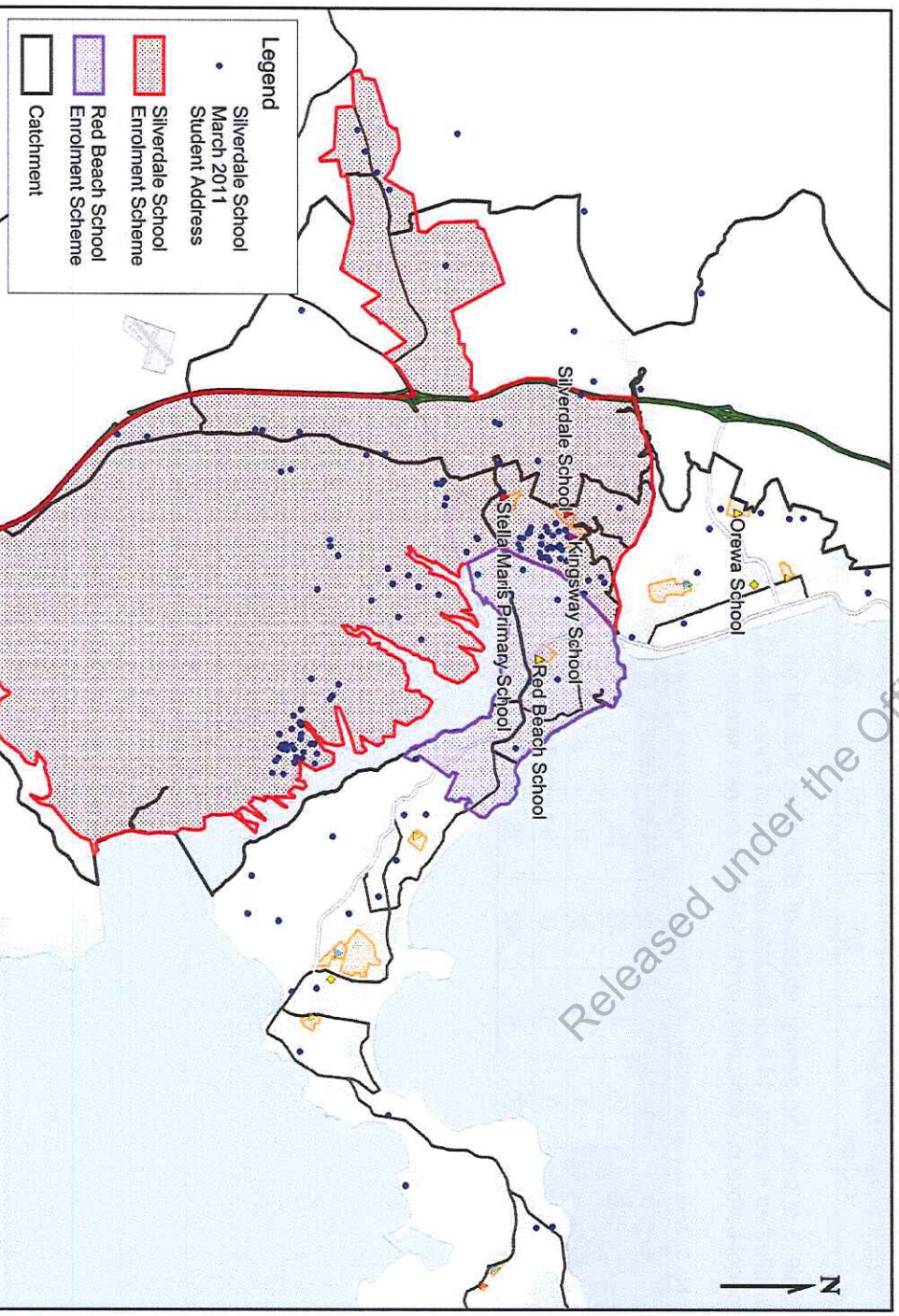
Figure 1 shows the student distribution (March 2011), network of schools, and catchment for Silverdale School.

For the purposes of this report the network of schools includes Kingsway School (Year 1-8 only), Orewa School, Red Beach School and Stella Maris Primary School as well as Silverdale School. Silverdale School and Red Beach School are the only two schools in the network with an enrolment scheme. Orewa School has recently abandoned its enrolment scheme.

The catchment has been defined by the Census Area Units (CAUs) of Red Beach, Silverdale North, and Silverdale South. These are the CAUs that best match Silverdale School's enrolment scheme.

The student distribution is relatively condensed within the school's enrolment scheme however, a number of students do attend the school whilst residing out of zone.

Figure 1: Student Distribution, Network of Schools, and Catchment for Silverdale School



Sourced from LINZ data Crown and Canticlaw. Copyright reserved. Census boundaries from Statistics NZ.

Background

Table 1 shows the background information for Silverdale School and its surrounding network of schools.

The school was at 91% of its current capacity with an October 2011 roll of 310 students creating a surplus of 29 student spaces.

The network was at 85% of its current capacity with an October 2011 roll of 2,189 students creating a surplus of 389 student spaces.

Table 1: Background information

| Summary | School's status | Network's Status |
|---------------------------|-----------------|------------------|
| Current TSS Count | 14 | 97 |
| Current Capacity (approx) | 339 | 2,578 |
| October 2011 Roll | 310 | 2,189 |
| Surplus/ Deficit | 29 | 389 |
| % Utilisation | 91% | 85% |

Roll Assessment

Table 2 shows the historical, March, July and October roll of Silverdale School between 2007 and 2011. The roll of the school has gradually increased over the past five years following its relocation in 2007.

The roll generally increased by 10-20 students during the year between 2007 and 2010 but increased by 45 during the 2011 school year.

Table 2: Historical March, July and October roll

| Historical Roll | 2007 | 2008 | 2009 | 2010 | 2011 |
|----------------------------------|------|------|------|------|------|
| March | 154 | 191 | 202 | 244 | 265 |
| July | 165 | 202 | 223 | 260 | 288 |
| October | 174 | 202 | 231 | 273 | 310 |
| Growth between March and October | 20 | 11 | 29 | 29 | 45 |

_prov

=Estimate

Table 3 shows the zoning status of Silverdale School as of March 2011. Despite the majority of students being enrolled as in zone, 14% of the total roll is out of zone. The students coded as 'not applicable' were likely attending the school before the relocation to the school's current location.

Table 3: Zoning status of Silverdale School's roll by year level, 1st March 2011, prov

| March | Year 1 | Year 2 | Year 3 | Year 4 | Year 5 | Year 6 | Year 7 | Year 8 | Total |
|----------------|--------|--------|--------|--------|--------|--------|--------|--------|-------|
| In zone | 16 | 42 | 33 | 26 | 11 | 14 | 9 | 6 | 157 |
| Out of zone | 4 | 5 | 9 | 9 | 3 | 1 | 2 | 5 | 38 |
| Not applicable | 0 | 0 | 0 | 3 | 21 | 19 | 17 | 10 | 70 |
| Total | 20 | 47 | 42 | 38 | 35 | 34 | 28 | 21 | 265 |

Future Roll Assessment

This section assesses both qualitative and quantitative data based on Statistics New Zealand's (SNZ) underlying population projections, building consents and local council's development plans within the school's catchment.

Ministry Projections

1) Roll projection based on historical retention rate

Table 4 shows Silverdale School's historical October rolls (2007-2011) and the projected roll for 2012-2013. The predicted rolls are not regarded as conclusive projections; rather, they constitute a scenario based purely on the school's historical enrolment pattern.

The roll of the school has been increasing since its relocation in 2007. It is projected that the roll will continue to increase in 2012 and 2013. However, the increase over the next two years is considered to be understated as population growth has not been taken into the calculation of these projections.

Table 4: Silverdale School's historical October peak rolls (2007-2011) and projected peak rolls (2012-2013) by year level

| October | Year 1 | Year 2 | Year 3 | Year 4 | Year 5 | Year 6 | Year 7 | Year 8 | Total |
|-----------|--------|--------|--------|--------|--------|--------|--------|--------|-------|
| 2007 | 43 | 22 | 20 | 27 | 11 | 17 | 22 | 12 | 174 |
| 2008 | 45 | 36 | 23 | 21 | 34 | 13 | 16 | 14 | 202 |
| 2009 | 47 | 41 | 34 | 25 | 24 | 34 | 10 | 16 | 231 |
| 2010 | 57 | 43 | 40 | 36 | 29 | 24 | 29 | 15 | 273 |
| 2011 | 48 | 48 | 45 | 41 | 43 | 32 | 26 | 27 | 310 |
| 2012_proj | 34 | 44 | 47 | 44 | 45 | 51 | 29 | 27 | 321 |
| 2013_proj | 32 | 31 | 43 | 46 | 48 | 53 | 46 | 30 | 329 |

Note: The projected rolls are calculated using weighted historical retention rates only.

Schools Projections

"Our peak roll for the last five years (since at this site) have indicated steady growth and that this has been retained into each new year and continued to consolidate and expand. We do not see this being any different over the next few years. It is more probable that we will experience an exponential growth as subdivisions further open up. Both our contacts within the council and within the real estate industry inform us of building consents being issued very regularly now. Remember too, that this growth has occurred during a period of very real economic downturn so as this situation eases we will have a corresponding leap in our roll."

| | |
|------------------|--------------|
| 2014 (predicted) | 500 students |
| 2013 (predicted) | 420 students |
| 2012 (predicted) | 360 students |
| 2011 | 320 students |
| 2010 | 283 students |
| 2009 | 246 students |
| 2008 | 213 students |
| 2007 | 189 students |

The 'actual' rolls are different from Ministry rolls as they are likely based on December, not October.

As growth and development is occurring at a fast pace in the Silverdale area and taking into account that Silverdale School was relocated to accommodate this growth, the school's projections are considered to be more viable in comparison to Ministry projections that are based only on retention rates.

Roll projections provided by the school will be used in the rest of this report.

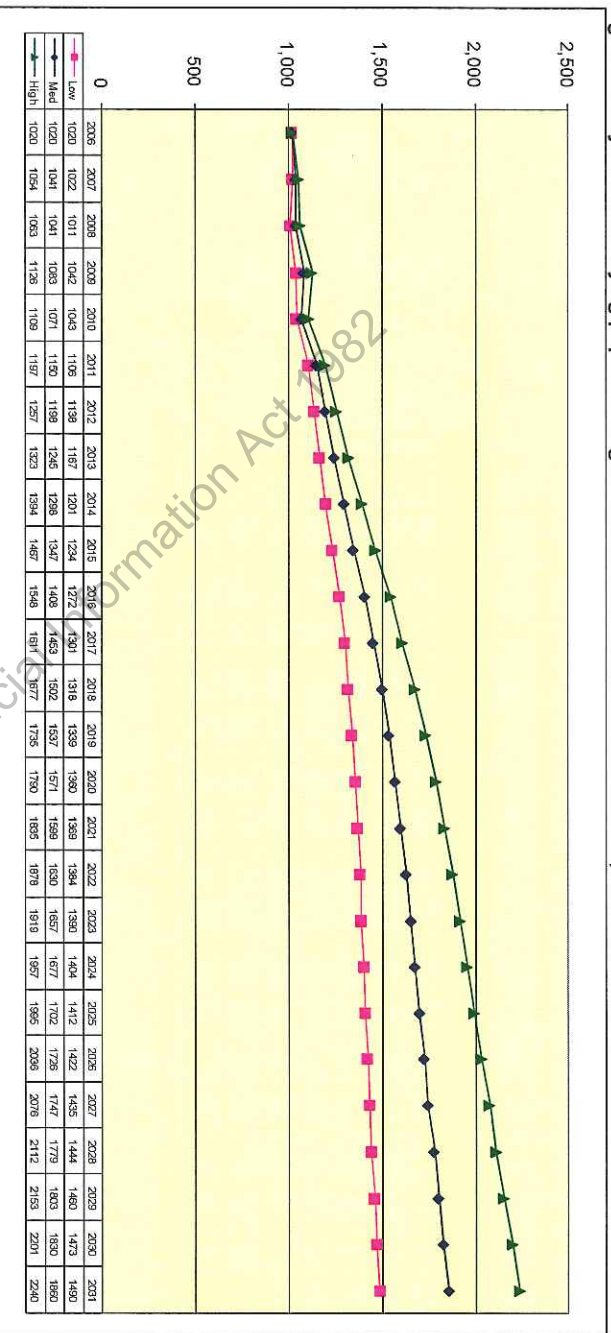
2) Underlying population projection

Figure 2 shows Statistics New Zealand's (SNZ) projections based on 2009 intercensal for the underlying population age 5-12 (Y1-8) residing in Silverdale School's catchment.

Using the medium projection scenario, the population is projected to increase by 421 5-12 year olds between 2011 and 2020. A further 289 5-12 year olds are projected to be residing in the catchment by 2031.

It should be noted that although growth is projected for Silverdale School's catchment, the CAU boundaries that make up this catchment extend beyond the school's enrolment scheme boundary. This means that some of the growth indicated may not actually be accessible by Silverdale School. However, in this instance, the largest known development to occur in this catchment is located within the school's zone.

Figure 2: Projected underlying population age 5-12 in Silverdale School's catchment, 2006-2031

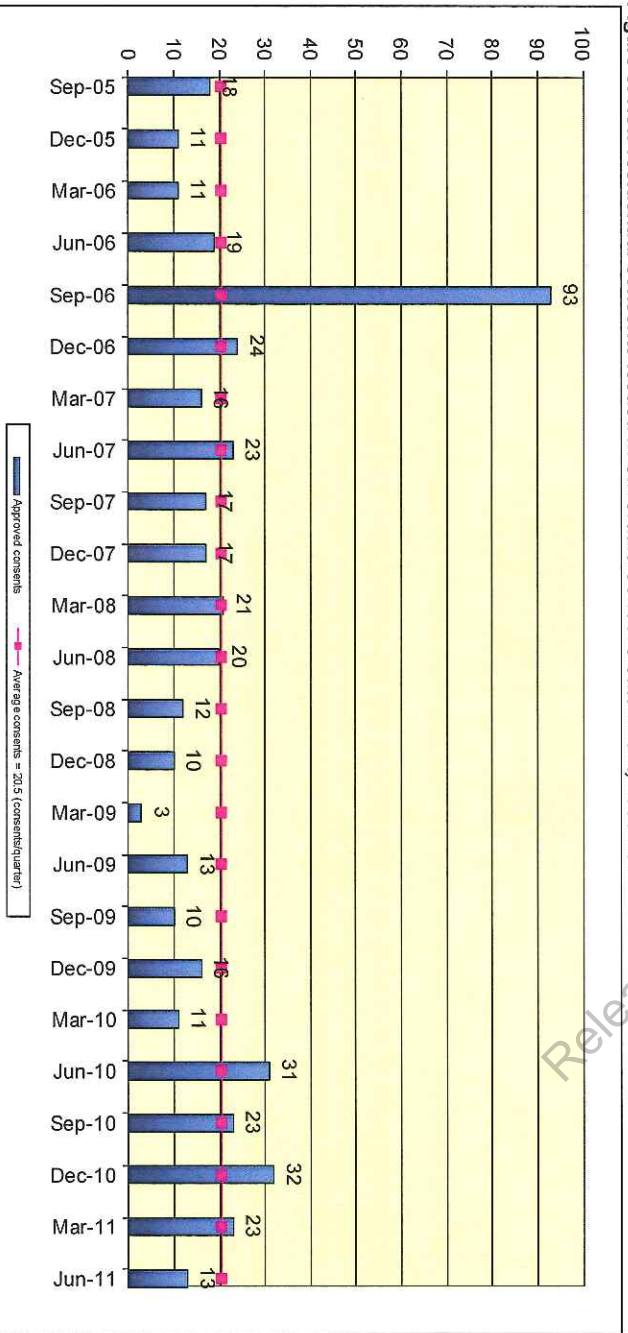


3) New Dwelling Consents

Figure 3 illustrates the number of new dwelling consents issued quarterly in Silverdale School's catchment from Sept 2005 to June 2011.

There has been a large amount of new residential development in the catchment over the past six years. This is due to the Millwater residential development which will be further explained in the section below.

Figure 3: New residential consents issued in Silverdale School's catchment, 2005-2011

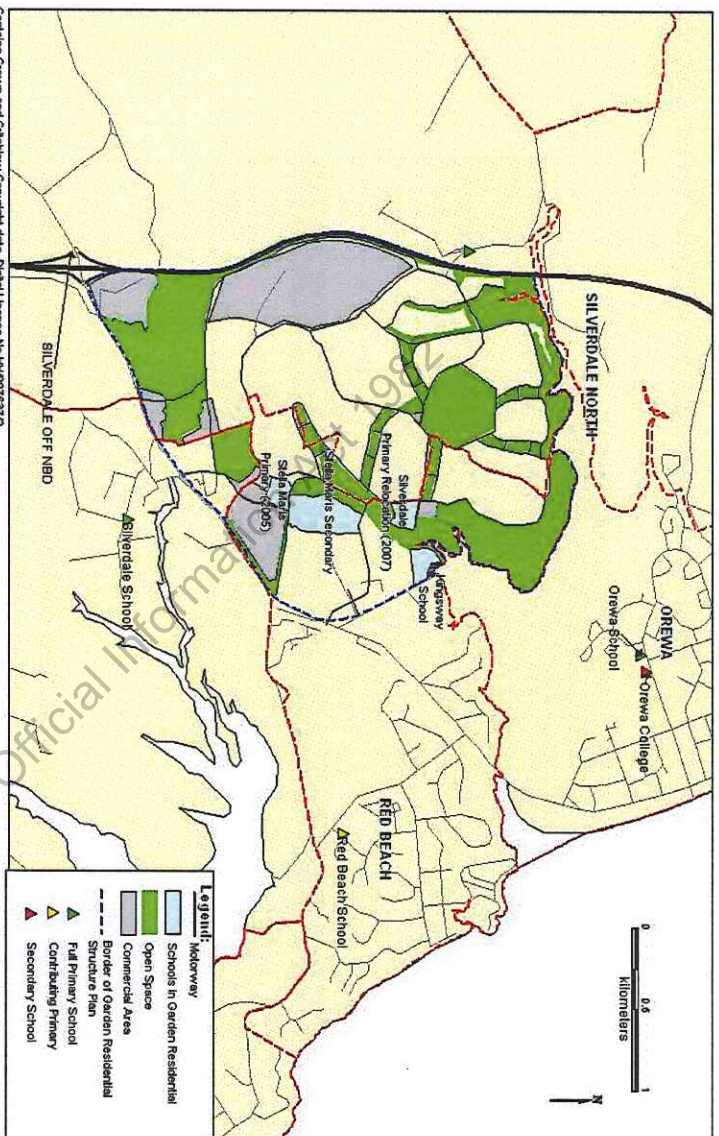


4) Local Authority Planning Considerations

(Gathered from 'Background Report to Relocate Silverdale School', 2004)

In May 2004, Rodney District Council produced an adopted structure plan for the development of Silverdale North. The focus of the structure plan was on the new development area which the Council has named **Garden Residential Development Area (GRDA)**¹. Figure 4 shows the outline of GRDA in greater detail. GRDA is one of the few remaining greenfields inside the Metropolitan Urban Limits (MUL) that was designated to accommodate Auckland's growth².

Figure 4:
Garden Residential Structure Plan



As can be seen, this area is located in the south-east of Silverdale North Area Unit (AU) and western part of Red Beach AU. According to the adopted structure plan by the council, GRDA will contain 3253 new households which will attract an estimated population of 8458 when it completes in 10 to 15 years time.

Silverdale School in Leigh Road is located approximately 2km North of its previous site and has a total land area of 5.27 which can comfortably accommodate 700 students.

The timeframe given by the council for the completion of this development is 10 to 15 years (2014 - 2019).

5) Summary of Future Roll Assessment

The roll of the school has been increasing over the past five years and is projected to continue doing so over the next two years. Ministry roll projections are considered to be understated in which the school's projections will be used in the rest of the report.

The population is projected to increase by 710 5-12 year olds over the next two years.

The development of Stillwater and Millwater will likely be completed between 2014 and 2019 and will attract an estimated population of 8,458 from 3,253 households.

¹ Millwater and Stillwater Developments

² As identified in Auckland Regional Growth Strategy (1999) and subsequently Northern and Western Sector Agreement(2001)

Network Considerations

Table 5 compare the aggregate October rolls from 2007-2011 and projected 2012-2013 rolls for Silverdale School's network of schools with the total capacity of this network.

The roll of the network has increased over the past five years and is projected to continue doing so over the next two years.

There is a surplus of 389 student spaces in the network the majority of which are at Kingsway and Orewa Schools.

Red Beach School and Silverdale School are the only two schools in the network with enrolment schemes. Both schools have out of zone students enrolled. As Red Beach School is currently operating with a deficit of student space, it needs to be advised that using its enrolment scheme wisely in the coming years will better aid the school to accommodate population growth from its in zone catchment.

Table 5: October (peak) rolls for network of schools surrounding Silverdale School, 2007-2013

| School Name | Type | TS Count | 2011 Capacity (using Peak Rolls) | 10th October Rolls | | | | | | | | | | 2011 sup/def (on total roll) |
|------------------------------|-------|-----------|----------------------------------|--------------------|-------------|-------------|-------------|-------------|-------------|-------------|----------------|------------|--|------------------------------|
| | | | | 2007 | 2008 | 2009 | 2010 | 2011 | 2012. proj | 2013 proj | March 2011 OoZ | | | |
| KingsWay School ^a | Y1-13 | 26 | 742 | 626 | 643 | 620 | 590 | 607 | 625 | 644 | 0 | 135 | | |
| Orewa School | Y1-6 | 18 | 423 | 222 | 229 | 204 | 227 | 241 | 256 | 270 | 0 | 182 | | |
| Red Beach School | Y1-6 | 29 | 674 | 659 | 619 | 646 | 696 | 678 | 702 | 730 | 45 | -4 | | |
| Silverdale School | Y1-8 | 14 | 339 | 174 | 202 | 231 | 273 | 310 | 360 | 420 | 38 | 29 | | |
| Stella Maris Primary School | Y1-8 | 10 | 400 | 300 | 337 | 334 | 343 | 353 | 390 | 400 | 0 | 47 | | |
| Total | | 97 | 2578 | 1981 | 2030 | 2035 | 2129 | 2189 | 2333 | 2464 | 83 | 389 | | |

Schools *in italics* have enrolment schemes.

^a Year 1-8 only has been included

2) Summary of the Network

The network has increased over the past five years and will likely continue doing so over the next two years.

The majority of surplus space in the network is held at Orewa and Kingsway Schools.

Red Beach School and Silverdale School need to use their enrolment schemes wisely in preparation for future roll growth.

Released under the Official Information Act

Conclusion

The relocation of Silverdale School was a strategic move to better cater for projected growth within the Silverdale area and to make to best use of the existing network without having to provide a new school.

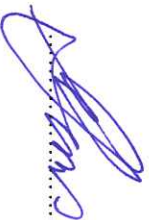
With a projected peak roll of 500 for 2014, the school will be entitled to a further eight classrooms as agreed upon during the relocation project. If out of zone students are excluded, the school is only entitled to six classrooms assuming no new out of zone students will be enrolled between now and 2014.

As the growth within the Silverdale area is happening at a steady rate that has contributed to the overall and continual roll growth of Silverdale School, there appears to be little risk in providing the school with its last instalment of eight roll growth classrooms.

In addition to this, the school needs to:

- Use its enrolment scheme wisely as the purpose of the relocation was to cater for new population growth in the Silverdale area, not for existing population in the wider Silverdale area AND;
- As per the Hibiscus Coast Area Strategy, enter into discussions with the Ministry to organise the decapitation from a full to contributing primary school as there is now adequate provision in the wider network of schools to cater for intermediate schooling.

Network Analyst
Alyssa Jones



Date:

1/2/12

Senior Advisor, Education, Curriculum and Performance



Date:

9/2/12

Property Advisor
Danica McPhee



Date:

25/2/12

Lead Network Advisor
John Karl



Date:

9/2/12

Regional Property Manager
Brian Mitchell / *Sarah Dr (Acting)*



Date:

9/02/12

Copies To:

Released under the Official Information Act 1982