
Appendix One

China Rail Zhongji Group – Gisborne District Council
Heads of Agreement



CHINA RAILWAY ZHONGJI HOLDING GROUP

Company Profile



中铁中冀控股集团
CHINA RAILWAY ZHONGJI HOLDING GROUP

Confidential

AGENDA

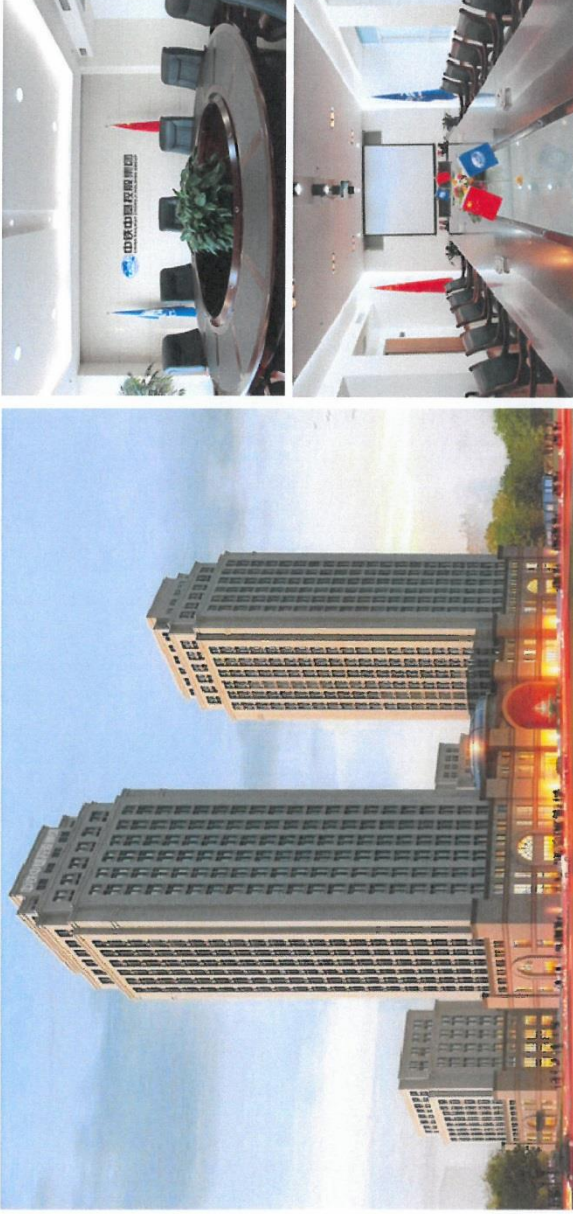
1. Purpose of meeting
2. Introductions
3. CRZJ presentation
4. Roundtable discussion
5. Next steps

ABOUT US

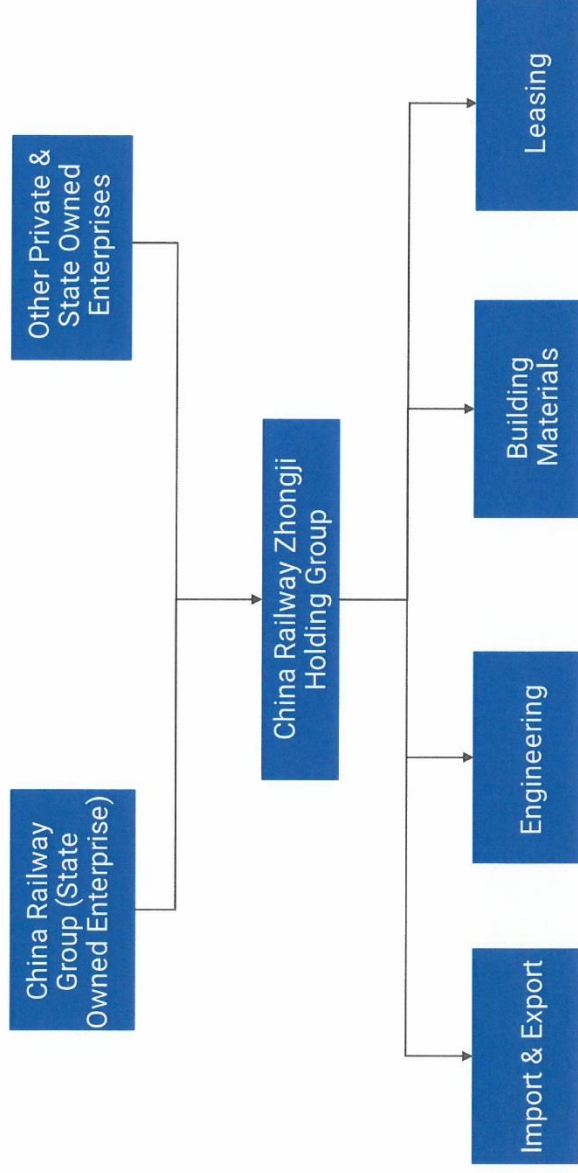
- China Railway Zhongji Holding Group (CRZJ), headquartered in Tianjin, is a Chinese State Owned Enterprise.
- With eight engineering bureaus and six business enterprises affiliated to CRZJ, our core business spans project investment, real estate development, building construction, logistics and financial services.
- CRZJ's has RMB 3 billion in net assets.
- Annual Revenue over RMB 30 billion.
- Our guiding philosophy is "Social Commitment, and Pursuit of Perfection"



HEAD OFFICE – TIANJIN, CHINA



GROUP STRUCTURE



WORLD CLASS CONSTRUCTION & ENGINEERING CAPABILITIES

Multi-industry Construction Projects

- ✓ Buildings
- ✓ Road and highways
- ✓ Bridges construction
- ✓ Irrigation works
- ✓ Sporting facilities
- ✓ Railways
- ✓ Ports
- ✓ Municipal & public utilities

Construction Services

- ✓ Building architectural engineering
- ✓ Steel structure engineering
- ✓ Mechanical & electrical installation engineering
- ✓ Fit-out & decoration engineering
- ✓ Anticorrosion & thermal insulation engineering
- ✓ Building waterproofing
- ✓ Piping engineering
- ✓ Supply of construction building materials
- ✓ Construction equipment leasing



EXAMPLE PROJECTS

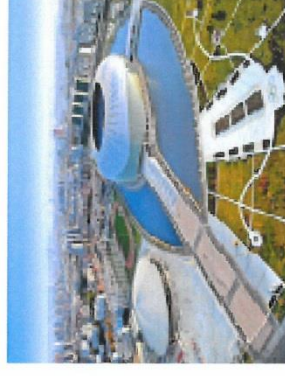
Case Study: Highway Project

- Place: Wuhai city of the Inner Mongolia Autonomous Region
- Overview: Two-way expressway with 6 traffic lanes; length of 86 kilometres and width of 27 metres
- Investment: CNY 1,510,000,000
- Timeframe: 730 days



Case Study: Sports Centre

- Place: Nankai District, Tianjin City
- Overview: Tianjin Olympic Sports Centre Stadium. Coverage area 445,000 square metres, building area of 169,000 square metres, height of the core architecture of 53 metres
- Awards: The grand prize for the architect's creation granted by the Architectural Society of China



INTERNATIONAL EXPANSION

- CRZJ embarking on international expansion
- New Zealand has been chosen as the first country for international expansion:
 - Long standing Free Trade Agreement with China
 - Ease of doing business
 - Significant infrastructure requirements coupled with capital constraints
 - New Zealand GM's personal connection with NZ
- China Railway Zhongji Holding Group (NZ) progress to date
 - Established in 2016
 - New Zealand GM appointed
 - Strategic MOU signed with Northland Regional Council, CBRE and ICBC
 - Partnership with a NZ construction company establishing a building material manufactory employs over 100 staff in Auckland.
 - CRZJ Chinaman scheduled to visit NZ in March 2017

BENEFITS OF WORKING WITH US

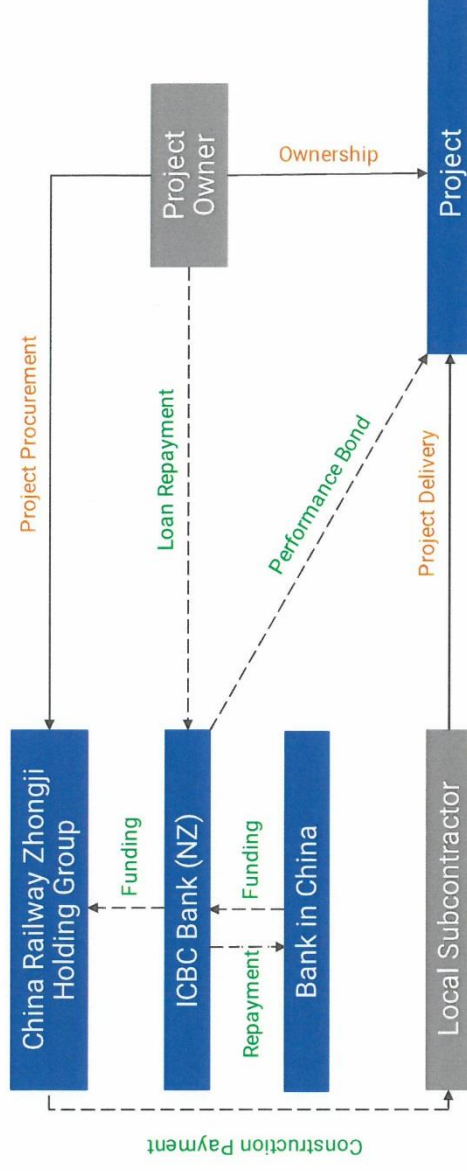
We seek a long-term cooperation with GDC, GHL and EGL.

CRZJ is able to provide:

1. Strong design, construction & engineering capability
2. A unique partnership model
3. Competitive project finance for local governments & councils
4. Access to high quality building materials and equipment

- ✓ Accelerated infrastructure development
- ✓ Promote economic development
- ✓ Job creation

PARTNERSHIP MODEL



POTENTIAL GISBORNE PROJECTS

- Port expansion
- Solar energy plant
- Waste water processing plant
- Swimming pool stadium

NEXT STEPS & TIME LINES

	Tasks	Completion
1	Identification & confirmation of suitable projects in Gisborne	15 th Feb 2017
2	Project detail questionnaire is prepared by CRZJ	15 th Mar 2017
3	Project detail questionnaire is completed by project owner	15 th Apr 2017
4	Feasibility study is carried out by CRZJ China team in NZ together with local consultants	15 th May 2017
5	CRZJ provide proposal	15 th Jun 2017
6	Proposal reviewed and agreed by project owner	15 th Jul 2017