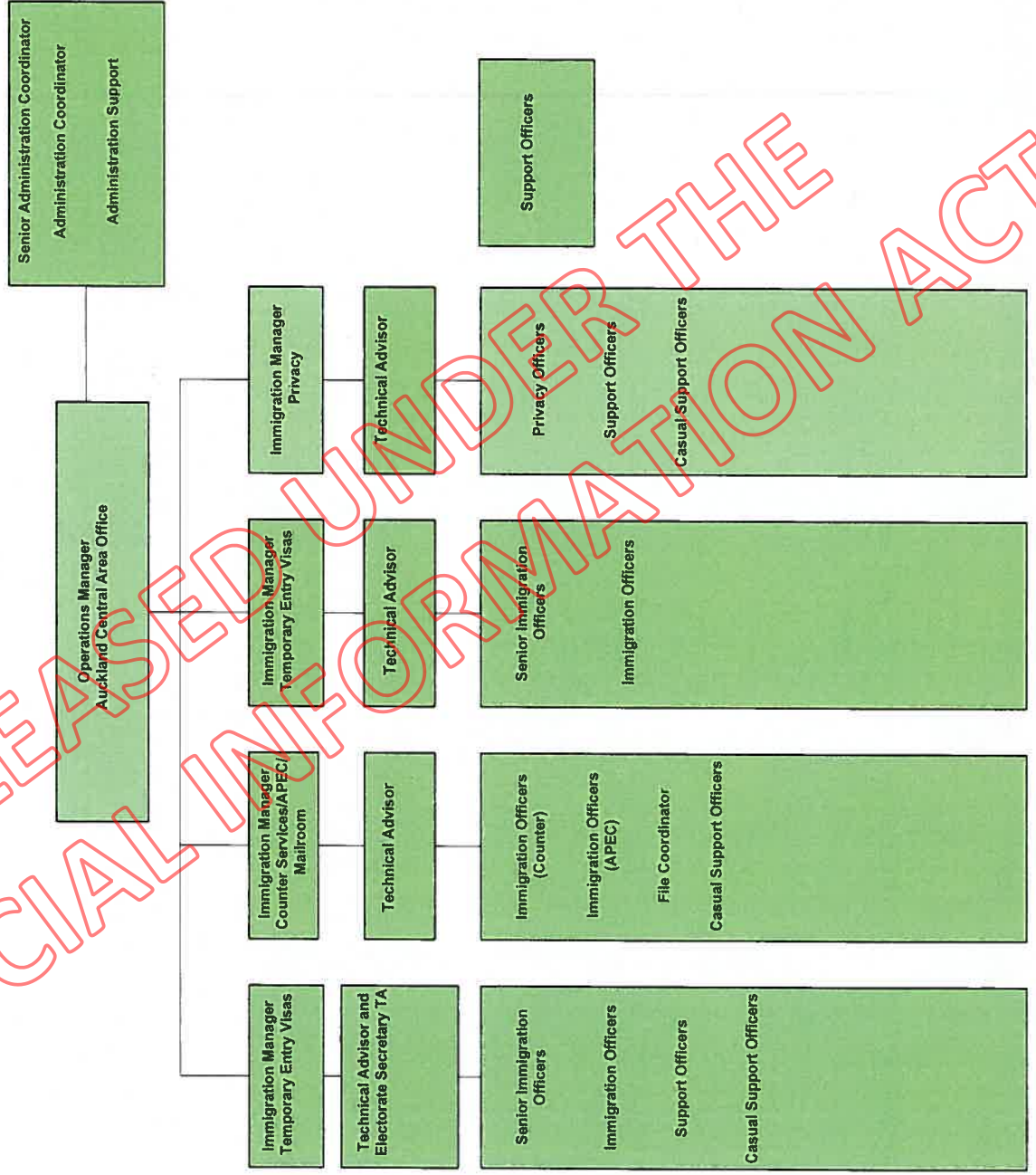


DOIA 1718-1037 - Attachment One: Insolvency Organisational Flow Chart, Auckland. As at 19 March 2018.

AUCKLAND



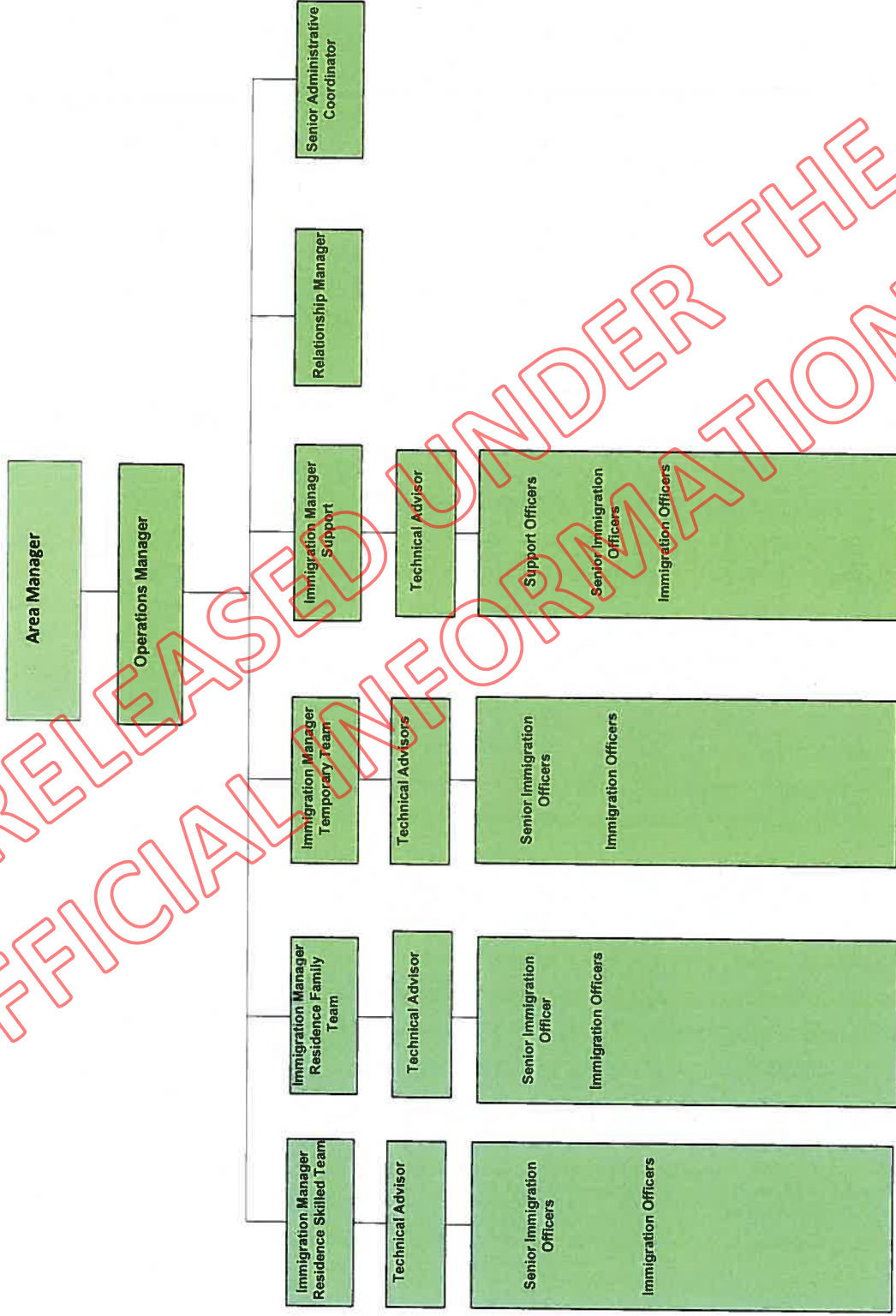
RELEASED UNDER THE OFFICIAL INFORMATION ACT



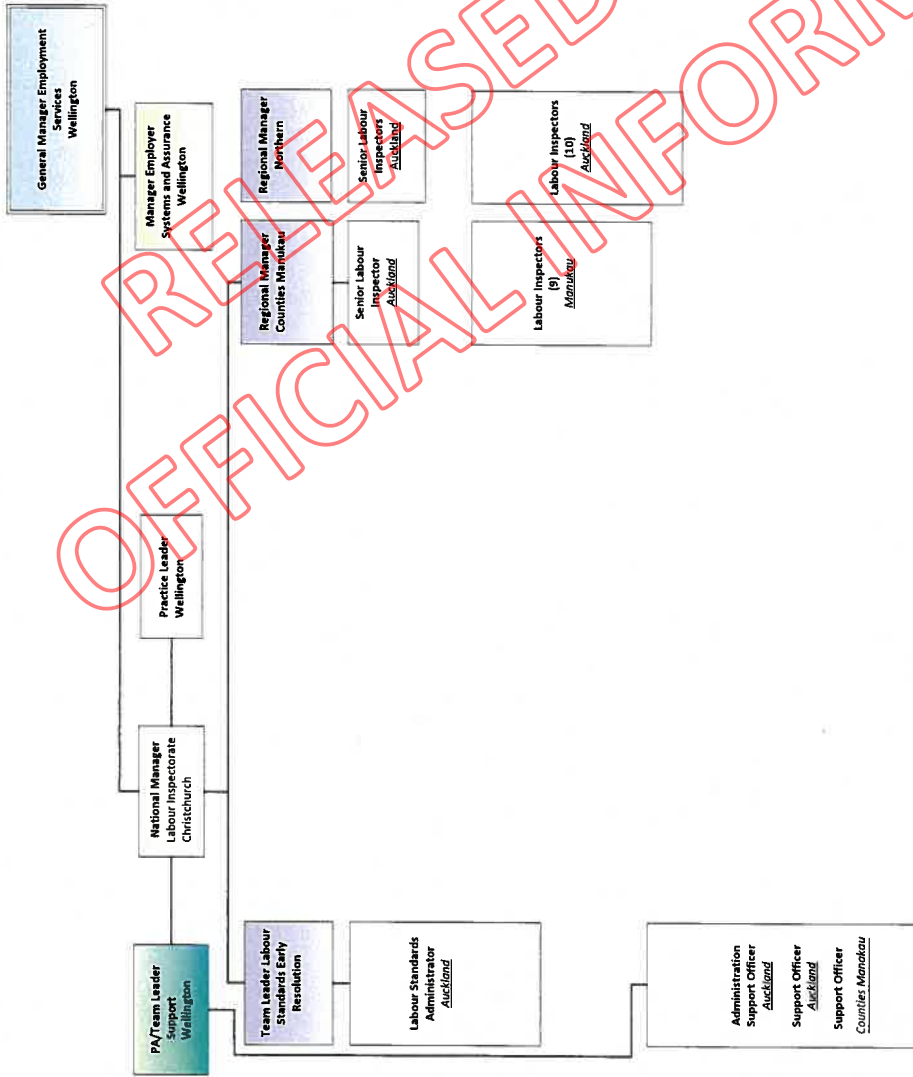
RELEASED UNDER THE OFFICIAL INFORMATION ACT



RELEASED UNDER THE OFFICIAL INFORMATION ACT

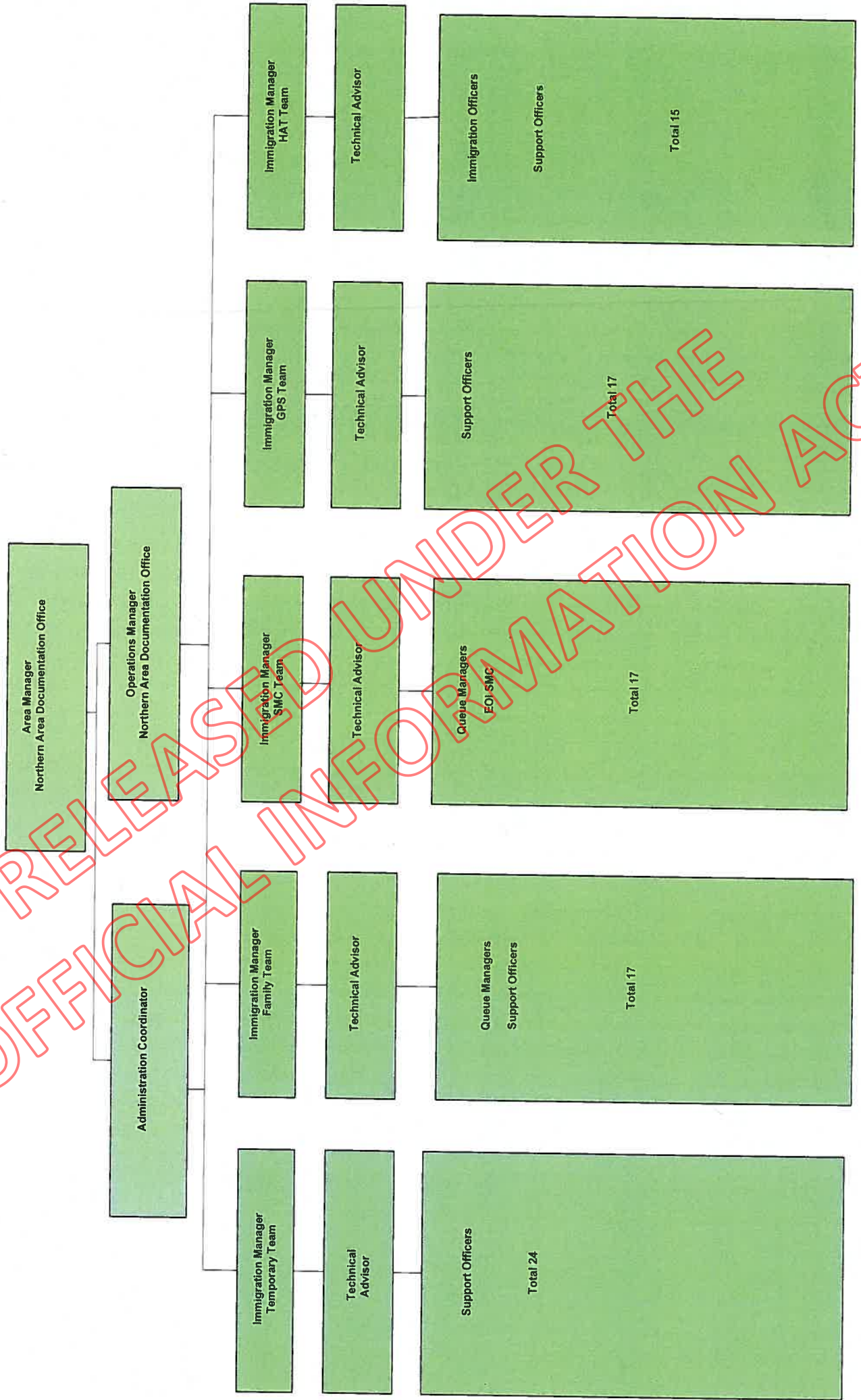


RELEASED UNDER THE OFFICIAL INFORMATION ACT



DOIA 1718-1037 - Attachment Five: Labour Inspectorate Auckland, Organisational Flow Chart. As at 19 March 2018.

RELEASED UNDER THE OFFICIAL INFORMATION ACT



RELEASED UNDER THE OFFICIAL INFORMATION ACT