

Agatiro - Upper

7-12-16
No rain for ages
In river 6am

Keeps of sign right from
junction up to

E 1696417

N 5654620

Big roost where forest sign was
& smelt heap I couldn't get
in far enough to see about
10 way temporary.

1696189

N 5654246

} feathers -
poor
moulting?

E 1696036

N 5654110

} Roost - feathers

111

prey (seen) (seen)

lot more poo leading up
to

616[?] 5693 } roost - heaps of
115653431 } poo - some little?
maybe family -

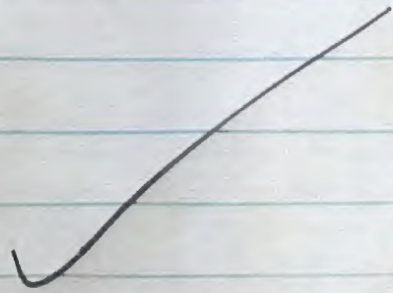
little ones up here -
collected some poo - ? ? ? ? ?

Walked back down river 3pm
E 1695664 } duck flr
N 565340 } downstream

back at roost - boy
called flying down

54
73

127

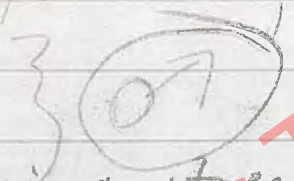


22-12-16 Ngakoro tp.

6-12 am - misty / drizzle dark

E 1696468

N 5655215



tree root crossing stream

About 20m from stream up bank

on tk. Male called & hoisted to stream watched him quite a big drink. Too dark to see if in mountain, little stream

thing up stream to about ten flew downstream.

Nga Upe h we 6-26 am

Bits of sign - fresh, maybe some little, don't think family

flour

E 1696569

by logjam 350m

N 5654749

~~37075~~ up

♂ - just before sunning ridge -
normal spot.

Had a conversation - a fine
chilled

Big D
- old maybe family pass @
start

No sign
E 1694661 } really
N 5655499 } fresh
~~pass sign~~ family?

Back in line
E 1694602 } pair - just walking
N 5654591 } singing on
don't look really

5.1.17



Nga Upper

In river 6/4 am

50m up - sign - lake yesterday?

100m up - sign fresh

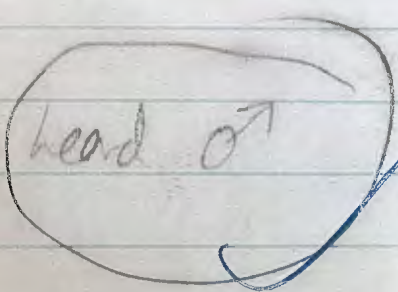
500m up - feathers old

(169630)

N 565414 - greenish pen

750m up - took sample

roost -



~~169604~~
N 565419

in moult 1.2 km up

Nothing in sp today

casually walked over
bush.

800m up - feathers + old poos

1.2 km - feathers + old poos
logans

1.3 km - bays - heap of
really fresh sign - lots a lot
of feathers - different
patches of feathers + poos around
the logans

6.1.17 L. Mal lower

No rain for 3 days

In eve - 5-50 am

- Nothing below junction - ~~put~~ point

- At junction - old po

- 50m up - little bit ~~have~~ po

E 1700177 } greenish po

N 5654095 } sample taken

150 m up from junction.

Nothing

E 1699573 - yesterday po 2 / rather

N 5654097 (750m up)

No other sign - out @ hut - 1.5km
up

Summary

- Possible pair @ junction maybe up 0.5km

- Single in moor. (unseen)

10.1.17 - Mak lowe.

In river 6-08am

last seen 24hrs ago - medium
in @ junction

Saw ~~the~~ pair just up from junction -
flew over

E 1700205 } 150m } 2 hrs ago
N 5654100 } up. } 1st sign

Released Under The
Official Information Act



300m up = heap of feathers + poo

E 1700059 } roost (duck)
N 5653904 } 350m up

heap of sign - feathers & poo
del ~~the~~ enough for ?

E 1700002 } 550m roost
N 5653774 } up fresh sign

new territory

1.2 km up } - new signs - fresh
feeder

€ 1699719
NS653250

pair (new) € 1697446 - 2 spots
NS652759 - 2 spots

€ 1699272 } 1.8 km up
NS652769 } sign - older

€ 1699018 - 2 km up
NS652754 (dark wood)

pair sign? - 2.5 km up

followed birds of same range up to
hinter mountains getting better
(single)

Released Under The
Official Information Act